

SOME RISE UP TO REACH FOR THE SKY.
SOME, MAKE A HOME THERE.



PRESENTING

C ● D E N A M E

rise up

1 & 2 BHK Premium Residences, Near 4 Bungalows, Andheri West



C ● D E N A M E

rise up

AN ULTRA-PREMIUM
LIFESTYLE
for you to rise above all.

There are people who dream and then there are those who rise up to fulfill their ambitions. The homes at Codename: Rise Up are made for the latter with a multitude of ultramodern amenities laid out on a premium platter.

Thoughtfully located near 4 Bungalows, Andheri West, the location is abuzz with some of the most elite gentry and easy connectivity to main junctions such as Lokhandwala, Char Bungalow, Infinity Mall, Yash Raj Films Studio, Versova Beach, Kokilaben Ambani Hospital., is quite seamless. Beyond the seamless lifestyle one would be privy to the impressive stunning view of the mangrove area greens and cityscape. The 1 & 2 BHK ultra-premium residences will simply leave you awestruck. It's time to make the next move and rise up in life to the destination that has it all.



WHERE THE
ULTRAMODERN
AMENITIES
rise to uplift
your experiences!



Landscaped Terrace



Grand Entrance Lobby



Convenience Shopping at Doorstep



Fitness Centre



Video Intercom Facility



CCTV Camera System



Ample Car Parking



KEY DISTANCES:

CONNECTIVITY

Western Express Highway	7.0 km
SV Road	4.0 km
Versova	2.9 km
Andheri Railway Station	4.0 km
Versova Metro Station	1.6 km

SHOPS & OFFICES

Nirlon Knowledge Park	6.2 km
NESCO IT Park	5.9 km

HOSPITALS

Kokilaben Dhirubhai	
Ambani Hospital	1.2 km
Shraddha Vihar Hospital	2.4 km
Aashirwad Hospital	1.6 km
Siddhi Vinayak Hospital	2.1 km
Kripa Hospital	2.4 km

MALLS

Infiniti Mall	2.0 km
Citi Mall	1.8 km
Fun Republic Mall	1.8 km
Crystal Point Mall	2.1 km

SCHOOLS & COLLEGES

Stellar World School	350 m
St. Mary's High School	350 m
Jankidevi Public School	450 m
Valia College Bhavnagar	1.7 km
Gyan Kendra's Prof. Ramnath	
Pandey Degree College	1.3 km

HOTELS

Treebo Trip Golden Cliff Hotel	450 m
Svenska Design Hotel	1.7 km
The Empresa Hotel	1.8 km
Hotel Orritel West	2.1 km
Adlon International Hotel	1.9 km



Artistic Impression

LEGEND- Terrace Floor:

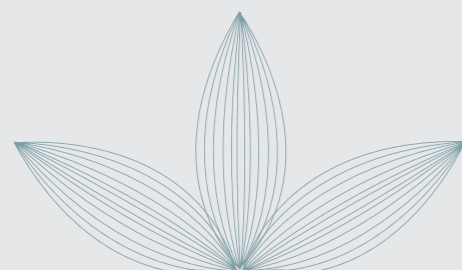
- | | | | |
|------------------------------|--------------------------|---------------------------|---------------------|
| 1) Entrance Plaza | 5) Flower Bays | 9) Yoga / Meditation Deck | 13) Hibiscus Garden |
| 2) Party Lawn and Party Deck | 6) Outdoor Workout Space | 10) Pergola with Seating | 14) Gazebo |
| 3) Urban Seating | 7) Kids Play Area | 11) Feature Wall | 15) Seating Cove |
| 4) Walking Track | 8) Festival Court | 12) Rose Garden | |

Ground Floor Plan



AREA STATEMENT IN SQ.M. & SQ.FT.

SHOP NO.	TYPE	CARPET AREA	
		SQ.M	SQ.FT
1	SHOP	12.88	138.64
2	SHOP	13.88	149.40
3	SHOP	13.39	144.13
4	SHOP	13.26	142.73
5	SHOP	13.88	149.40
6	SHOP	13.25	142.62



*NOTE : "Carpet area" means the net usable floor area of an apartment, excluding the area covered by the external walls, areas under services shafts, exclusive balcony or verandah area and exclusive open terrace area, but includes the area covered by the internal partition walls of the apartment. Internal columns / shear walls embedded as a part of internal partition walls are included in carpet area.

1st Floor Plan

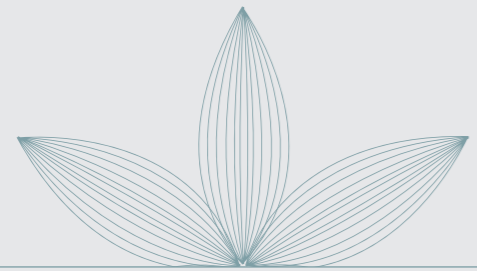


FOR INTERNAL USE ONLY

FOR INTERNAL USE ONLY

AREA STATEMENT IN SQ.M. & SQ.FT.

FLAT NO.	TYPE	CARPET AREA	
		SQ.M	SQ.FT
1	2 BHK	67.54	727



MAHARera Reg No. : P51800045731
 maharera.mahaonline.gov.in



*NOTE : "Carpet area" means the net usable floor area of an apartment, excluding the area covered by the external walls, areas under services shafts, exclusive balcony or verandah area and exclusive open terrace area, but includes the area covered by the internal partition walls of the apartment. Internal columns / shear walls embedded as a part of internal partition walls are included in carpet area.

2nd Floor Plan

FOR INTERNAL USE ONLY

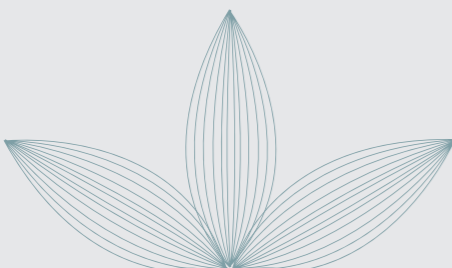


FOR INTERNAL USE ONLY

FOR INTERNAL USE ONLY

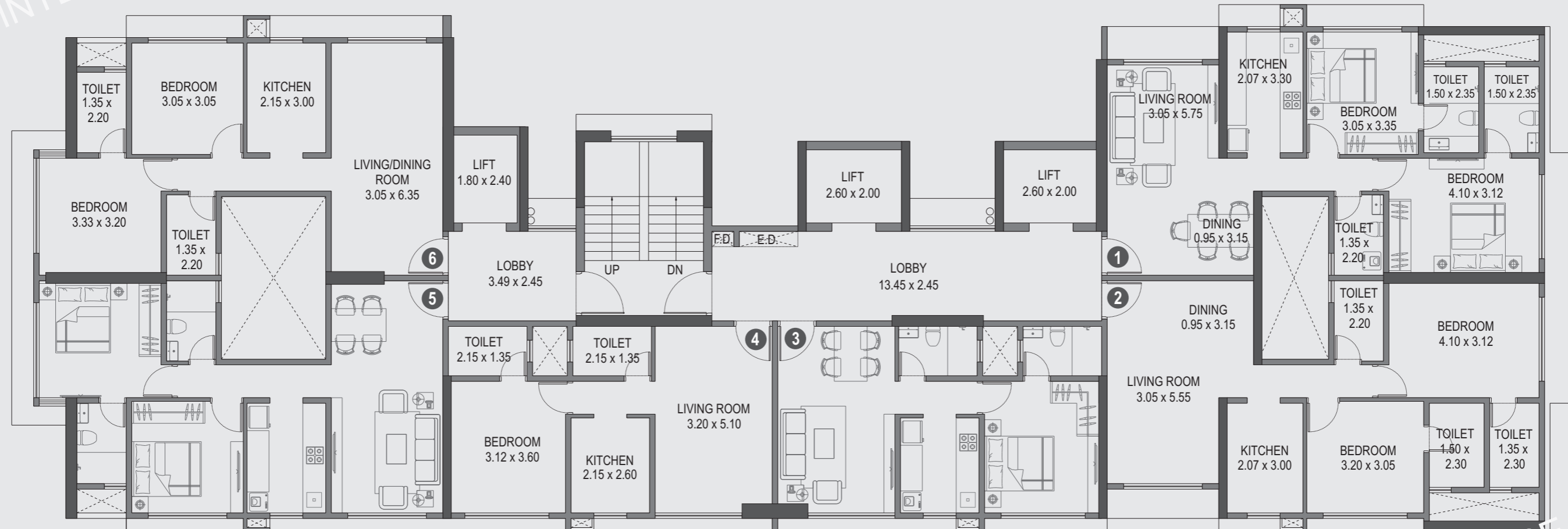
AREA STATEMENT IN SQ.M. & SQ.FT.

FLAT NO.	TYPE	CARPET AREA	
		SQ.M	SQ.FT
1	2 BHK	67.54	727.00
2	2 BHK	65.22	702.00
3	1 BHK	43.38	467.00
4	1 BHK	43.38	467.00



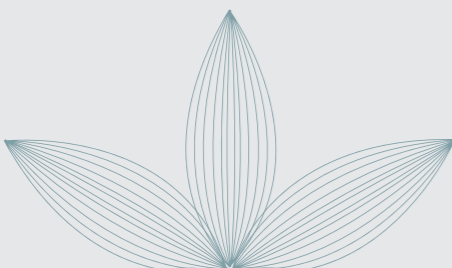
*NOTE : "Carpet area" means the net usable floor area of an apartment, excluding the area covered by the external walls, areas under services shafts, exclusive balcony or verandah area and exclusive open terrace area, but includes the area covered by the internal partition walls of the apartment. Internal columns / shear walls embedded as a part of internal partition walls are included in carpet area.

Typical 3rd to 7th, 9th to 14th Floor Plan



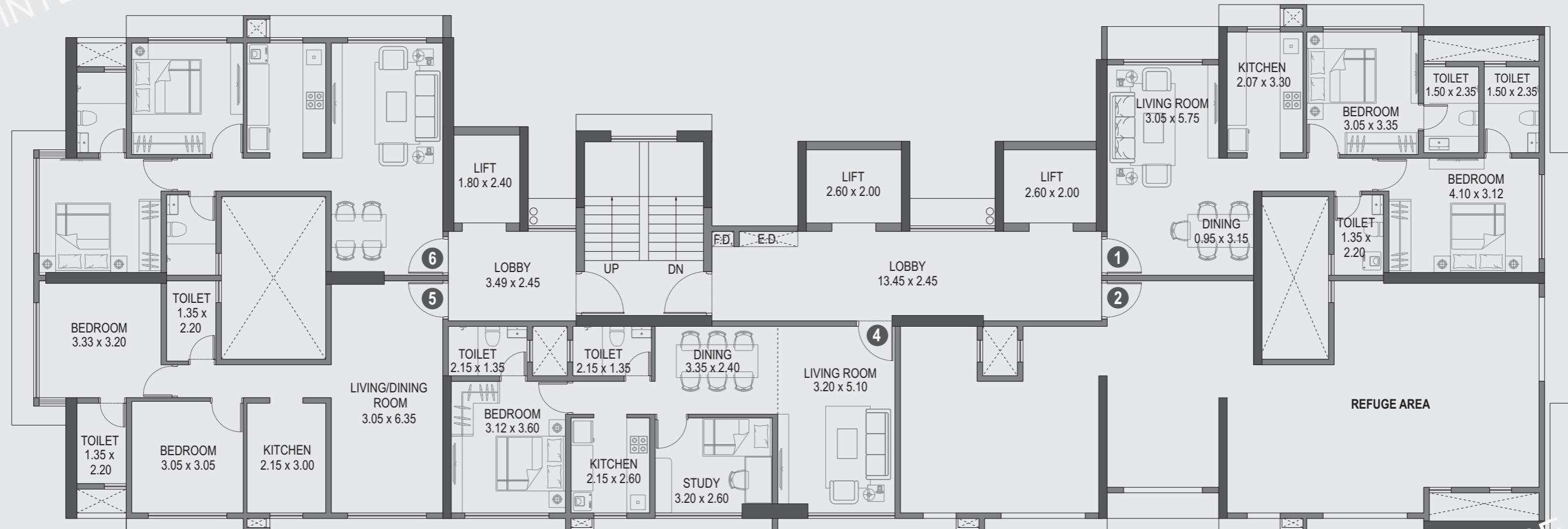
AREA STATEMENT IN SQ.M. & SQ.FT.

FLAT NO.	TYPE	CARPET AREA	
		SQ.M	SQ.FT
1	2 BHK	67.54	727.00
2	2 BHK	65.22	702.00
3	1 BHK	43.38	467.00
4	1 BHK	43.38	467.00
5	2 BHK	58.53	630.00
6	2 BHK	58.53	630.00



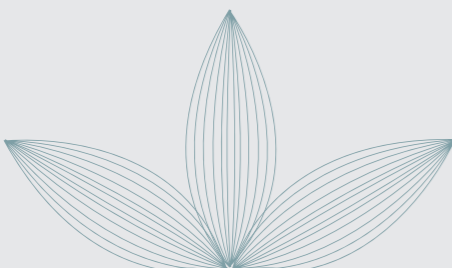
*NOTE : "Carpet area" means the net usable floor area of an apartment, excluding the area covered by the external walls, areas under services shafts, exclusive balcony or verandah area and exclusive open terrace area, but includes the area covered by the internal partition walls of the apartment. Internal columns / shear walls embedded as a part of internal partition walls are included in carpet area.

8th Refuge Floor Plan



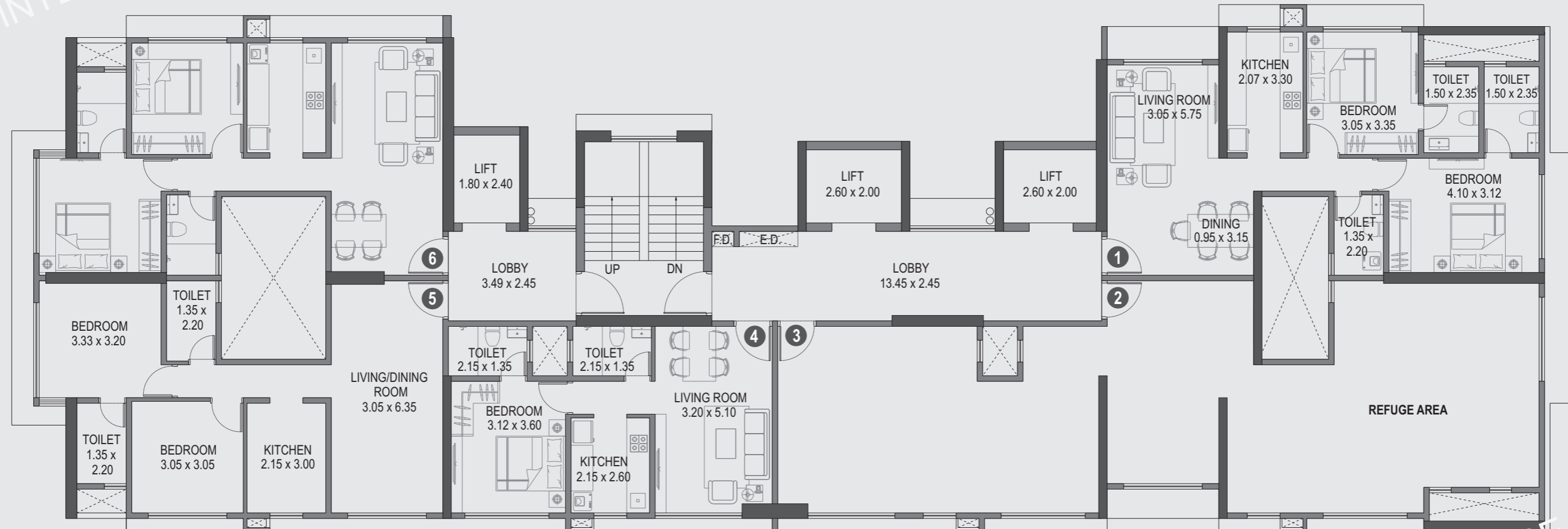
AREA STATEMENT IN SQ.M. & SQ.FT.

FLAT NO.	TYPE	CARPET AREA	
		SQ.M	SQ.FT
1	2 BHK	67.54	727.00
2	REFUGE		
4	2BHK	60.48	651.00
5	2 BHK	58.53	630.00
6	2 BHK	58.53	630.00



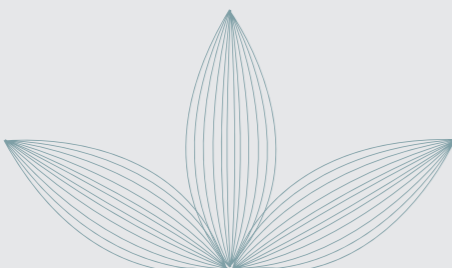
*NOTE : "Carpet area" means the net usable floor area of an apartment, excluding the area covered by the external walls, areas under services shafts, exclusive balcony or verandah area and exclusive open terrace area, but includes the area covered by the internal partition walls of the apartment. Internal columns / shear walls embedded as a part of internal partition walls are included in carpet area.

15th Refuge Floor Plan



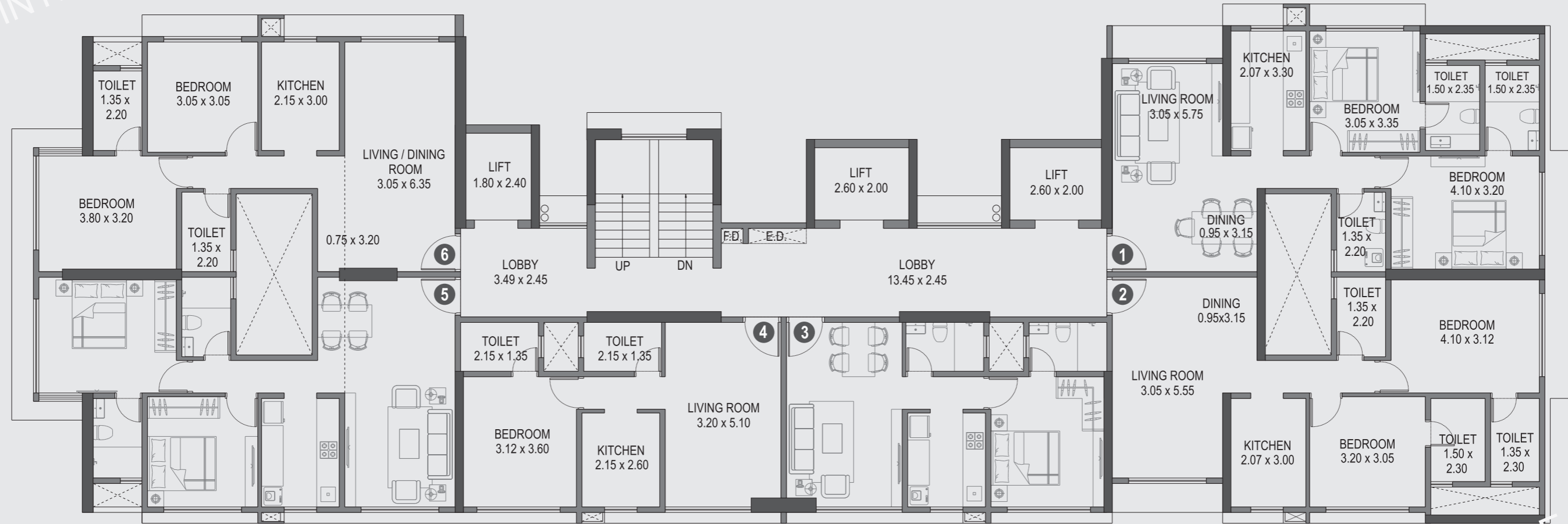
AREA STATEMENT IN SQ.M. & SQ.FT.

FLAT NO.	TYPE	CARPET AREA	
		SQ.M	SQ.FT
1	2 BHK	67.54	727.00
2, 3	REFUGE		
4	1BHK	43.38	467.00
5	2 BHK	58.53	630.00
6	2 BHK	58.53	630.00



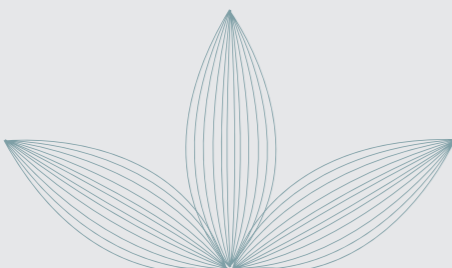
*NOTE : "Carpet area" means the net usable floor area of an apartment, excluding the area covered by the external walls, areas under services shafts, exclusive balcony or verandah area and exclusive open terrace area, but includes the area covered by the internal partition walls of the apartment. Internal columns / shear walls embedded as a part of internal partition walls are included in carpet area.

Typical 16th to 22nd Floor Plan



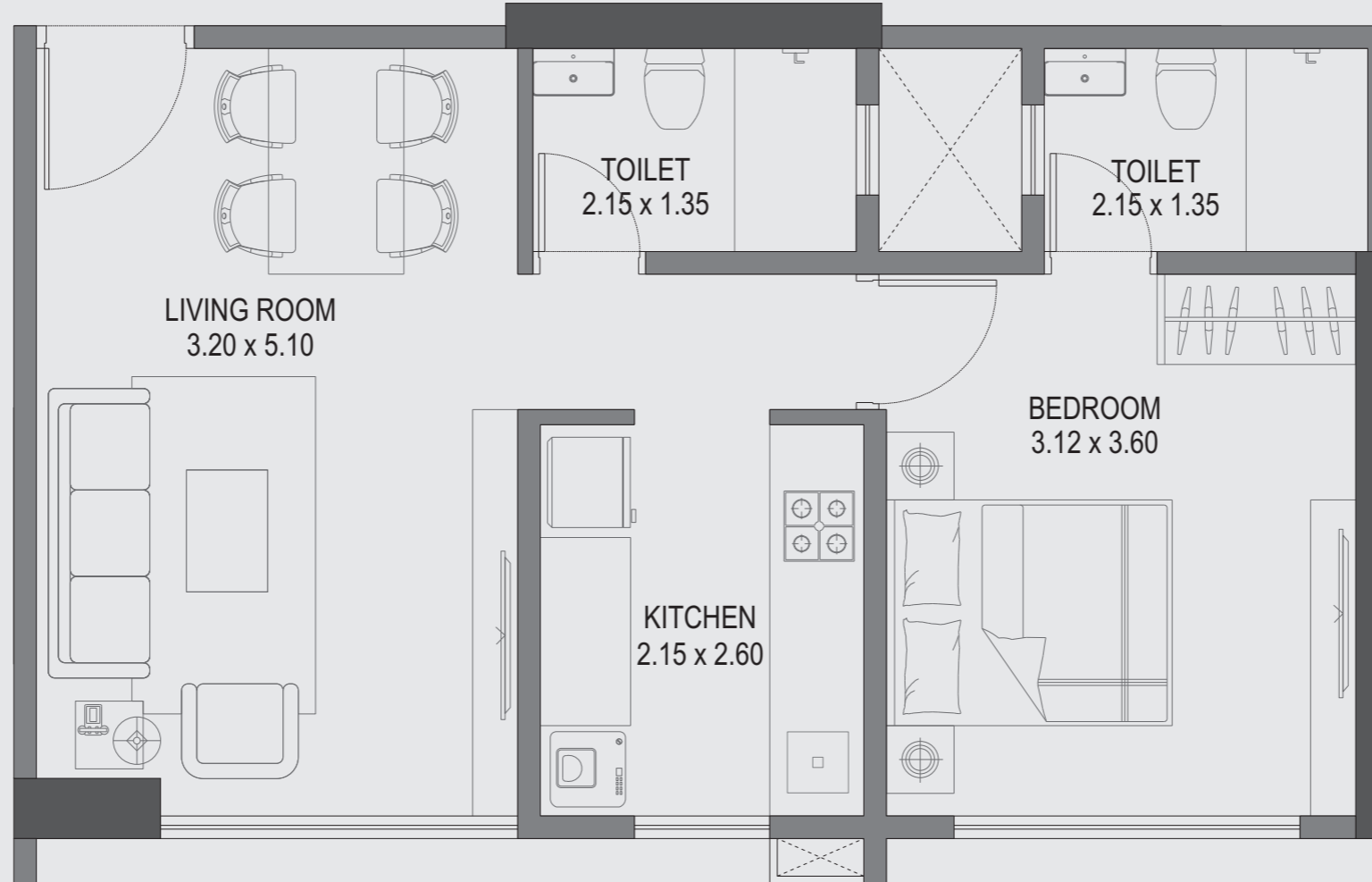
AREA STATEMENT IN SQ.M. & SQ.FT.

FLAT NO.	TYPE	CARPET AREA	
		SQ.M	SQ.FT
1	2 BHK	67.54	727.00
2	2 BHK	65.22	702.00
3	1 BHK	43.38	467.00
4	1 BHK	43.38	467.00
5	2 BHK	61.78	665.00
6	2 BHK	61.78	665.00



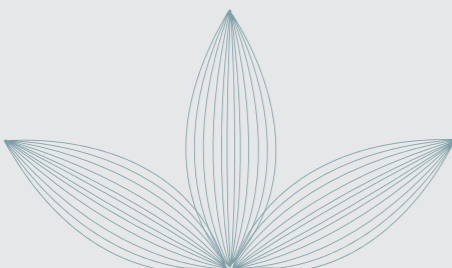
*NOTE : "Carpet area" means the net usable floor area of an apartment, excluding the area covered by the external walls, areas under services shafts, exclusive balcony or verandah area and exclusive open terrace area, but includes the area covered by the internal partition walls of the apartment. Internal columns / shear walls embedded as a part of internal partition walls are included in carpet area.

TYPICAL UNIT PLAN - 1 BHK



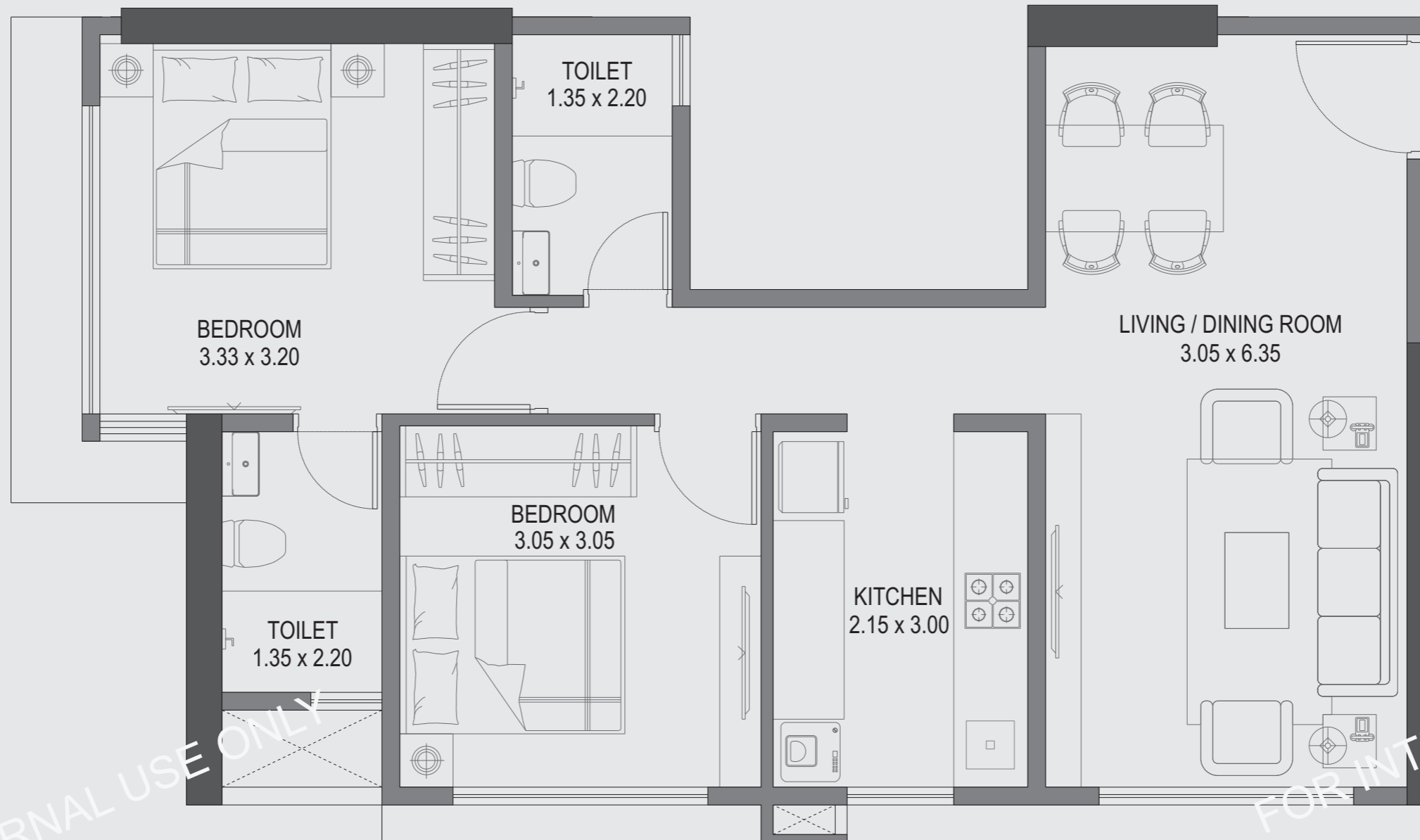
AREA STATEMENT IN SQ.M. & SQ.FT.

FLAT NO.	TYPE	CARPET AREA	
		SQ.M.	SQ.FT.
3	1 BHK	43.38	467



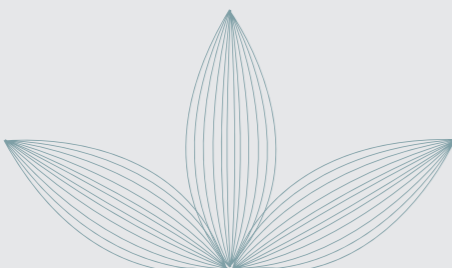
*NOTE : "Carpet area" means the net usable floor area of an apartment, excluding the area covered by the external walls, areas under services shafts, exclusive balcony or verandah area and exclusive open terrace area, but includes the area covered by the internal partition walls of the apartment. Internal columns / shear walls embedded as a part of internal partition walls are included in carpet area.

TYPICAL UNIT PLAN - 2 BHK



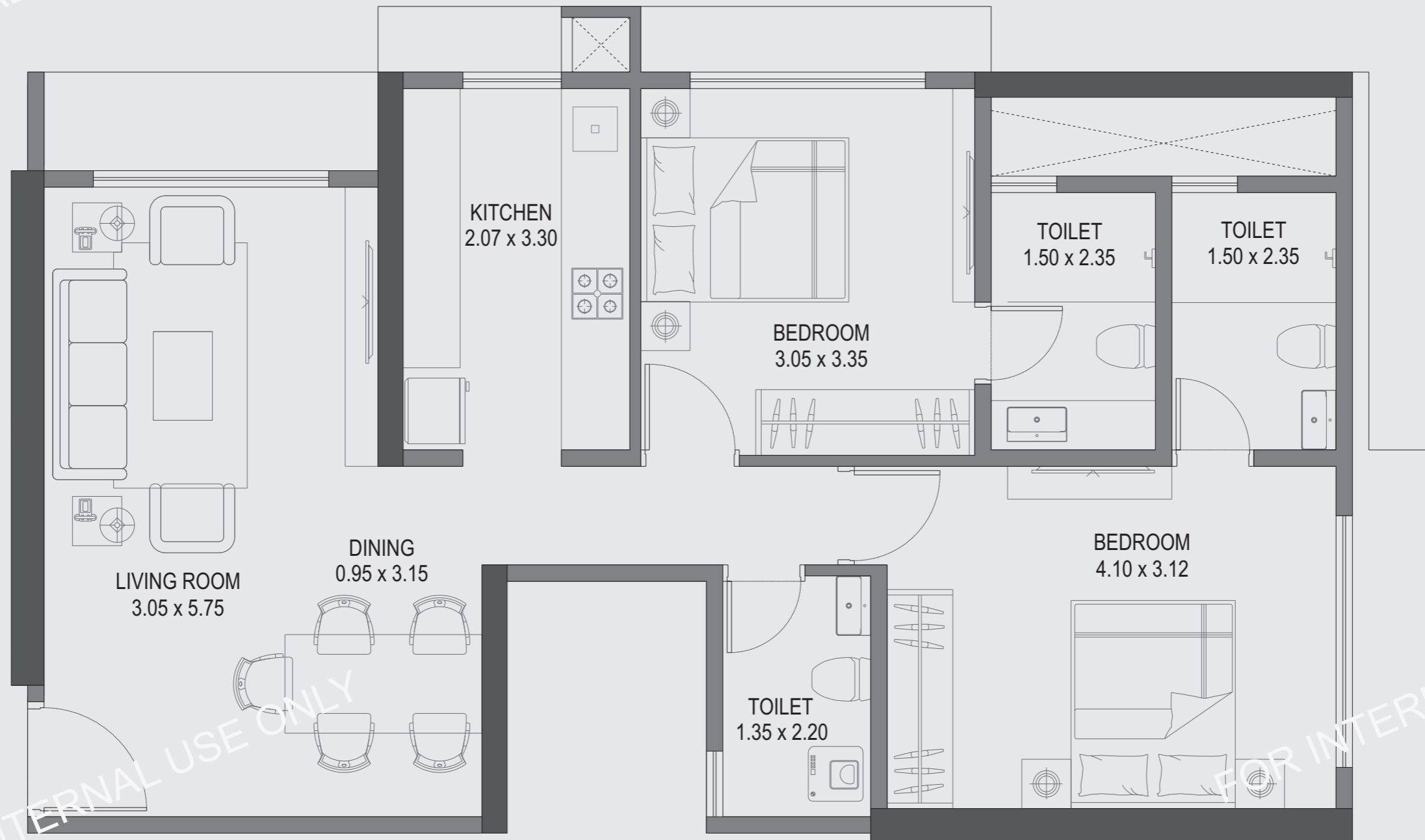
AREA STATEMENT IN SQ.M. & SQ.FT.

FLAT NO.	TYPE	CARPET AREA	
		SQ.M.	SQ.FT.
5	2 BHK	58.53	630



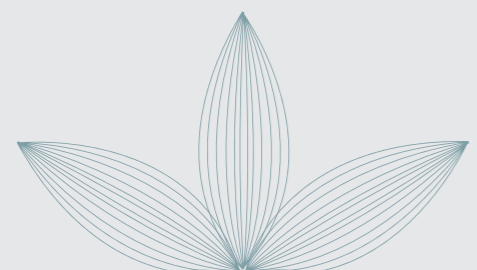
*NOTE : "Carpet area" means the net usable floor area of an apartment, excluding the area covered by the external walls, areas under services shafts, exclusive balcony or verandah area and exclusive open terrace area, but includes the area covered by the internal partition walls of the apartment. Internal columns / shear walls embedded as a part of internal partition walls are included in carpet area.

TYPICAL UNIT PLAN - 2 BHK



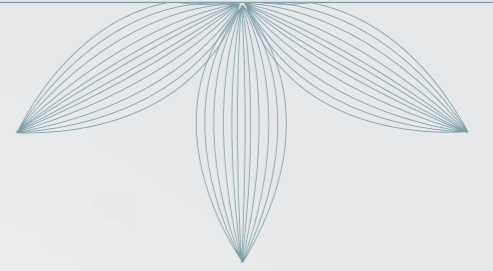
AREA STATEMENT IN SQ.M. & SQ.FT.

FLAT NO.	TYPE	CARPET AREA	
		SQ.M.	SQ.FT.
1	2 BHK	67.54	727



*NOTE : "Carpet area" means the net usable floor area of an apartment, excluding the area covered by the external walls, areas under services shafts, exclusive balcony or verandah area and exclusive open terrace area, but includes the area covered by the internal partition walls of the apartment. Internal columns / shear walls embedded as a part of internal partition walls are included in carpet area.

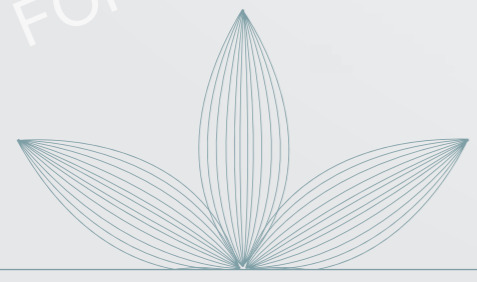
TYPICAL **1 BHK** SECTION VIEW



FOR INTERNAL USE ONLY

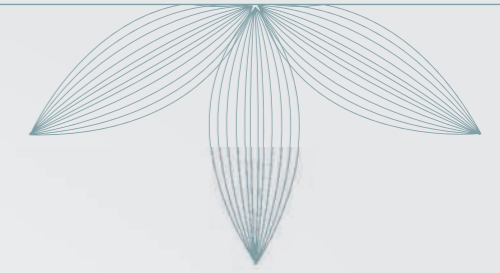
FOR INTERNAL USE ONLY

FOR INTERNAL USE ONLY



Carpet area: 43.38 sq.m (467 sq.ft)

TYPICAL **2 BHK** SECTION VIEW

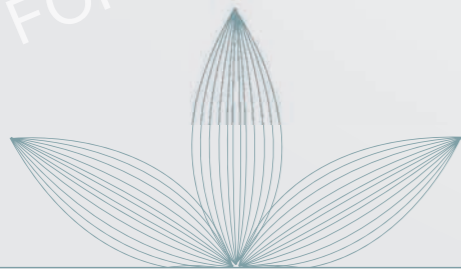


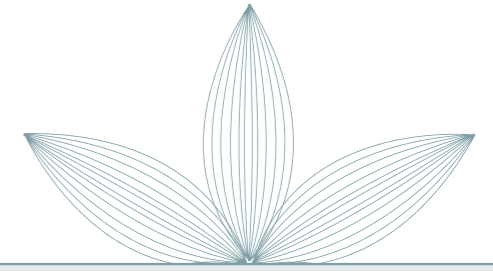
FOR INTERNAL USE ONLY

FOR INTERNAL USE ONLY

FOR INTERNAL USE ONLY

Carpet area: 67.54 sq.m (727 sq.ft.)





Specifications



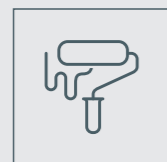
KITCHEN

- Granite kitchen platform with stainless steel sink



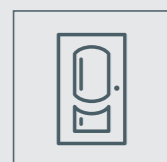
WINDOWS

- Powder coated aluminum sliding windows



PAINTING AND FINISHES

- Gypsum punning and plastic emulsion paint for all internal walls (except toilet)



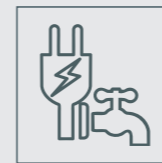
DOORS

- Main door will be flush door with veneer on both sides
- All internal door shutters will be flush doors with laminate on both sides
- All toilet doors will be flush doors with laminate finish on both sides



FLOORING AND DADO WORK

- Vitrified tiles for living, dining, kitchen and bedrooms
- Ceramic tiles in toilets
- Dado tiles up to lintel level in toilets
- Dado tiles above cooking and service platform up to lintel level in kitchen



ELECTRICAL AND PLUMBING

- Concealed wiring with modular switches
- Concealed plumbing with CP plumbing fixtures
- Electrical and plumbing provisions for water heater and electrical provision for exhaust fan in all toilets
- Electrical & plumbing provisions for water purification and electrical provision for exhaust fan in kitchen
- TV and telephone points in living room and all bedrooms
- AC electrical point in living room and all bedrooms