



Rise above the ordinary &
Bloom in *Happiness*

Your extravagant lifestyle needs a fine composition of style and serenity, that allow you to experience the luxuries of life. Presenting OM SAI SADAN. A multi storey tower, situated at Gorai 2, Borivali West, that gives you a lot of opportunities to spend quality time with your near & dear ones.



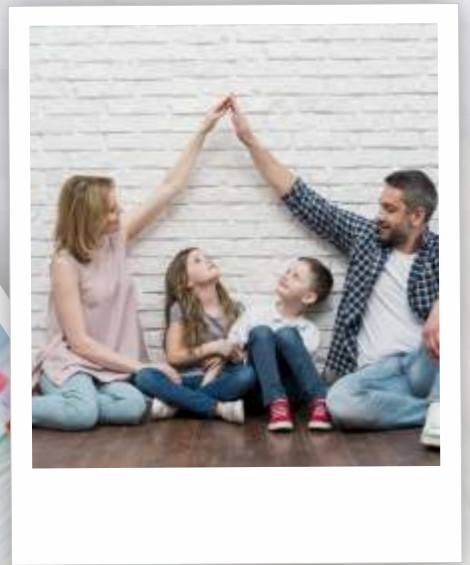
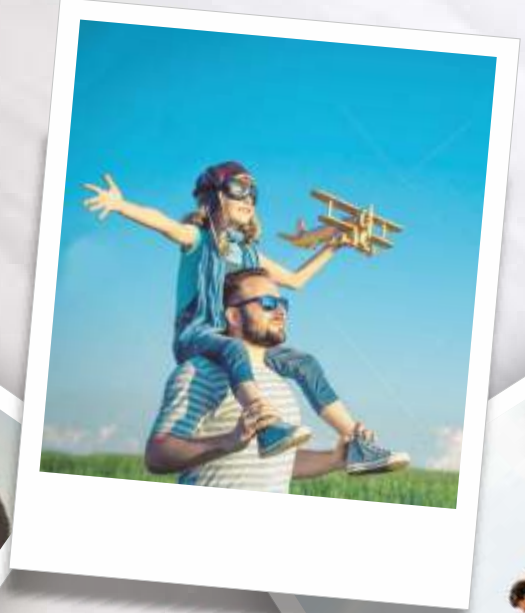
Live more...

Welcome to *Om Sai Sadan*



The ultimate possession for Elevated *Lifestyle*

OM SAI SADAN stands tall in its surroundings at Gorai 2, an ultimate statement in LUXURY. From the grand entrance to the classy apartments, everything bespeaks of an excellence that is lovingly created for YOU. The fabulous facade gives just a hint for what awaits inside. Optimum designing and planning gives the best of natural elements and view. Specially designed yoga and gym spaces allows you to rejuvenate your body and mind at your own pace. The surroundings are absolutely suited for a plush lifestyle. Having all amenities at your fingertips and the best commuting infrastructure, get ready to create your forever happy moments at OM SAI SADAN tower.



Recharge your mind and body here.



Finer Finishes

A home is a soothing retreat, where you look forward to go back again after a day's

hardship. It is an oasis of joy where your desires flourish and dreams are fulfilled.

Embrace a peaceful and tranquil way of life at "OM SAI SADAN". An iconic 22 storey

tower at Gorai 2, Borivali west. With luxury amenities, it offers an elevated lifestyle.



Elegantly designed entrance lobby & corridors ■ Sitting arrangements in lobby for visitors ■ Landscaped terrace garden

Separate society office / Security cabin with intercom ■ Separate common toilets for servants / drivers ■ Fire fighting

systems / equipments ■ Hi-tech 24X7 security system with adequate CCTV / cameras ■ Elegantly designed corridors

Hi-speed lifts of branded company ■ Wide stairways ■ Adequate parking with well lit parking bays

It's time for your own luxury *Space*

Be on top of the world. Let all your wishes come true. Have a cozy evening with your loved ones under the starry night with the entire city spread at your feet. Relax, rejuvenate and energise at the terrace garden as it not only offers a green landscaped space, but an entire wellness solution. A yoga room, children's play area, gymnasium and sit-outs, offer you a wide choice for fitness and health. All this with a refreshing breeze and a view of the sea, Pagoda, and vast horizon.



There is really lot more to a home than just being a spaciouly styled apartment with a superior finishes. You look forward to a retreat kind of a home which 'will let' you have the ME TIME. You want a green environment for peace of mind, body and soul, where your children can play safely, elders can enjoy their evening gossip without anyone disturbing them. Where you can rejuvenate on a jogging track, gym, meditation zone or chit-chat corner and take a morning oxi-rich experience.



Terrace

Floor Plan



LET YOUR FAMILY ENJOY
ME MOMENTS
AT THEIR OWN LEISURE TIME

- CHILDREN'S PLAY AREA
- COVERED CABANAS FOR ELDERLY PEOPLE
- CHIT-CHAT CORNERS
- WELL PAVED JOGGING TRACK
- WELL EQUIPPED GYMNASIUM
- COVERED SITTING AREAS
- MEDITATION CORNER
- YOGA ROOM / GYM CENTRE

Welcome the *Superior* amenities

FLOORING : Elegant mirror polished high quality vitrified tiles along with skirting in the entire flat.

WINDOW : Anodized powder coated aluminium sliding French window with Granite sill.

DOOR : Decorative laminated main flush door with high quality brass fitting. Marine waterproof ply board door for washrooms

PAINTING : P.O.P. finished with good quality distemper paint in entire flat.
Decorative P.O.P. moulded ceiling in the living room.
The exterior of the building will be painted with good quality acrylic branded paint.

KITCHEN : Granite kitchen platform with stainless steel sink, branded fittings and Designer tiles upto beam level above platform. Modular Kitchen. Adequate electrical points. Provision for exhaust fan and piped connection. Plumbing for Water purifier and washing machine.



ELECTRICAL : Polycab flexible copper wiring concealed in PVC conduits in entire flat with adequate points with high quality branded modular switches. The distribution & main board with circuit breakers shutter.
Telephone and T.V. points in the living room and bedrooms. Wi-fi connectivity with power plug socket.

TOILET : Full tiles on flooring and wall in Bath & W.C. upto beam level.
Geyser point and exhaust fan outlet in bathrooms.
Concealed plumbing and high quality fittings and fixtures.
Branded sanitary ware of good quality.

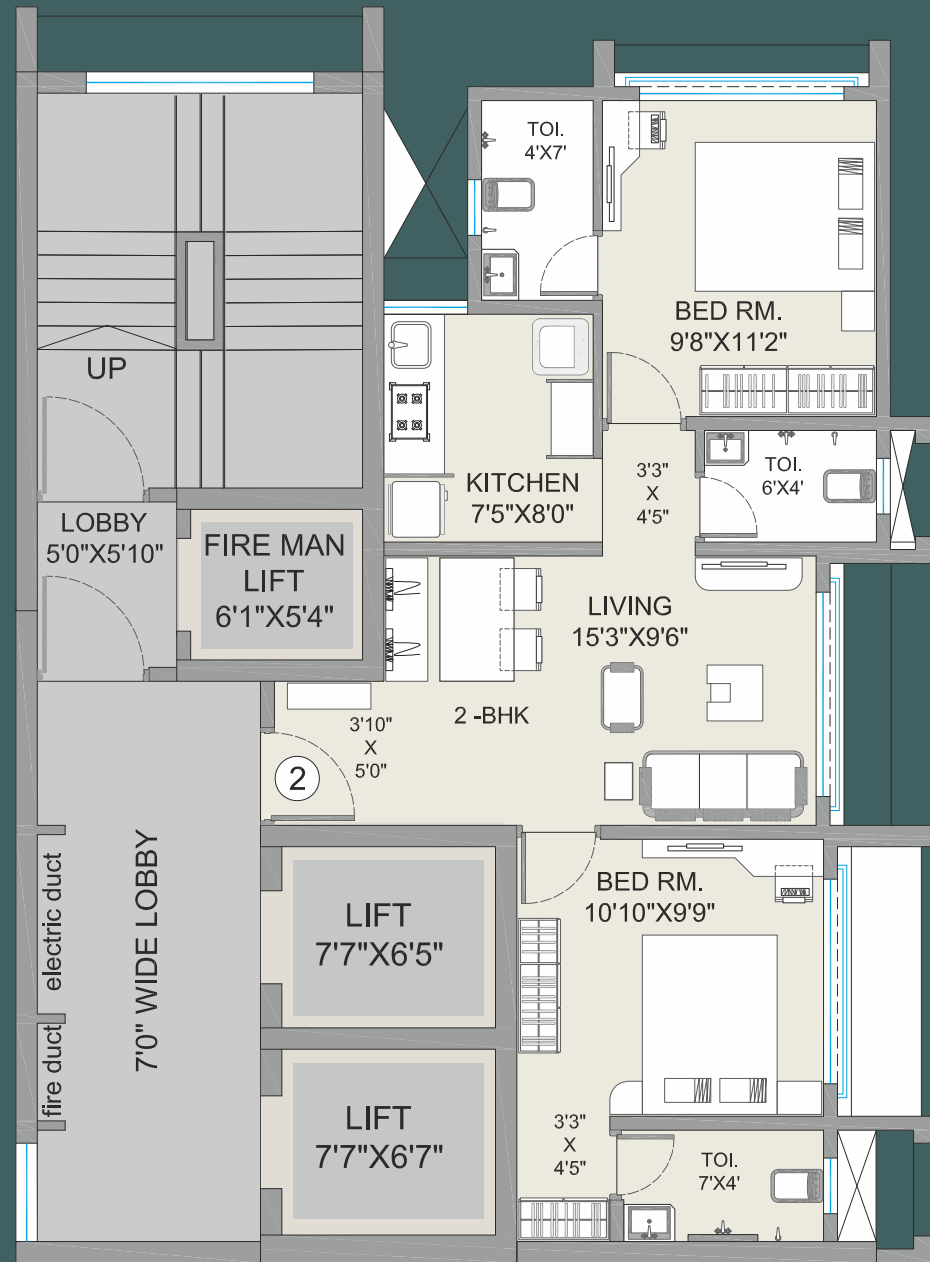


Interiors are built with an aesthetic appeal & addressing all the basic human needs at the same time using quality material.

2,3 & 21st

Floor Plan

Rera Carpet Area : 581 Sq. Ft. (2 BHK)



- Flat no. 1 Rera Carpet area 707 sq. ft (2 BHK)
- Flat No. 2 Rera Carpet area 422 sq. ft (1 BHK)
- Flat No. 3 Rera Carpet area 642 sq. ft (2 BHK)
- Flat No. 4 Rera Carpet area 480 sq. ft (1 BHK)

Typical

Floor Plan



18.30 MTR. WIDE ROAD

Where Happiness Resides



A short drive is all it takes to get transported in to your own cozy abode. It is easily accessible from Western

Express highway, S V. road, Link road, Metro and Borivali station. OM SAI SADAN is surrounded with

shopping centres, residential spaces along with luxurious and state of art lifestyle amenities.

It's close proximity to schools & colleges, hospitals, convenience stores, and pharmacies makes it a

convenient location to stay.

Very nearby are the entertainment destinations, where you can spend the quality time with your loved ones.

Nearby Places



STATIONS

METRO STATION - 1 KM
BORIVALI STATION - 3 KM

SCHOOLS

SVIS SCHOOL - 650 MTR.
SAI LEE INTERNATIONAL - 1 KM
DON BOSCO SCHOOL - 2 KM

COLLEGES

SVIS JR COLLEGE - 650 MTR.
GOKHALE COLLEGE - 2.9 KM.

MALLS

RAGHULEELA MALL - 4.2 KM.
ZOOM PLAZA MALL - 400 MTR.

WATER PARK & BEACH

PAGODA - 1 KM.
WATER KINGDOM - 1.2 KM
GORAI BEACH - 1.5 KM

HOSPITALS

SAI LEE HOSPITAL - 1.6 KM
PHOENIX HOSPITAL - 2 KM.

