

 Ready to Move
OC Received



ASHTA HEIGHTS
2&3 BHK Lifestyle Apartments

2&3 BHK

Lifestyle Apartments



Welcome to Ashtha Heights

Home for all your needs

Upgrade your lifestyle and reach the new heights At heights you start your life with the perfect balance of luscious green and luxury around you.

You not only live at Ashtha heights but you also enjoy the balance of the nature around you, build at the perfect location to cater you with all the necessities At Ashtha heights you are provided with the best amenities.

The new Ashtha heights is the perfect journey for your family.



Lavishly Designed Vertical Lifestyle

Standing tall, **ASHTHA HEIGHTS** is graciously designed structure, a perfect fusion of modern technology and appealing architecture, the structure and detailing of the project has been done to have spacious rooms with high roof. The large windows provide plentiful of sunlight and ventilation. Comfortable parking systems with two car elevators (lifts) for smooth movement for G + 2 Level podium parking to accommodate all apartments with high quality floor treatments & arrangements. The structure has green surrounding that provides a clean and fresh environment. The project is top notch structure with the best of the best amenities to lead a comfortable lifestyle.

The layout of the project is crafted to create an aura to give you your own breathing space. Redefine your comfort living here at **ASHTHA HEIGHTS** with your loved ones. Rainwater Harvesting, Mechanical Car Parking, Earthquake Resistant RCC framed structure along with all modern amenities at third level i.e. 50' high from ground level to reach everyone's need of health like: **Jogging Track, Yoga Room, Fully Equipped Fitness Center, Indoor and Outdoor Games, Children Park** etc.



Beautiful Spacious Entrance

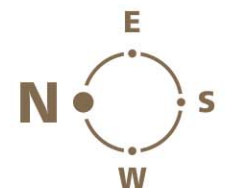
2&3 BHK

Lifestyle Apartments

Balcony Layout



4TH TO 9TH FLOOR PLAN



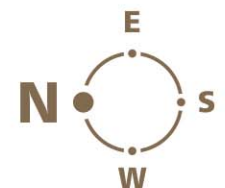
2&3 BHK

Lifestyle Apartments

Non-Balcony Layout



10TH & ABOVE FLOOR PLAN

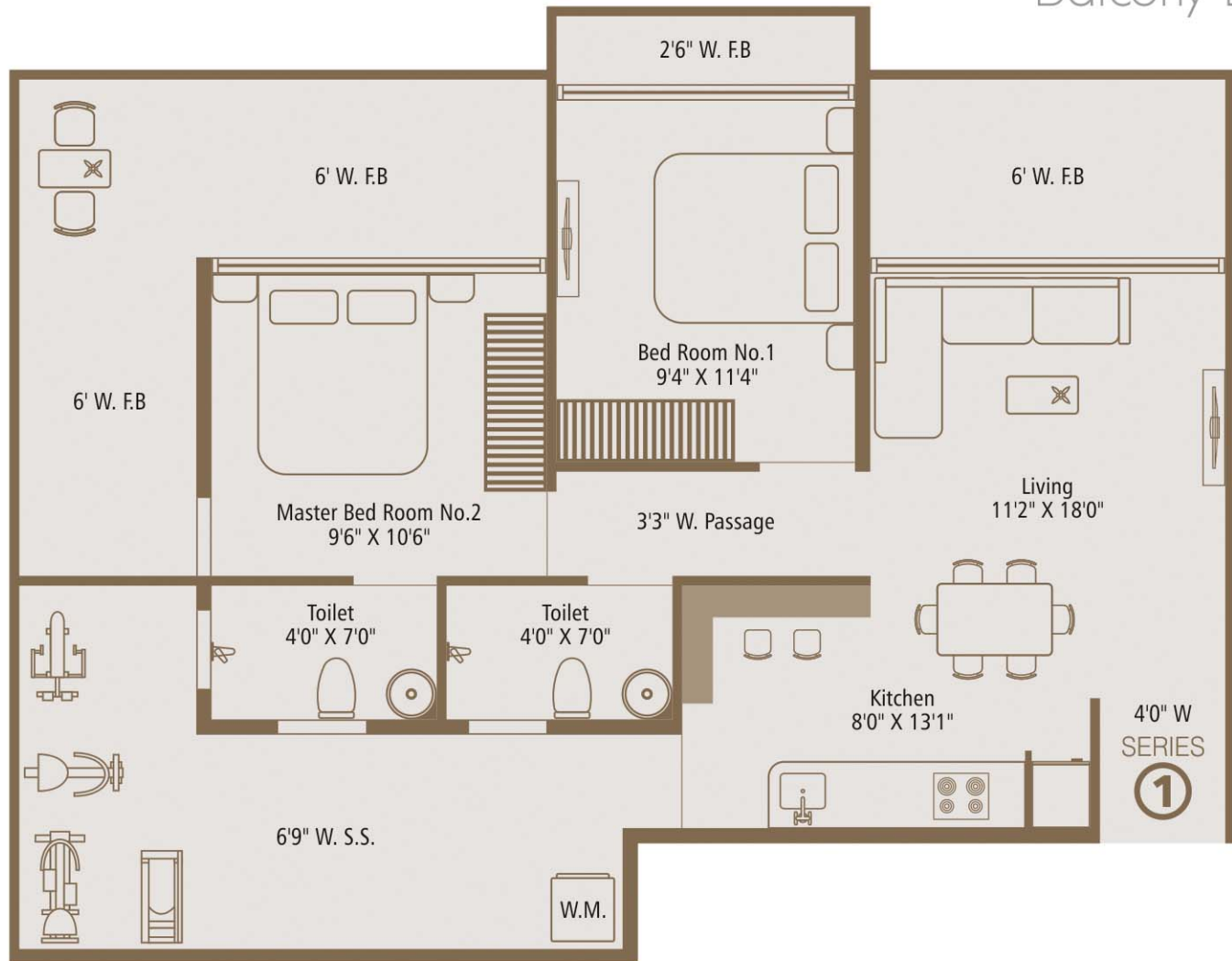


2&3 BHK

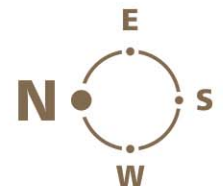
Lifestyle Apartments

| | |
|------------------|-----|
| Apartment | 537 |
| Balcony Enclosed | 45 |
| F. B. | 247 |
| S. A. | 161 |
| | 990 |

Balcony Layout



SERIES 1 - 4TH TO 9TH FLOOR

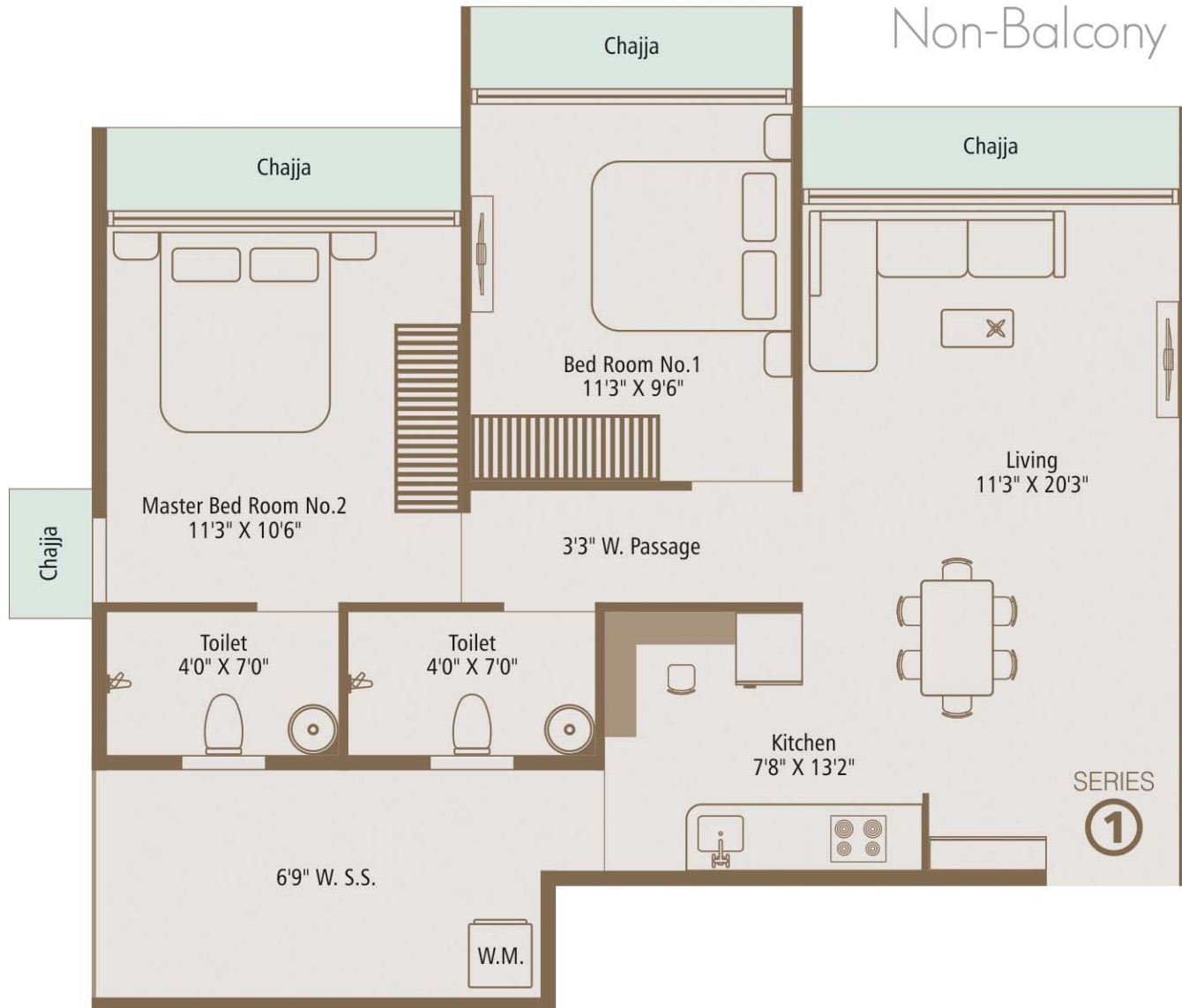


2&3 BHK

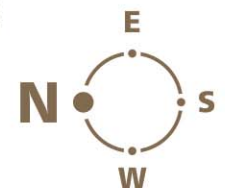
Lifestyle Apartments

| | |
|-----------|-----|
| Apartment | 610 |
| S. A. | 94 |
| | 704 |

Non-Balcony Layout



SERIES 1 - 10TH FLOOR & ABOVE

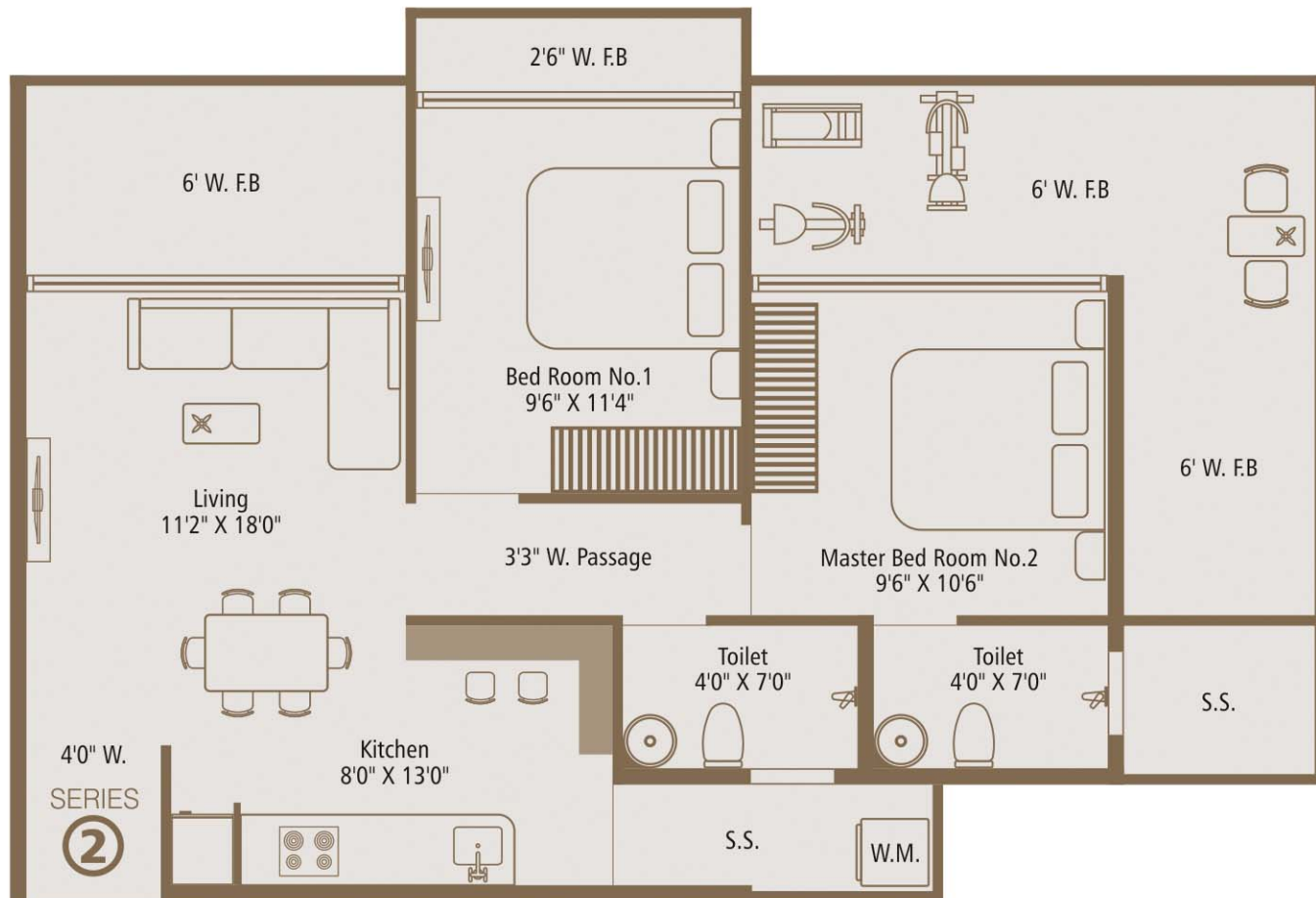


2&3 BHK

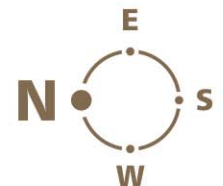
Lifestyle Apartments

| | |
|------------------|-----|
| Apartment | 536 |
| Balcony Enclosed | 45 |
| F. B. | 247 |
| S. A. | 60 |
| | 888 |

Balcony Layout



SERIES 2 - 4TH TO 9TH FLOOR

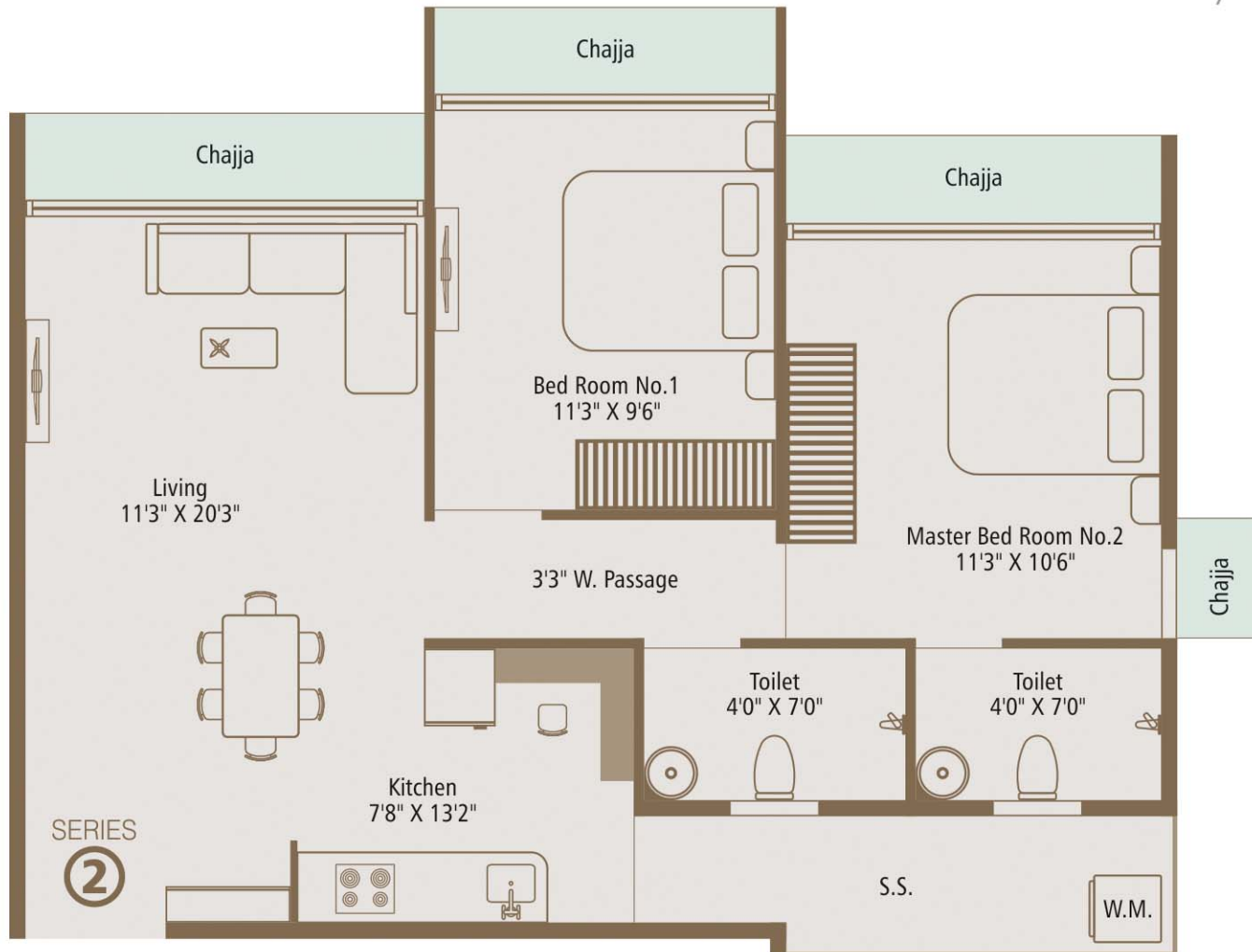


2&3 BHK

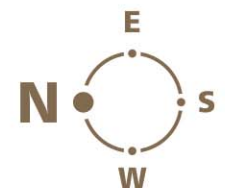
Lifestyle Apartments

| | |
|-----------|-----|
| Apartment | 610 |
| S. A. | 49 |
| | 659 |

Non-Balcony Layout



SERIES 2 - 10TH FLOOR & ABOVE

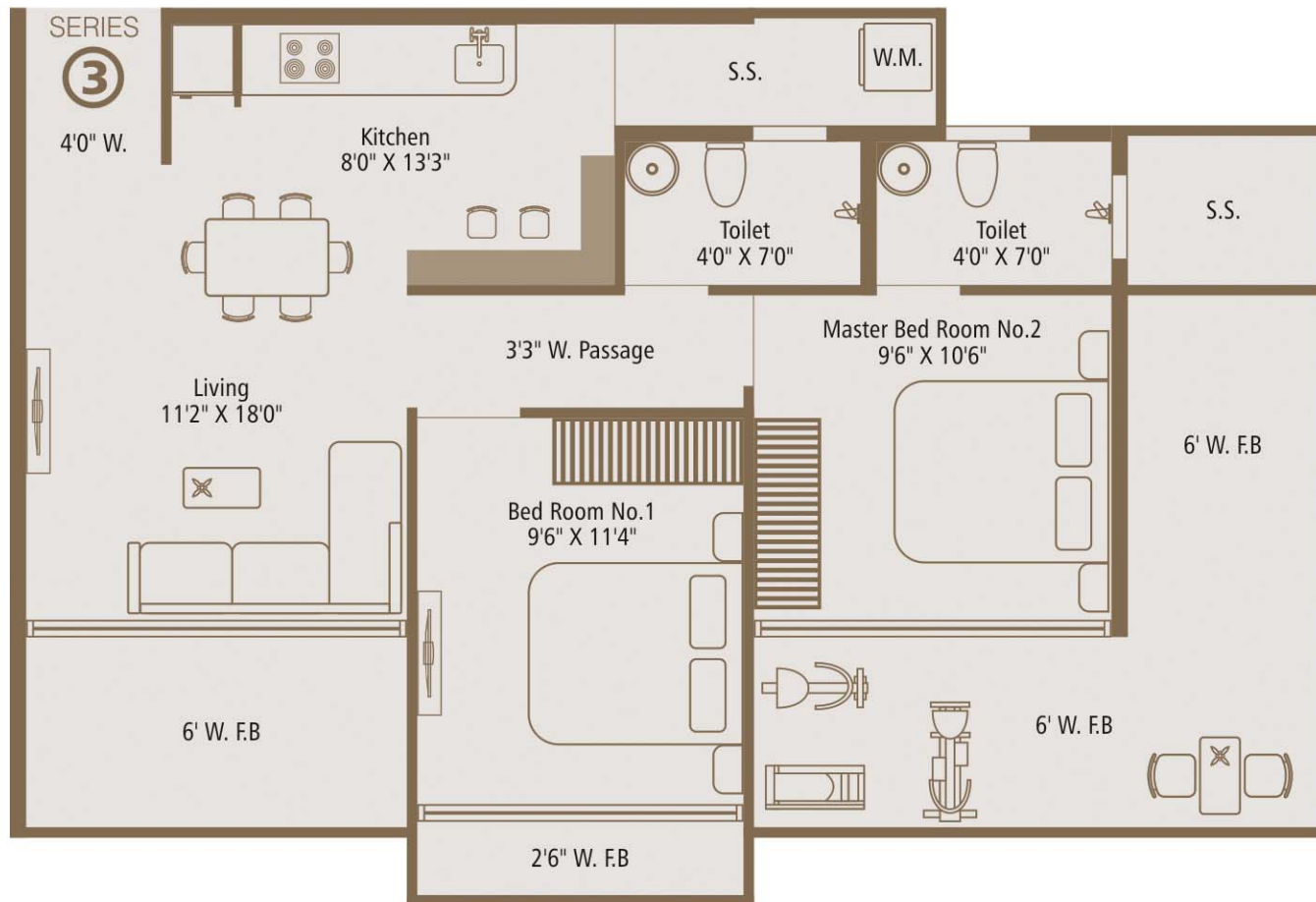


2&3 BHK

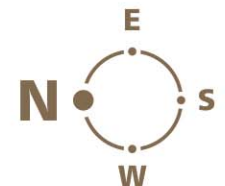
Lifestyle Apartments

| | |
|------------------|-----|
| Apartment | 536 |
| Balcony Enclosed | 50 |
| F. B. | 247 |
| S. A. | 60 |
| Other | 18 |
| | 911 |

Balcony Layout



SERIES 3 - 4TH TO 9TH FLOOR

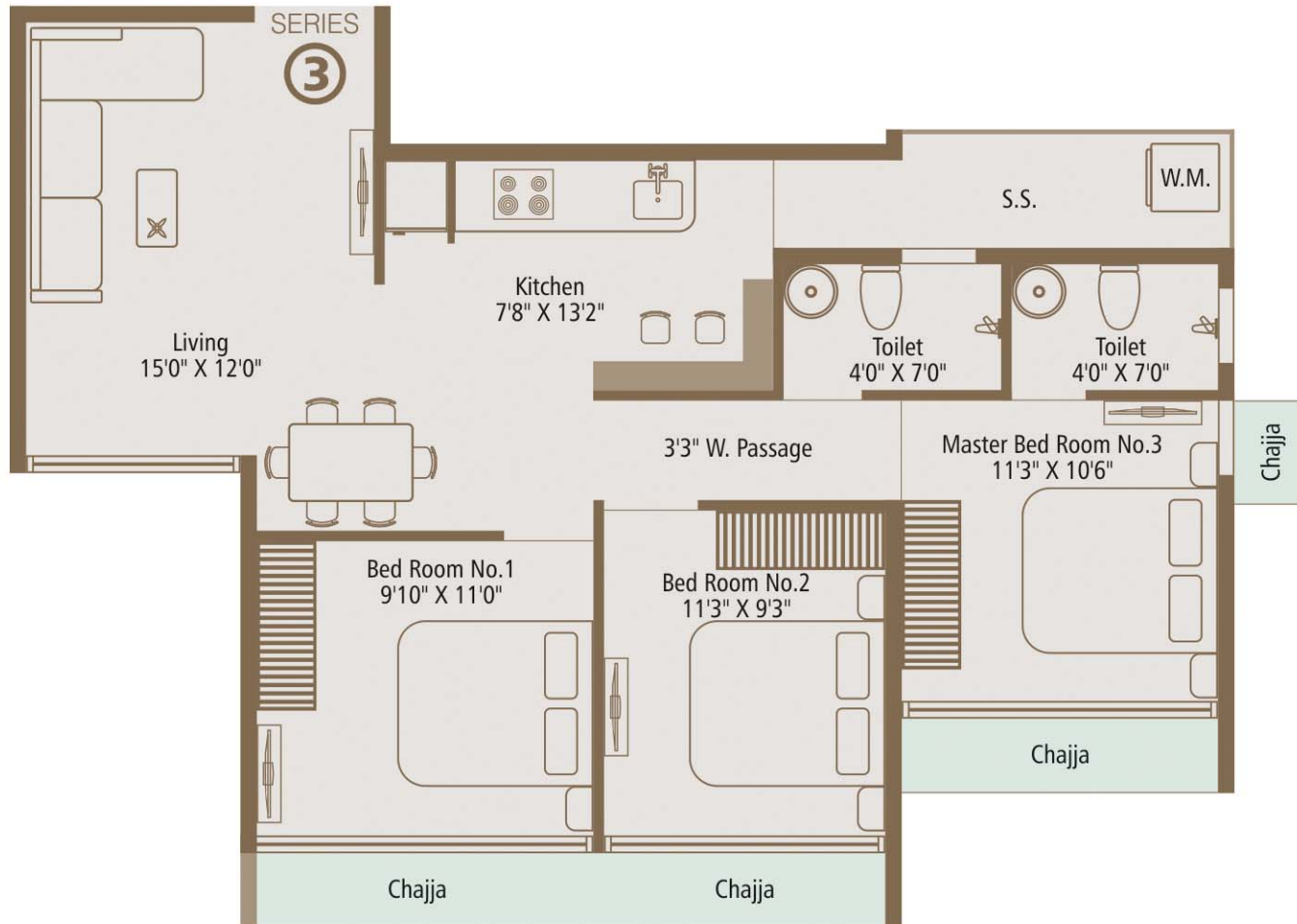


2&3 BHK

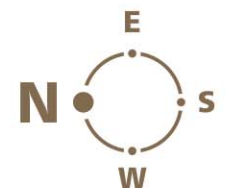
Lifestyle Apartments

| | |
|-----------|-----|
| Apartment | 756 |
| S. A. | 49 |
| | 805 |

Non-Balcony Layout



SERIES 3 - 10TH FLOOR & ABOVE

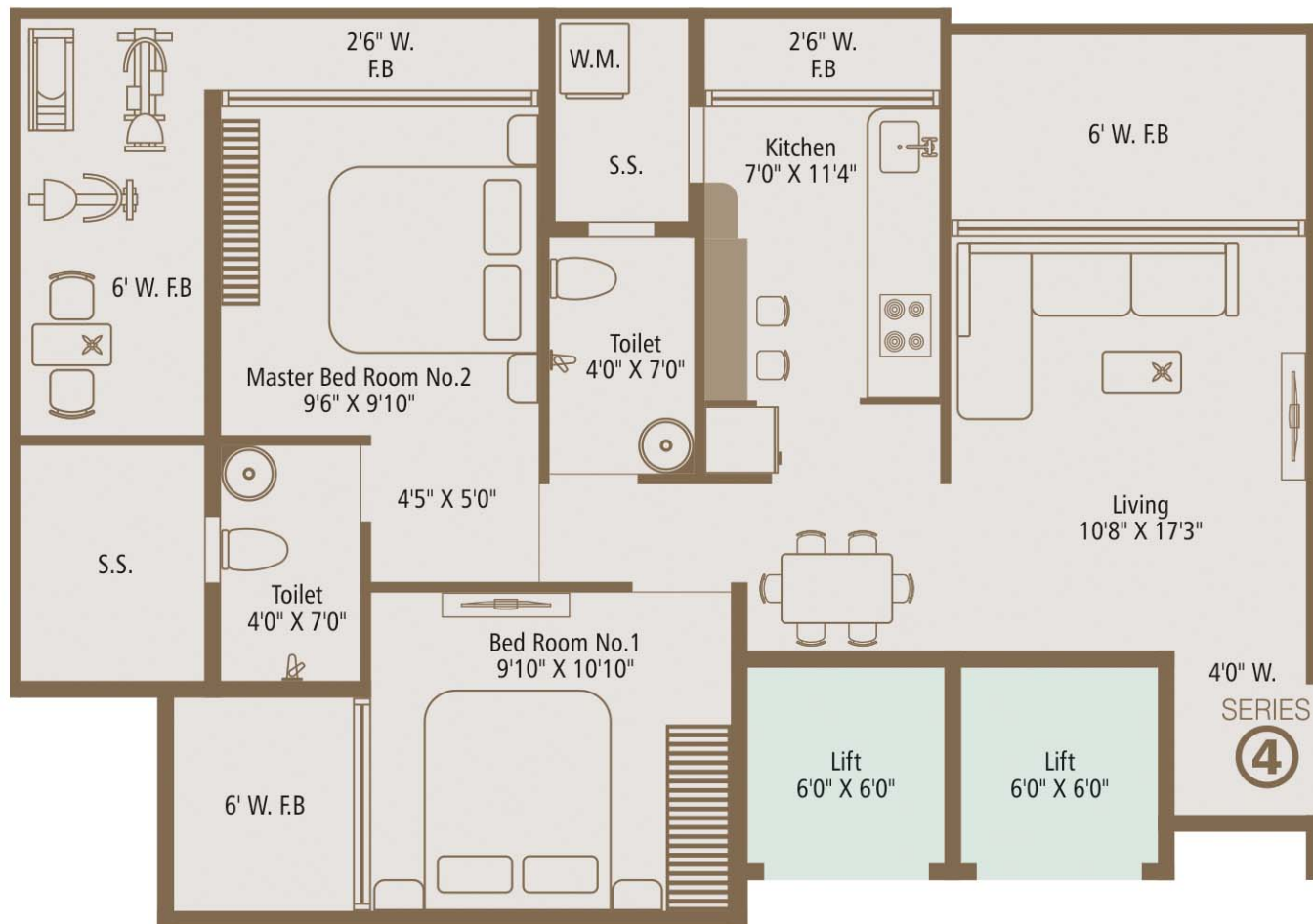


2&3 BHK

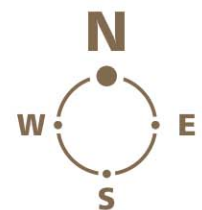
Lifestyle Apartments

| | |
|------------------|-----|
| Apartment | 547 |
| Balcony Enclosed | 37 |
| F. B. | 216 |
| S. A. | 72 |
| Other | 18 |
| | 890 |

Balcony Layout



SERIES 4 - 4TH TO 9TH FLOOR

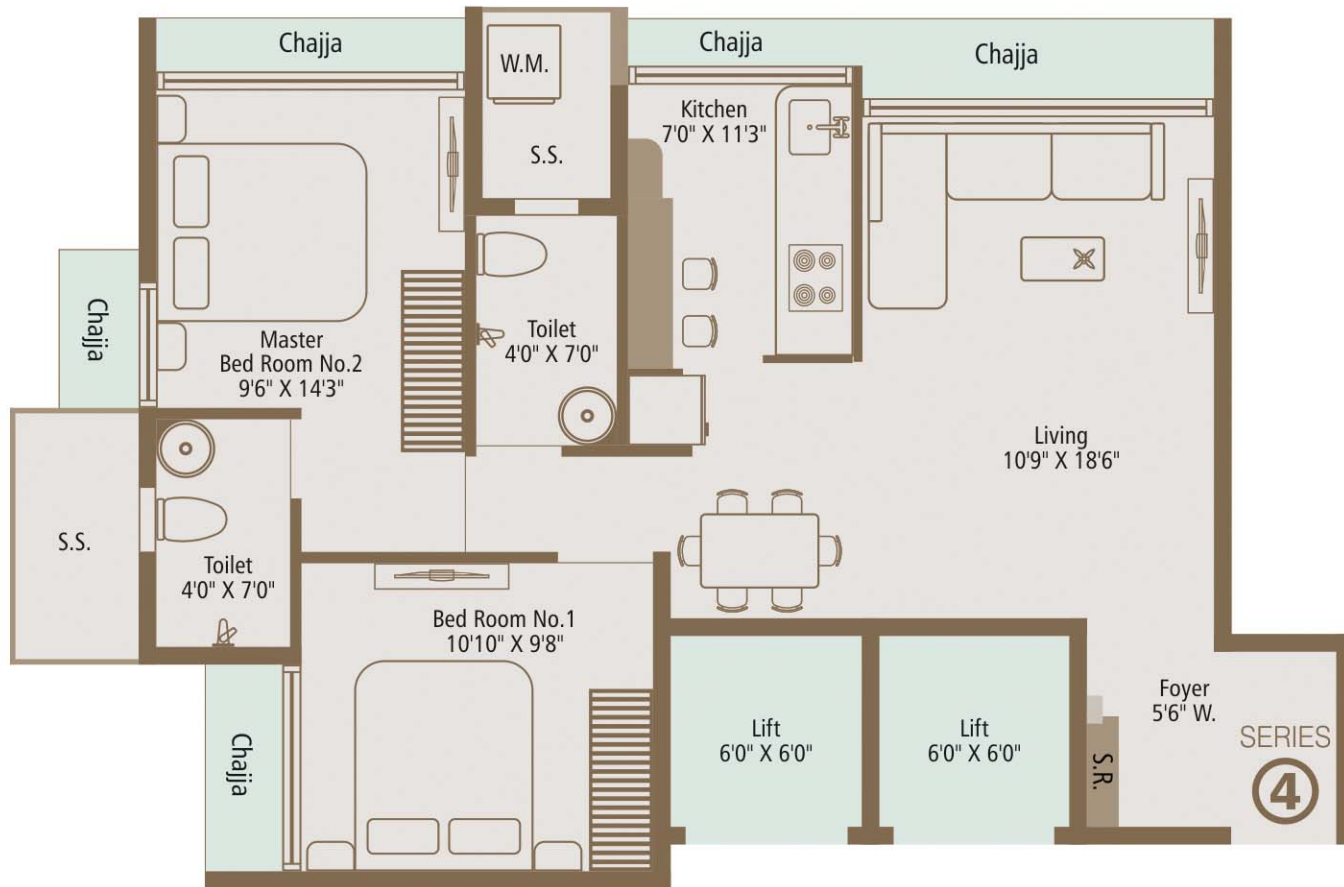


2&3 BHK

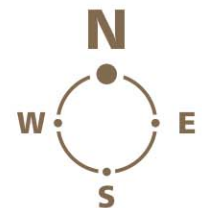
Lifestyle Apartments

| | |
|-----------|-----|
| Apartment | 656 |
| S. A. | 51 |
| | 701 |

Non-Balcony Layout

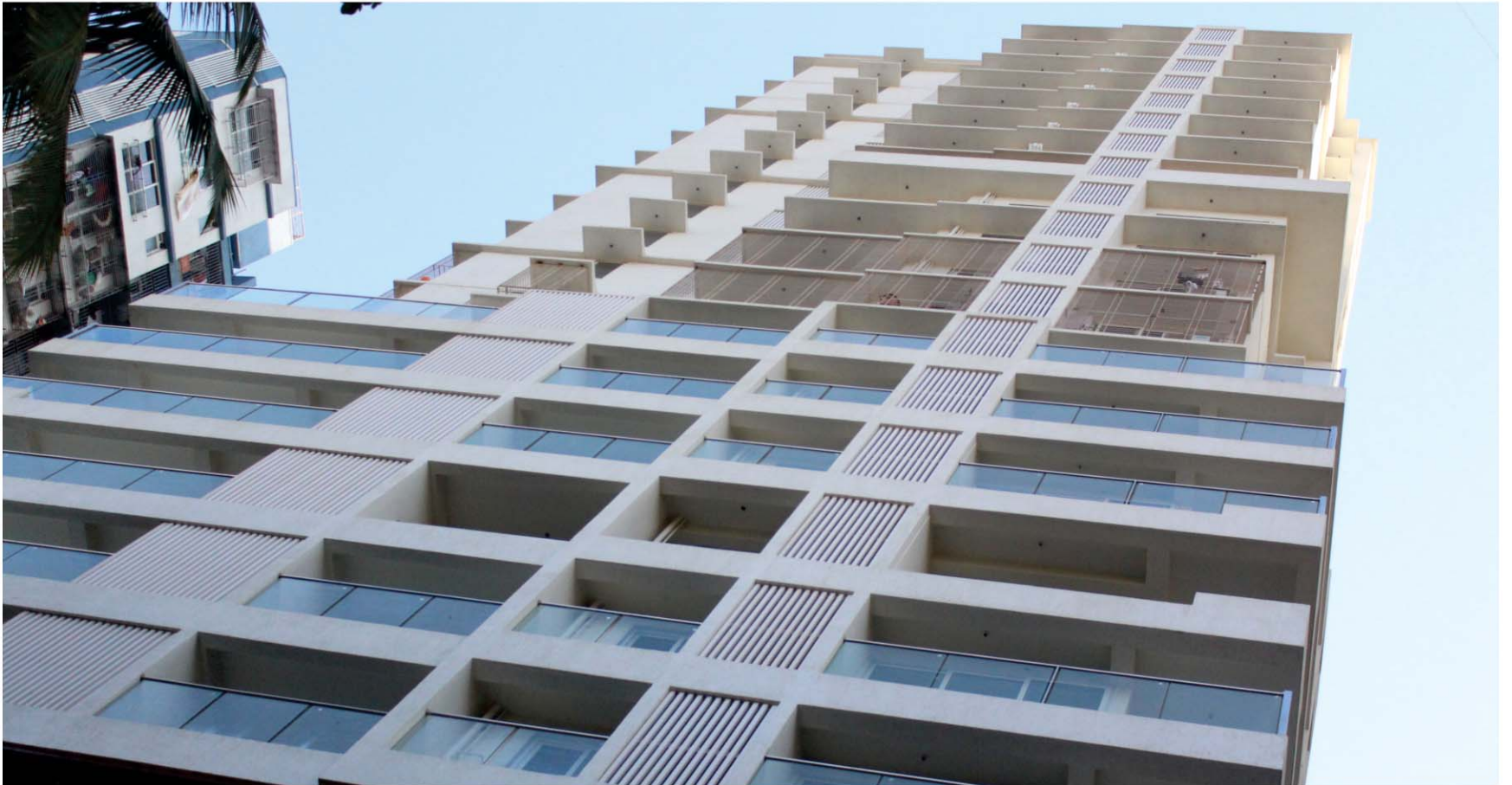


SERIES 4 - 10TH FLOOR & ABOVE



ACTUAL
SITE PHOTOS

EXTERIOR VIEW



LAVISH ENTRANCE



FITNESS CENTER



INDOOR GAMES



YOGA SPACE



CONFERENCE ROOM



KIDS PLAY AREA



Amenities



Yoga Space



Skating



Senior Citizen Seatout



Fitness Centre



Walking Track



CCTV Security



Kids Play Area



Indoor Games



Ample Car Parking

and Many More...

SITE LOCATION

