



SAYBA  
EMERALD

— BANDRA —

NEARING POSSESSION  
SELECT 2 BED RESIDENCES

# INTRODUCING THE EMERALD OF BANDRA



Sayba Emerald is a classic example of what can be achieved when luxury meets an opulent lifestyle. Sayba Emerald is spread across a vast expanse with a rare amalgamation of cutting-edge engineering, state-of-the-art architecture and skilled craftsmanship. It gives you everything you need for life in the fast lane.

# EVERYTHING YOU NEED IS JUST AROUND THE CORNER

Bandra, an iconic location of Mumbai, offers you an easy access to a great lifestyle and a high standard of living. Bandra is one of the fastest-growing popular localities of Mumbai. If ever there were an opportunity for the most convenient life to be within reach, Sayba Emerald has to be your address.



## CONNECTIVITY

- Bandra Station – 100 m
- Western Express Highway – 1.1 km
- BKC – 3.5 km
- Chhatrapati Shivaji Maharaj International Airport – 11.6 km

## HEALTHCARE

- Holy Family Hospital – 1.7 km
- S L Raheja Hospital – 1.8 km
- Hinduja Hospital – 3.2 km
- Lilavati Hospital – 3.3 km
- Asian Heart Hospital – 3.8 km

## EDUCATION

- National College – 2.5 km
- St. Andrew's College – 2.7 km
- Ascend International School – 3.6 km

## SHOPPING MALLS & RESTAURANTS

- Elco Market – 1.1 km
- Jio World Drive – 3.7 km
- Nature's Basket – 1.5 km
- Foodhall – 2.9 km

## ENTERTAINMENT & LEISURE

- PVR Bandra – 950 m
- Bandra Gymkhana – 2.3 km
- Otters Club – 2.4 km
- Taj Lands End – 3.4 km
- Joggers Park – 2.4 km

# A GLIMPSE INSIDE THE APARTMENTS

Sayba Emerald is a rare collection of opulent residential spaces that come with modern amenities. Each floor comprises exquisitely crafted luxurious 2 bed residences that provide an elevated lifestyle. The Emerald Collection is developed with great detailing and perfection. These brightly lit and cross-ventilated luxurious abodes are a dream destination, perfectly located at Mumbai's iconic address – Bandra.

- Italian Flooring in Living Room, Bedrooms and Dining Room\*
- Vitrified Flooring in Kitchen
- Walls & Ceiling Painted with Superior Quality Paint
- Ample Electrical Points with Modular Switches
- Concealed Copper Wiring MCB and ELCBs
- Anodized/Powder-Coated Aluminum Sliding Windows
- Designer Ceramic Tiles on Walls upto Door Height
- Telephone & Cable TV Points in Living Room and Bedrooms
- Provision for Exhaust Fan and Geyser
- Premium Sanitaryware, and Bathroom Fittings



REPRESENTATIVE IMAGE

ROOFTOP LEISURES  
**CRAFTED JUST**  
**FOR YOU**



# SWIMMING POOL



REPRESENTATIVE IMAGE

# KIDS' PLAY AREA



REPRESENTATIVE IMAGE



# CRICKET NET



REPRESENTATIVE IMAGE

# GREEN TURF



REPRESENTATIVE IMAGE

# OPEN GYMNASIUM



REPRESENTATIVE IMAGE

# OPEN DECK AREA



REPRESENTATIVE IMAGE

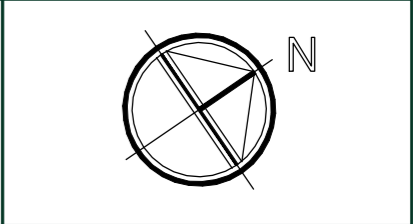
# PLANS



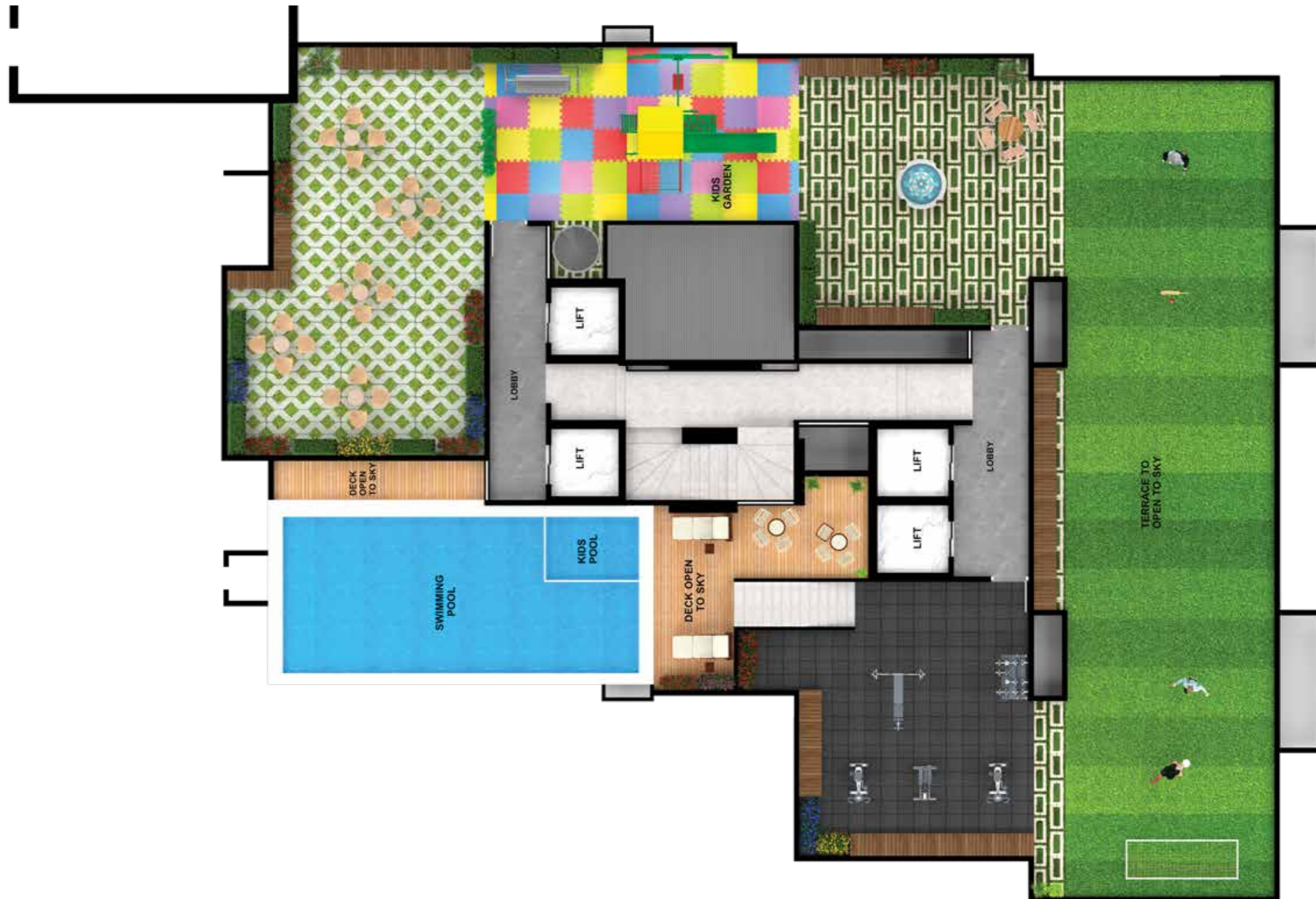


**EMERALD**  
BANDRA

**COMMERCIAL FLOOR PLAN**

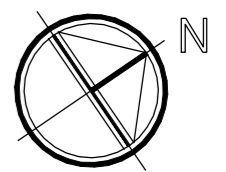


Disclaimer: The plans, specification, elevation, conceptual designs, visuals, images, configurations, dimensions, photographs, furniture, fixtures, amenities, facilities, etc. are indicative, tentative and strictly provided for representation purpose only and are subject to requisite approvals from the competent authorities or otherwise and the Promoter reserves their rights to make necessary changes, addition, modification and alterations at its sole discretion. This does not constitute an offer and/or contract of any nature whatsoever between the Promoter and the intended recipient /reader/viewer/interested party who should independently verify and satisfy himself/herself/themselves/itself before any conclusive decision. All brand names and trademarks are reserved. Stamp duty and registration charges shall be applicable as per applicable laws. Government taxes, charges & other charges will be charged extra. \*T&C Apply.



**EMERALD**  
BANDRA

## ROOFTOP AMENITIES PLAN

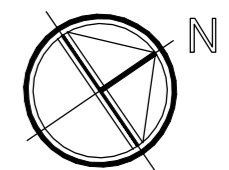


Disclaimer: The plans, specification, elevation, conceptual designs, visuals, images, configurations, dimensions, photographs, furniture, fixtures, amenities, facilities, etc. are indicative, tentative and strictly provided for representation purpose only and are subject to requisite approvals from the competent authorities or otherwise and the Promoter reserves their rights to make necessary changes, addition, modification and alterations at its sole discretion. This does not constitute an offer and/or contract of any nature whatsoever between the Promoter and the intended recipient /reader/viewer/interested party who should independently verify and satisfy himself/herself/themselves/itself before any conclusive decision. All brand names and trademarks are reserved. Stamp duty and registration charges shall be applicable as per applicable laws. Government taxes, charges & other charges will be charged extra. \*T&C Apply.



**EMERALD**  
BANDRA

**TYPICAL FLOOR PLAN**



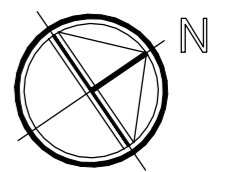
Disclaimer: The plans, specification, elevation, conceptual designs, visuals, images, configurations, dimensions, photographs, furniture, fixtures, amenities, facilities, etc. are indicative, tentative and strictly provided for representation purpose only and are subject to requisite approvals from the competent authorities or otherwise and the Promoter reserves their rights to make necessary changes, addition, modification and alterations at its sole discretion. This does not constitute an offer and/or contract of any nature whatsoever between the Promoter and the intended recipient /reader/viewer/interested party who should independently verify and satisfy himself/herself/themselves/itself before any conclusive decision. All brand names and trademarks are reserved. Stamp duty and registration charges shall be applicable as per applicable laws. Government taxes, charges & other charges will be charged extra. \*T&C Apply.



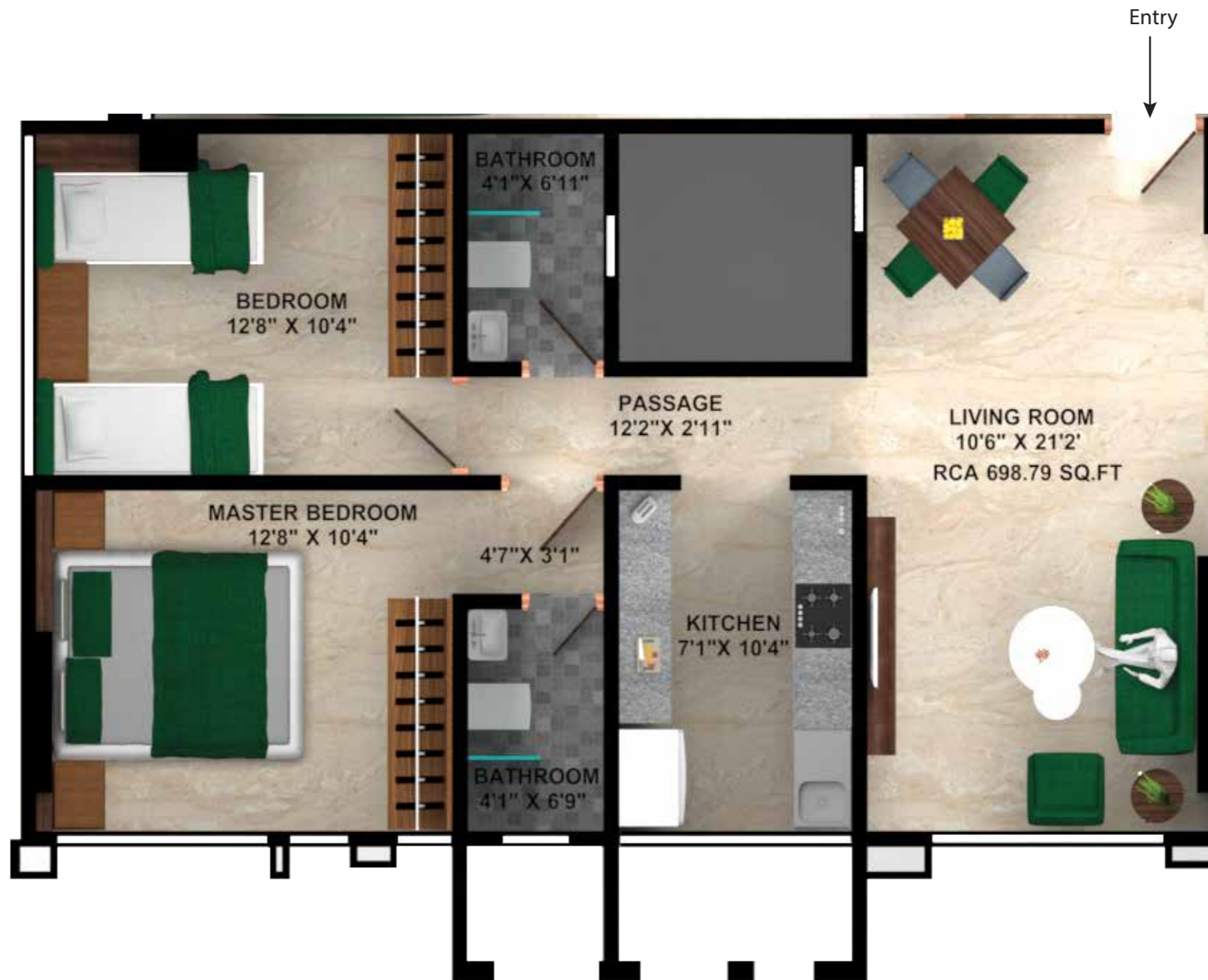


**EMERALD**  
BANDRA

**FLAT NO. 1**  
**RERA CARPET AREA 488 SQ.FT.**

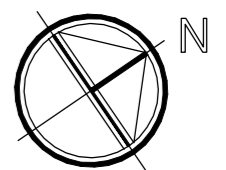


Disclaimer: The plans, specification, elevation, conceptual designs, visuals, images, configurations, dimensions, photographs, furniture, fixtures, amenities, facilities, etc. are indicative, tentative and strictly provided for representation purpose only and are subject to requisite approvals from the competent authorities or otherwise and the Promoter reserves their rights to make necessary changes, addition, modification and alterations at its sole discretion. This does not constitute an offer and/or contract of any nature whatsoever between the Promoter and the intended recipient /reader/viewer/interested party who should independently verify and satisfy himself/herself/themselves/itself before any conclusive decision. All brand names and trademarks are reserved. Stamp duty and registration charges shall be applicable as per applicable laws. Government taxes, charges & other charges will be charged extra. \*T&C Apply.

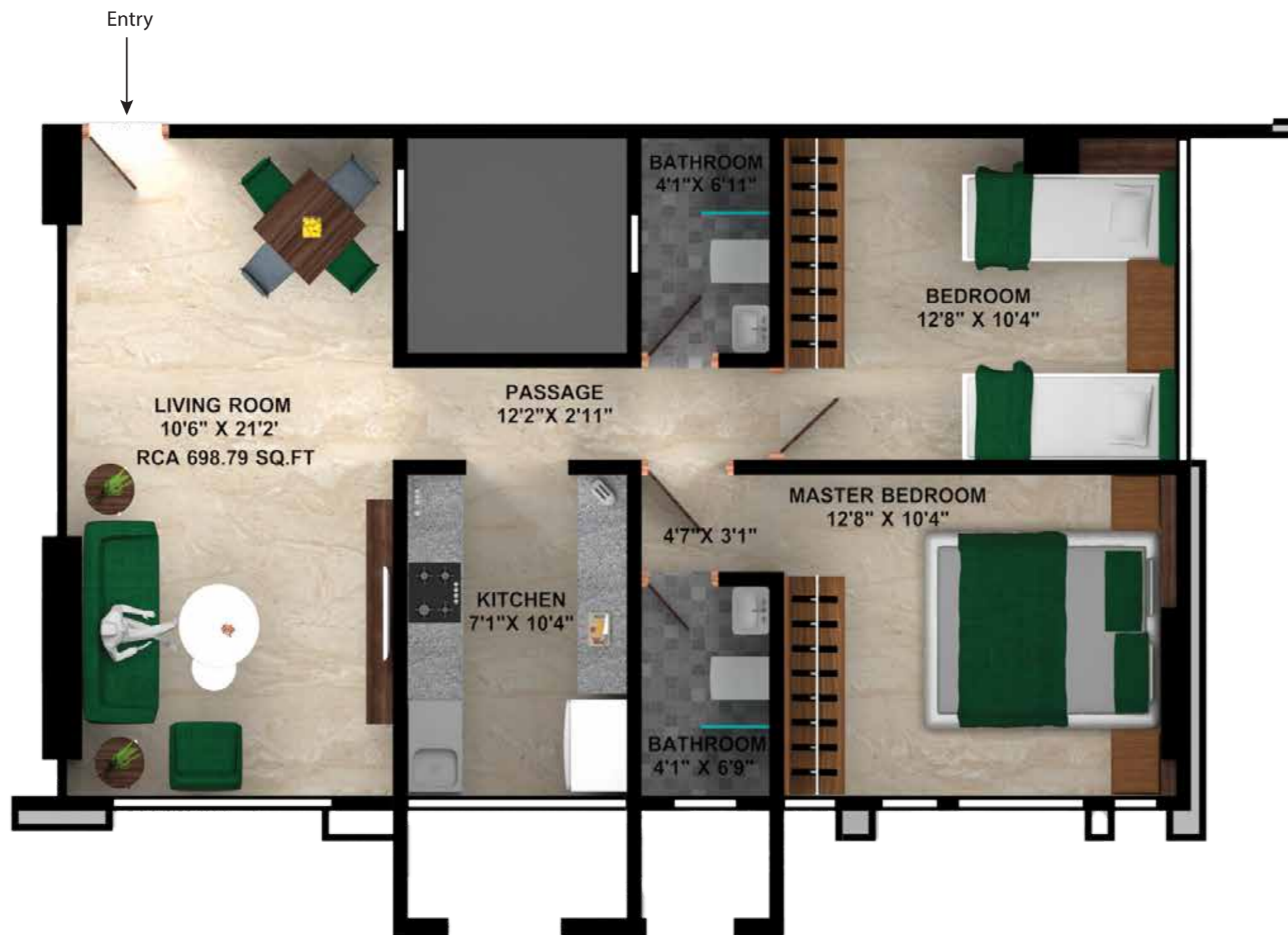


**EMERALD**  
BANDRA

**FLAT NO. 2**  
**RERA CARPET AREA 698 SQ.FT.**

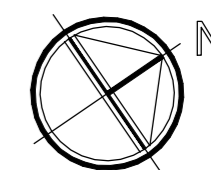


Disclaimer: The plans, specification, elevation, conceptual designs, visuals, images, configurations, dimensions, photographs, furniture, fixtures, amenities, facilities, etc. are indicative, tentative and strictly provided for representation purpose only and are subject to requisite approvals from the competent authorities or otherwise and the Promoter reserves their rights to make necessary changes, addition, modification and alterations at its sole discretion. This does not constitute an offer and/or contract of any nature whatsoever between the Promoter and the intended recipient /reader/viewer/interested party who should independently verify and satisfy himself/herself/themselves/itself before any conclusive decision. All brand names and trademarks are reserved. Stamp duty and registration charges shall be applicable as per applicable laws. Government taxes, charges & other charges will be charged extra. \*T&C Apply.

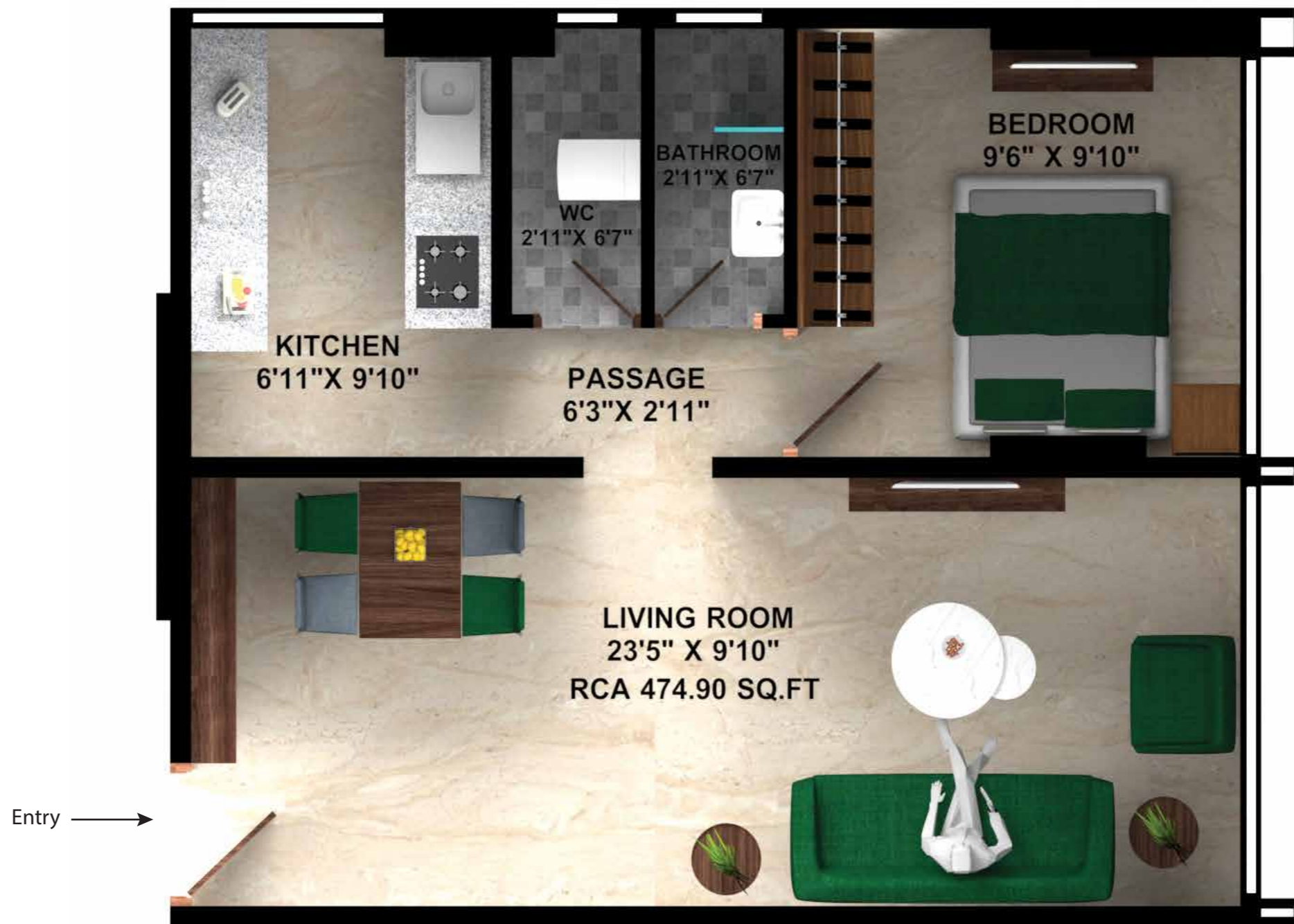


**EMERALD**  
BANDRA

**FLAT NO. 3**  
**RERA CARPET AREA 698 SQ.FT.**

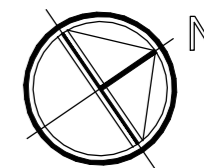


Disclaimer: The plans, specification, elevation, conceptual designs, visuals, images, configurations, dimensions, photographs, furniture, fixtures, amenities, facilities, etc. are indicative, tentative and strictly provided for representation purpose only and are subject to requisite approvals from the competent authorities or otherwise and the Promoter reserves their rights to make necessary changes, addition, modification and alterations at its sole discretion. This does not constitute an offer and/or contract of any nature whatsoever between the Promoter and the intended recipient /reader/viewer/interested party who should independently verify and satisfy himself/herself/themselves/itself before any conclusive decision. All brand names and trademarks are reserved. Stamp duty and registration charges shall be applicable as per applicable laws. Government taxes, charges & other charges will be charged extra. \*T&C Apply.



**EMERALD**  
BANDRA

**FLAT NO. 4**  
**RERA CARPET AREA 475 SQ.FT.**



Disclaimer: The plans, specification, elevation, conceptual designs, visuals, images, configurations, dimensions, photographs, furniture, fixtures, amenities, facilities, etc. are indicative, tentative and strictly provided for representation purpose only and are subject to requisite approvals from the competent authorities or otherwise and the Promoter reserves their rights to make necessary changes, addition, modification and alterations at its sole discretion. This does not constitute an offer and/or contract of any nature whatsoever between the Promoter and the intended recipient /reader/viewer/interested party who should independently verify and satisfy himself/herself/themselves/itself before any conclusive decision. All brand names and trademarks are reserved. Stamp duty and registration charges shall be applicable as per applicable laws. Government taxes, charges & other charges will be charged extra. \*T&C Apply.



SAYBA GROUP - A Name That Resonates Perfection  
In Timely Delivery & Perfect Planning.

1000+  
Happy Families

35+  
Projects

20+  
Years of Experience

---

## Our Landmark Projects Delivered



Sayba Icon - Kurla (W)



Sayba Star Deluxe - Kurla (E)



Sayba Residency - Kurla (E)



Sayba Annex - Kurla (E)



Sayba Pearl Hans - Kurla (W)



SAYBA  
EMERALD   
— BANDRA —

**NEARING POSSESSION**  
SELECT 2 BED RESIDENCES

SAYBA EMERALD Near Lucky Restaurant, Opposite Bandra Bus Depot, Bandra West, Mumbai - 400 050.

 This project has been registered under MahaRERA as P51800032059 & is available on the website [www.https://maharera.mahaonline.gov.in](https://maharera.mahaonline.gov.in) | \*T&C Apply.