

CHOOSE KARO CALM LIVING

Jiyo Life Khul Ke @ Apna Malwani. Malad



GROWMORE
EMERALD





GrowMore Space is a conglomerate of experienced civil engineers, architects, structural engineers, RCC consultants, legal advisors, promoters and builders who have successfully handled projects of huge magnitudes across the city of Mumbai and suburbs. The company is widely known for creating the most affordable budget homes.

We have also provided consultancy services to MHADA (societies) and other societies for affordable living. With 3+ decades of experience, our founding figure Shri. Jayantilal Shethia has played a pivotal role in navigating various development projects in suburban Charkop - Kandivali, Malwani - Malad, and Gorai - Borivali.

And with the recent success of GrowMore BLISS (Malwani), with 100+ families living a blissful and affordable life in A-Wing, we are confident that our latest project, GrowMore Emerald – the embodiment of calm and peaceful living at Malad (W) – will capture the heartbeat and imagination of every Malwanikar.

GROWMORE EMERALD

22 Storeys
With Good Ceiling Height

1BHK & 2BHK
Spacious Apartments

RERA Carpet Area:
Starting @ 367sqft

Prices start at
Rs 44.9 Lacs Onwards

Convenient EMI Schemes
& Loan Assistance



Clear Sea View from
Higher Floors



3 Elevators of Reputed Brands
– till the Terrace Floor



Earthquake & Wind
Resistant Design



RCC Frame Structure



Dedicated Refuge Area
at 8th & 15th Floors



GROWMORE EMERALD



Home is where those warm, short and heavy breaths of work life turn into cool, long and fresh breathers of family life. Home is where those tense muscles relax, that forehead sweat subtly evaporates in the soothing breeze, and those frowns become beaming smiles. Home is where GrowMore Emerald is, located at Malad (W), the king of western suburbs.

GrowMore Emerald is beautifully nestled at a point that offers both: a doorway into city life full of amenities, and an entryway into lush greens, quietness, and clean air. At Emerald, you can choose from a range of reasonably priced, lavish 1BHK or 2BHK homes. Choose to jiyo life khul ke at your own terms at Apna Malwani, Apna Malad.

CHOOSE TO BE CONTENT WITH YOUR CHOICES!



LIVING ROOM



KITCHEN

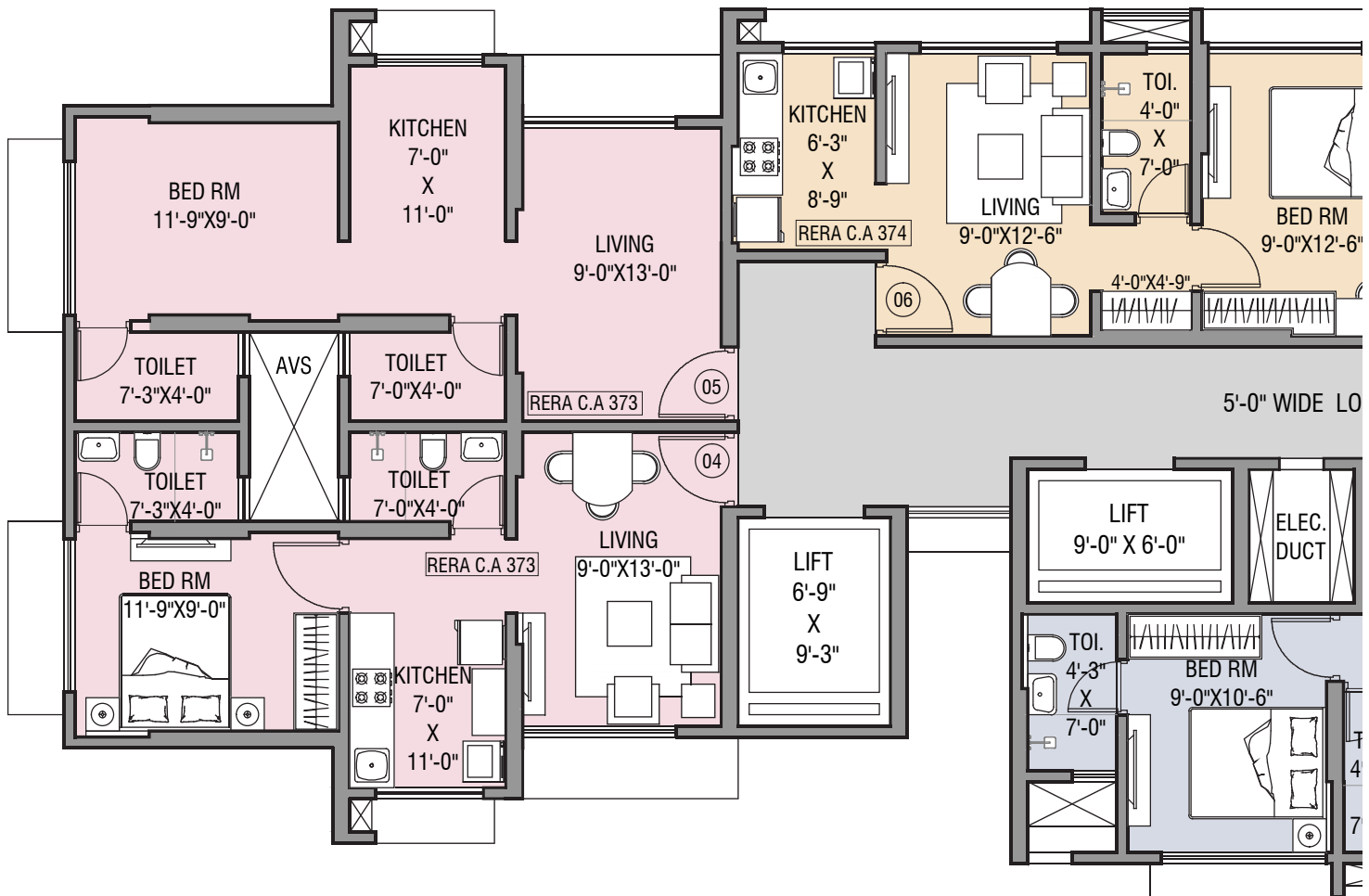


BEDROOM 1



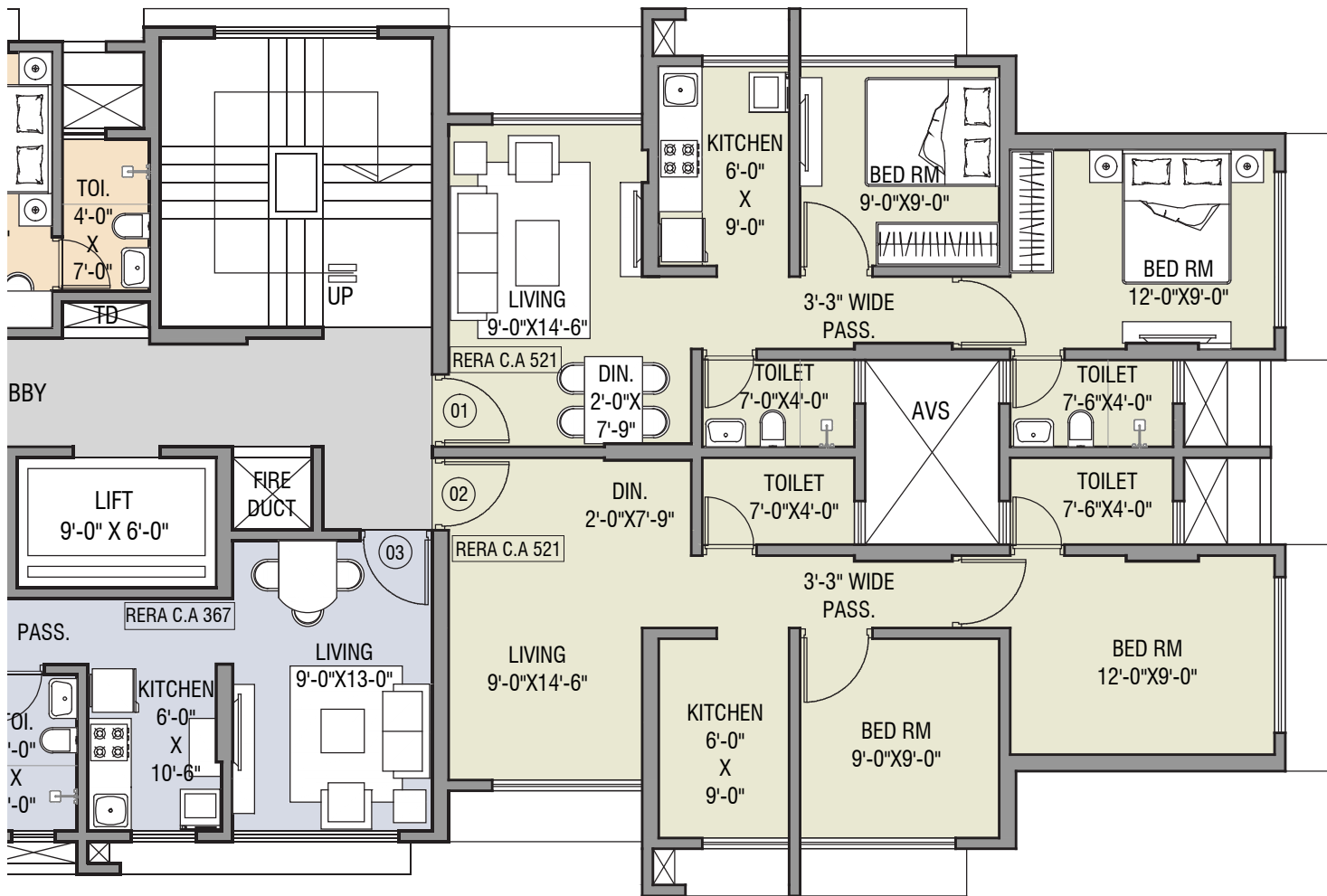
BEDROOM 2

CHOOSE WHAT'S BEST FOR YOUR FAMILY!



TYPICAL FLOOR PLAN

1:100 (2ND TO 7TH, 9TH TO 14TH & 16TH TO 22ND FLOOR)





Inside-Apartment Amenities

- Elegant Vitrified Tile Flooring
- Granite Kitchen Platform with SS Sink
- Dado Glaze Tiles up to Window Height
- Concealed Electrical Copper Wiring
- Decorative Modular Switches and
MCB System
- Decorative Flush Main Door
- Telephone & Internet Points
- Pop Finish Internal Wall with
Acrylic Emulsion Paint
- High-Quality Anodized Aluminum
Sliding Windows



Typical 1BHK - Isometric View



Typical 2BHK - Isometric View

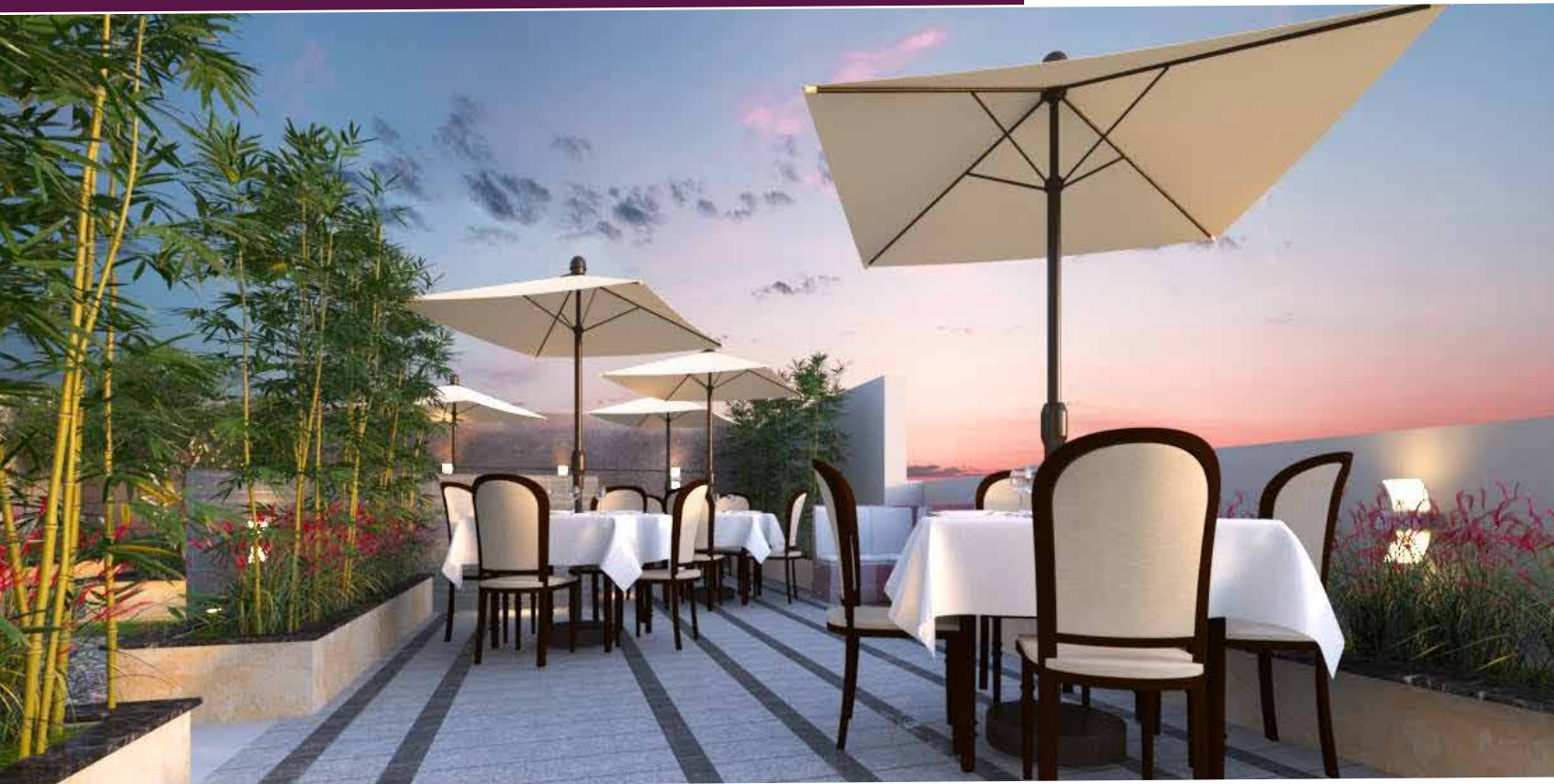


CHOOSE EXCITEMENT... WAY HIGH YET UNDER THE SKY

Terrace Amenities

- Children's Play Area
- Yoga, Meditation & Reflexology Park
- Sky Dining & Senior Citizen Area
- Fitness Center
- Stilt Parking Facilities
- Landscaped Area at Terrace

SKY DINING



Fitness Center



Reflexology



Landscaped Garden

Children's Play Area

