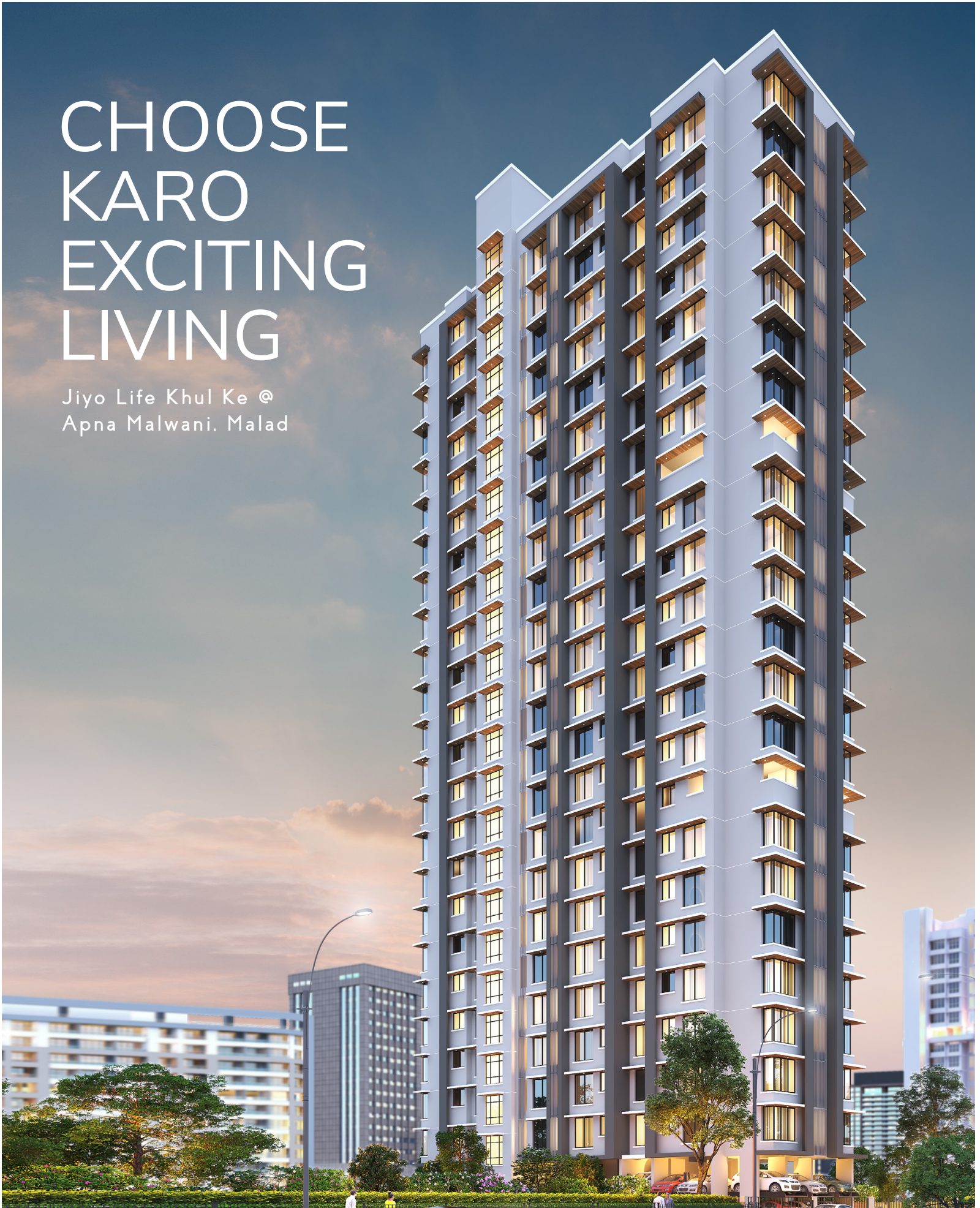


CHOOSE KARO EXCITING LIVING

Jiyo Life Khul Ke @
Apna Malwani, Malad





GrowMore Space is a conglomerate of experienced civil engineers, architects, structural engineers, RCC consultants, legal advisors, promoters and builders who have successfully handled projects of huge magnitudes across the city of Mumbai and suburbs. The company is widely known for creating the most affordable budget homes.

We have also provided consultancy services to MHADA (societies) and other societies for affordable living. With 3+ decades of experience, our founding figure Shri. Jayantilal Shethia has played a pivotal role in navigating various development projects in suburban Charkop - Kandivali, Malwani - Malad, and Gorai - Borivali.

And with the recent success of GrowMore BLISS (Malwani), with 100+ families living blissfully and affordably, we are confident that our latest project GrowMore Onyx – the epitome of exciting living at Malad (W) – will add another gem into the crown of Malwani, Malad (W).

Project Features:

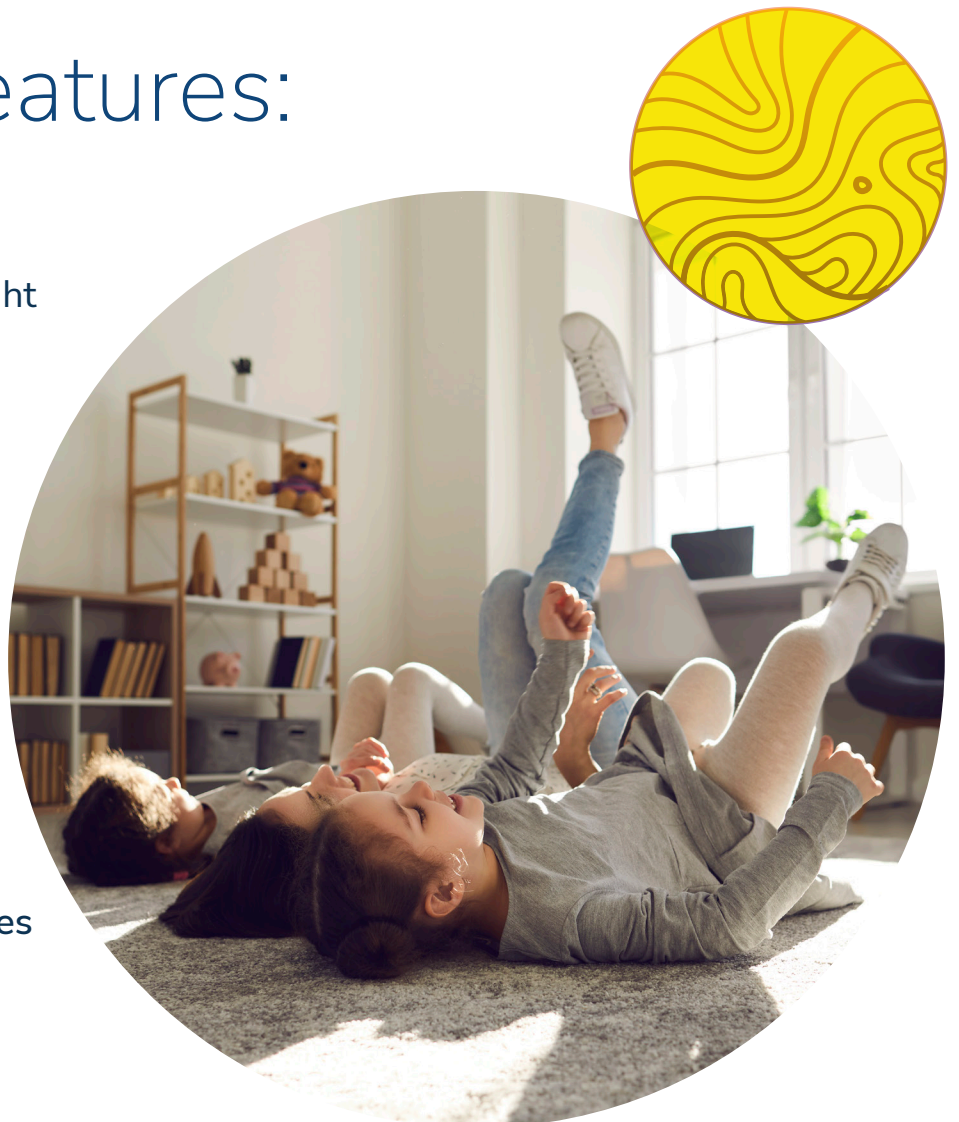
22 Storeys
With Good Ceiling Height

1BHK & 2BHK
Spacious Apartments

RERA Carpet Area:
Starting @ 375sqft

Prices start at
Rs 44.9 Lacs Onwards

Convenient EMI Schemes
& Loan Assistance





CHOOSE TO BE YOUR EXCITING BEST!

Seeking excitement is passé now. 'Living the excitement' is the new trend. Choose one abode for your family that's filled with excitement – within this wonderful edifice and in the vicinity – at Malwani, Malad (West). A pulsating location with all of the city's amenities at an arm's length.

Choose a never ending buzz that will keep your energy levels high always. Choose an existence that's infused with scintillating life. Choose from spacious 1BHK and 2BHK homes. Choose Onyx and be ready to 'jiyo life khul ke' at your own terms, at Apna Malwani, Apna Malad.



Clear Sea View from
Higher Floors



3 Elevators of Reputed Brands
- till the Terrace Floor



Earthquake & Wind
Resistant Design



RCC Frame
Structure



Dedicated Refuge Area
at 8th & 15th Floors

CHOOSE TO LIVE ONE
STRIDE BETTER



LIVING ROOM



KITCHEN

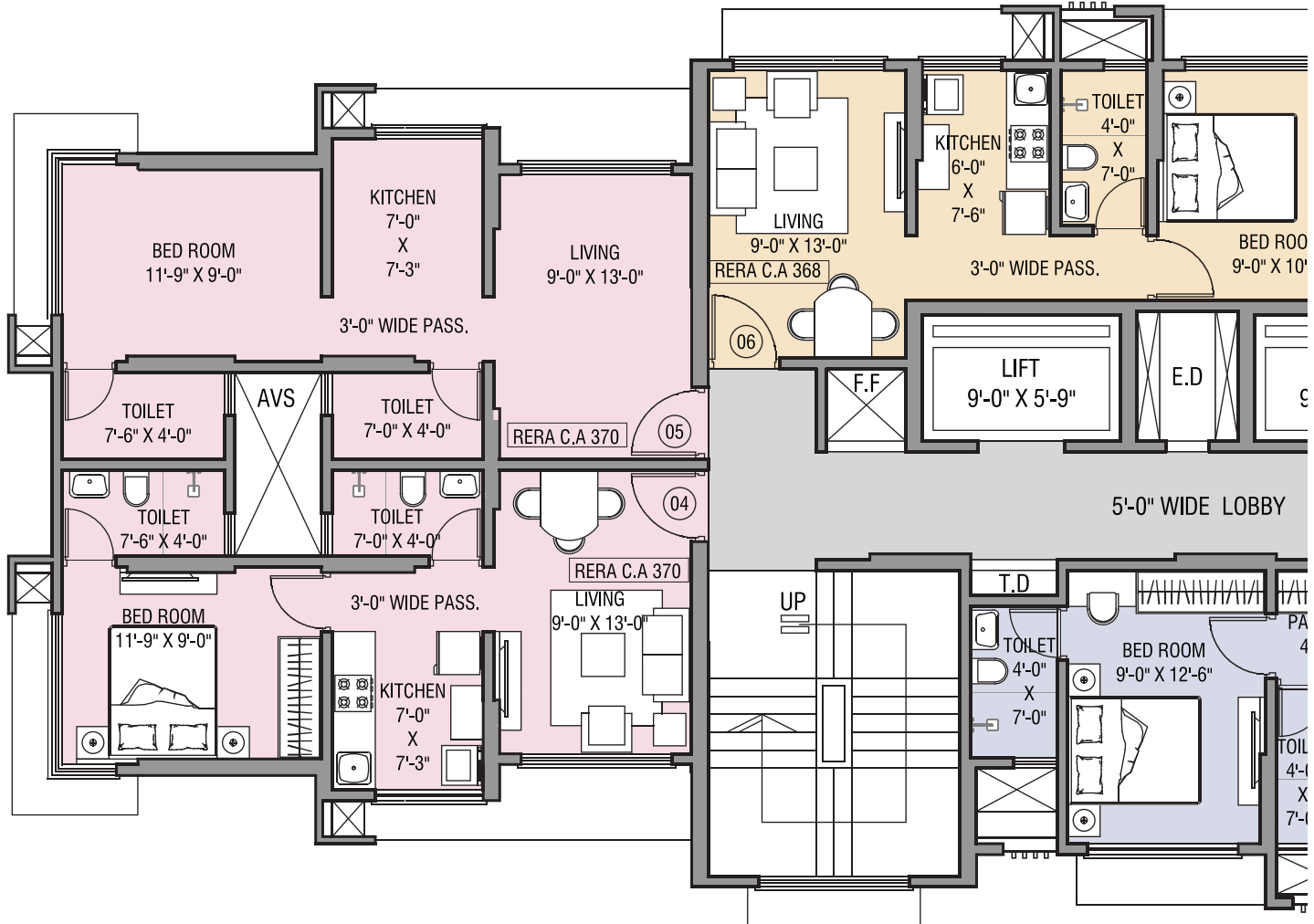


BEDROOM 1



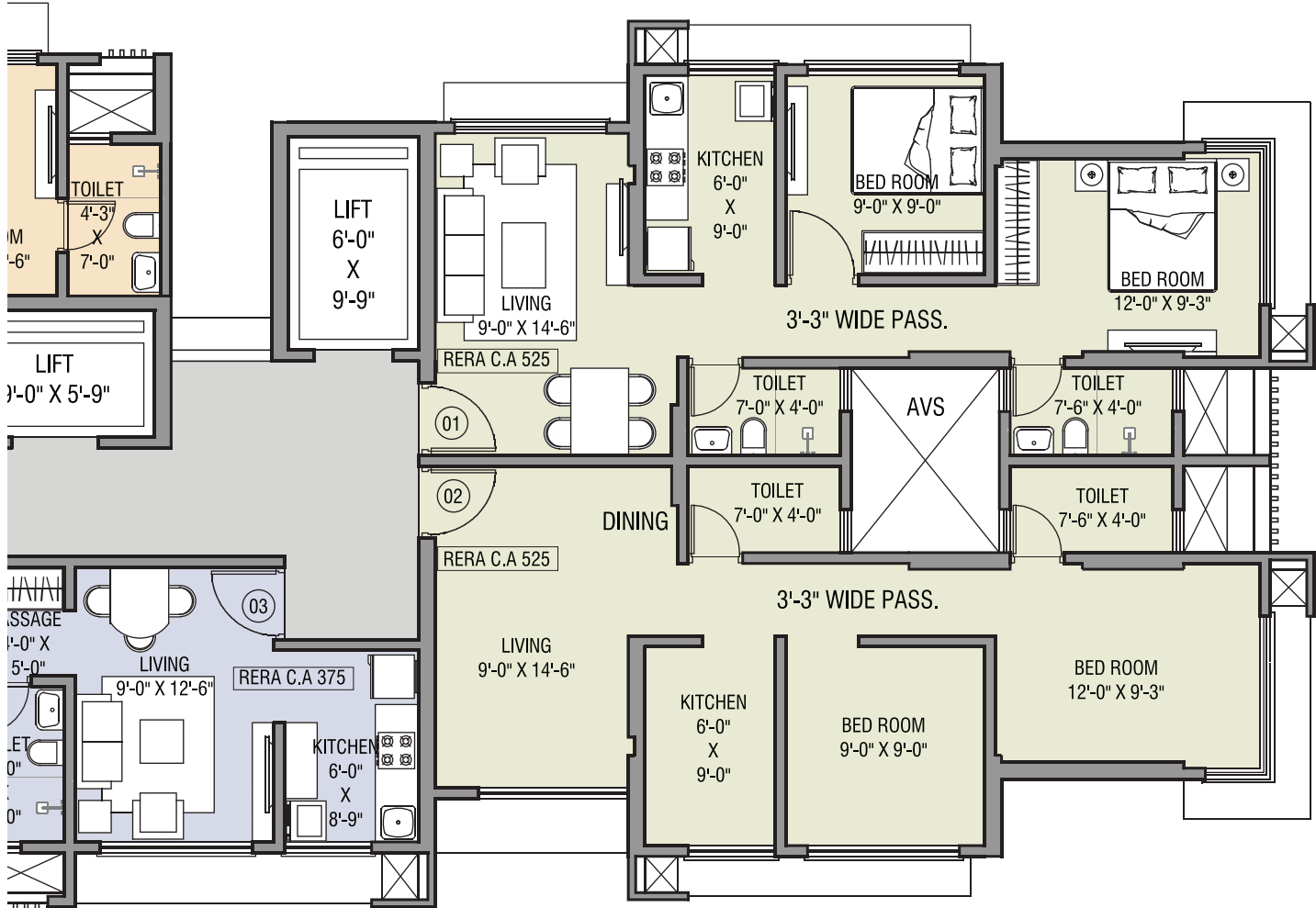
BEDROOM 2

CHOOSE WHAT'S BEST FOR YOUR FAMILY!

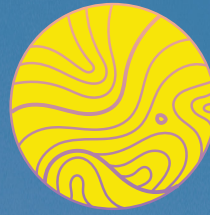


TYPICAL FLOOR PLAN

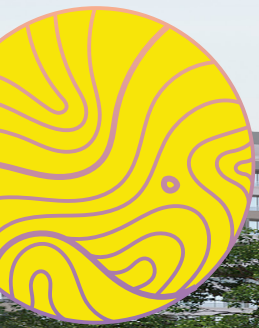
1:100 (2ND TO 7TH, 9TH TO 14TH & 16TH TO 22ND FLOOR)



Inside-Apartment Amenities



- Vitirified Tiles of Reputated Make
- Granite Kitchen Platform with SS Sink
- Dado Glaze Tiles up to Window Height
- Concealed Electrical Copper Wiring
- Decorative Modular Switches and MCB System
- Decorative Flush Main Door
- Telephone & Internet Points
- Pop Finish Internal Wall with Acrylic Emulsion Paint
- High-Quality Anodized Aluminum Sliding Windows



Typical 1BHK - Isometric View



Typical 2BHK - Isometric View



CHOOSE EXCITEMENT... WAY HIGH YET UNDER THE SKY

Terrace Amenities

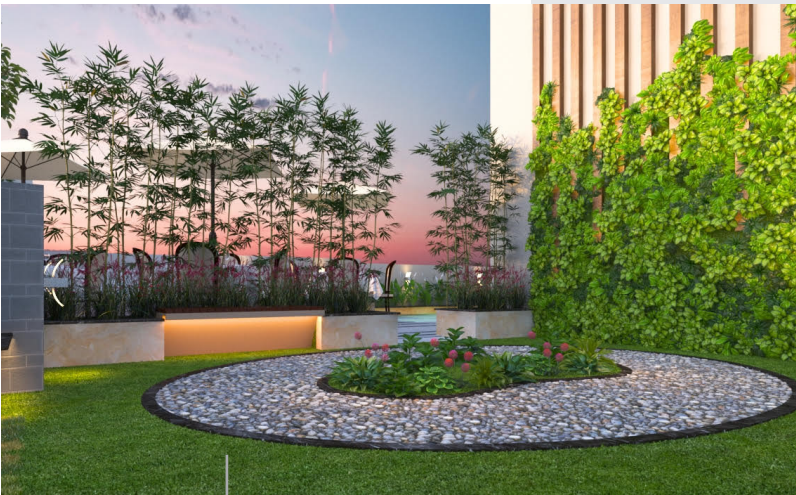
- Children’s Play Area
- Yoga, Meditation & Reflexology Park
- Sky Dining & Senior Citizen Area
- Fitness Center
- Stilt Parking Facilities
- Landscaped Area at Terrace



SKY DINING



Fitness Center



Reflexology



Landscaped Garden

Children's Play Area

