

TRULY A BLESSED LIFE





Where love blooms
Smiles radiate all around

Giggles, exclamations, joys
Adorn every note, every sound

Dreams scale the skies above
Hearts stay rooted to the ground

In this Utopia of bricks and mortar
My friend,
God's true blessing
You have finally found



1, 2, 2.5 & 3 BHK
APARTMENTS



G+19 STOREY
TOWER & 2 PODIUM



STRATEGICALLY
LOCATED

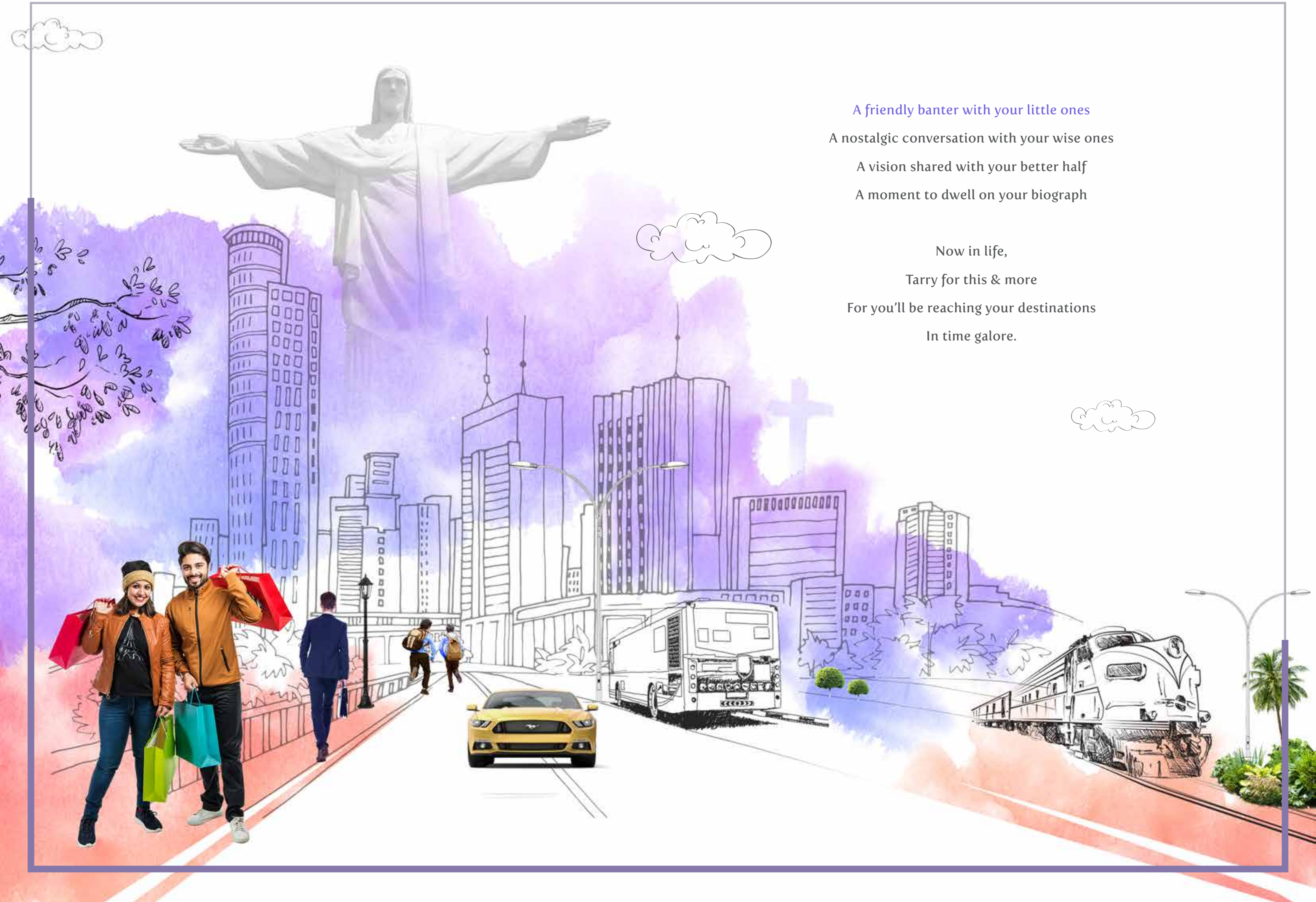


A tall, modern apartment building with a central tower and balconies, set against a vibrant, colorful sky with clouds and a church in the background.

A UTOPIA THAT TRULY DOES EXIST

Having successfully executed past projects in record time, JDN developers bring you Sharon Rose, yet another haven to reside in. Equipped with state-of-the-art facilities, expansive green areas, spacious interiors and close proximity to all establishments, this utopian abode is for those who seek a truly blessed life.

SHARON ROSE



A friendly banter with your little ones

A nostalgic conversation with your wise ones

A vision shared with your better half

A moment to dwell on your biography

Now in life,

Tarry for this & more

For you'll be reaching your destinations

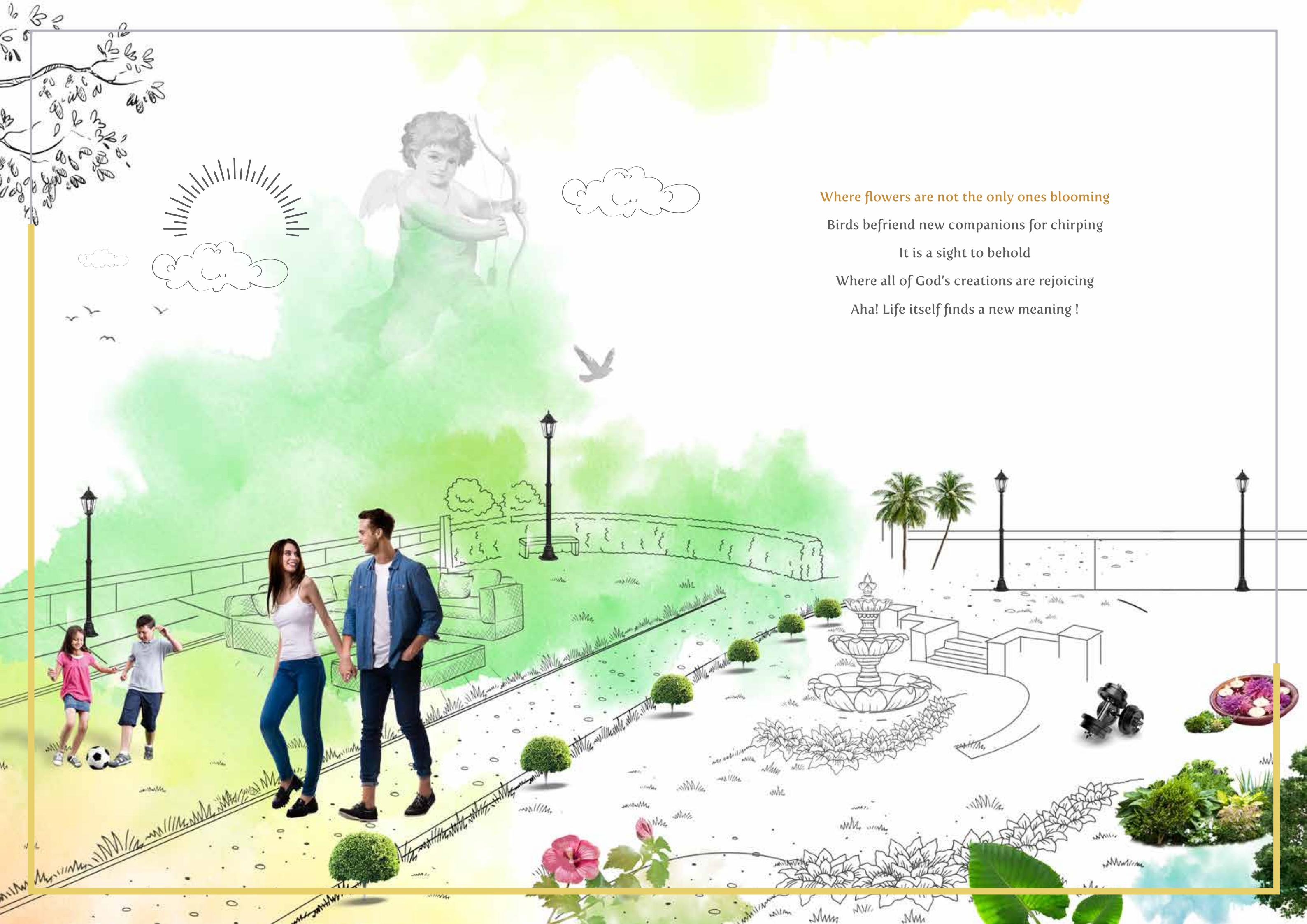
In time galore.



Nearby Locations

| | | | | | | |
|--|---|-----------------------------------|---------------------------|-----------------|---------------------------------|-----------|
| 1 Min. | 1 Min. | 1 Min. | 2 Mins. | 2 Mins. | 3 Mins. | |
| Neon Critical Care Children's Hospital | KPM Supermarket | Surana Hospital & Research Center | D'souza Market | Uncle's Kitchen | Our Lady Of Lourdes Church | |
| 3 Mins. | 3 Mins. | 3 Mins. | 5 Mins. | 6 Mins. | 6 Mins. | 7 Mins. |
| St. Joseph's School | St. Anne's High School & Junior College | Bassein Catholic Bank | Citizen Credit Co-op Bank | Pop Tate's | Mith Chowky Malad Metro Station | HDFC Bank |





Where flowers are not the only ones blooming

Birds befriend new companions for chirping

It is a sight to behold

Where all of God's creations are rejoicing

Aha! Life itself finds a new meaning!



**BLESSED WITH
NATURE'S ABUNDANCE**

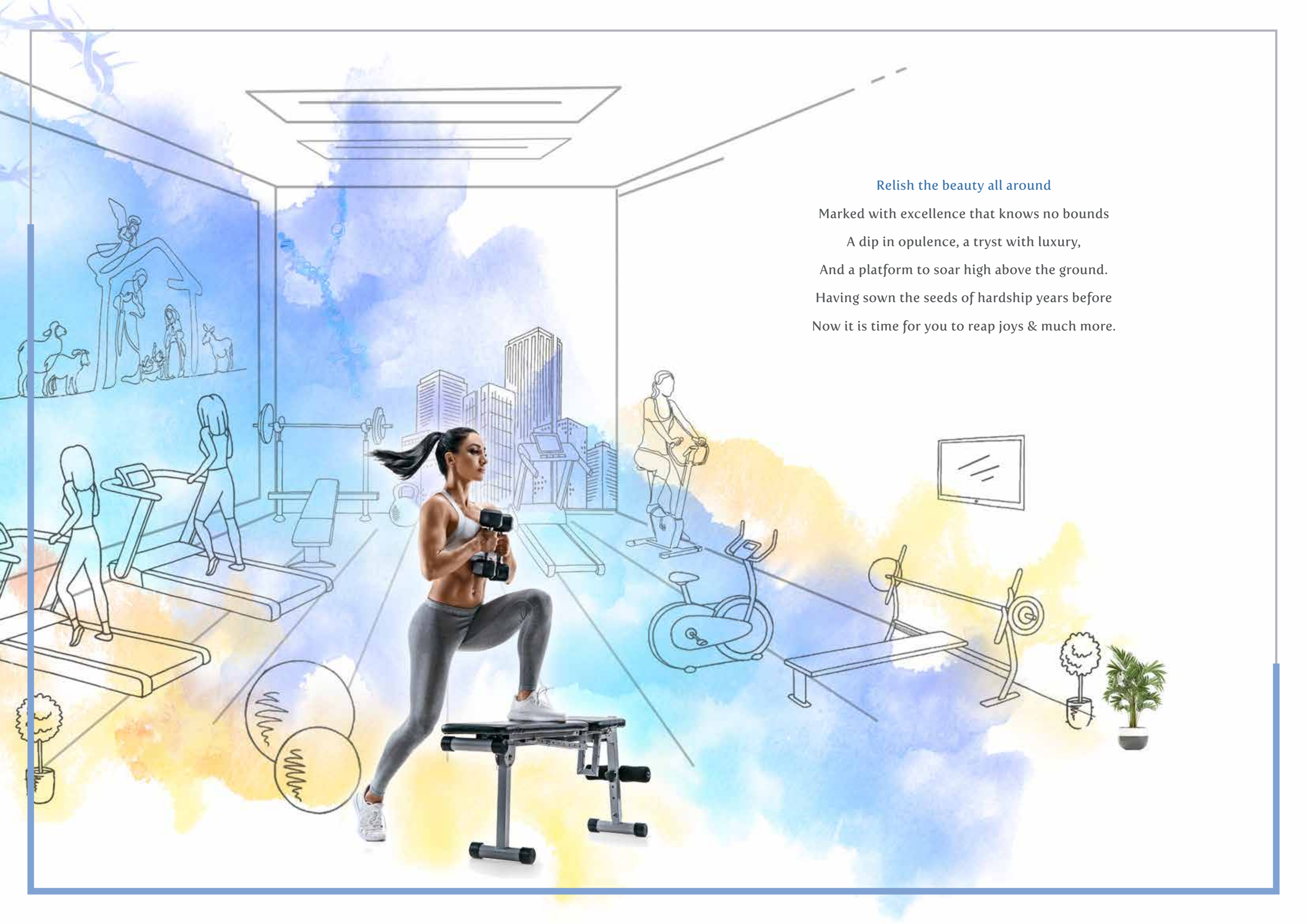
Expansive Green
Areas for Relaxation

Playing Area
for Children



Landscaped
Gardens

Yoga Deck



Relish the beauty all around

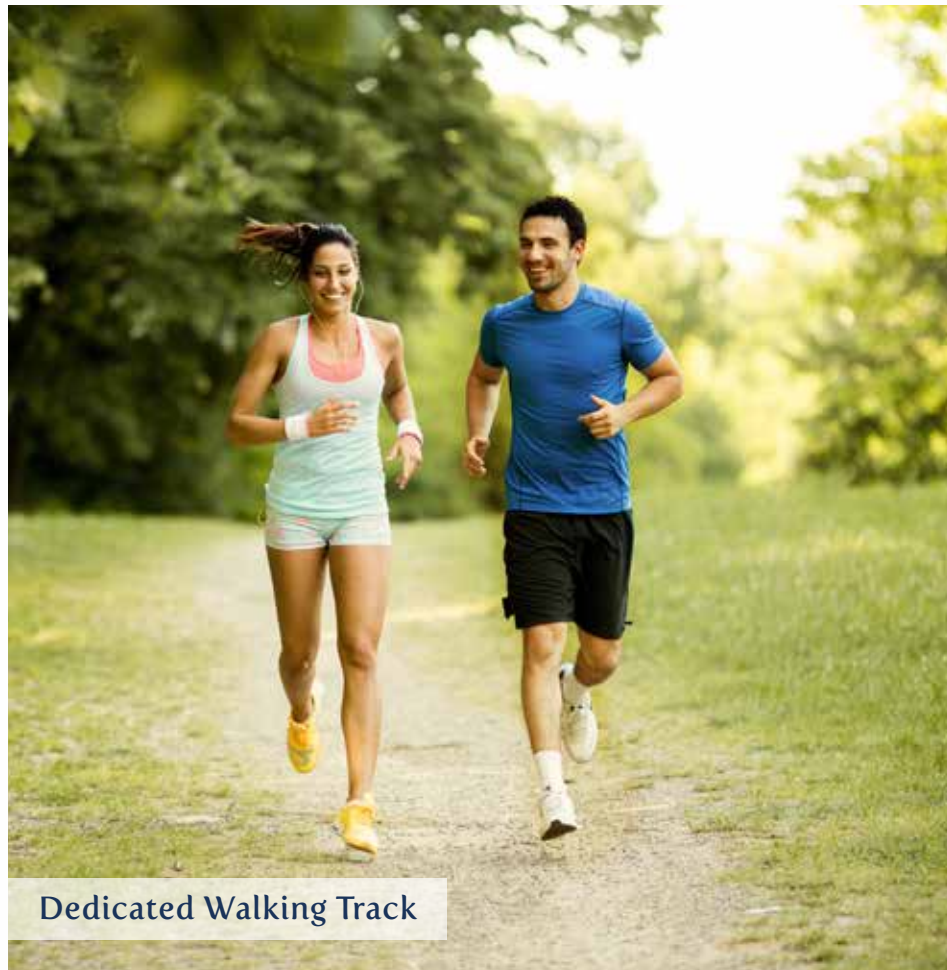
Marked with excellence that knows no bounds

A dip in opulence, a tryst with luxury,

And a platform to soar high above the ground.

Having sown the seeds of hardship years before

Now it is time for you to reap joys & much more.

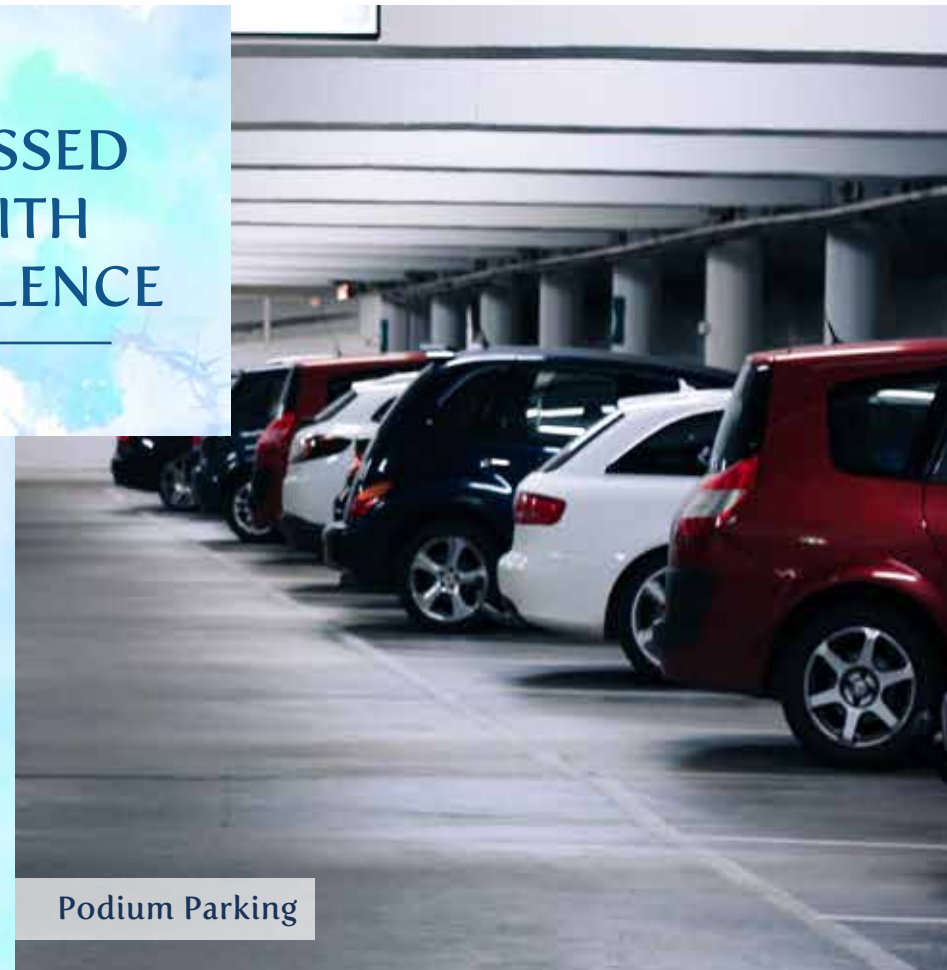


Dedicated Walking Track

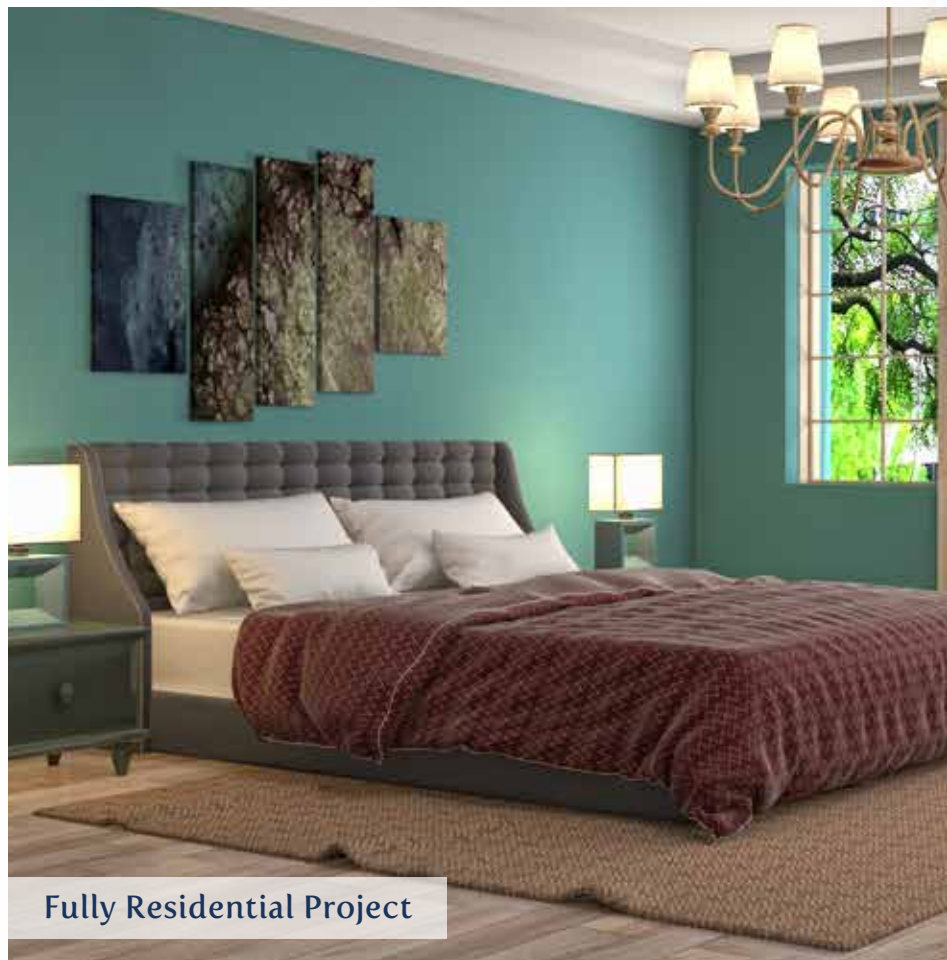


3 Elevators

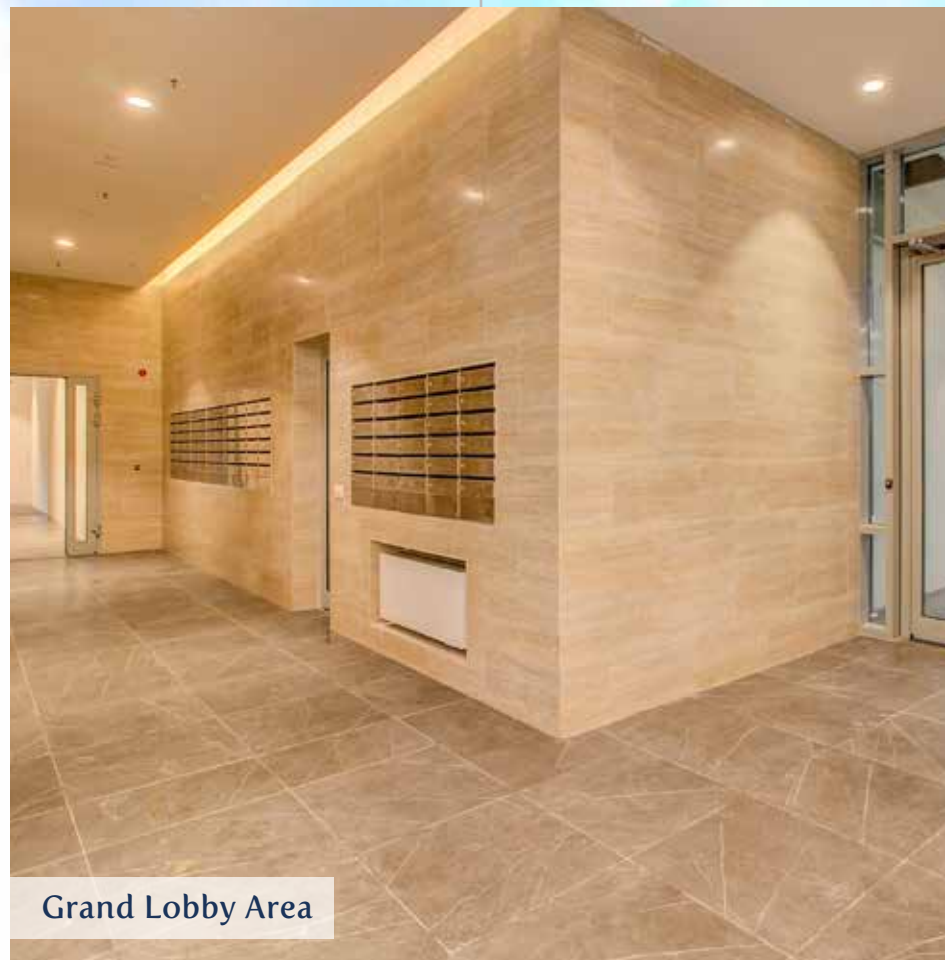
BLESSED
WITH
OPULENCE



Podium Parking



Fully Residential Project



Grand Lobby Area



Modern Fitness Centre



BLESSED WITH EXCELLENCE

SPECIFICATIONS



Certified Elevators



Earthquake-Resistance Structure



Vaastu-Compliant Design



Branded Finishing Products



FLOOR PLAN

Flat No. 1 | 3 BHK
909 Square Feet

Flat No. 2 | 2 BHK
744 Square Feet

Flat No. 3 | 1 BHK
460 Square Feet

Flat No. 4 | 2.5 BHK
756 Square Feet



PAST PROJECTS



Benvic Villa Orlem
Malad (W)



Linnet Apt Orlem
Malad (W)



Pereira Apt
Malad (W)



Matruchhaya
Kandivali (W)



Parkrose
Malad (W)



Raj Laxmi
Borivali (W)



Ladiwala Bhavan
Kandivali (W)

ONGOING PROJECTS



BLESSED WITH INTEGRITY

JDN DEVELOPERS

JDN Developers is a well-known name in the arena of redevelopment of housing properties in the suburbs of Mumbai.

Living up to the motto, “we build houses...create homes”, the JDN team of professionals constantly endeavours to bring the best standards in the industry to the customers within definite timelines and with occupation certificates.

At JDN, it is never just about the brick and mortar, the emotions of our customers are equally valued.

THE PROFESSIONAL TEAM

The professional team comprises

Mr. Sanjay Shah (Liasoning Architect),

Mr. Hiral Somaiya - Somaiya and Associates

(Drawing And Design Architect), Mr. Abhijit Phaterperkar

(RCC Consultant) and Mr. Anil Verma & Associates

(MEP Consultants).





NIGHT VIEW