

NINE REFLEX

OFF EASTERN EXPRESS HIGHWAY DADAR (EAST)

HOME
*Is Where
Your
STORY
Begins*

A PRESTIGIOUS PROJECT BY



Reflex Projects
LLP

The Project has been Registered under
Maha RERA No. P51900034207

WHY NINE REFLEX ?

HEALTH



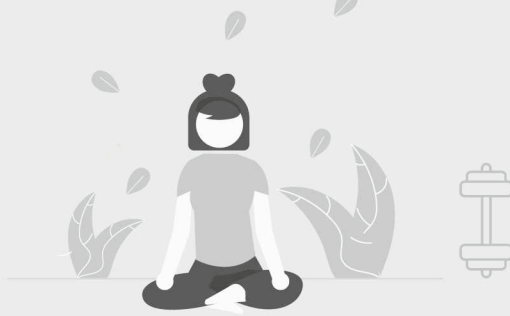
LIFESTYLE
Celebrate

Joy Of
OWNERSHIP



Celebrate Priviledge

Out of MUMBAI
Buyers Home



Young Entrepreneurs Dream

SINGLE FAMILY
SMART HOMES

BETTER
LIFE



OWN A HOME
IN MUMBAI



Single Family Multiple Homes



CELEBRATE HEALTH

Affordable Luxury

Excellent Connectivity



INVESTMENT

LIMITED EDITION

2BHK SMART HOMES

At Unbelievable Inaugural Value

Option For 3/4BHK Also Possible

HIGHLIGHTS OF THE PROJECT



Amongst The MOST PREFERRED Residential Location In Heart Of South Mumbai At Dadar East



EXCELLENT CONNECTIVITY To Eastern Express Highway, Hindmata Market Road, Dadar Railway Station, Naigaon Monorail, Metro, Central / Western / Harbour, Airport And Upcoming Nhava Sheva Sewri Sea Brigde etc.



Ultra MODERN ARCHITECTURAL DESIGN, Cross Ventilation And Unique Elevation.



HEALTHY & SMART LIFESTYLE Amenities Like Fitness Bay, Yoga Studio, Terrace Garden, CCTV Security, Air Conditioned Lobby, Smart Home Features etc



Well Planned SMART 2BHK With a Possible Combo Of 3 / 4 BHK



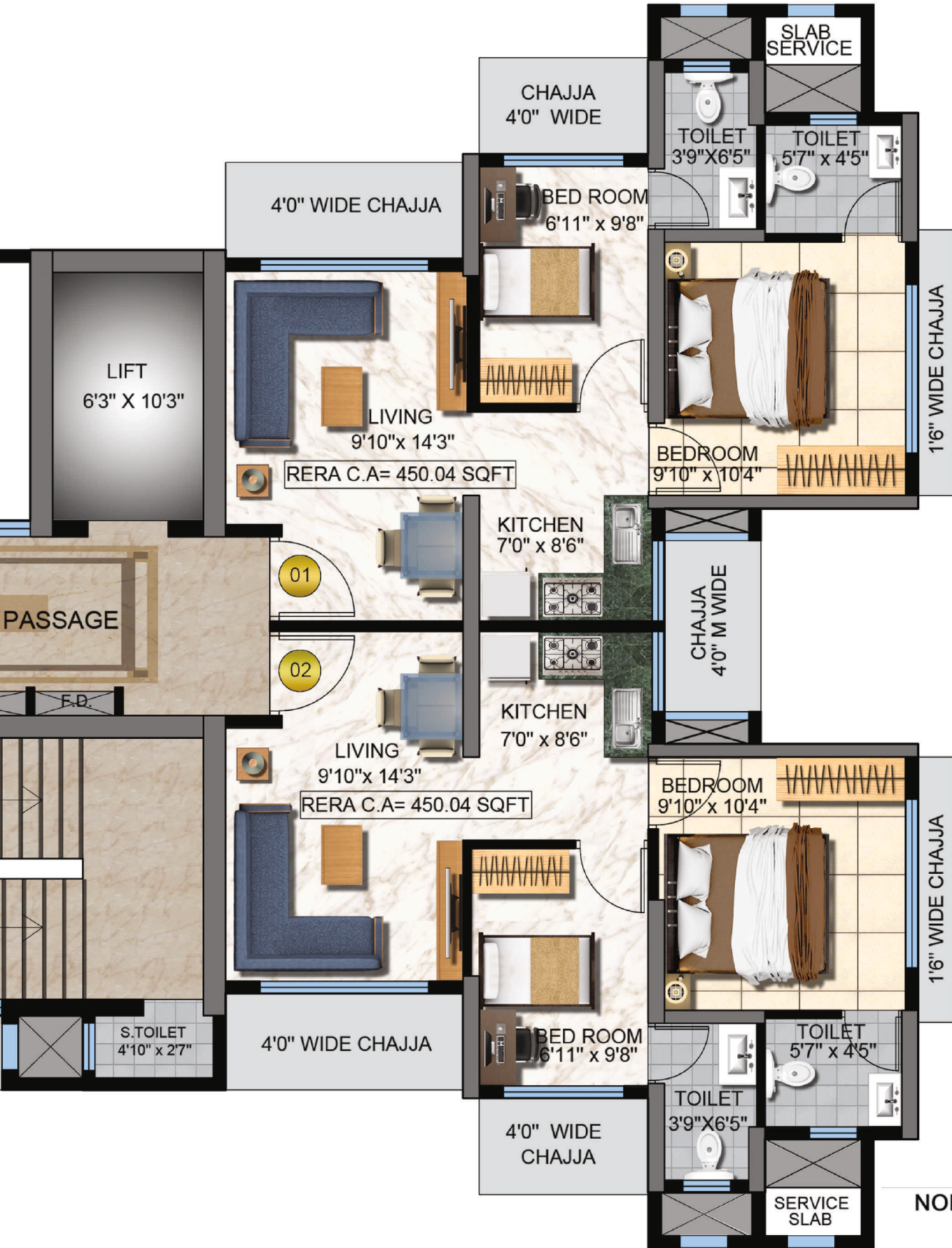
Separate CAR PARKING Tower Proposed



CENTRALLY LOCATED Yet Surrounded By Schools, Colleges, Malls, Hospitals, Recreational Areas, Temples etc.

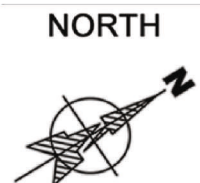


TYPICAL FLOOR PLAN



CITY VIEW

2BHK - APX 450 SQ. FT. RERA CARPET



INTERNAL AMENITIES



YOGA STUDIO



TERRACE GARDEN



FITNESS CENTER



DOCTOR ON CALL



FITNESS CENTRE



YOGA STUDIO



TERRACE GARDEN



DOCTOR ON CALL



CONVINIENT STORE



CAR PARKING TOWER



FIRE EMERGENCY SYSTEM



HD SECURITY CAMERAS