



KALPATARU®

DON'T WAIT FOR THE FUTURE.  
YOUR DREAMS ARE CLOSER.

LIVE EVERY MOMENT

NOW.



Representational Image



KALPATARU  
VIVANT

📍 JVLR

THOUGHTFULLY DESIGNED 1,2 & 3-BED RESIDENCES



Representational Image

In today's day and age we all strive for the perfect balance. Isn't it great when something comes along which mirrors your ideology?

Presenting Kalpataru Vivant. Located in JVLR, these residences put you at the heart of an area dotted with business and commerce hubs, industrial parks, world-class schools, hospitals, and countless other conveniences. With two major arterial roads, along with existing and upcoming metro lines, it provides the fastest access to home after a hard day's work.

Live life as it is meant to be lived. In the

**NOW.**

THE PRESENT AND THE FUTURE.  
FIND IT ALL IN ONE PLACE

NOW.

There are very few locations in the city that are so multi-faceted and impactful, that they transform the world around them. JVLR is one such location. Where corporate parks, arterial roads, modern conveniences, all exist in perfect harmony. To create a finely curated world wherein you can immerse yourself in all the present joys of life.



BUSINESS CENTRES AND COMMERCIAL HUBS.  
FIND IT ALL IN THE HERE AND

**NOW.**



VEERA DESAI  
INDUSTRIAL  
ESTATE  
**7.6 KM**

MIDC  
**4.1 KM**

LOTUS  
CORPORATE  
PARK  
**1.9 KM**

SOLITAIRE  
CORPORATE  
PARK  
**4.9 KM**

NESCO  
IT PARK  
**2.4 KM**

KALPATARU  
**VIVANT**

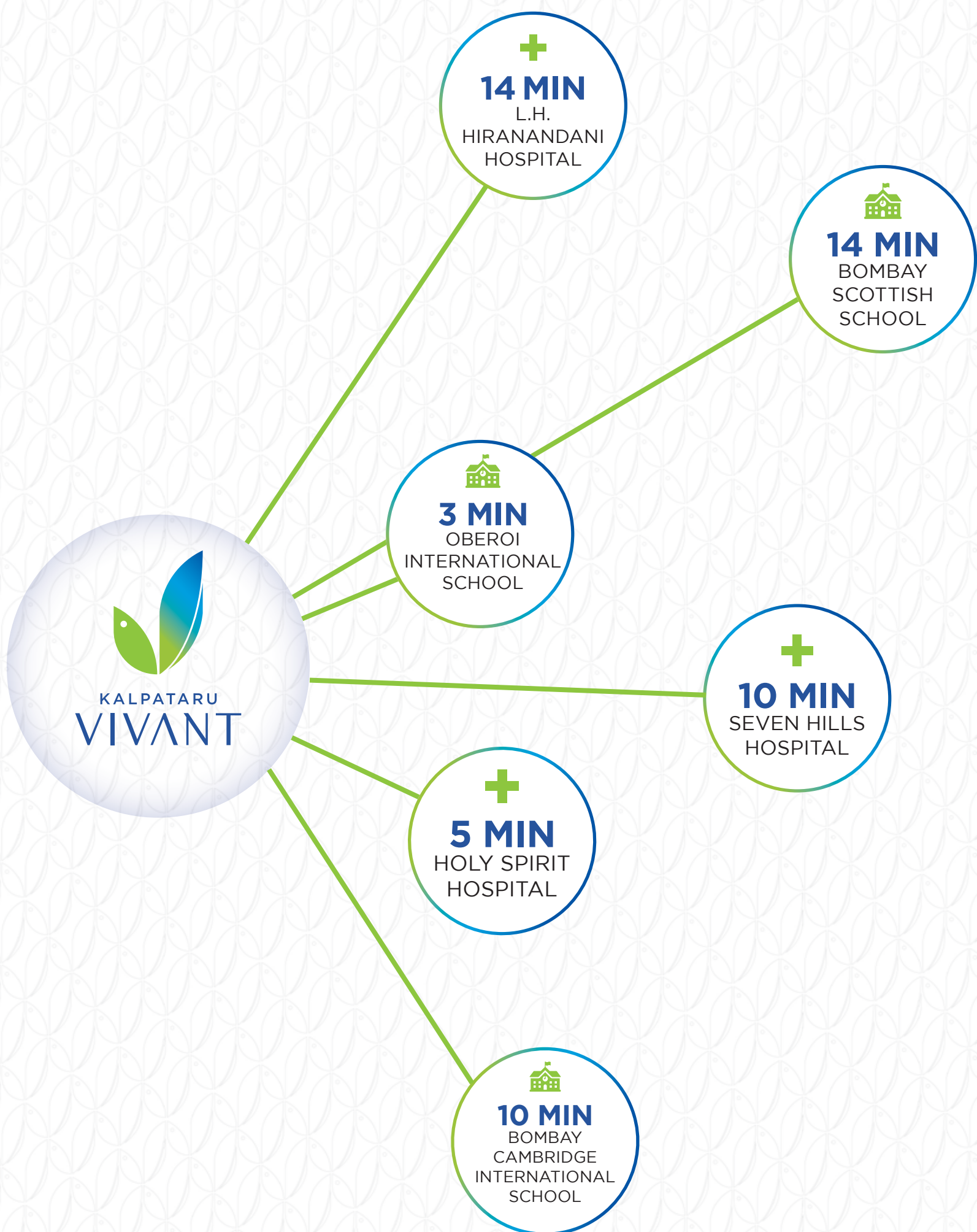
NIRLON  
KNOWLEDGE  
PARK  
**3 KM**

MINDSPACE  
**8.8 KM**

SEEPZ  
**2.7 KM**

BKC  
**12.7 KM**

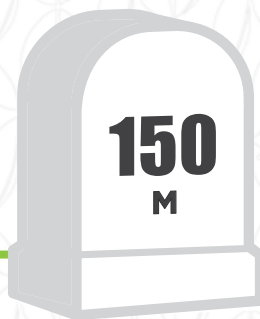
EDUCATIONAL HUBS AND WORLD-CLASS HEALTHCARE  
IN CLOSE VICINITY.  
THAT'S THE CONVENIENCE OF LIVING IN THE  
**NOW.**



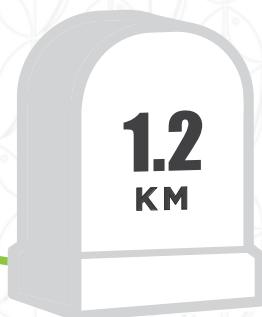
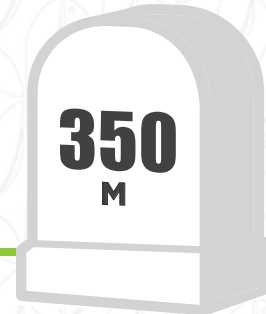
\*Time taken on Google map as on 1<sup>st</sup> May 2022, 06:00 AM

THE SEAMLESSNESS THAT EVERYONE DESIRES,  
IS COMING TO YOUR DOORSTEP

NOW.

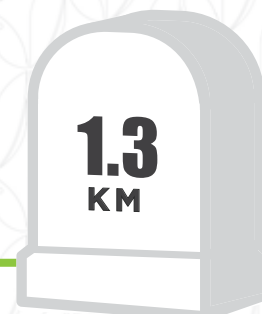


Upcoming Shyam Nagar metro station on Line 6



Western Express Highway (WEH)

Upcoming metro station JVLR on Line 7



Domestic Airport

INFRASTRUCTURE. GROWTH. APPRECIATION.  
DISCOVER A WORLD OF REASONS TO INVEST

NOW.

Representational Image

Today JVLR is at the cusp of a revolutionary growth with a host of infrastructure developments lined up that will transform the area forever.



### **MULTI-NODAL INTERSECTION**

Located strategically at the intersection of upcoming metro line 6 & 7 further enhancing connectivity



### **VALUE APPRECIATION**

The areas connecting metro line 1 witnessed a 10-20%\* appreciation. A similar potential awaits at JVLR



### **UPCOMING OFFICE SPACES**

Enhanced metro connectivity will lead to new office spaces in the SEEPZ-Powai belt



### **PLANNED WIDENING OF JVLR**

BMC plans to widen# the JVLR to ease the load and enhance smoother traffic movement

WORK. LIFE. NATURE.  
THE TIME TO BRING IT ALL TOGETHER IS

NOW.

Development of 6.2 acres to explore. Imaginative layouts and intelligent configurations to choose from. Soulful designs and seamless comfort. No, this is not some dream for the future. This is your life in the present. The residences at Kalpataru Vivant are primed for your presence. Just come and make yourself at home.





HAVING IT ALL IS GOOD.  
IT'S EVEN BETTER, WHEN YOU HAVE IT

NOW.

The lifestyle you aspire to live isn't a distant dream. It is in the here and now where all your wishes and desires will come true. Live amidst a galaxy of world-class amenities, abundance and comfort. Make more of your time together. Experience life in the now.



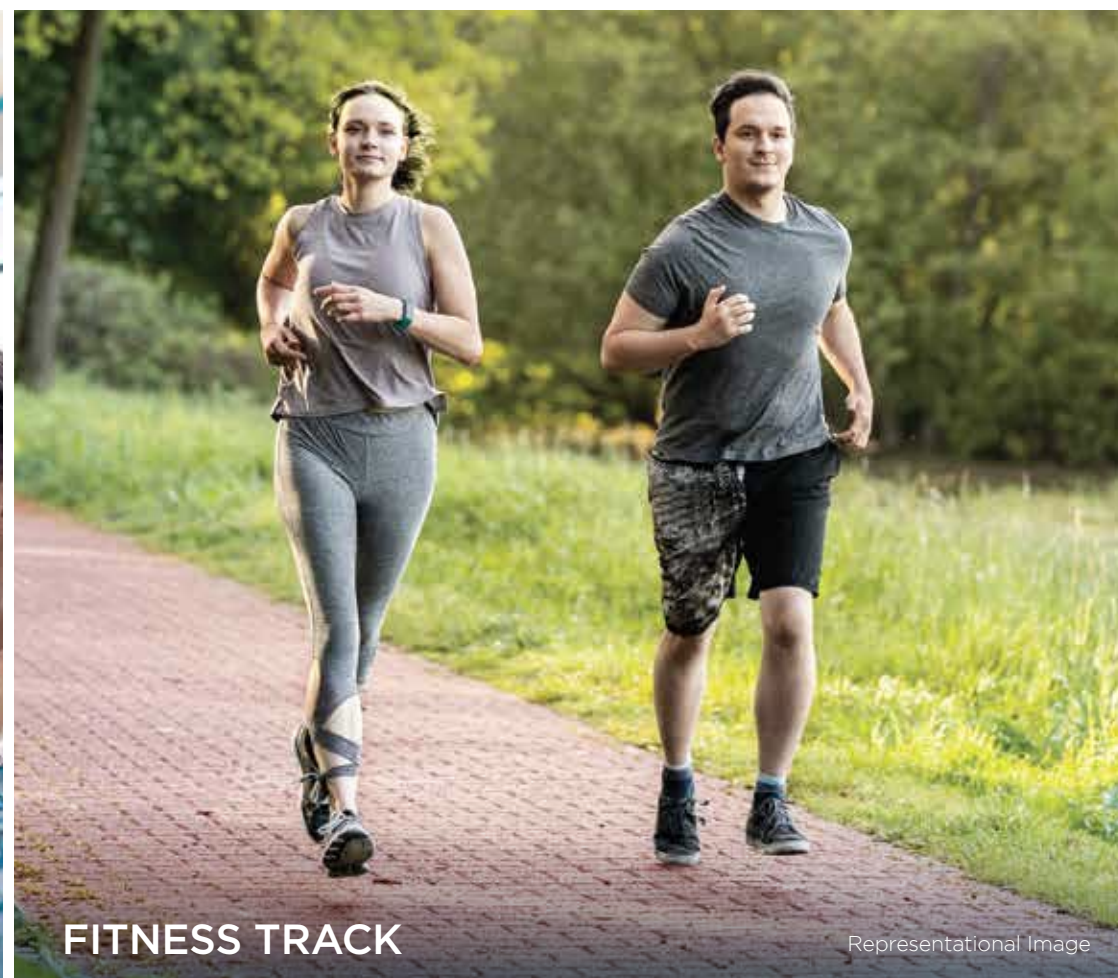
YOGA / FITNESS CENTRE

Representational Image



SWIMMING POOL

Representational Image



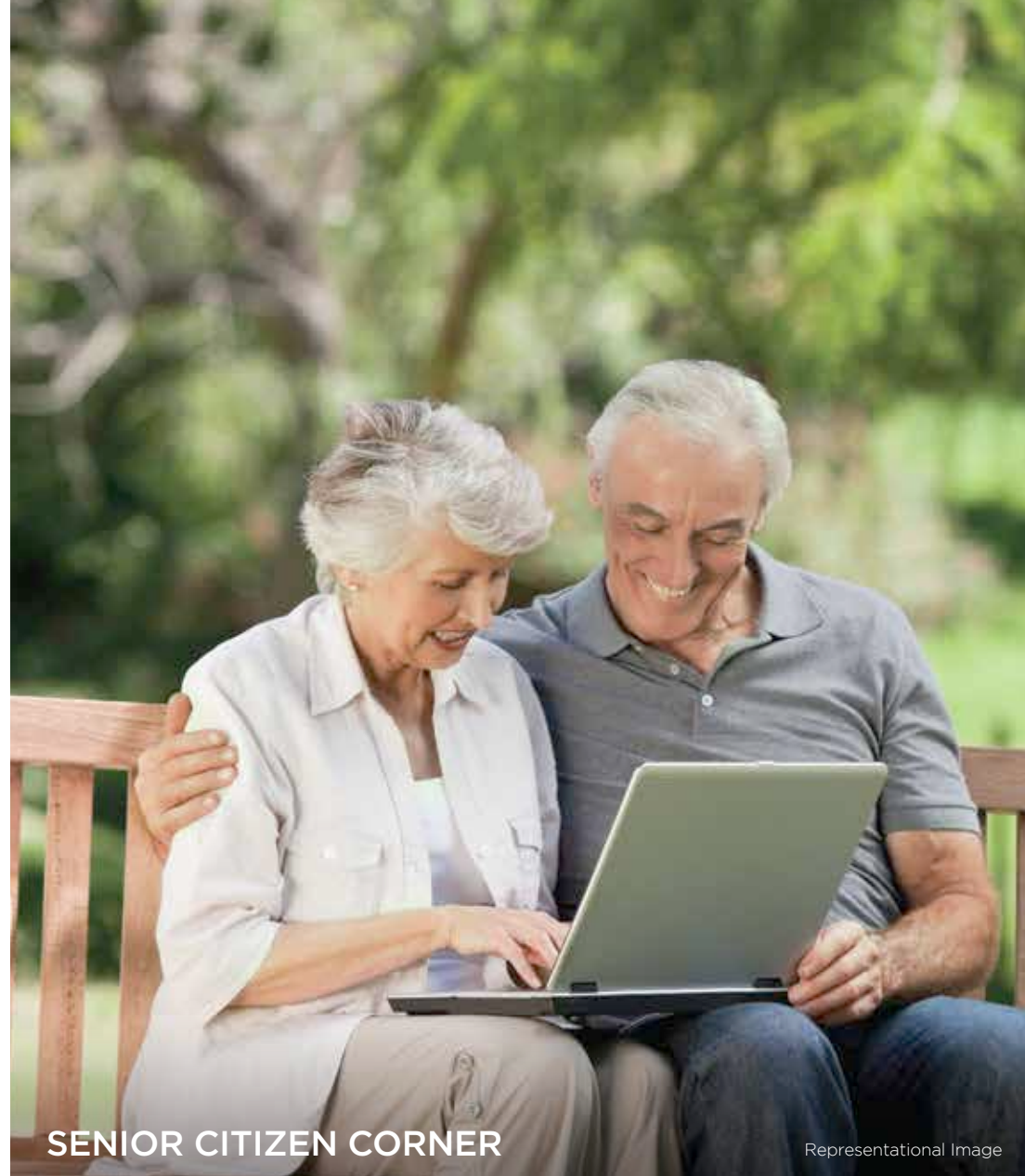
FITNESS TRACK

Representational Image



CHILDREN'S PLAY AREA

Representational Image



SENIOR CITIZEN CORNER

Representational Image



PET PARK

Representational Image



GYMNASIUM

Representational Image

Indoor Games | Mini Theatre | Business Centre | Net Cricket  
Pitch | Barbeque Area | Kids Pool | Pool Deck |  
Multipurpose Play Court | Landscape Garden | Gymnasium |  
Multipurpose Hall | Party Hall



FOR US, EVERY DAY IS  
AN OPPORTUNITY TO CREATE  
SOMETHING NEW.

Established in 1969 and with a strong presence in Mumbai, Thane and Pune, over the last 50 years, Kalpataru has built residential, commercial and retail projects that are today a testimony for impeccable architectural standards. Fulfilling the aspirations of numerous home buyers and ensuring the timely delivery of their dream homes, Kalpataru has become synonymous with trust and quality construction.

OVER  
**50** YEARS OF  
BUILDING  
TRUST

MORE  
THAN  
**105** LANDMARK  
PROJECTS  
& STILL  
GROWING

OVER  
**21** LAKH SQ.MT.  
OF AREA  
DEVELOPED

MORE THAN  
**18,000**  
HAPPY FAMILIES



Kalpataru Vivant is registered bearing MahaRERA reg. no. P51800045360 (South - Wing A), P51800034531 (South - Wing B) & P51800045409 (North - Wing B)

Site address: Kalpataru Vivant, Jogeshwari-Vikhroli Link Road, Andheri (E), Mumbai - 400060. Head office: 101, Kalpataru Synergy, Opp. Grand Hyatt, Santacruz (E), Mumbai - 400 055. Tel.: 022 3064 3065 | Email: sales@kalpataru.com | Website: www.kalpataru.com

Disclosure: All specifications, images, plans, designs, facilities, amenities, dimensions, elevations or any other information contained herein are in respect of the project Kalpataru Vivant is registered bearing MahaRERA reg. no. P51800045360 (South - Wing A), P51800034531 (South - Wing B) & P51800045409 (North - Wing B). The same may be subject to changes/ revisions/ alterations in terms of approvals, orders, directions and/or regulations of the concerned/relevant authorities, and/or for compliance with laws/regulations in force from time to time. In view of the above, and in line with our customer policies, we may change/alter the above in consonance with approvals, orders, directions, applicable laws, regulations, etc. Unless otherwise stated, all the images, visuals, materials and information contained herein are purely creative/artistic concepts and may not be actual representations of the product and/or any amenities. Features, fixtures, fittings, goods, accessories, furniture and any other information reflected/displayed in the images are strictly for illustrative and representational purposes only and are not part of the standard final amenities & finishes. None of the above may be construed to form any basis of, or serve as an inducement or invitation for payment of any advance and/or deposit, to be made by a prospective customer, under relevant provisions of law or otherwise. Solely the amenities/ specifications, features mentioned in the agreement for sale (if any) shall be final. (Refer: <https://maharera.mahaonline.gov.in/>).

For private circulation only. This property is secured with IDBI Trusteeship Services Limited. The No Objection Certificate/ Permission would be issued, at the relevant time, if required. Conditions apply.