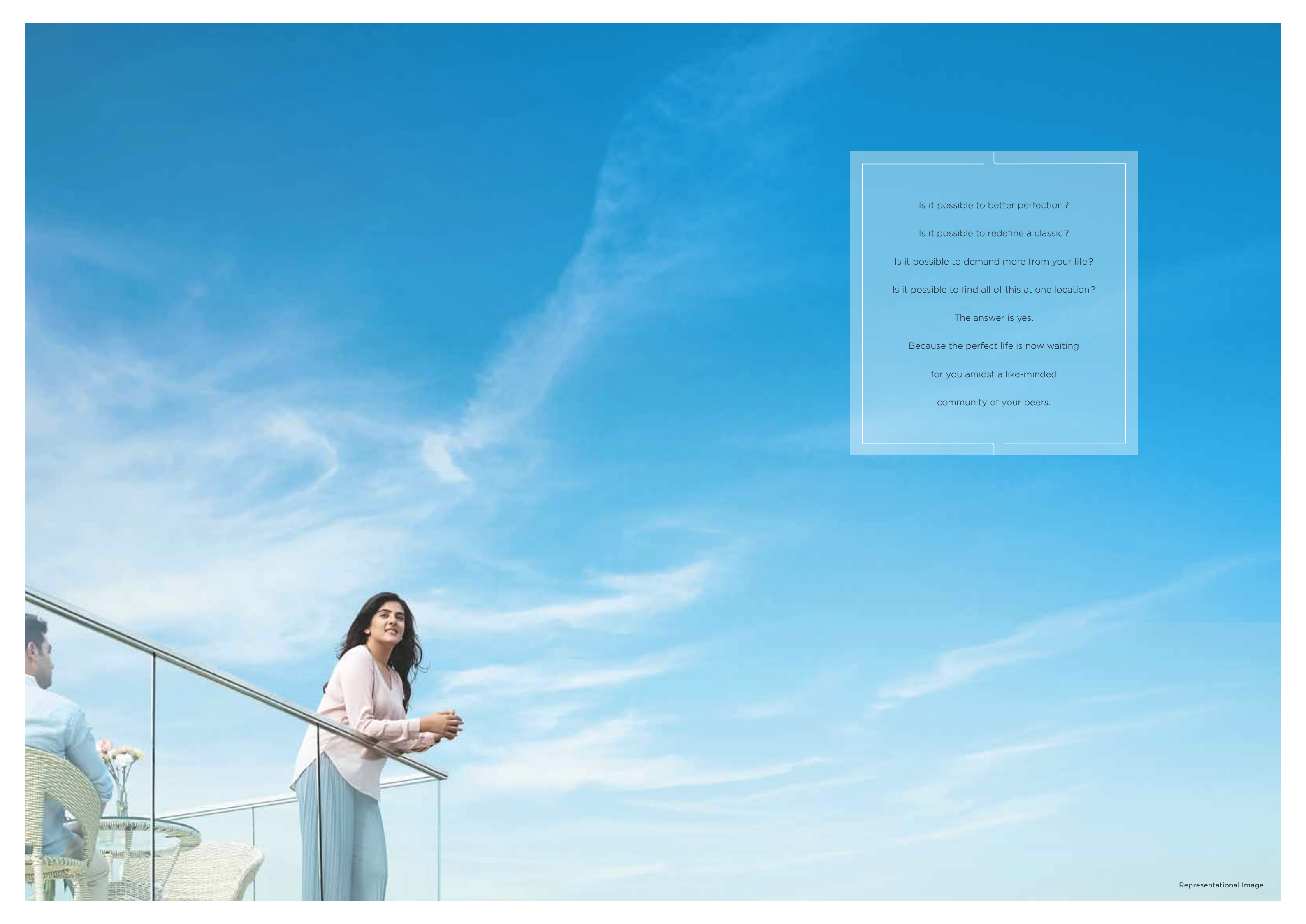




SRISHTI  

---

NAMAAN



Is it possible to better perfection?

Is it possible to redefine a classic?

Is it possible to demand more from your life?

Is it possible to find all of this at one location?

The answer is yes.

Because the perfect life is now waiting

for you amidst a like-minded

community of your peers.

**PERFECTION.  
IN ITS LATEST AVATAR.**

At Srishti, our ideology has always been  
to keep striving for excellence.

Since 1985, we've set out to create a model  
community that was fully equipped with social  
infrastructure, modern apartments, and most  
importantly a vibrant neighbourhood. Today, this  
community has blossomed into a landmark.



# INDEX

SRISHTI NAMA AH

LOCATION

AMENITIES

COMMERCIAL

COMMUNITY

PHASE DETAILS

HIGHLIGHTS

SUSTAINABILITY

TPOLOGY

LEGACY

DESIGN



## WELCOME

to Srishti Namaah. The next level of perfection in this iconic township. Spread across 9 acres, this beautiful piece of land has been utilized in a truly thoughtful way. Here, every nook and corner has been crafted efficiently. So when you're strolling through the property, you will be pleasantly surprised by pockets of greens and thoughtful amenities seamlessly integrated with the surroundings.



All Projects herein which are being offered for sale or advertised or inviting person to make an offer in any manner whatsoever are registered with MahaRERA in compliance with the provision of RERA Act and in no manner the same shall be deemed to be for the building(s)/development which are not registered with MahaRERA.

	GROCERY SHOPPING		ISKON TEMPLE
	CINEMA		AMUSEMENT PARK
	LIFESTYLE SHOPPING		METRO STATION
	HOSPITAL		JUNCTION
	RAILWAY STATION		PROPOSED FLYOVER
	BANK		METRO LINE
	SCHOOL/ COLLEGE		



**SRISHTI NAMAHAH**

TO VIRAR

TO BORIVALI



**THE PURSUIT OF  
PERFECTION IS NEVER ENDING.**

Welcome to a place where connectivity and  
seamlessness are facts of everyday life.

A place which gives you seclusion from the  
hustle and bustle of the modern world, and yet  
keeps all of it at your feet. So forget about  
spending too much time on travel. Here, you  
will always have the time for togetherness.

Time for yourself. Time to grow.

**HOW DID WE ENSURE  
BETTER CONNECTIVITY?**

**SIMPLE, 3 METRO LINES  
AT YOUR DOORSTEP INSTEAD OF 1.**

The seamlessness that Srishti offers its residents is set to get even better with 3 new metro lines (Line 2A, Line 7 and Line 9) coming up in the area. Along with that, roads, railway stations and even coastal transport networks are all here. Combine this unparalleled convenience with the presence of commerce hubs like Mindspace and TCS only a short drive away, and you finally have a work-life balance that you've been seeking all your life.





**SPEND LESS TIME TRAVELING TO WORK  
AND MORE TIME WITH YOUR LOVED ONES.**

Home to countless industries, IT companies and transport hubs, the Mira Bhayander area is also a residential hub due to its multi-faceted benefits. With the new metro coming up, property values are soaring here. And with the proposed Borivali-Thane Tunnel Road in the works, your commute time towards Thane will be reduced by half. All the more reason to make this amazing location, your future home.





Representational Image

## THOUSANDS OF SMILES FUEL OUR CONSTANT NEED FOR PERFECTION.

Another welcome addition to the growing Srishti family is Srishti Namaah - a world wherein families can live, love and celebrate together. This is a community of like-minded individuals who have together found an environment that provides the perfect setting for a fulfilling life. The joys of living here, come through in the honest testimonies of our residents.

“ Srishti has spacious flats and a friendly environment. Each sector has a playground with multiple sports activities and events held all year. Medical emergency? There are 24/7 medical stores and the Bbaktivedanta Hospital at just a minute's walk. Want to grab a quick bite? Varied fast food shops and cafes rated 4 stars and above are just around the corner. At Srishti all the occasions and festivals are celebrated with much fanfare. ”

- Pavan Panchal

“ The best thing about Srishti is definitely its people and the environment. It is a stimulating one, prompting growth and development within the residents. ”

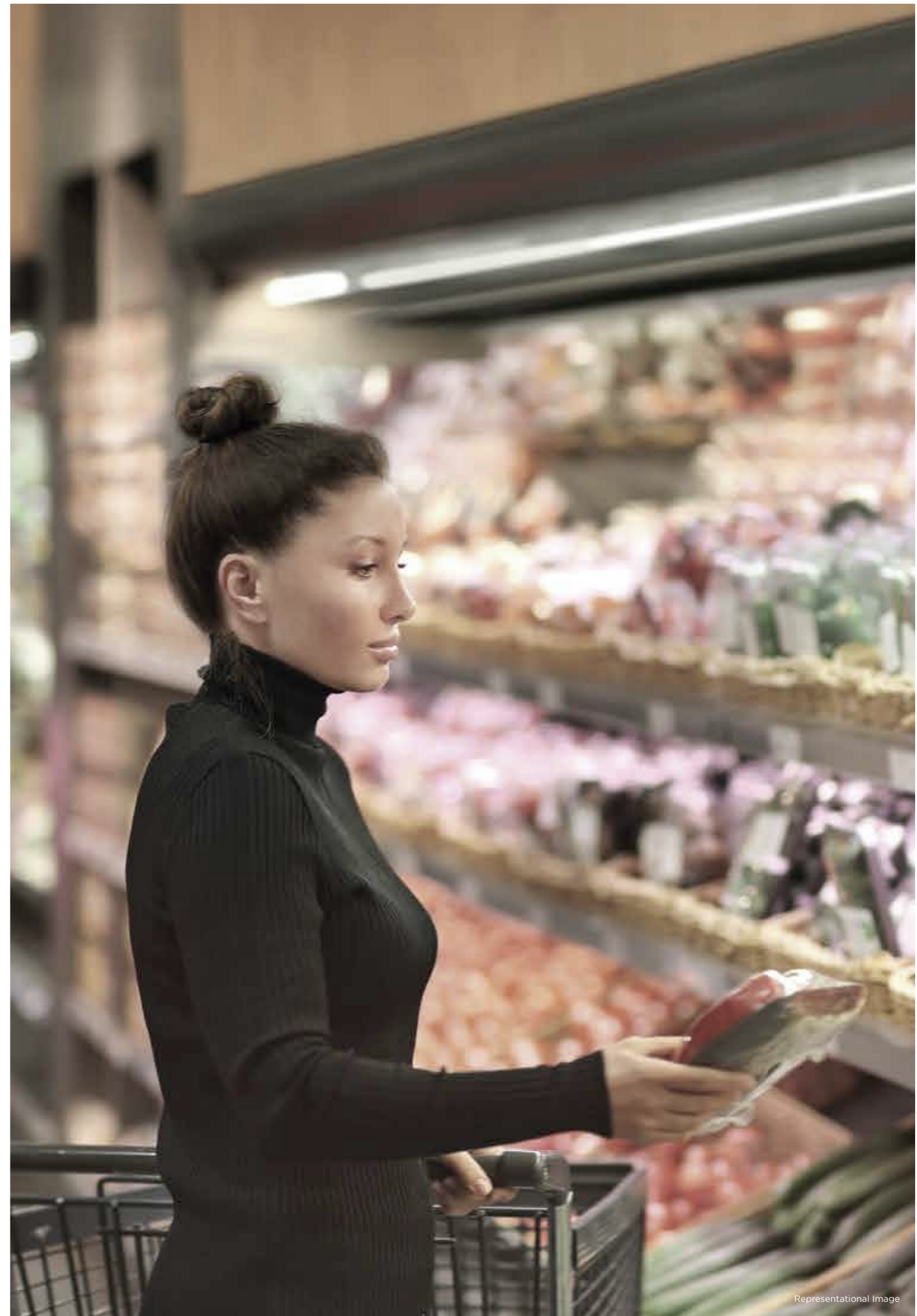
- Aditya Nambiar

“ Every room is big and airy throughout the day. The layout of the flat, be it the provision of two washrooms or the utility area, makes it super-efficient for bigger families. There is also ample space between buildings, making Srishti non-intrusive. For nature lovers, there is at least one garden area around every building and for the sporty kind there is a ground with a gym area and multiple playing courts. Last but not the least, the joy of living here is in its people and its ever-stimulating environment. ”

- Ritika Das

**PERFECTION.  
NOT JUST WITHIN YOUR HOME.  
BUT AROUND YOU TOO.**

Residences alone don't make a community. It's all the conveniences and comforts coming together that makes the living experience complete. Conveniences like hospitals, supermarkets, schools and places of worship. You will discover all of that around Srishti Namaah. All within the comforts of your thriving community.



## CONNECTIVITY AND CONVENIENCE REDEFINED

### ROAD NETWORK

- Western Express Highway - **1.4 kms**
- Poonam Sagar Road - **1.5 kms**
- Mira Bhayandar Road - **1.7 kms**
- Dahisar Check Naka - **1.9 kms**
- Kashimira Junction - **3.0 kms**
- Close proximity to Ghodbunder Road
- Close proximity to Link Road from Dahisar

### RAILWAY NETWORK

- Mira Road Station - **1.8 kms**
- Churchgate to Virar trains
- Separate trains from Bhayandar to Andheri and Bhayandar to Churchgate
- **Metro Line 2A & 7**

### PROPOSED INFRASTRUCTURE

- Dahisar (E) to Mira Bhayandar - **Metro Line 9**
- Pandurangwadi Metro Station - **0.9 km**
- Kashigaon Metro Station - **1.8 kms**
- long Coastal Road (Thane to Mira Bhayandar) - **4 kms**
- **3 Flyovers** on Mira Bhayandar Road
- Expansion of Gorai-Bhayandar Road to **4 lanes**
- Extension of Link Road from Dahisar up to Bhayandar **29.2 kms** Long
- **8 lane** Coastal Road (Marine Lines to Kandivali)
- Borivali-Thane Tunnel Road

### WITHIN A RANGE OF 30 MINS

- Tata Consultancy Services (Borivali E)
- JP Morgan Chase (Malad W)
- Accenture (Malad E)
- Deloitte (Goregaon W)

### SECONDARY BUSINESS DISTRICTS (SBDs)

- Mindspace, Malad (W) - **14 kms**
- MIDC, Andheri (E) - **20 kms**
- Powai - **22 kms**

### PLACE OF WORSHIP

- Iskcon Temple - **0.4 kms**

### HOSPITALS

- Bhaktivedanta Hospital - **0.09 kms**
- Global Hospital - **2.2 kms**
- Wockhardt Hospital - **2.4 kms**

### SCHOOLS/COLLEGES

- N L Dalmia School - **0.2 kms**
- N L Dalmia Management College - **0.2 kms**
- Royal College - **0.2 kms**
- The Don Bosco High School - **1.6 kms**
- Singapore International School - **2.6 kms**
- GCC International School - **2.8 kms**
- RBK Global School - **5.2 kms**

### SHOPPING


- Thakur Mall - **1.8 kms**
- D'Mart - **2.0 kms**
- Brand Factory - **2.9 kms**
- Star Bazaar - **2.9 kms**
- Maxus Mall - **5.3 kms**

### BANKS

- Punjab National Bank - **0.4 kms**
- ICICI Bank - **0.6 kms**
- HDFC Bank - **0.8 kms**
- Syndicate Bank - **0.9 kms**
- Vijaya Bank - **1.1 kms**
- Axis Bank - **1.2 kms**
- Allahabad Bank - **1.2 kms**
- Dena Bank - **1.2 kms**

### LEISURE

- GCC Hotel & Club - **2.1 kms**
- Vardhman Fantasy Park - **2.5 kms**
- Sanjay Gandhi National Park - **5.7 kms**
- Uttan Beach - **13.7 kms**
- Gorai Beach - **17.5 kms**



**OUR BEAUTIFUL  
RECEPTION AREAS. A CONSTANT  
EVOLUTION IN PERFECTION**

It's not just the lavish, spacious homes, or the plentiful premium amenities. It's not just the superior lifestyle or the community experience on offer. Perfection at Srishti Namaah reflects in every possible detail. Like the air-conditioned, double height lobbies that have been designed so well, that your guests would be forgiven for wanting to spend a little longer there.

**A WHOLE WORLD  
TO EXPLORE OUTSIDE.  
A WHOLE WORLD  
TO EXPLORE INSIDE.**

At Srishti Namaah, you will discover a world  
of abundance that redefines modern living.  
Here, residents live with the luxury of premium  
amenities, both indoors and outdoors.  
A thoughtfully curated lifestyle exists here.  
One you have been seeking all along.



**3 WELL-DESIGNED  
AMENITY AREAS.  
BECAUSE PERFECTION IS MULTI-FACETED.**

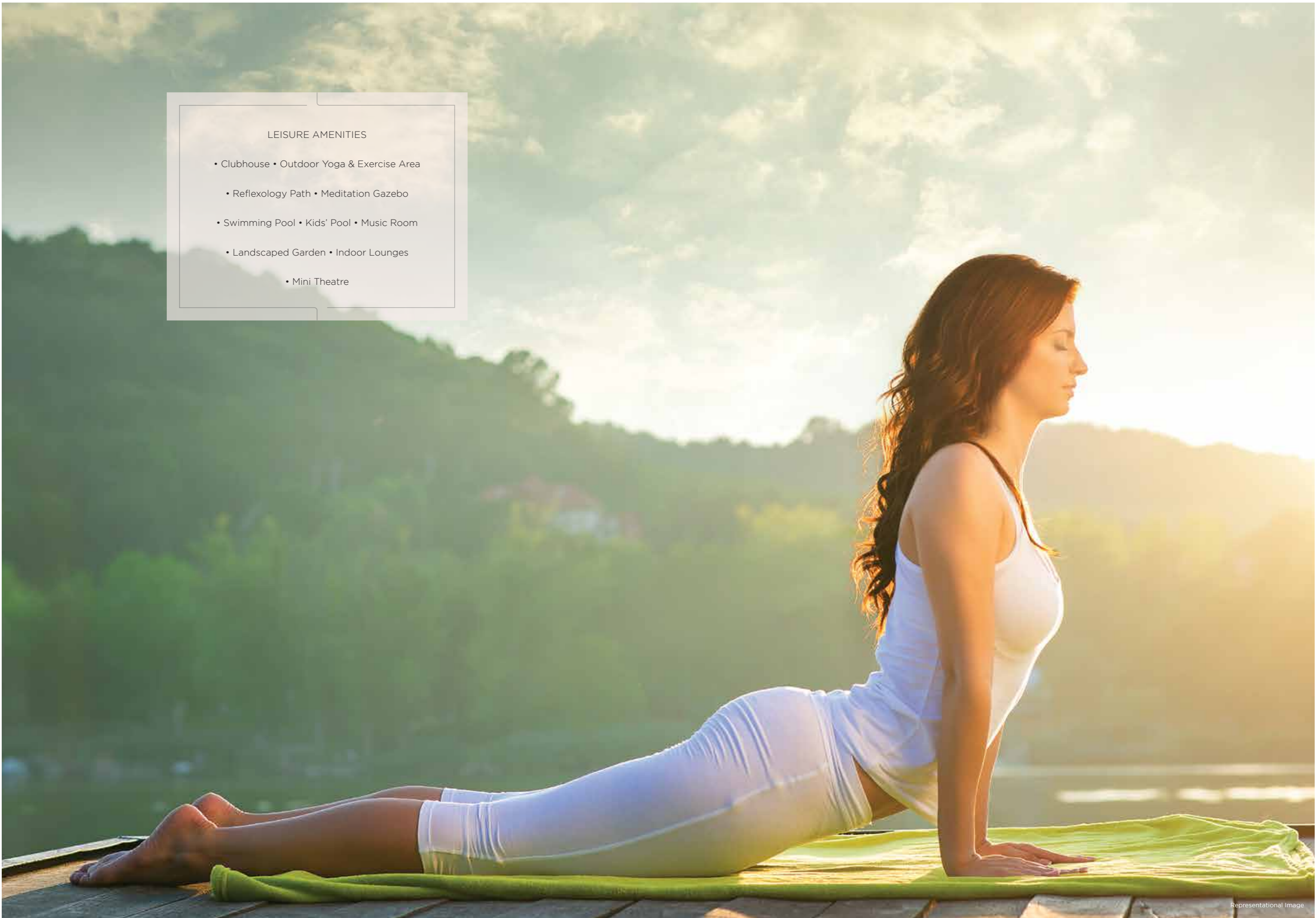
The thoughtfulness applied to the amenities here,  
also extends to how diverse and well spread out  
they are. Everywhere you go, you will find yourself  
immersed in comfort, modernity and luxury that  
truly goes beyond the basics.

LEISURE AMENITIES  
ACTIVE AMENITIES  
LIFESTYLE AMENITIES



LEISURE AMENITIES

- Clubhouse • Outdoor Yoga & Exercise Area
- Reflexology Path • Meditation Gazebo
- Swimming Pool • Kids' Pool • Music Room
- Landscaped Garden • Indoor Lounges
- Mini Theatre







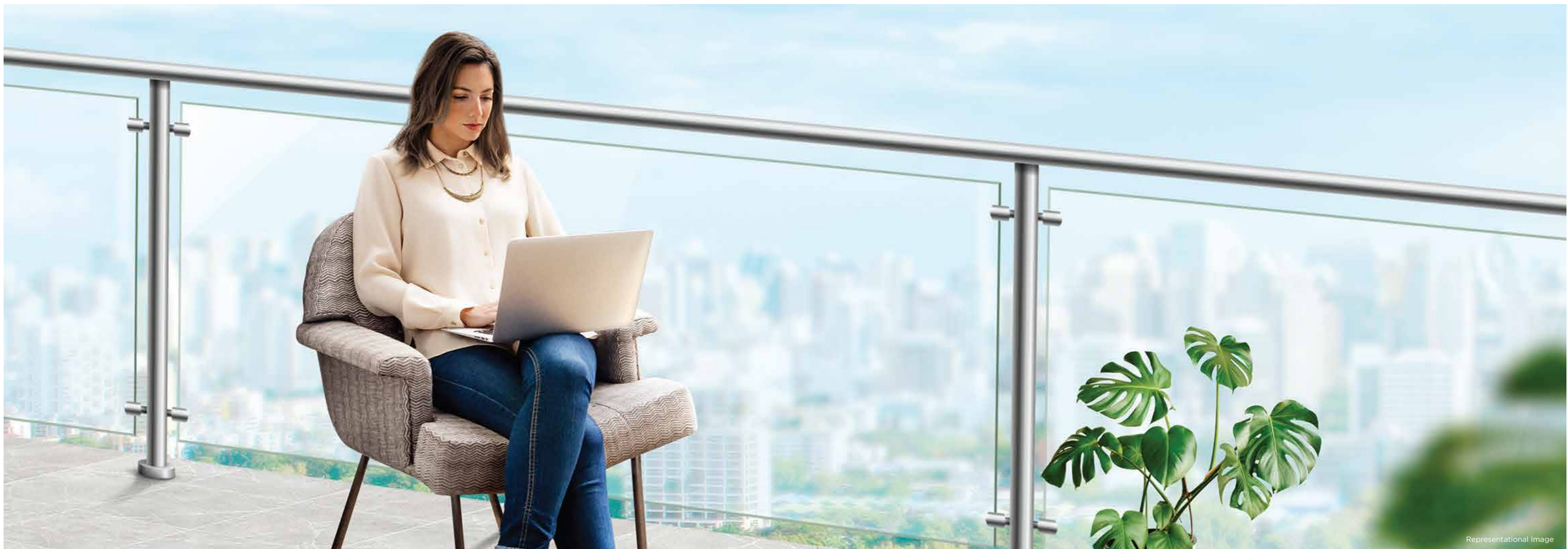
#### ACTIVE AMENITIES

- Gymsnasiums • Indoor Games Rooms
- Outdoor Kids' & Toddlers' Play Area
- Multipurpose Sports Court • Skating Park
- Walking/Jogging Track • Kids' Climbing Wall
- Badminton Courts x 2 • Table Tennis Room
- Pool Table Room



#### LIFESTYLE AMENITIES

- Pool Deck with Lounge Seating
- Multifunctional Lawn with Stepped Seating
- Co-working Lounges • Creche
- Study Rooms • Reading Corner
- Outdoor Seating Plaza



Representational Image

**HIGH STREET RETAIL ON GROUND LEVEL.  
PRIVATE SUNDECKS ON YOUR LEVEL.  
PERFECTION HAS A NEW ADDRESS, YOURS.**

Discover spacious 2 bed homes with private sun decks\* and serene views of the landscaped podium and the green cityscape. Discover the next level of perfection at Srishti Namaah.

\*Sundecks are available only in 2 BHK Prima - all variants, 3 BHK Prima in Towers A, B, C & H and 2 BHK Optima D in Tower C

**PERFECTION IS LOOKING  
AT THE EVERYDAY  
IN A BRAND NEW WAY.**

Discover homes built with efficient planning and minimum  
wastage of space. Homes that let the air and light in.

Homes with big spaces that give your life room to grow.

And give you the freedom to truly indulge in the  
joys of living well.

- No wastage of space in passages • Spacious and airy living rooms • Sundecks\* for larger than life leisure
- Spacious kitchens to cook and bond together in • A minimum of 2 restrooms in every apartment

\*Sundecks are available only in 2 BHK Prima - all variants, 3 BHK Prima in Towers A, B, C & H and 2 BHK Optima D in Tower C





Representational Image

**LOOKING FOR THE PERFECT  
PARKING SPOT?  
YOU'LL FIND PLENTY OF THEM HERE.**

Ample parking is something you can take for granted when you choose a home in Srishti Namaah, which has dedicated parking on Basement Level, Ground Floor and the Podium 1 Level. The Podium 2 Level however is an Eco-Deck where no vehicular movement is allowed, to ensure that peace and quiet is maintained.

**A PROJECT DESIGNED FOR  
FUTURE GENERATIONS.  
ANOTHER EXERCISE IN PERFECTION.**

At Srishti Namaah, eco-friendly operating procedures

form the backbone of a thriving and healthy

community that looks to the future with positivity.

This is because sustainability is not just a priority but

a guiding principle for this progressive community.

CHARGING STATION FOR ELECTRIC VEHICLES

WATER PRESERVATION TECHNIQUES

- Water-efficient plumbing fixtures • Rainwater Harvesting Pits • Reusing water from the Sewage Treatment Plant • Aerators to control water pressure and to regulate water flow • Use of native species of plants

WASTE-RECYCLING TECHNOLOGY

- Organic waste treatment provision • Use of local materials for construction
- Low VOC materials, paints, and adhesives incorporated to create a healthy, sustainable lifestyle.

DIFFERENTLY-ABLED FRIENDLY DESIGN

- Dedicated parking • Easy lobby access • Restroom provision • Wheelchair & stretcher board provision • Braille and audio assistance in lifts and pathways with adequate width.



## SPECIFICATIONS THAT REDEFINE LIFESTYLES

### PROJECT HIGHLIGHTS

- Well-designed, double height, air-conditioned lobbies
- Elegantly designed Eco-Deck with modern facilities
- Large landscaped garden on Eco-Deck Level
- Vehicle free Eco-Deck level

### COMPLEX AND BUILDING AMENITIES

- Separate drop-off for each tower
- DG back up for elevator and designated common areas
- Elevators including Auto Rescue Device (ARD)
- Rain Water Harvesting
- STP (Sewage Treatment Plant)
- Solar Photo-Voltaic System
- Piped gas connection
- Energy Efficient LED lighting in designated common areas & garden
- Vehicle Access Control System with Boom Barrier for the parking area

### LEISURE AMENITIES

- Clubhouse
- Outdoor Yoga & Exercise Area
- Reflexology Path
- Meditation Gazebo
- Swimming Pool
- Kids' Pool
- Music Room
- Landscaped Garden
- Indoor Lounges
- Mini Theatre

### ACTIVE AMENITIES

- Gymnasiums
- Indoor Games Rooms
- Outdoor Kids' & Toddlers' Play Area
- Multipurpose Sports Court
- Skating Park
- Walking/Jogging Track
- Kids' Climbing Wall
- Table Tennis Room
- Pool Table Room
- Badminton Courts x 2

### LIFESTYLE AMENITIES

- Pool Deck with Lounge Seating
- Multifunctional Lawn with Stepped Seating
- Co-working Lounges
- Creche
- Study Rooms
- Reading Corner
- Outdoor Seating Plaza

### SAFETY AND SECURITY

- Multi-Tier Security and Firefighting Systems
- Public Address System
- Intercom Facility integrated with Video Door Phone
- D.G Power Back-up for select common areas
- Sprinkler System & Mechanical Ventilation in the basement
- CCTV surveillance in designated common areas

### APARTMENT AMENITIES

- Vitrified tiled flooring in the living room, dining room & bedrooms
- Internal doors with laminate finish
- Aluminum sliding windows
- Main door with laminate finish
- Video Door Phone with in-built intercom facility at the apartment entrance
- Electric point provision for A.C in living room, dining rooms and bedrooms

### KITCHEN AMENITIES

- Vitrified tiled flooring
- Granite platform with stainless steel sink
- Tiled dado above the platform
- Kitchen equipped with PNG cum heat detector
- Provision for Water Purifier
- Utility Area provided in every home

### BATHROOM AMENITIES

- Tiled flooring with dado up to door height
- Premium sanitary and CP fittings
- Hot & Cold Water Mixer in the shower area
- Storage Water Heater in all bathrooms
- Exhaust Fan

**CHASING PERFECTION BECOMES  
EASIER WHEN 3 PARTNERS  
HAVE THE SAME VISION.**

Created in the early 1980s as a joint venture

between Kalpataru, Dynamix and

N.L Dalmia, Srishti brings together the

combined expertise of over 140 years.

Together, these partners have redefined their

respective sectors time and again. So let's

take a glimpse into this storied legacy.



Representational Image



Kalpataru Group encompasses sectors like power (KPTL), engineering (JMC), real estate (Kalpataru Ltd.) and property management (PSIPL), and is one of India's largest conglomerates with a turnover of over Rs. 12,000 crore. The group has created over 105 landmark projects across 9 cities. More than 18,628 happy families are now part of the Kalpataru family. Kalpataru Ltd. has won over 100 national and international awards.



Dynamix group has brought smiles to many families by creating 30,000 beautiful homes. They are the name behind the creation of 5 renowned commercial spaces in Mumbai. The group has successfully developed over 30 million sq.ft. across Mumbai and Thane. A 145 acre gated property which includes the Grand Hyatt has been developed by the group in Goa.



In 2014, NLDES received an acknowledgement for its contribution to society from The President of India. The N. L. Dalmia High School has won the "International School Award" from the British Council (2014- 2020) as well as the Times Education Icon Award (2017, 2018, 2019 & 2020). The N. L. Dalmia Institute of Management Studies and Research awarded the "Best Education Brand 2019", by the Economic Times.



**HOW TO OUTDO PERFECTION?  
WE'LL LEAVE THAT TO THE  
BEST MINDS IN THE BUSINESS.**

Your life at Srishti Namaah has been designed by the very best minds in the industry. Their expertise coming to the fore to create a project that truly redefines every aspect of living in Mira Road.

**OUR STRUCTURAL CONSULTANT:** Dr. Kelkar Designs is a global thinking outfit based in Mumbai. Dr. Kelkar (KDPL) brings a touch of international quality to structural designs and drawings. Their past work includes Marina Mall, Abu Dhabi | JSW Headquarters, BKC | Nehru Planetarium, Worli | GIFT City, Ahmedabad.

While Dr. Kelkar's work speaks volumes about the firm's capabilities, his personal contribution to the business has been recognised as well in the shape of the 'Life Time Achievement Award' by the Indian Concrete Institute for 'Outstanding Contribution to Concrete Technology' in 2007.

**ARCHITECTURAL CONSULTANT:** MQA (Mandviwala Qutub and Associates) headquartered in Mumbai MQA has been creating awe-inspiring structures since 1992. A few key highlights of their work are Wockhardt Hospital and School in UAE | ECGC, Mumbai | Sunteck Oshiwara District Center. They have also been the winners of The International Architecture Award, 2018 and International Property Awards (Bloomberg & Google) in 2011.

**LANDSCAPE CONSULTANT:** Manind Prasad, Principle Landscape Architect & founder of P S Landscape Design and Ecology. A few key highlights of their work are Hyatt Regency, Lucknow | F Residences, Pune 15 acres | Crescent Bay, Parel, Mumbai, 12 acres.





**N. L. Dalmia**  
Group

**Sales Office:** Srishti Sector 1A, Opp. Bhaktivedanta Hospital, Bhaktivedanta Swami Marg, Mira Road East. Thane- 401107

Srishti Namaah is registered with MAHARERA Regn. No. P51700029367 (Sector 2A - Wing A), P51700028685 (Sector 2A - Wing B), P51700029365 (Sector 2A - Wing G), P51700028686 (Sector 2A - Wing H), P51700033851 (Sector 2A - Wing C). For details, please refer: <https://maharera.mahaonline.gov.in>

Email: [sales@kalpataru.com](mailto:sales@kalpataru.com) | Website: [www.kalpataru.com](http://www.kalpataru.com)

Disclaimer: "All images are strictly for illustrative and representational purpose.  
The actual image (s)/ view(s) have been modified/enhanced for visual, illustrative and creative purpose"

