



GALA

CELEBRATING *Life*





Gala, Jitendra Road , Malad (E) , Mumbai - 97



Pranav Construction Pvt. Ltd. (PCPL) has established itself as a leading and successful developer of real estate in Mumbai by imprinting its indelible mark in the redevelopment of societies.

PCPL pioneers in building quality homes and delivering on schedule. The organization is driven by its unique approach to the redevelopment process, strong values, work culture and customer relationships.

# AMENITIES



## Reflexology Area

The acupressure walkway technically called a reflexology walkway is a path designed to massage and stimulate acupressure points on the soles of the feet, which are connected to various energy meridians of the body.



## Solar Panel

Solar panels are a great way to offset energy costs and reduce the environmental impact of your home.

## Yoga Deck

The Yoga Deck allows anyone from beginners to experts and teachers to make rejuvenating postures, breathing exercises, and meditations part of daily life.



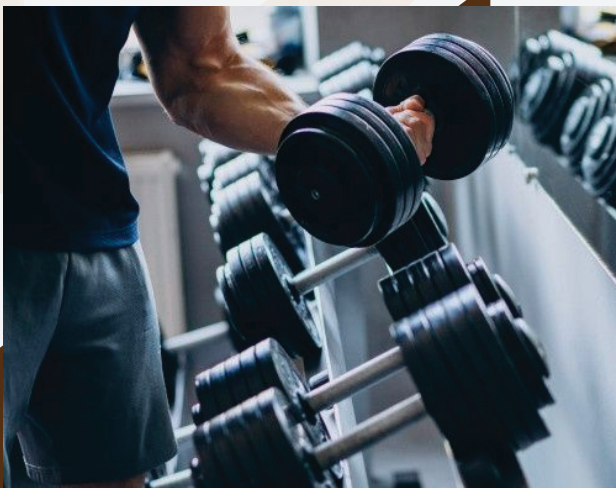


## Mini Turf

Mini turf is a surface of synthetic fibers made to look like natural grass. An ideal place for sports that were originally or are normally played on grass.

## Party Area

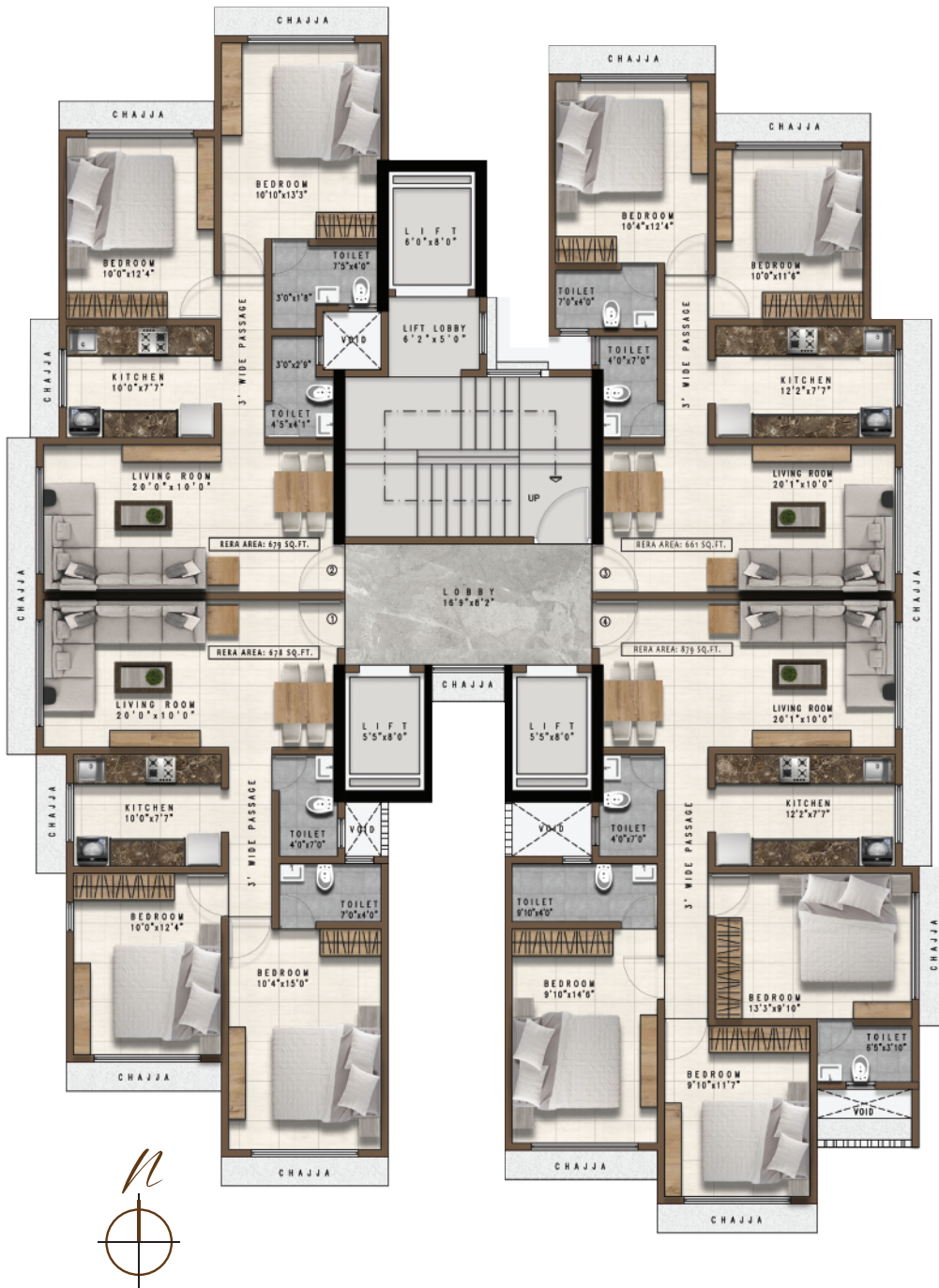
With an exclusive mini-event area now you can host large or small family gatherings without needing to step out of your building.



## Gymnasium

An Exclusive gym for everyone from those new to exercise, the fitness conscious, to the performance athletes. At the gym it's not just about weight loss or building muscle, it is about enabling complete fitness training for everyone.

# FLAT CONFIGURATION





# LOCATION SALIENCE



Gala, Jitendra Road , Malad (E) , Mumbai - 97

SCHOOL



2 Mins

RAILWAY STATION



5 Mins

HOSPITAL



2 Mins

TEMPLE



0 Mins