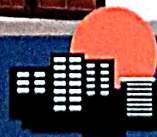


# Saraswati Sadan

A Project By  
Lakshmi Builders & Developer

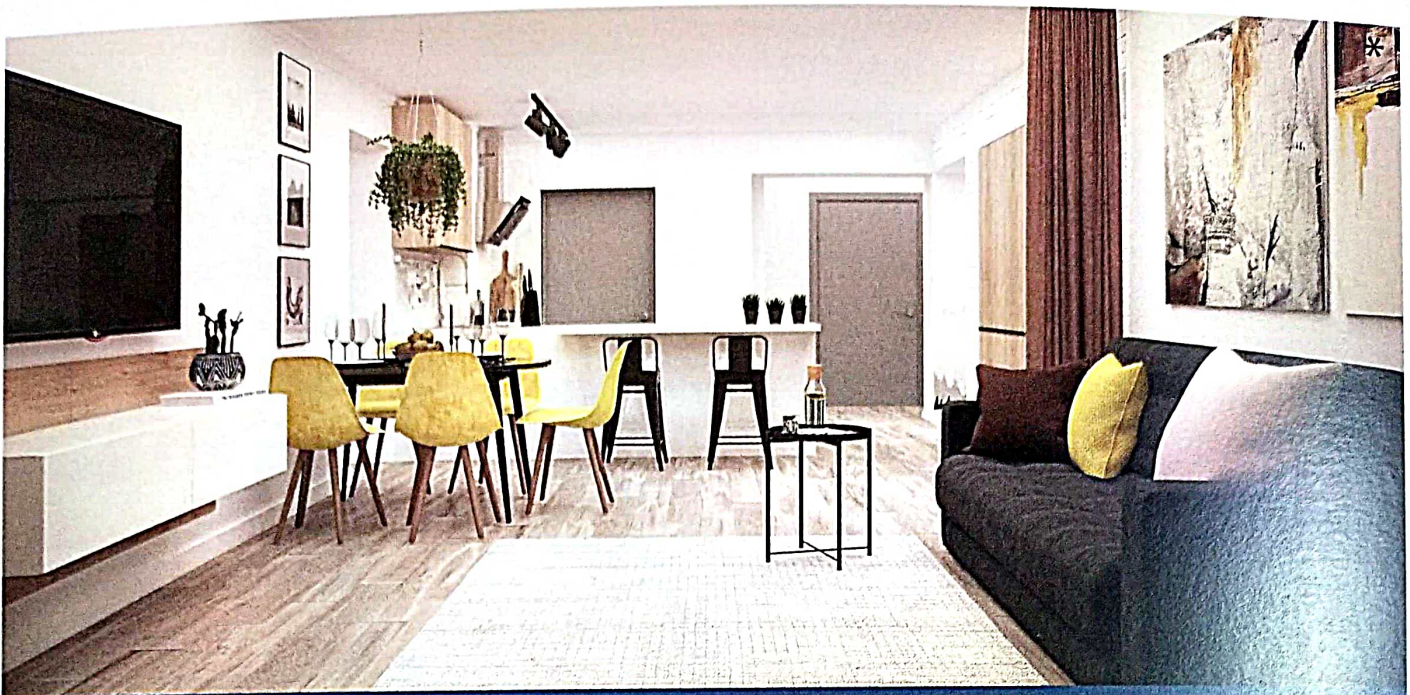


## Lakshmi Builders & Developer

AN ISO 9001-2008 CERTIFIED COMPANY

Maha RERA No.: P51800026655 | [www.maharera.mahaonline.gov.in](http://www.maharera.mahaonline.gov.in)

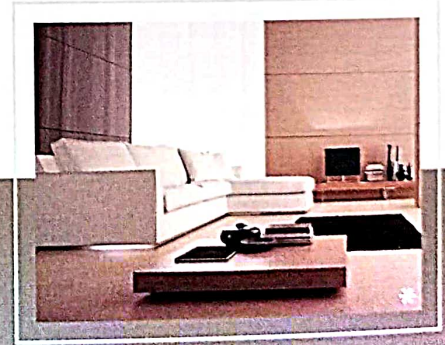




## CRAFTED FOR OPULENT LIVING

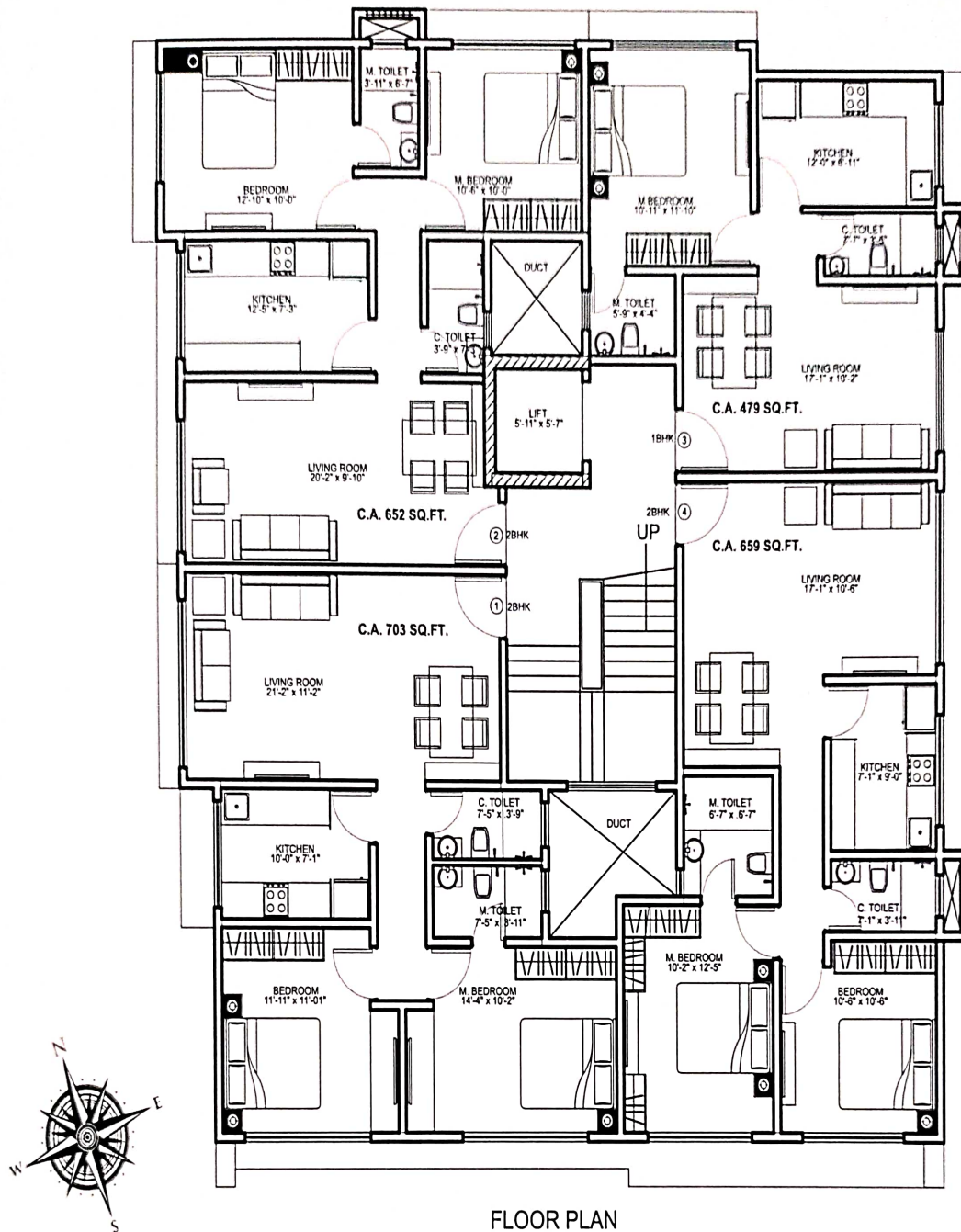
A sophisticated haven in the heart of Vile Parle. Saraswati Sadan is where refinement and luxury go hand in hand. This unique collection of homes is designed for the optimum life, designed with the perfect balance of aesthetics and utility in mind. From its location that is close to everything to the modern concepts and conveniences to enhance your life, it's a building that impresses.

Ideally designed to live "the life" in the maximum city with its amenities make it easy to feel at home. Saraswati Sadan is an address to be proud of.



## AMENITIES

- Modern decorative entrance lobby
- Hi-speed automatic elevator of Otis/Schindler
- Fitness centre
- Intercom facility/Video door phone
- Wall to wall elegant vitrified flooring
- Granite kitchen platform with built in stainless steel sink covered with full height designer tiles
- Full height designer ceramic tiles in the bathroom
- Branded sanitary ware and CP fittings
- Good quality concealed copper wiring with adequate points and modular switches
- Anodized aluminium sliding windows
- Superior quality paint in the entire home
- Spacious and airy flats with good ventilation



FLOOR PLAN

### PROJECT HIGHLIGHTS

- 6 Storey Building with gymnasium
- Easy connectivity to Western Express Highway
- Proximity to Vile Parle railway station
- Residential Community with proximity to several Jain Derasars, temples, markets, cinemas and shopping areas
- Proximity to hospitals, schools and colleges
- Reputed developers committed to excellent quality, complete satisfaction and prompt possession
- Vaastu friendly planning
- Project approved by leading banks and housing finance companies
- Maha RERA No.: P51800026655

