


**RAHEJA
RESIDENCY**
GIFT YOURSELF A LUXURIOUS LIFESTYLE!
MALAD (EAST)

SPACES THAT ARE PRICELESS.
HOMES THAT ARE LUXURIOUS.
GIFT YOURSELF
A LUXURIOUS LIFESTYLE!



LIFESTYLE FOR A LIFETIME

SINCE 1956
 **RAHEJA
REALTY**

A photograph of a young couple sitting on a light-colored sofa in a modern, well-lit living room. The woman has long dark hair and is smiling warmly at the camera. The man is wearing a blue turban and a light blue shirt, also smiling. They are embracing each other. The background shows a contemporary interior with a white ceiling and a window with blinds.

**RAHEJA
RESIDENCY**

GIFT YOURSELF A LUXURIOUS LIFESTYLE!

MALAD (EAST)

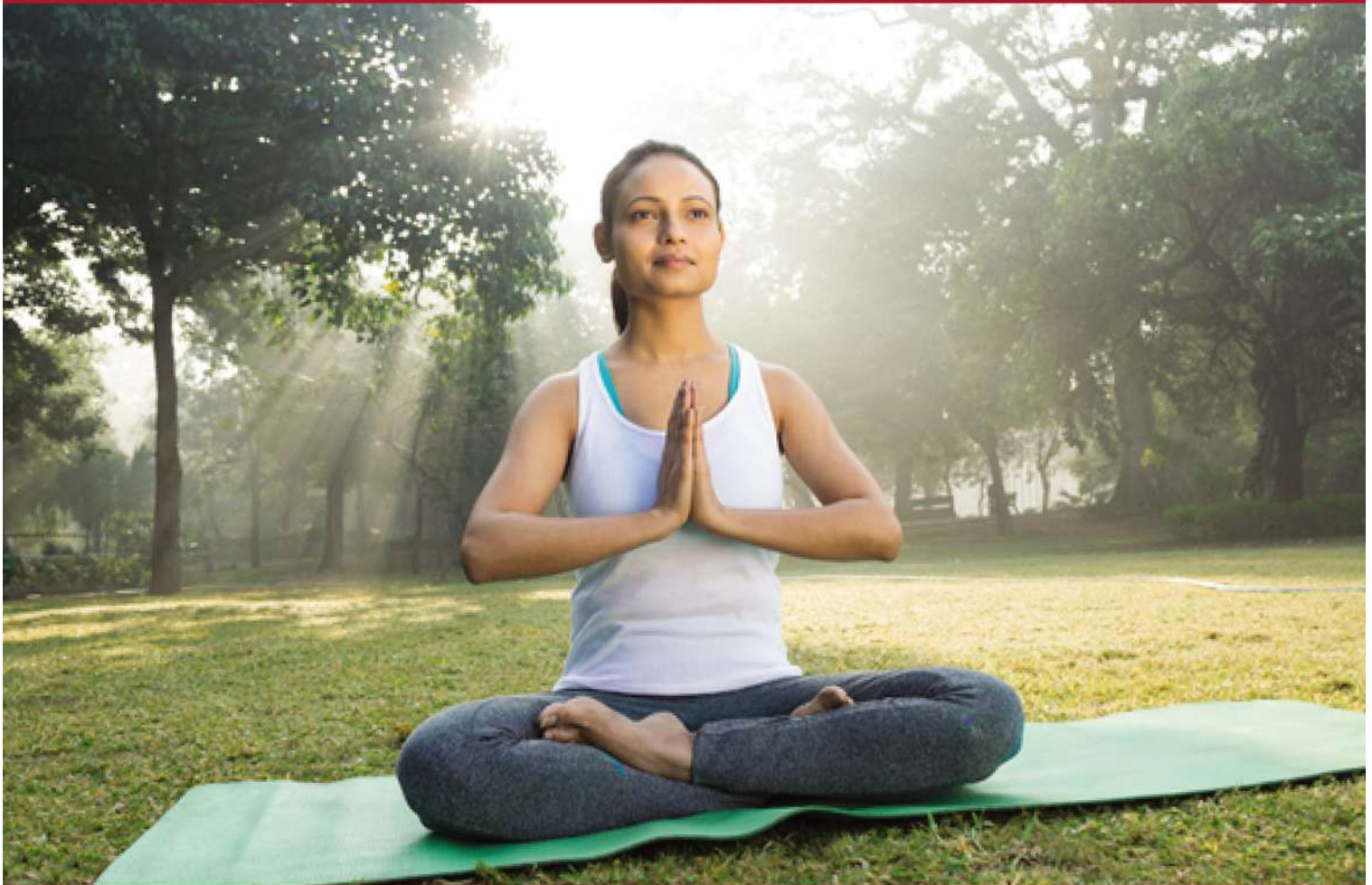
Introducing you to a life you've aspired for, and world-class designs you've always yearned for. This premium project by K Raheja Realty is adorned with every necessary convenience of city life. Raheja Residency is a truly one-of-its-kind opportunity for you to reside in an elite community of like-minded individuals that exudes the grace of being synonymous with luxury and matchless comfort. Raheja Residency is also in close proximity to prominent schools and colleges, Hospitals, banking institutions, and entertainment destinations, to mention just a few. It will surely be a decision that will elevate your life to absolute bliss.

MAKE EVERY MORNING REFRESHING.





**RAHEJA
RESIDENCY**
GIFT YOURSELF A LUXURIOUS LIFESTYLE!
MALAD (EAST)

CALM AND SERENE SURROUNDINGS ALWAYS.





**RAHEJA
RESIDENCY**
GIFT YOURSELF A LUXURIOUS LIFESTYLE!
MALAD (EAST)



**RAHEJA
RESIDENCY**
GIFT YOURSELF A LUXURIOUS LIFESTYLE!
MALAD (EAST)

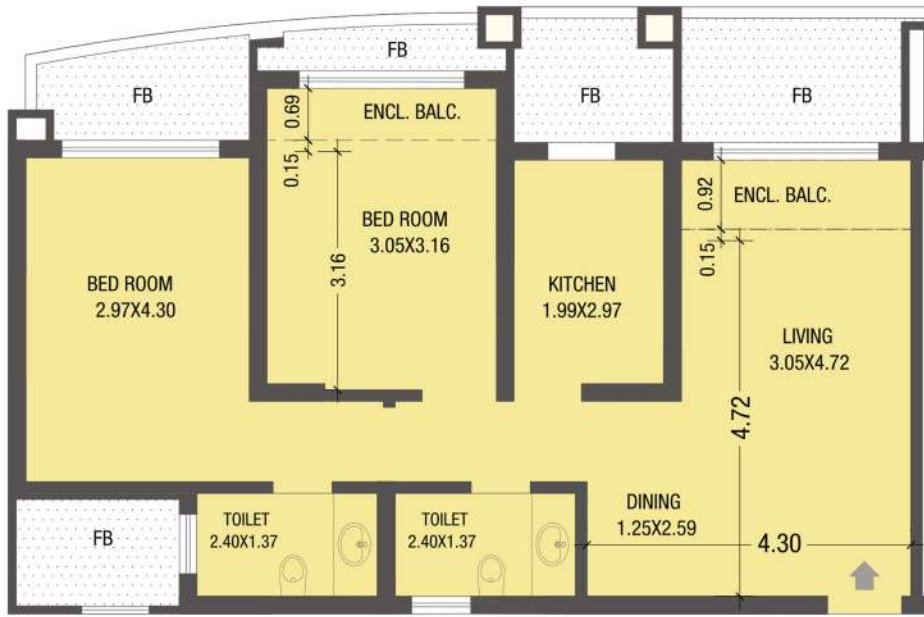
At K Raheja Realty's Raheja Residency, connectivity to Wester Express Highway and Goregaon Mulund Link Road plays a major role. Shorter Distances now helps prioritise your comfort and Convenience. Gift yourself the Luxurious Lifestyle with Raheja Residency Homes!



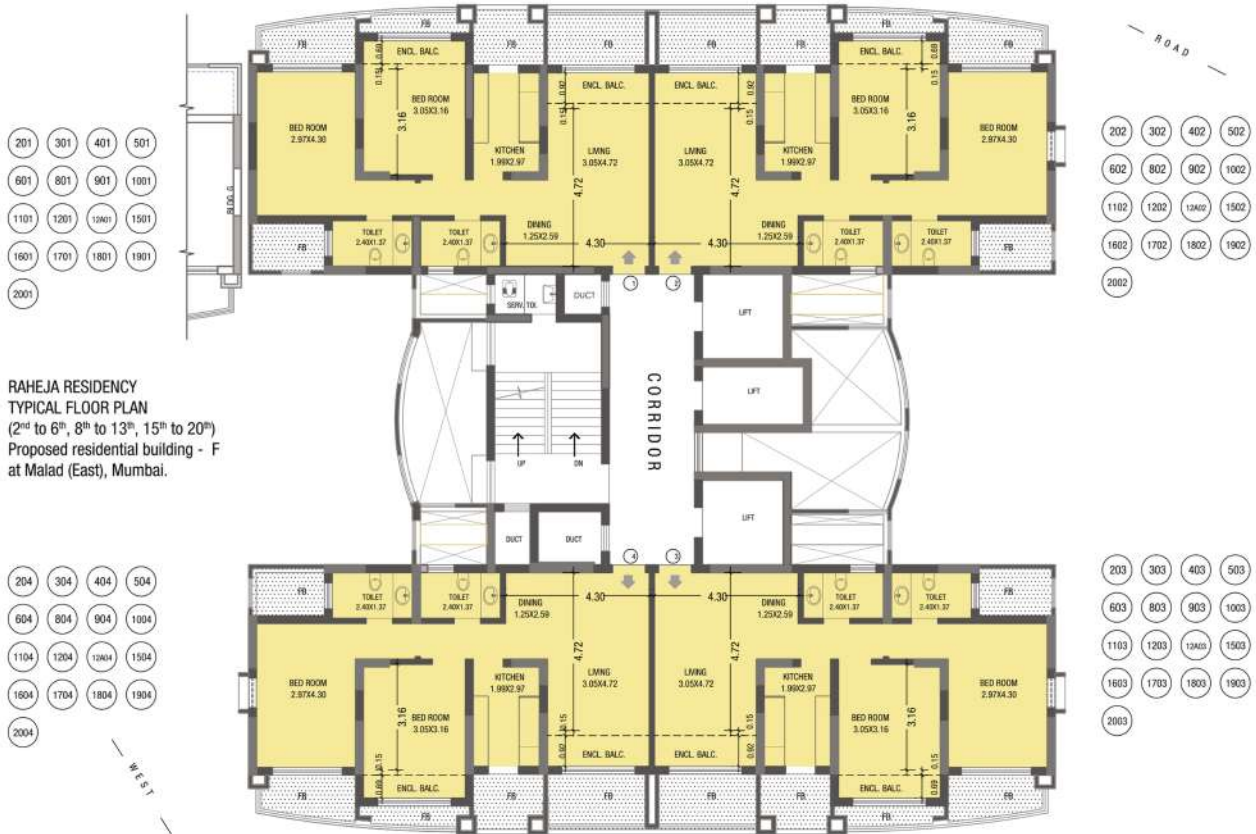
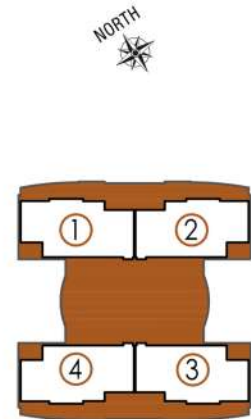

**RAHEJA
RESIDENCY**
GIFT YOURSELF A LUXURIOUS LIFESTYLE!
MALAD (EAST)



Actual Images



UNIT PLAN (2 BHK)
Flat no. 1, 2, 3 & 4 of Bldg.F



RAHEJA RESIDENCY
TYPICAL FLOOR PLAN
(2nd to 6th, 8th to 13th, 15th to 20th)
Proposed residential building - F
at Malad (East), Mumbai.

LIFESTYLE FOR A LIFETIME





K RAHEJA REALTY

Construction house 'B', 2nd flr., Opp. Khar Telephone Exchange,
623, Linking Road, Khar (West), Mumbai 400 052. India

PHONE: 022 61313131

sales@krahejarealty.com | www.facebook.com/krahejarealty

www.instagram.com/krahejarealty | www.krahejarealty.com

9324907519 | 9324907518

L I F E S T Y L E F O R A L I F E T I M E



CHANNEL PARTNER



Alfya

Jannat homes

 **8097827656**

Call