

THE CITY THAT OFFERS MORE



Representative Image

Buying a home in Mumbai is a dream of many who live here. Amongst the largest real estate markets in India right now, Mumbai promises more growth in the residential and commercial real estate sectors despite the ongoing pandemic.

The property sales in the residential sector in the Mumbai Metropolitan Region (MMR) grew threefold in the first quarter of 2021 and is expected to grow at an even more tremendous rate, thanks to the reduction in stamp duty rates declared by the state government. Lower home loan rates and easy availability of loans have also contributed to the upward trajectory of real estate sales this year.

Rising affordability means a conducive market for buyers in the current times, ensuring a promising future for all those who invest.

THE LAND OF **MORE** OPPORTUNITIES



Representative Image

Wadala is the new centre of the city with multiple infrastructural projects developing rapidly in and around. This massive developments ensure more opportunities for the future.



MUMBAI TRANS-HARBOUR SEA LINK

The Mumbai Trans Harbour Link (MTHL) is a 22km-long sea bridge being developed over the Mumbai Harbour in the Mumbai Metropolitan Region (MMR), Maharashtra, India. When completed, the MTHL will become the longest sea link in India.



BANDRA VERSOVA SEA LINK

The Versova-Bandra Sea Link is an under-construction bridge in Mumbai, Maharashtra, India. The 17.17 km bridge will connect Versova, a neighbourhood in the suburb of Andheri to the Bandra-Worli Sea Link in Bandra, as part of the Coastal Road.

METRO LINE

The 32.32 km line is planned to be fully elevated and is expected to consist of 32 stations from Wadala (Mumbai) to Kasarvadavali (Ghodbunder Road, Thane) via Ghatkopar, Mulund and Teen Hath Naka, a popular track crossing in Thane.



SEWRI-WORLI ELEVATED CORRIDOR (SWEC)

SWEC is a 4.5-km elevated corridor connecting the under-construction MTHL at Sewri on the east and the upcoming coastal road at Worli. The project includes two rail overbridges (RoB) at Sewri and another two-tier bridge at Prabhadevi.

MORE TIME FOR YOU

WADALA

Wadala is a growing residential and commercial area in the heart of the economic capital, giving it an advantage of connectivity with all the other areas and superb proximity with business hubs and infrastructural projects. This has led to Wadala becoming the hotspot for investments and development.

As a result, the project offers benefits such as:

Centrally located in Wadala
Well connected to schools, commercial places, healthcare facilities and entertainment centres. At close quarters with business hubs like BKC, Parel and Fort.



Representative Image

MORE

REASONS TO CELEBRATE LIFE



Representative Image



BEST EDUCATIONAL INSTITUTES IN THE VICINITY

- South Indian Education Welfare Society School - 8 mins
- National Kannada Education Society High School - 9 mins
- Auxilium Convent High School - 10 mins
- Sitaram Prakash High School - 12 mins
- VJT - 15 mins
- Don Bosco - 15 mins
- ICT - 16 mins
- Dyaneshwar Vidyalaya - 25 mins



CENTRALLY LOCATED

- Monorail - 1 min
- Wadala Business District - 4 mins
- Eastern Freeway - 5 mins
- Eastern Express Highway - 5 mins
- Local Rail (Harbour & Western) - 5 mins
- Bandra Kurla Complex - 10 mins
- Sewri - 14 mins
- Wadala station - 15 mins
- Lower Parel - 15 mins
- Fort - 20 mins



CLOSER TO THE BEST HEALTH CARE IN THE CITY

- Chinmay Nursing Home - 5 mins
- Smt. S.R. Mehta & Sir K. P. Cardiac Institute - 6 mins
- Aditya Jyot Eye Hospital - 9 mins
- BPT Hospital - 10 mins
- K. J. Somaiya Hospital - 10 mins
- Nowrosjee Wadia Maternity Hospital - 10 mins
- Wadala TB Hospital - 12 mins
- Tata memorial hospital - 23 min

Distance and time as per google maps. All points of attraction are indicative.

MORE ACCESSIBILITY



Representative Image



Wadala is a prime location at the heart of Mumbai. It is fast becoming a coveted address thanks to the development and a well-connected network of transport.

- GTB Monorail Station
- Eastern Freeway
- Proposed Wadala Metro Station

3 MIN

- Wadala Monorail Station
- Eastern Express Highway
- GTB Nagar Railway Station
- BKC Elevated Road

5 MIN

- Sion Railway Station
- Mumbai Trans Harbour Link
- Sewri-Chembur Road
- BKC

10 MIN

- Link Road (SCLR)
- Lower Parel

15 MIN

- Bandra Worli Sea Link
- Domestic & International Airport
- CSMT (Chhatrapati Shivaji Maharaj Terminus)

25 MIN

Not to scale. Distance and time as per google maps. All points of attraction are indicative.





**ADD
M  RE
TO LIFE**

PRESENTING...

PASSCODE

LIVE  MORE

1, 2 & 3 BED RESIDENCES

MORE IS...

When it's for you, your loved ones
Your aspirations, desires and comfort

When you want to explore
All the goodness of a fulfilling life

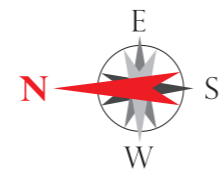
When you dream of an amazing life
That enhances your life

When you want to make life an easy ride
When you want to enjoy the luxury of time

Artist's Impression



MASTER PLAN



GROUND FLOOR

1. Security
2. Drop-Off Area/Waiting Plaza
3. Water feature with bubblers
4. 1.5M Wide Pathway
5. Landscape Feature
6. Landscape Mounds Area
7. Gravel bed
8. Planting Area
9. Multipurpose Court
10. 1.8M Wide Jogging Track
11. Reflexology Area
12. Open Gym
13. Sit Out
14. Cross-Fit Arena
15. Badminton Court
16. Outdoor Table Tennis
17. Cricket Net
18. Flower Garden
19. Rose Garden
20. Butterfly Garden
21. Forest Plantation
22. Pets Park
23. Nature Walk
24. Nature Seating Area
25. Bird Bath & Feeder

PODIUM

26. Entry Court
27. Jogging Track
28. Kids Play Area
29. Multiutility Area
30. Amphitheatre
31. Wooden Deck
32. Nana-Nani Park
33. Toddler's Play Area
34. Tree House
35. Swing park
36. Mist fountain
37. Chess Board
38. Reading Corner
39. Creative Corner
40. Sensory Garden
41. Fragrance Garden
42. Chit-Chat
43. Teenage Corner
44. Juice Bar+BBQ
45. Adults Pool

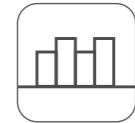
46. Kids Pool
47. Jacuzzi
48. Sunken Seating
49. Pool Deck
50. Overflow Edge
51. Pool Cafe
52. Healing Garden
53. Seating Area
54. Meditation Corner
55. Yoga lawn
56. Open Air Gym
57. Office Garden
58. Labyrinth Plaza & Zen Garden
59. Tree Court
60. Herb & Spice Garden
61. Seating Nook
62. Stage
63. Gymnasium
64. Changing Room/Spa
65. Changing Room/Spa
66. Club

Welcome to a life that offers more than your expectations!

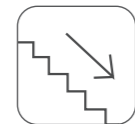
There is more to experience at these smartly designed 1, 2 and 3 bed residences. Come and explore this ionic masterpiece that will fill your life with more happiness.



3+ acres of open spaces across multiple levels



3 towers with 39 residential floors each



2 basements along with stilt and podium floors



6 elevators in each wing for ultra-comfort



Retail + commercial spaces for better convenience

MORE

EXPERIENCES FOR AN ENHANCED LIFESTYLE



MORE

GREENS TO
MAKE YOUR
LIFE SERENE



Representative Image

Rejoice in the beauty of extensive **3+ acres** of open spaces. Recuperate in the atmosphere of luxury and purity by being close to nature.

Ground Level



Bird Bath & Feeder Area



Reflexology Area



Flower Garden



Pets Corner



Forest Themed Plantation



Butterfly Garden

Podium Level



Outdoor Dining Area



Sensory Garden



Mist Fountain Area



Work From Garden



Tree House



Multipurpose Lawn



Healing Garden

MORE

INDULGENCES FOR ENRICHING EXPERIENCES



Artist's Impression

Discover the true meaning of 'Work hard, play hard', at our clubhouse equipped with a host of facilities like



Common Garden Play Area



Crèche



Toddlers' Play Area



Multi-games Room



Cricket Pitch



Professional Badminton Court



Multi-purpose Court



Billiards Room



Squash Court

Foster a lifestyle in our state-of-the-art homes equipped with



Swimming Pool



Amphitheatre



Gymnasium



Jacuzzi



Mini-theatre



Jogging Track



Meditation Area



Lounge & Seating Zone



Library



Banquet Hall



Artist's Impression

CLUB HOUSE PODIUM LEVEL



CLUB HOUSE LEVEL 1





ENJOY MORE HAPPINESS PER SQ.FT.

Representative Image

Soak up the luxury in our beautifully designed living rooms. A light, spacious area overlooking the greens where living becomes extraordinary.

Our magnificently planned bedrooms ensure zero wastage of space and offers ultimate comfort so that you get to dream great.

Experience the fun of cooking in our sleek yet straightforward kitchens, designed to ease your effort and raise your comfort.

Discover exquisitely designed bathrooms made just to uplift your experience and satisfy your senses as you relax and let the steam off.

ENJOY MORE EVERY MOMENT



HOME SPECIFICATIONS

Doors

Wooden frames
Wooden flush shutters

Windows

Powder coated aluminium windows

Flooring

Living /Dining - Vitrified tiles
Master bedroom - Vitrified tiles
Other bedrooms - Vitrified tiles

Kitchen

Floor - Double charged vitrified tiles
Countertops - Granite with steel sink
Dado - Ceramic tiles above counter top

Toilet

Floor - Anti-Skid ceramic floor
Dado - Ceramic tiles

CP and Sanitary fixtures

Chromium plated fittings with high-quality sanitary fixtures

Electricals

Superior quality concealed copper wiring, latest modular switches and miniature circuit breakers, provision for broadband point

Exterior finish

Texture paint

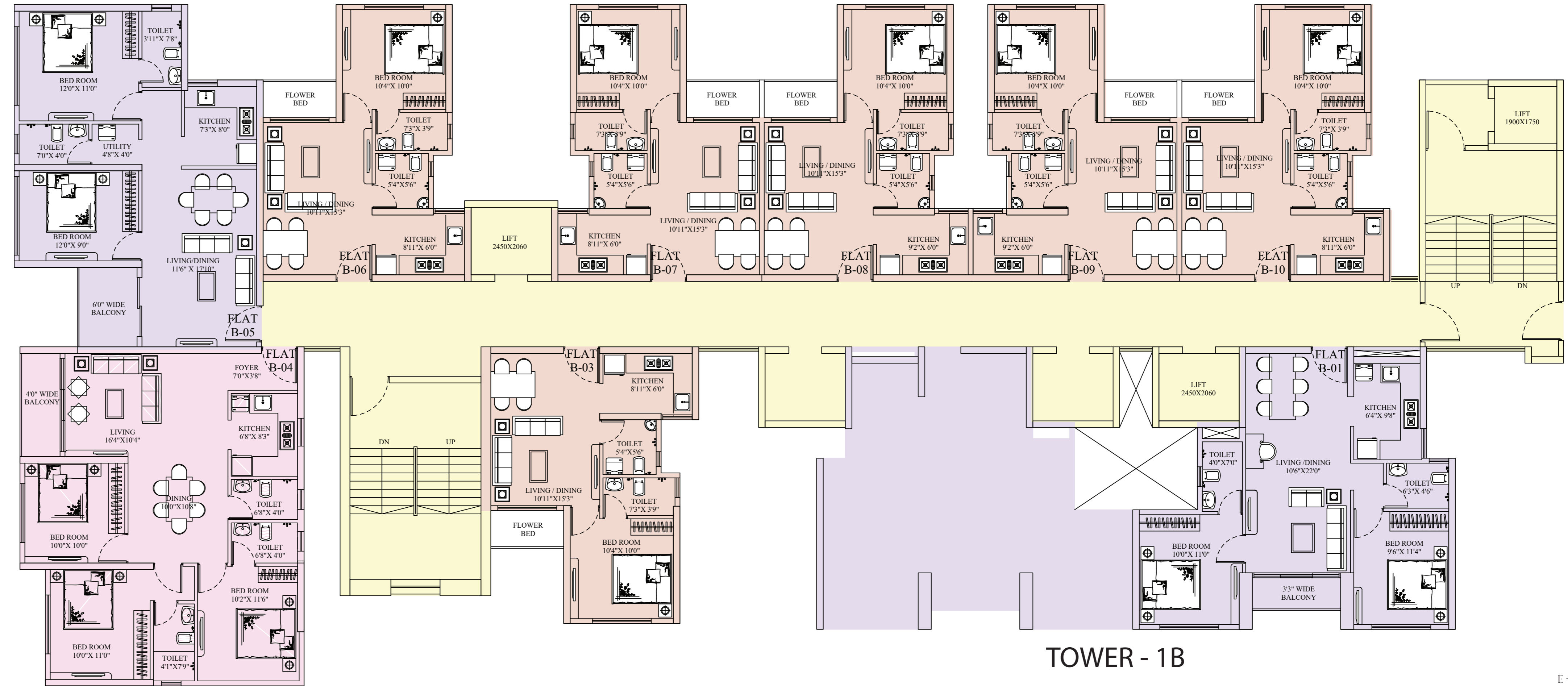
Ground floor lobby finish

Ceiling - Gypsum/Grid false ceiling
Lift fascia - Granite/Marble
Wall cladding - Combination of tiles, marble and paint

Typical floor lobby finish

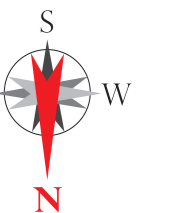
Ceiling - Gypsum/Grid false ceiling
Lift fascia - Granite/Marble
Dado - Vitrified tiles and paint combination

TYPICAL FLOOR PLAN 1 TO 28 FLOOR

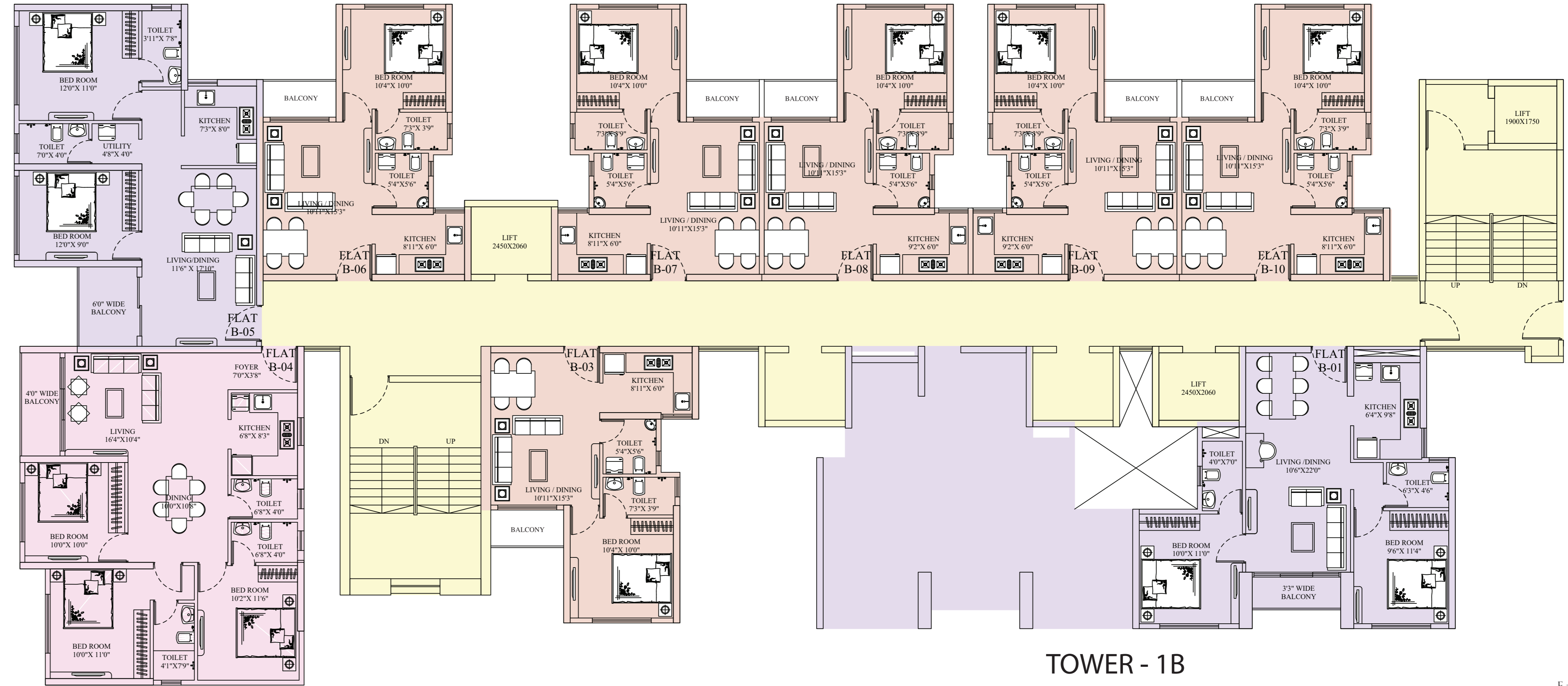


TOWER - 1B

Please Note: The interiors, furniture, fittings, fixtures, etc. shown in the image/drawing are only artist's conception and not part of actual amenities provided. The actual amenities as mentioned in the Agreement for Sale shall be final and provided in the flats. All dimensions of carpet area are from unfinished wall surface. Minor variations/tolerance of +/- 3% in carpet area may occur on account of design and/or construction exigencies. *Conversion: 1 sq. mt. = 10.764 sq. ft. *Conversion in square feet for convenience purpose & easy understanding.



TYPICAL FLOOR PLAN 29 AND ABOVE

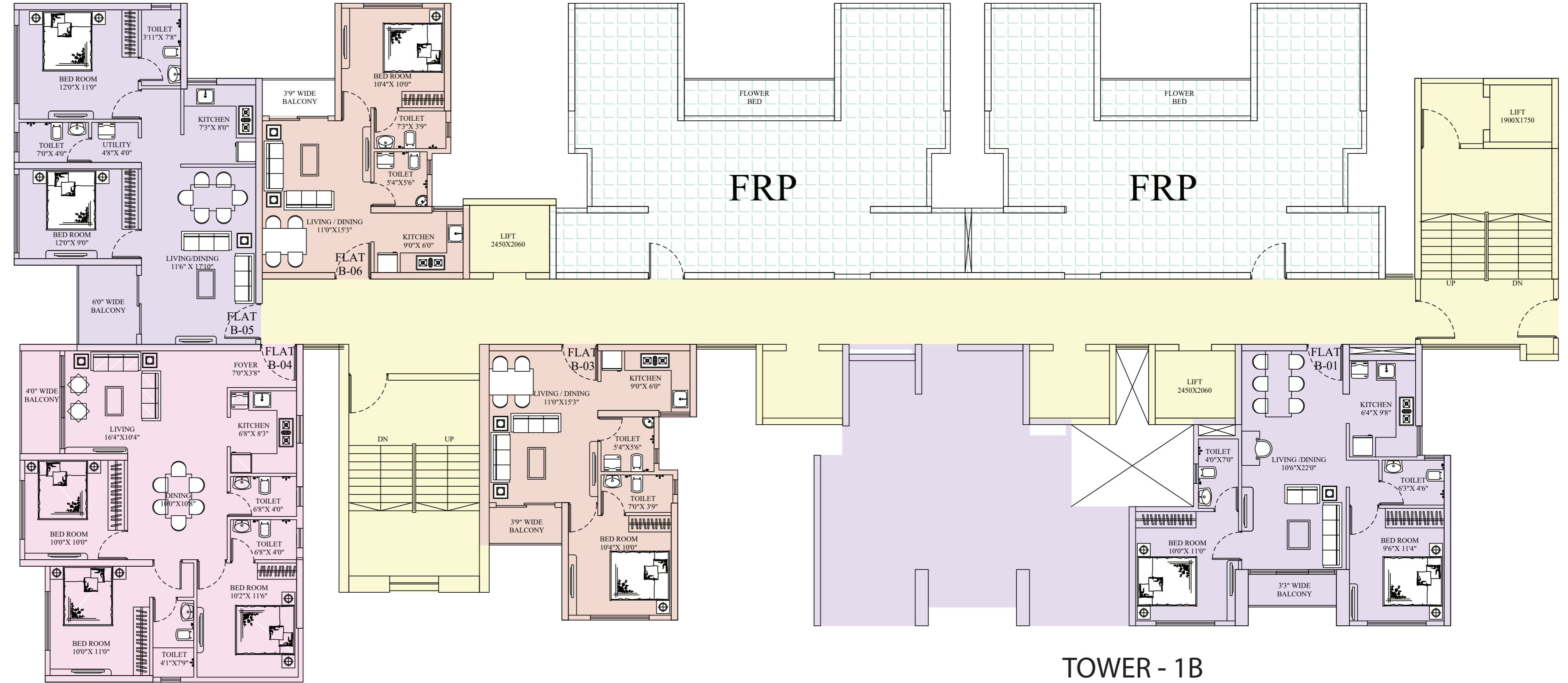


TOWER - 1B

Please Note: The interiors, furniture, fittings, fixtures, etc. shown in the image/drawing are only artist's conception and not part of actual amenities provided. The actual amenities as mentioned in the Agreement for Sale shall be final and provided in the flats. All dimensions of carpet area are from unfinished wall surface. Minor variations/tolerance of +/- 3% in carpet area may occur on account of design and/or construction exigencies. *Conversion: 1 sq. mt. = 10.764 sq. ft. *Conversion in square feet for convenience purpose & easy understanding.



REFUGE FLOOR PLAN



TOWER - 1B

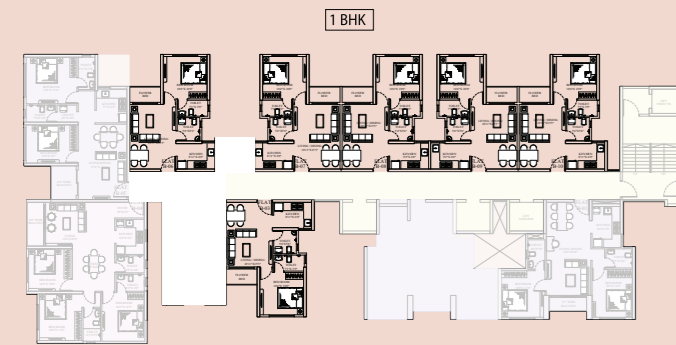
Please Note: The interiors, furniture, fittings, fixtures, etc. shown in the image/drawing are only artist's conception and not part of actual amenities provided. The actual amenities as mentioned in the Agreement for Sale shall be final and provided in the flats. All dimensions of carpet area are from unfinished wall surface. Minor variations/tolerance of +/- 3% in carpet area may occur on account of design and/or construction exigencies. *Conversion: 1 sq. mt. = 10.764 sq. ft. *Conversion in square feet for convenience purpose & easy understanding.



1 BHK WITH BALCONY

RERA CARPET AREA - 404 SQ FT
BALCONY AREA - 24 SQ FT

KEY PLAN

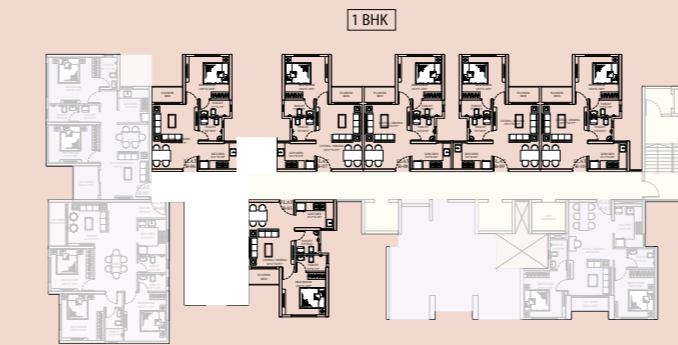


Please Note: The interiors, furniture, fittings, fixtures, etc. shown in the image/drawing are only artist's conception and not part of actual amenities provided. The actual amenities as mentioned in the Agreement for Sale shall be final and provided in the flats. All dimensions of carpet area are from unfinished wall surface. Minor variations/tolerance of +/- 3% in carpet area may occur on account of design and/or construction exigencies. *Conversion: 1 sq. mt. = 10.764 sq. ft. *Conversion in square feet for convenience purpose & easy understanding.

1 BHK WITHOUT BALCONY

RERA CARPET AREA - 404 SQ FT

KEY PLAN

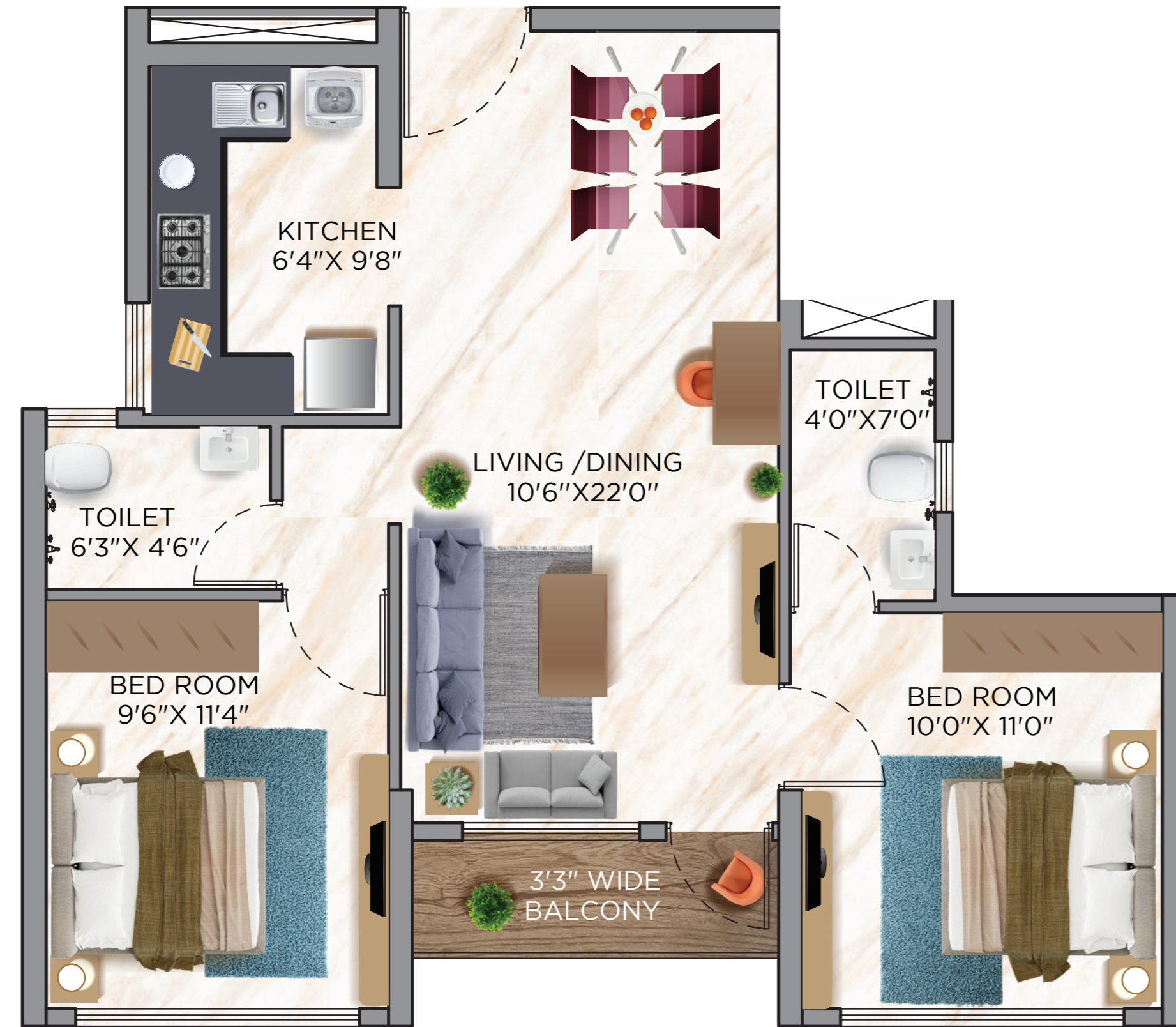
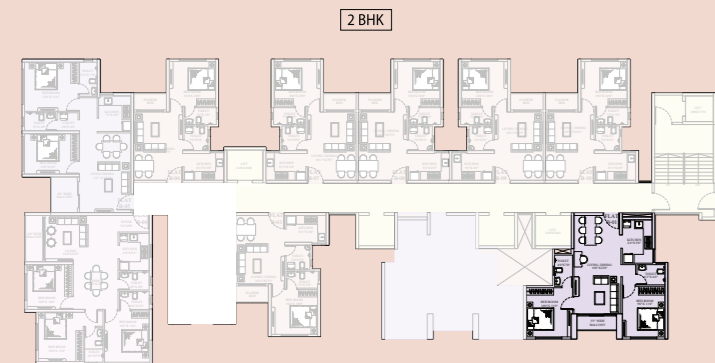


Please Note: The interiors, furniture, fittings, fixtures, etc. shown in the image/drawing are only artist's conception and not part of actual amenities provided. The actual amenities as mentioned in the Agreement for Sale shall be final and provided in the flats. All dimensions of carpet area are from unfinished wall surface. Minor variations/tolerance of +/- 3% in carpet area may occur on account of design and/or construction exigencies. *Conversion: 1 sq. mt. = 10.764 sq. ft. *Conversion in square feet for convenience purpose & easy understanding.

2 BHK WITH BALCONY

RERA CARPET AREA - 612 SQ FT
BALCONY AREA - 25 SQ FT

KEY PLAN

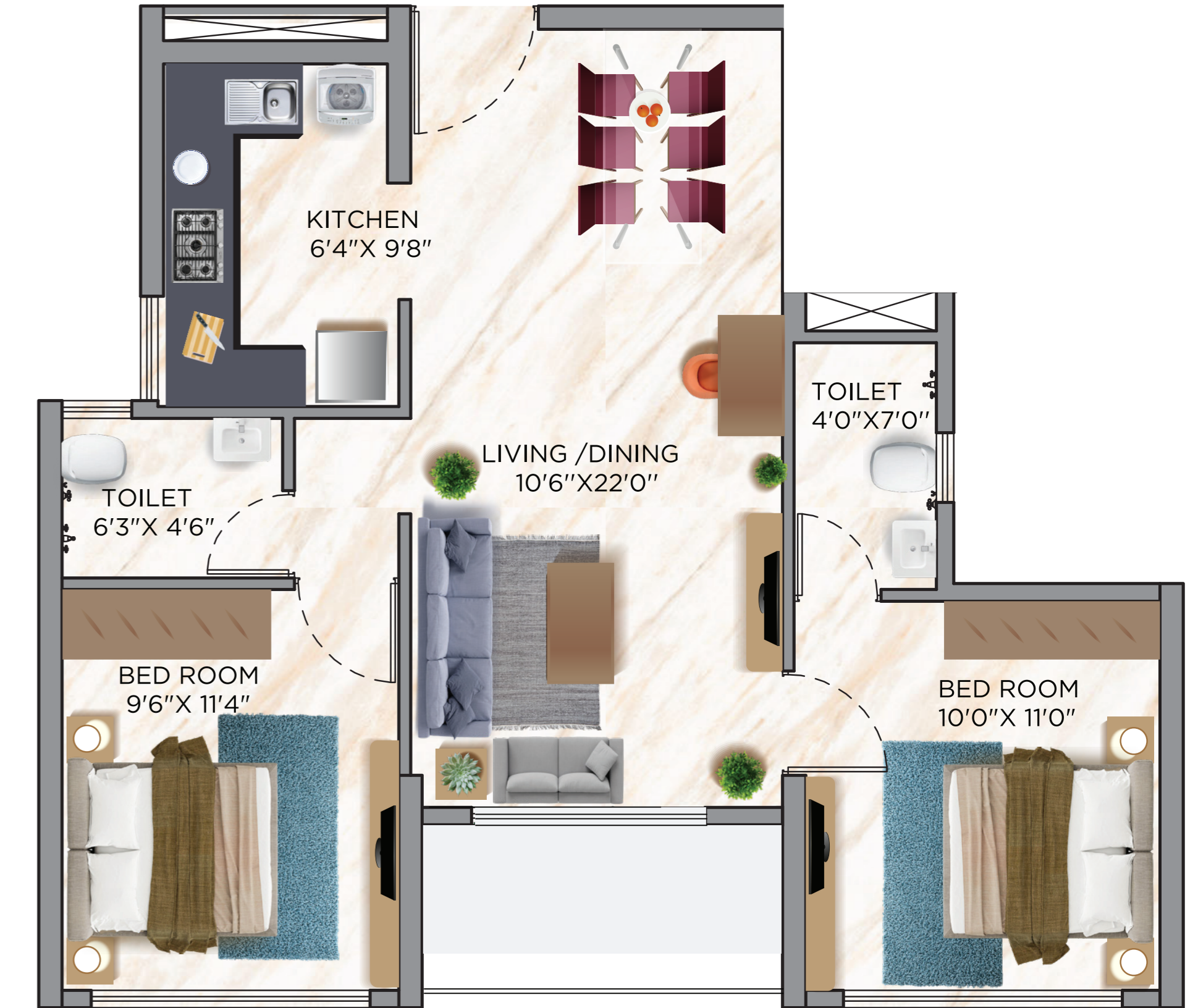
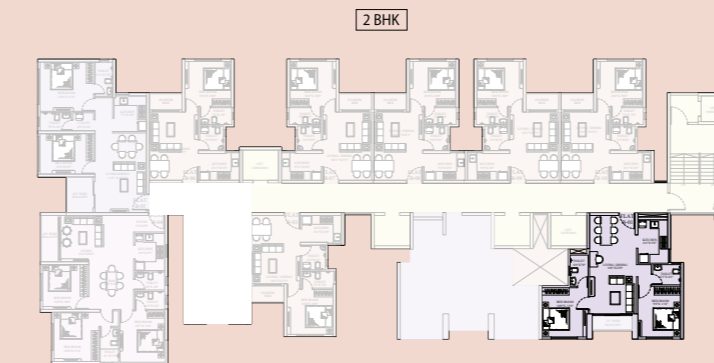


Please Note: The interiors, furniture, fittings, fixtures, etc. shown in the image/drawing are only artist's conception and not part of actual amenities provided. The actual amenities as mentioned in the Agreement for Sale shall be final and provided in the flats. All dimensions of carpet area are from unfinished wall surface. Minor variations/tolerance of +/- 3% in carpet area may occur on account of design and/or construction exigencies. *Conversion: 1 sq. mt. = 10.764 sq. ft. *Conversion in square feet for convenience purpose & easy understanding.

2 BHK WITHOUT BALCONY

RERA CARPET AREA - 606 SQ FT

KEY PLAN

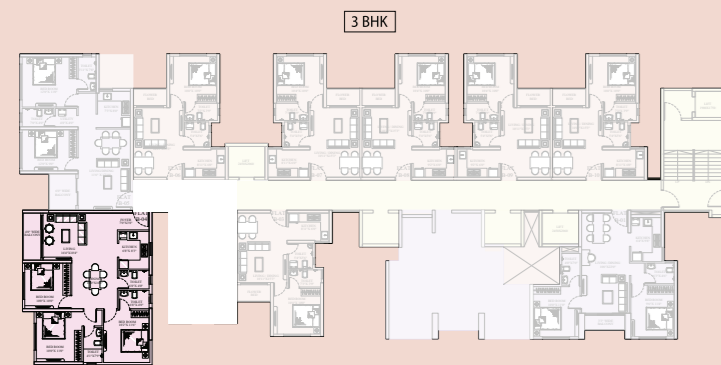


3 BHK WITH BALCONY



RERA CARPET AREA - 829 SQ FT
BALCONY AREA - 37 SQ FT

KEY PLAN



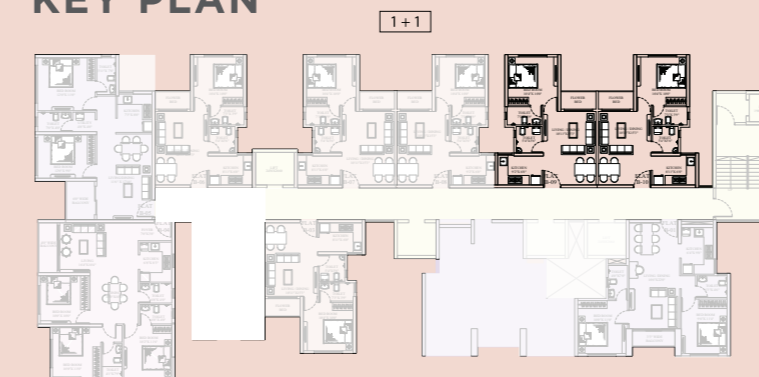
Please Note: The interiors, furniture, fittings, fixtures, etc. shown in the image/drawing are only artist's conception and not part of actual amenities provided. The actual amenities as mentioned in the Agreement for Sale shall be final and provided in the flats. All dimensions of carpet area are from unfinished wall surface. Minor variations/tolerance of +/- 3% in carpet area may occur on account of design and/or construction exigencies. *Conversion: 1 sq. mt. = 10.764 sq. ft. *Conversion in square feet for convenience purpose & easy understanding.

JODI FLAT (1+1)



RERA CARPET AREA - 803 SQ FT

KEY PLAN



Please Note: The interiors, furniture, fittings, fixtures, etc. shown in the image/drawing are only artist's conception and not part of actual amenities provided. The actual amenities as mentioned in the Agreement for Sale shall be final and provided in the flats. All dimensions of carpet area are from unfinished wall surface. Minor variations/tolerance of +/- 3% in carpet area may occur on account of design and/or construction exigencies. *Conversion: 1 sq. mt. = 10.764 sq. ft. *Conversion in square feet for convenience purpose & easy understanding.



Artist's Impression

SIDDHA

Since its inception in 1986, Siddha has been crafting residential and commercial spaces with a difference, to make good living affordable in 4 cities across India, namely Kolkata, Mumbai, Jaipur and Bengaluru.

Under the leadership of Group Chairman Shri Chandra Prakash Jain and Group Managing Director Shri Sanjay Jain, Siddha has won 25+ prestigious awards over 33 years of experience. They have been the pioneers of Rooftop Skywalks in India.

SEJAL

Sejal Realty was formed with the sole objective of changing the current landscape of Indian Infrastructure by focusing on the redevelopment of society and SRA projects to promote the conservation of built and natural heritage structures in Mumbai, which needed to be protected, nourished and maintained.

With the foresight and strong vision of our Chairman, Managing Director and a team of dedicated professionals, the Group is poised to launch many more projects, with its commitment to 'Excellence', 'Innovation' and 'Passion' with trust.

starom

StarOm Group, under the leadership of Shri Vishal Jhajharia, has established itself as a premier realty company in less than a decade. Driven towards creating homes with a soul, the vision of the Group is to reach out to varied consumers with focused demand and to understand consumer requirement. The group intends to create landmark projects which reflects a lifestyle and culture in entirety. StarOm is now coming up with a variety of projects in the LIG, MIG, luxury residential as well as in the commercial, retail and industrial spaces.

SPRING CITY GROUP

Spring City Group is one of the leading real estate developers in East India. SCG is focusing on residential and commercial projects across the country since a decade, with the principles of innovation and reliability. The SCG team led by Shri Vijay Kumar Goyal, is well supported by industry experts, leading management and consultants along with over 50 combined years of management experience amongst the executives.



EXPERIENCE

MORE

WAYS TO ENJOY LIFE



Artist's Impression