



T
A
K
E

A
B
I
T
E

O
F
T
H
E

B
I
G

A
P
P
L
E



MANHATTAN, THE BIG APPLE.

It's more than a city. It's the world's cultural melting pot with its iconic culture and lifestyle. Studded with its gleaming skyscrapers and a bustling energy, Manhattan is where the world wants to live.

Which is why, we're bringing it home to Wadala, Mumbai.





TWO CITIES. ONE SOUL.

No two cities are more similar than Mumbai and Manhattan.

From the electric pace and bustling energy to the happening nightlife and the love for art and cinema.

Manhattan could be called Mumbai's global counterpart.



GLOBAL BY DESIGN, INDIA AT HEART. THE AJMERA GROUP.

With a global mindset and a heart rooted in India,
we have come a long way since 1968.





AJMERA GROUP AN EXPANSE OF EXCELLENCE.



Built on Trust





Reference image



EDUCATION



RENEWABLE ENERGY



LOGISTICS



SPORTS



CEMENT



SAFE DEPOSIT LOCKERS

Reference image

OUR JOURNEY OF LEGACIES.

1980

We built Shanti Nagar in Mira Road, Asia's Biggest Township

1994

We collaborated with Mehta Group to build Kalyan's one-of-a-kind luxury real estate - Yogi Dham

2001

We built Citi Mall, Mumbai's first ever Mall-Multiplex

2006

We built the biggest residential project in Electronic City, Bangalore-Ajmera Infinity

2006

We gave Wadala 25 acres of lush private garden, the biggest in the city - Bhakti Park

2008

We envisaged the tallest residential towers with Bahrain Bay- Golden Gate Towers

2008

We helped facilitate IMAX Dome Theatre in Wadala - the world's biggest dome theatre of its time

2010

We changed Mumbai's residential living forever with Ajmera i-Land in Wadala

2014

We brought global standards of education to Mumbai with Ajmera Global School in Borivali

2022

We unveiled Ajmera Manhattan at Ajmera i-Land, Wadala





ALL RIVERS OF INSPIRATION FLOW TO **WADALA**

Which is why Wadala is a land of many firsts.

First to have a 25-acre private garden

First monorail in Mumbai

First IMAX Dome theatre in India

First & only freeway of Mumbai

Wadala offers excellent connectivity to every part of
Mumbai and its sister cities.

With an ever-expanding network of roads, metros, railways and
water transport, every part of Mumbai is easily accessible from here.



IF IT'S WADALA IT HAS TO BE AJMERA.

Just say 'Ajmera' in Wadala and you will be taken to
the landmarks we have constructed like:

**AJMERA
BHAKTI PARK**

**AJMERA
AEON**

**AJMERA
ZEON**

**AJMERA
TREON**

**AJMERA
GREENFINITY**





THE FUTURE OF GLOBAL LIVING IN MUMBAI



Sprawled across a mammoth 100 acres, Ajmera i-Land has established itself as a space for futuristic living. With iconic landmarks like Aeon, Zeon, and Treon. Born of a vision of how future living should be, our landmark offering is a beacon of Mumbai's new luxury lifestyle and contemporary living.

REDEFINING MUMBAI'S CONNECTIVITY OF TOMORROW.



Close Proximity to
Chembur &
Navi Mumbai via
Eastern Freeway



2 mins from
Bhakti Park
Monorail Station



4 mins from
Proposed Metro
Rail Line 4



10 mins from
Proposed Nhava Sheva
Sea Link



10 mins
from BKC



20 mins from
Fort via
Eastern Freeway

 Metro Line 2A - Dahisar - DN Nagar
Metro Line 2B - DN Nagar - Mandale

 Metro Line 4 - Wadala - Kasarvadavli

 Chembur - Sant Gadge Maharaj Chowk (Monorail)

 Sewri - Worli Elevated Corridor

 Trans Harbour Link (Sewri to Chirle in Navi Mumbai)



BECAUSE REAL LUXURY IS TIME SAVED TRAVELLING.



DIRECT ACCESS TO EASTERN FREEWAY



SION PANVEL HIGHWAY



BHAKTI PARK MONORAIL STATION



PROPOSED METRO RAIL - LINE 4



**7 MINUTES TO BKC VIA
BKC CHUNABHATTI CONNECTOR**

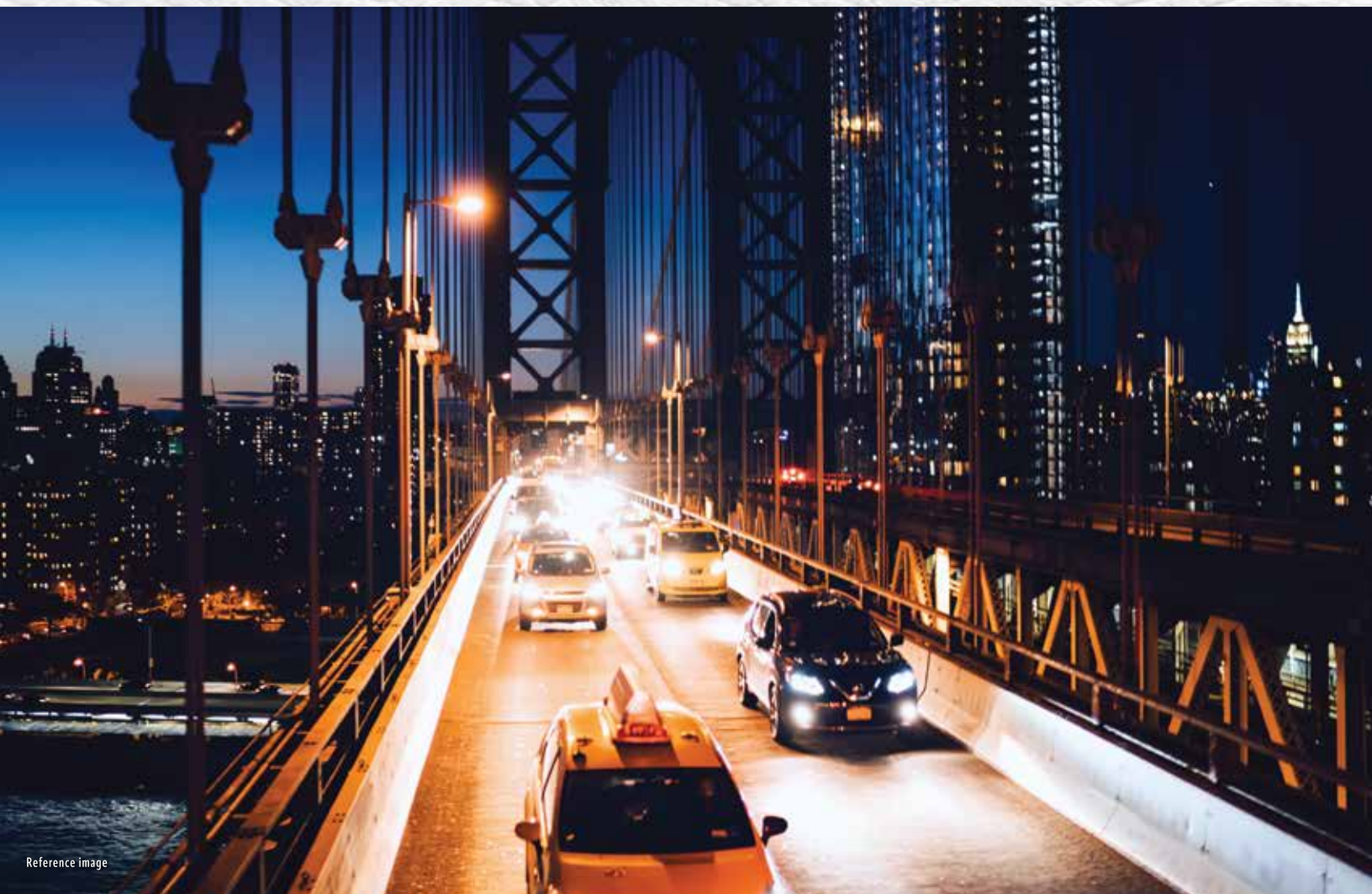


**10 MINUTES TO PROPOSED
NHAVA SHEVA SEA LINK**

AFTER THE
FIRST TASTE OF INTERNATIONAL
LIVING IN WADALA,
AJMERA IS PROUD TO UNVEIL
ITS FINEST OFFERING YET.



**WE'RE
BRINGING**
Manhattan
TO MUMBAI.

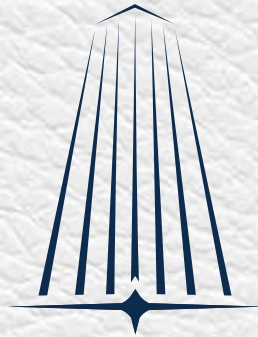


WELCOME TO AJMERA

Manhattan,

WADALA (E)

A-first-of-a-kind urbanscape in the heart of Mumbai.



AJMERA
MANHATTAN

— i - Land, Wadala (E) —





LIFE CAN BE SO MUCH MORE THAN AN APARTMENT IN A BUILDING.

Multiply Mumbai with Manhattan to imagine the full experience of Ajmera Manhattan. Your city within a city, right in Wadala. It will be the hub of commercial, residential, sporting, and entertainment offerings, filled to the brim with the best of global lifestyle experiences.





[HOLYFIELD GYMS][®]

PUNCH ABOVE YOUR WEIGHT WITH HOLYFIELD FITNESS.

AJMERA MANHATTAN will be home to HOLYFIELD GYMS designed by one of the greatest boxing legends of all time, EVANDER HOLYFIELD. Set in fresh, fun, and fantastic environments, these next-gen gyms use result-driven proprietary fitness methodologies to deliver a revolutionary fitness experience.

[HOLYFIELD GYMS]



BREATHE,
SIGH, AND RELAX AT OUR
HEALTH SPA.



FUN PLAY AREAS FOR YOUR TINY TOTS.



WOOF!
YES, YOUR PETS HAVE A
PET PARK.



ZEN
COMES EASY ON YOUR
YOGA DECK.



BREAK
FITNESS RECORDS ON YOUR
JOGGING TRACK.



SECURITY FIRST WITH
**I-SAFE LOCKER
FACILITIES.**



GAME ON AT THE MULTIPLE GAMES COURT.



SWIMMING POOL.
SPLASH. CHILL.
REPEAT.

*Select amenities will be delivered with the completion of project as per the larger layout





2 & 3
BEDROOMS
INSPIRED LIVING.





HOMES AS SMART AS YOU.

- Armed with Home Automation Systems
- Panic Buttons
- CCTV Security System
- Common Area Access Control by Smart Card
- Public Address System in Parking Areas
- Video Door Phone with connectivity to reception
- Best-in-class flooring in Living/Dining & Bedrooms
- Top Class vitrified tiles in the Kitchen and branded designer tiles in Bathrooms
- Premium quality anodized aluminium windows for all the rooms and glass railings for decks and balconies
- Provision for internet connectivity
- Bathroom and sanitary ware fittings from global brands, glass partitions in bathrooms between wet and dry areas



THOUGHTFULLY
DESIGNED
2 & 3 BHK
INSPIRED HOMES.



TYPICAL FLOOR PLAN



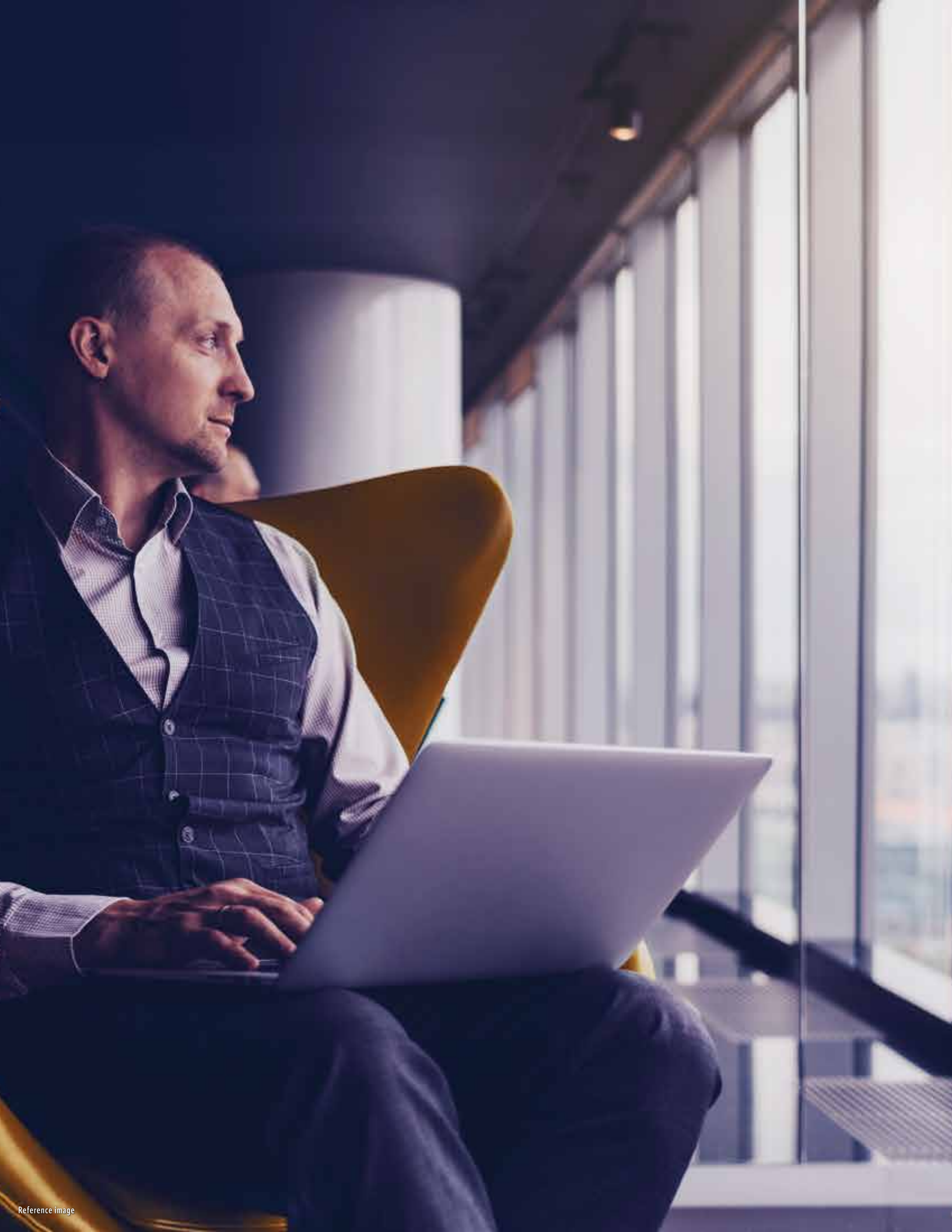
3 BHK LUXURY | RERA CARPET: 1122 SQ.FT



3 BHK ELEGANT | RERA CARPET: 977 SQ.FT



2 BHK | RERA CARPET: 750 SQ.FT



FOR BEST RETURNS, INVEST IN THE BEST.

Wadala offers something that's a rare find in our city. Space. Far away from the space constraints of Mumbai, Wadala flaunts its open spaces and tremendous possibility for development.

And what makes it even more alluring is its proximity to both BKC and Fort. Undeniable connectivity. It holds Mumbai's only Freeway and is one of the locations where the Metro and Monorail intersect.

This will enable multiple returns on the investment for its stakeholders. It is this potential that makes the upcoming urbanscape of Ajmera Manhattan a manifold investment.

With new developments underway, Wadala has become the nerve centre of Mumbai's economy. So the time to lay your roots down, is now.

A LEGACY BUILT ON TRUST.

Ajmera i-Land - Wadala, Mumbai

OC Received

One Kalyan - Shahad, Mumbai

A JV of Ajmera & Mehta Group

MAHARERA REG NO. P51700030210

Ajmera Heritage City, Khardi - Mumbai

MAHARERA REG NO. P51700011840

Ajmera Sikova - Ghatkopar, Mumbai

MAHARERA REG NO. P51800024066

Ajmera Arham - Malad, Mumbai

RERA REG NO. P51800030227

Ajmera Aria - Pune

OC Received

Ajmera Exotica - Wagholi, Pune

MAHARERA REG NO. P52100015618

Casa Vyoma, Ahmedabad

A JV of Ajmera & Sheetal Infra -

PHASE 1 - PR/GJ/ AHMEDABAD/AHMADABAD CITY/ AUDA / RAA00022/ 290817

PHASE 2 - PR/GJ/ AHMEDABAD/AHMADABAD CITY/ AUDA / RAA00015/ 280817

Ajmera Annex - Bangalore

Ajmera Annex Residential - PRM/KA/RERA/1251/310/PR/171014/000288

Ajmera Annex Commercial - PRM/KA/RERA/1251/310/PR/171014/000302

Ajmera Infinity - Bangalore

OC Received

Ajmera Lugaano - Bangalore

PRM/KA/RERA/1251/309/PR/180728/001945

Ajmera Nucleus - Bangalore

PRM/KA/RERA/1251/310/PR/181210/002207

Calico - London

Southhall Mens Working Club - London

The Mill House - London

King's Borough - London



Ajmera Lugaano



Ajmera Infinity



Ajmera i-Land



Casa Vyoma



Ajmera Nucleus



Ajmera Heritage City



One Kalyan



Ajmera Arham



Ajmera Sikova



Southhall Mens Working Club



Ajmera Aria



Ajmera Annex



Ajmera Exotica



Calico



King's Borough