

A Project By:



LAUNCHING NEW PROJECT

VEENA   
SOLACE

The Perfect Place To Live In

Daulat Nagar - Santacruz (West)



**“Veena Solace”** is a perfect embodiment of elegance, offering 2 & 3 BHK with 4 Apartments per floor, exclusivity makes room for sheer privacy and reinventing the concept of incredible interior.

We are delighted to introduce a dazzling luxury retreat that you would be elated to call your **“HOME”**.





VEENA SOLACE VEENA DEVELOPERS

TOMMY HILFIGER

GUCCI

Artistic Impression



# EASE OF CONNECTIVITY



## LOCATION ADVANTAGES

- Western Express Highway - 7 Min.
- Santacruz Railway Station - 10 Min.
- Airport - 12 Min.
- Bandra-Worli Sea Link - 20 Min.
- Bandra-Kurla Complex - 18 Min.
- Juhu Beach - 10 Min.

## Get The Best Access To Your Every Need, Fancy And Desire



AIRPORT



BUSINESS HUB



RECREATION



RETAIL & DESIGNER BOUTIQUES



LUXURY HOTELS



FINE DINING



Scan for Google Location

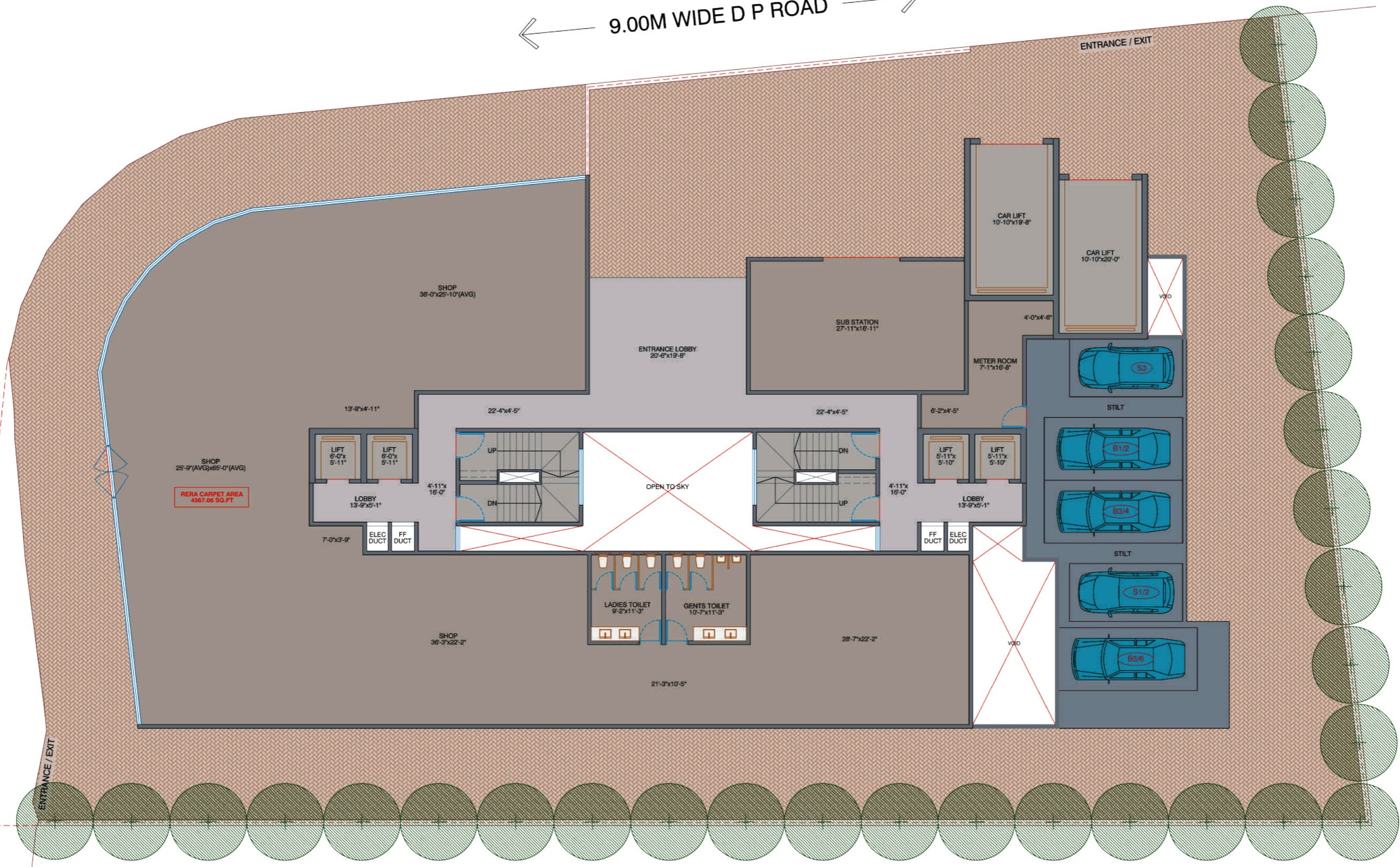
\*Distance in approx minutes



# TYPICAL FLOOR PLAN

9.00M WIDE D P ROAD

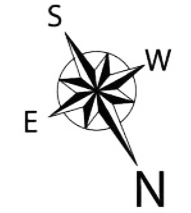
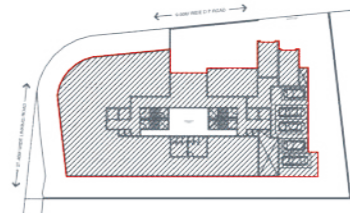
27.40M WIDE LINKING ROAD



**WING A**  
(B1+B2+G+8 FLOORS)

**WING B**  
(B1+B2+G+8 FLOORS)

## GROUND FLOOR PLAN





## 2 BHK ISOMETRIC VIEW



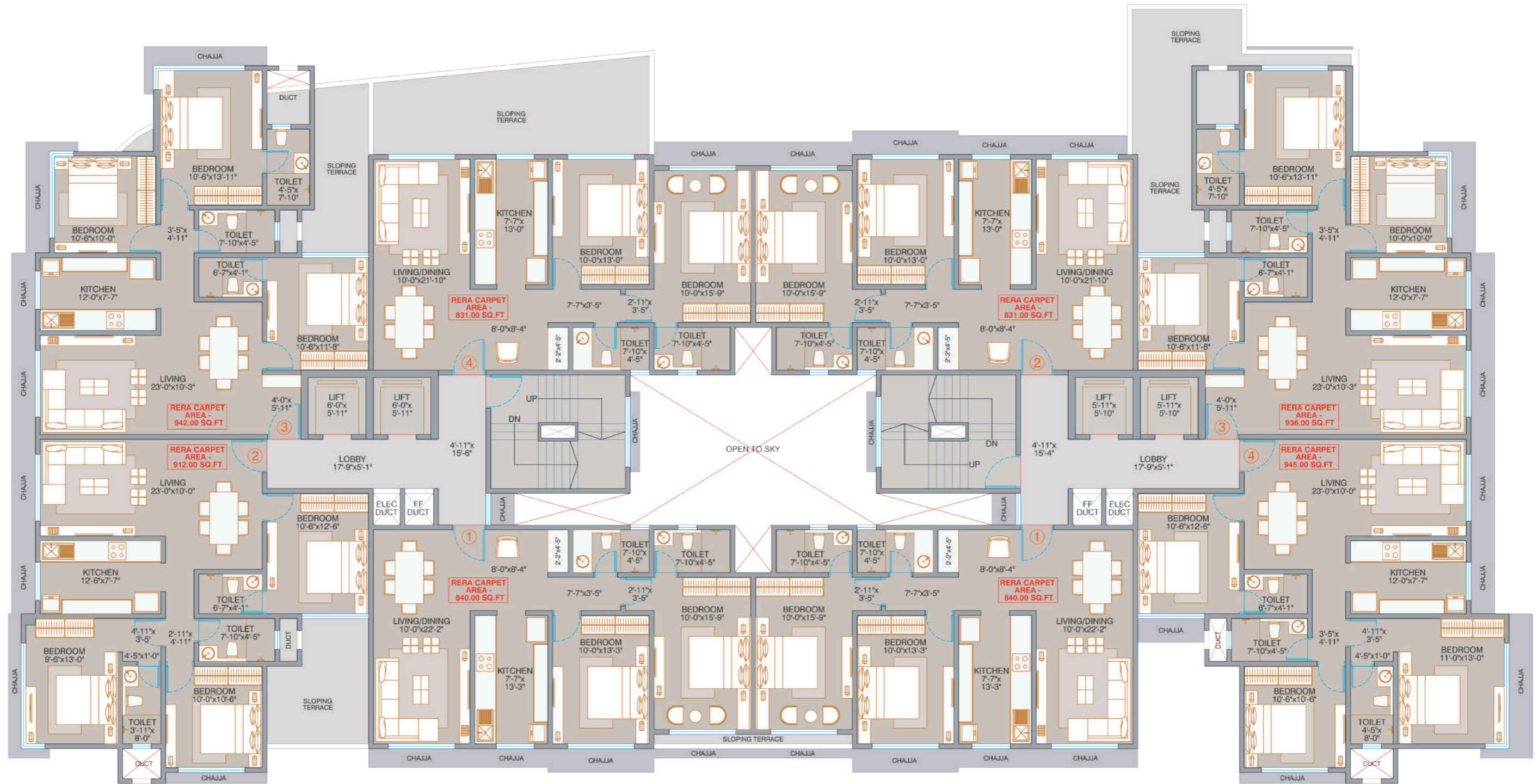


# 3 BHK ISOMETRIC VIEW





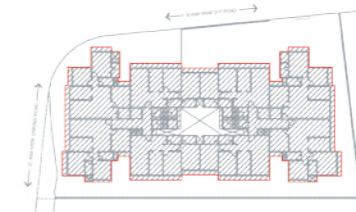
# TYPICAL FLOOR PLAN



**WING A**  
(B1+B2+G+8 FLOORS)

**WING B**  
(B1+B2+G+8 FLOORS)

## 1<sup>ST</sup> FLOOR PLAN





# TYPICAL FLOOR PLAN



**WING A**  
(B1+B2+G+8 FLOORS)

**WING B**  
(B1+B2+G+8 FLOORS)

## 2<sup>ND</sup>-8<sup>TH</sup> FLOOR

