



LAXMI
SHRUSHTI







Artist Impression View

Upgrade Your Living In The Most Elite Suburb Of Mumbai - Goregaon

Goregaon is an upscale neighbourhood in the western suburbs of Mumbai. It is very well connected to most of Mumbai. By investing in a home at Goregaon you get an all-around experience with the most happening lifestyle encounter. Finally get your dream home you were looking for.



LAXMI
SHRUSHTI



Vidya Vikas Universal College



GhanshyamDas Saraf College



D. G. Khetan International School



LifeLine Medicare Hospital



Laxmi Raajvilas



Veer Savarkar Goregaon Flyover



Raddison Hotel



SRL Diagnostics



Patkar College



Ambabai Mandir



Subway



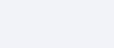
Goregaon Railway Station



Kapadia Multispeciality Hospital



City Centre Mall



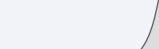
BMC



PVR Cinema



Goregaon Police Station



Laxmi Callista



Mrinal Gore Flyover



Chattrapati Shivaji Airport



Film City



Oshiwara Mall



Proposed MG Road Metro Station



D Mart



Narayana E Techno School



Azad Maidan



Police Quarter



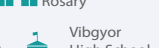
Filmistan Studio



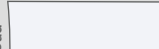
Picasso Restaurant



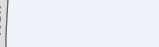
Parthana Hospital & ICU



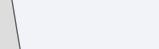
Church Of Our Lady Rosary



Vibgyor High School Goregaon



Shree Vasupujya Bhagwan Jain Temple



Metro Line - 2A



Metro Line - 2A



Metro Line - 2A



Metro Line - 2A



Western Express Hwy

Western Express Hwy

Western Express Hwy

Western Express Hwy

Western Express Hwy

Western Express Hwy

Western Express Hwy

Metro Line - 7

Metro Line - 7

Metro Line - 7

Metro Line - 7

Metro Line - 7

Metro Line - 7

Metro Line - 7

Metro Line - 7

Metro Line - 7

Metro Line - 7

Metro Line - 7

Metro Line - 7

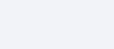
Metro Line - 7

Metro Line - 7

Oberoai Mall



The Westin Hotel



A Promising Location That Connects Dream To Reality

Amidst superb road, rail and upcoming metro connectivity with an easy access to all the necessary amenities for a luxurious life, this project is the perfect choice for your dream home.

Laxmi Shrushti is well connected with the supermarkets, hospitals, schools, parks and more to reveal your vicinity.

Location

COLLEGES

- Saraf College - S.V. Road Malad (West)
- Dalmia College - Malad (West)
- Patkar College - S.V Road Goregaon (West)
- Sanskardham College - Teen Dongri Goregaon (West)
- Vivek College - Goregaon (West)
- Lords College - Goregaon (West)
- 10+ More Colleges

SCHOOLS

- Vibgyor School - Goregaon (West)
- St. John's Universal High School
- St. Thomas High School - MG Road
- Bajaj School (Group of School)
- D.G. Khetan Malad (West)
- Witty International School Malad (West)

RESTAURANT / HOTELS

- Radisson Mumbai - Goregaon (West)
- The Westin Mumbai Garden City - Goregaon (East)
- Ratna Restaurant - Goregaon (West)

HOSPITALS

- Life Line Medical Hospital - DLH Park S. V Road Malad (West)
- Kapadia Nursing Homes - M.G. Road Goregaon (West)
- Dhirubhai Kokilaben Ambani Hospital
- Jain Hospital Goregaon (West)
- 60+ Private Nursing Home and Hospital

MALLS

- Inorbit Mall Link Road Malad (West)
- Infinity Mall Malad (West)
- Hypercity Mall Malad (West)
- Oberoi Mall Goregaon (East)
- City Centre Mall Goregaon (West)
- D-Mart Goregaon (West)

SPORTS & FITNESS

- Goregaon Sports Club Malad (West)

HOSPITALS & DIAGNOSTIC

- SRL Diagnostics Goregaon (West)

Lifestyle Amenities



This exquisite building complex comes equipped with all imaginable luxurious amenities that make life a delightful experience. It is an exact living place for the professionals of the next generation as it includes all the facilities they want.



Nana Nani Sitting Area



Kids' Play Area



Multi-Purpose Court



Garden Area



Fully Equipped Gym



Indoor Games



Walking Track



Yoga Pavilion



Artist Impression View



Podium



Artist Impression View



Terrace



Artist Impression View

Tower Facility



The exquisite residential tower comes equipped with all imaginable amenities that make life a delightful experience. It is an exact living place for the professionals of the next generation as it includes all the facilities they want.



Double Heighted Entrance Lobby



CCTV Surveillance



Solar Panel



Video Door Phone (VDP) With Intercom Facility
From Lobby To Apartment



Lift Upto Terrace Floor



Energy Saving Sensor's Light In All Floor Lobby

Internal Amenities



- Anodized Aluminium Windows.
- Solid Fire Rated Flush Door Shutter Both Side Laminate Finish For Main Door.
- Vitrified Tile Flooring In Full Flat
- Acrylic/Plastic Paint With Gypsum Finish Walls
- Bathroom Dado Up To Door Height
- Kohler Branded Cp Fittings And Sanitary Ware
- Provision For Water Purifier
- Polished Granite Kitchen Platforms With Stain Less Steel Sink Single Bowl
- Dado Tiles Upto Door Height Above Kitchen Platform

Typical Floor Plan

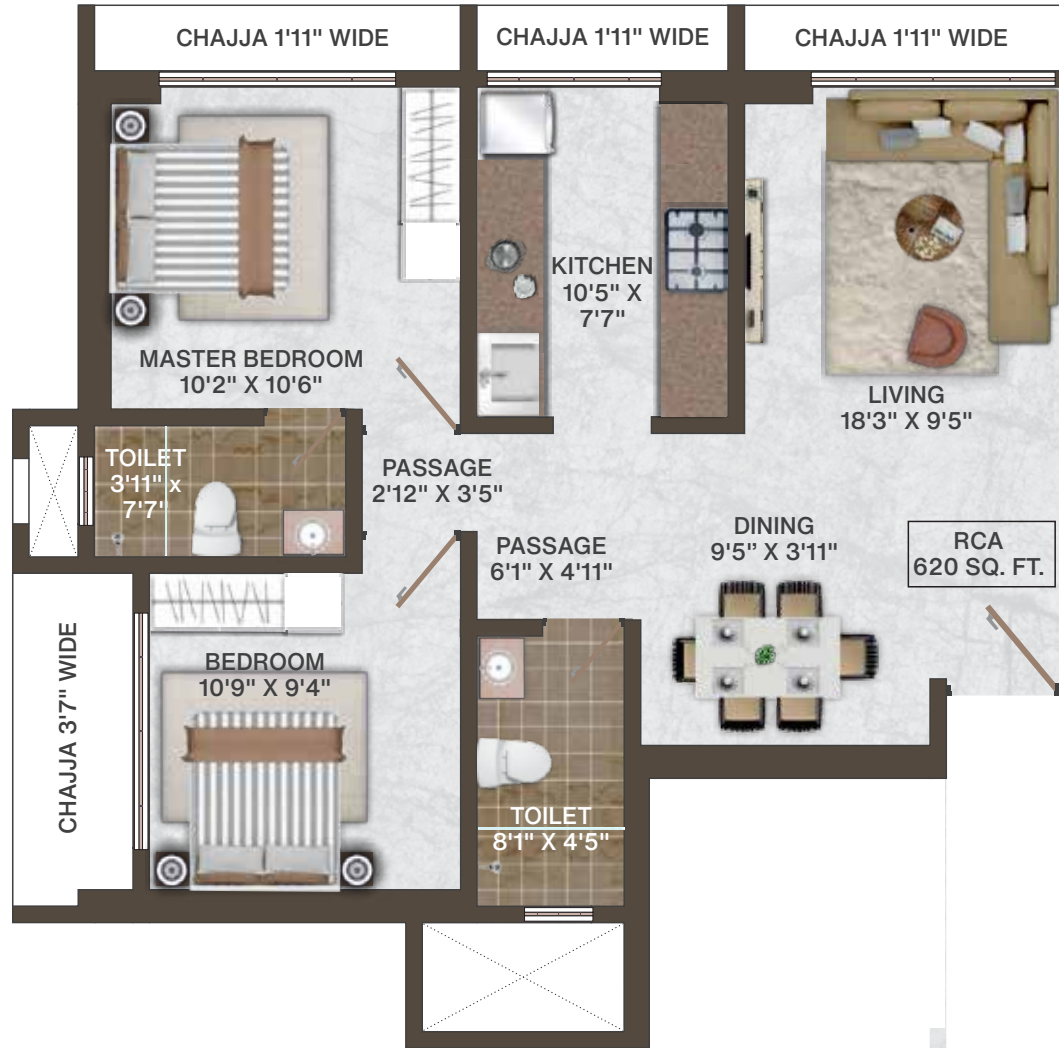


Disclaimer: The plans, designs, and dimensions are as per current sanctioned plans and approvals. Specifications, amenities, and facilities will be as set out in the agreement for sale as uploaded on the RERA website (<https://maharera.mahaonline.gov.in>) under Registration No. P51800030965. The same may be subject to modification/change/revision/alteration in terms of approvals, orders, directions and/or regulations of the concerned/relevant authorities, and/or for compliance with laws/regulations in force from time to time and/or in line with our customer policies. We may modify/alter the above by following due procedure as prescribed under the Real Estate (Regulation and Development) Act, 2016, ("RERA") read with the provisions of the Maharashtra Real Estate (Regulation and Development) (Registration of real estate projects, Registration of real estate agents, rates of interest and disclosures on website) Rules, 2017 and the Rules and Regulations framed under RERA for Maharashtra ("RERA Rules").

Unit Plan - 1



2 BHK - RCA - 620 sq.ft.

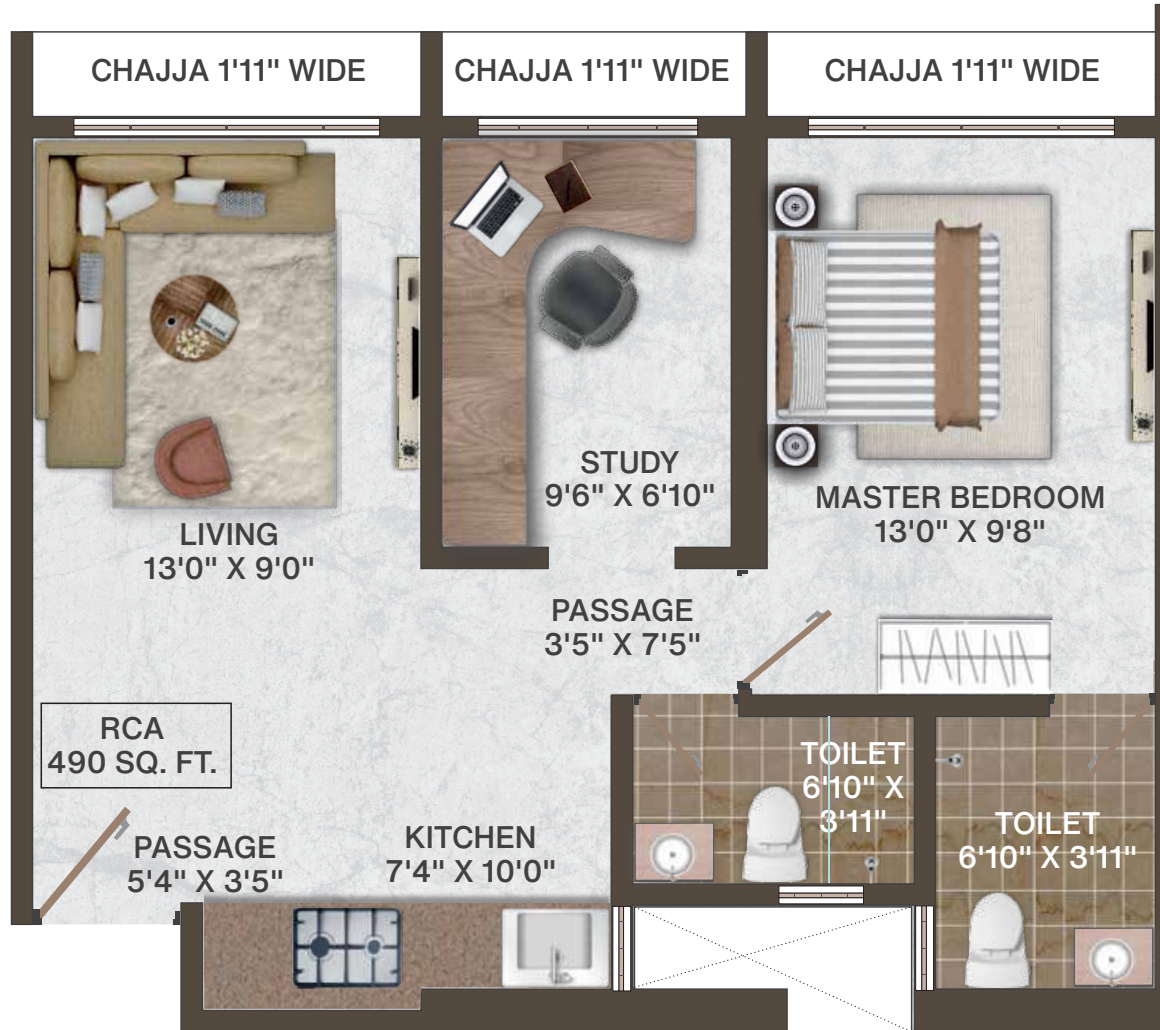


Disclaimer: The plans, designs, and dimensions are as per current sanctioned plans and approvals. Specifications, amenities, and facilities will be as set out in the agreement for sale as uploaded on the RERA website (<https://maharera.mahaonline.gov.in>) under Registration No. P51800030965. The same may be subject to modification/change/revision/alteration in terms of approvals, orders, directions and/or regulations of the concerned/relevant authorities, and/or for compliance with laws/regulations in force from time to time and/or in line with our customer policies. We may modify/alter the above by following due procedure as prescribed under the Real Estate (Regulation and Development) Act, 2016, ("RERA") read with the provisions of the Maharashtra Real Estate (Regulation and Development) (Registration of real estate projects, Registration of real estate agents, rates of interest and disclosures on website) Rules, 2017 and the Rules and Regulations framed under RERA for Maharashtra ("RERA Rules").

Unit Plan - 2



1.5 BHK - RCA - 490 sq.ft.

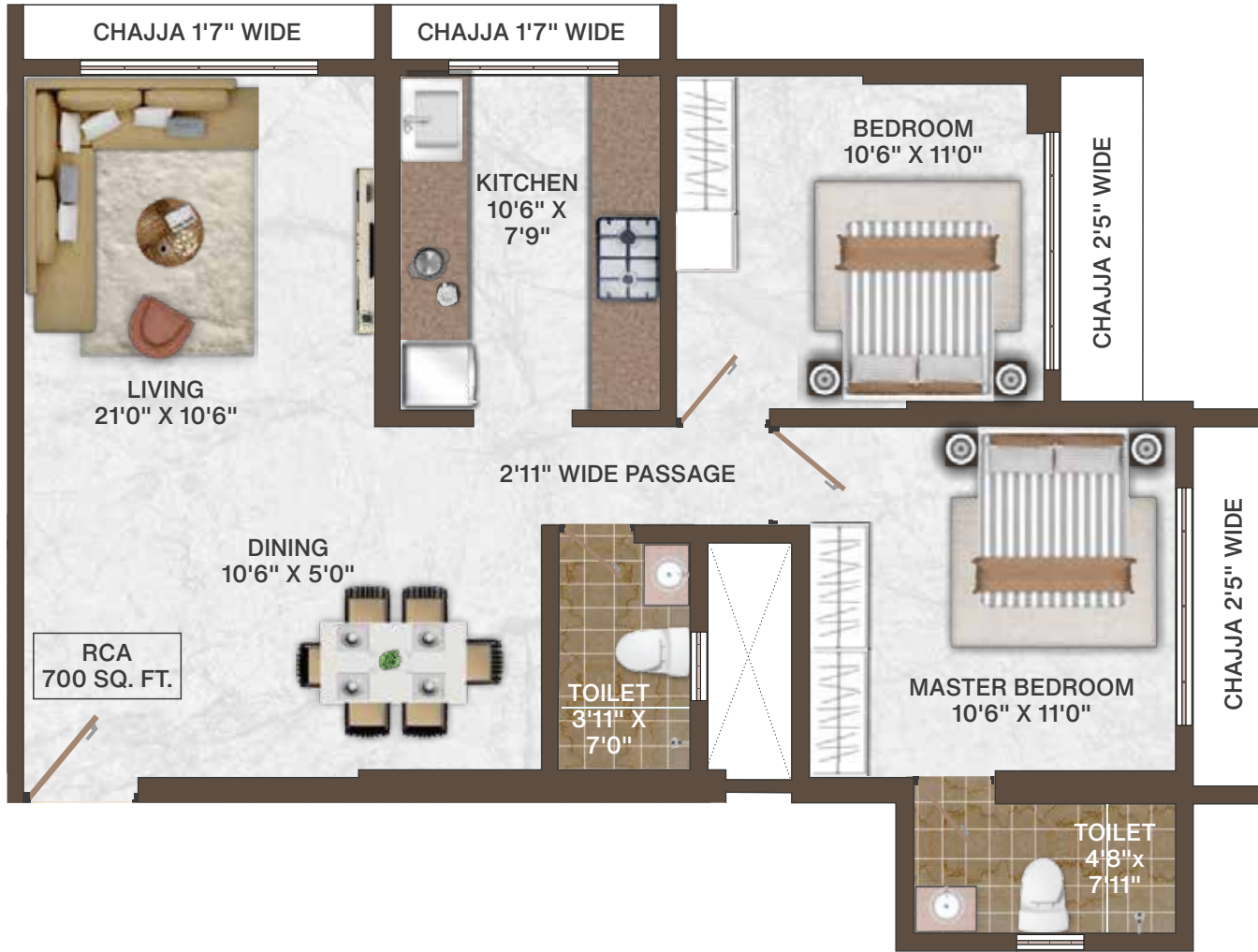


Disclaimer: The plans, designs, and dimensions are as per current sanctioned plans and approvals. Specifications, amenities, and facilities will be as set out in the agreement for sale as uploaded on the RERA website (<https://maharera.mahaonline.gov.in>) under Registration No. P51800030965. The same may be subject to modification/change/revision/alteration in terms of approvals, orders, directions and/or regulations of the concerned/relevant authorities, and/or for compliance with laws/regulations in force from time to time and/or in line with our customer policies. We may modify/alter the above by following due procedure as prescribed under the Real Estate (Regulation and Development) Act, 2016, ("RERA") read with the provisions of the Maharashtra Real Estate (Regulation and Development) (Registration of real estate projects, Registration of real estate agents, rates of interest and disclosures on website) Rules, 2017 and the Rules and Regulations framed under RERA for Maharashtra ("RERA Rules").

Unit Plan - 3



2 BHK - RCA - 700 sq.ft.



Disclaimer: The plans, designs, and dimensions are as per current sanctioned plans and approvals. Specifications, amenities, and facilities will be as set out in the agreement for sale as uploaded on the RERA website (<https://maharera.mahaonline.gov.in>) under Registration No. P51800030965. The same may be subject to modification/change/revision/alteration in terms of approvals, orders, directions and/or regulations of the concerned/relevant authorities, and/or for compliance with laws/regulations in force from time to time and/or in line with our customer policies. We may modify/alter the above by following due procedure as prescribed under the Real Estate (Regulation and Development) Act, 2016, ("RERA") read with the provisions of the Maharashtra Real Estate (Regulation and Development) (Registration of real estate projects, Registration of real estate agents, rates of interest and disclosures on website) Rules, 2017 and the Rules and Regulations framed under RERA for Maharashtra ("RERA Rules").

Unit Plan - 4



2 BHK - RCA - 670 sq.ft.

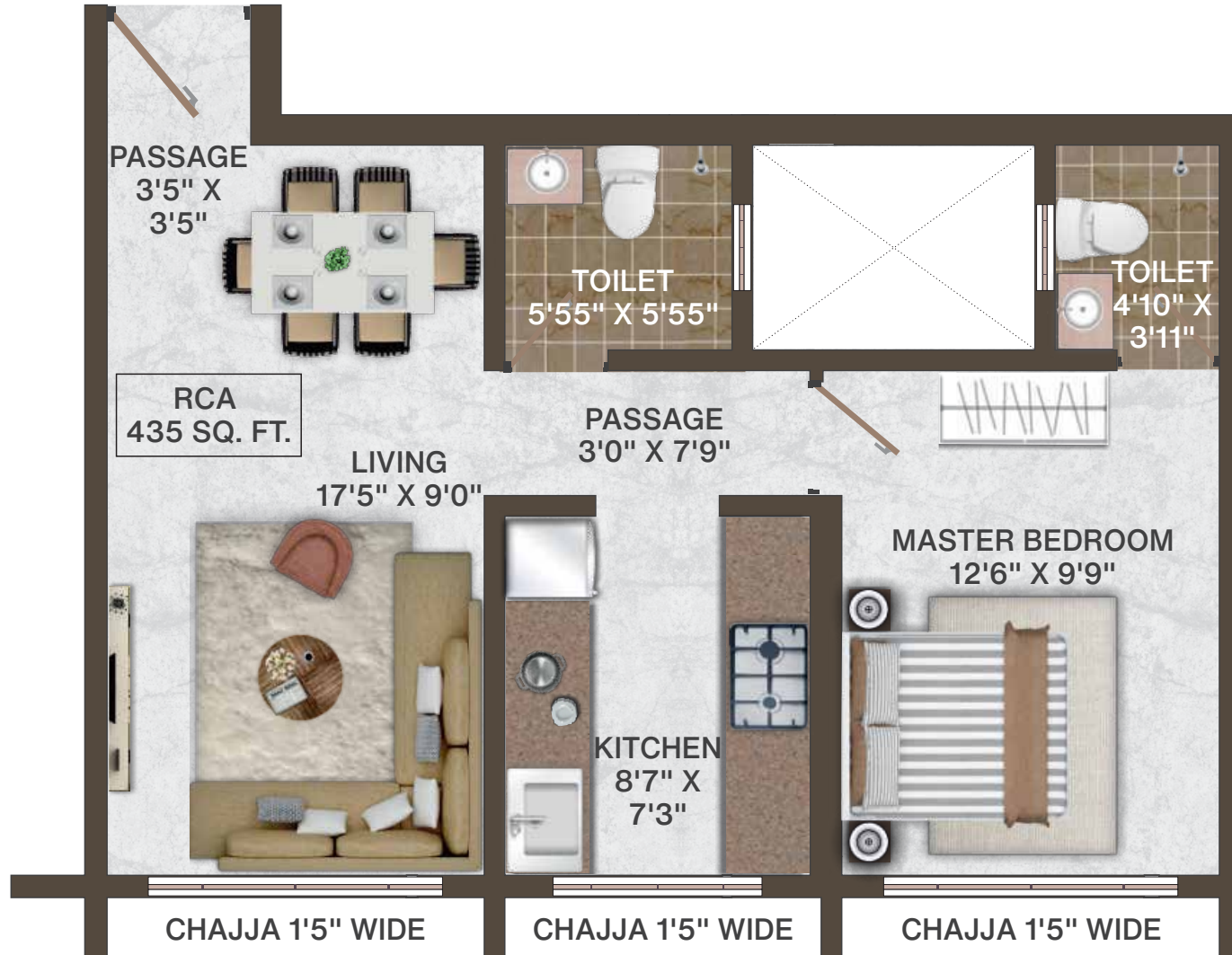


Disclaimer: The plans, designs, and dimensions are as per current sanctioned plans and approvals. Specifications, amenities, and facilities will be as set out in the agreement for sale as uploaded on the RERA website (<https://maharera.mahaonline.gov.in>) under Registration No. P51800030965. The same may be subject to modification/change/revision/alteration in terms of approvals, orders, directions and/or regulations of the concerned/relevant authorities, and/or for compliance with laws/regulations in force from time to time and/or in line with our customer policies. We may modify/alter the above by following due procedure as prescribed under the Real Estate (Regulation and Development) Act, 2016, ("RERA") read with the provisions of the Maharashtra Real Estate (Regulation and Development) (Registration of real estate projects, Registration of real estate agents, rates of interest and disclosures on website) Rules, 2017 and the Rules and Regulations framed under RERA for Maharashtra ("RERA Rules").

Unit Plan - 5



1 BHK - RCA - 435 sq.ft.

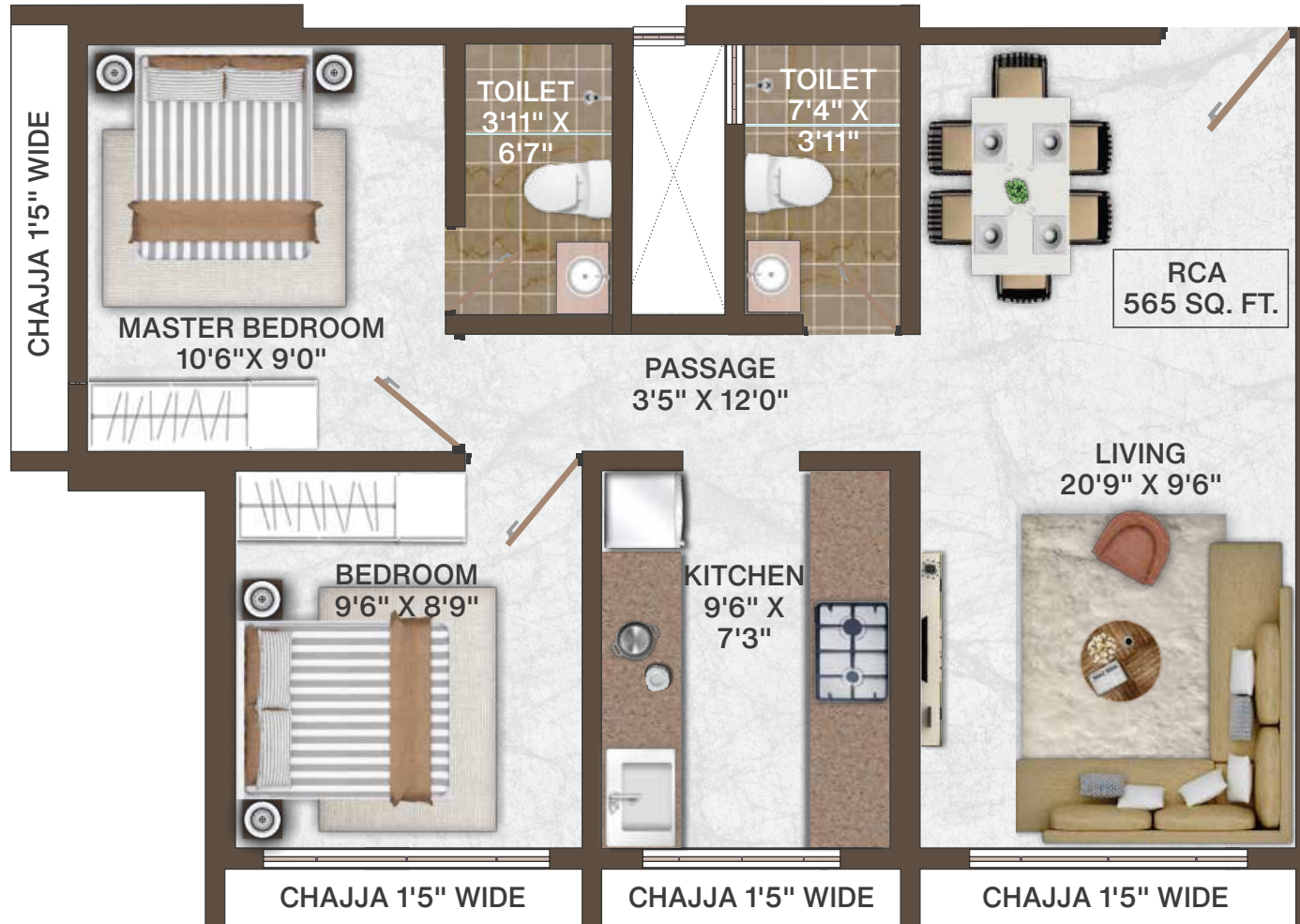


Disclaimer: The plans, designs, and dimensions are as per current sanctioned plans and approvals. Specifications, amenities, and facilities will be as set out in the agreement for sale as uploaded on the RERA website (<https://maharera.mahaonline.gov.in>) under Registration No. P51800030965. The same may be subject to modification/change/revision/alteration in terms of approvals, orders, directions and/or regulations of the concerned/relevant authorities, and/or for compliance with laws/regulations in force from time to time and/or in line with our customer policies. We may modify/alter the above by following due procedure as prescribed under the Real Estate (Regulation and Development) Act, 2016, ("RERA") read with the provisions of the Maharashtra Real Estate (Regulation and Development) (Registration of real estate projects, Registration of real estate agents, rates of interest and disclosures on website) Rules, 2017 and the Rules and Regulations framed under RERA for Maharashtra ("RERA Rules").

Unit Plan - 6



2 BHK - RCA - 565 sq.ft.



Disclaimer: The plans, designs, and dimensions are as per current sanctioned plans and approvals. Specifications, amenities, and facilities will be as set out in the agreement for sale as uploaded on the RERA website (<https://maharera.mahaonline.gov.in>) under Registration No. P51800030965. The same may be subject to modification/change/revision/alteration in terms of approvals, orders, directions and/or regulations of the concerned/relevant authorities, and/or for compliance with laws/regulations in force from time to time and/or in line with our customer policies. We may modify/alter the above by following due procedure as prescribed under the Real Estate (Regulation and Development) Act, 2016, ("RERA") read with the provisions of the Maharashtra Real Estate (Regulation and Development) (Registration of real estate projects, Registration of real estate agents, rates of interest and disclosures on website) Rules, 2017 and the Rules and Regulations framed under RERA for Maharashtra ("RERA Rules").

THE LAXMI GROUP

PASSION FOR EXCELLENCE

Passion For Excellence

The Laxmi Group is an emerging real estate company with an established track record of constructing around more than 7,25,000 sq. ft, in a short span. Projects with about 15,00,000 sq. ft. of development area are under various stages of execution and are expected to be delivered over the next 5-7 years.

The group has achieved expertise in the execution of complex redevelopment projects in a timely manner through a deep understanding of laws and meticulous planning, Catering to the needs of all stakeholders Customers. Tenants, Vendors. Employees & Channel Partners who have helped the group create a niche for itself in the dynamic and ever-evolving industry.

Landmarks Delivered In The Last Decade



CHAMUNDA JEWEL
Yashwant Nagar, Goregaon(west)



LAXMI CALLISTA
Jawahar Nagar, Goregaon(west)



SAMARTH SHRUSHTI
M.G. Road, Goregaon(west)



LAXMI ENCLAVE
Nadiadwala Colony, Malad(west)



LAXMI VILLA
Jawahar Nagar, Goregaon(west)



LAXMI HEIGHTS
Jawahar Nagar, Goregaon(west)

Other Ongoing Projects

The Laxmi Group has always been efficient with its work with a team of professionals, always imprinting its mark. We are proud to work on a huge number of ongoing large scale projects with the same dedication and efforts and reach up to the expectations of all the customers.



SHANTI HEIGHTS
Ghoshala Road (Mulund West)



LAXMI ETERNITY
Jawahar Nagar (Goregaon West)



LAXMI SANSKRUTI
Jawahar Nagar (Goregaon West)



LAXMI ANNEX
Jawahar Nagar (Goregaon West)



LAXMI RAAJVILAS
Mulund Link Road (Malad West)



A Fresh Start For A Family!

The idea behind Laxmi Shrushti is to gift you and your family a community that will be a part and parcel of your life. Home of a personal haven where one can notch up the highest level of comfort in the best possible way.



Artist Impression View