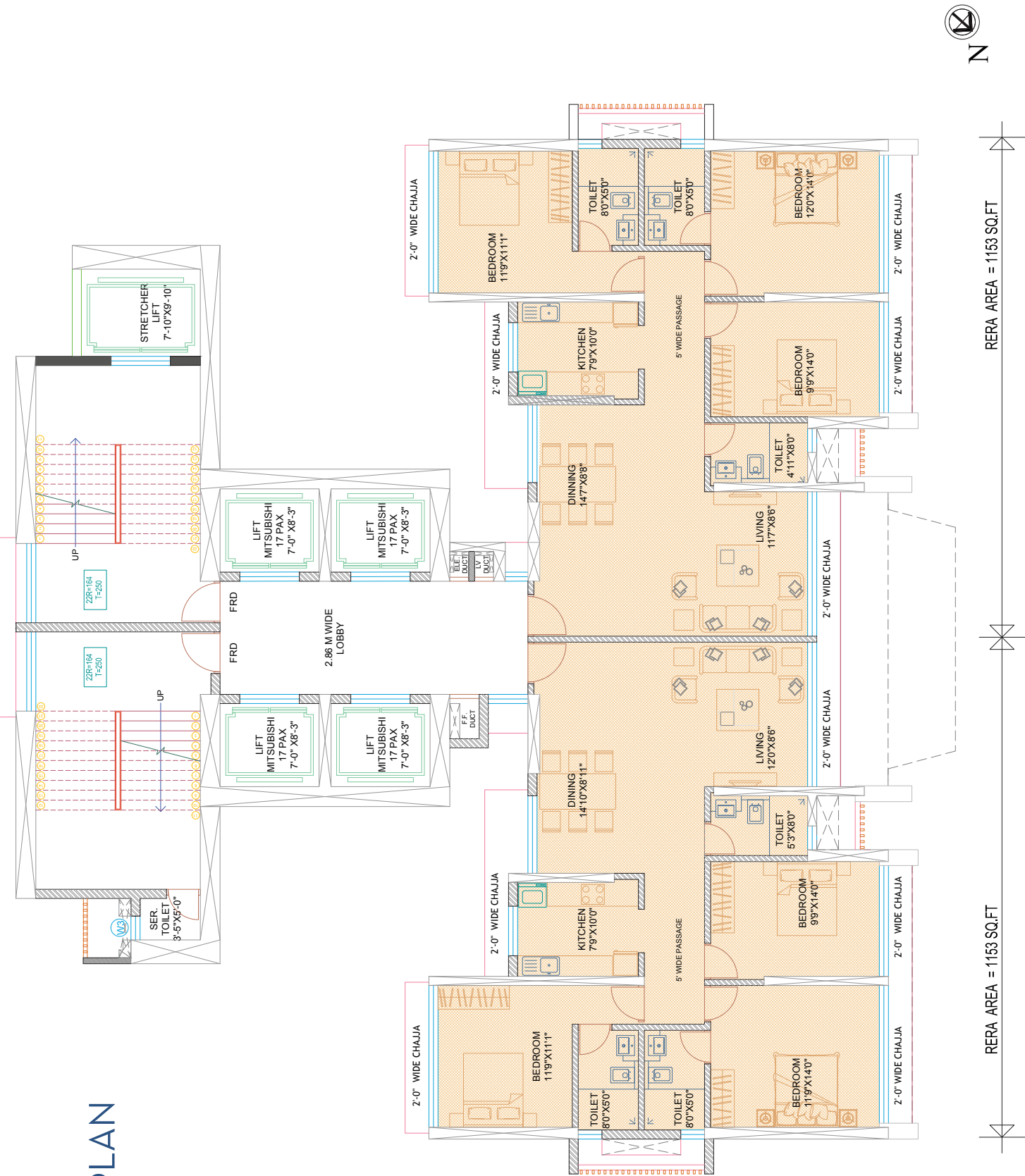


TYPICAL FLOOR PLAN



RERA AREA = 1153 SQ.FT

RERA AREA = 1153 SQ.FT



Disclaimer: We have taken utmost care while measuring the distance to the nearest. However the same may vary with actual measurement.

SURAJ. ONE NAME YOU CAN BE SURE OF.



Over 30+ years of understanding in creation, design and construction.



Deeply rooted in Dadar-Mahim Prabhadevi locale.



36+ projects delivered across residential and commercial segments.



Over 10 lakhs sq. ft. of space meticulously executed in prime locales.

Partners & Associates: **Design Architect:** M/s Sanjay Puri Architects | **Liasoning Architect:** Archvision Architects
Structural Consultant: Dr. Kelkar Designs Pvt. Ltd. | **MEP Consultant:** Electro-Mech Consultants Pvt. Ltd.
Construction Partner: Arabian Construction Company | **Solicitors:** M/s Little & Co.



SURAJ

Suraj Estate Developers Pvt. Ltd.
 Corporate Office: Aman Chambers, 3rd Floor, Century Bazaar, Prabhadevi, Mumbai, Maharashtra 400025
 Site Address: 27, Kashinath Dhuru Marg, Prabhadevi, Mumbai, Maharashtra 400025
 For enquiries, Call at 22 6195 0000 | +91 75067 87148 or email at sales@surajestate.com
 MahaRERA No.: P51900007257 | www.oceanstarbysuraj.com | www.surajestate.com

Disclaimer: The information in this folder is indicative of the kind of development that is proposed. Subject to the approval of the authorities or in the interest of counting improvement, the developers reserve the rights to change the layouts, plans, specifications or features without prior notice or obligations. The amenities shown inside the brochure are purely indicative. Only content in text presents the actual amenities. Images shown in this ad are for representation purpose only.



Ocean Star
by SURAJ

Presenting



Ocean Star
by SURAJ

MAHA RERA NUMBER - P51900007257



Ocean Star, a standalone tower at Prabhadevi, is one-of-its-kind. Nestled in a quiet corner of Prabhadevi, Ocean Star offers its residents with a vibrant lifestyle steeped in utter serenity. Each apartment offers endless views of the Arabian Sea and Worli Sea-Link. Our luxury homes, provide you with an extravagant lifestyle at extraordinarily low maintenance costs.

Lavished with a whopping carpet area of 1153 sq. ft., extensive floor-to-ceiling height and well-appointed fittings and fixtures, every 3 BHK apartment is thoughtfully designed to offer you utmost comfort and a sense of magnificence, while securing your need to live in a private and gated address. All apartments at Ocean Star are purely Vastu Compliant; creating a blissful aura of warmth and positivity.

MAGNIFICENT VIEWS OF ARABIAN SEA, WORLI SEA LINK AND SIDDHIVINAYAK TEMPLE



THOUGHTFULLY DESIGNED RESIDENCES WITH WHOPPING 11.8 FEET FLOOR-TO-CEILING HEIGHT



PRIVATE SUN DECK OVERLOOKING COSMIC HORIZONS



YOUR PRIVILEGED ADDRESS, AT A DREAM LOCATION - 'PRABHADEVI'

Although Ocean Star is situated at a secluded and hushed locale of Prabhadevi, it boasts all the features of a vibrant neighbourhood. With Siddhivinayak Temple on the South and the Arabian Sea on the West, Ocean Star accords a blissful life. The vicinage provides ultimate convenience for the residents with essentials including schools, colleges, hospitals, shopping centres, fine dine restaurants, sports clubs, malls and local markets.

INTERNAL AMENITIES

Taking your living experience to the next level



- Italian Marble flooring in the living room, passages and master bedroom
- Vitrified tiles for kitchen, children's room, guest bedroom and all bathrooms
- CP fittings of Grohe or equivalent
- Sanitary fittings of TOTO / Duravit / Kohler or equivalent
- Premium quality Granite Kitchen Platform fitted with SS type Franke sink of equivalent make
- Teak wood frame doors with both sides veneer and melamine finish
- Windows - Premium aluminium windows with anodized / power coated finish and black granite / marble sills

WINDOWS

MITSUBISHI HIGH SPEED LIFTS

STP SEWAGE TREATMENT PLANT

ELECTRICAL BUS DUCT SYSTEM

RAINWATER HARVESTING

GEBERIT SINGLE STACK DRAINAGE SYSTEM

SECURITY
FEATURES

24 hours security

Fire fighting system

Videophone facility
interconnecting all flats

Security cabin

CONSTRUCTION PARTNERS:



THIS PROJECT IS FUNDED BY

TATA CAPITAL
HOUSING FINANCE LIMITED

Home loans are brought to you by
Tata Capital Housing Finance Limited and are at their sole discretion.
Terms and conditions apply.

ALSO APPROVED BY LEADING BANKS
AND FINANCIAL INSTITUTIONS

