



KCD JOGESH EVA



A Class In Its Own



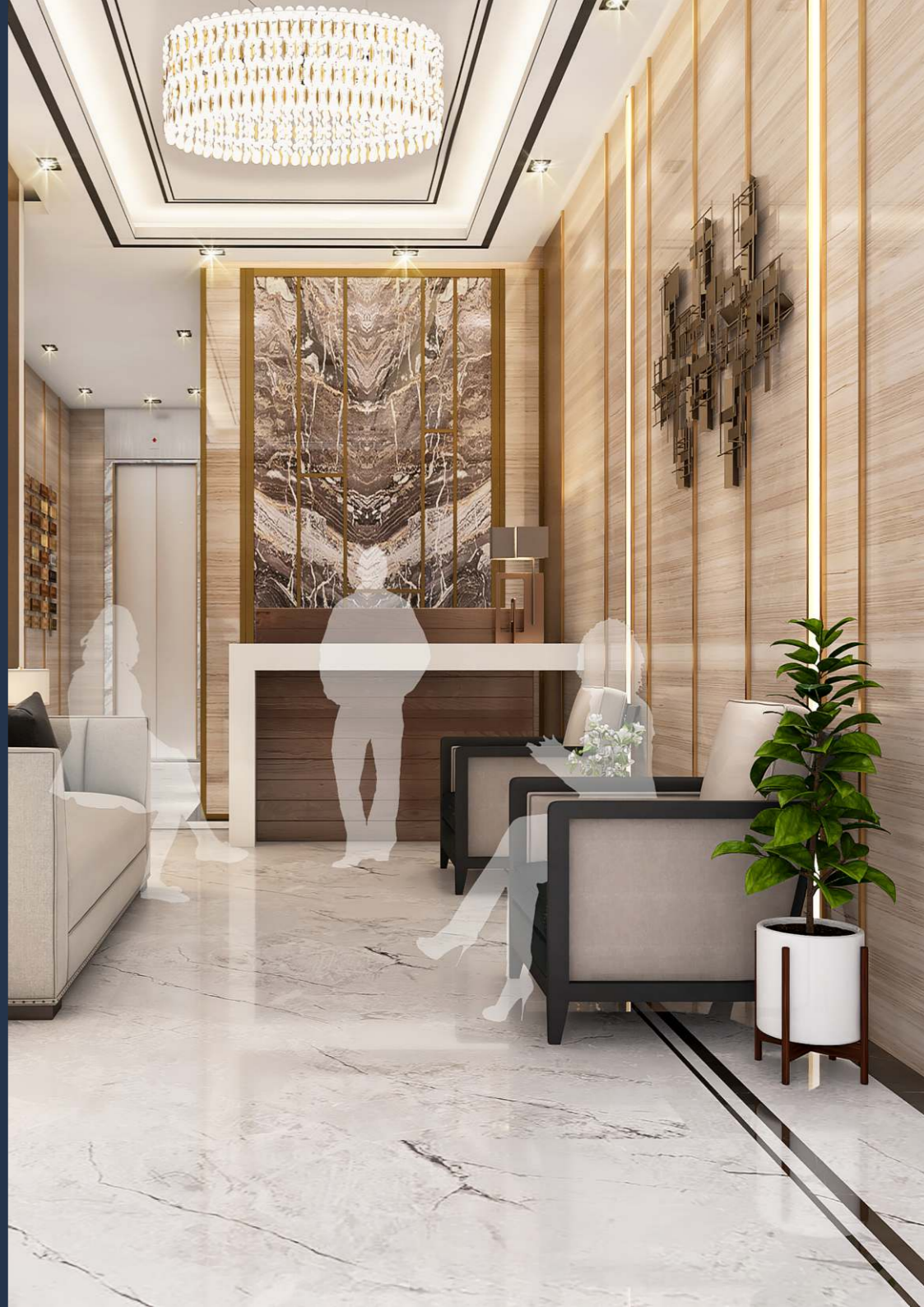


A FUSION OF VISION & AESTHETICS

Thoughtfully crafted & perfectly detailed with a vision to redefine immaculate design & modern architecture KCD JOGESH EVA is the new archetype of urban living with modern architecture of 14 storey tower located in jogeshwari east. Nestled cement its status benchmark for luxury residential architecture rooted in indian ethos. Offering voluminous apartments, swish amenities & the luxury of absolute exclusivity, the residences will showcase a brand new Luxury Norm for the discerning buyers.

EXTRAVAGANCE ENTRANCE LOBBY

Your home is where we add this luxurious entrance lobby is entirely yours to accoutre with your personal sense of bespoke design. Lavishly designed entrance lobby with modern design, Lighting & seating for security guards.





A SINGULARITY IN ARCHITECTURE

The Little details make the biggest difference. Jogesh Eva urban family residences provide privacy & space for all your family members making it a dream abode for your growing family. The carefully drafted details of your apartment are planned with our experts to suite your needs & lifestyle to ensure you make the most of life. Earthquake resistance structure with aesthetically designed exterior elevation premeditated by experts & renewed architects.

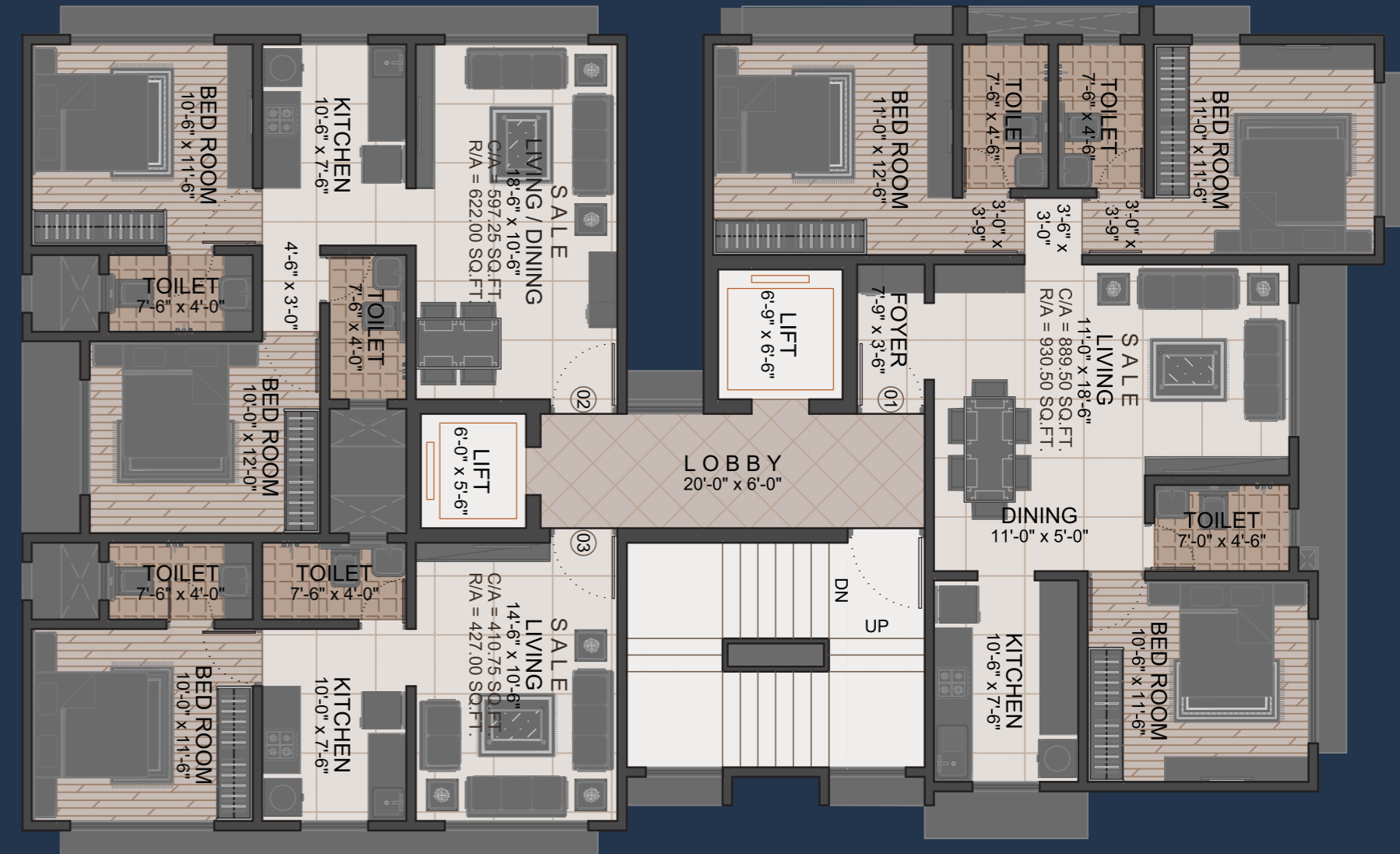
A DESIGN FOR LIFETIME

KCD JOGESH EVA architecture & design boasts comfortable living spaces with modern & upscale interiors planned by finest experts for 1,2 & 3 BHK apartments. KCD Jogesh Eva vision has been brought to life with the most resourcefully designed luxurious residences with lavish, dining & Kitchen spaces.



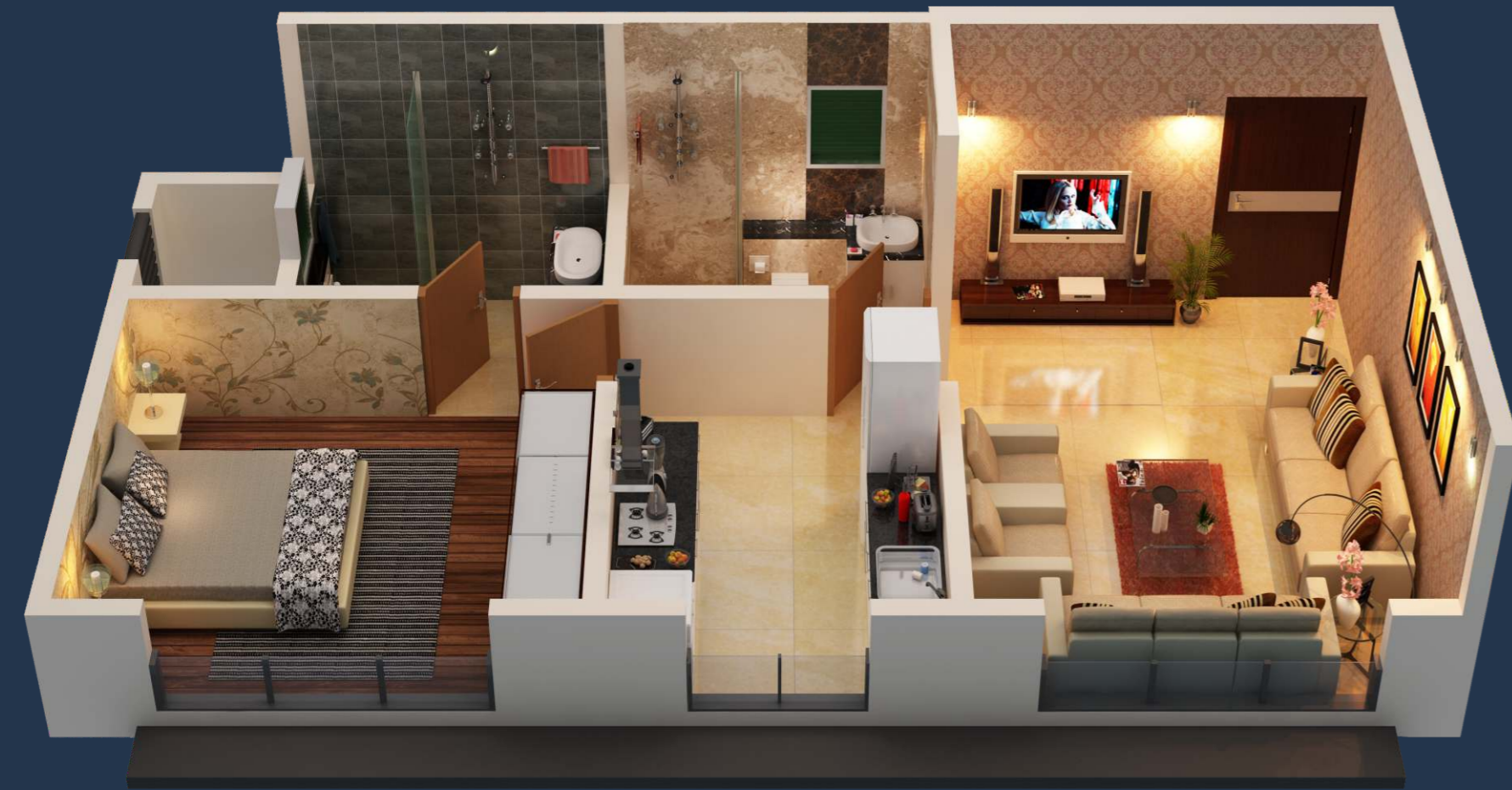


FIFTH TO SEVENTH FLOOR PLAN



NINTH TO FOURTEENTH FLOOR PLAN





1 BHK - 427 SQFT RERA CARPET AREA



2 BHK - 622 SQFT RERA CARPET AREA





3 BHK - 930 SQFT RERA CARPET AREA



BIRD EYE VIEW

A bird's eye view is an elevated view of an object from above, The 14 storey high with terrace garden gives the panoramic view of jogeshwari.



A DESIGN FOR LIFETIME

KCD JOGESH EVA architecture & design boasts comfortable living spaces with modern & upscale interiors planned by finest experts for 1,2 & 3 BHK apartments. KCD Jogesh Eva vision has been brought to life with the most resourcefully designed kuxurious residences with lavish, dining & Kitchen spaces.



SOCIETY CONVINIENCE

Every society required a well maintained office to manage its requirements. We have planned a well equipped society office along with an library to cherish your reading habit.



MAKE THE MOST OF YOUR COMFORTS

Water harvesting & water pumping control system.

Equipped gymnasium

2 renounced elevator with generator backup.

Stilt car parking

CCTV cameras in common areas



IT'S A PLACE WHERE
YOUR HEART IS

This ensures that KCD JOGESHEVA'S
apartments are exactly what they are
meant to be designed for life you
deserve



EXQUISITE PLANNING

KCD Jogesh Eva is planned & designed to fulfill all your space utilities. We proper team planning 1,2, & 3 Bhk flats are planned with adequate area optimisation.



LOCATION MAP



MAKE THE MOST OF YOUR TIME (LOCATIONS)

Temples located within 0.5 km

Hospitals sited within 0.3 km

International Airport 6.5 km

Jogeshwari Railway station 0.5 km

ICICI Bank 0.6 km

Shopping Mall – 4.5 km

Western Express Highway – 01 km

Schools & Colleges - 0.2 km