

Trust, quality, customer satisfaction, and goodwill are values that are today synonymous with the Rishabraj brand. With Mr. Harrishkumar Jain at the helm of the company, the group has succeeded in translating millions of wishes into reality. The earnest dedication and rising momentum of the company has resulted in the group setting new yardsticks in the redevelopment niche. With glowing testimonials from 1000 + ecstatic families spread over 1 million sq.ft of premium living space happily under its belt, the Group continues to carry forward its never ending passion for excellence with 1.5+ million sq. ft under various stages of planning & construction.

In the city of Mumbai most projects are in dire need of revamping or construction work on booked projects is stalled. This shatters the precious dream of millions who wish to live the ultimate life in this city of dreams.

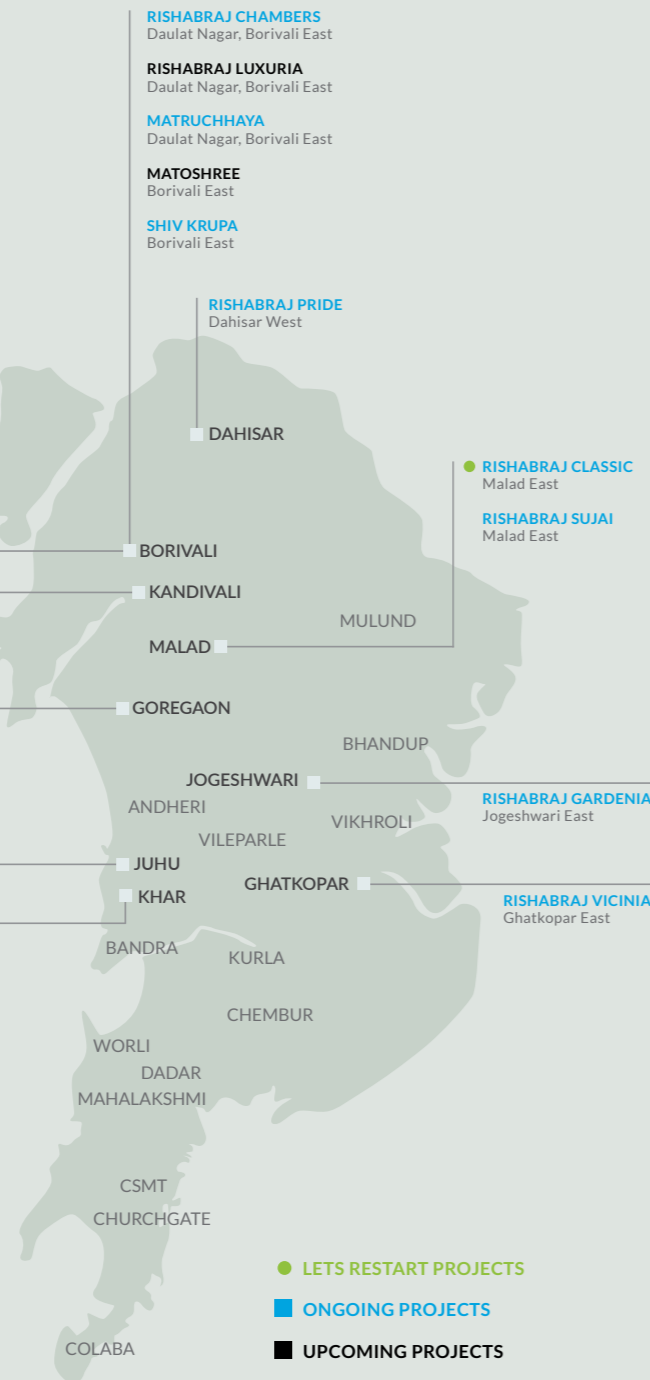
Is there no respite in sight for such scenarios? Is there a possibility of a saviour emerging from the very belly of this magnificent city to help fix this huge problem? Well, the answer is a resounding Yes!

The innovative genius of H Rishabraj gave birth to a revolutionary brand in the year 2020. We are Let's Restart and Welcome to the ultimate solution provider for delayed construction projects.

OUR PRESENCE

- **RISHABRAJ SURAJ**
Shimpoli, Borivali West
- **RISHABRAJ RAMESHWAR**
Shimpoli, Borivali West
- **RISHABRAJ ASHISH**
Shimpoli, Borivali West
- **RISHABRAJ AGNEL**
IC Colony, Borivali West
- **RISHABRAJ MONALISA**
IC Colony, Borivali West
- **RISHABRAJ PHOENIX**
Devidas lane, Borivali West
- **RISHABRAJ PARK VISTAS**
Shimpoli, Borivali West
- **RISHABRAJ SAFFRON PEACE**
IC Colony, Borivali West
- **RISHABRAJ VILLA STELLA**
IC Colony, Borivali West
- **RISHABRAJ PERCY**
IC Colony, Borivali West

- **RISHABRAJ SAMAJ DARSHAN**
Kandivali West
- **RISHABRAJ VATSAL**
Kandivali West
- **63 GMA**
Goregaon West
- **RISHABRAJ TRIDENT**
Juhu
- **52 PARK AVENUE**
Khar West
- **BLUE LOTUS**
Khar West



- **LETS RESTART PROJECTS**
- **ONGOING PROJECTS**
- **UPCOMING PROJECTS**



RISHABRAJ Gardenia
Site Address : Aakash Darshan Co-op Hsg Society, Road Number 1, Hindu Friends Society, Natwar Nagar, Jogeshwari East, Mumbai - 400060.

Developers : **H RISHABRAJ REALTY**
Corporate Address :
103, Jai Tirth, Daulat Nagar, Road No. 10, Borivali (East), Mumbai - 400066
Ph : 022 2893 4545 | 2893 4747 Sales : 8989 72 4545 / 8989 73 4545
E : sales@hrishabraj.com W : www.hrishabraj.com

A Proud Member of **BRIHANMUMBAI DEVELOPERS ASSOCIATION**

MahaRera number : P51800035106 (<https://maharera.mahaonline.gov.in>)

Disclaimer : The plans, specifications, amenities, facilities, images and other details herein are only indicative and the developer's reserve their rights to change any of all of these in the interest of the development. This printed material does not constitute an offer and or contract any type between the developer and the recipient. Any purchase of this development shall be governed by the terms and conditions of the agreement for sale/lease entered into between parties and no detail mentioned in this printed material shall in any way govern such transaction.

www.ommscient.in 8369198275



AN AMBIENCE OF BLISS

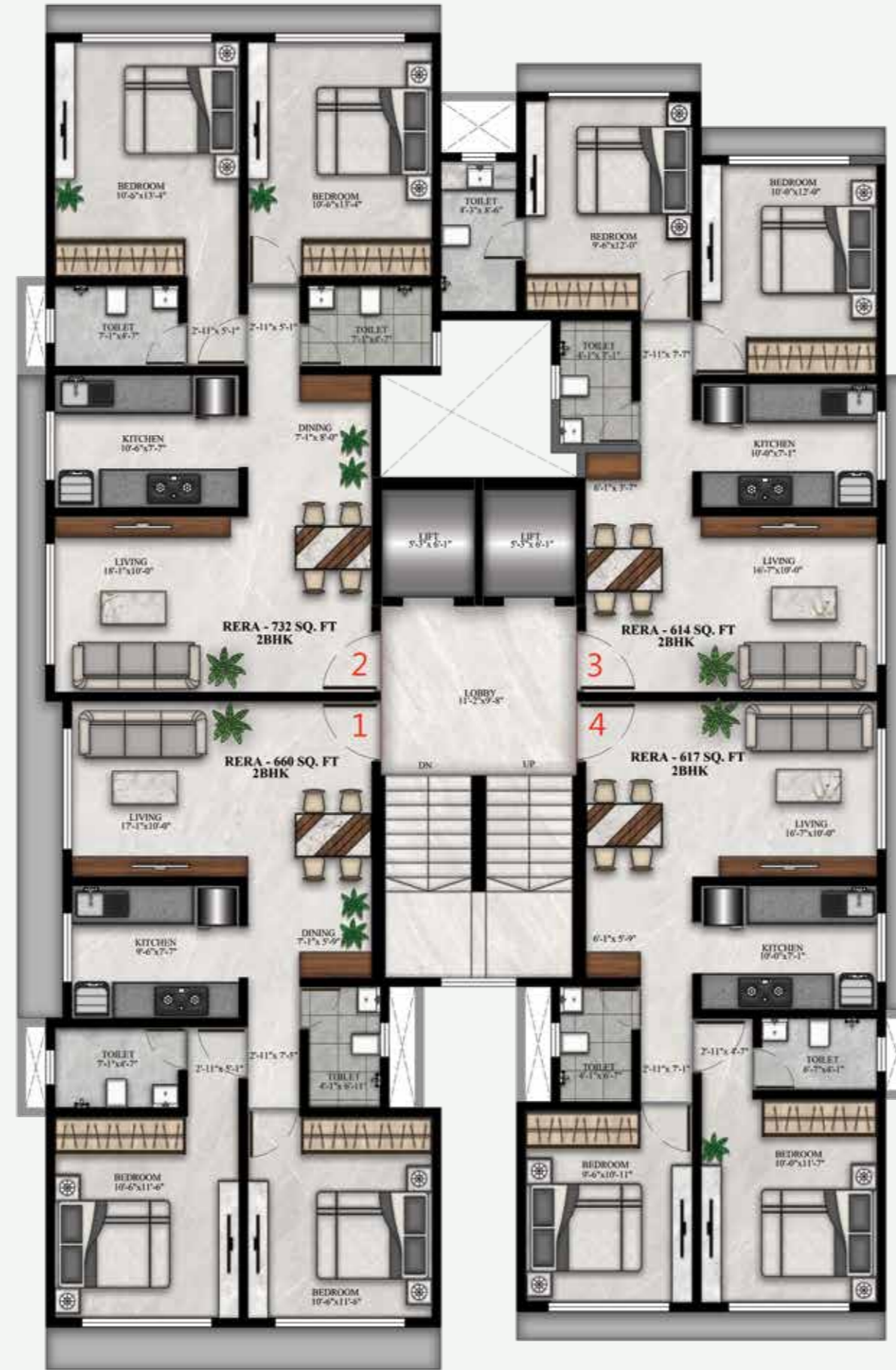
The panorama of life's beauty unfolds here, at Rishabraj Gardenia, at Jogeshwari East. Nestled in the pristine locales of Hindu Colony & embraced by the lush greens of Saraswati Baug and College Ground, the project enjoys exclusive connectivity to the highway and the nearest railway station. Unique by its own standards, the residential splendour is a charming collective of 2 BHK abodes that are a premium blend of contemporary design and upscale sophistication. Rejoice with a glorious residential extravaganza where life is as plentiful as the alluring bouquet of premium well-planned amenities. Step into the enchanting lobby and marvel as they reflect back a glimpse of the perfect harmony and glorious detailing that grace your arrival. Experience truly large scale living and lifestyle innovation with a sprawling green rooftop terrace garden that promise to offer you abundance at its peak, with a host of exquisite facilities. So welcome to RISHABRAJ GARDENIA.


INTERNAL AMENITIES

- Slab to Slab height is 11 feet.
- Vitrified flooring in entire flat.
- Anodized Aluminium sliding windows and marble frame.
- M. S. Railing on external windows in Living and Bedroom.
- Granite double kitchen platform with Stainless steel sink.
- Concealed copper wiring with Goldmedal switches and accessories with E.L.C.B.
- Designer bathroom with anti skid ceramic tile flooring.
- Concealed plumbing with superior quality sanitaryware and Jaquar fittings or any similar brand.

EXTERNAL FACILITIES

- Designer Entrance Lobby
- Terrace Garden
- Ample Car Parking.
- High speed elevators of a reputed brand.
- Chequered tile / pavers in the entire compound.
- CCTV surveillance in common area.
- Advance fire fighting system as per approvals.
- Earthquake resistant construction.



TYPICAL FLOOR PLAN 

FLAT NO.	TYPE	RERA CARPET AREA
1	2 BHK	660 SQ. FT.
2	2 BHK	732 SQ. FT.
3	2 BHK	614 SQ. FT.
4	2 BHK	617 SQ. FT.

