

KCD EMERALD

A Place you would migrate from thousand miles
just to make it your home.....



*Home
is where
your story
begins*

"Road To Success Is Always Under Construction"

NEW HOME
→ new →
beginning
• NEW •
MEMORIES



"KCD" brings you closer to the dream you reside in. Considering the working lifestyle of Mumbaiers, we have come up with a convenient Residential & Commercial project "KCD EMERALD" which is located in the heart of Mumbai suburb, offering accessibility to various necessities. We have vividly showcased the best of architecture satisfying your utmost needs. The exteriors of the project are not only the things which make it unique, but the incredible features & convenient services will also make you feel right at home.



Introducing

KCD EMERALD

A Place you would migrate from thousand miles
just to make it your home.....

DAY VIEW



Prospective View

NIGHT VIEW



Prospective View

Fitness Center



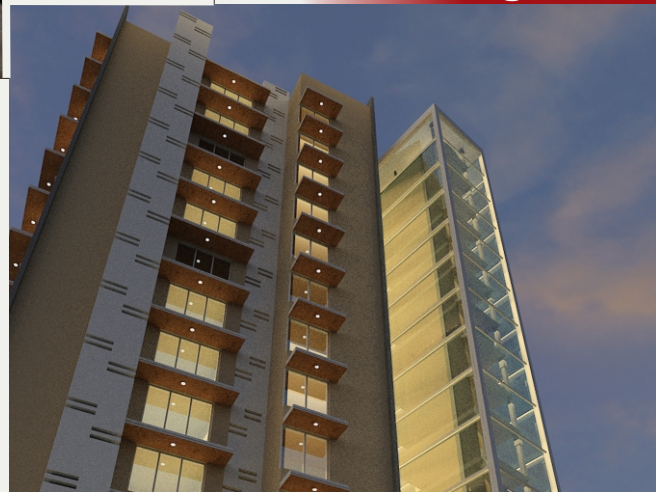
Elegant Lobby



Society Office

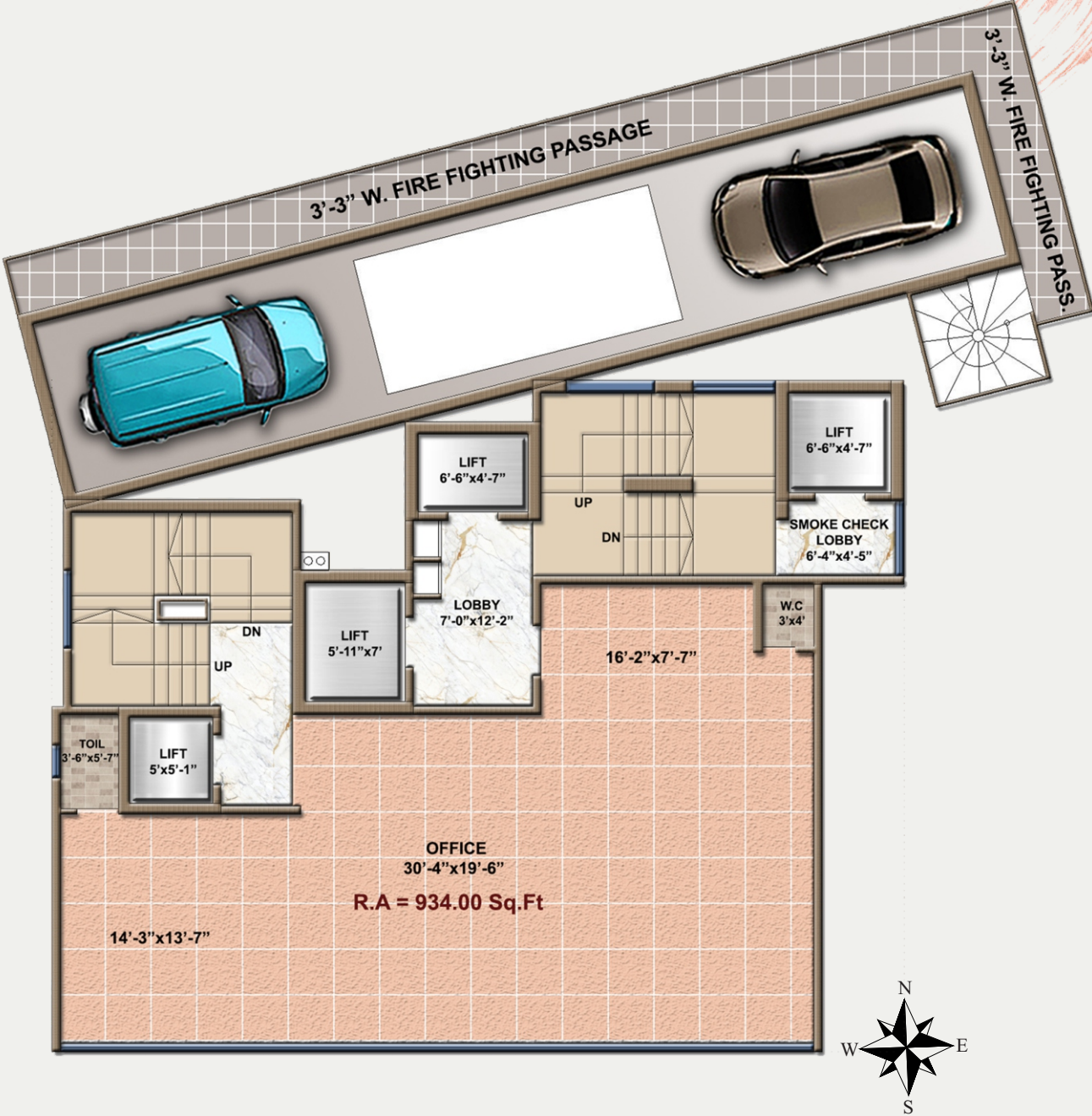


Parking Tower



The project "KCD EMERALD" in close proximity to Shopping Mall, Banks, Multiplexes, Commercial Areas, Public Utilities, Gardens, Markets, Schools, Colleges, Hospitals & Wide Network of Roads.

1st & 2nd Floor Plan



934 Sq Ft Rera Carpet Area

Typical Floor Plan



Isometric

393 Sq Ft Rera Carpet Area

**Well Connected by Rail, Road & Air
Lush Greenery & Heart of the city
Just the location you asked for.**



Location





The project "KCD EMERALD" in close proximity to Shopping Malls, Banks, Multiplexes, Commercial Areas, Public Utilities, Gardens, Markets, Schools, College, Hospitals etc..



HIGHWAY
15 MINS DRIVE



RAILWAY
5 MINS DRIVE



PROPOSED METRO STATION
5 MINS DRIVE



CINEMA
10 MINS DRIVE



UTILITY STORES
5 MINS WALK



SCHOOL
5 MINS WALK



LINK ROAD
5 MINS DRIVE



HAVELI
2 MINS WALK



TEMPLE
2 MINS WALK



JAIN DERASAR
5 MINS WALK



HOSPITAL
5 MINS DRIVE



PARK & CLUB
5 MINS WALK

