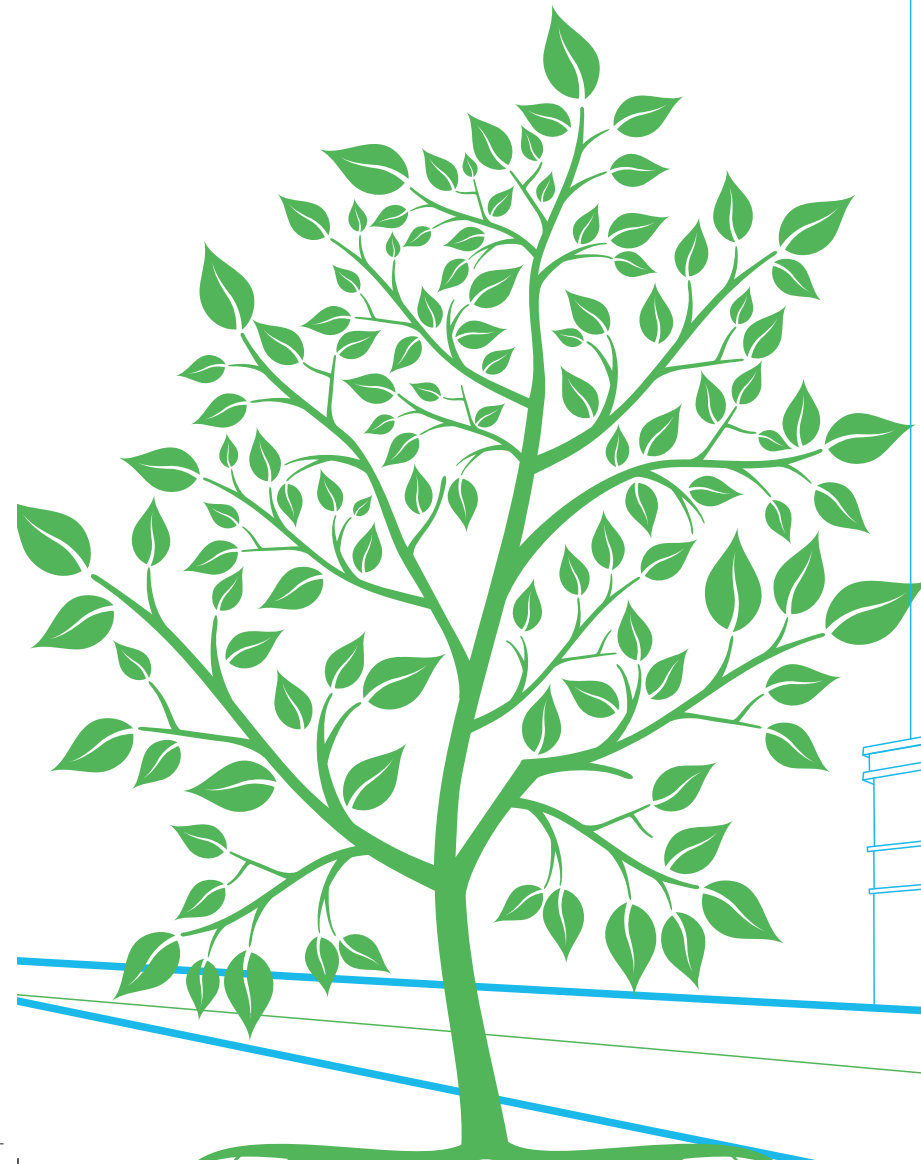


**OM SHIVALAYA**
Jogeshwari East

**DIPTI GROUP**
Since 1982





"DIPTI GROUP" is a Leading real estate development company in the industry since 1982. Our proven track record stands proud with more than 45 completed developments.

We collaborate with leading architects, designers and builders to ensure each development is distinctive, unique and significant.

We have created some majestic and ultra luxurious abodes in the most finest locations such as Mumbai, Kolhapur, Gujarat, Talegaon, and Lonavala.

Our team is passionate about crafting distinctive, quality homes, finished with an immense sense of pride and meticulous attention to detail. It is this philosophy which draws discerning clients to us, time and again.





OM SHIVALAYA is a thoughtfully planned residential project in Jogeshwari East.

Super spacious, lavish and high ceiling abode with larger exteriors and contemporary designs is everything you can ask for and yet there is so much more!

With centrally located transport systems including bus, train and metro services both residents and visitors enjoy easy and quick access to Western Express Highway and other notable neighbourhoods.

With a passion for superior quality in all their projects, DIPTI BUILDERS have brought in their A-Game to OM SHIVALAYA!



Modern Day Conveniences at Your Doorstep!

Choose a life of elite living with convenience at every step of the way! Situated in a brilliant location, OM SHIVALAYA has plenty amenities like state-of-the-art gym, rooftop swimming pool, gazebo and so much more. Book Now!





Elegant Living bundled with luxury amenities!

Walk through the artfully constructed Grand lobby, the interior offers a peak into the luxury that you will be entering when you step inside your home. Come home to a vision of architectural beauty and style!



A Premium Home for you and your car!

A dedicated parking floor for your car with ample space of integrated, well- assisted and full surveillance parking management system! Don't you struggle parking your car any more. Get to your abode and stay care free!



Apartment Features

SECURITY

- Video Door Phone with Intercom System for inter-building communication from Hikvision or equivalent.



KITCHEN

- Premium range Full Tiles in the Kitchen on all walls
- Granite Kitchen Platform with Stainless Steel Sink



BATHROOM

- Premium Bath Room Fitting of Jaquar or Equivalent
- Hot Water Geyser in all bathrooms
- Designer Wall Tiles In Bathroom With Anti Skid Flooring



GENERAL

- Full Body Vitrified Flooring
- Modular Switches With Sufficient Points from GM or equivalent brand
- Heavy Section Anodised Aluminum Sliding Windows with Jindal or equivalent section



Project Amenities

- Attractive building design with Modern Architecture
- Wi-fi enabled Fitness Centre with Latest Equipments
- Proposed Rooftop Pool*
- Jacuzzi on the Top Terrace
- Rooftop garden with Gazebo and sitting Area
- Attractive Entrance Porch with Security Cabin
- Closed Circuit Cameras (CCTV) for Hi-tech Digital Surveillance
- Grand Entrance Lobby
- High – Tech Fire-fighting system, sprinkler system, fire alarm systems
- Parking Floors with two car lifts for swift movement of vehicles
- RAIN WATER HARVESTING for recharging ground water.
- 2 Hi-speed Passenger Elevators of Otis or Equivalent

*Subject to statutory approvals





Locale you will be situated in



Project Address: _____
 Plot No.10, Hindu Friends Society Rd, Natwar Nagar, Jogeshwari East, Mumbai - 400060

OTHER ONGOING PROJECTS



Dipti Royal Arc
 Shivaji Park, Dadar (W)



Dipti Sky City
 Ambarnath (E)



Dipti Surya CHS Ltd.
 Jogeshwari (E)



Dipti Ocean Terraces
 Shivaji Park, Dadar (W)