



Desire. Dream. Discover



RISHABRAJ
SAMAJ DARSHAN 

*A haven of harmony.... A sanctuary of space,
An abundance of luxury designed to embrace...*

Inviting
Spacious
Grandiose



A home is a sanctuary, a setting for life's many treasured memories and too many to count special moments. It's a space which tells your story, so why not make it an amazing one.

Sometimes, a space comes together so beautifully that it almost feels like its yours and it was meant to be. With that sanctity in mind, we welcome you to Rishabraj Samaj Darshan, a beautifully designed enclave of 16 storeys of stunning 1,2,3 bhk homes delicately balanced in comfort, class and convenience. Located off Mathuradas Road in Kandivali West, the project comes with every nook and corner meticulously planned and perfectly executed, so as to make you fall in love with the expansive open spaces. Spectacularly designed and beautifully finished with exquisite contemporary amenities, an enormous elegant lobby, an enchanting terrace garden and so much more, the towering landmark is imbued with immense beauty and luxe living.

A perfect tribute to effortless living in every way you look at it, the project also shares a common wall with a Jain temple and has elite educational institutions opposite it.



INTERNAL AMENITIES

- Vitrified flooring in entire flat.
- Colour anodized Aluminium sliding windows with tinted glass and marble frame.
- Granite double kitchen platform with Stainless steel sink.
- Concealed copper wiring with Goldmedal switches and accessories with E.L.C.B.
- Designer bathroom with anti skid ceramic tile flooring.
- Concealed plumbing with superior quality sanitaryware and Jaquar fittings or any similar brand.

EXTERNAL FACILITIES

- Designer Entrance Lobby.
- Terrace Garden
- High speed elevators of a reputed brand.
- Chequered tile / pavers in the entire compound.
- Ample Car Parking.
- CCTV surveillance in common area.
- Advance fire fighting system as per approvals.
- Earthquake resistant construction.



STOCK IMAGE



ARTIST'S IMPRESSION

Elegance
Style
Inspiration



ARTIST'S IMPRESSION

Why just own a home, when you can own a lifestyle? A beautifully designed home goes so much deeper than aesthetics, it's a larger than life living experience equipped to amaze and enthrall you in your every waking moment and our intelligent, thoughtfully designed terrace garden promises just that.

A calm oasis of unlimited peace and happiness in the midst of a hustling city, it bears the hallmark of being a welcoming enclave for wonderful means of entertainment and relaxation and the perfect backdrop for days full of wholesome fun, laughter and smiles.

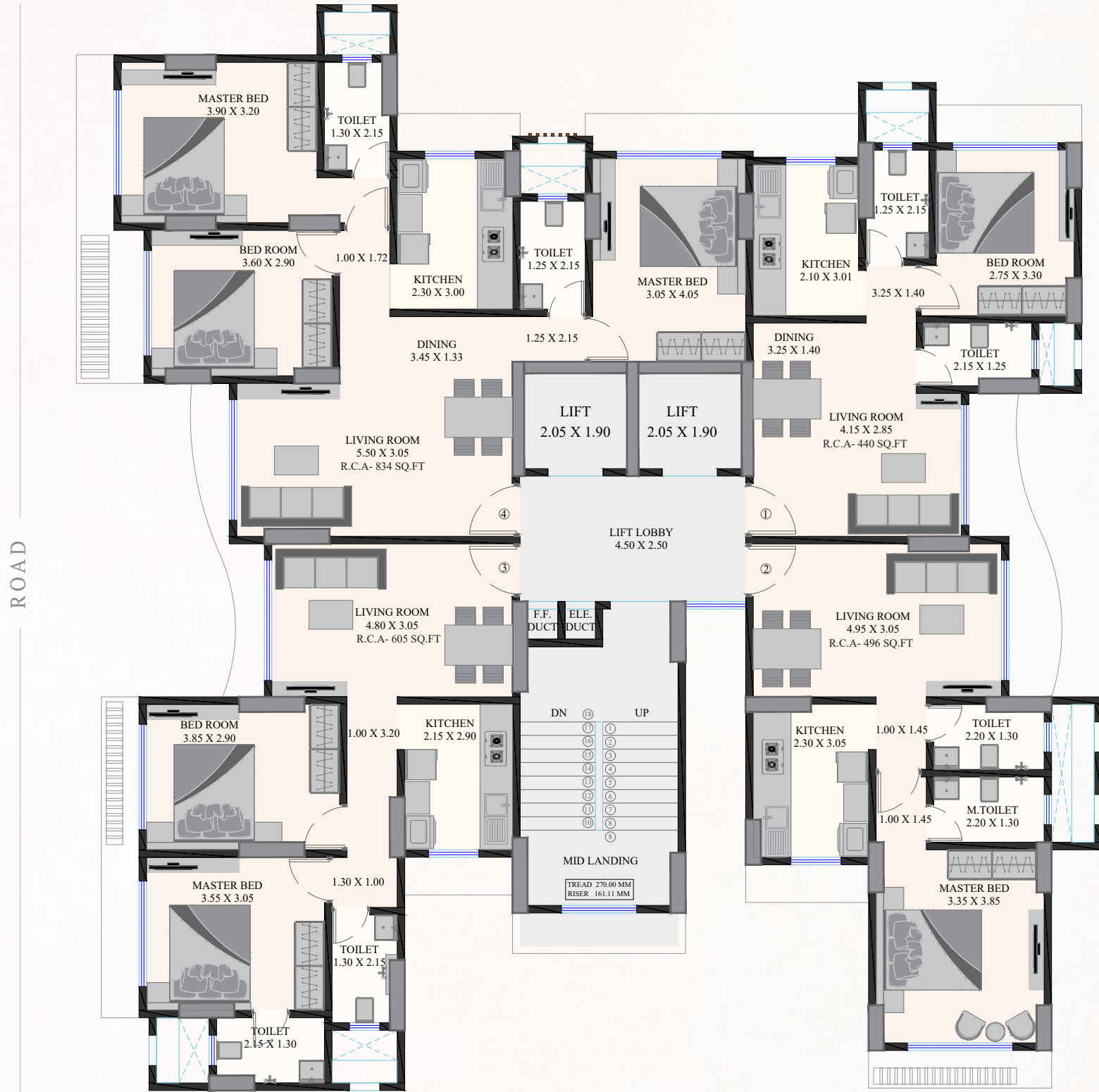
Enchanting
Exquisite
Exceptional





SAMAJ DARSHAN
by
RISHABRAJ DEVELOPERS

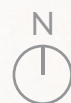
Spaces like none else...



ROAD

ROAD

FLAT NO.	TYPE	RERA CARPET AREA
1	1 BHK	440 Sq. Ft.
2	1 BHK	496 Sq. Ft.
3	2 BHK	605 Sq. Ft.
4	3 BHK	834 Sq. Ft.



TYPICAL FLOOR PLAN

Scripting liveable dreams & unforgettable memories



3 BHK

Lifting dreams to the next level



2 BHK

Escape the ordinary



1 BHK



H. RISHABRAJ

BUILDERS & DEVELOPERS

ENERGIZING HAPPINESS!

www.hrishabraj.com

The Rishabraj brand is synonymous with goodwill, quality, customer satisfaction, and trust. And with Mr. Harrish Kumar Jain spearheading the company into carving its own niche in the redevelopment space, the Group today has about a million square feet under various stages of planning and execution. Having completed 18+ projects over the past few years, the company is known to deliver on promises and in turn, deliver smiles to the faces of every valued client.



LET'S RESTART

COMMITMENTS UNCOMPROMISED

AN INITIATIVE BY H.RISHABRAJ GROUP

www.letrestart.com

The innovative genius of H Rishabraj gave birth to - Let's Restart, the solution provider for delayed and stalled projects.

OTHER ONGOING PROJECTS



RISHABRAJ PRIDE - Dahisar W
MahaRera No. P51800031144



RISHABRAJ ELEGANCE - Kandivali W
MahaRera No. P51800024456



RISHABRAJ RAMESHWAR - Borivali W
MahaRera No. P51800030723



RISHABRAJ ASHISH - Borivali W
MahaRera No. P51800007607



RISHABRAJ MONALISA - Borivali W



RISHABRAJ SURAJ - Borivali W
MahaRera No. P51800029277



RISHABRAJ
SAMAJ DARSHAN 

Site Address: Rishabraj Samaj Darshan, Parekh Lane, Bhulabhai Desai Road, Kandivali west, Mumbai 400067

A Project by



H. RISHABRAJ

BUILDERS & DEVELOPERS

ENERGIZING HAPPINESS!

Developers : **H RISHABRAJ DEVELOPERS**

Corporate Address : 103, Jai Tirth, Daulat Nagar, Road No 10,
Borivali (East), Mumbai - 400066 Ph : 022 2893 4545 | 2893 4747
E : sales@hrishabraj.com W : www.hrishabraj.com

A Proud Member of



MahaRera number : P51800010479 (<https://maharera.mahaonline.gov.in>)

Disclaimer : The plans, specifications, images and other details herein are only indicative and the developer's reserve their rights to change any of all of these in the interest of the development. This printed material does not constitute an offer and or contract any type between the developer and the recipient. Any purchase of this development shall be governed by the terms and conditions of the agreement for sale/ lease entered into between parties and no detail mentioned in this printed material shall in any way govern such transaction.