



OUTLINE AN EPIC LIFESTYLE



RISHABRAJ

VATSAL

The timeless appeal of the luxurious life....

A gleaming beacon of its owners' pride, Rishabraj Vatsal in Kandivali West is an architectural marvel of 3 pristine wings, wherein you find space for both your residential and commercial aspirations. While one wing with its retail spaces and commercial offices is being presented as a soon-to-be hotspot of commercial hubbub, the other two wings are primed to be swanky residential arenas with deluxe 3 & 2 bhk flats primed with uber elite facilities and fittings.

True to its claim of being an embodiment of modernization, the project also houses a parking tower within the premises. An epitome of luxury with world-class amenities, the project comes as a perfect amalgamation of creativity and urbanization, that provides state-of-the-art infrastructure. An exciting new adventure in the aspirational residential living cum commercial spaces terrain, we have designed, defined and projected your every wish and aspiration with a new narrative. A seamlessly integrated space where your lifestyle is reimagined and efficiently detailed so that all your commercial needs are housed under the same roof as you and you get to dwell in a modern-day utopia.



ARTIST'S IMPRESSION



ARTIST'S IMPRESSION

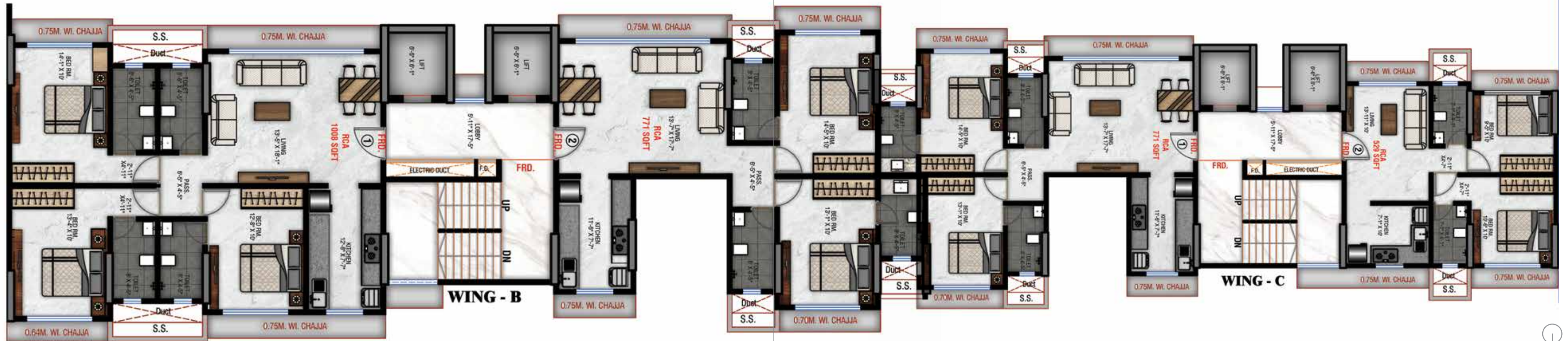


The retail way to happiness...



Well Planned retail spaces and commercial offices with modern amenities





TYPICAL FLOOR PLAN



Internal Amenities

- Vitrified flooring in entire flat.
- Colour anodized Aluminium sliding windows with tinted glass and marble frame.
- M. S. Safety Grills on external windows in Living and Bedroom.
- Granite double kitchen platform with Stainless steel sink.
- Concealed copper wiring with Goldmedal switches and accessories with E.L.C.B.
- Designer bathroom with anti skid ceramic tile flooring.
- Concealed plumbing with superior quality sanitaryware and Jaquar fittings or any similar brand.



STOCK IMAGE

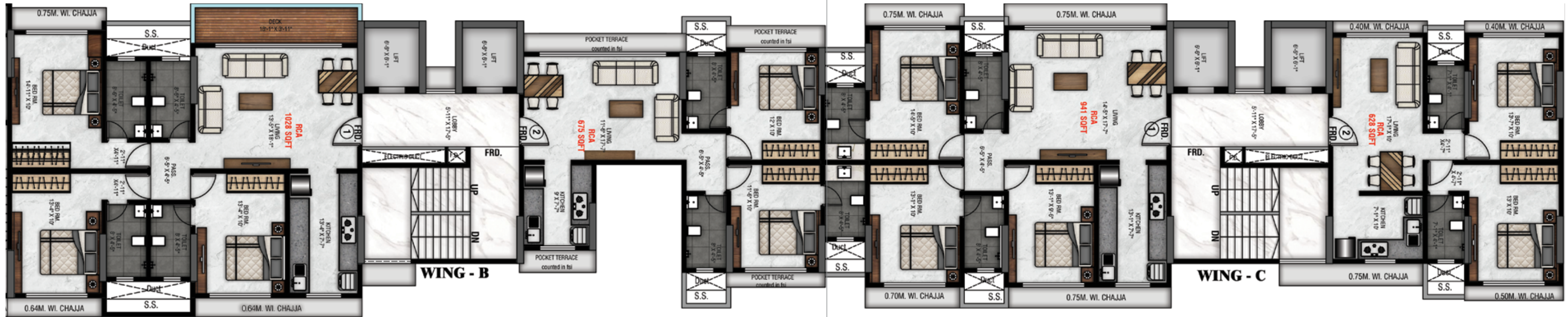
WING B

FLAT NO.	TYPE	RERA CARPET AREA
1	3 BHK	1008 SQ. FT.
2	2 BHK	771 SQ. FT.

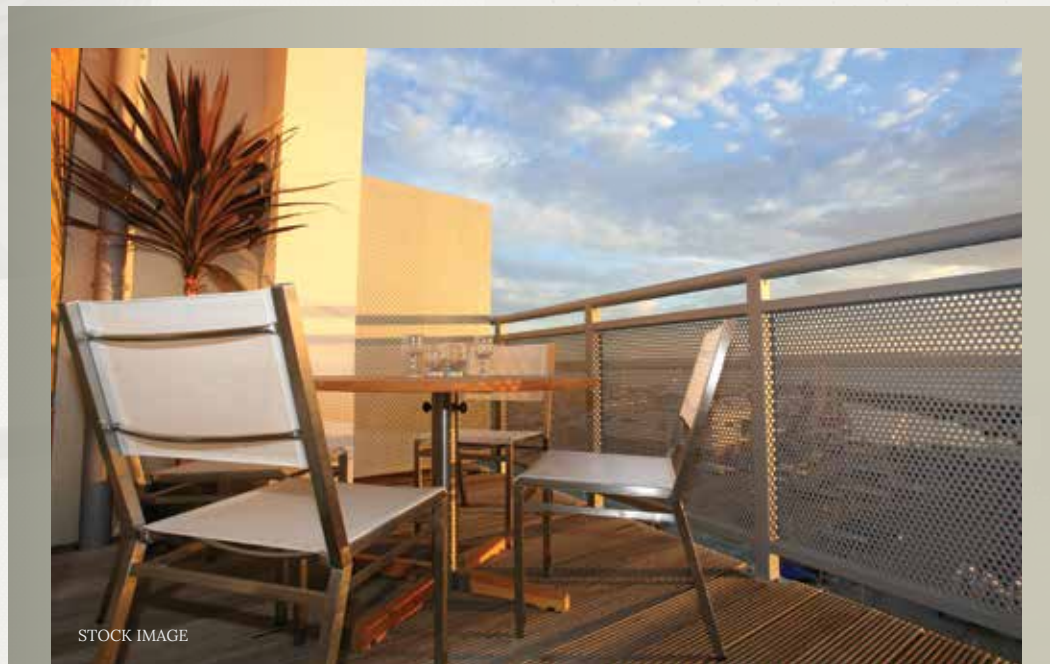
WING C

FLAT NO.	TYPE	RERA CARPET AREA
1	2 BHK	771 SQ. FT.
2	2 BHK	529 SQ. FT.





TYPICAL FLOOR PLAN



STOCK IMAGE

WING B

FLAT NO.	TYPE	RERA CARPET AREA
1	3 BHK	1028 SQ. FT.
2	2 BHK	675 SQ. FT.

WING C

FLAT NO.	TYPE	RERA CARPET AREA
1	3 BHK	941 SQ. FT.
2	2 BHK	628 SQ. FT.



WING A

WING B

WING C

PARKING TOWER



Live a brighter life!

Rishabraj Vatsal is as beautiful and efficient on the outside as it is on the inside. Rejoice in the discovery of serene yet revitalizing open green spaces where you can unwind, relax or be with yourself. Regale in the lush serenity of beautifully planned sit-out areas and childrens play zones for those family moments which add a dazzling sheen to your daily life. So that every moment you spend here adds to your growing treasure trove of smiles and laughter.



Site Address: Rishabraj Vatsal, SV Rd, Kandivali, Parekh Nagar, Kandivali West, Mumbai 400067

An address with an advantage

Located in S V Road, Kandivali West, the project boasts of excellent streamlined transit and connectivity. A small walk away from the closest railway station, enjoy effortless city living with an address that provides ease of road and excellent rail connectivity. The project also offers close proximity to many social, medical and educational opportunities.

At Rishabraj Vatsal, where every facility and amenity is in close quarters, you come to spend more time with your loved ones wrapped in the ecstasy of a superlative living experience.

Other Projects



RISHABRAJ SAMAJ DARSHAN - Kandivali W
MahaRera No. P51800010479



RISHABRAJ PARKVISTAS - Borivali W
MahaRera No. P51800033442



RISHABRAJ PHOENIX - Borivali W
MahaRera No. P51800033878



RISHABRAJ PERCY - Borivali W
MahaRera No. P51800034819



BLUE LOTUS - Khar W
MahaRera No. P51800033826



63 GOLD MEDAL AVENUE - Goregaon W
MahaRera No. P51800027330



H. RISHABRAJ

BUILDERS & DEVELOPERS

ENERGIZING HAPPINESS!

www.hrishabraj.com



LET'S RESTART

COMMITMENTS UNCOMPROMISED

AN INITIATIVE BY H.RISHABRAJ GROUP

www.letrestart.com

Trust, quality, customer satisfaction, and goodwill are values that are today synonymous with the Rishabraj brand. With Mr. Harrishkumar Jain at the helm of the company, the group has succeeded in translating millions of wishes into reality. The earnest dedication and rising momentum of the company has resulted in the group setting new yardsticks in the redevelopment niche. With glowing testimonials from 1000 + ecstatic families spread over 1 million sq.ft of premium living space happily under its belt, the Group continues to carry forward its never ending passion for excellence with 1.5+ million sq. ft under various stages of planning & construction.

In the city of Mumbai most projects are in dire need of revamping or construction work on booked projects is stalled. This shatters the precious dream of millions who wish to live the ultimate life in this city of dreams.

Is there no respite in sight for such scenarios? Is there a possibility of a saviour emerging from the very belly of this magnificent city to help fix this huge problem? Well, the answer is a resounding Yes!

The innovative genius of H Rishabraj gave birth to a revolutionary brand in the year 2020. We are Let's Restart and Welcome to the ultimate solution provider for delayed construction projects.