

Dream? Reality?

FORTUNATELY, BOTH.

PASSCODE
*Dream of
Powai*



SOME CALL IT A *dream.*
YOU WILL CALL IT *home.*

Welcome to the home of your dreams right here in Passcode Dream of Powai.
Close to Powai Lake, surrounded by lush greenery and the finest urban infrastructure, these lavish living spaces provide a life of perfect balance, with seamless connectivity, unhindered views, luxurious amenities and access to the most prominent business and social hubs, this is a dream lifestyle that only a chosen few will have the privilege of living.





IS THE DAILY COMMUTE A NIGHTMARE?

MAKE IT A *dream.*

Built minutes from the Eastern Express Highway, Passcode Dream of Powai offers you immediate road connectivity to all the work areas of the city, including BKC, Fort, Business Zones in Andheri East and the SEZs. Many of you might find work close to home, with MNCs, Pharma Cos., Banks and NBFCs in this area. Metro lines are easily accessible and the Lokhandwala-Jogeshwari-Vikhroli-Kanjurmarg Metro line is coming up too.

| | | |
|--|----------------------|-----------------|
| | Hiranandani Hospital | 7 min (1.7 km) |
| | Naval Hospital | 10 min (2.5 km) |

| | | |
|--|--------------|----------------|
| | Powai Lake | 9 min (2.5 km) |
| | Powai Garden | 15 min (5 km) |

| | | |
|--|-------------------|----------------|
| | DMart (LBS Road) | 5 min (1 km) |
| | Haiko Supermarket | 6 min (2.2 km) |

| | | |
|--|-----------------------------|-----------------|
| | GHP Powai English School | 5 min (1.4 km) |
| | Poddar International School | 5 min (2.1 km) |
| | Hiranandani School | 10 min (3.1 km) |

| | | |
|--|-------------------------|-----------------|
| | JVLR | 2 min (100 mtr) |
| | Metro Line 6 (Upcoming) | 5 min (600 mtr) |
| | LBS Road | 5 min (600 mtr) |
| | Eastern Express Highway | 9 min (2 km) |
| | Western Express Highway | 25 min (9.5 km) |
| | International Airport | 30 min (10 km) |

| | | |
|--|--------------------------|-----------------|
| | The Chedi Hotel | 5 min (650 mtr) |
| | Carnival Cinemas Huma | 9 min (1 km) |
| | Rodas Hotel | 12 min (2.1 km) |
| | R City Mall | 15 min (5 km) |
| | The Westin Hotel - Powai | 15 min (5 km) |

Disclaimer: *Travel Distances as per Google Maps | *All points of interest are indicative.

POWAI LAKE ON ONE SIDE AND THE EASTERN SEABOARD

ON THE OTHER. THE VIEWS OTHERS DREAM OF, *you see.*

Live in a place where the sun rises over a lake and sets over the sea. That's exactly what Passcode Dream of Powai offers with fabulous views on both sides. Plus, you will see vistas of the greenery in Powai, the cityscape and the mountains in the distance. The ideal companion to your morning cup of tea. Or your evening sundowner.



Actual view & Representative image

Balcony Homes

STILL LOOKING
FOR YOUR DREAM *home?*
YOUR SEARCH IS OVER.

Imagine one of Mumbai's finest properties, built in one of the city's finest localities. That's exactly what Passcode Dream of Powai is. Developed by one of Mumbai's most reputed real estate companies, this 3-tower community is an amalgam of everything that leads to a life of luxury.

Crafted to international standards, the development is devoted to the finest lifestyle that can be offered. Each home at Passcode Dream Of Powai is constructed with the finest materials and fittings that speak of opulence, comes with balconies that offer stunning views. Below are the reasons that make this community the finest in Powai.



Magnificent
38-storey tower



First habitable floor
from 8th level



A plethora of 20+
lifestyle amenities



250 mtr
aerial skywalk



15,000 Sq.Ft.
of amenity space



Artist's impression

SWIMMING POOL



THE DREAM CARRIES ON.

EVEN IN *the day.*

With so many green areas, simply designed for relaxation, it's completely possible to dream here. Where the days flow by, like a cool breeze under the sun.

LEISURE AMENITIES

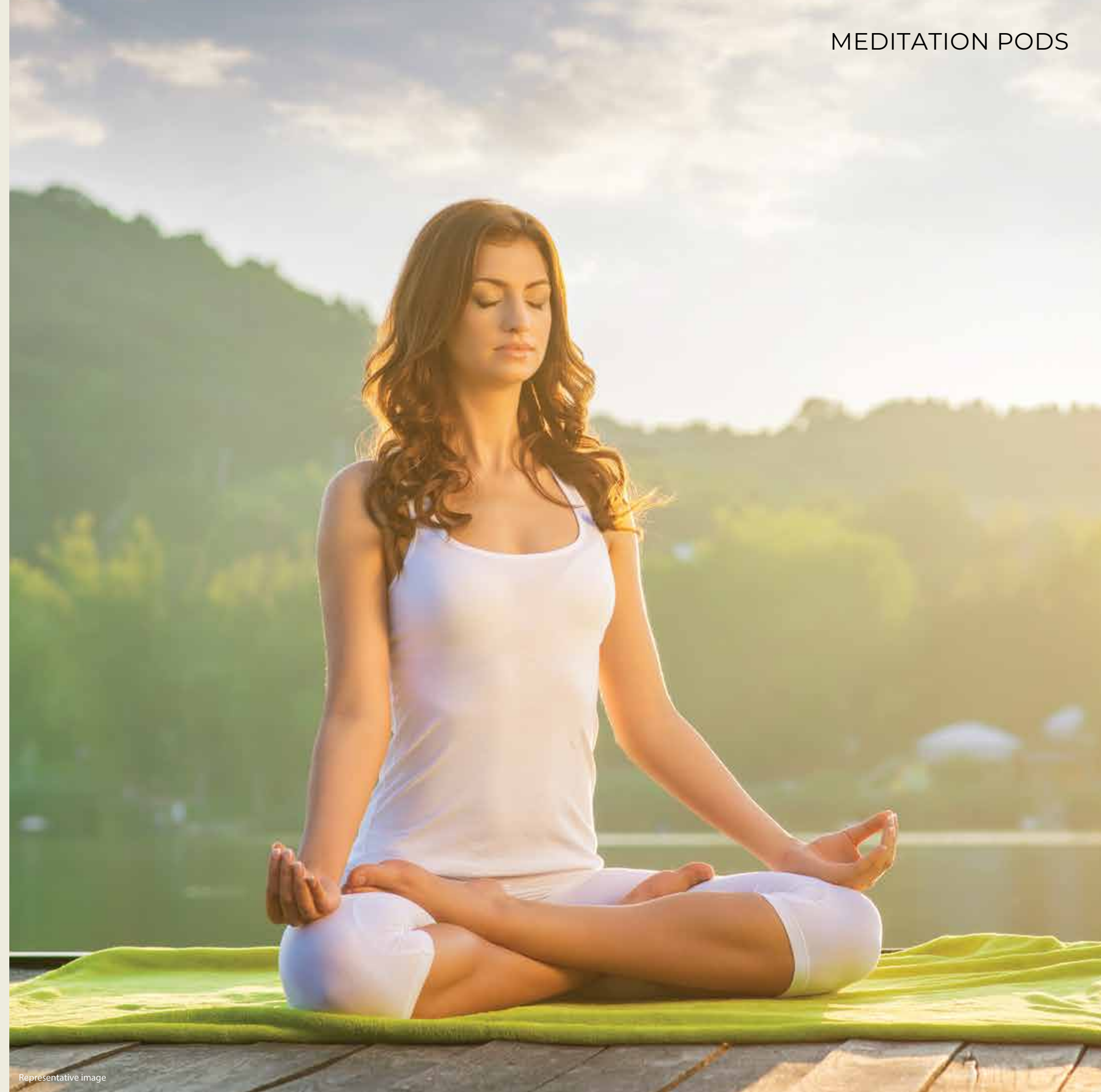
Swimming Pool | Pool Deck Area | Kids' Play Area | Reader's Retreat | Mini Theater
Pergola Roof Sun Shader | Amphitheater | Board Game Corners | Game Arcade | Pool Table
Infinity Sitting Area | Games Room | Sand Pits | Live Water Feature

WAKE UP TO THE
HIGH LIFE YOU'VE BEEN
dreaming of.

Get used to a life where the most luxurious comforts are served to you on a platter. Whether it's business or pleasure, at Passcode Dream of Powai, the finest lifestyle amenities are within arm's reach.

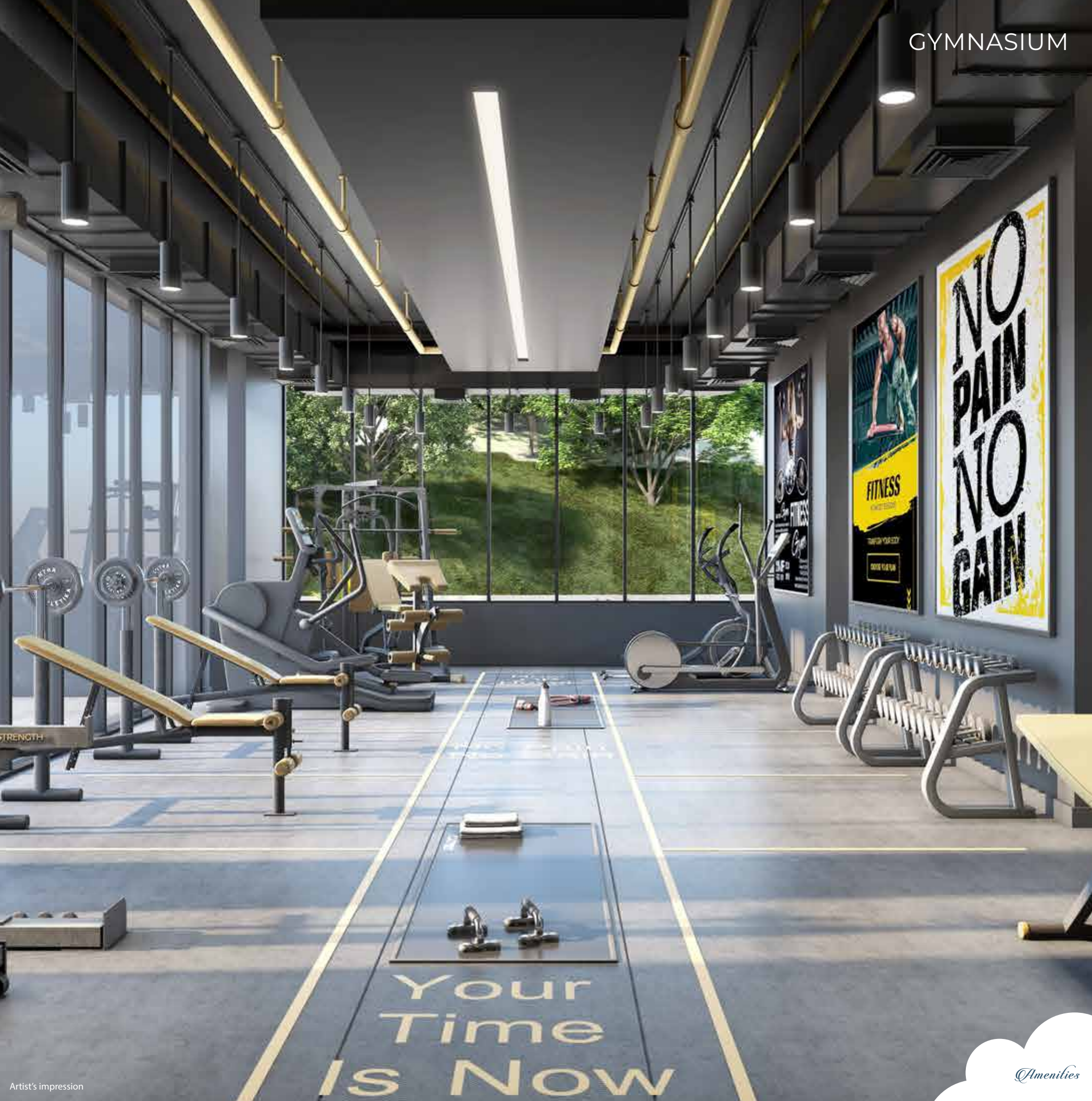
PEACEFUL AMENITIES

Sauna & Jacuzzi | SPA Area | Recreational Garden Area
Yoga Room | Meditation Pods | Green Grotto Seating



Representative image

GYMNASIUM



HERE, ANY FITNESS ROUTINE
YOU CAN DREAM UP, *is yours.*

Imagine a world where fitness and pleasure co-exist. Enter Passcode Dream of Powai.

And the fitness lifestyle you so aspire to, becomes a reality.

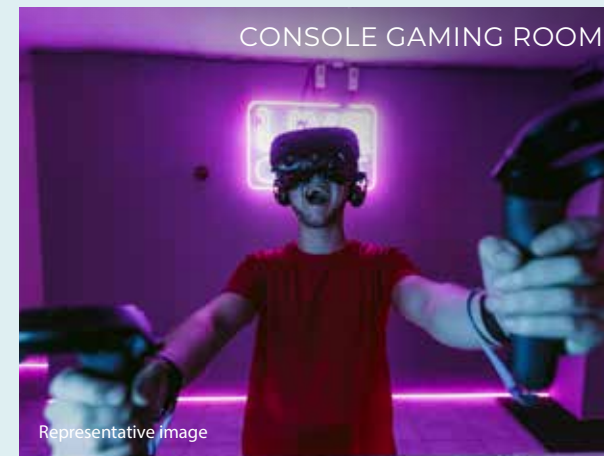
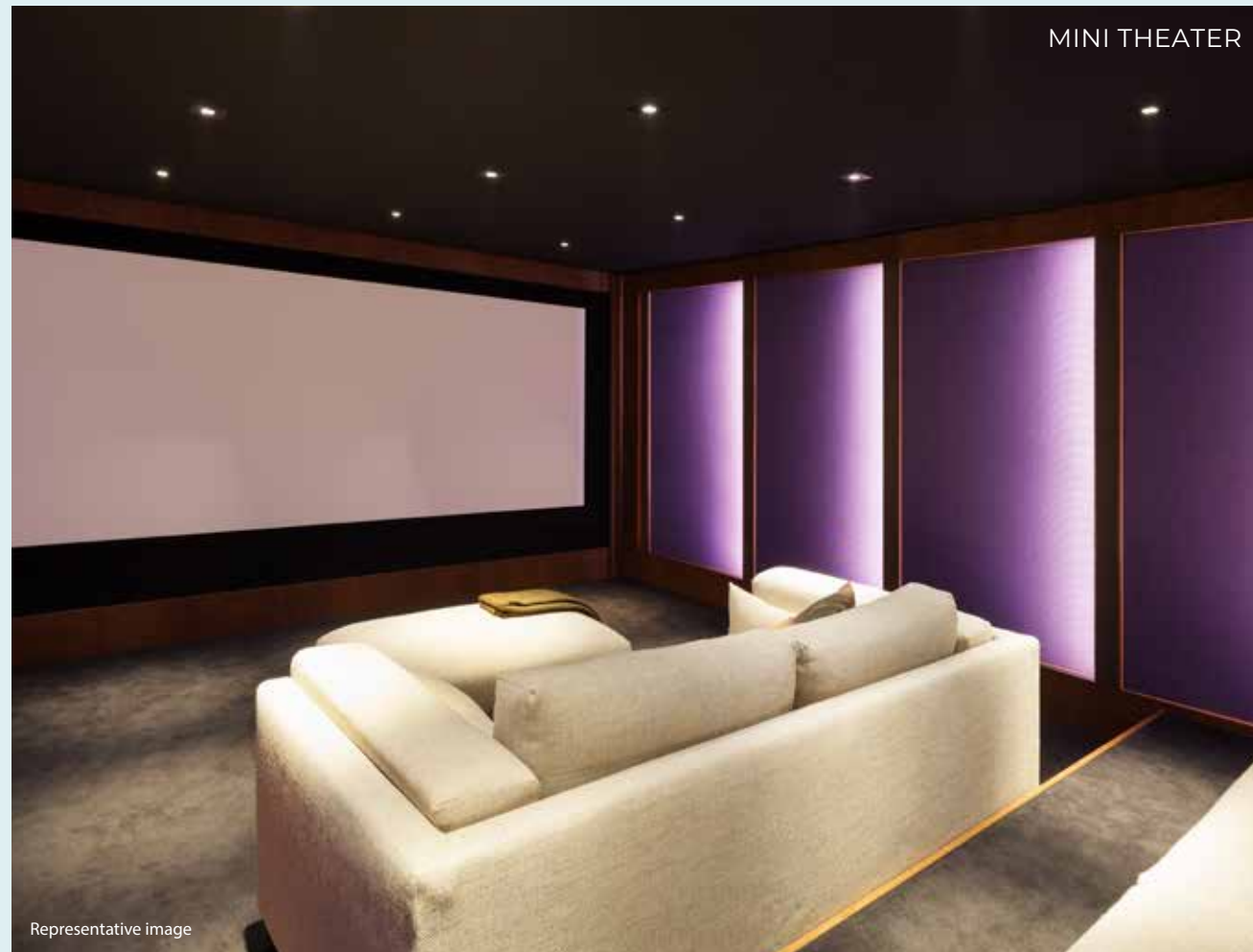
A gym, a yoga area – you think it and it's there.

FITNESS AMENITIES

Jogging Track | Dance Pavilion | Gymnasium | Cardio Area

Mini Badminton Court | Health Bar

THE AMENITIES YOU'VE *dreamt* OF,
WE'VE CREATED.

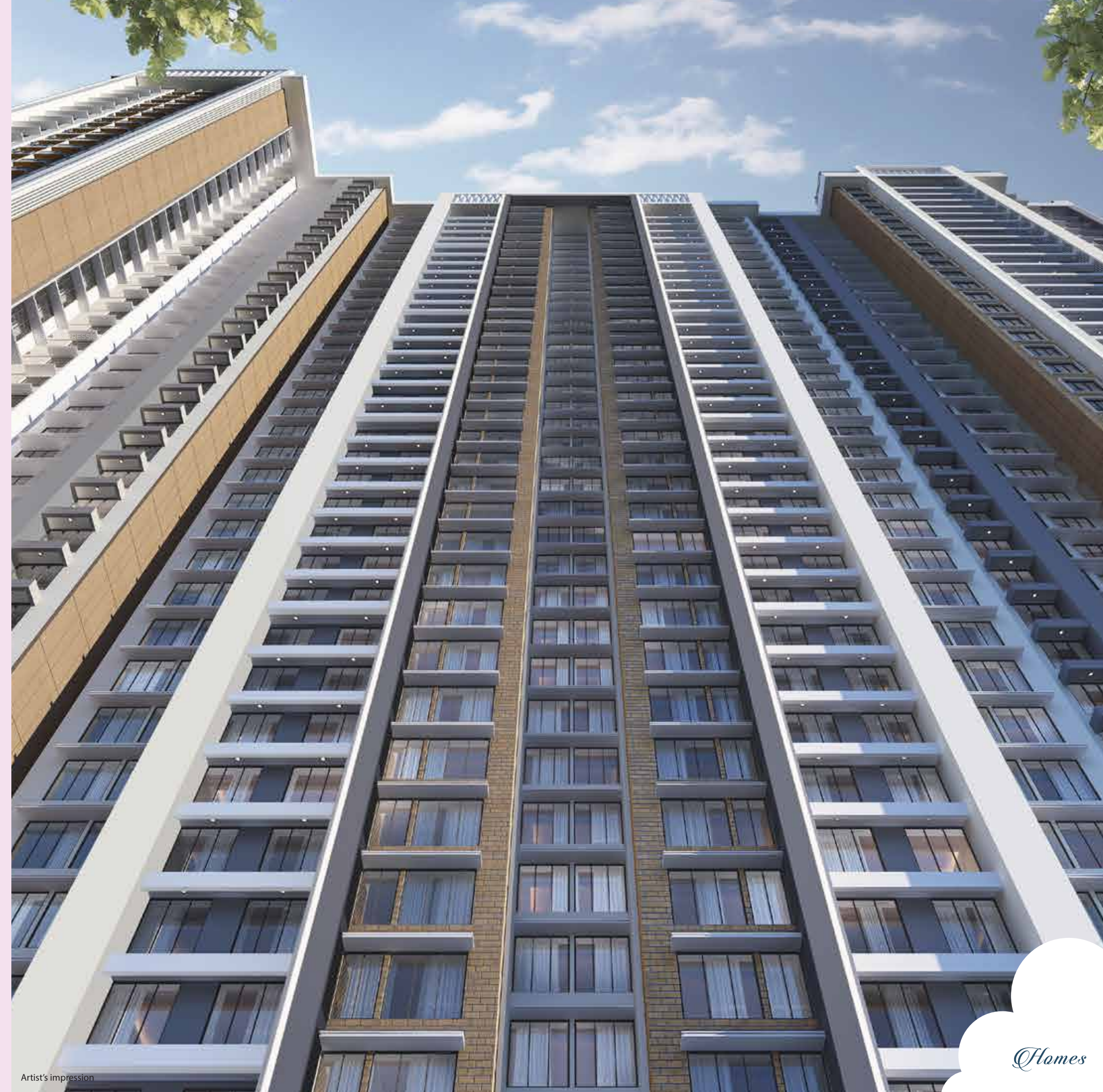


WELCOME TO A DREAM HOME

BROUGHT TO *life.*

Welcome to dream-worthy 1 & 2 bed homes right in the heart of Powai.

These living spaces are thoughtfully planned with balconies to take in breathtaking views of Powai Lake. With an abundance of natural light, fresh air, the finest comforts and plenty of room for everything you need, they bestow a highly coveted lifestyle upon each resident here.



Artist's impression

Homes

LIVING ROOM



YOUR FRIENDS WILL THINK

IT'S A DREAM.

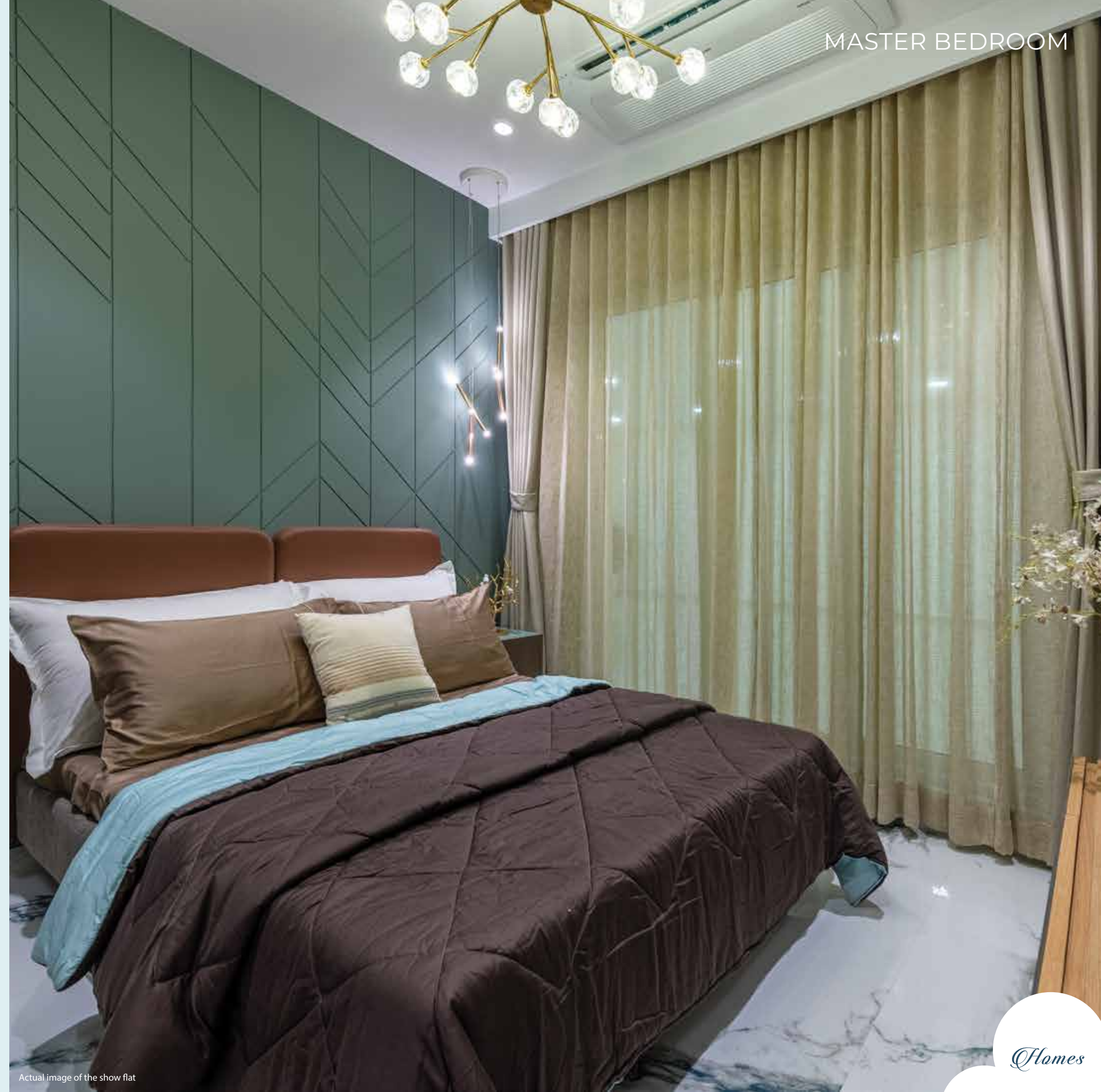
YOU LIVE IT *every day.*

Happiness and peace. That's what the living rooms at Passcode Dream of Powai are designed for. They are cross-ventilated and luxurious, making for the ultimate setting to create precious memories with family and friends.

Homes

SWEET DREAMS? *Obviously.*

The minute you enter your bedroom here, you'll feel an unmistakable sense of tranquillity. Possibly, the one place where the dream begins even before you fall asleep.



Actual image of the show flat

THAT MASTER CHEF DREAM?

Keep it alive.

Step into your ideal kitchen here. Sleekly designed with a well-planned layout, this kitchen is dedicated to help you produce dream meals for your family and friends.



KITCHEN

Actual image of show flat



BATHROOM

Representative image

BATHROOMS SO BEAUTIFUL,

YOU WILL THINK YOU'RE *living a dream.*

Although space is in abundance here, there is absolutely no room for stress at Passcode Dream of Powai.

That's why even the bathrooms come with the finest luxury fittings and finishes and plenty of space, so you can completely unwind.

Homes

PARKING PROBLEMS?

The solution

YOU DREAMT OF IS HERE.

A state-of-the-art parking system and a reserved spot in the city.

At Passcode Dream of Powai, even your vehicle enjoys unmatched privileges. You can rest easy knowing your vehicle will be well-taken care of, the same way you will be.



Representative image

Parking

PROTECTING YOUR DREAMS?

THAT'S OUR

NUMBER ONE *priority.*

Security is of utmost importance here at Passcode Dream of Powai. With advanced CCTV surveillance and an experienced crew watching over your home 24x7, you can live your dream life peacefully.

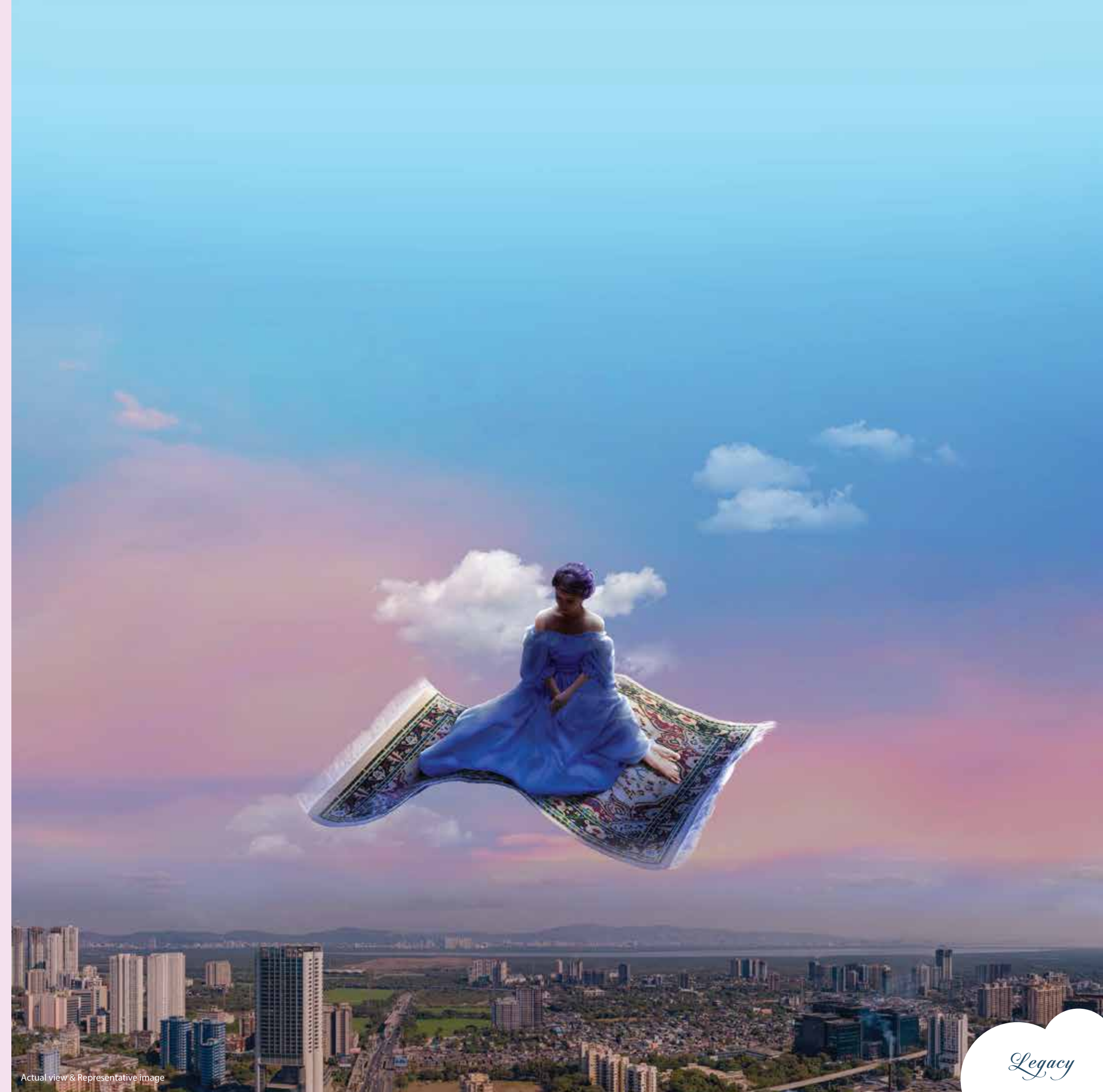


Representative image

Security

MAKING YOUR DREAMS
COME TRUE. A COMMITMENT
we live by.

Passcode Dream of Powai was envisioned by the GHP Group and the Skyline Group, to shape the face of Powai with a state-of-the-art architectural wonder. Over our years of experience building trust by providing quality construction projects across homes, offices, education and hospitality, we have always tried to find ways in which dreams can be fulfilled.



Actual view & Representative image





HOSPITALITY

EDUCATION



Angel Resort - Jaipur



Gopal Sharma International School



Skyline Oasis



Skyline Epitome



Icon



Woodland



GHP Aston



GHP Sonnet



GHP Trinity



Skyline Sparkle



Skyline Wealthspace



Skyline Magnus



 Dream Of Powai is the passcode name for project: MARS WING B and is registered under MahaRERA No: P51800047829 and is available on the website <https://maharera.mahaonline.gov.in> under registered projects. Passcode Dream of Powai is used for marketing purpose only.

Disclaimer: The information, plans, specifications, images, configuration, dimensions, facilities and other details contained herein are indicative of the kind of development that is proposed by the Promoter and the intended recipient/reader/viewer/interested party should note that these are to be treated as purely provisional and informative and as such only tentative subject to approval of authorities or otherwise and the Promoter reserves the right to make changes and alterations at its sole discretion. None of the images, material, stock photography, projections, elevations, details, descriptions and other information that are displayed/ contained herein, should be deemed to be or constitute advertisements, solicitations, marketing, offer for sale, invitation to offer, invitation to acquire, including within the purview of the Real Estate (Development and Regulation) Act, 2016 ("RERA"). This advertisement is purely conceptual and purchase in this project shall be governed by the terms and conditions of the Agreement for Sale. While every reasonable care has been taken in fashioning this advertisement, Any intended recipient/reader/viewer/interested party should verify all the information with the Promoter prior to purchase in the project, the Promoter cannot be held responsible for any inaccuracies or omissions. The Promoter shall not be responsible for any action taken by the intended recipient/reader/viewer/interested party relying on such material /information on the Website and brochures and any information provided by Real Estate Agent /Broker/ Channel Partner without independently verifying with the Promoter. *T&C Apply.