



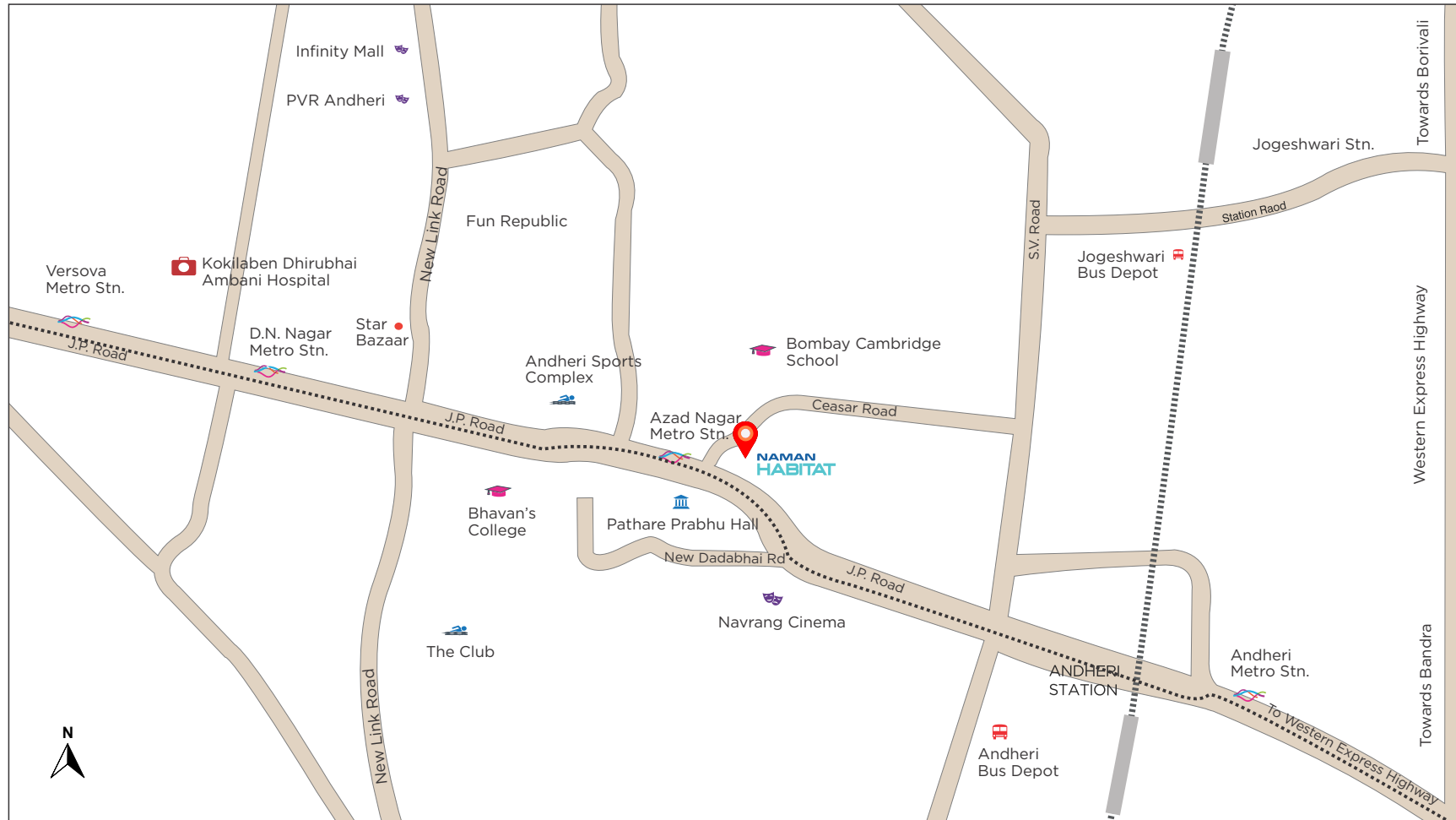
# WELCOME TO NAMAN HABITAT



# INTRODUCTION

Naman Habitat is an upscale residential complex offering 2 BHK and 3 BHK apartments with unmatched connectivity.

Conveniently located at J.P. Road, Andheri (W), Naman Habitat brings you perceptively designed apartments with a host of podium and roof-top amenities that demonstrate luxury and magnificence.



## LOCATION HIGHLIGHTS

At Naman Habitat, every convenience is centrally located - the best schools, colleges, malls, hospitals, modes of transport everything is at a stone's throw distance.



### CONNECTIVITY

Azad Nagar Metro Station	0.34 km
S.V Road	0.71 km
Andheri Railway Station	1.00 km
Western Express Highway	2.86 km



### HEALTHCARE

Belle Vue Nursing Home	1.00 km
Kokilaben Dhirubhai Ambani Hospital	1.91 km



### ACADEMICS

Bhavan's AH Wadia High School	
St.Blaise High School	0.71 km
Sardar Patel Engr. College	0.77 km
Bhavan's College	0.80 km
Rajhans Vidyalaya	0.90 km
S.P. Jain College	0.93 km
	1.00 km

### SHOPPING AND ENTERTAINMENT



PVR Cinemax	
Navrang Cinema	2.03 km
Star Bazaar	0.33km
Fun Republic	1.41 km
Infinity Mall	2.00 km
	2.64 km

### RESTAURANTS



Garden Court Restaurant	
Pizza Express	0.50 km
Aromas of China	0.50 km
	1.40 km



### CLUBS AND HEALTH CENTRE

Andheri Sports Complex	0.90 km
The Club	2.40 km
YMCA	0.90 km



### AIRPORTS

Domestic	4.09 km
International	5.07 km



### WORKPLACES

Mindspace	9.06 km
Laxmi Industrial Estate	2.33 km
MIDC/SEEPZ	4.96 km
BKC	11.70 km

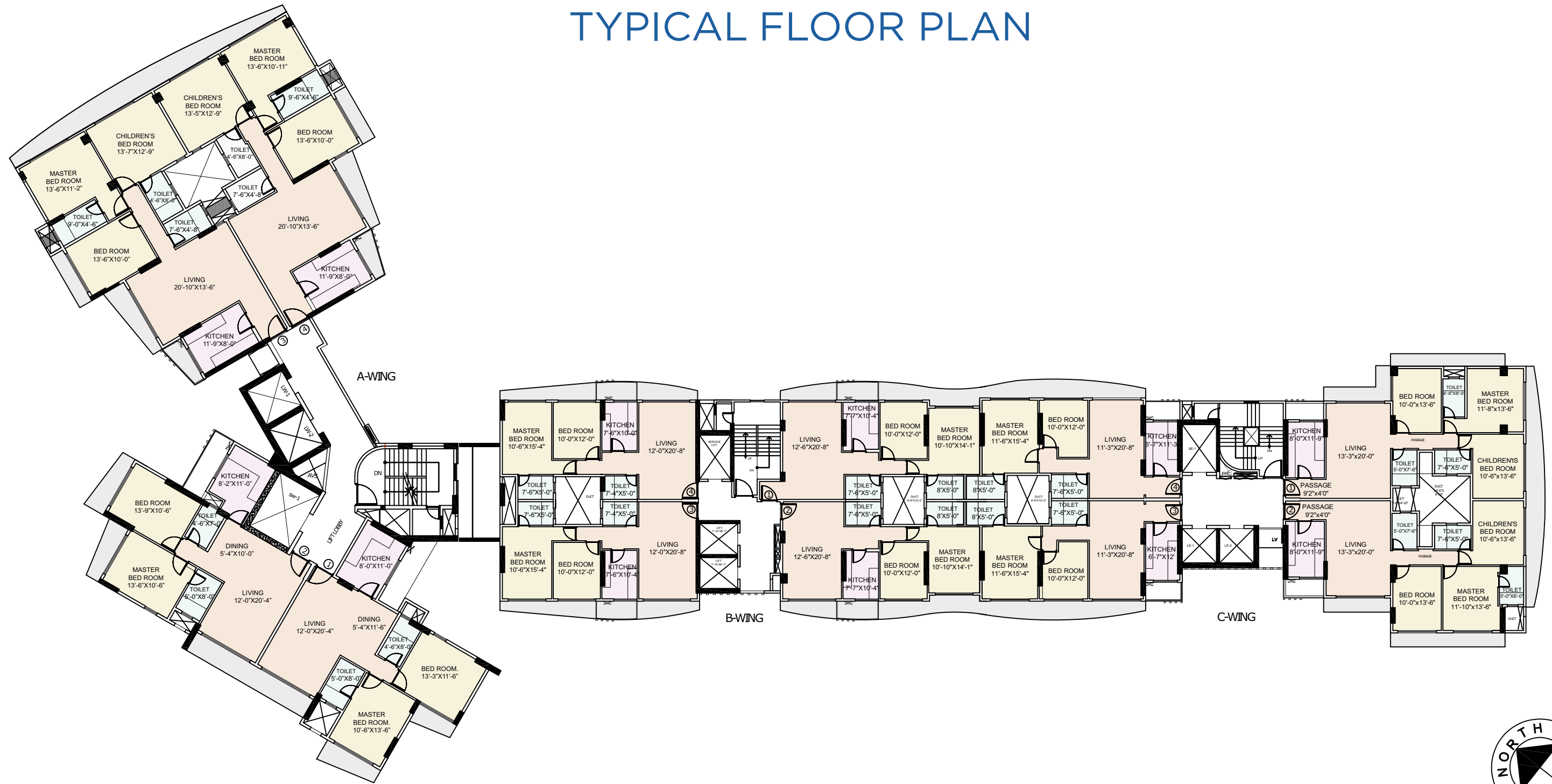


### PLACES OF WORSHIP

Jain Mandir	
Ram Mandir	1.05 km
Jain Upashray	0.63 km
St.Blaise Church	1.04 km
Gurudwara	0.74 km
	3.79 km



# TYPICAL FLOOR PLAN



**A-WING**

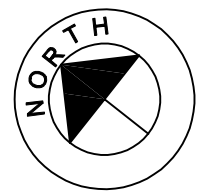
**B-WING**

**C-WING**

FLAT NO.	CONFIGURATION	RERA CARPET AREA (Sq.Ft.)	RERA CARPET AREA (Sq.M.)
1	2 BHK	807	75.01
2	2 BHK	782	72.63
3	3 BHK	1094	101.67
4	3 BHK	1092	101.44

FLAT NO.	CONFIGURATION	RERA CARPET AREA (Sq.Ft.)	RERA CARPET AREA (Sq.M.)
1	2 BHK	801	74.45
2	2 BHK	783	72.70
3	2 BHK	778	72.28
4	2 BHK	777	72.14

FLAT NO.	CONFIGURATION	RERA CARPET AREA (Sq.Ft.)	RERA CARPET AREA (Sq.M.)
1	3 BHK	1037	96.38
2	3 BHK	1025	95.26
3	2 BHK	774	71.91
4	2 BHK	769	71.45



The above rendered plan is artist's conception and for illustration purpose only unless otherwise mentioned. All colours, furniture, fixtures shown are for aesthetic representation purpose only and are not part of the flat offered for sale.



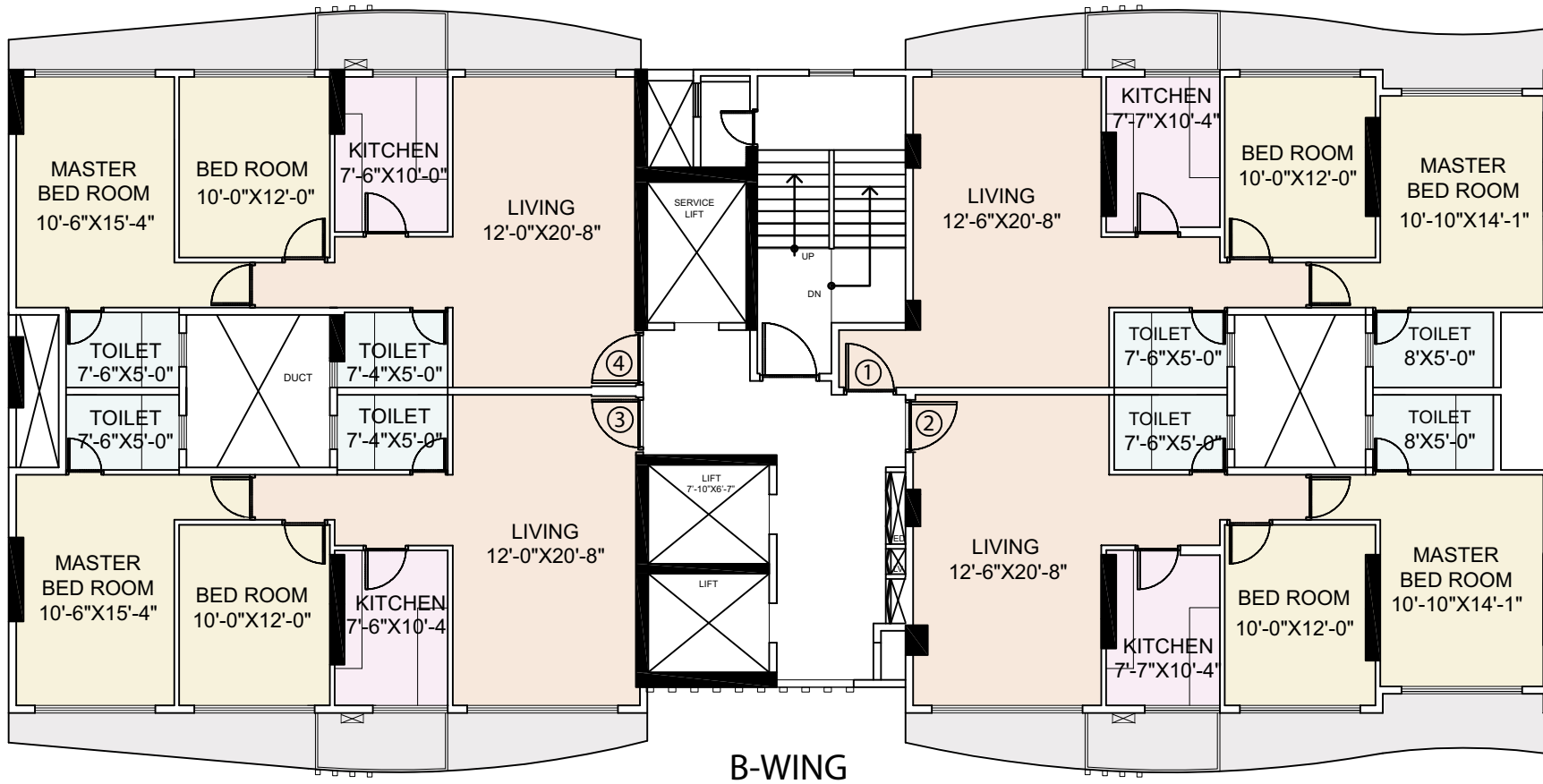
## A - WING

FLAT NO.	CONFIGURATION	RERA CARPET AREA (Sq.Ft.)	RERA CARPET AREA (Sq.M.)
1	2 BHK	807	75.01
2	2 BHK	782	72.63
3	3 BHK	1094	101.67
4	3 BHK	1092	101.44



The above rendered plan is artist's conception and for illustration purpose only unless otherwise mentioned. All colours, furniture, fixtures shown are for aesthetic representation purpose only and are not part of the flat offered for sale.

# B - WING



B-WING

FLAT NO.	CONFIGURATION	RERA CARPET AREA (Sq.Ft.)	RERA CARPET AREA (Sq.M.)
1	2 BHK	801	74.45
2	2 BHK	783	72.70
3	2 BHK	778	72.28
4	2 BHK	777	72.14

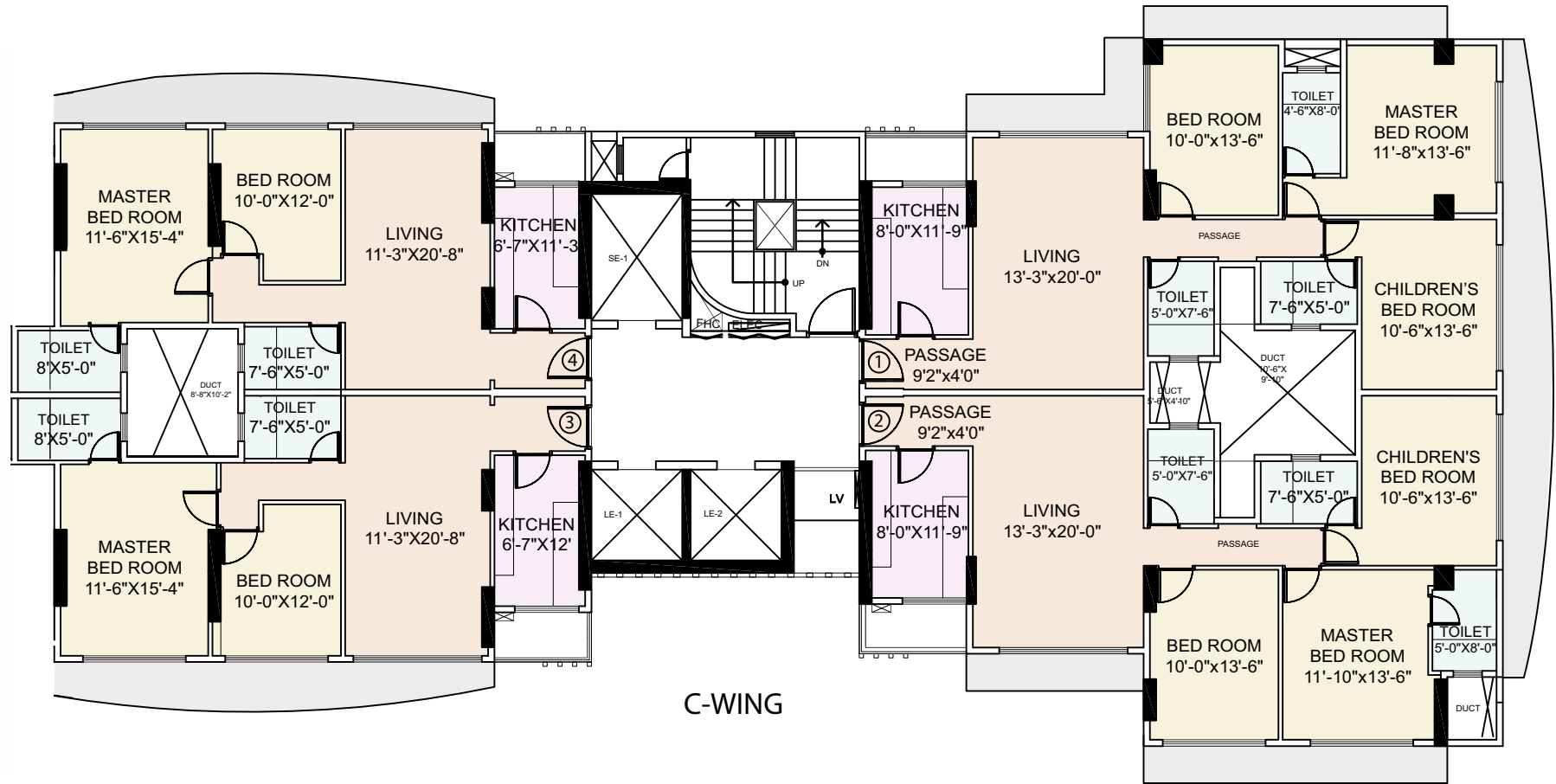


B-WING



The above rendered plan is artist's conception and for illustration purpose only unless otherwise mentioned. All colours, furniture, fixtures shown are for aesthetic representation purpose only and are not part of the flat offered for sale.

# C - WING



C-WING

FLAT NO.	CONFIGURATION	RERA CARPET AREA (Sq.Ft.)	RERA CARPET AREA (Sq.M.)
1	3 BHK	1037	96.38
2	3 BHK	1025	95.26
3	2 BHK	774	71.91
4	2 BHK	769	71.45



C-WING



The above rendered plan is artist's conception and for illustration purpose only unless otherwise mentioned. All colours, furniture, fixtures shown are for aesthetic representation purpose only and are not part of the flat offered for sale.





## PODIUM AND ROOF-TOP AMENITIES INCLUDE:

- Swimming Pool
- Children's Pool
- Gymnasium with Fitness Centre
- Multi Purpose Court
- Skating Rink
- Jogging Track
- Yoga Court
- Children's Play Area
- Amphitheatre
- Open Air Gymnasium
- Landscaped Garden
- Recreational Open Space
- Retail Zone





FULLY AIR-CONDITIONED MAIN ENTRANCE LOBBY





SWIMMING POOL WITH DECK

# APARTMENT SPECIFICATIONS

## Living / Dining and Bedrooms

- Good quality vitrified tiles for flooring and skirting
- Plastic emulsion paint for walls and ceiling

## Kitchen

- Good quality vitrified tiles for flooring, skirting and dado
- Plastic emulsion paint for ceiling
- Good quality granite platform with the stainless steel sink
- Provision for piped gas

## Toilets and Bathrooms

- Good quality anti-skid vitrified tiles for all bathrooms
- Good quality vitrified tiles for dado
- Plastic emulsion paint for ceiling
- Geyser in all bathrooms
- CP and Sanitary fittings provided of reputed brand

## Doors & Windows

- Main Door: Solid core fire rated door with veneer finish teak wood
- Bedroom Door: Solid core flush door with wood finish laminate
- Heavy-duty aluminum sliding windows made from specially designed and manufactured sections

## Electrical

- Concealed wiring for entire apartment
- Ample electrical points with branded switches
- Electrical points provided for all essential appliances such as television, air conditioner, telephone, geyser, washing machine, water purifier, exhaust fans, etc.

## Wi-Fi System

- Provision for wifi system in the apartment

## Security & Home Automation

- Intercom facility and video door phone with connectivity to the central security system
- Gas leak detector in kitchen and fire sprinkle provided





# EXTERNAL FACILITIES

Exclusive retail zone

Grand airconditioned entrance lobby

100% power backup for common areas and elevators

Hi-tech automatic elevators in each wing

Ample parking space provided in basement and podium level

Common bathroom provided at mid-landing level of residential floors

CCTV system provided for parking floors, podium level and all residential floors





Naman Realty, the real estate arm of Shree Naman Group is an established leader in real estate industry with over two decades of experience in creating world - class properties that are true epitomes of quality and precision.

We have constructed more than 1.8 million square feet of mixed-use development and committed to develop 4 million square feet across the country. Our success speaks a lot about the technical, managerial, financial competence and the quality of manpower we possess.

Over the years, we have been awarded several accolades which stand a testimony to the group's commitment and dedication towards perfection.

We are sure that our positive beliefs and passionate endeavours will contribute to the glorious growth of India.

## AWARDS AND ACCOLADES

OUR ACHIEVEMENTS ARE THE RESULT OF OUR BELIEFS



COMMERCIAL PROPERTY OF THE YEAR 2017  
BY ABP NEWS - **NAMAN MIDTOWN**



DEVELOPER OF THE YEAR 2017  
BY ACCOMMODATION TIMES - **SHREE NAMAN GROUP**



COMMERCIAL PROJECT OF THE YEAR 2017  
BY REALTY PLUS - **NAMAN MIDTOWN**



HALL OF FAME 2016  
BY CONSTRUCTION WEEK - **JAYESH SHAH**

## Completed Projects

Residential :  
Saarathi - Girgaon  
Naman Residency - BKC  
Shree Naman Towers - Kandivali

Commercial :  
Naman Plaza - Kandivali  
Naman Centre - BKC  
Naman Corporate Link - BKC  
Naman Chambers - BKC  
Naman Midtown - Elphinstone  
Trent House - BKC

Hospitality :  
Sofitel - BKC

Healthcare :  
Namaha - Kandivali

## Ongoing Projects

Residential :  
Naman Habitat - Andheri West  
Naman Premier - Andheri East

Hospitality :  
Check Inn - Kalina

## Upcoming Projects

Residential :  
Gated Community Complex - Matunga  
Naman Xana - Worli  
Sea Facing Super Luxury Apartments - Nepean  
Sea Road  
Mega Township Development - Pune

Commercial :  
EL-25 - Mahape

Hospitality :  
Resort Development - Goa  
Resort Development - Lonavala



REAL ESTATE



HOSPITALITY



HEALTHCARE



FOOD & BEVERAGE



SECURITIES & FINANCE



ENERGY



TRAVELS

SHREE  
**NAMAN**  
— G R O U P —

Shree Naman Group, since its inception in 1993, under the leadership of visionary Mr. Jayesh Shah, is building new landmarks across wide range of business verticals. Every vertical - Real Estate, Hospitality, Healthcare, Food & Beverages, Financial Services, Fleet Services and Energy - is unified by our quest for innovation, quality, exclusive designs and aesthetics based on the foundation of integrity.

We strive to be a socially responsible group and strongly believe in business which is beneficial for the people by large. We believe in being green and environment friendly, observe and promote ethical business practices and invest in corporate social responsibility.

A determined will to stay true to commitments.

A resolute intent to make things happen.

At Shree Naman Group, Integrity is not just a value - it is our way of life.