



WHERE THE WORLD REVOLVES AROUND YOU

RISHABRAJ   
SUJAI





RISHABRAJ  
**SUJAI**  
A PROJECT BY  
  
**H. RISHABRAJ**

ARTIST'S IMPRESSION

EVERYDAY LIVING,  
REFINED LIVING



## WHERE DREAMS COME HOME...

Come & feel good with us, at Rishabraj SUJAI, homes that accessorize living in joy with style and comfort. A happy match in every which way, we present to you homes with a happy heart that are bathed in laughter and laced with luxury.

The project comprises of a ground + 1 commercial facade which is topped with 8 upper floors of beautifully appointed, delightfully spacious 1 & 2 BHK homes. Homes designed in a way that there is cross ventilation and lot of sunshine for you and your family to bask in. Along with homes fitted with unique amenities to ensure a great living experience, Rishabraj SUJAI also offers an excellent location promising its residents a pleasant and delightful lifestyle. Located in Malad East on Rani Sati Marg, the apartment tower bears close proximity to the railway station, the W.E Highway and upcoming metro stations. It also enjoys easy access to excellent medical and educational facilities and religious avenues, thereby uniquely catering to your every need.



ARTIST'S IMPRESSION



## WHERE YOUR WORLD FEELS COMPLETE

### EXTERNAL FACILITIES

- Designer Entrance Lobby.
- Well Equipped Gymnasium
- Terrace Garden
- High speed elevators of a reputed brand.
- Chequered tile / pavers in the entire compound.
- Ample Car Parking.
- CCTV surveillance in common area.
- Advance fire fighting system as per approvals.
- Earthquake resistant construction.

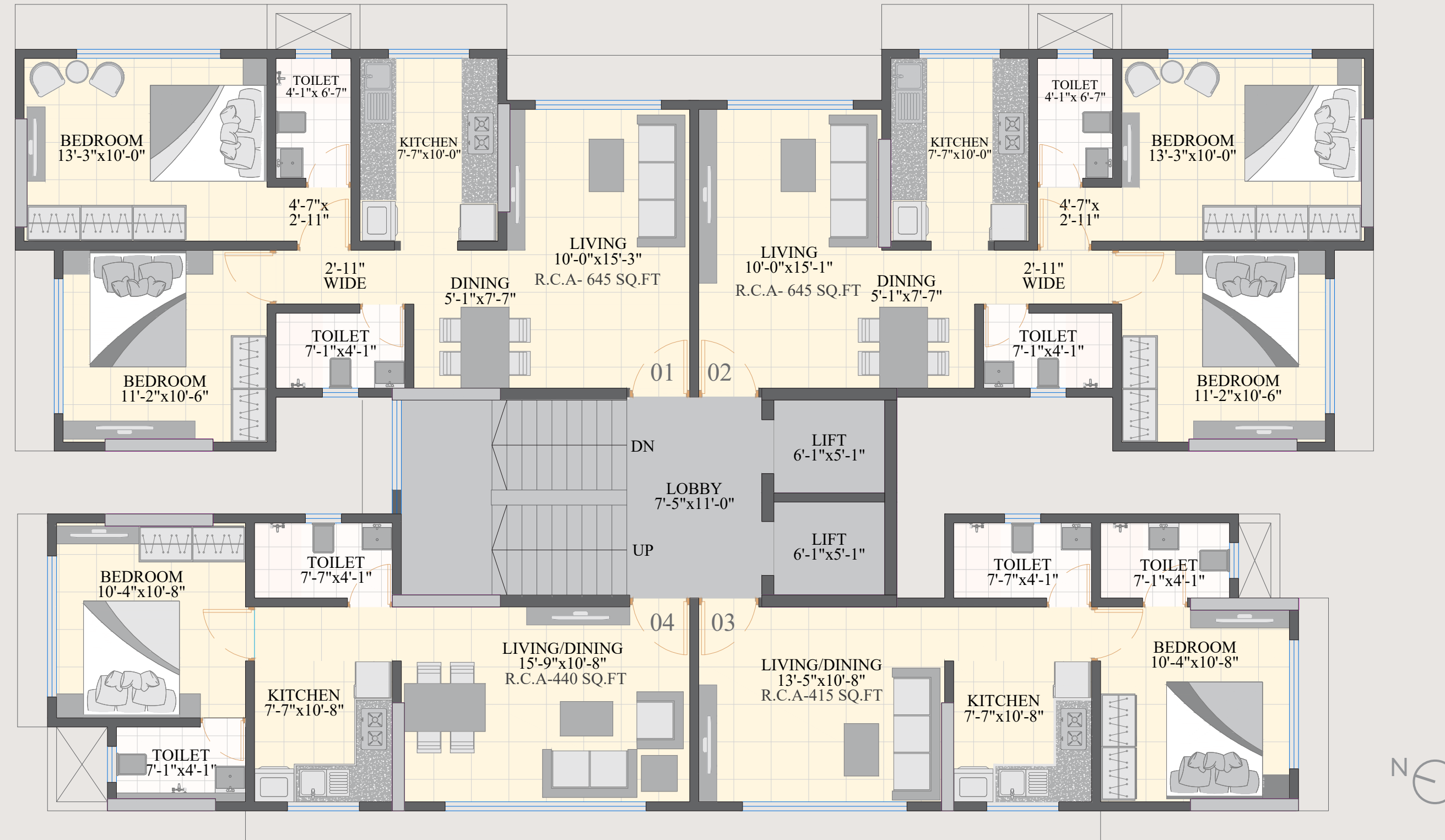
### INTERNAL AMENITIES

- Vitrified flooring in entire flat.
- Colour anodized Aluminium sliding windows with tinted glass and marble frame.
- M. S. Safety Railings on external windows in Living and Bedroom.
- Granite double kitchen platform with Stainless steel sink.
- Concealed copper wiring with Goldmedal switches and accessories with E.L.C.B.
- Designer bathroom with anti skid ceramic tile flooring and full height dado.
- Concealed plumbing with superior quality sanitaryware and Jaquar fittings or any similar brand.





EIGHTH FLOOR PLAN







ARTIST'S IMPRESSION

ENJOY EVERY MOMENT....

LIVE IT, LOVE IT

Fall in love with a slow pace of life, kick back in leisure and rediscover yourself in the folds and frills of nature. Escape the ordinary and resist the mundane with Rishabraj SUJAI. Enhance your everyday living with luxuries like an exquisitely designed rooftop terrace garden that comes with relaxing sit out areas and an expansive play area, that add plenty of cheer and thrill to your and your loved ones' daily routine.



STOCK IMAGE





OTHER ONGOING PROJECTS



**RISHABRAJ RAMESHWAR** - Borivali W  
MahaRera No. P51800030723



**RISHABRAJ AGNEL** - Borivali W  
MahaRera No. P51800030530



**RISHABRAJ MONALISA** - Borivali W



**RISHABRAJ SURAJ** - Borivali W  
MahaRera No. P51800029277



**RISHABRAJ CLASSIC** - Malad E  
MahaRera No. P51800027149



**RISHABRAJ HAWA MAHAL** - Malad E  
MahaRera No. P51800027606



**H. RISHABRAJ**

BUILDERS & DEVELOPERS

ENERGIZING HAPPINESS!

[www.hrishabraj.com](http://www.hrishabraj.com)

The Rishabraj brand is synonymous with goodwill, quality, customer satisfaction, and trust. And with Mr. Harrish Kumar Jain spearheading the company into carving its own niche in the redevelopment space, the Group today has about a million square feet under various stages of planning and execution. Having completed 18+ projects over the past few years, the company is known to deliver on promises and in turn, deliver smiles to the faces of every valued client.



**LET'S RESTART**

COMMITMENTS UNCOMPROMISED

AN INITIATIVE BY H. RISHABRAJ GROUP

[www.letrestart.com](http://www.letrestart.com)

The innovative genius of H Rishabraj gave birth to - Let's Restart, the solution provider for delayed and stalled projects.





Site Address : Rishabraj Sujai, Rani Sati Marg, Gautam Nagar, Malad East, Mumbai 400097.

A Project by



# H. RISHABRAJ

BUILDERS & DEVELOPERS

ENERGIZING HAPPINESS!

Developers : **RISHABRAJ ESTATE DEVELOPERS PVT. LTD.**

Corporate Address : 103, Jai Tirth, Daulat Nagar, Road No 10, Borivali (East), Mumbai - 400066

Ph : 022 2893 4545 | 2893 4747 E : sales@hrishabraj.com W : www.hrishabraj.com



MahaRera number : P51800031075 (<https://maharera.mahaonline.gov.in>)

A Proud Member of



Disclaimer : The plans, specifications, images and other details herein are only indicative and the developer's reserve their rights to change any of all of these in the interest of the development. This printed material does not constitute an offer and or contract any type between the developer and the recipient. Any purchase of this development shall be governed by the terms and conditions of the agreement for sale/ lease entered into between parties and no detail mentioned in this printed material shall in any way govern such transaction.