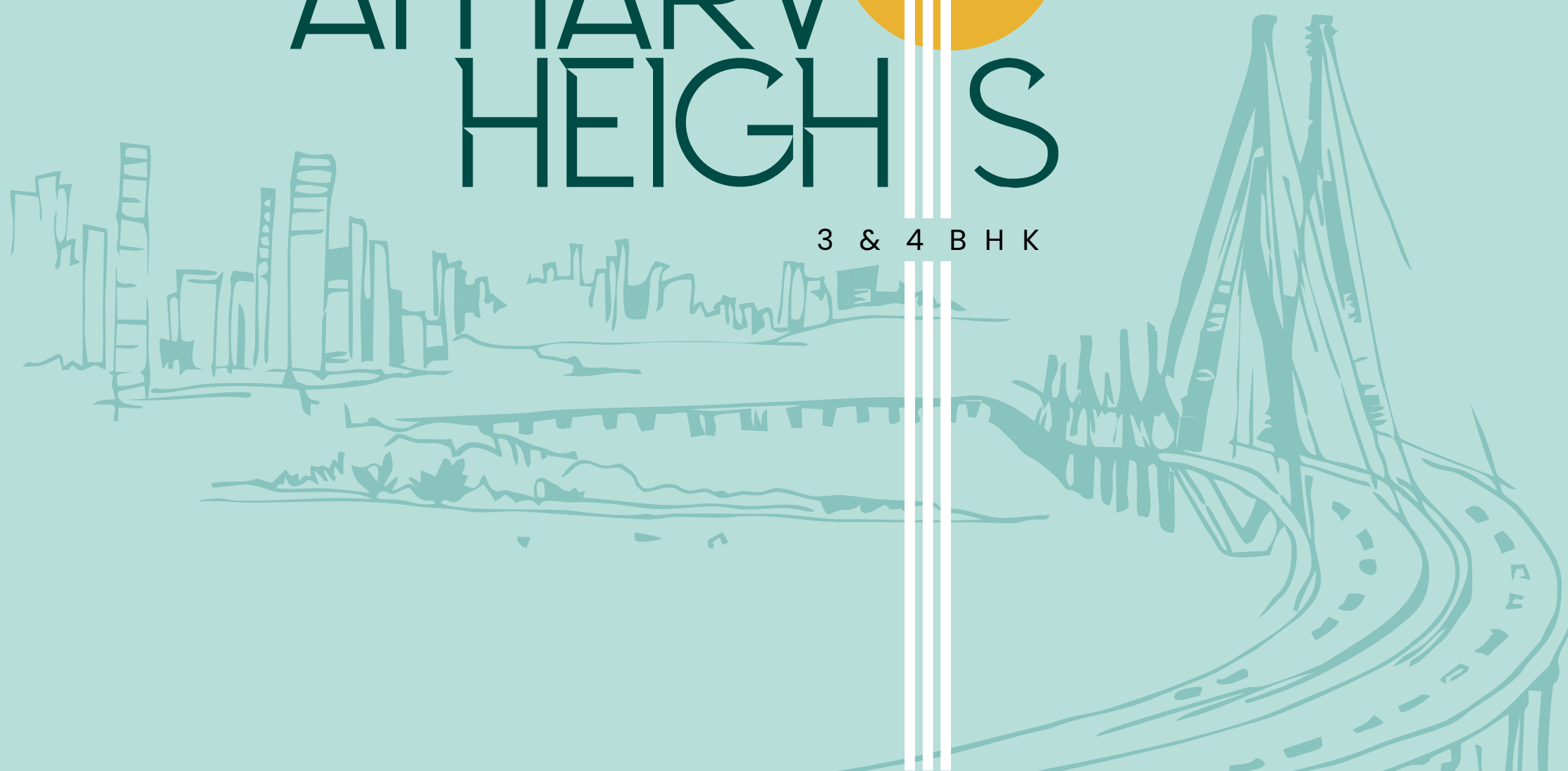


A HIGHER  
QUALITY OF LIVING



ATHARV  
HEIGHTS

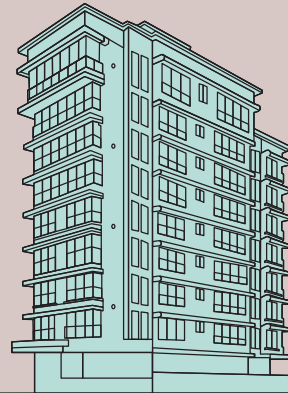
3 & 4 BHK



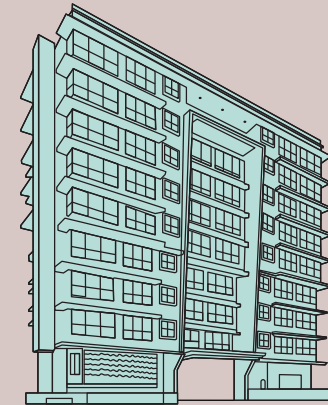
Atharv Group has developed a distinct niche for itself as a real estate developer and has earned a reputation of being reliable, innovative and quality conscious.

By offering a cluster of masterpieces since its inception, Atharv Group has excelled in elevating the living standards of the public and strive to continue to do so in the coming years.

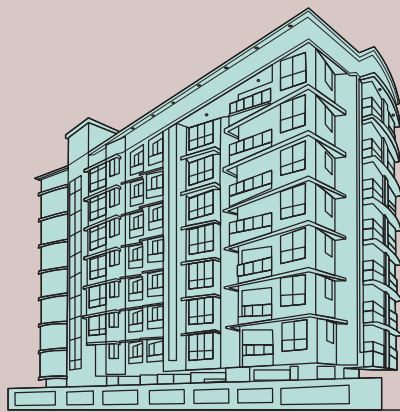
2014  
Atharv Rosewood



2020  
Atharv Saraswati



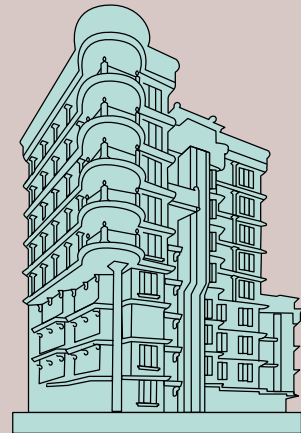
2016  
Atharv Shagun



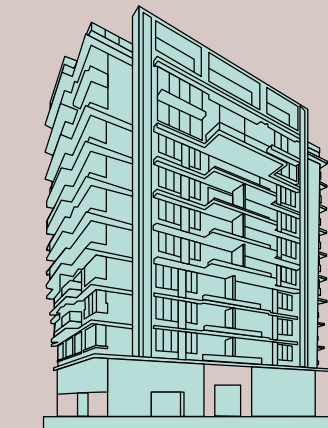
2021  
Atharv Navasamaj



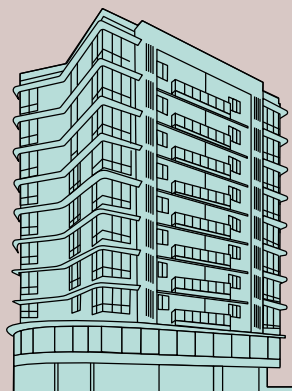
2018  
Atharv Palace



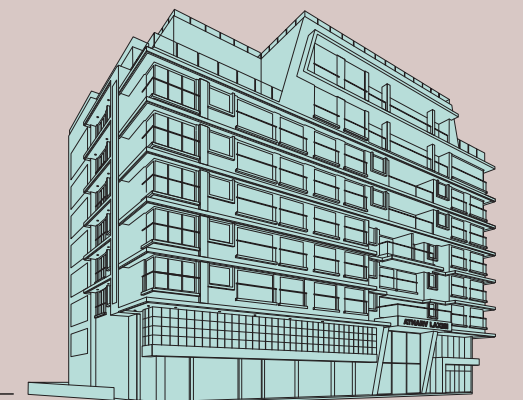
2021  
Atharv Murli



2019  
Atharv Pride



2022  
Atharv Laxmi





# AN EPITOME OF LUXURY TO LEAD YOUR WAY OF LIFE

A collection of 11 Floors with 42 Luxury Flats in a central & tranquil location. Through the gates of this development, discover a modern living that exists in perfect harmony with its beautiful surrounding.



TAKE A SEAT &  
ENJOY THE VIEW.

**Tired of the hustle and bustle of Mumbai city?**  
Well at Atharv Heights, unwind with fresh breeze in your balcony.



# Terrace Garden

At Atharv Heights, We have a beautifully designed Terrace Garden for you, where you can easily sit & enjoy with your friends, family or neighbor.



# Yoga Room

We believe health is the real wealth  
So at Atharv Heights, We are giving you a luxurious yoga room to keep you healthy and fit.



# Indoor Game

So many amazing choices for indoor games that you would just want to stay inside and have fun with your friends and family.



# Luxurious Lobby

Enter into the aesthetic grandeur of our luxurious lobby at Atharv Heights



# Living Room

At Atharv Heights, each room is spacious and tailored as per the needs of every family.

# Bed Room

At Atharv Heights wake-up to a truly mesmerizing view of Vile Parle.

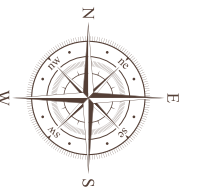


# AUTOMATIC TOWER PARKING

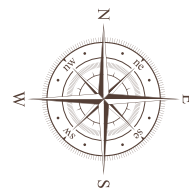
At Atharv Heights we aim to maximise the parking by providing a tower parking system for your ease and convenience .



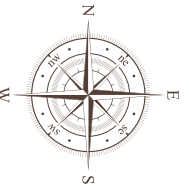
## G R O U N D F L O O R P L A N



# 7<sup>th</sup> FLOOR



# 10<sup>th</sup> FLOOR

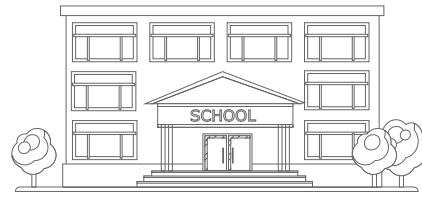




# SURROUNDING LOCATIONS

## Hospitality

Sahara Star  
Taj  
Ibis  
JW Marriot  
The Orchid



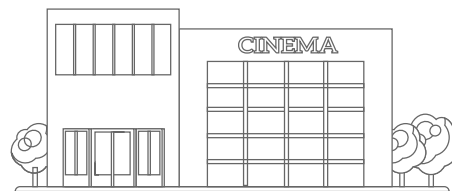
## Educational Institutions

Sathaye College  
Dahanukar College  
Parle Tilak Vidyalyaya  
Mahila Sangh  
CNMS School  
Jamnabai Narsee School  
NM College  
Mithibai College



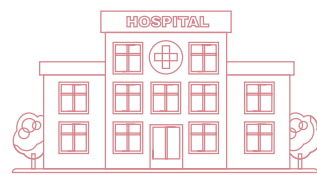
## Retail & Entertainment

Godrej Nature's Basket  
Agarwal Market  
Suncity  
Bahar Cinema  
PVR  
Bhaidas Hall  
Dinanath Natyagraha  
Big Bazaar  
Sahakar Bhandar



## Hospitals

Fourcare  
Nanavati  
Cooper  
KLS  
Wagh Maternity

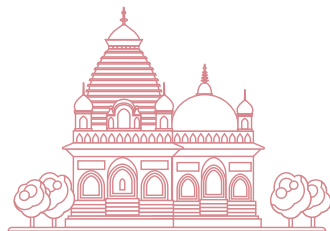


## Recreation

Lokmanya Seva Sangh  
Prabodhankar Thakre  
Sports Club  
Dubashi Play Ground  
PTVA Cricket Academy

## Religious Avenues in the Vicinity

Parleshwar Mandir  
Chintamani Jain Derasar  
Ram Mandir  
Shri Mahalaxmi Mandir  
Swami Samarth Math  
Datta Mandir



International & Domestic Airport

Railway Station



Western Express Highway

# LOCATION

JUHU BEACH



LOCATION MAP



Developers: Atharv Infra LLP  
MAHARERA NO: P51800034323

---

Site Address

Atharv Heights, Malviya road, Vile Parle East , Mumbai 400057

Corporate Office

Atharv house, Nariman Road, Vile Parle East, Mumbai - 400057.

Tel: 022 2612 5444 /3 | Mob.: 77388 66111  
[www.atharvrealty.com](http://www.atharvrealty.com) | [sales@atharvrealty.com](mailto:sales@atharvrealty.com)

---

Disclaimer: Unless otherwise stated, all the images, visuals, materials and information contained herein are purely creative/artistic concepts and may not be actual representations of the product and/or any amenities. None of the above may be construed to form any basis of, or serve as an inducement/solicitation or invitation for payment of any advance and/or deposit, to be made by a prospective customer, under relevant provisions of law or otherwise. The plans, designs, dimensions and elevations are as per current sanctioned plans and approvals, specifications, amenities and facilities will be set out in the agreements for sale and ancillary documentation and the images are artistic impressions and purely for representational purposes. The same may be subject to changes/revisions/alterations in terms of approvals, orders, directions and/or regulations of the concerned/relevant authorities, and/or for compliance with laws/regulations in force from time to time. In view of the above, and in line with our customer policies, we may change/alter the above in consonance with approvals, orders, directions, applicable laws, regulations, etc. The furniture, furnishings, fixtures, fittings, electronic goods, accessories and any other item displayed in floor plan are only indicative in nature. The company/firm/promoter/developer is not liable or required to provide the furniture, furnishings, fixtures, fittings, electronic goods, accessories and any other item as displayed in floor plan. Minor variations (+/-3%) in actual carpet area may occur on account of column position.