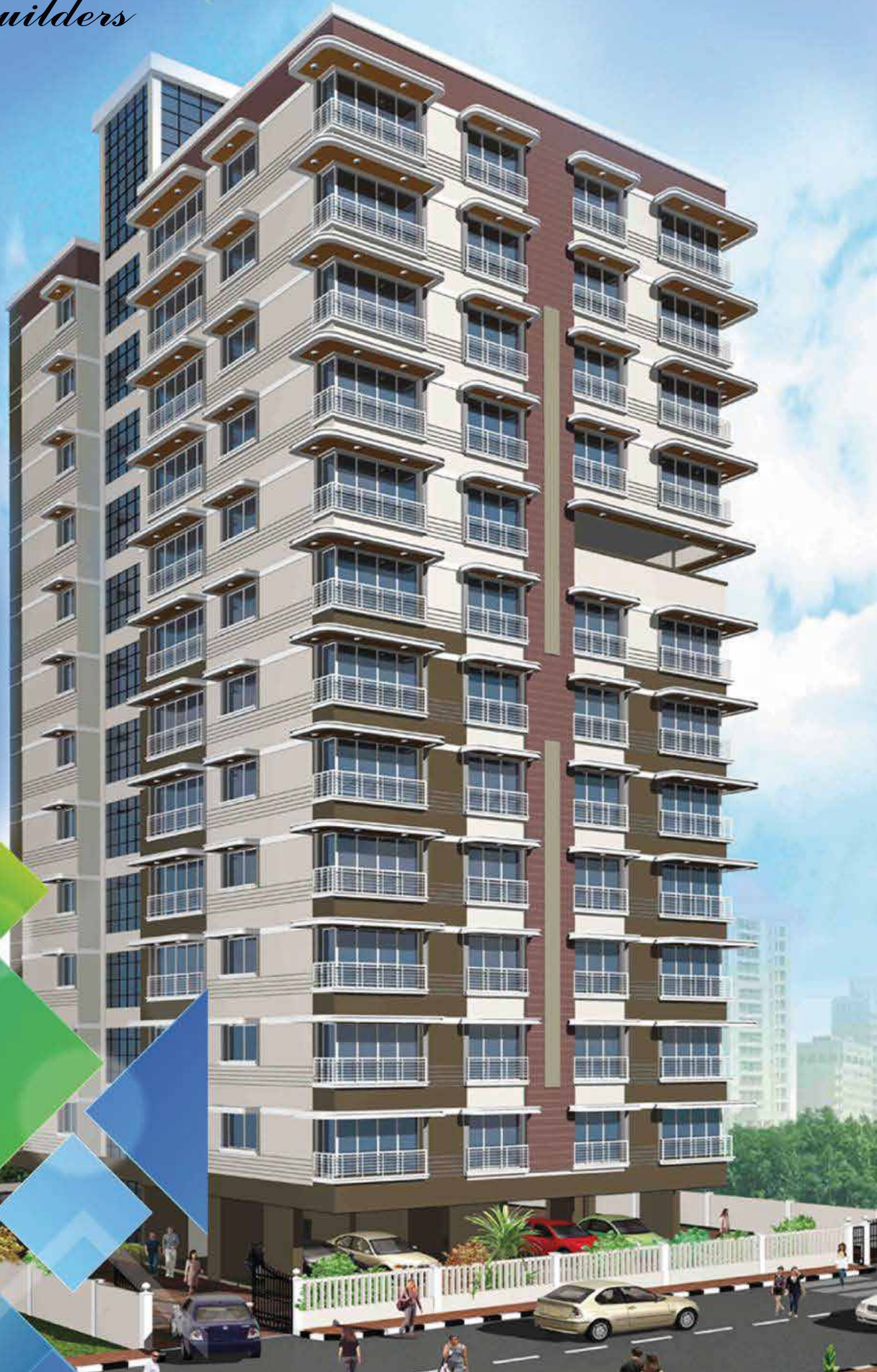


J
Jay Builders



JAY-CELESTIAL

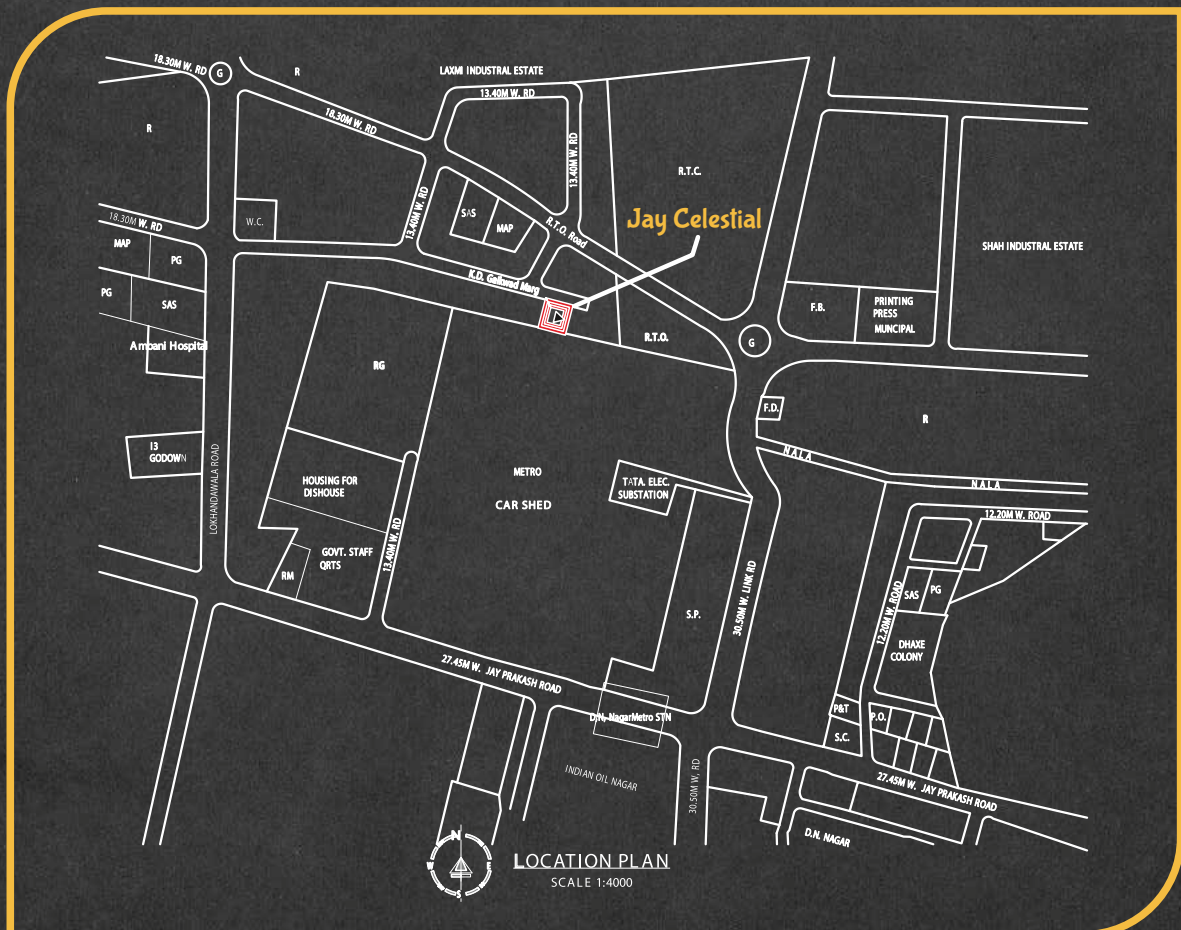
PROJECTS HIGHLIGHTS:

Located in the premium residential area of Lokhandwala, Andheri(West), JAY CELESTIAL makes your dream home a reality!

Celestial is located at preferred residential location of Andheri West with close proximity to various lively attractions & sport's complexes like Andheri Sports Complex, Gaikwad Sports Club, Citi Mall, Infiniti Mall, Lokhandwala Shopping Lane with close proximity to various Corporates, Media houses, Bank's, ,Schools, etc with excellent connectivity to Railway Station, Upcoming metro station, etc which makes this project a perfect home buyer's choice.

Although located in the heart of the bustling metropolis Celestial provides you with a serene abode with Fully equipped Gymnasium, Recreational area, Kids play area with green spaces.

COME HOME TEA SURREAL LIVING!!



Stay Connected With The World



METRO STATION



YOGA



**SENIOR CITIZEN
CORNER**



SCHOOL



HOSPITAL



**GARDAN &
PLAY AREA**



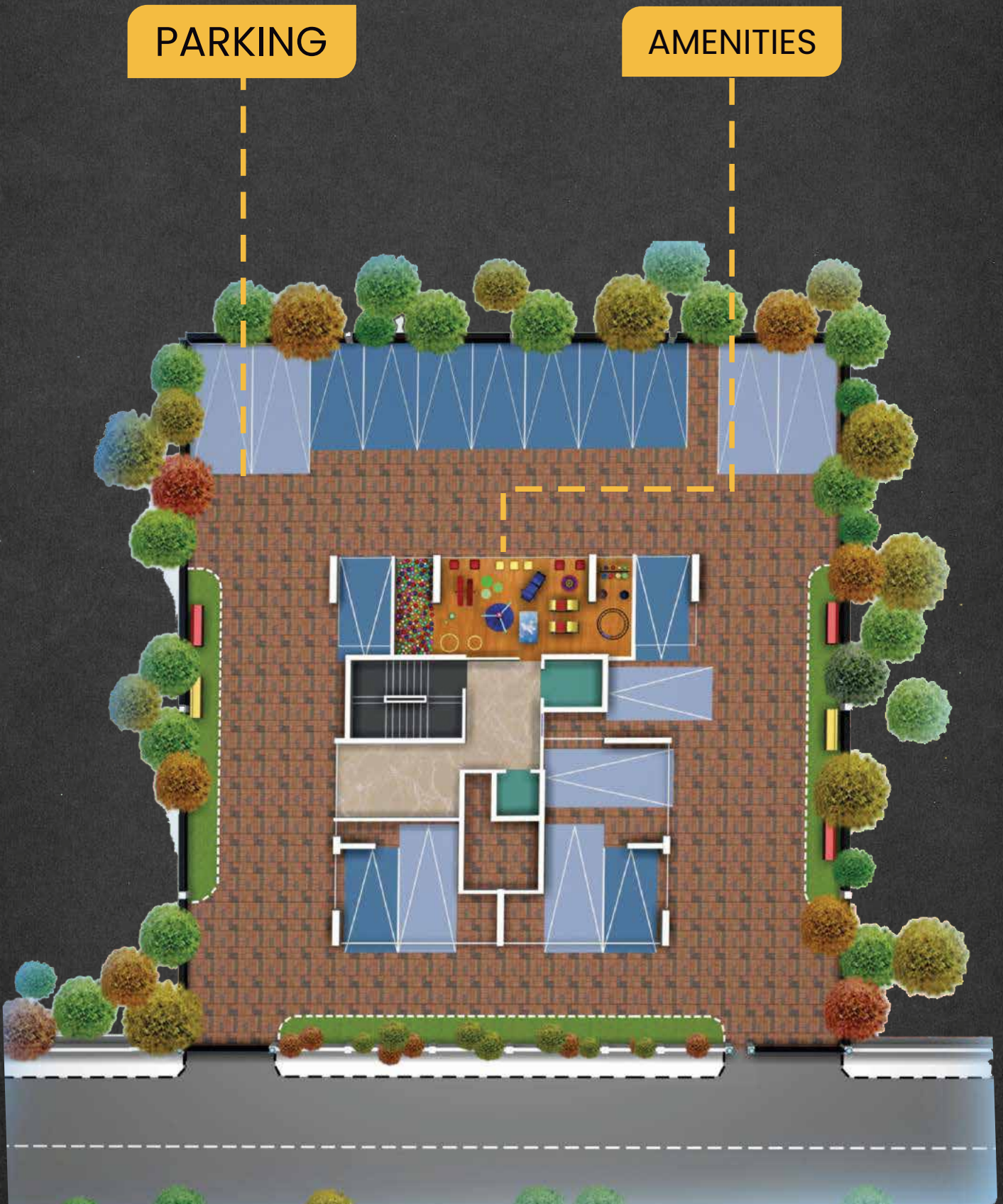
SUPERMARKET

Mode of Commute	Distance (In Km)
Andheri Railway Station	3 Km
Metro Station	0.9 Km
International School	1.2 KM
College	1.8 Km
Market	0.9 Km
Mall	1 Km
Hospitals	0.9 Km
Silver Line beach	2.2 Km
7 bungalow Garden	2 Km
Andheri Sports complex	2.3 KM

GROUND FLOOR PLAN

PARKING

AMENITIES



TYPICAL FLOOR PLAN



Flat Layout



1BHK | 402 sq.ft. (carpet)



2BHK | 640 sq.ft. (carpet)

Internal Amenities: Full Furnished Bathroom with Fittings | Air-Conditioned Bedroom | Tiles | Heavy Hot Pressed laminated Wooden Doors | Modular Switches with Concealed Copper Wiring | Kitchen with platform & sink.

PAST-PROJECTS



Ganaraje Luxuria
Mulund (East)



Gopaldeep Heights
Mulund (East)



Kalyani Apartments



Atmiya Heights

Project : JAY-CELESTIAL (Vidharbha Co.Op. Society)

Site st : R.T.O lane, Near Ambani hospital, Lokhandawala, Anderi (West)

Land Details : Plot bearing No. 30 of C.T.S.No 825 of Village Ambiwali

Plot No. C.T.S : Plot bearing No. 30 of C.T.S.No of Village Ambiwali

Registered Dev Agreement & amp; P.O.A. between Vidharbha Society & amp; Jay Builders