

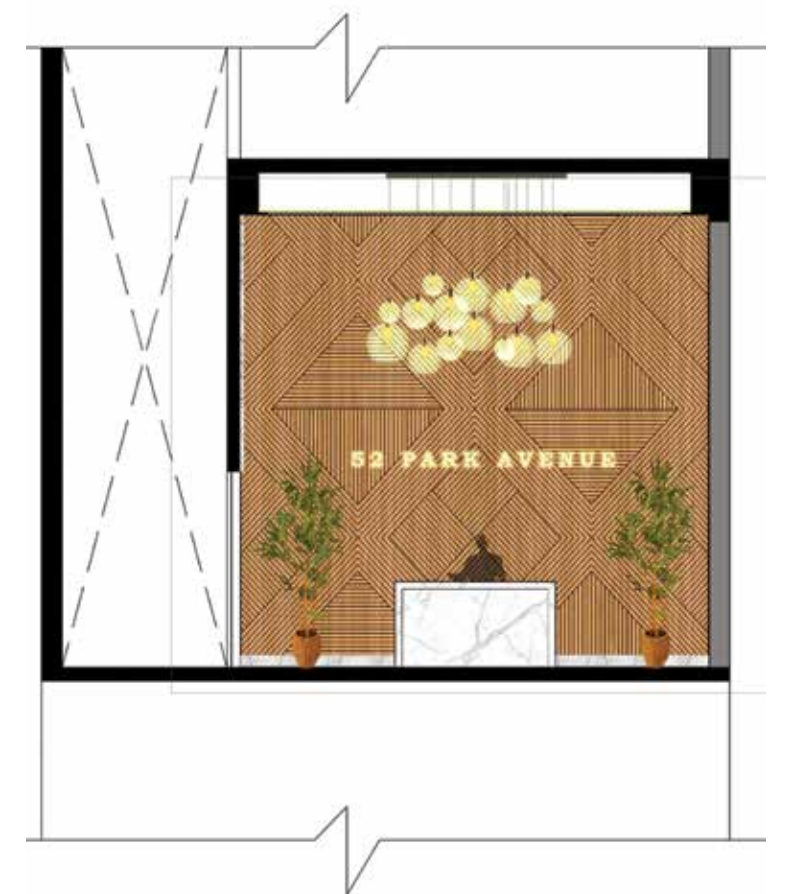


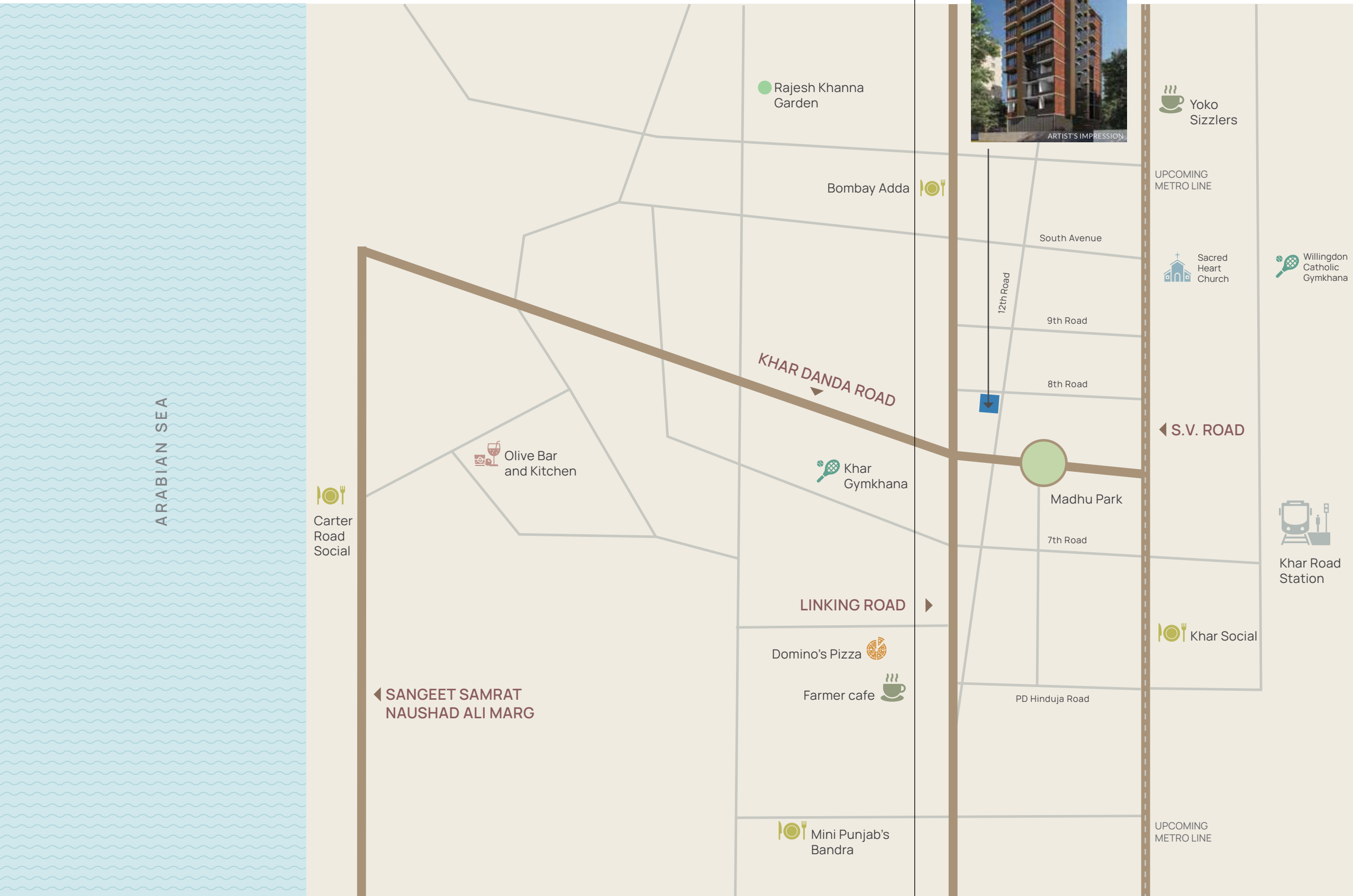
# 52 PARK AVENUE

12TH ROAD, KHAR WEST

## A landmark for living

---





## 52 PARK AVENUE

### Address of exclusivity

A living experience that speaks the language of style and elegance and has its very own story to tell. A story of unfettered aspirations and unstoppable drive, ready to soar and mark the city's skyline with its own distinct stamp. An experience called 52 Park Avenue, where you embrace the fine nuances of luxury living, nestled in the regal environs of a most prime location like 12th road, Khar west. An epicentre of fertile possibilities, it is a privileged call to the chosen few. A glorious address that looms bright with the promise of better and greater things to come. ....

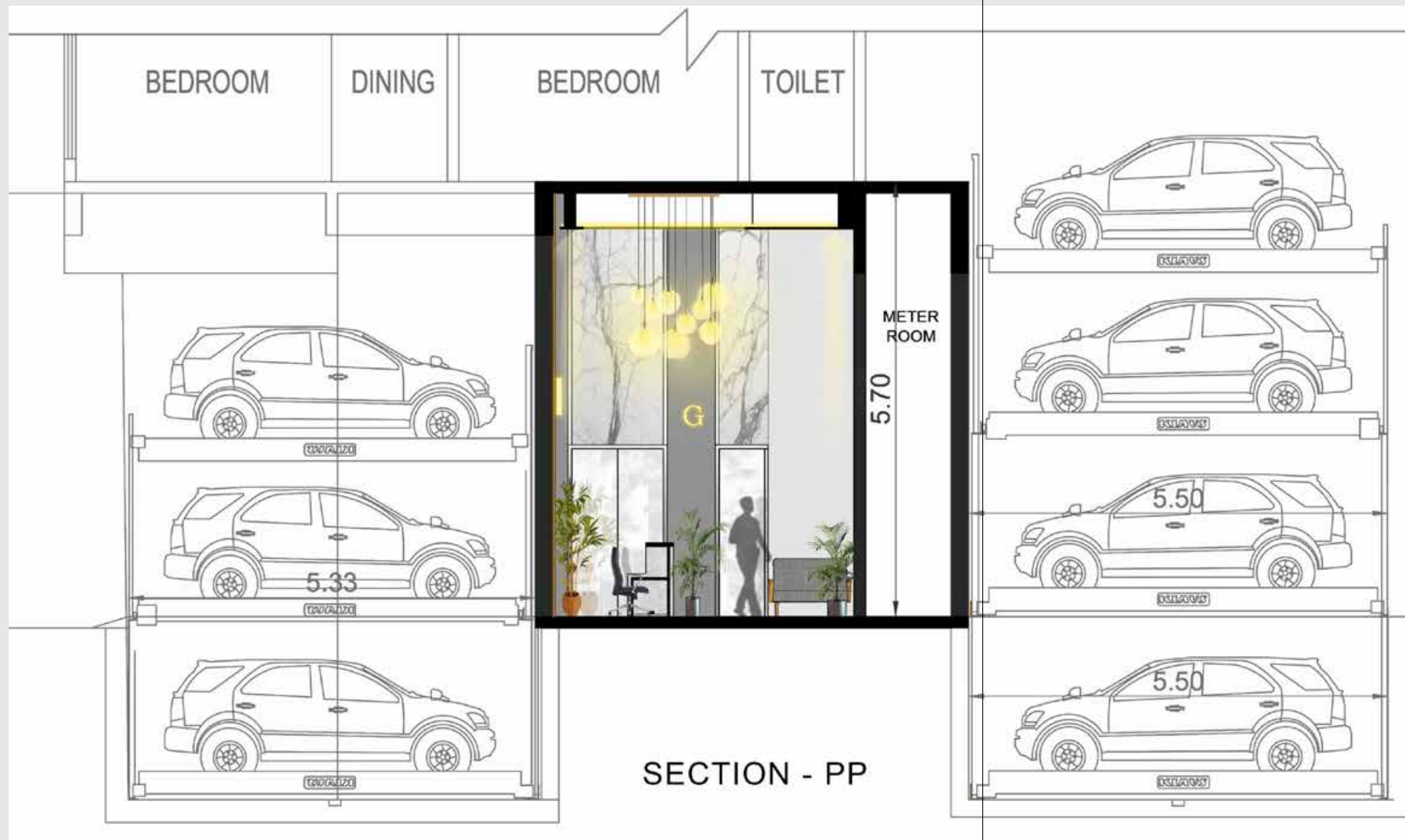
Flaunt your exclusivity with premium classy residences that host well planned lavish spaces coupled with luminous views that flaunt your reign on your very own slice of paradise. A palatial celebration of glorious living, rejoice in the immense grandeur of the view overlooking the glitter and sparkle of the city, cocooned in the lap of luxury.



## Panorama of perfection

A elegant edifice of boundless space, beautiful craftsmanship, exemplary passion and unbridled excellence, 52 Park Avenue is an amalgam of beautiful abodes crafted to deliver the finest that life has to offer to the choicest few.

A symbol of style and stature, it is a magnum opus of a living destination with the panache of a luxe setting, extraordinary design, evolved architectural genius and magnanimous opulence. So rise to the occasion & be a part of this grand celebration of life at 52 Park Avenue in the finest and most prestigious of address.



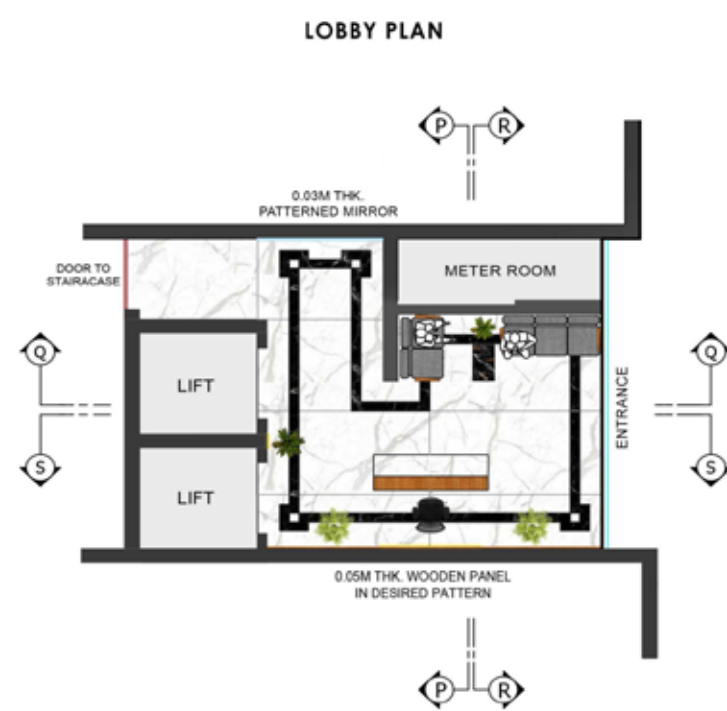
## Zen of indulgence

Your promised world of abundance awaits you...

Where luxury is served to spoil you, we thrive in offering unabashed comfort and convenience at every corner. The car park is well attuned to meet your needs on the go and aptly designed with ample space. So you can forget the world at the gates and enter your lifestyle zone in relaxed elegance.

## Grandeur of arrivals

Cross over into the realm of exclusivity with an arrival that is laced with style and splendour. With an entrance foyer as inviting as it is grandiose, homecoming on every occasion is bound to be an exciting and welcoming affair, not only for you but for anyone with an invite to your inner circle. The glamorous lobby here promises to cast an impressive and lasting first impression on you and your loved ones.



One space,  
another world

---



STOCK IMAGE



FLAT NO	TYPE	RERA CARPET AREA
1	3 BHK	990 SQ.FT.
2	3 BHK	931.5 SQ.FT.

TYPICAL FLOOR PLAN 

12TH ROAD



## An Oasis of Opulence

---



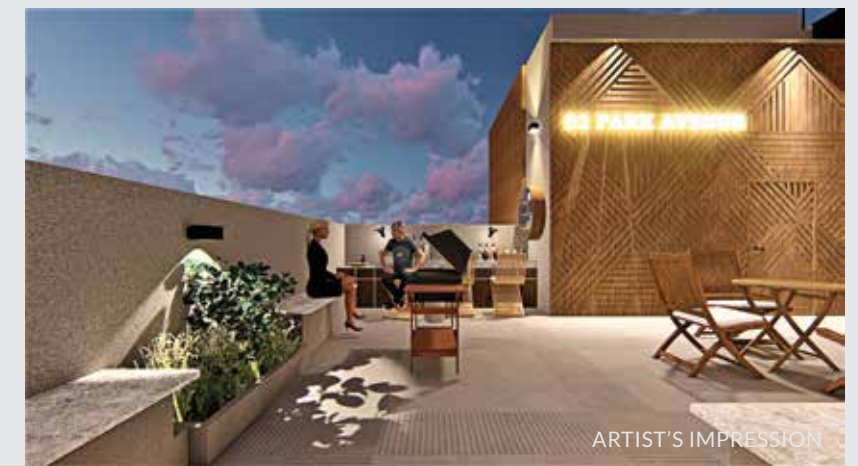
TERRACE FLOOR PLAN ABOVE 9TH FLOOR

COMMON TERRACE



ARTIST'S IMPRESSION

BARBEQUE AREA



ARTIST'S IMPRESSION

FIXED STONE SEATING



ARTIST'S IMPRESSION

WET BAR AREA



ARTIST'S IMPRESSION



ARTIST'S IMPRESSION

## Utopia of escape

Opulence takes on a new form in the form of our terrace garden, a beautiful pocket of recreational space of unprecedented scale and standards. Come to discover just how enriching and full of promise every minute here is. With the stimulating elegance of its landscaped visage, an educated eye for detail, an urban edge and its stunning functionality, the terrace makes for an unforgettable lifestyle statement proving beyond doubt how serenity and luxury can beautifully co-exist.

## Dazzle of distinction

---

### EXTERNAL FACILITIES

- Designer Entrance Lobby.
- Terrace Garden
- High speed elevators of a reputed brand.
- Chequered tile / pavers in the entire compound.
- Puzzle & Tower Parking.
- CCTV surveillance in common area.

### INTERNAL AMENITIES

- Vitrified flooring in entire flat.
- Colour anodized Aluminium sliding windows with tinted glass and marble frame.
- Modular Kitchen
- Granite double kitchen platform with Stainless steel sink.
- Concealed copper wiring with Goldmedal switches and accessories with E.L.C.B.
- Designer bathroom with anti skid ceramic tile flooring.
- Concealed plumbing with superior quality sanitaryware and Jaquar fittings or any similar brand.



## Other Projects



**BLUE LOTUS - Santacruz W**  
MahaRera No. P51800033826



**RISHABRAJ SAMAJ DARSHAN - Kandivali W**  
MahaRera No. P51800010479



**RISHABRAJ PARKVISTAS - Borivali W**  
MahaRera No. P51800033442



**63 GOLD MEDAL AVENUE - Goregaon W**  
MahaRera No. P51800027330



Trust, quality, customer satisfaction, and goodwill are values that are today synonymous with the Rishabraj brand. With Mr. Harrishkumar Jain at the helm of the company, the group has succeeded in translating millions of wishes into reality. The earnest dedication and rising momentum of the company has resulted in the group setting new yardsticks in the redevelopment niche. With glowing testimonials from 1000 + ecstatic families spread over 1 million sq.ft of premium living space happily under its belt, the Group continues to carry forward its never ending passion for excellence with 1.5+ million sq. ft under various stages of planning & construction.

[www.hrishabraj.com](http://www.hrishabraj.com)



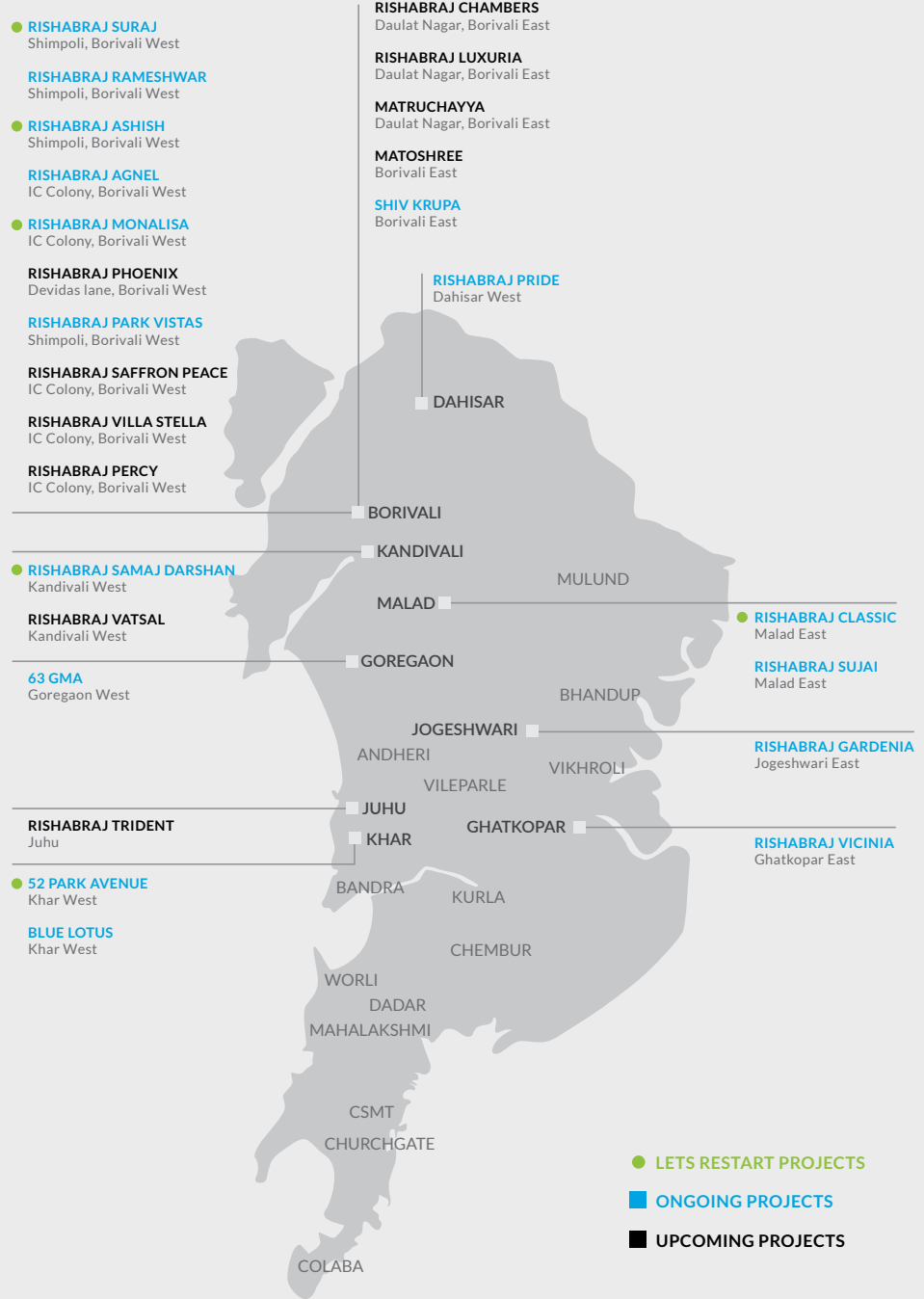
In the city of Mumbai most projects are in dire need of revamping or construction work on booked projects is stalled. This shatters the precious dream of millions who wish to live the ultimate life in this city of dreams.

Is there no respite in sight for such scenarios? Is there a possibility of a saviour emerging from the very belly of this magnificent city to help fix this huge problem? Well, the answer is a resounding Yes!

The innovative genius of H Rishabraj gave birth to a revolutionary brand in the year 2020. We are Let's Restart and Welcome to the ultimate solution provider for delayed construction projects.

[www.letrestart.com](http://www.letrestart.com)

# Our Presence



## H. RISHABRAJ

BUILDERS & DEVELOPERS

ENERGIZING HAPPINESS!

Development Manager : RISHABRAJ ESTATE DEVELOPERS PVT. LTD.

Corporate Address : 103, Jai Tirth, Daulat Nagar, Road No 10,  
Borivali (East), Mumbai - 400066 Ph : 022 2893 4545 | 2893 4747  
E : sales@hrishabraj.com W : www.hrishabraj.com

A Proud Member of  **BRIHANMUMBAI DEVELOPERS ASSOCIATION**



MahaRera number : P51800032136 (<https://maharera.mahaonline.gov.in>)

Disclaimer : The plans, specifications, images and other details herein are only indicative and the developer's reserve their rights to change any of all of these in the interest of the development. This printed material does not constitute an offer and or contract any type between the developer and the recipient. Any purchase of this development shall be governed by the terms and conditions of the agreement for sale/ lease entered into between parties and no detail mentioned in this printed material shall in any way govern such transaction.