



CODENAME 
SUNSHINE

KANDIVALI (W)



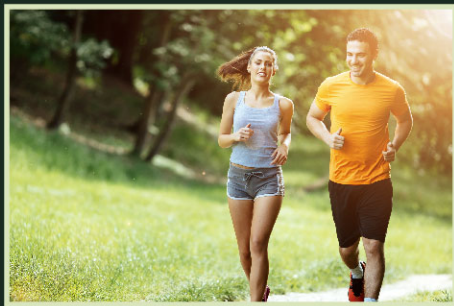


A STEP TOWARDS NEW BEGINNINGS

Take your step towards a brighter future with Sunshine, it's a multi-purpose development in Kandivali West, the city's most affluent neighbourhood. It spans up to 20 acres and offers a plethora of opportunities for holistic growth and well-being. In a city like Mumbai, where space is limited, Sunshine offers ultra-spacious living with its 1 and 2 BHK flexible homes that provide ample personal space and luxury.

Sunshine is strategically constructed in a location where its residents have easy access to necessary utilities. Surrounded by four schools and two colleges within walking distance, as well as numerous retail and entertainment centres, restaurants, hotels, health care, and emergency services such as a fire station and police station, all within a few minutes drive.

It not only houses commercial and retail centres, but it also promises a holistic growth culture. The tree-lined avenues only add to the pristine Sunshine's appeal and livability. Get your keys to open doors to a new dawn in your life.





AWAKEN TO **LUXURY**

A place where we can relax, unwind and just be ourselves. For many of us, our home is our sanctuary – a place where we can escape the hustle and bustle of everyday life keeping that in mind Sunshine brings you luxurious amenities. We have gone to great lengths to ensure that our residents have access to the best amenities possible.

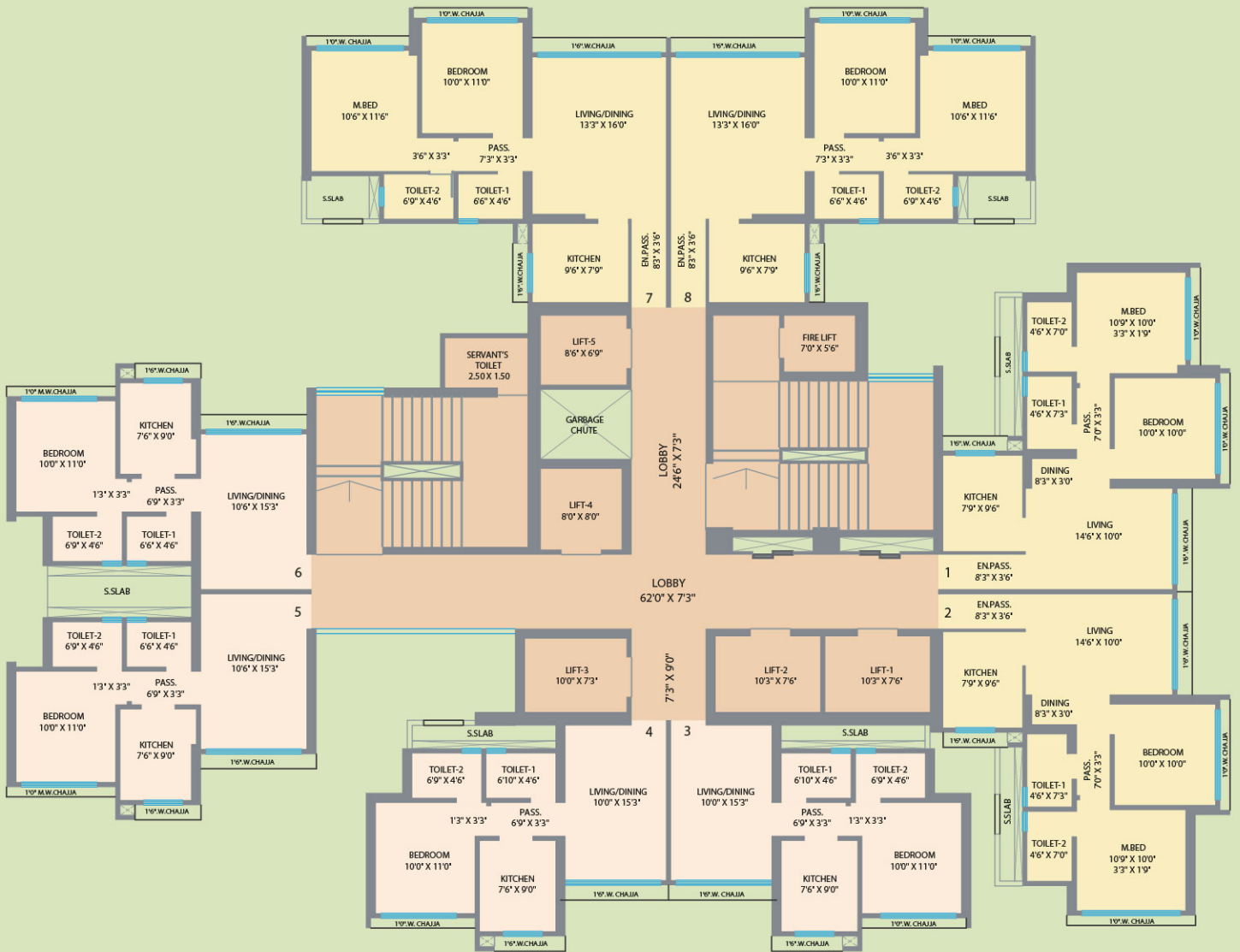
Rooftop Podium deck | Landscaped Garden | Party Lawn | Jogging Track
Kid's Play Area | Sports Pitch | Sitting Area | Yoga and Meditation | Indoor Games Room
Gym | Library | Sauna & Spa | Mini Theatre | Virtual Game Zone | Cafeteria

MASTER LAYOUT



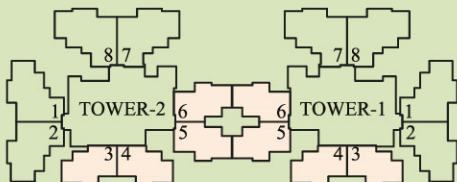
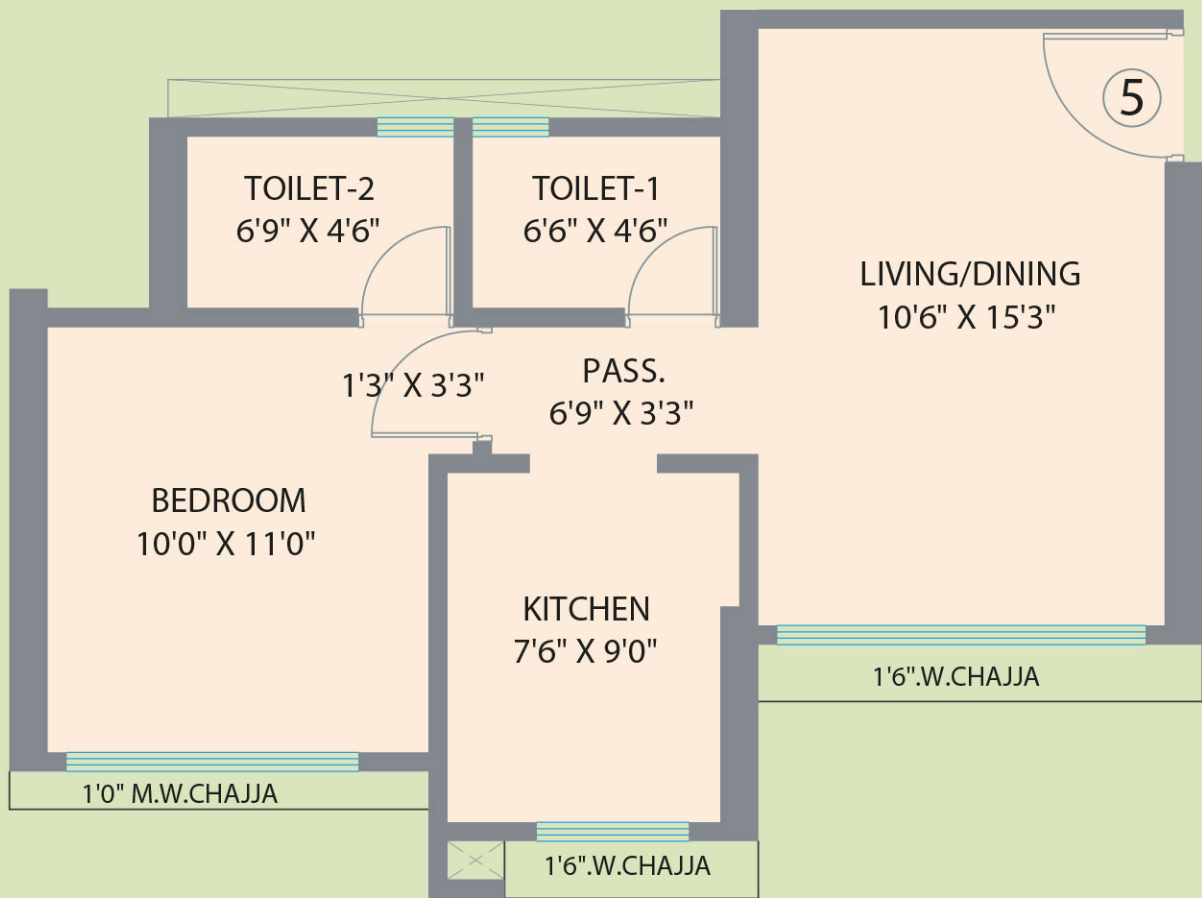
TYPICAL FLOOR PLAN

1st to 34th floor



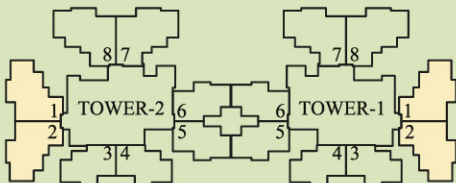
1 BHK UNIT PLAN

CARPET AREA = 448.00 SQ.FT.



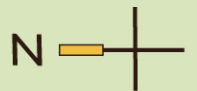
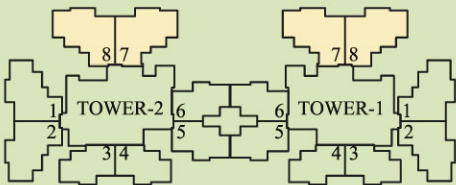
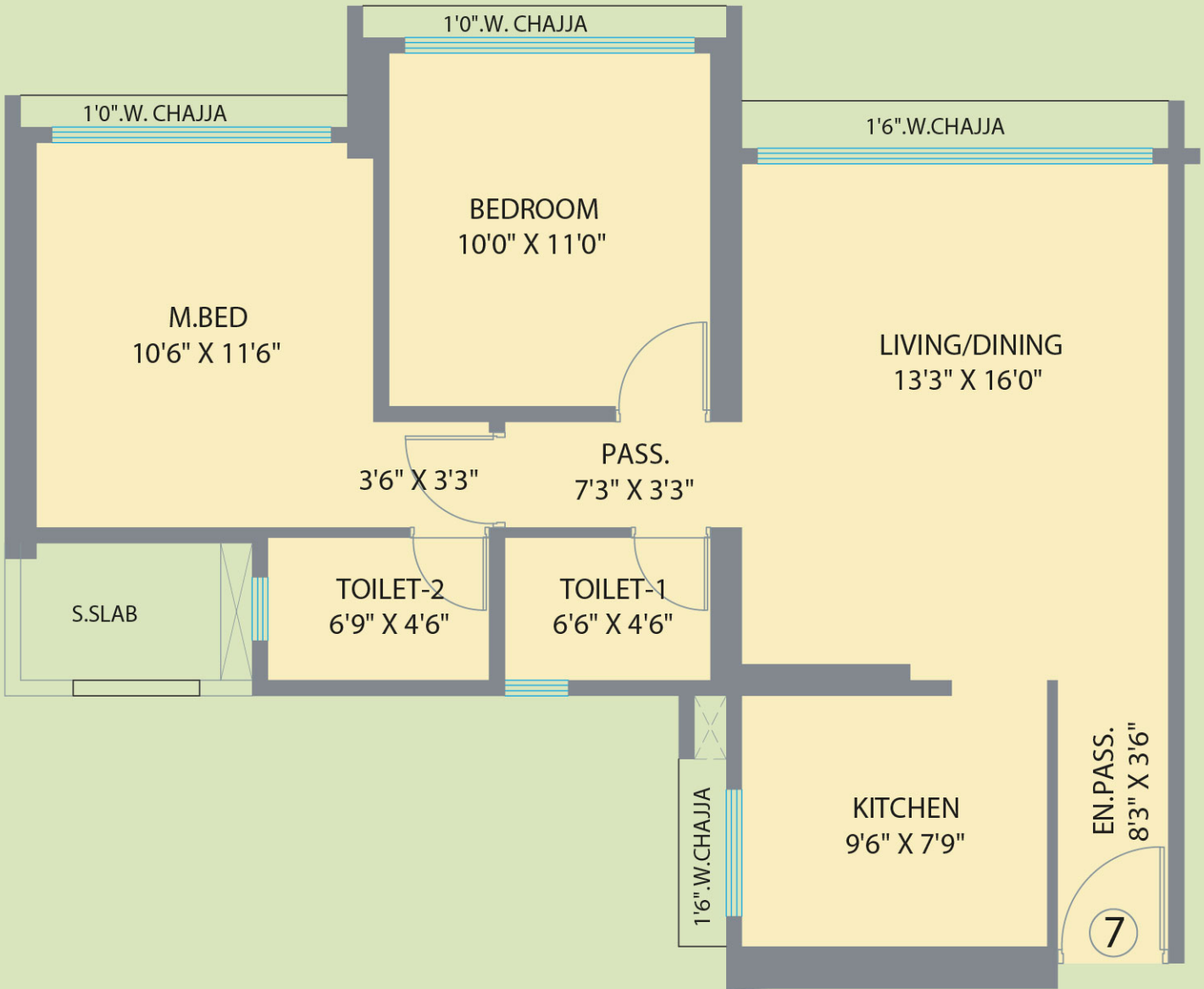
2BHK UNIT PLAN

CARPET AREA = 610.00 SQ.FT.



2BHK UNIT PLAN

CARPET AREA = 685.00 SQ.FT.



THE WORLD IS ALL AROUND YOU



Disclaimer: The plans are subject to changes/modifications/amendments (without notice) for better layout, as per the suggestions of the architect/as per requirement of the MBMC/all other concerned authorities. The dimensions may vary but the carpet area will remain the same. All the amenities, facilities etc., are subject to the approval of the concerned authorities and subject to the changes, if required. All renderings and maps are artist's impressions and not actual depiction of the building or landscaping. Developer does not warrant or assume any legal liability or responsibility for the accuracy or completeness of any information disclosed.