



★ A NEVER-SEEN-BEFORE
MASTERPIECE
IS IN THE MAKING!

— A TRANSCON PRODUCTION —

★ TRIUMPH 4 ★

— LUXURY RETURNS —

ANDHERI WEST'S
MOST AWAITED SEQUEL IS
ARRIVING SOON!

Starring Ultra-Luxurious
2 & 3 Bed Residences

Do not miss the first day, first show!

From the makers of Triumph,
Tinseltown and All-Stars
**COMES ANOTHER
BLOCKBUSTER.**



— A TRANSCON PRODUCTION —

TRIUMPH 4


— LUXURY RETURNS —

WELCOME TO THE
BIGGEST BLOCKBUSTER
EXPERIENCE.

• STOREY •
37
FLOORS

• DIRECTION •
LINK ROAD,
ANDHERI WEST

• CAST •
2BHK & 3BHK
HOMES

An aerial, wide-angle photograph of a city skyline under a clear blue sky with scattered white clouds. The city is densely packed with buildings of various heights and colors, extending to the horizon. In the distance, a body of water is visible. The text 'AN ADDRESS THAT EPITOMISES GLAMOUR' is overlaid in white, serif font on the right side of the image. A small white star is positioned above the first word, and a horizontal line with a star at its end is positioned below the last word.

★ AN ADDRESS
THAT EPITOMISES
GLAMOUR





CONNECTIVITY

- 📍 Andheri Station: 3.6 km
- 📍 D N Nagar Metro Station: 2.3 km
- 📍 Western Express Highway: 3.3 km
- 📍 Veera Desai Road: 1.2 km
- 📍 Lokhandwala Complex: 1.7 km
- 📍 JVLR: 9.9 km
- 📍 Bandra Kurla Complex: 13 km
- 📍 International Airport: 7.6 km
- 📍 Domestic Airport: 7.8 km
- 📍 Upcoming Metro Line: 1.0 km

EDUCATION INSTITUTIONS

- 📍 Oriental College: 850 m
- 📍 JBCN International School: 1.3 km
- 📍 Valia College Bhavnagar: 2.1 km
- 📍 Billabong International School: 2.4 km
- 📍 Rajhans Vidyalaya: 3.1 km
- 📍 St. John's Universal School: 3.8 km
- 📍 Bhavan's College: 3.1 km
- 📍 Mithibai College: 3.9 km
- 📍 NMIMS College: 5 km

HEALTHCARE

- 📍 Bellevue Hospital: 1.8 km
- 📍 Kokilaben Hospital: 2 km
- 📍 Reliance Energy Ltd Hospital: 3.6 km
- 📍 BSES MG Hospital: 3.8 km

LEISURE & SOCIAL LIFE

- 📍 Lord Of The Drinks: 350 m
- 📍 Irish House: 1.5 km
- 📍 The Little Door: 270 m
- 📍 Bombay Cocktail Bar: 190 m
- 📍 Tap Resto Bar: 950 m
- 📍 Pop Tates: 650 m
- 📍 Glocal Junction: 600 m

MALLS, ENTERTAINMENT & SUPERMARKETS

- 📍 Infinity Mall: 800 m
- 📍 PVR Theatre: 600 m
- 📍 Citi Mall: 600 m
- 📍 The Club: 3.1 km
- 📍 Cinépolis: 1.5 km
- 📍 Nature's Basket: 1.3 km
- 📍 4 Bungalows Market: 2 km
- 📍 D Mart: 4.2 km
- 📍 Star Bazar: 1.3 km



· STARRING ·

THE GRAND LOBBY

As a place of palatial magnificence



· INTRODUCING THE LEAD STAR CAST ·
ULTRA-LUXURIOUS
2 & 3 BED RESIDENCE
As a place of dazzling charm and palatial magnificence

— A TRANSCON PRODUCTION —
TRIUMPH 4
— LUXURY RETURNS —

· ALSO STARRING ·
MARBLE FLOORING IN LIVING ROOM, BEDROOMS AND KITCHEN | WOODEN FLOORING IN MASTER BEDROOM
VETRIFIED TILE FLOORING AND DADO IN TOILETS | MODULAR SWITCHES | TV POINT AND TELEPHONE POINTS |
PROVISION FOR AC IN LIVING ROOM AND BEDROOMS | GRANITE KITCHEN PLATFORM | STAINLESS STEEL KITCHEN
SINK | GAS LEAKAGE DETECTOR IN KITCHEN | BRANDED CP AND SANITARY FITTINGS | GYPSUM WALL FINISH
WITH PAINT | FLUSH DOOR WITH LAMINATE FINISH | POWDER COATED FULL HEIGHT ALUMINIUM WINDOWS



★ LIVE IT UP
CELEBRITY STYLE ★

Designed by
Padma Bhushan Awardee
Hafeez Contractor





— IN A TRANSCON PRODUCTION —

TRIUMPH 4

— LUXURY RETURNS —

• ALSO STARRING •

SKY GARDEN | SWIMMING POOL WITH JACUZZI | DOUBLE HEIGHT INDOOR MULTIPURPOSE COURT | CRICKET PITCH | JOGGING TRACK | POOL SIDE CAFE/BARBEQUE | SENIOR CITIZEN REST ZONE | UPPER DECK | OUTDOOR PARTY LAWN | BUSINESS CENTRE | STATE-OF-THE-ART GYM | INFINITY POOL | CAFE LOUNGE | MULTIFUNCTION HALL | KIDS PLAY AREA



Image for Reference Purpose

· STARRING ·
THE UPPER DECK
As a place of breathtaking views

— IN A TRANSCON PRODUCTION —
TRIUMPH 4
— LUXURY RETURNS —



★ LOCATION SUPREMACY
AND THE ART OF DIRECTION ★

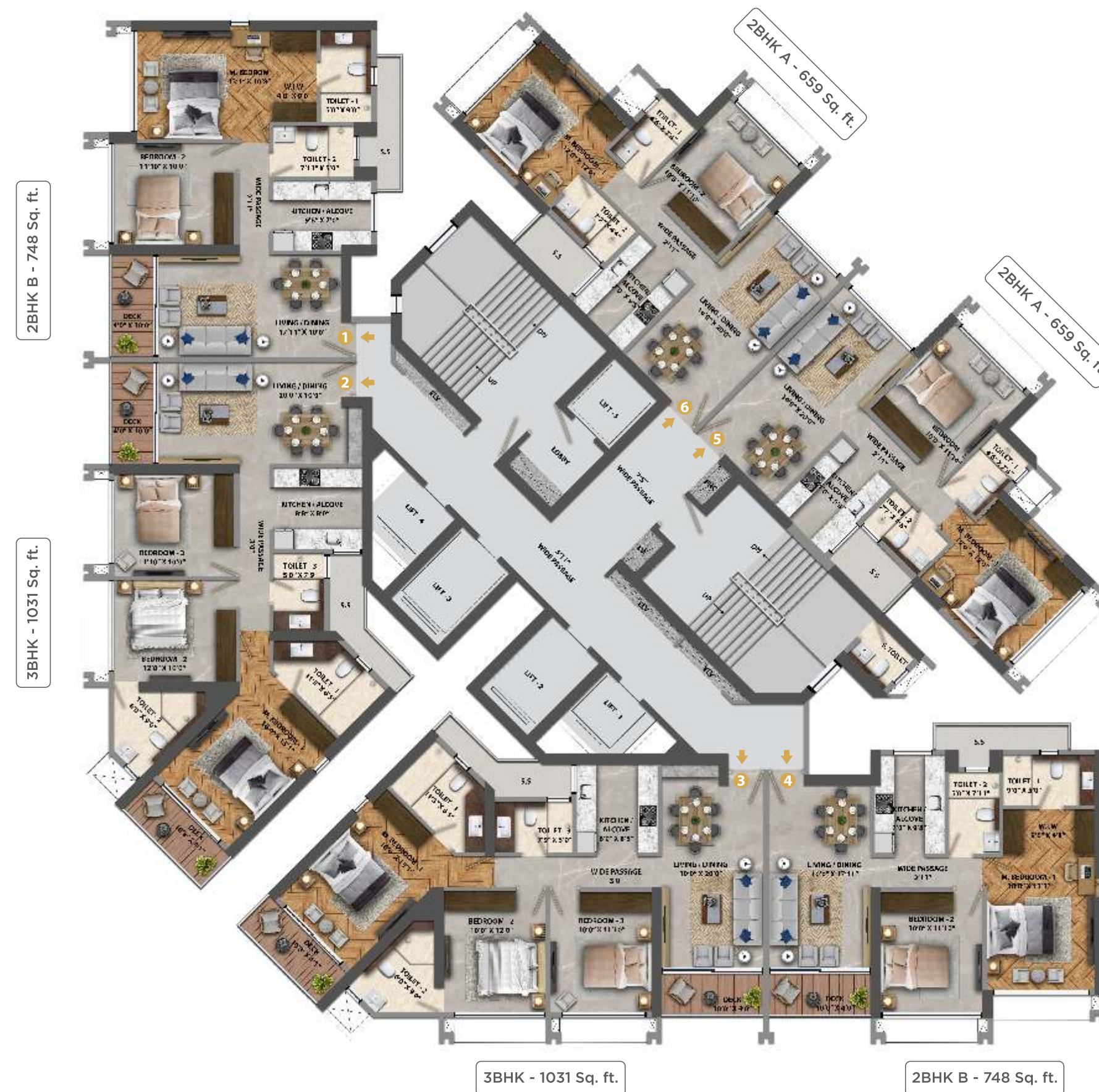
— IN A TRANSCON PRODUCTION —


★ TRIUMPH 4 ★

— LUXURY RETURNS —

PLANS

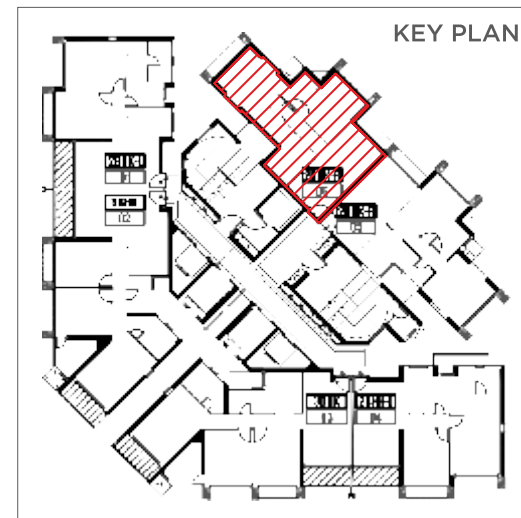
TYPICAL FLOOR PLAN



 The Triumph 4 is name for the building registered under MahaRERA: RERA NO. P51800034924 is available on the website <https://maharera.mahaonline.gov.in> under registered projects.
 Project Financed By : Asia Real Estate II India Opportunity Trust and PHL Fininvest Private Limited.

Disclaimer : The plans, specification, elevation, conceptual designs, visuals, images, configurations, dimensions, photograph, furniture, fixtures, amenities, facilities, etc. are indicative, tentative and strictly provided for representation purpose only and are subject to requisite approvals from the competent authorities or otherwise and the Promoter reserves their right to make changes, addition, modification and alterations at its sole discretion. This does not constitute an offer and/or contract of any nature whatsoever between the Promoter and the intended recipient /reader/viewer /interested party who should independently verify and satisfy himself/herself /themselves /itself before any conclusive decision. All brand names and trademarks are reserved. Stamp duty and registration charges shall be applicable as per applicable laws. Government taxes, charges & other society charges will be charged extra.

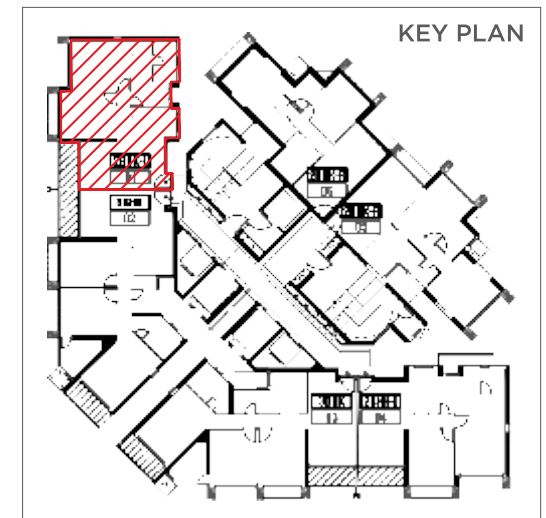
2BHK A - 659 Sq. ft.



The Triumph 4 is name for the building registered under MahaRERA: RERA NO. P51800034924 is available on the website <https://maharera.mahaonline.gov.in> under registered projects.
Project Financed By : Asia Real Estate II India Opportunity Trust and PHL Fininvest Private Limited.

Disclaimer : The plans, specification, elevation, conceptual designs, visuals, images, configurations, dimensions, photograph, furniture, fixtures, amenities, facilities, etc. are indicative, tentative and strictly provided for representation purpose only and are subject to requisite approvals from the competent authorities or otherwise and the Promoter reserves their right to make changes, addition, modification and alterations at its sole discretion. This does not constitute an offer and/or contract of any nature whatsoever between the Promoter and the intended recipient /reader/viewer /interested party who should independently verify and satisfy himself/herself /themselves /itself before any conclusive decision. All brand names and trademarks are reserved. Stamp duty and registration charges shall be applicable as per applicable laws. Government taxes, charges & other society charges will be charged extra.

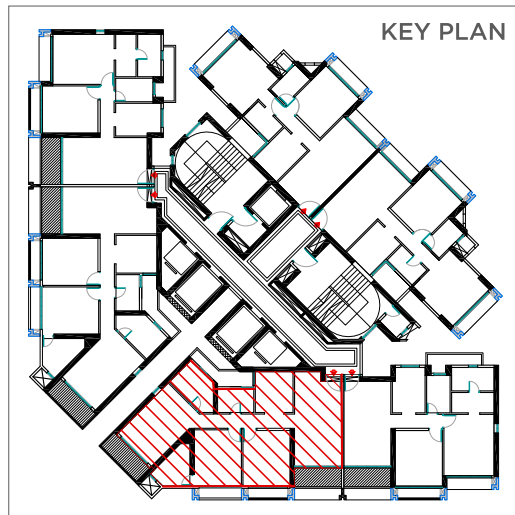
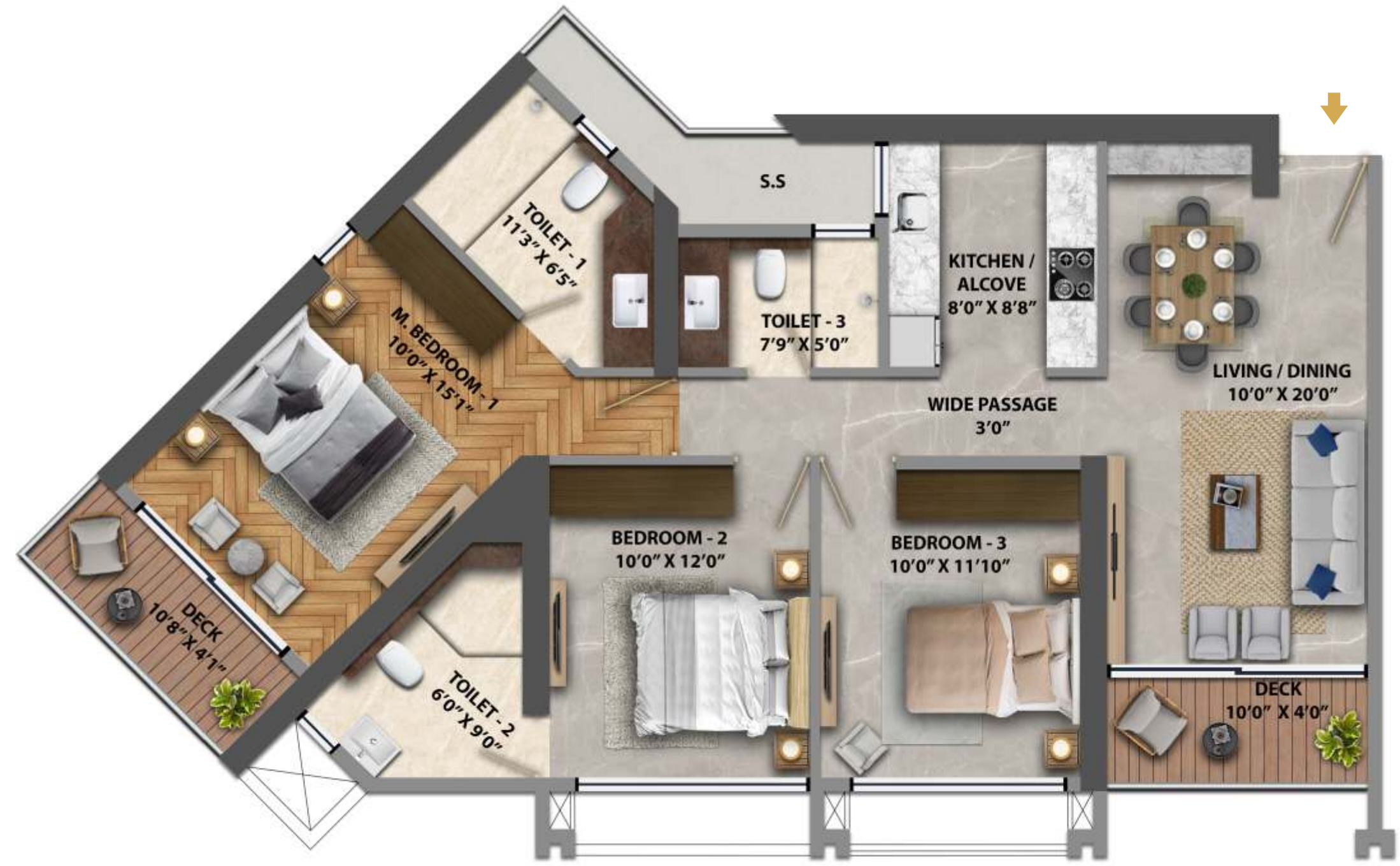
2BHK B - 748 Sq. ft.



The Triumph 4 is name for the building registered under MahaRERA: RERA NO. P51800034924 is available on the website <https://maharera.mahaonline.gov.in> under registered projects.
Project Financed By : Asia Real Estate II India Opportunity Trust and PHL Fininvest Private Limited.

Disclaimer : The plans, specification, elevation, conceptual designs, visuals, images, configurations, dimensions, photograph, furniture, fixtures, amenities, facilities, etc. are indicative, tentative and strictly provided for representation purpose only and are subject to requisite approvals from the competent authorities or otherwise and the Promoter reserves their right to make changes, addition, modification and alterations at its sole discretion. This does not constitute an offer and/or contract of any nature whatsoever between the Promoter and the intended recipient /reader/viewer /interested party who should independently verify and satisfy himself/herself /themselves /itself before any conclusive decision. All brand names and trademarks are reserved. Stamp duty and registration charges shall be applicable as per applicable laws. Government taxes, charges & other society charges will be charged extra.

3BHK - 1031 Sq. ft.



The Triumph 4 is name for the building registered under MahaRERA: RERA NO. P51800034924 is available on the website <https://maharera.mahaonline.gov.in> under registered projects.
 Project Financed By : Asia Real Estate II India Opportunity Trust and PHL Fininvest Private Limited.

Disclaimer : The plans, specification, elevation, conceptual designs, visuals, images, configurations, dimensions, photograph, furniture, fixtures, amenities, facilities, etc. are indicative, tentative and strictly provided for representation purpose only and are subject to requisite approvals from the competent authorities or otherwise and the Promoter reserves their right to make changes, addition, modification and alterations at its sole discretion. This does not constitute an offer and/or contract of any nature whatsoever between the Promoter and the intended recipient /reader/viewer /interested party who should independently verify and satisfy himself/herself /themselves /itself before any conclusive decision. All brand names and trademarks are reserved. Stamp duty and registration charges shall be applicable as per applicable laws. Government taxes, charges & other society charges will be charged extra.