



PASSCODE

PRIDE OF MALAD

MALAD EAST



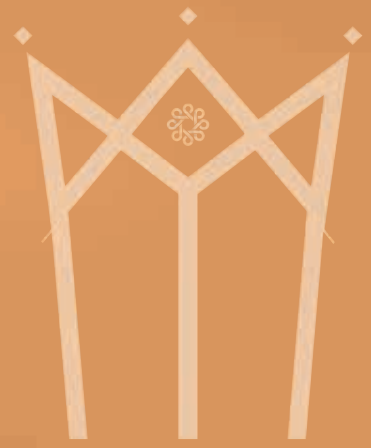
**MUMBAI,
THE FINANCIAL
CAPITAL AND
EVER-EVOLVING
ECHOING CITY,**

is on a constant hunt for spaces that can not only accommodate but also build efficiencies for its everyday journey of aspiration, dream and individual growth. Over the years, the city has witnessed more start-ups, and the youth are investing heavily in real estate. With over three decades of experience, RCC is known for crafting international high-rise tower landmarks that redefine Mumbai's skyline and endure to bring real value and expertise to the real estate industry. It is good news for everyone looking to invest in real estate that RCC is committed to creating international landmarks and continues to retain integrity with our customers with good corporate governance and fair and transparent business practices.

As of now, we have completed over 28 projects & are anticipating our 6 classic upcoming projects. With increasing rental returns and steady appreciation of real estate, the city is, beyond doubt, a preferred investment destination.



Today, RCC is known as one of the reputed real estate companies with major projects at strategic locations. Our projects include ground-breaking residential complexes with excellent in-class amenities and world-class commercial projects which have evolved in rendering unique & practical Commercial Properties in Mumbai. The planning of Commercial Properties has evolved the interests & importance of a healthy work environment to our customers with various work zones to maintain systematic work in an organized manner. We are committed to ensuring that the experience with us will be rewarding and that associating with us will deliver great joy along with a perfect home.





A GLIMPSE OF DESIRABLE COMFORTS



Actual Image

Pride of Malad opens up numerous prospects for an exhilarated lifestyle spread over 40,000 sq. ft. A good news for all age groups. Whether a dip in the pristine swimming pool, a game of golf at the mini golf course, or a leisurely evening stroll in the skywalk garden, you will always find a pleasing way to spend your free time. The layout also has a Jain Derasar within the premise.





WE PROVIDE A MAGNIFICENT LIFESTYLE.

Welcome to Pride of Malad, a life of comfort and luxury you've wished for and superlative designs you've always desired for. Now experience the lavish life at Pride of Malad, a luxury landmark in the making as Malad's tallest tower, with superiority over the rest and advantageously located in Malad, the heart of Mumbai. 'Pride of Malad' is a first-rate modern architecture project by RCC and is embellished with every necessary convenience of city life. Tastefully stylish and luxurious, experience good living in spacious 2 & 3 BHK apartments with distinctive specifications, convenient roadways, proximity of institutions and entertainment hubs and an exhaustive list of amenities. Pride of Malad is infused with extreme luxury & sophisticated infrastructure as per today's demand of the aspirational generation. It is an imposing multi-storied tower with luxurious apartments that will blend style with functional convenience. Celebrating 32 years in the real estate industry, Right Channel Construction Pvt. Ltd. is pleased to present its 28th project, Pride of Malad.

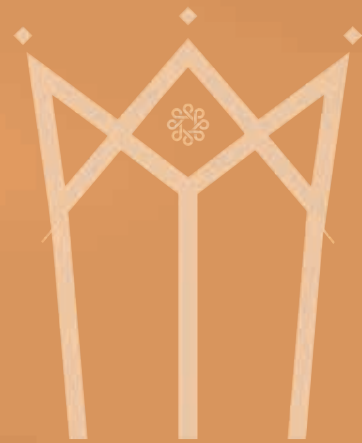


Artistic Impression

INDULGENCE IN EACH CORNER

The good news for new families is that the spacious indoors of your new home are supplemented by great balconies that usher in an abundance of fresh air and sunlight. The elegant 2 & 3 BHK residences provide every luxury and are ideal for nuclear families. The rooms at Pride of Malad are spacious and cross-ventilated, it all adds up to a living beyond the ordinary.

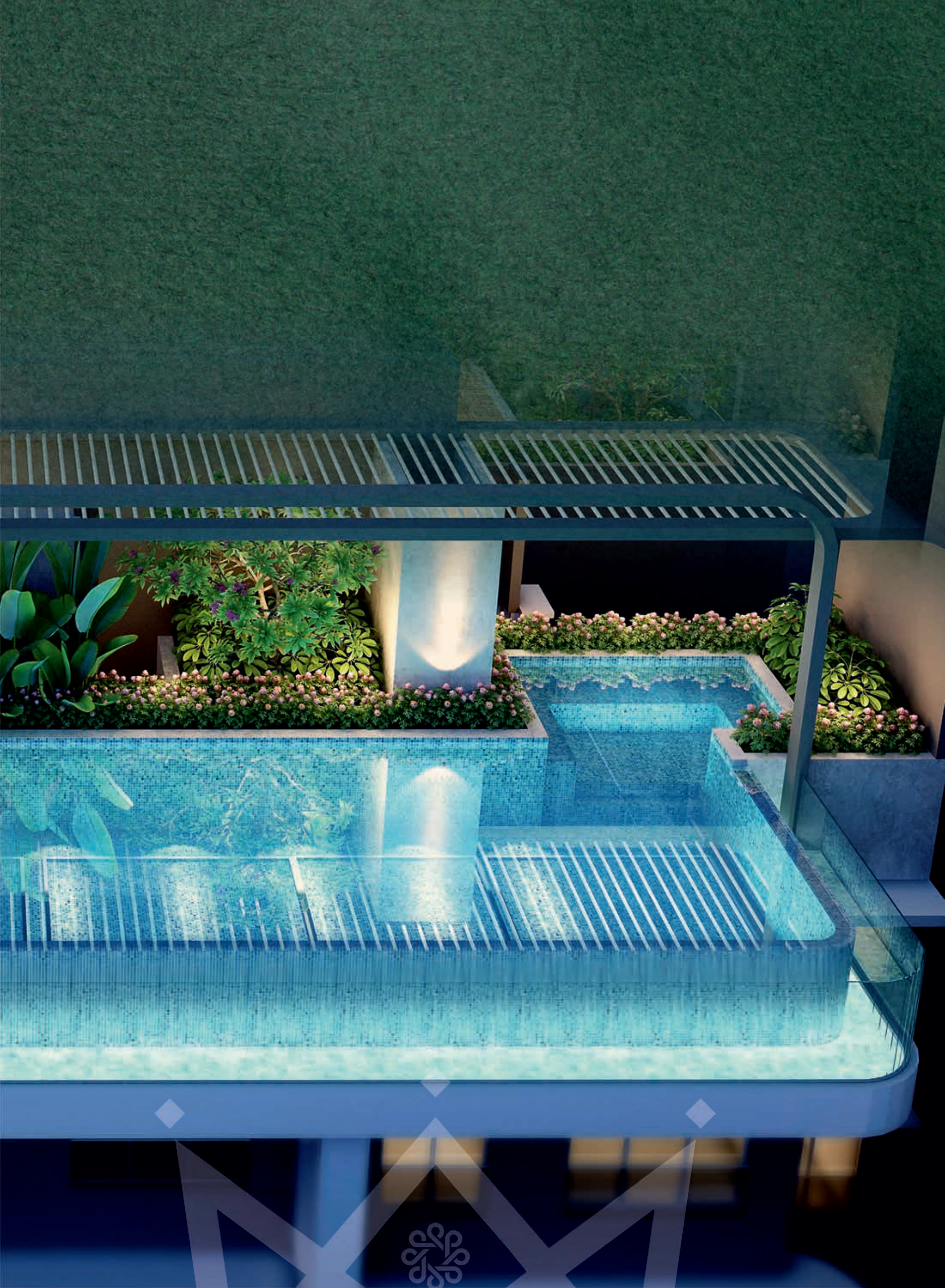






DIVE INTO THE POOL OF SPLENDOR





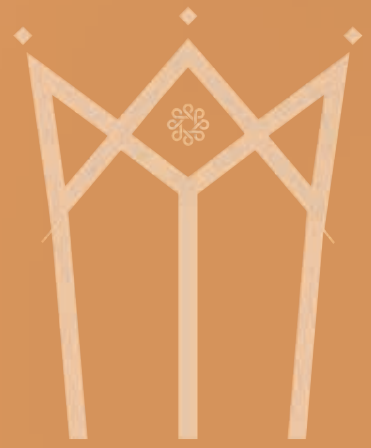
PODIUM LUXURIES

- Amphitheatre
- Multi-purpose Court: Tennis, Badminton and Basketball
- Senior Citizen Area
- Vehicle Free Podium Garden
- Mini-Golf Course
- Kids' Play Area
- Swimming Pool with Deck
- Jogging Track and Pathway
- Wi-Fi, Spa and Jacuzzi
- Yoga and Meditation Area
- Fully-equipped Gymnasium
- Herbal Tree
- Charging point for Electric vehicles



ROOFTOP LUXURIES

- Sky Garden
- Sky Cabana
- Jogging Track
- Kids' Play Area
- Senior Citizen Area
- Sky Lounge
- Stage for Social Gathering
- Sky Walkways and Acupressure Path
- Sky Gazebo
- Barbeque Terrace



Artistic Impression

EXTERNAL SPECIFICATIONS

- Double height entrance lobby
- Air conditioned concierge desk & lounge
- Advanced security with 24x7 CCTV service
- Multi Level vehicle parking space
- Wi-Fi enabled common areas
- High speed elevators
- Sewage treatment plant
- Rain water harvesting
- Bore water facility
- Texture adorned wall
- Asian Paints
- Solar System

INTERNAL SPECIFICATIONS

- Premium Flooring
- Designer ware tiles
- Branded sanitary ware
- Anodised aluminum windows
- Provision for piped gas connection
- Intercom facility
- Jaquar CP fittings
- Asian Royale paints adorned walls


SAFETY & FIRE PROTECTION

- Fully equipped with fire fighting system internally to externally of the flat to building

ENVIRONMENT AND HEALTH

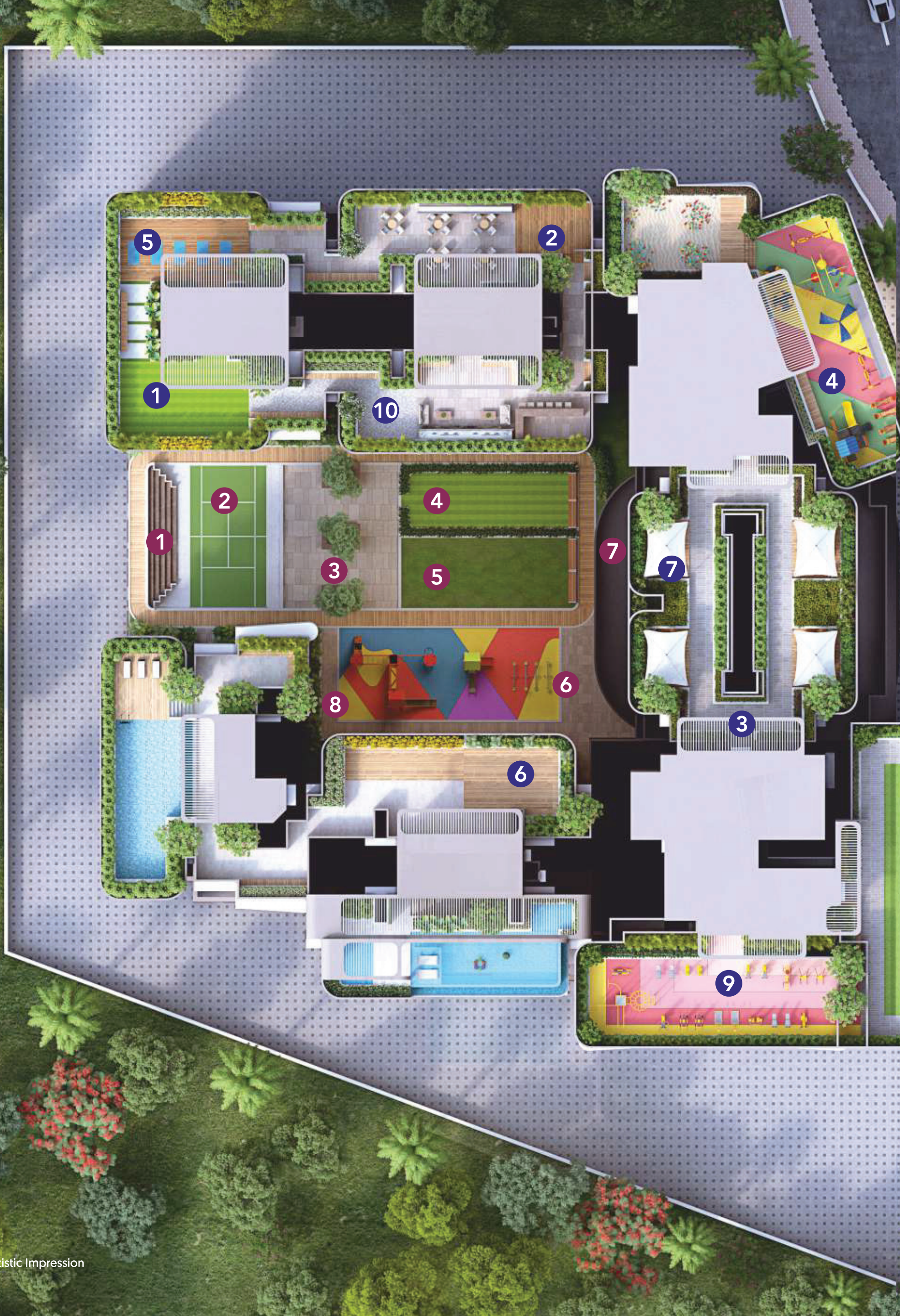
- 160 Herbal and trees plantation around the periphery of internal layout
- Herbal and trees on rooftop

CULTURAL ASPECT

- Jain Derasar within the layout.
- 



Artistic Impression



MASTER LAYOUT PLAN

PODIUM AMENITIES

- 1 Amphitheatre
- 2 Multi-purpose Court
- 3 Senior Citizen Area
- 4 Podium Garden
- 5 Mini-golf Court
- 6 Kids' Play Area
- 7 Fitness Centre Inside Building Podium Level
- 8 Botanical Garden

ROOFTOP AMENITIES

- | | |
|-----------------------|------------------------------|
| 1 Sky Garden | 6 Terrace Barbeque |
| 2 Sky Cabana | 7 Sky Gazebo |
| 3 Jogging Track | 8 Sky Walk |
| 4 Kids' Play Area | 9 Stage for Social Gathering |
| 5 Senior Citizen Area | 10 Sky Lounge |



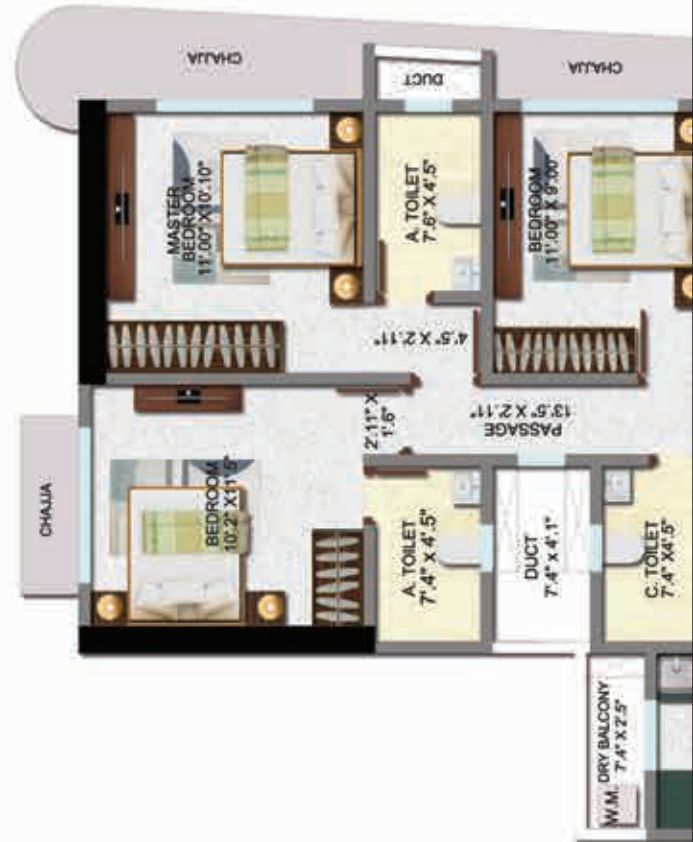


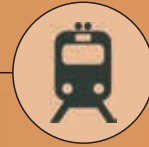
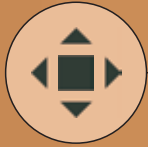


**TYPICAL FLOOR PLAN
C WING**

Flat Nos	Type	Rera Carpet
01	2 BHK	624
02	2 BHK	650
03	2 BHK	648
04	2 BHK	603
05	2 BHK	603

4 BHK Duplex - 1300 Sq.Ft.





IMPORTANT JUNCTIONS

W.E.H. : 1 Km

S.V. Road : 1 Km

Link Road : 2 Km

STATIONS

Malad Station : 1 Km

Goregaon Station : 2 Km

Pathanwadi Metro Station : 1 Km

Inorbit Metro Station : 2 Km



MALLS AND MULTIPLEX

Oberoi Mall : 1 Km

Inorbit Mall : 2 Km

Carnival Cinemas : 2 Km

COMMERCIAL HUBS

Raheja Infinity Park : 4 Km

Nirlon Knowledge Park : 3.6 Km

Mindspace : 4.4 Km



PLACE OF WORSHIP

Jain Mandir : 0.5 Km

Hanuman Mandir : 0.5 Km

Shani Mandir : 0.4 Km

HOTELS AND CLUBS

The Westin : 2.5 Km

Radisson : 1.2 Km

Goregaon Sports Club : 3.8 Km



EDUCATIONAL INSTITUTES

Witty International : 0.7 Km

Children's Academy : 1.3 Km

Vibgyor High School : 2 Km

Dalmia College : 2.7 Km

Mittal College : 3.9 Km

Durgadevi Saraf College : 0.7 Km



YOUR WORLD
AROUND-

THE MOST
PROMINENT
LOCATION



LOCATION MAP

