



CODENAME

BIG BONANZA

Big Deals For Big Dreams

A home to call yours in the city of dreams, is a dream for a lot of people. Situated in the heart of Mumbai's Goregaon West, this landmark location is optimum for those seeking a space of their own. The property offers a great deal of amenities that assists you to rediscover yourself.



Sushanku Reality

The Ashok Gupta Group was established in 1979. They are serial entrepreneurs with experience in real estate, education and fitness. The company expanded into the Real Estate Sector in 1990.

Sushanku Realty is guided by the vision of creating affordable and comfortable spaces at prime locations. All essential features required to live life comfortably are inherent in their designs. These designs intend to provide a happy life to the modern individuals of Mumbai. It is their individuality that allows them to bring together a holistic community within the city.

Their latest venture- Codename Big Bonanza will take your aspirations and goals closer to fulfilment.



Sri Balaji Enclave
(Malad West)



Madeena Market & Tower
(Wadala)

The Sushanku Legacy

Sushanku Realty has build well recognised projects in Worli, Wadala, Santacruz and Malad. Their interests go beyond real estate into education, fitness, and technological applications. They are popularly known as the promoters of Shri Balaji International School, an institution that continues to make tremendous headway in the field of education. Their next venture- HanMan Fitness Centre, is an establishment which serves satisfied consumers across Mumbai. Sushanku believes in providing high quality service, good relation with customers, and a high level of professionalism.



A lifetime of possibilities are waiting for you!

Moving to a new space is an opportunity for a lifestyle upgrade.

With us, a better future awaits you and your loved ones.

Experience true urban living in the
Heart of Goregaon





Where modern needs meet perfect solutions

The modern individual of Mumbai needs a space of their own, a home that enables them to grow holistically without restraints. Experience a “bigger than life” approach to amenities and comfort living at this landmark location.

A home which always facilitates your career

A close proximity to IT Parks and Commercial Centres allows for optimum utilization of time off work. Experience a work-life balance unparalleled at this landmark location!

Easy accessibility to the biggest commercial hub of Goregaon West





Stay connected to the world of comfort & convenience

This landmark is situated in one of the premium neighbourhood of Goregaon. Belong to a well-connected address of life, which is surrounded by a plethora of comfort and conveniences. Discover a pleasing medley of new possibilities arising every day.

- 
 Connecting S.V. Road And Link Road
- 
 Goregaon Railway Station In Close Proximity
- 
 Nearby Malls, Restaurants And Cinema Halls
- 
 Metro Station On Metro Line 2
- 
 Connecting Western Express Highway
- 
 Nearby Industrial Park / Mnc's

The city is yours when travelling is so easy!

Locations are made unmissable by the possibility of accessible connectivity.

At this landmark location, all you need to do is step out!



Making travel smooth and easy

This landmark location is a much sought-after address for its superior connectivity to the Pahadi Goregaon metro station and Goregaon railway station. Experience instant connectivity.





Be at an advantage, always!

Be a part of a futuristic development with an ambitious project, the coastal road that assists the Eastern Freeway, Western Express Highway and the local railway line. Expect seamless connectivity between the South Mumbai and Goregaon.



Explore an advanced way to life!

Enhance life and belong to a premium address. A landmark location of Western Mumbai, known to be calm with exquisite neighbourhoods, Passcode Big Bonanza gives you a chance to truly live up to a home that has everything you wish for, with connectivity to major metro lines, railway stations and the highway. Nearby malls, restaurants and cinema halls also provide great entertainment.



Gymnasium



Kids' Play Area



Yoga Zone



Terrace Garden & Sit Outs

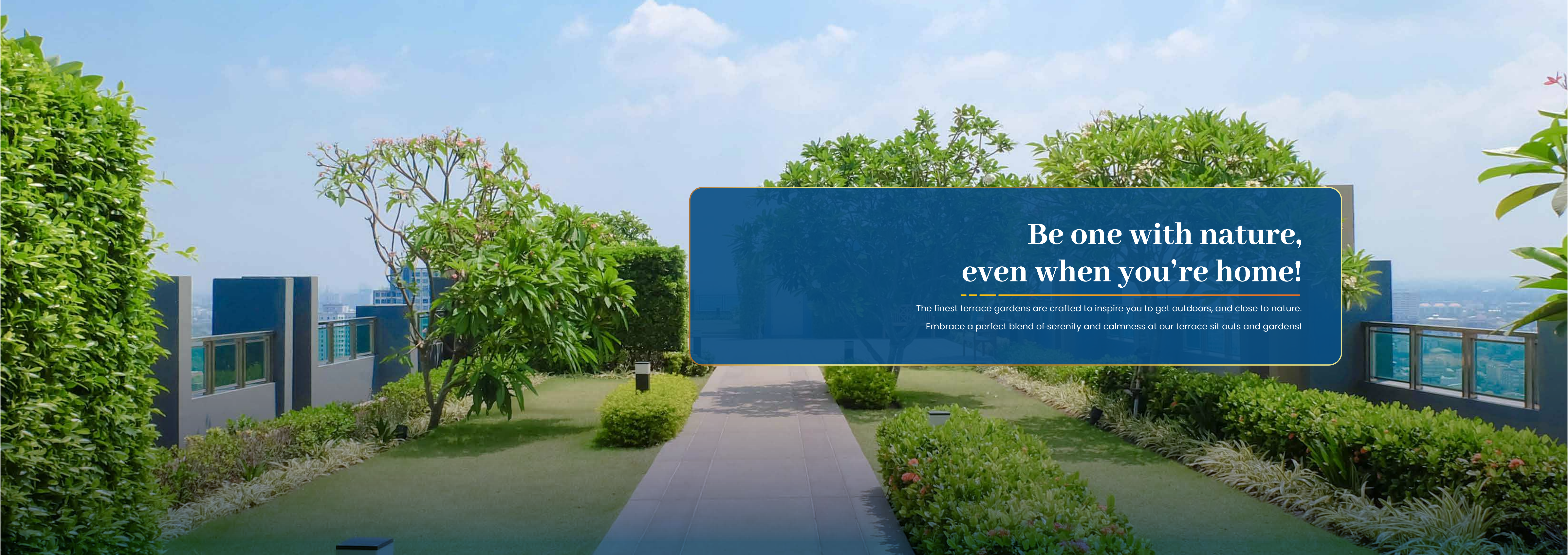


Electric Vehicle Charging Station

A modern, bright living and dining area. In the foreground, a brown modular sofa is partially visible. A round, white marble coffee table with a gold rim sits on a patterned rug. A blue armchair with a yellow cushion is the focal point. In the background, a dining table with blue and yellow chairs is set up. The kitchen area is visible with white cabinets and a coffee machine. Large windows with sheer curtains let in natural light. A large abstract graphic of overlapping triangles in yellow and grey is on the wall behind the sofa.

Optimised spaces for ultimate living, with clever Zero Space Wastage

Every corner counts in the city of dreams- smart utilization of space makes for a smart life!



Be one with nature, even when you're home!

The finest terrace gardens are crafted to inspire you to get outdoors, and close to nature.

Embrace a perfect blend of serenity and calmness at our terrace sit outs and gardens!



Choose health and fitness, with gym facilities

Prioritizing your health has never been so easy with state-of-art equipment and facilities available to unlock your healthiest self!

A comfortable space to calm your mind !

An ultimate Yoga Center to relax your mind, body and soul.

Unwind in serenity exclusively crafted for you to revive.





**Spacious car parks where parallel
parking isn't a nightmare!**

Infrastructure that connects people to the future!

Now, you can leave your home every morning with a fully charged vehicle- it goes a long way towards a sustainable future. Charge your electric vehicles at our charging stations to speed off towards a brighter tomorrow!





An opportunity to connect with nature is all it takes to refresh life!

Our strategically placed sit outs are perfect for mingling and socializing with loved ones. Take a clean breath of air, with the ones who matter the most!

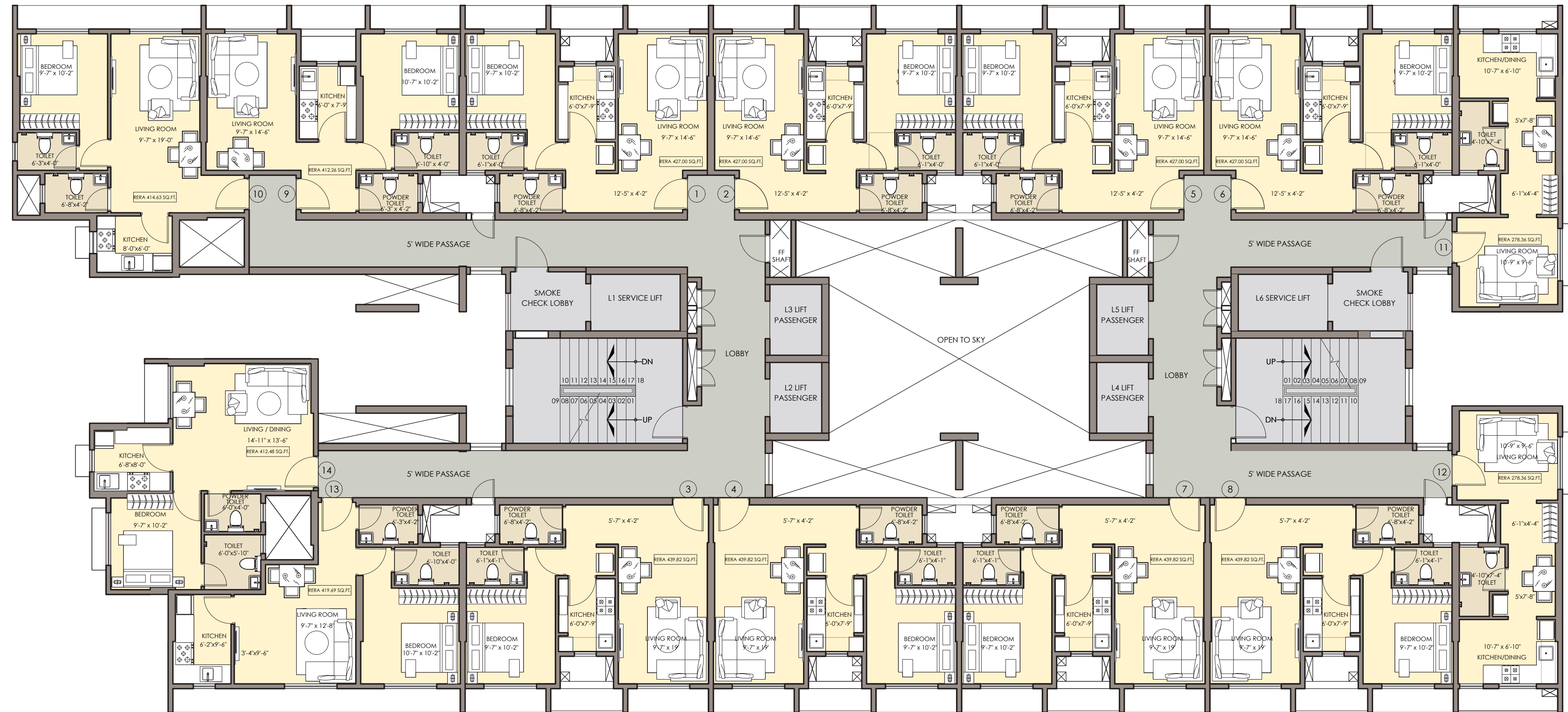
Interactive Kids' Play Area

A space that truly makes you children enjoy being active, everyday!





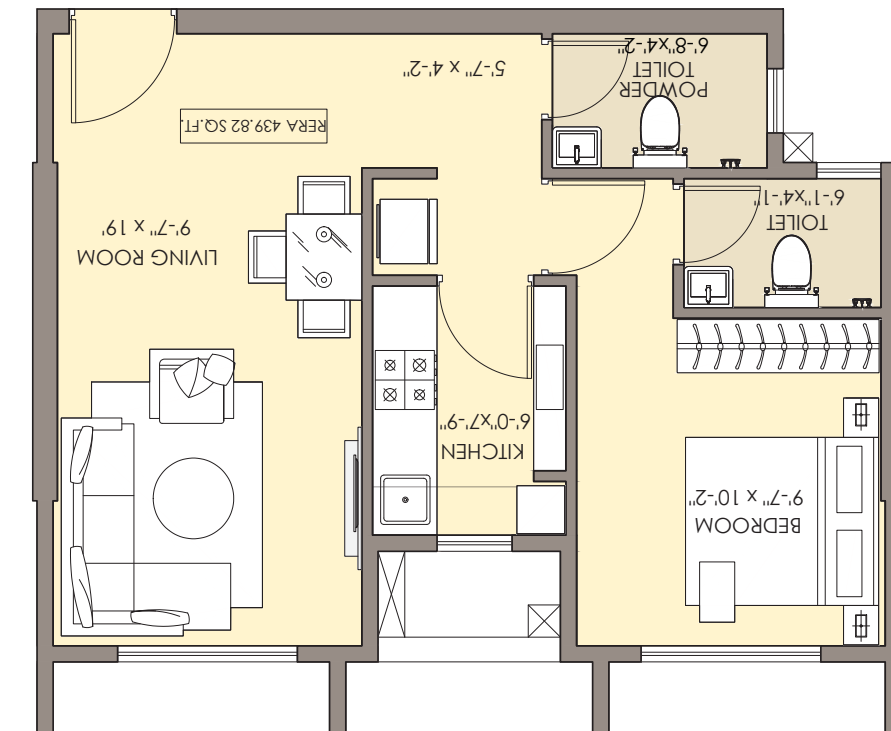
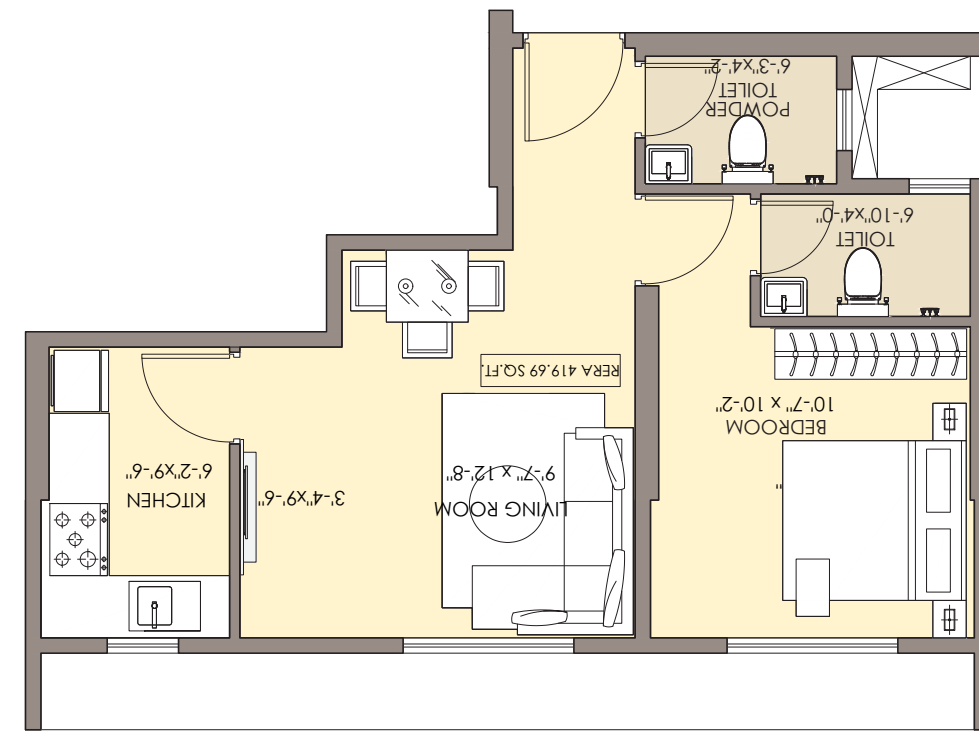
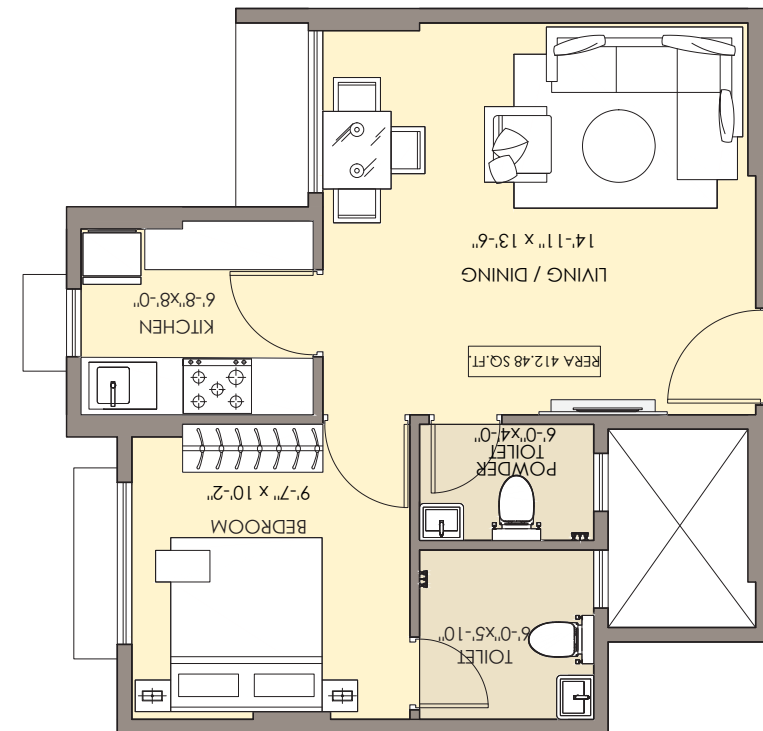
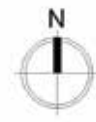
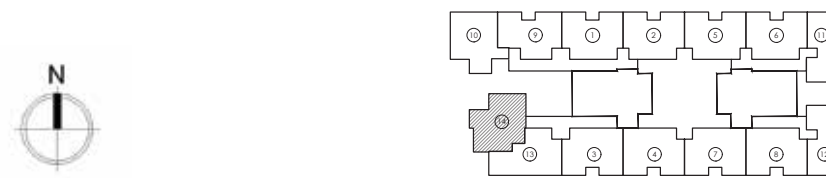
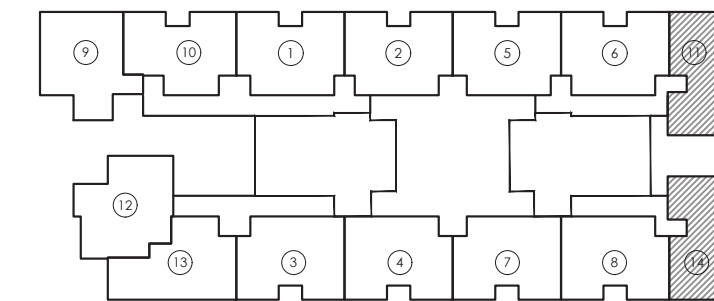
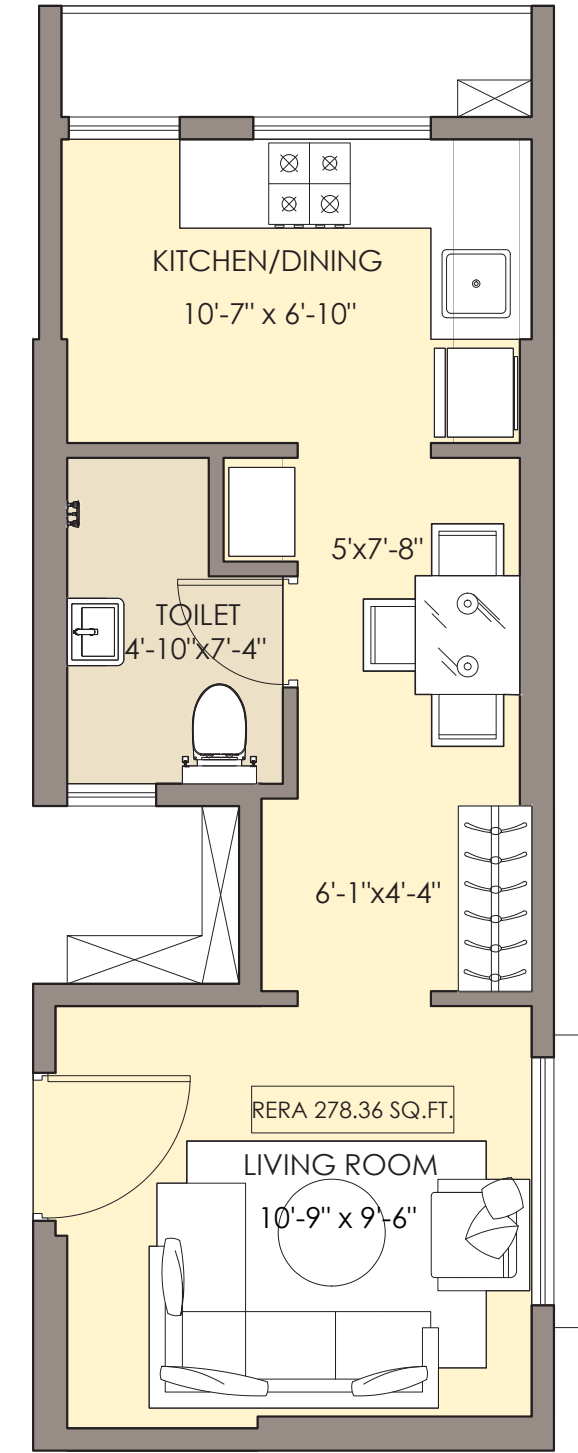
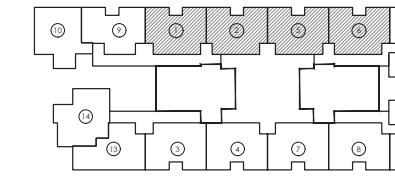
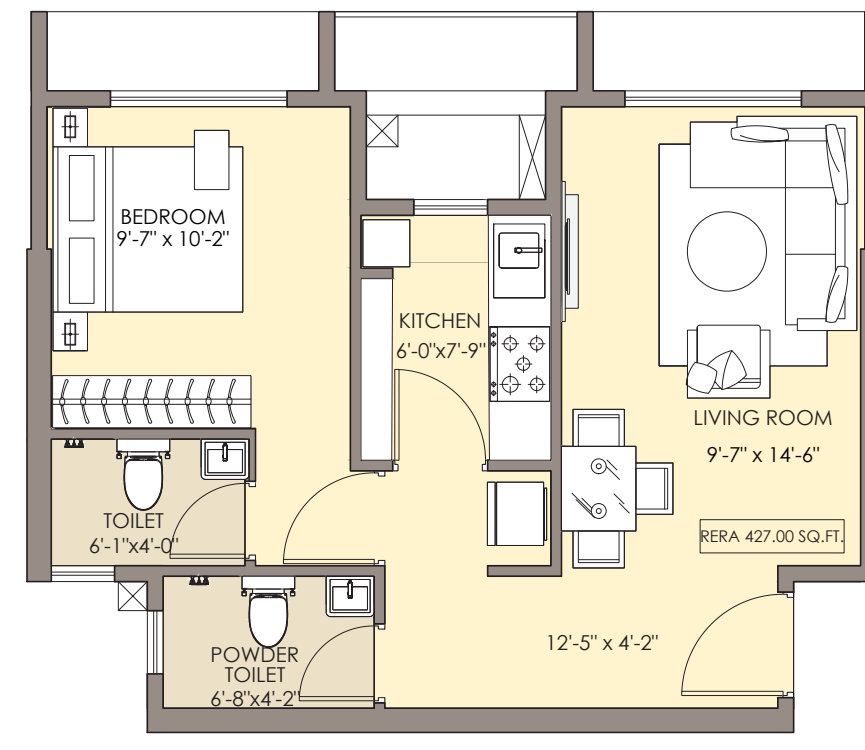
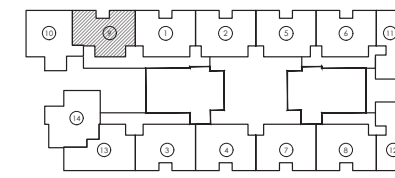
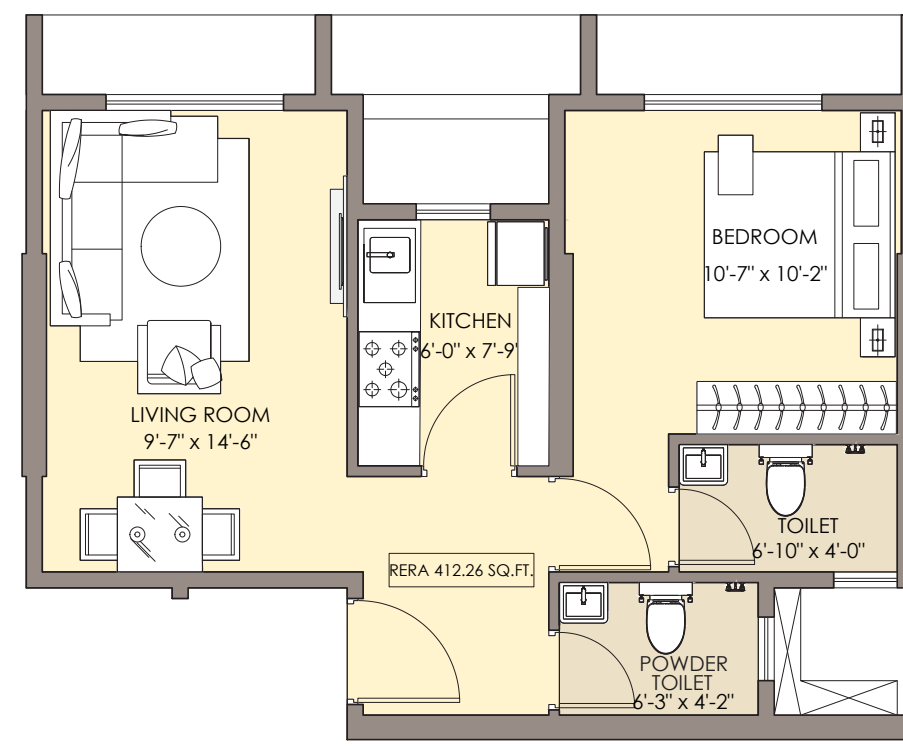
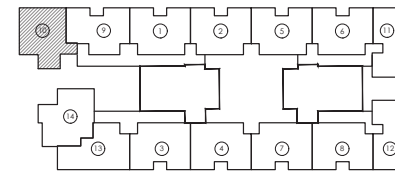
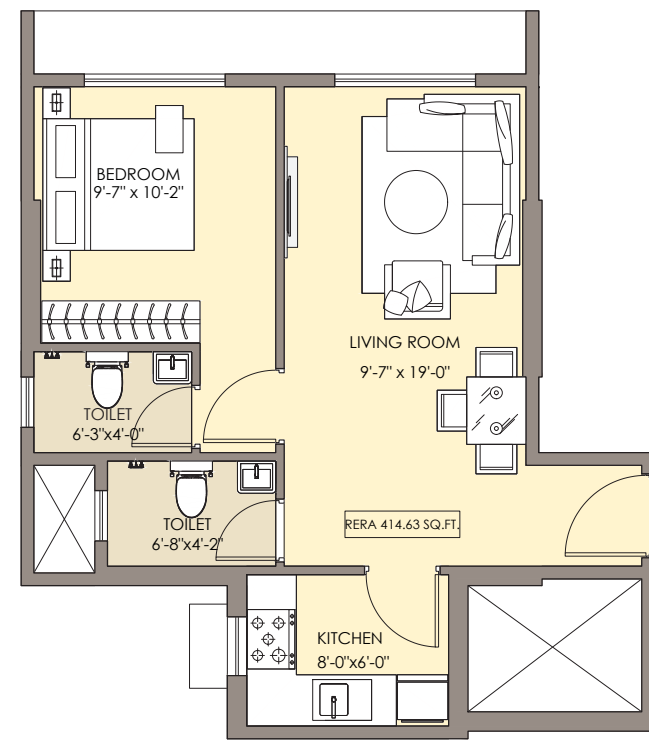
Typical Floor Plan





Internal specifications within the apartment

- Vitrified tiles for flooring
- FRD doors (Fire Resistant) Main Door
- All other doors - Laminated
- Granite platform in Kitchen
- Dado tiles in Kitchen
- Washrooms with Anti Skid tiles
- CP fittings in Washrooms
- Switches
- Anodized or PU coated windows
- Provision for piped gas
- Provision for exhaust fan in Kitchen



Partners

Liaising Architects

Suyog Seth

Mitie Design

Design Architects

G K Vanwari

RCC Consultant

R D Deshpande

Landscaping Consultant

Ratiwala



Thank You!