

adani  
Realty

PRESENTS

TEN BKC





## BKC Mumbai's only global address.

BKC with the highest concentration of wealth, 5-star hospitality, luxury entertainment avenues, fine-dining, international standard education and healthcare, it is the global power centre of India in every sense of the term.

# Maximum City's nerve centre.

Standing proudly at the heart of Mumbai with impeccable connectivity to the whole city, it today commands awe and respect in the hearts of the well-heeled.





Reference Image



# The HQ Central of the corporate world.

As the hub for conglomerates of huge proportions, BKC attracts the highest number of international companies in India, especially dominating the banking, financial and professional services sectors.



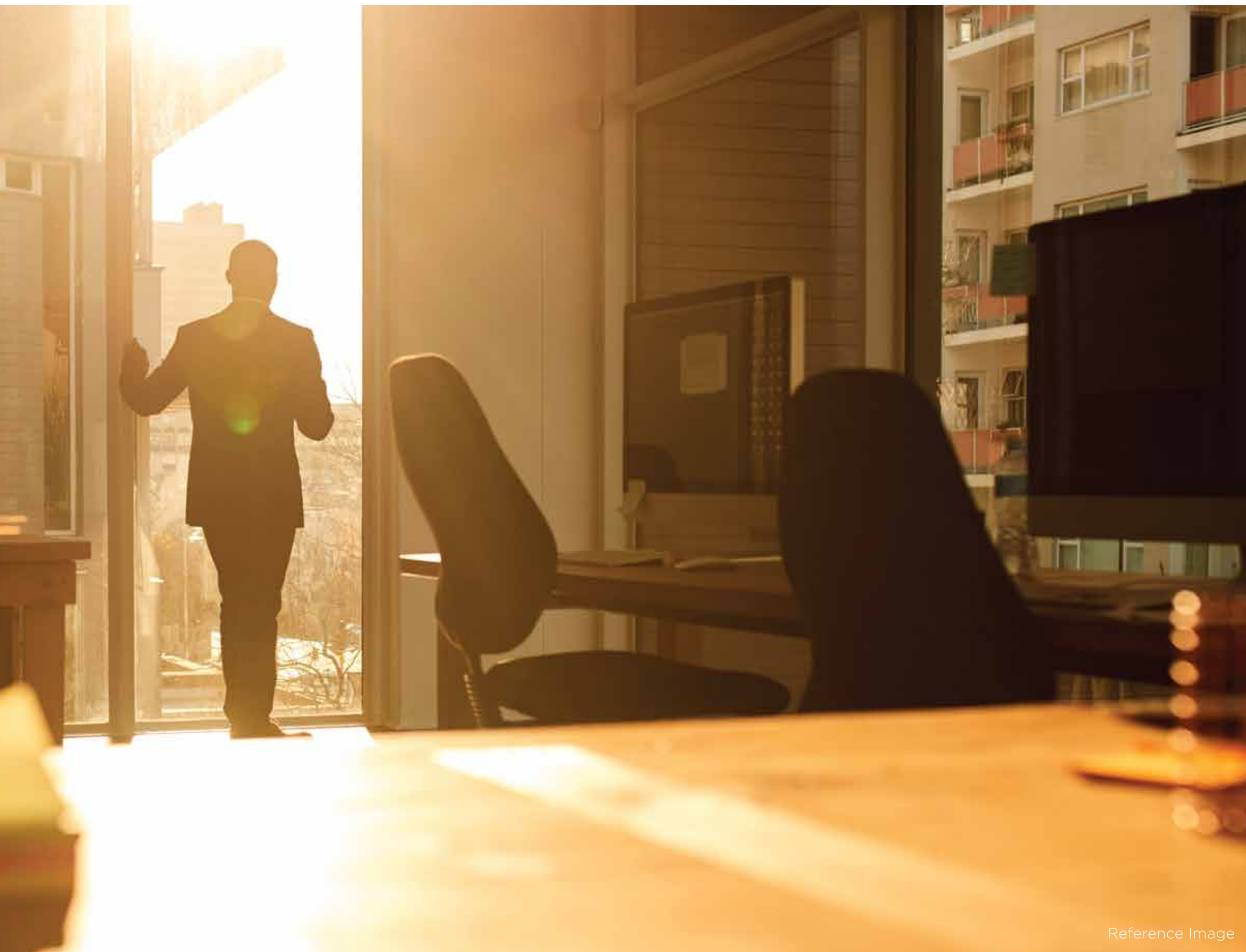
Reference Image

## Where CEOs live, work and thrive.

The who's who of the business world converge at the country's most dynamic economic region, every single day. This positions BKC uniquely as a playground of innovation, R&D and game-changing disruption that plays a crucial role in global economy.







Reference Image



## Iconic global lifestyle at the city's epicentre.

This global mini-metropolis with a breathtaking skyline is the epitome of luxury living and lifestyle in Mumbai, which consolidates its reputation as the hotbed of a global business avenue and the lifestyle center of India.



Reference Images

# BKC

## Shaping up to be India's only global address.

It only gets better from here for BKC as major infrastructural projects have been planned in and around the neighbourhood, driving its appeal several notches higher.



Upcoming Metro Lines 2 & 3



Proposed World's First Passenger Hyperloop



Proposed Dedicated Helipad



Smart BKC 3.0 initiatives





Reference Image

# Mumbai's Iconic Business Address

BKC is Mumbai's only low-supply but high-demand luxury residential market—in which only 14% of the total area is earmarked for residential developments. And that's what makes this neighbourhood at BKC the most influential, vibrant and secure not just in Mumbai, but the entire country as well.





Actual Image, Shot at location

# TEN BKC

An island of luxury. An all side open 4.9-acre plot at the heart of Bandra Kalanagar Complex, TEN BKC is a premium destination where the design and execution don't just meet international standards, but surpass it too. TEN BKC is soon going to be a historic meeting place for the power elite, who have a penchant for all things magnificent as well as effective.







Artist's Impression

## Connectivity

	Western Express Highway	0.5 kms
	Bandra Railway Station (E)	1.2 kms
	Sion - BKC Connector	2.8 kms
	Eastern Express Highway	3.8 kms
	Bandra-Worli Sea Link	4.8 kms
	Santacruz-Chembur Link Road	5.2 kms
	Domestic Airport	5.6 kms
	Eastern Freeway	7.7 kms
	International Airport	8.7 kms





Reference Image

# Say hello to India's most premium way of life.



## LUXURY HOTELS

- Trident
- Sofitel
- Grand Hyatt
- Taj Lands End



## FINE DINING

- Yauatcha
- Otto Infiniti
- Masala Library
- Smoke House Deli
- Suzette
- Busago Cafe
- California Pizza Kitchen
- Le Pain Quotidien



## HEALTHCARE

- Lilavati Hospital & Research Centre
- Asian Heart Institute
- Holy Family Hospital
- Hinduja Hospital
- S L Raheja Hospital



## EDUCATION

- Dhirubhai Ambani International School
- American School of Bombay
- Arya Vidya Mandir
- St. Andrews High School and College
- RD National College
- Thadomal Shahani Engineering College
- Mount Litera International School



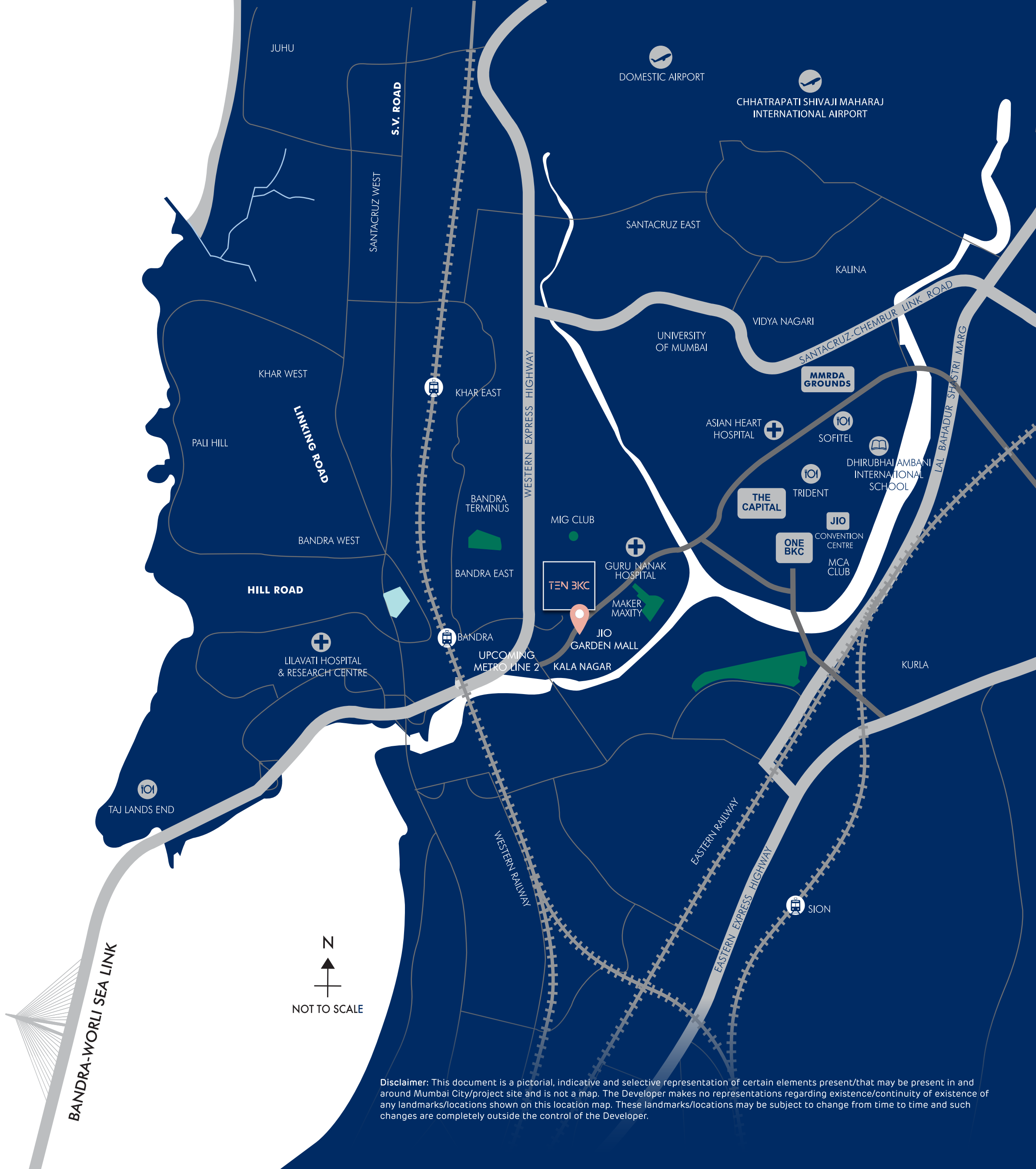
## RETAIL

- Jio World Drive
- Maker Maxity
- Phoenix Market City
- High Street Shopping - Bandra



## RECREATION

- Jio World Garden
- Jio Convention Centre
- MCA Club
- Bandra Gymkhana
- MMRDA Concert Grounds
- MIG Club



Disclaimer: This document is a pictorial, indicative and selective representation of certain elements present/that may be present in and around Mumbai City/project site and is not a map. The Developer makes no representations regarding existence/continuity of existence of any landmarks/locations shown on this location map. These landmarks/locations may be subject to change from time to time and such changes are completely outside the control of the Developer.

# This edifice won't need any introduction. And neither will its residents.

- A fast-moving project
- Timely delivery assurance
- 200+ Slabs cast in last 1 year

## Project Details

- 4.9 acres. One of the largest integrated residential complexes in upscale Bandra
- 2.9 acres of open spaces
- 5 basement car parks
- 45,000 sq.ft. luxury entrance lobby
- 15 Wings
- 3 & 4 Bed Luxury Suites
- Project architecture by Padma Bhushan Awardee Architect Hafeez Contractor

## Key Features

- Rare and ideal location—perfect access from all 4 directions
- Z-shaped design concept—the form of the building ensures no two flats overlook each other
- Outward-looking views
- Top-notch amenities on the ground and first floors
- The highest standards of security





Artist's Impression



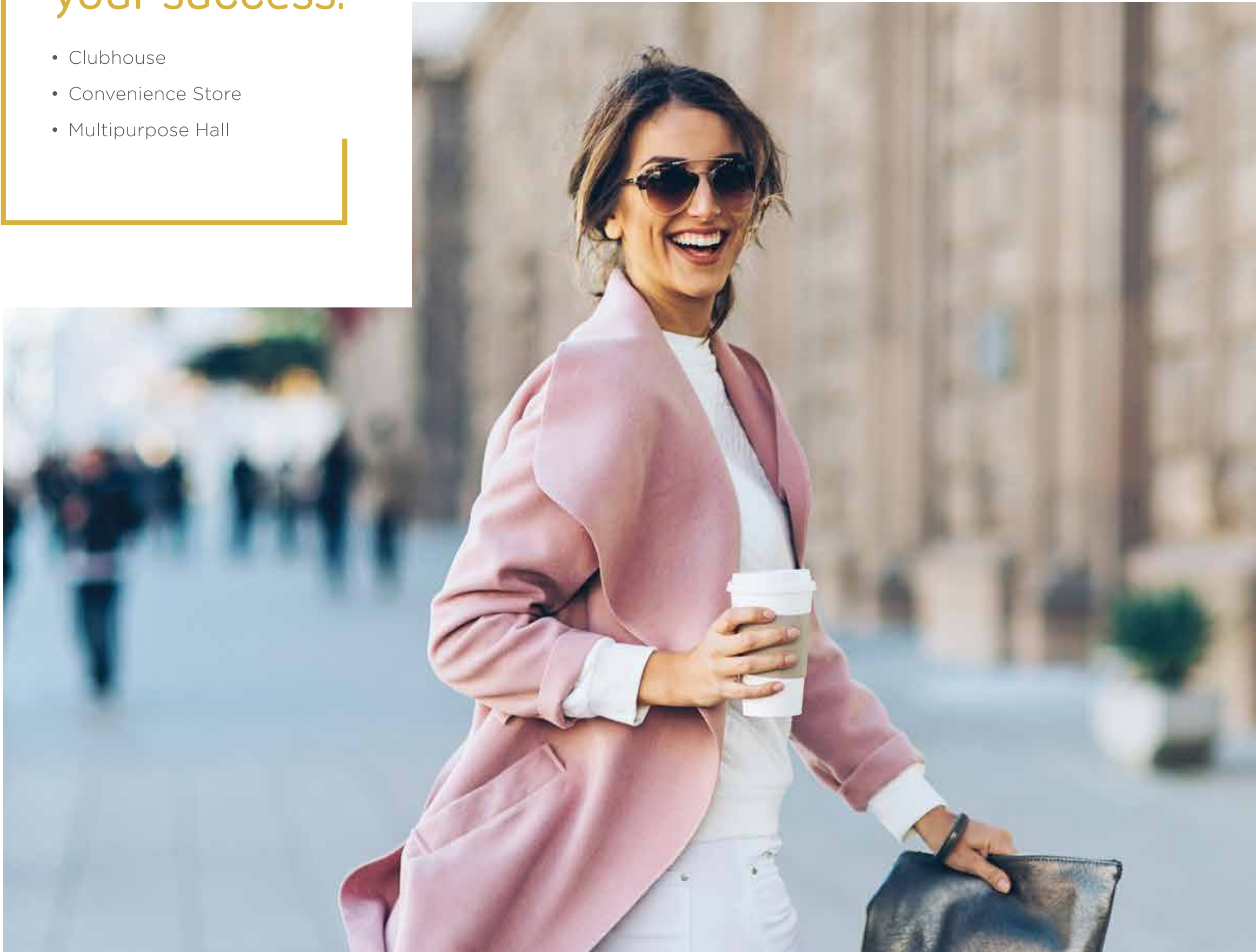


Here's how  
the crème de la crème  
deserve to take a  
strategic time-out.



# The vision of a life, styled around your success.

- Clubhouse
- Convenience Store
- Multipurpose Hall





Reference Image



Reference Image



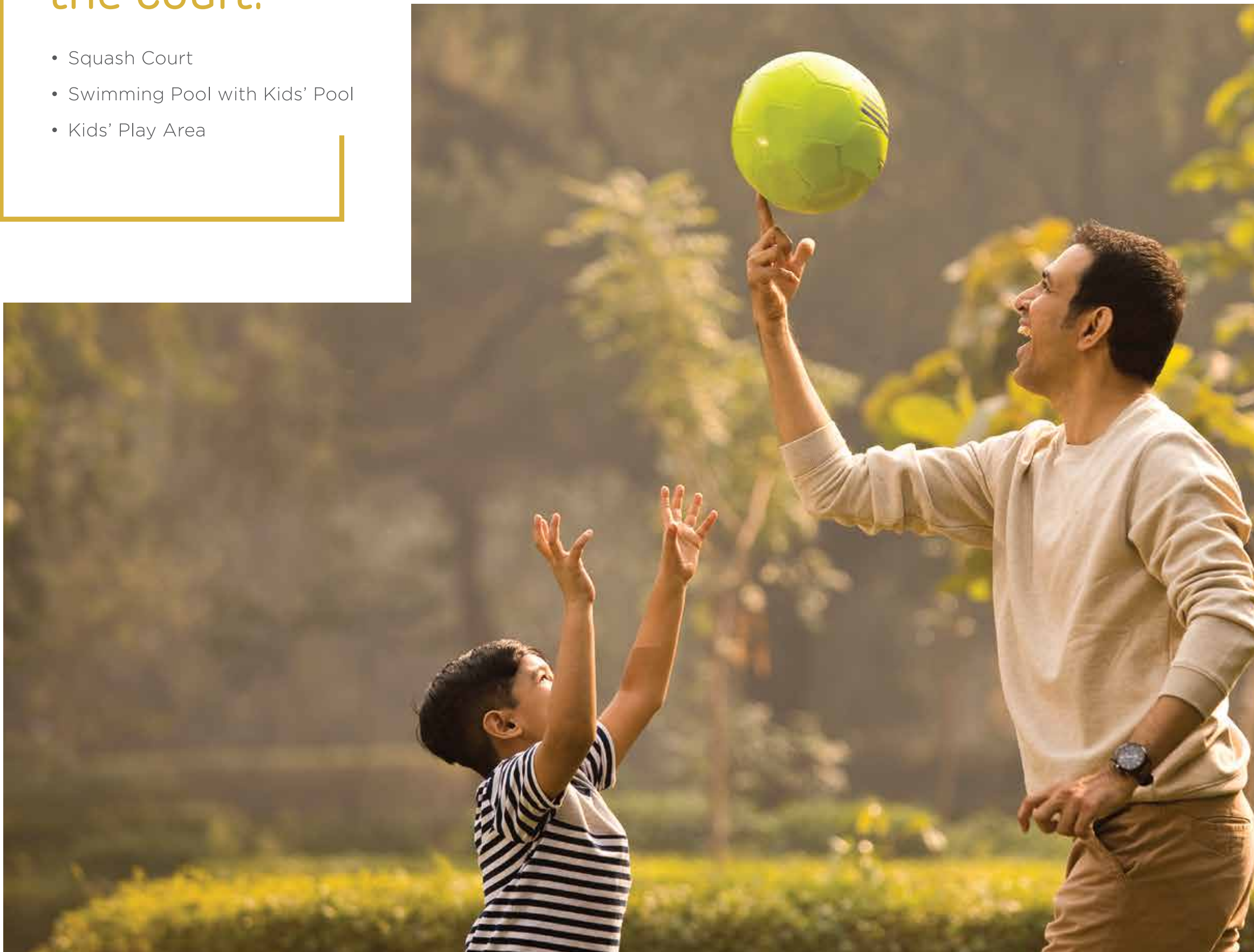
Reference Image



Reference Image

## Game changers, welcome to the court.

- Squash Court
- Swimming Pool with Kids' Pool
- Kids' Play Area



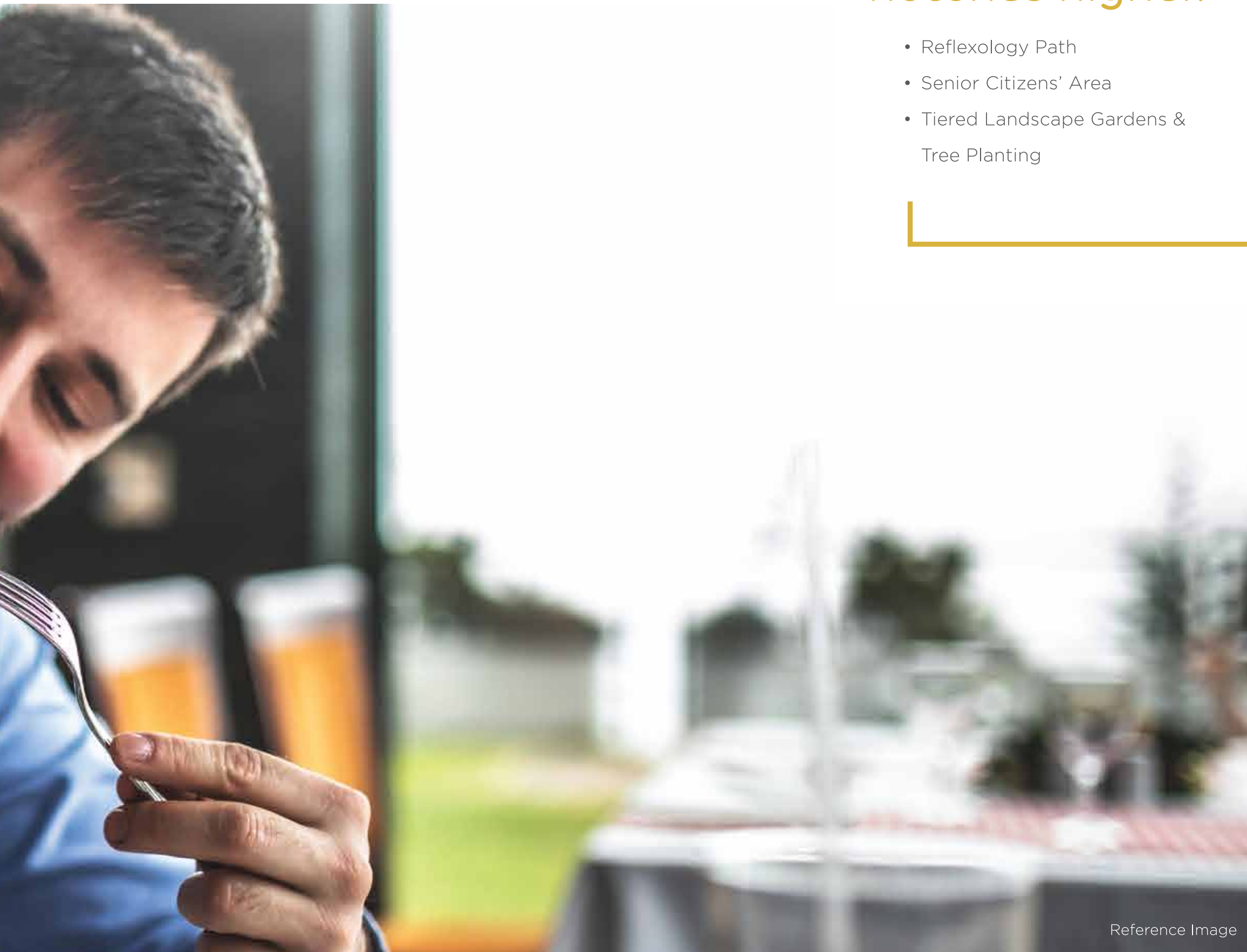


**Disclaimer:** The images of public places are included in the printed material so that prospective buyer get a fair idea of the landscape in and around the general macro-region of the Project.



Enjoy a downtime  
which uplifts your mood several  
notches higher.

- Reflexology Path
- Senior Citizens' Area
- Tiered Landscape Gardens &  
Tree Planting



Reference Image

Experience solitude,  
before you go conquer  
the world.

- Fitness Centre
- Salon & Spa
- Game Simulator









World Changers,  
Trailblazers, Universe Shakers.  
Welcome home.

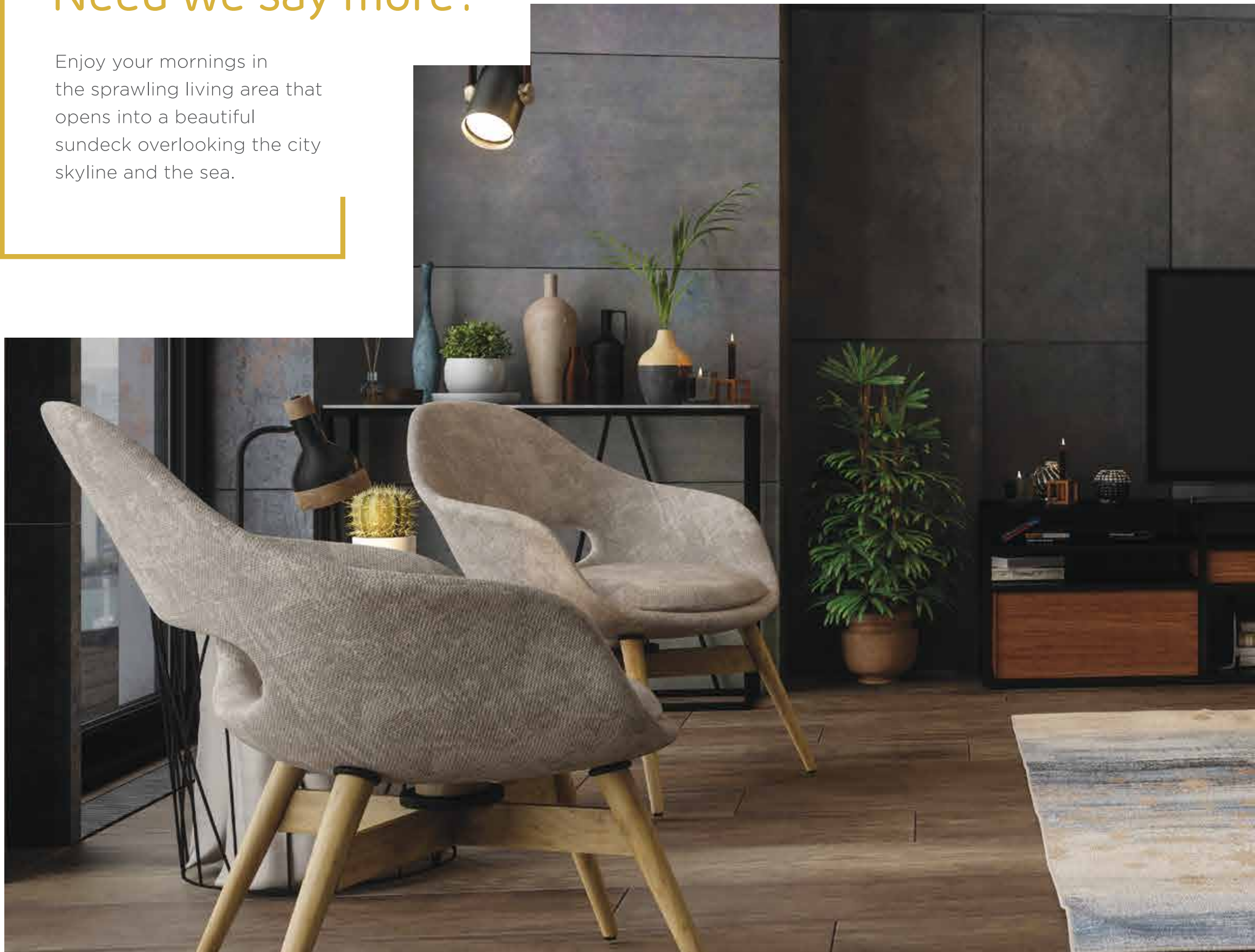


Reference Image

**Disclaimer:** The Furniture, fixtures, artefacts, equipment's and fittings are used to indicate a conceptual lifestyle and are not part of the actual offerings.

Lavish living spaces.  
A picturesque view.  
Need we say more?

Enjoy your mornings in the sprawling living area that opens into a beautiful sundeck overlooking the city skyline and the sea.





Reference Image

Disclaimer: The Furniture, fixtures, artefacts, equipment's and fittings are used to indicate a conceptual lifestyle and are not part of the actual offerings.



# After conquering boardrooms, this is where you should unwind.

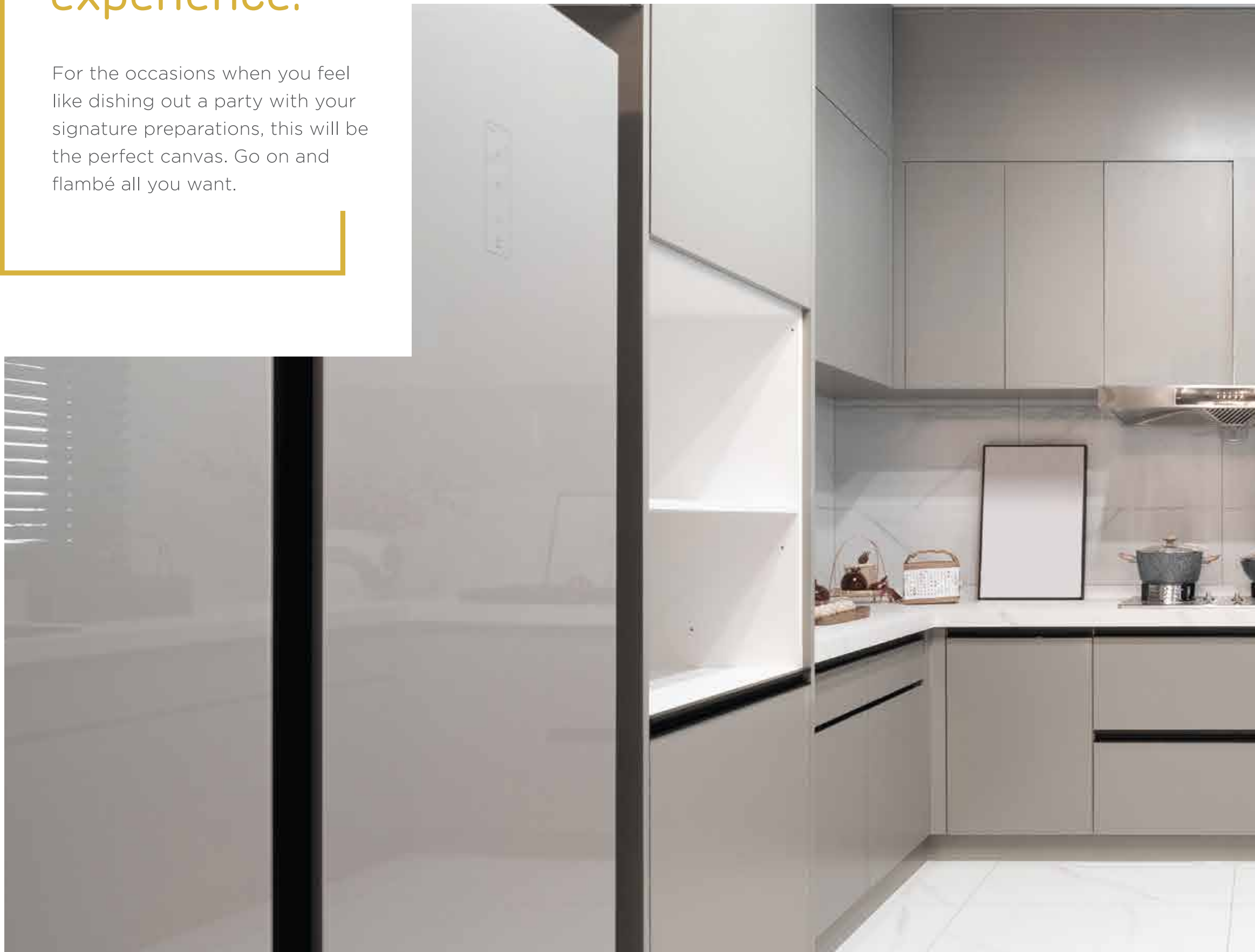
Return to the cozy environs of your master bedroom that just lets you be. Settle in, unwind, relax, for you've definitely earned it.



Reference Image

# Celebrate your successes with a refined culinary experience.

For the occasions when you feel like dishing out a party with your signature preparations, this will be the perfect canvas. Go on and flambé all you want.







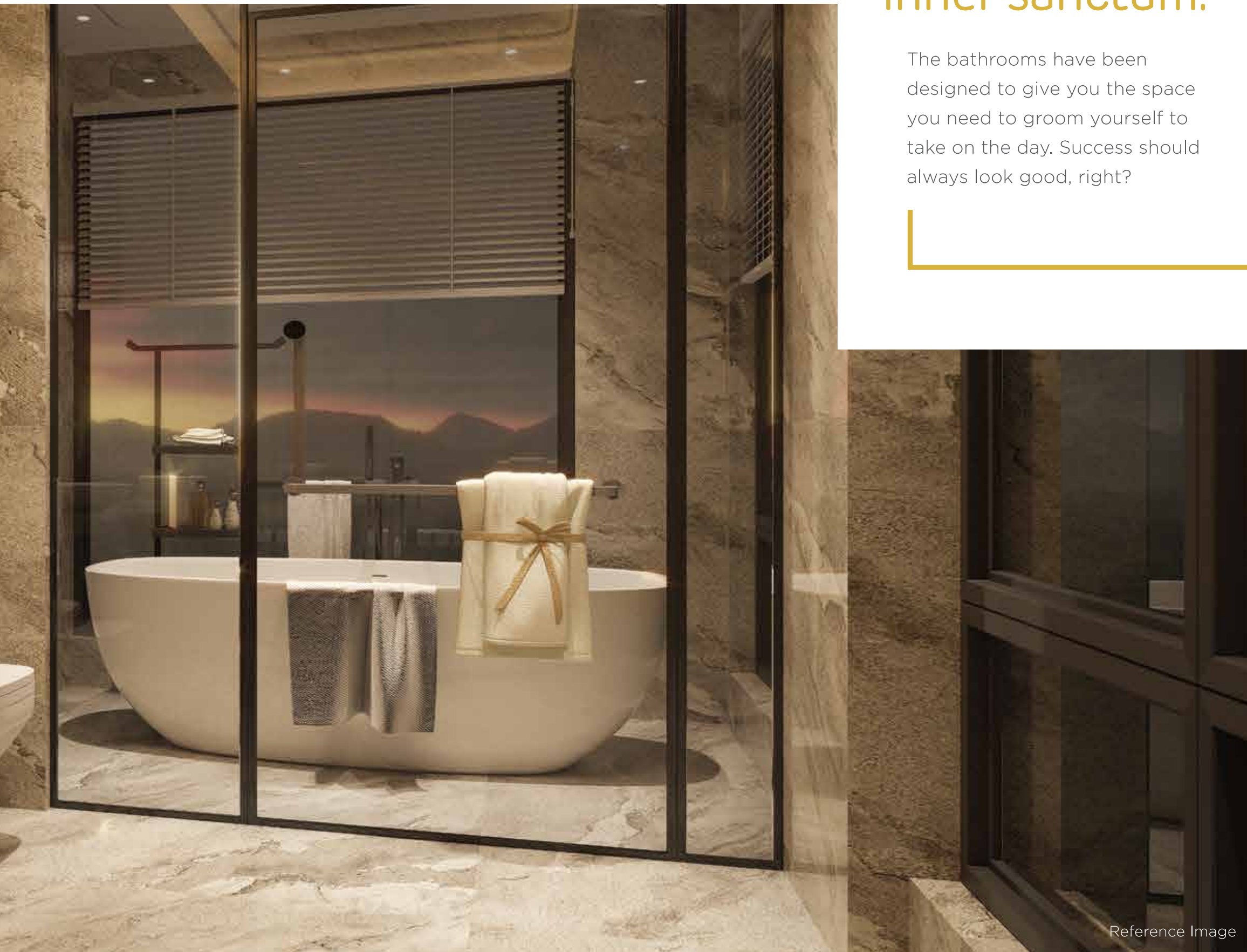
Reference Image

**Disclaimer:** The Furniture, fixtures, artefacts, equipment's and fittings are used to indicate a conceptual lifestyle and are not part of the actual offerings.



# Escape to your inner sanctum. Within your inner sanctum.

The bathrooms have been designed to give you the space you need to groom yourself to take on the day. Success should always look good, right?



Reference Image

# Fall in love with the city. Every single day.

Stand tall, stare into the majestic  
openness that surrounds your  
home and fills it with grandeur.  
Its mesmerising views comprise  
of lush green landscapes, bustling  
BKC and vibrant cityscapes.





Reference Image

## Master layout Slice view at ground level.

- 1 Tiered Landscape Gardens
  - 2 Walking Path
  - 3 Kids' Play Area with Play Equipment
  - 4 Swimming Pool
  - 5 Kids' Pool
  - 6 Reflexology Path
  - 7 Senior Citizens' Area
  - 8 Entrance Sculpture
  - 9 Clubhouse
  - 9.1 Multipurpose Hall
  - 9.2 Squash Courts
  - 10 Welfare Centre
  - 11 Game Simulator
  - 12 Salon and Spa
  - 13 Convenience Store
- \*Fitness Centre (Upper Floor)





Artist's Impression



Disclaimer: The images of public places are included in the printed material so that prospective buyer get a fair idea of the landscape in and around the general macro-region of the Project.

# TEN 3KC

**WEBSITE:** [www.adanirealty.com](http://www.adanirealty.com)

**ADDRESS:** Near MIG Cricket Club, Kala Nagar, Bandra East, Mumbai, Maharashtra 400051.

---

**MAHARERA REG. NO. P51800004889 AVAILABLE ON MAHARERA.MAHAONLINE.GOV.IN**

**Disclaimer:** The photographs, images, videos, plans, drawings, sketches, renderings, pictorial and graphical representations, specifications, illustrations, other information etc. contained in the brochure /marketing collateral are typical stock/standard photography used by the industry at large and are intended to indicate a conceptual and aspirational lifestyle. The plans, layout, design, facilities, amenities are subject to approval of the concerned authorities. The pictures and images along with fixtures and fittings are shown herein above are not part of the offerings in the Project. The same is just for reference and indicative purpose only. The information and material contained in this brochure /marketing collateral are intended to supplement the information available on the website of MahaRERA and is not intended to be a substitute thereto. Any person who is considering/evaluating any apartment in the Project, are required to independently analyse, acquaint and familiarise themselves with the information and disclosures pertaining to the Project as uploaded on the website of MahaRERA. These printed material does not constitute an offer and / or contract of any type between the Developer and the recipient. All transactions in respect of this Project shall be subject the terms and conditions of the agreement for sale entered between the Developer and the Purchaser. The Project is funded by HDFC Limited.