

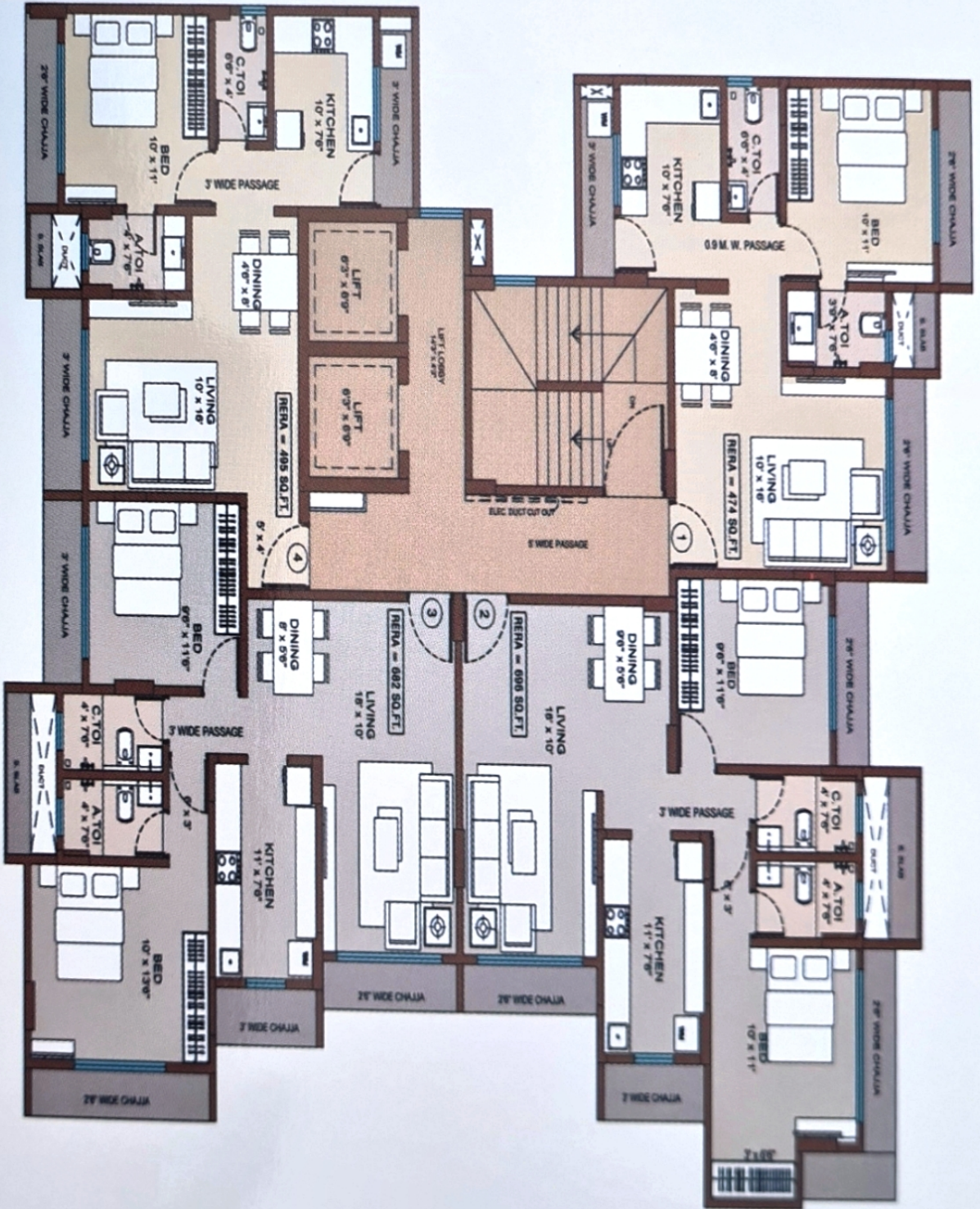
SHREE SAI SHARAN

AT PUMP HOUSE, ANDHERI (EAST)

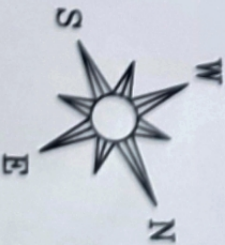
LAVISH 1, 2 & 3 BHK



MAHARERA No. : P51800049814



TYPICAL FLOOR PLAN





11th FLOOR PLAN



INTERNAL AMENITIES

- ▶ Intercom From Entrance Lobby To Each Flat
- ▶ Branded Geysers In All Bathrooms
- ▶ Jaquar C. P. Sanitary Fittings
- ▶ Vitrified Floor Tiles (1200 x 600) Kajaria Make In All Flats
- ▶ Kajaria Make Granite Kitchen Platform With Stainless Steel Sink (Nirali Make)
- ▶ Conceal CPVC & UPVC Of Astral & Prince Make
- ▶ Branded Door Shutter And Hardware Fitting
- ▶ Polycab Frls Wiring & Legrand Myrus Series Switches
- ▶ Jindal Brand (25 x 65) Aluminium Window With Asahi Blue Tined 5mm Glass
- ▶ Birla Wall Putty With Asian Apcolite Emulsion Paint
- ▶ Jaquar Sanitary & Cara Make Basin
- ▶ CCTV Surveillance With 24 x 7 Security

EXTERNAL AMENITIES

- ▶ Double Heighted Grand Entrance Lobby
- ▶ External Asian Ruff Tuff Texture With Apex Ultima Finish
- ▶ Branded City Lift 2 No. Elevator For Residents (10 Passenger only)
- ▶ Spacious Lift Lobby Passage With Kajaria Tiles Finish
- ▶ Gym With Open Sky Terrace Garden
- ▶ Stack Car Parking 2 And 3 At Stilt Level
- ▶ Generator Back For Lift And Other Common Area
- ▶ Advanced Fire Fighting Equipments In Common Area