

AN ADDRESS TO
Raise Your
LIFESTYLE TO THE SKY

Your dreams have many stories to tell. A dream to rise above the ordinary. A wish to live above your expectations. What if an address emerges to elevate your social standing with a lifestyle you've always dreamt of?

Welcome to a dream world taking shape around the fastest growing central node of Mumbai, Kurla-East. Experience a lifestyle that's meant to upgrade the benchmark of living. Discover the exclusivity of the high-rise living, with its lavish amenities and seamless connectivity, signifying a life upgraded with comfort and sophistication. Witness a life which not only enhances personal well-being but also reflects a higher status, making it a desirable choice for you and your family.

Welcome to Ruparel Crest.



Live with
HEADS-HIGH TO THE SKY



Project Hallmarks

- A Magnificent Tower of G+18* Storeys with 3 Wings
- Located on Prime Address right next to Kurla Station
- 18+ Sky-lifestyle Club Features on Rooftop
- Dedicated Vehicle Parking Tower
- Advanced Security & CCTV Surveillance
- Shops on Ground & 1st floor

Kurla-East

A WELL-CONNECTED WORLD OF UNPARALLELED OPPORTUNITIES



Excellent Infrastructure

Excellent connectivity to Southern and East Mumbai via Eastern Freeway and Eastern Express Highway, easy access to Airport and Western Suburbs via Andheri-Kurla Road and SCLR, proximity to Kurla Station & Tilak Nagar Station connecting Western & Central Mumbai and Navi Mumbai respectively while Mumbai Metro Line 2A/2B connecting Navi Mumbai and Central Mumbai efficiently.

Business within Reach

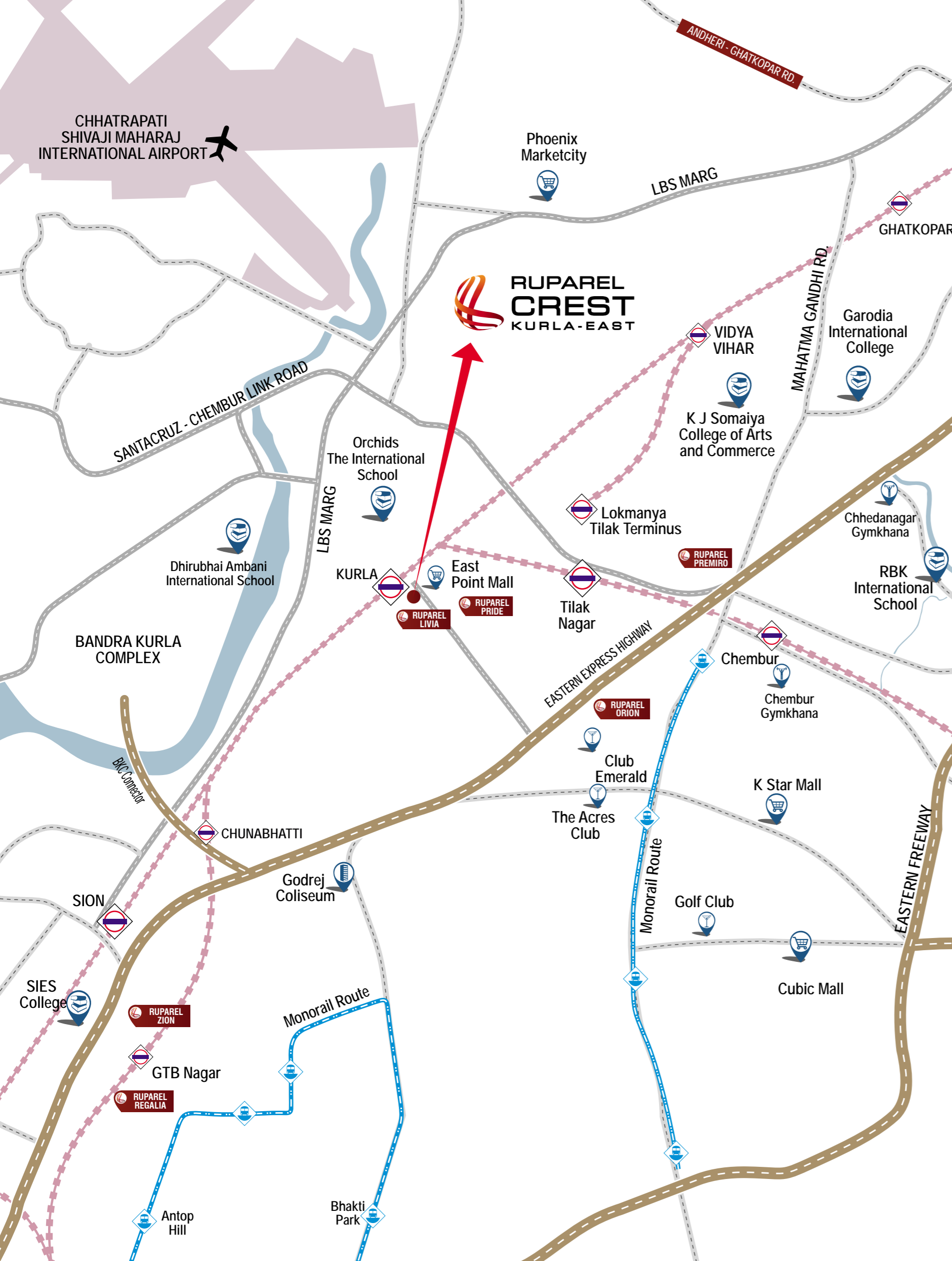
Proximity to Commercial Centres like Bandra-Kurla Commercial Center, Godrej Coliseum and reputed institutes like Godrej & Boyce and easy access to major IT and Pharma Companies in Mumbai, Thane and Navi Mumbai and Central Mumbai efficiently.



Centre of Conveniences

Kurla East epitomizes convenience with its strategic location, housing major shopping and entertainment hubs like Phoenix Market City, East Point Mall etc. With prominent education and healthcare centres like Orchids International School, K.J. Somaiya College, V Care Hospital and Sai Hospital nearby, it is a one-stop destination to entertainment, leisure and lifestyle.





A HAPPENING LIFESTYLE ADDRESS WITH COUNTLESS PRIVILEGES



CONNECTIVITY

- Kurla Station - 1 min
- SCLR - 3 mins
- Tilak Nagar Station - 5 mins
- Eastern Express Highway - 5 mins
- Lokmanya Tilak Tarminus - 7 mins
- BKC Connector Road - 7 mins
- Chembur Station - 8 mins
- Chembur Monorail - 10 mins
- Eastern Freeway - 10 mins



HEALTHCARE

- V Care - 2 mins
- Sushrut Hospital - 6 mins
- Surana Sethia - 8 mins
- City Hospital - 9 mins
- K.J. Somaiya Medical College - 10 mins
- Sai Hospital - 10 mins
- Inlaks Hospital - 15 mins
- Baba Hospital - 18 mins



EDUCATION

- K. J. Somaiya College of Arts & Commerce - 9 mins
- ORCHIDS The International School - 10 mins
- RBK International School - 10 mins
- Garodia International College - 11 mins
- SIES College of Arts, Science & Commerce - 12 mins
- Dhirubhai Ambani International School - 14 mins



LIFESTYLE & SHOPPING

- East Point Mall - 1 min
- K Star Mall - 12 mins
- Cubic Mall - 15 mins
- Jio World Drive - 15 mins
- Phoenix Market City - 15 mins
- R City Mall - 20 mins



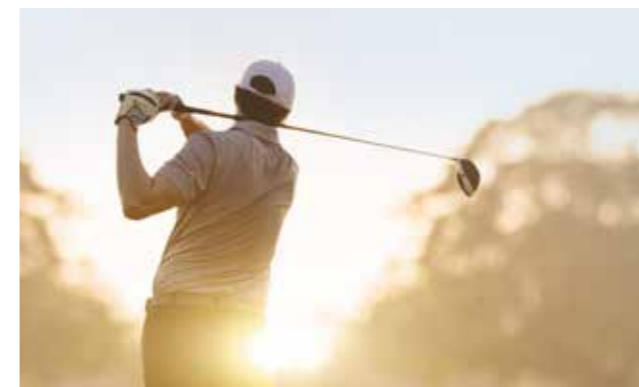
SOCIAL AVENUES

- Club Emerald - 8 mins
- Cheddanager Gymkhana - 8 mins
- The Acres Club - 10 mins
- Chembur Gymkhana - 10 mins
- BKC - 10 mins
- Golf Club - 12 mins



BUSINESS CENTRES

- Godrej Coliseum - 7 mins
- BKC - 14 mins
- Godrej & Boyce Industry Estate - 21 mins



Representational Images



Raise Your

**EXCLUSIVE
LIFESTYLE**

**ONE-OF-A-KIND HEALTH, LEISURE &
CLUB AVENUES ON ROOFTOP**

A WORLD RISES TO INDULGE IN THE SKY

MOST-INDULGENT LEISURE, RECREATION AND
WELLNESS AVENUES ON ROOFTOP

AMENITIES

- SWIMMING POOL
- KID'S POOL
- PERGOLA SEATING
- PARTY DECK
- JUICE BAR
- CHANGING & SHOWER
- BAMBOO GARDEN
- AROMA / FLOWER GARDEN
- GAZEBO SEATING /
SR. CITIZEN CORNER
- WATER FEATURE
- COVERED SEATING
- PARTY LAWN
- SKY WALK
- ACUPRESSURE /
REFLEXOLOGY PATHWAY
- LIVE SIZED CHESS BOARD
- SANDPIT WITH WALL
CLIMBING
- AMPHITHEATRE & OPEN
MINI THEATRE
- CRICKET NET
- CHILDRENS PLAY AREA
- FITNESS CENTER

▼
**FRESHNESS IMMERSSES,
SOOTHE RISES**

INFINITY SWIMMING POOL WITH KID'S POOL



▼
**LET YOUR SPIRITS
GO HIGH**

JUICE BAR WITH PARTY DECK



Artist's Impression



▲
**LIFE RETREATS
AT THE TOP**

SENIOR CITIZEN GAZEBOS WITH SIT-OUTS



Representational Image

▼
**WALK AROUND
THE STARS**

SKY WALK AND ACUPRESSURE PATHWAY



▲
**ASCEND TO
SKY-HIGH SOIREES**

LUSH GREEN PARTY LAWN



▼

UNLEASH THE NEW RISE OF HEALTH

WORLD-CLASS GYMNASIUM WITH MODERN EQUIPMENT



▼

RISE TO THE CINEMATIC HEIGHTS

OPEN-TO-SKY MINI THEATRE



Artist's Impression



▲

CRICKETING-ACTION GOES TO THE TOP

SKY NET CRICKET WITH PRACTICE PITCH

Representational Image

▼
**A PLACE WHERE
HIGH-MINDS PLAY**

LIFE-SIZE SKY CHESS



▲
**LITTLE KINGDOM OF
ELEVATED JOYS**

KIDS PLAY AREA WITH SANDPIT AND WALL CLIMBING



Raise Your
**COMFORT &
CONVENIENCE**

**THOUGHTFULLY DESIGNED
APARTMENT FEATURES AND
TOWER FACILITIES**

A World

TO CHERISH THE HIGH-LIFE



▼
**WHERE GRANDEUR
CELEBRATES YOUR ARRIVAL**

DOUBLE-HEIGHT ARRIVAL LOBBY WITH LOUNGE



THOUGHTFUL CONVENIENCES FOR EXTRAORDINARY EXPERIENCES

TOWER AMENITIES AND FACILITIES



Multilevel Vehicle Parking Tower



Lifestyle and Retail Avenues in Premises



Integrated Security & CCTV Surveillance



High-speed Branded Elevators

RUPAREL SKY GREENS - KANDIVALI (W)
MahaRERA No. P51800012513



RUPAREL PANACHE - SANTACRUZ (W)
MahaRERA No. P51800046597



RUPAREL ARIANA - PAREL
MahaRERA No. P51900003250



RUPAREL SEA PALACE - NERUL
MahaRERA No. P51700005875



RUPAREL PALACIO - KANDIVALI (W)
MahaRERA No. P51800013681

RUPAREL MILLENNIA - PAREL
MahaRERA No. P51900031698



RUPAREL IRIS - MATUNGA (W)
MahaRERA No. P51900005988



RUPAREL PRIMERO - CHEMBUR
MahaRERA No. P51800021096



RUPAREL REGALIA - SION
MahaRERA No. P51900009359



LANDMARKS OF ICONIC LIFESTYLE

DELIVERED
~2.0 MILLION SQ. FT.

UNDER CONSTRUCTION
~6.1 MILLION SQ. FT.

HAPPINESS DELIVERED TO
~3000 FAMILIES



RUPAREL ICON (JEWEL) - PAREL
MahaRERA No. P51900003058



RUPAREL LUMINARE - DADAR (E)
MahaRERA No. P51900034393



RUPAREL OPTIMA - KANDIVALI (W)
MahaRERA No. P51800013701



RUPAREL LIVIA - KURLA
MahaRERA No. P51800026450



RUPAREL WEST SKY - KANDIVALI (W)
MahaRERA No. P51800007630



RUPAREL ZION - SION CIRCLE
MahaRERA No. P51900014944



RUPAREL ORION - CHEMBUR
MahaRERA No. P51800004525



RUPAREL PRIDE - KURLA
MahaRERA No. P51800020602



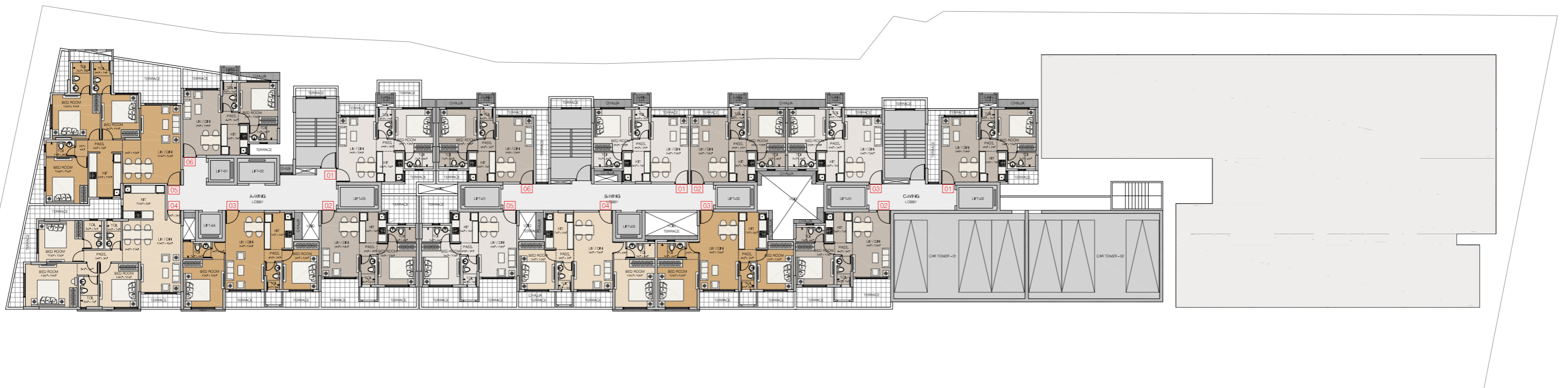
RUPAREL NOVA - PAREL
MahaRERA No. P51900019946



RUPAREL VIVANZA - BYCULLA
MahaRERA No. P51900003595

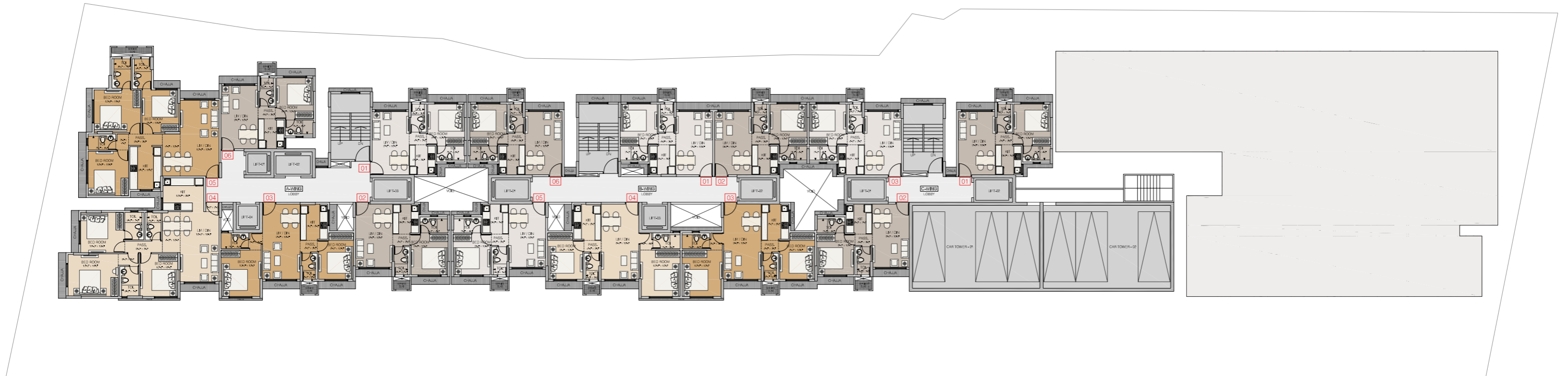


2ND FLOOR PLAN

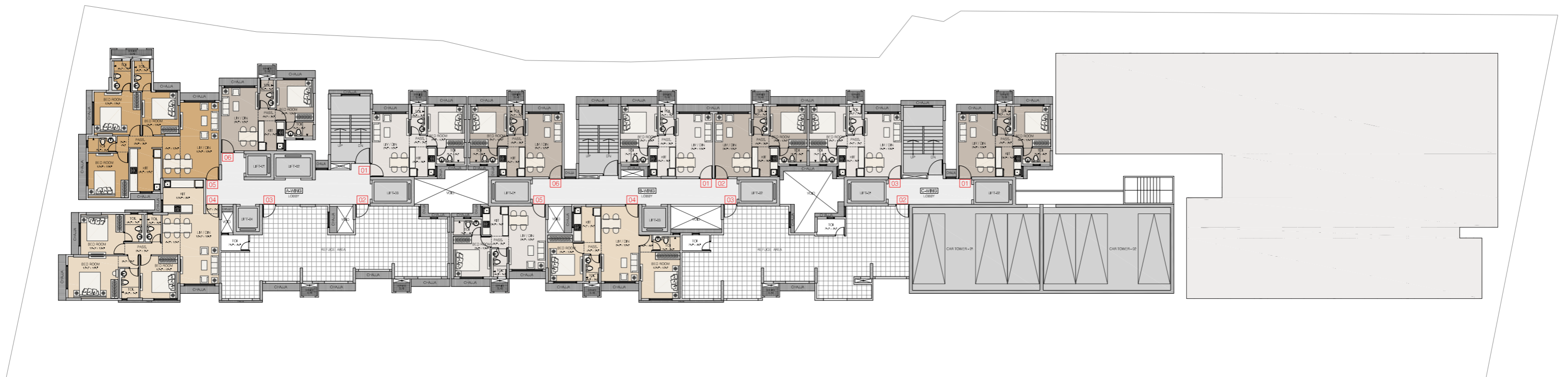


Disclaimer: The sale plans & areas mentioned as indicative only, these are subject to changes as the building approvals, architectural, structural and services design development. Minor Variation/tolerance of +1- of 5% in carpet area may occur on account of design and/or construction exigencies, conversion.

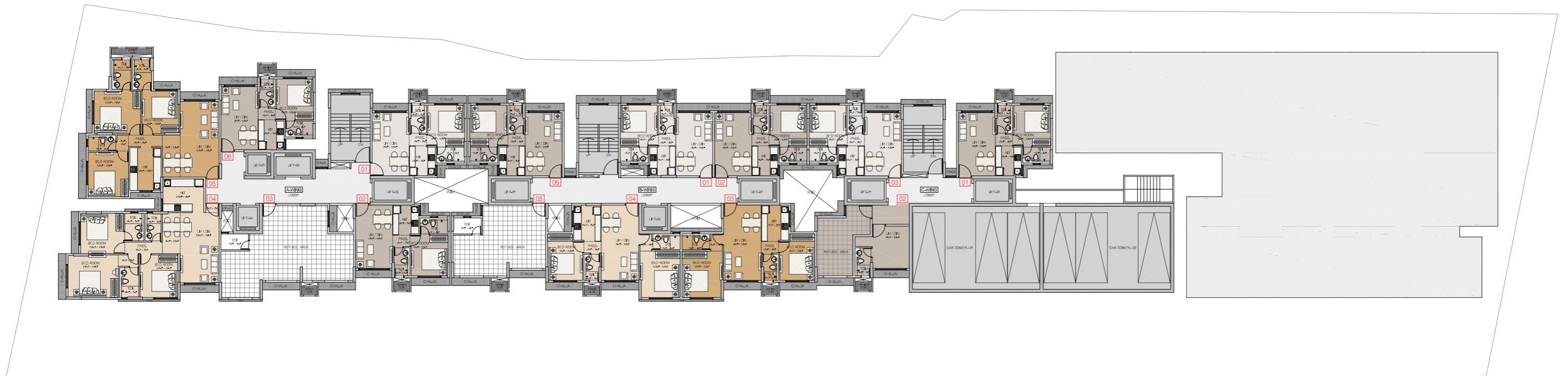
3RD TO 7TH, 9TH TO 14TH, 16TH & 17TH TYPICAL FLOOR PLAN



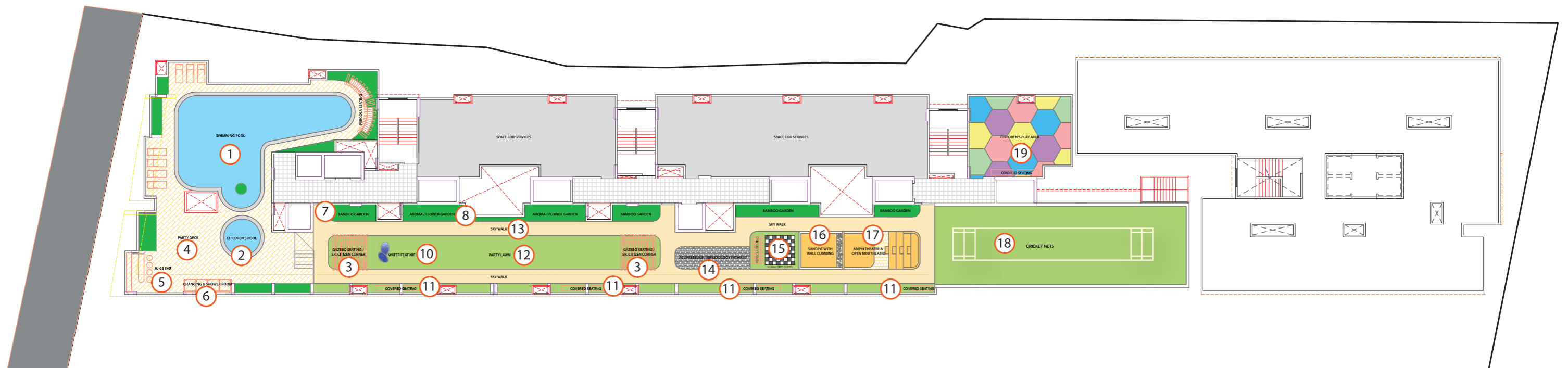
8TH REFUGE FLOOR PLAN



15TH REFUGE FLOOR PLAN



TERRACE PLAN



SWIMMING POOL

CHILDREN'S POOL

PERGOLA SEATING

PARTY DECK

JUICE BAR

CHANGING & SHOWER ROOM

BAMBOO GARDEN

AROMA / FLOWER GARDEN

GAZEBO SEATING/SR. CITIZEN CORNER

WATER BODY

COVERED SEATING

PARTY LAWN

SKY WALK

ACUPRESSURE/ REFLEXOLOGY PATHWAY

HUMAN SIZE CHESS

SANDPIT WITH WALL CLIMBING

AMPHITHEATRE & OPEN MINI THEATRE

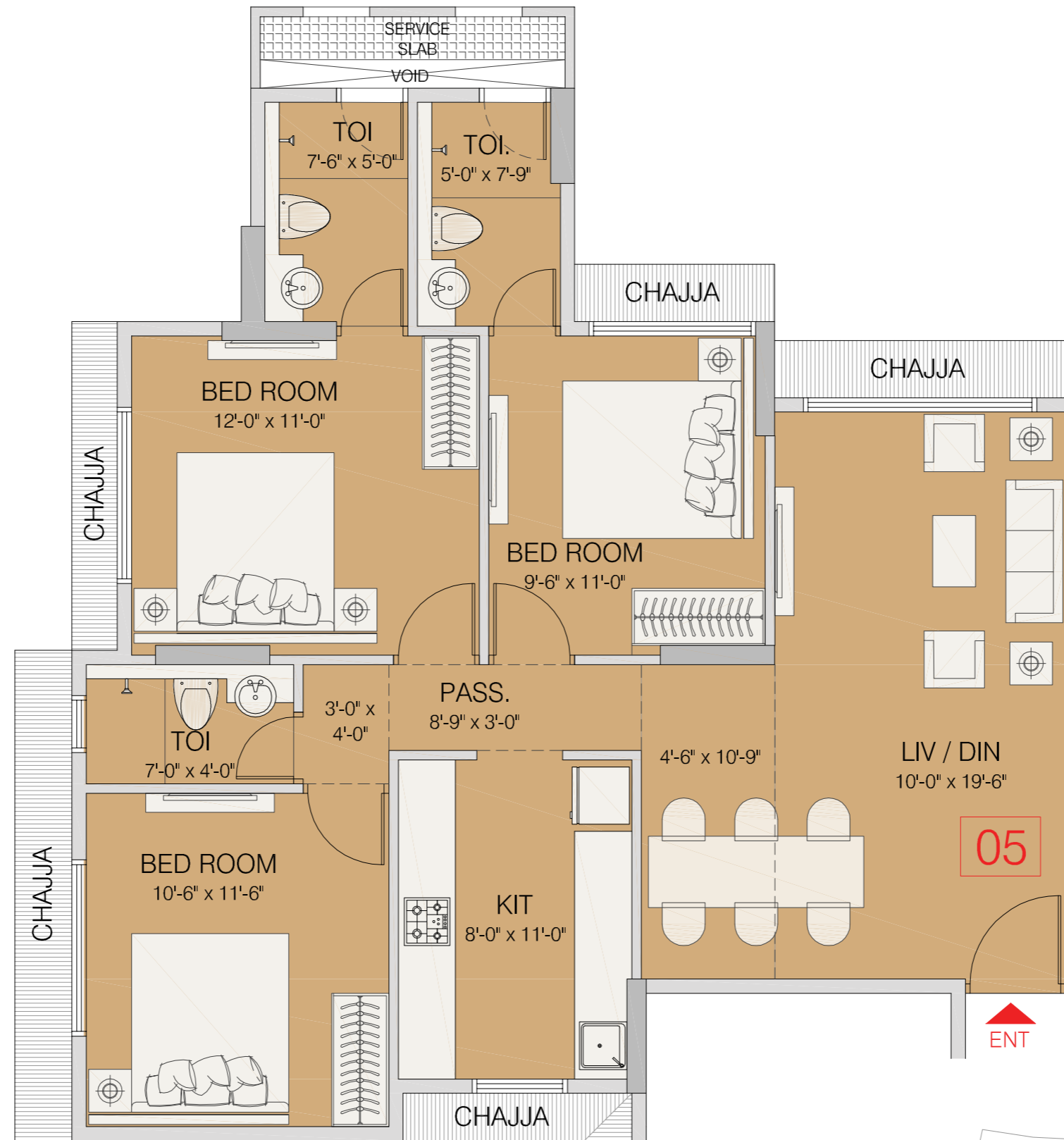
CRICKET NETS

CHILDREN'S PLAY AREA

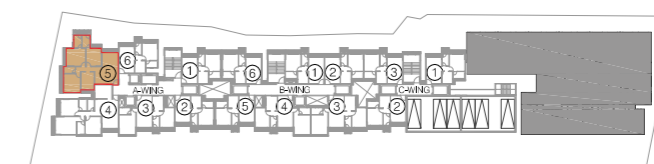
GYMNASIUM



3 BHK - A UNIT PLAN



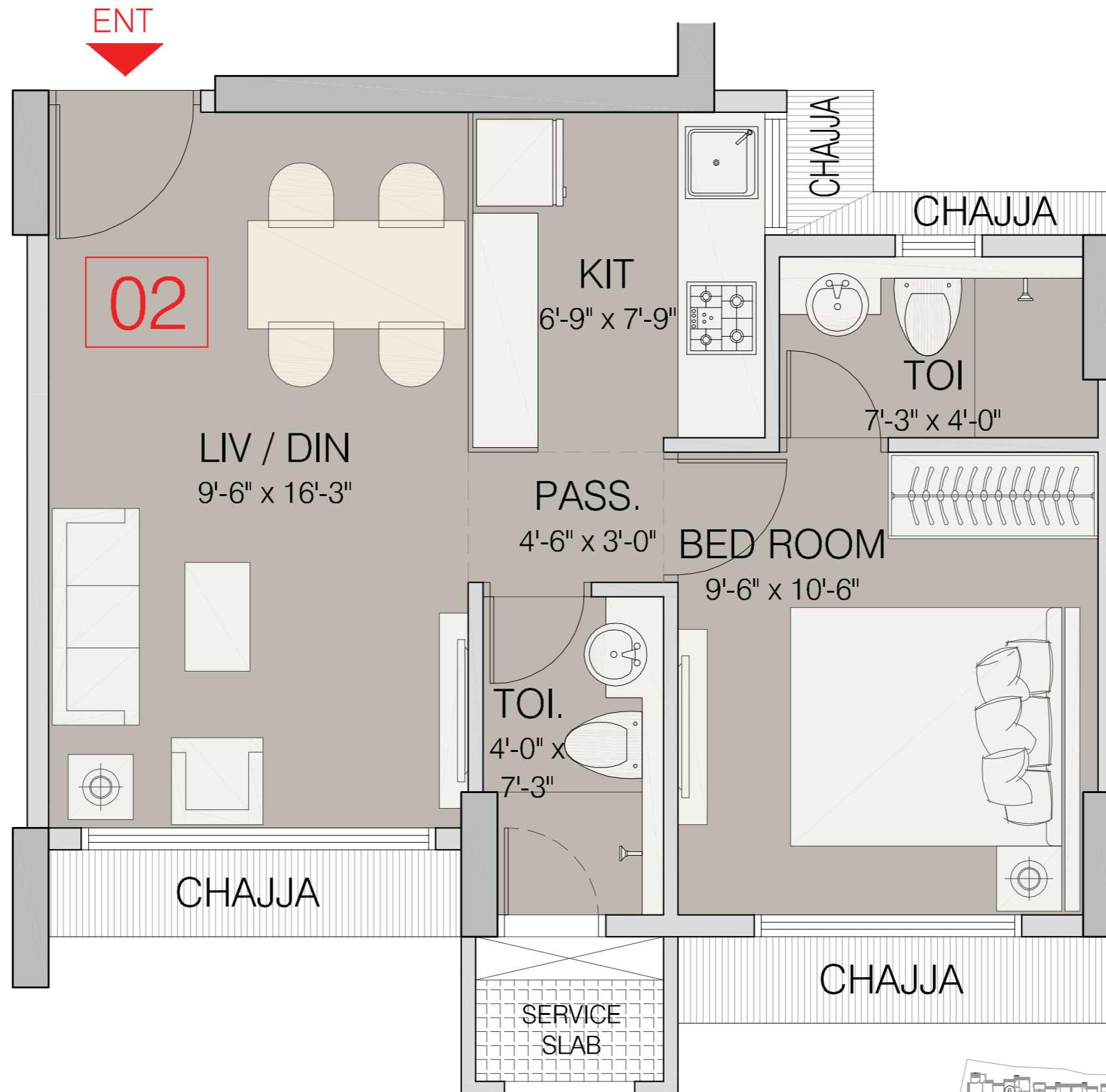
TYPE	RERA CARPET
3 BHK A	870 SQ. FT.



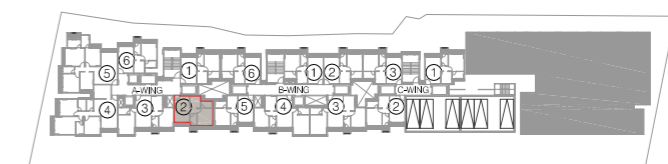
KEY PLAN



1 BHK UNIT PLAN



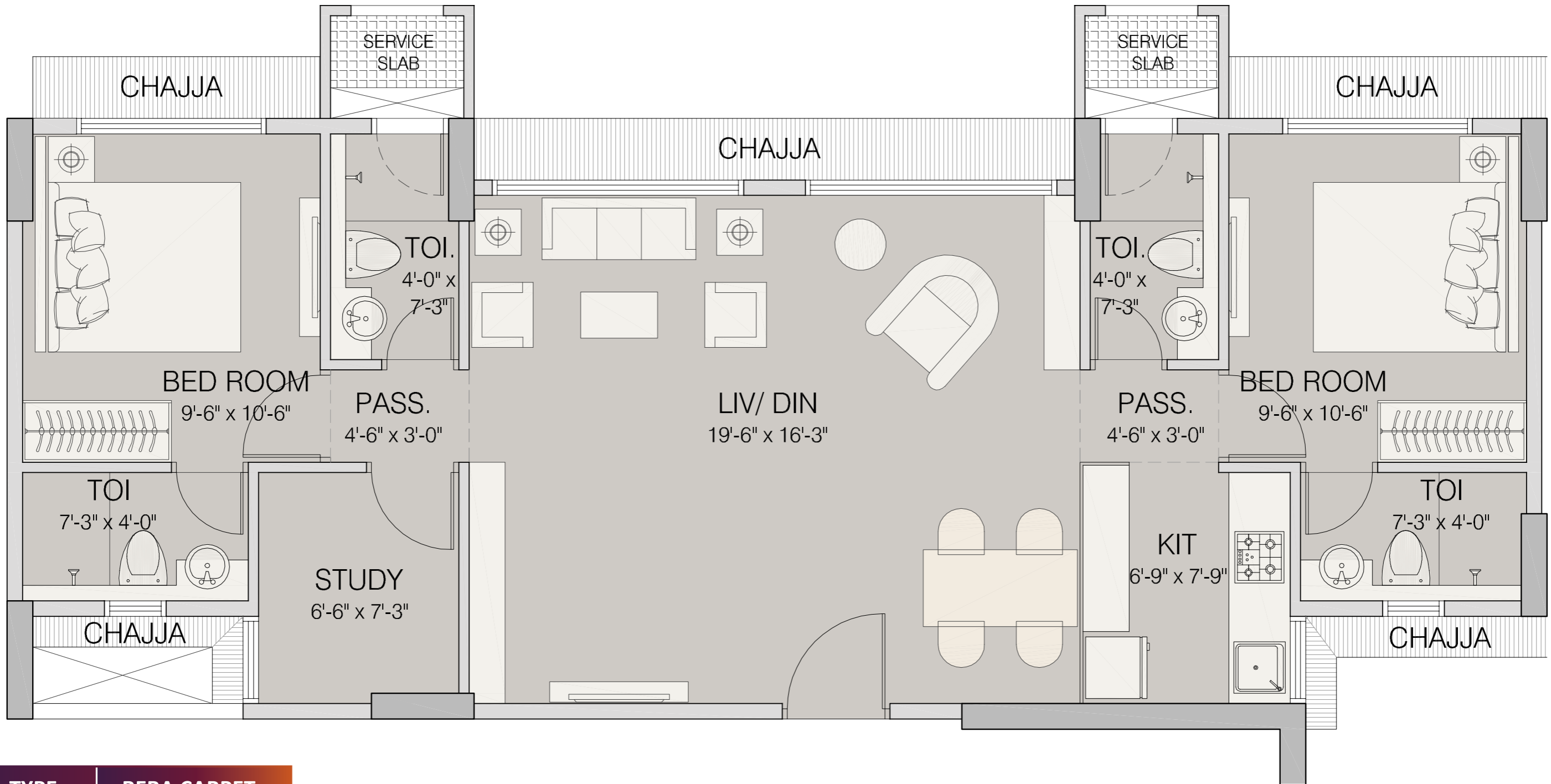
TYPE	RERA CARPET
1 BHK	391 SQ. FT.



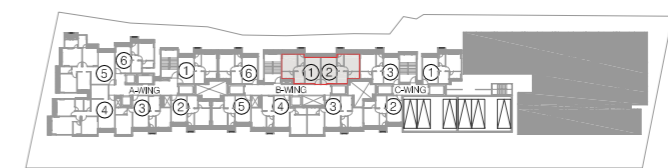
KEY PLAN



JODI FLAT UNIT PLAN



TYPE	RERA CARPET
1 BHK	391 SQ. FT.
1 BHK	391 SQ. FT.
TOTAL	782 SQ. FT.



KEY PLAN

