

PASSCODE

# BIG SHOW

FOR BIGGER LIFE

STAR LIFESTYLE BLOCKBUSTER PROJECT

PREMIER CONNECTIVITY & COMFORT



PREMIER CONNECTIVITY & COMFORT

BLOCKBUSTER LIFE WITH EPIC VIEW

KANDIVALI - WEST



# BE THE PART OF BLOCKBUSTER PROJECT

Majestic 2 BHK homes facing mesmerizing panoramic view with exceptional lifestyle.

With the grand success of Project Veena Smart Homes, the city's most prestigious address is now home to a selected few. The smart home layouts and its finest amenities were loved and well-appreciated by customers.

Back on popular demand, we are coming with a new tower "Passcode Big Show" with Exclusive 2 BHK Apartments with a lifetime mesmerizing panoramic view to give a luxurious touch to your daily life at Kandivali-West.

Passcode Big Show has a rich array of amenities that will provide residents an unparalleled lifestyle experience with exclusive rooftop amenities and elite sky lobbies especially designed to cater to residents and their guests for memorable gatherings and events.

Ground+ 40 storey tower with modern amenities and a picture-perfect view that becomes more beautiful as the level increases.

WAKE UP IN THE LAP OF NATURE  
FROM THE COMFORT OF YOUR ROOM AND  
SOAK IN THE FINEST PANORAMIC VIEW



Actual View from Site



Scan for 360° view



BE THE HERO OF  
THE BIG SHOW  
OF YOUR LIFE

---



Living Room

Reference Image



Bedroom

Reference Image



Kitchen

Reference Image



Bathroom

Reference Image

## Apartment Features & Amenities

If the architectural grandeur and well-connected location has impressed you so far, the elegance of your living space has much more to offer. With its thoughtful space designing and handpicked internal amenities, your home at Passcode Big Show is no lesser than a private world of privileges crafted specially for the royals like you.

Let the Big Show begin!

### HOME AUTOMATION

- HOME AUTOMATION CONTROLLED WITH ALEXA

### TOWER FEATURES

- DESIGNER ENTRANCE LOBBY
- 4 LIFTS OF REPUTED MAKE
- WELL-DESIGNED LIFT LOBBIES ON EACH FLOOR
- SERVANT WASHROOM ON EACH FLOOR
- SEPARATE CAR PARKING TOWER
- FIRE FIGHTING SYSTEM FOR COMMON AREA AS PER NORMS

### SECURITY FEATURES

- VIDEO DOOR PHONE /INTERCOM FOR EACH FLAT
- CCTV CAMERA IN COMMON AREA

### FLOORING

- VITRIFIED FLOORING IN LIVING, BEDROOM & KITCHEN

### KITCHEN

- MODULAR KITCHEN
- GRANITE PLATFORM WITH STAINLESS STEEL SINK

### ELECTRICAL FITTINGS

- A/C, TV AND TELEPHONE POINTS
- SUFFICIENT ELECTRIC POINTS WITH BRANDED MODULAR SWITCHES

### TOILETS

- GRANITE COUNTER BASIN
- BRANDED SANITARY WARE & CP FITTINGS
- HOT & COLD WATER DIVERTOR WITH SHOWER IN COMMON & MASTER TOILET

### WALLS & CEILING

- INTERNAL WALLS WITH GYPSUM FINISH & PLASTIC EMULSION PAINT
- CEILING WITH PLASTIC PAINT
- EXTERNAL WALLS SAND-FACED PLASTER WITH TEXTURE FINISH / ACRYLIC PAINT / EMULSION PAINT

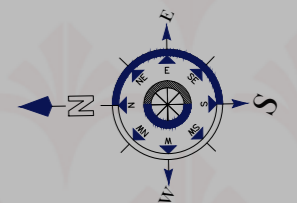
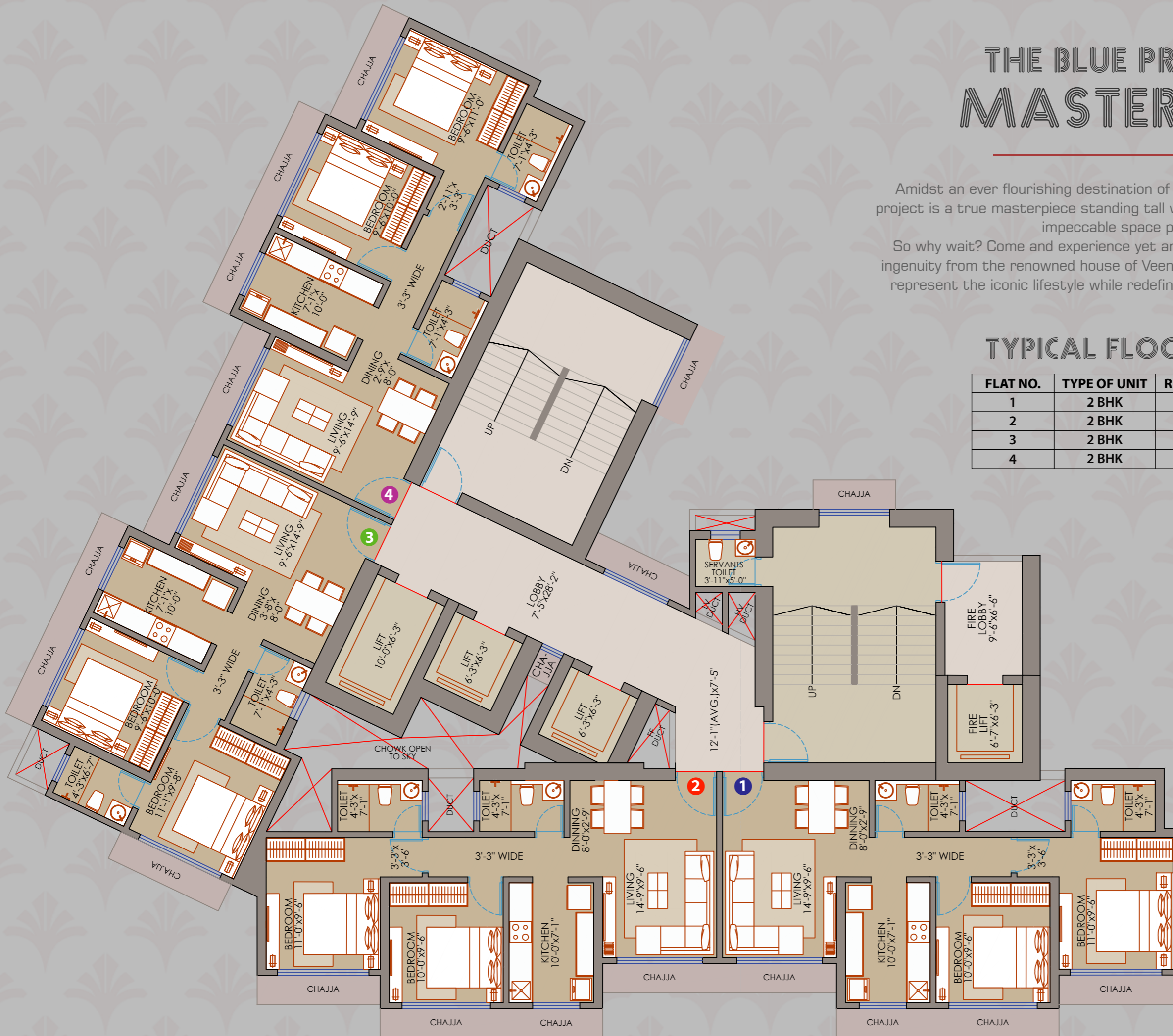
# THE BLUE PRINT OF MASTERPIECE

Amidst an ever flourishing destination of numerous developments, the project is a true masterpiece standing tall with its well thought design and impeccable space planning.

So why wait? Come and experience yet another marvel of architectural ingenuity from the renowned house of Veena Developers which is all set to represent the iconic lifestyle while redefining the heights of modernism.

## TYPICAL FLOOR PLAN

| FLAT NO. | TYPE OF UNIT | RERA CARPET AREA |
|----------|--------------|------------------|
| 1        | 2 BHK        | 588 SQ.FT        |
| 2        | 2 BHK        | 590 SQ.FT        |
| 3        | 2 BHK        | 571 SQ.FT        |
| 4        | 2 BHK        | 586 SQ.FT        |





# GIVE STAR LIFESTYLE TO YOUR FAMILY

---

Your home speaks a lot about you, It represents your choices and preferences. It reflects your character and personality. It is a symbol of your status.

It's a place where moments become memories.

Here is a home, no lesser than an empire of your own. No lesser than your Big Dream you always wanted to realise.





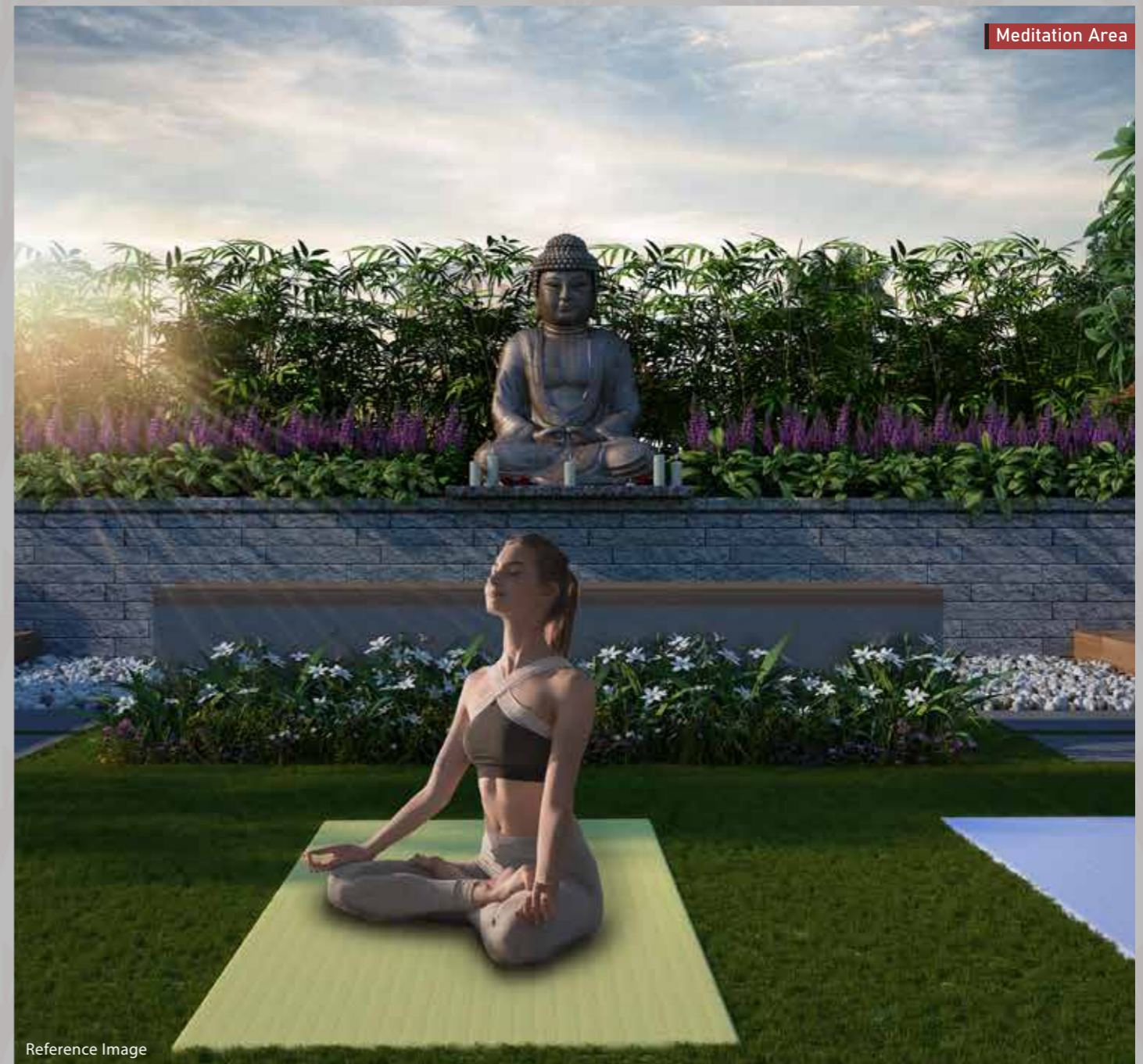
# IN THE MIDST OF A METROPOLIS, FIND A NEW BALANCE

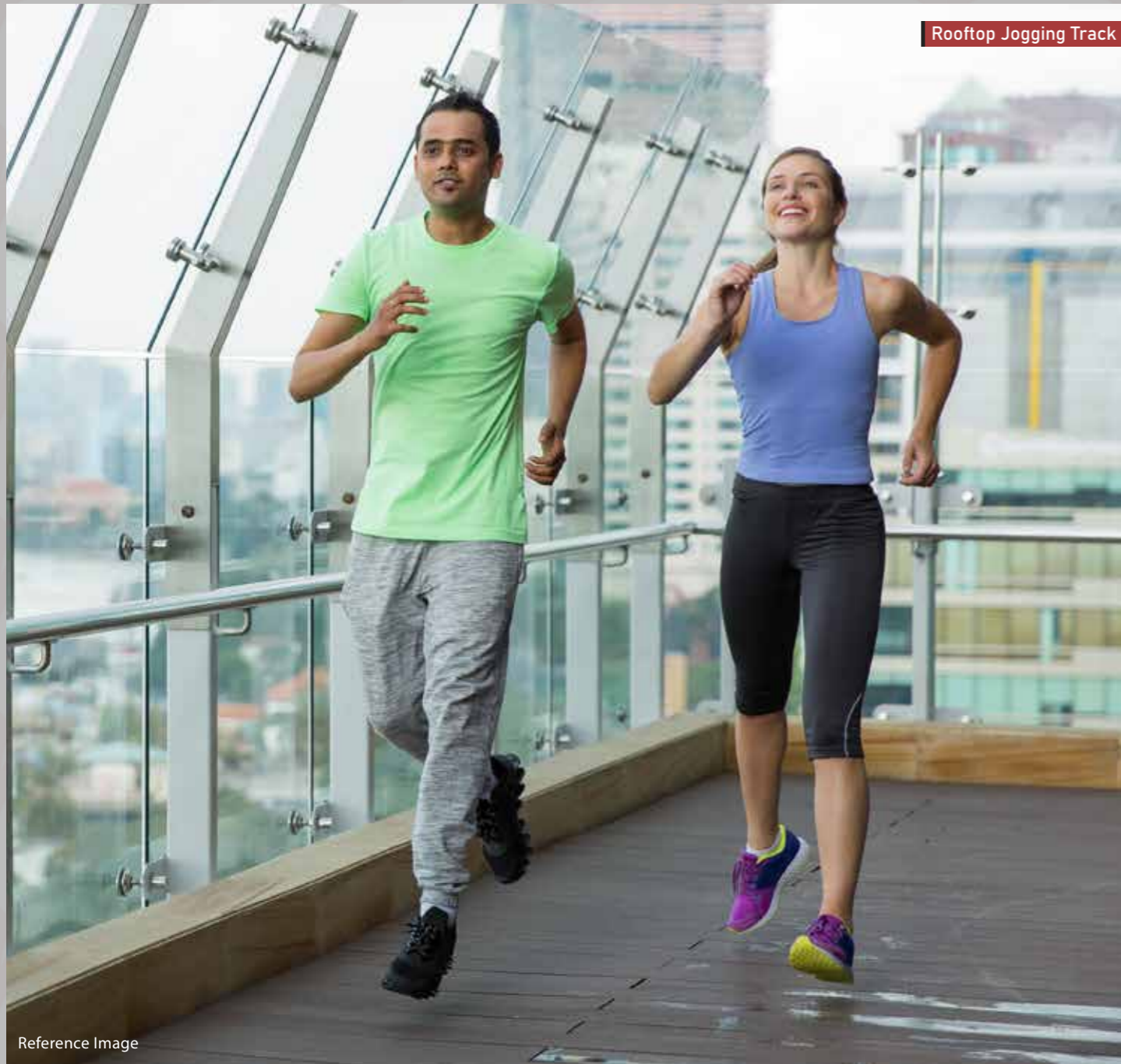
---

## 20+ Recreation & Lifestyle Amenities

Every corner of Passcode Big Show has got something to amaze. From revitalising of health to high class security, from elegant entrance lobby to modern lifestyle provisions, every amenity is thoughtfully designed and set to make your moments of life healthier, safe & happier.

Come here to experience your cherishing time turning into great memories.





Rooftop Jogging Track

Reference Image



Co-Working Area

Reference Image



Multipurpose Activity Area

Reference Image



Rooftop Zen Garden

Reference Image



Banquet Area

Reference Image



# PREMIER CONNECTIVITY & COMFORT AT YOUR DOOR STEP

---

At Passcode Big Show you are conveniently placed with all your social, religious, educational, entertainment, and daily needs being around the corner. You are just a walk away from schools, colleges, markets, theatres, temples, etc.

Living this up close to convenience makes your life smoother and better.



Metro Station

Reference Image



Link Road

Reference Image



Railway Station

Reference Image



### BLOCKBUSTER LOCATION WITH PREMIER CONNECTIVITY

The numerous options of this location offers to the residents, increase it's importance. Passcode Big Show provides an abundance options of connectivity & everything in admirable accessibility.

| RAIL / METRO  | ROAD  | AIRPORT  |
|---|---|--|
| <ul style="list-style-type: none"> <li>Dahanukarwadi : 05 mins</li> <li>Metro Station</li> <li>Kandivali Station : 10 mins</li> <li>Borivali Station : 20 mins</li> </ul> | <ul style="list-style-type: none"> <li>New Link Road : 06 mins</li> <li>SV Road : 10 mins</li> <li>W. E. Highway : 20 mins</li> <li>JVLR : 25 mins</li> </ul> | <ul style="list-style-type: none"> <li>T-2 Terminal : 35 mins</li> <li>Domestic Airport : 30 mins</li> </ul> |

\*Approx Timings

### FUTURE DEVELOPMENT

- Proposed Metro Line Between Charkop-Mankhurd
- Proposed Coastal Road from Kandivali to Nariman Point
- Widening of road from W.E. Highway to Kandivali Station