

A woman with long brown hair, wearing a vibrant red turtleneck top and a matching red blazer, is seated on a black chair. She is looking directly at the camera with a neutral expression. The background is a wall with vertical wood paneling. To her right, there is a decorative arrangement of dried, golden-brown leaves on thin stems, placed on a dark, reflective surface. The overall lighting is warm and focused on the woman.

**WHERE IS THE FINEST
PREMIUM HOMES IN MUMBAI ?**

**WHAT'S THE PERFECT
CONNECT FOR EVERYDAY ?**

**HOW ARE THE ELEMENTS OF
BETTER LIVING CRAFTED ?**

**If you have all these questions, we have all the
answers with an iconic life like no other in Andheri (E).**



ANDHERI'S NEWEST ICON, YOUR ADDRESS OF PRIDE.

Your imagination of supreme luxury living, finest indulgences, perfect connect and finely curated experiences will now all come true at Andheri's newest lifestyle landmark. Open your world to bliss that stays with you for a lifetime. A perfect address that is perfected to suit you.

- Spacious 1, 2 & 3 Bed Residences
- Seamless Ventilation
- Grand Entrance Lobby
- Home Automation with Alexa*
- Ground Floor, Rooftop & Podium Amenities
- Electric Vehicle Charging Facility
- 24x7 Security & Surveillance System



ANDHERI EAST - THE CENTER OF YOUR WORLD.

In a city like Mumbai, staying connected is the biggest luxury you'll ever have. But, we've already taken care of that with an address so prime, the entire world converges to offer you a comfortable and convenient life. Your home, your work, your weekend treats and your peace of mind - It's all connected and at your disposal.

- 
CONNECTIVITY
 W.E.H. - 3 Min
 Metro Station - 4 Min
 Andheri Station - 10 Min
- 
AIRPORTS
 Domestic Airport - 15 Min
 International Airport - 15 Min
- 
FINANCE
 Axis Bank - 2 Min
 Federal Bank - 2 Min
 State Bank of India - 3 Min
 HDFC Bank - 5 Min
- 
EDUCATION
 Tolani College of Commerce - 3 Min
 Swami Vivekanand High School - 5 Min
 Oberoi International School - 12 Min
- 
HOSPITALS
 Shakuntala Hospital - 3 Min
 Holy Spirit Hospital - 4 Min
 Seven Hills Hospital - 15 Min
- 
ENTERTAINMENT
 Carnival Cinemas - 10 Min
 Movie Time - 12 Min
- 
RELIGIOUS
 Sher - E - Punjab Gurudwara - 1 Min
 Hanuman Mandir - 1 Min
 Sacred Heart Church - 3 Min
 Ganesh Temple - 5 Min
 Jain Temple - 8 Min
 Haveli - 8 Min
- 
BUSINESS HUB
 MIDC - 10 Min
 SEEPZ - 15 Min
 Nesco IT Park - 20 Min
 Mind Space - 30 Min
 BKC - 20 Min

**THE LANDMARK OF EXCELLENCE.
A GATEWAY TO ENDLESS POSSIBILITIES.
AN ADDRESS THAT SETS YOU A CLASS APART.**

WHEN DAILY ABUNDANCE BECOMES PART OF LIFE,
A promise of brilliant living takes its course strategically planned and designed world-class privileges at three levels, rooftop, podium, and ground level for well-defined experiences.





ENTRANCE COURTYARD

Artistic Impression



GRAND ENTRANCE LOBBY

Artistic Impression



KID'S PLAY AREA

Artistic Impression



Artistic Impression

WELL-EQUIPPED GYM



Artistic Impression

PODIUM LEVEL GARDEN AND ELEVATED JUICE BAR



INDOOR GAMES ROOM

Artistic Impression



ROOFTOP LEVEL BOX CRICKET

Reference Image



SWINGS FOR ADULTS AT ROOFTOP

Reference Image



ROOFTOP SKATING RINK

Reference Image



ROOFTOP JOGGING TRACK

Reference Image



ROOFTOP FITNESS LAWN

Reference Image

ELEMENTS OF BLISS THAT ADD TO YOUR HAPPINESS

GROUND FLOOR AMENITIES

- Blissful Landscaping
- Kid's Play Area
- Toddler's Area
- Seating Corner
- Security Cabin

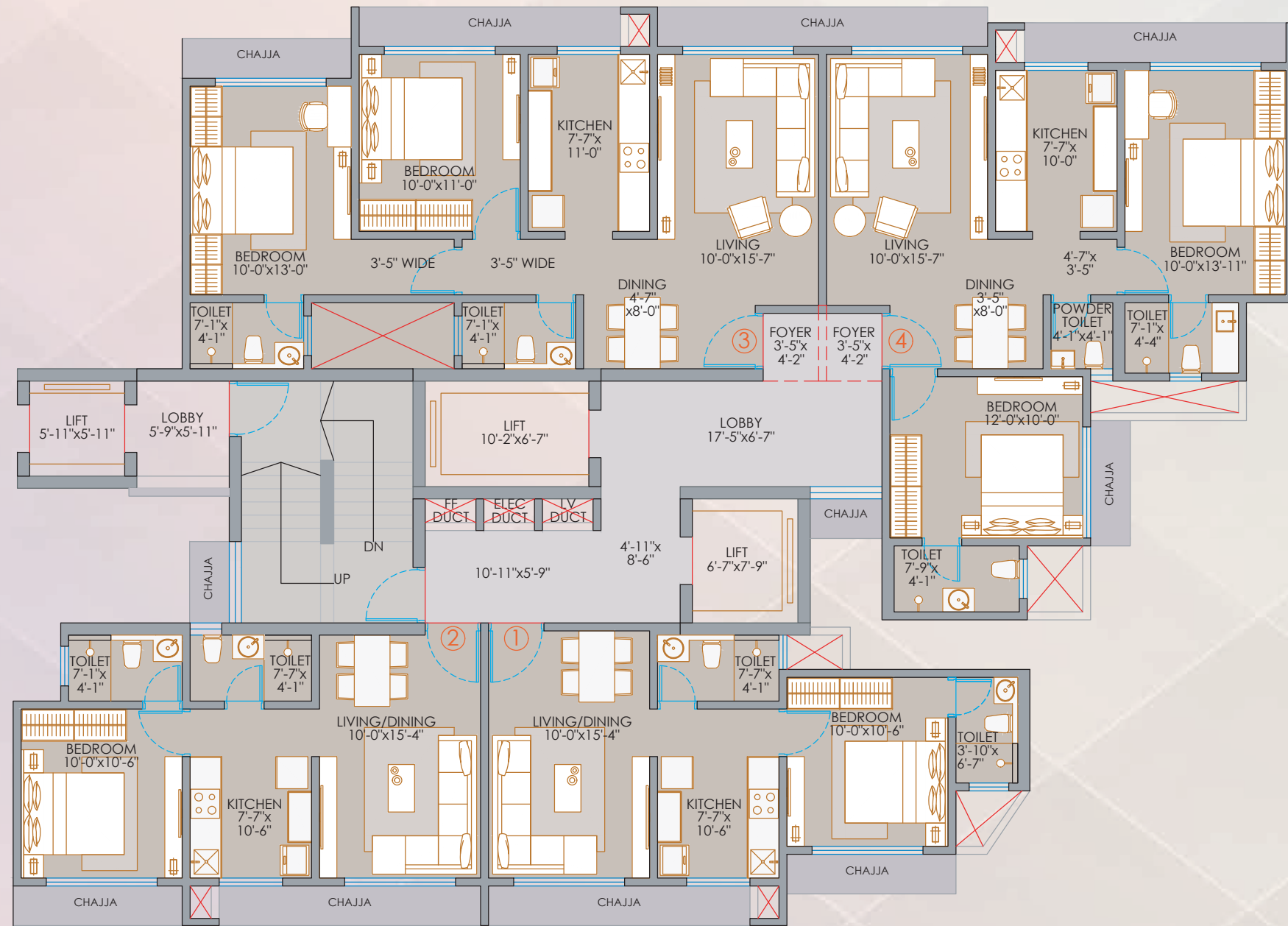
PODIUM LEVEL AMENITIES

- Landscaped Garden
- Fountain
- Amphitheatre
- Modern Sculpture
- Yoga & Meditation Deck
- Senior Citizen's Sit-out
- Acupressure Pathway
- Chit-chat Corner
- Reflexology Path
- Multipurpose Lawn
- Elevated Juice Bar
- Barbeque Deck
- Open Dining & Lounge
- Swings for Adults
- Featured Wall Painting

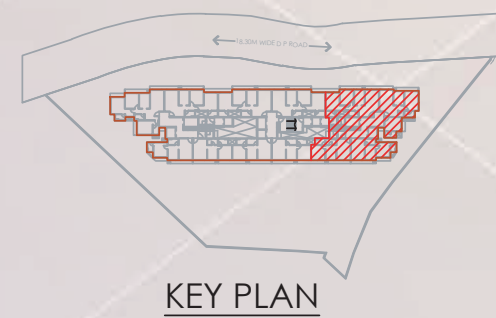
ROOFTOP LEVEL AMENITIES

- Seating Area
- Garden Swings
- Box Cricket Area
- Basketball Hoop
- Fitness Lawn
- Jogging Track
- Ludo Board & Hopscotch
- Skating Rink
- Place for Solar Panel
- Preportion Deck
- Lounge
- Chit - Chat Corner
- Yoga Deck

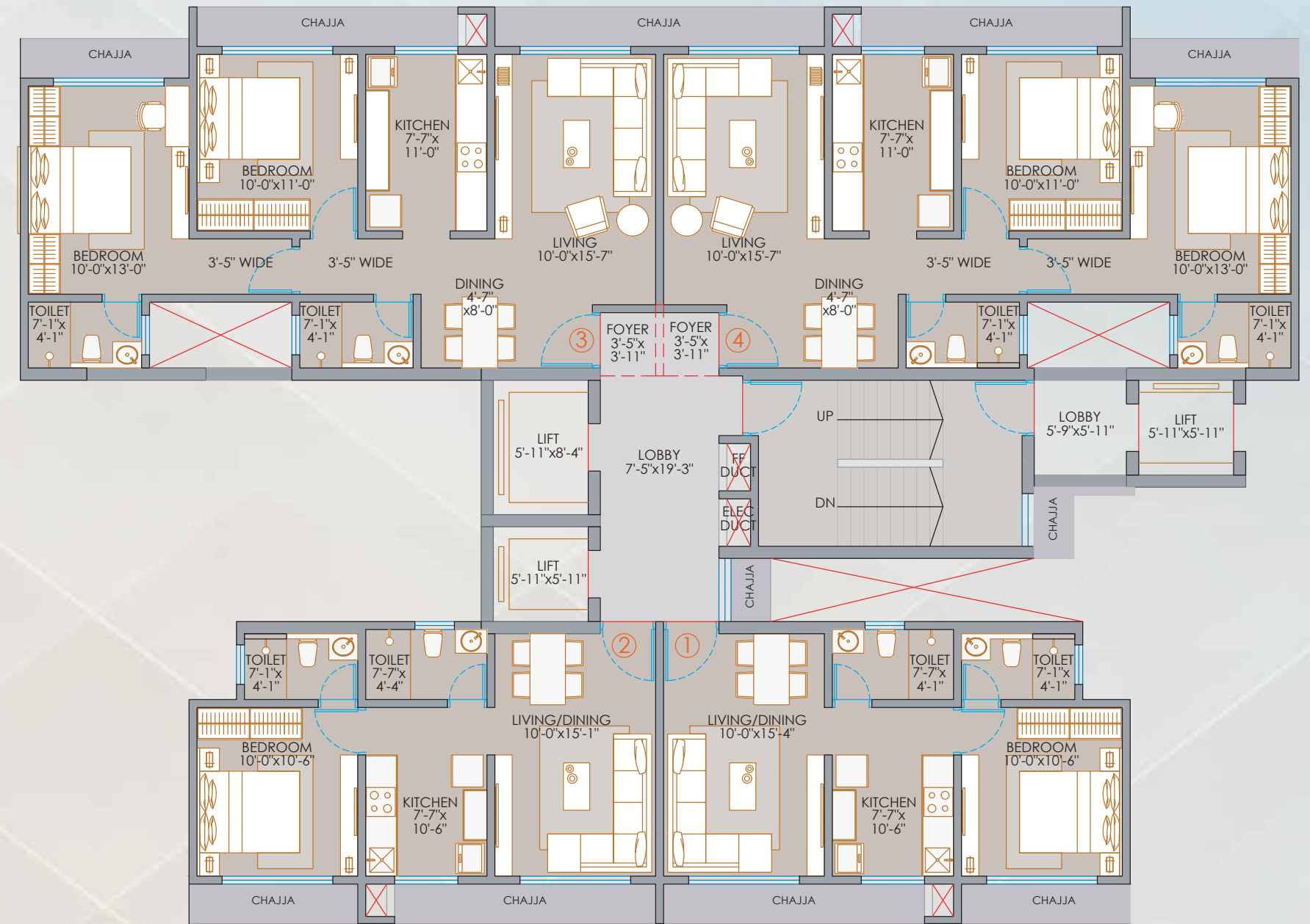
Typical Floor Plan: Wing A



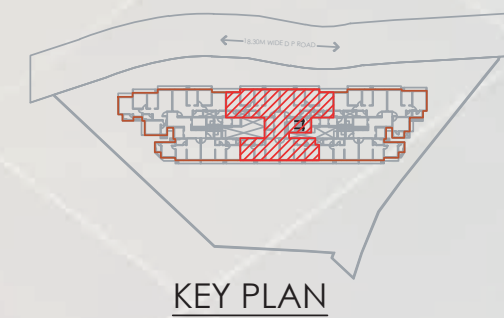
FLAT NO.	RERA CARPET AREA
1	415 Sq.Ft.
2	424 Sq.Ft.
3	699 Sq.Ft.
4	691 Sq.Ft.



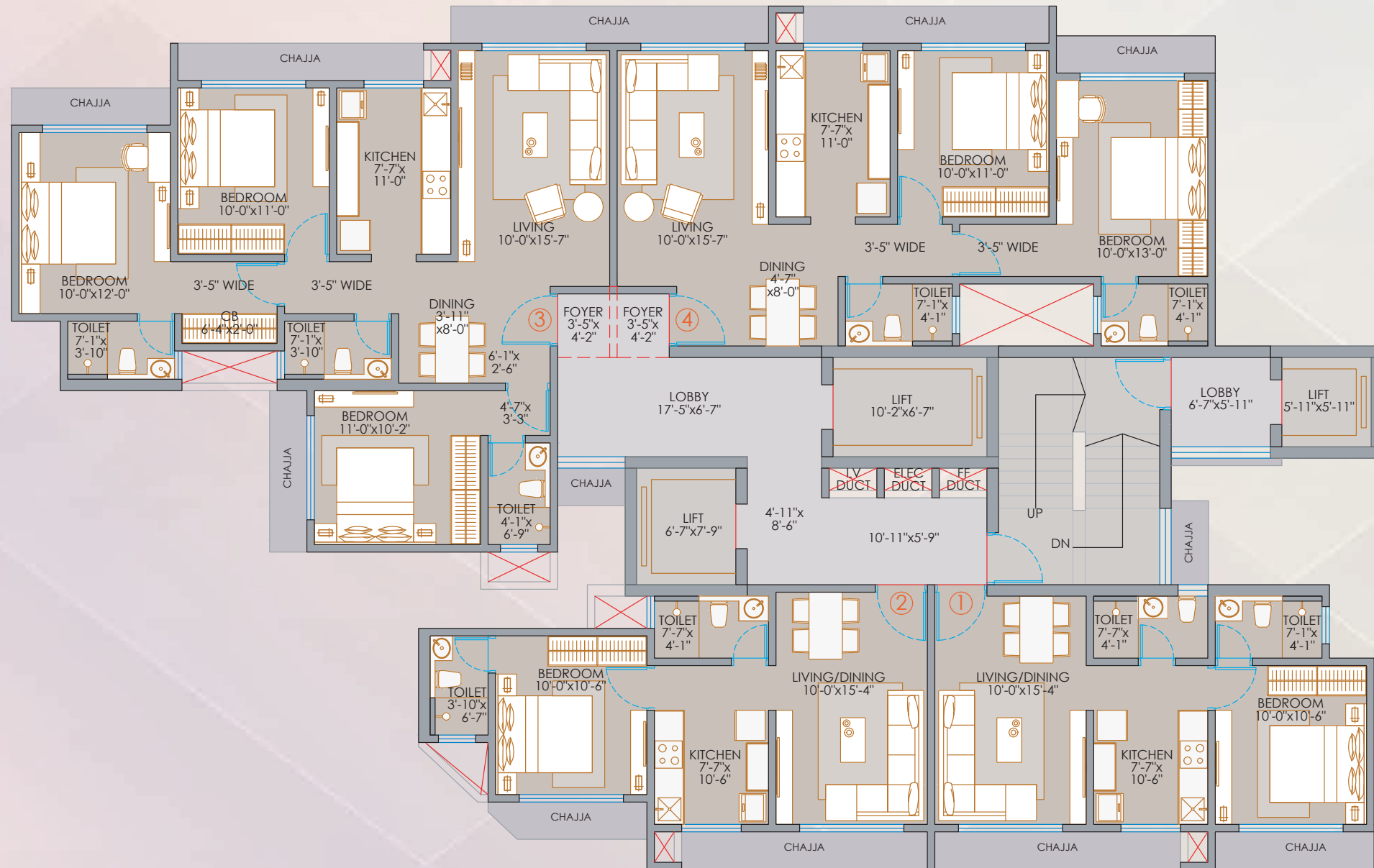
Typical Floor Plan: Wing B



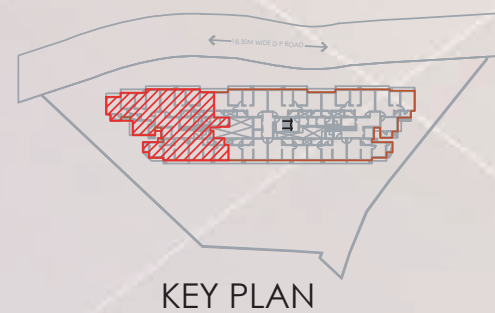
FLAT NO.	RERA CARPET AREA
1	424 Sq.Ft.
2	424 Sq.Ft.
3	698 Sq.Ft.
4	698 Sq.Ft.



Typical Floor Plan: Wing C



FLAT NO.	RERA CARPET AREA
1	424 Sq.Ft.
2	415 Sq.Ft.
3	879 Sq.Ft.
4	699 Sq.Ft.



KEY PLAN



LIST OF SPECIFICATIONS

ENTRANCE FOYER

- Grand lobby with Italian marble/ Designer tiles
- Fully Air-conditioned lobby
- Reception/help desk with security

ELEVATORS / TYPICAL FLOOR LOBBY

- Ventilated floor lobby
- Dedicated high-quality elevator with service lifts
- Designer elevator cabin interior

LIVING ROOM AND BEDROOM

- Spacious Room Size
- Adequate spaces for Family Time
- Rooms are designed as per proper furniture planning and circulation.

KITCHEN

- Well Ventilated Kitchen
- Sufficient Spaces allocated for all Kitchen Appliances.

TOILETS

- Hot & cold water diverter with shower in common toilets
- Hot & cold water diverter with shower in master toilet
- Premium Sanitary Fixtures.

DOORS

- Wooden door frames
- Hot-pressed solid core flush doors with a laminate finish
- Designer hardware fittings

WINDOWS

- Coloured powder coated /anodized aluminium sliding windows with glass
- Granite/marble window sills

COMPOUND WALL & ENTRANCE GATE

- Designed compound wall as per architectural design
- Attractive entrance gate as well as a covered security cabin

PARKING & INTERNAL ROADS

- Driver and security toilets Provision on the ground floor
- Cement concrete or paved block/checker tiles
- Electric Charging for EV Vehicles.
- Surface & Mechanical Parking systems.

SECURITY SYSTEM & FEATURES

- 24 x 7 security within the campus.
- Intercom facilities.
- CCTV cameras in parking area & at common facilities.
- Video door phone system for each flat.

FLOORING

- Vitrified flooring in the living, dining, bedroom, and kitchen
- ### WALLS & CEILING
- Internal walls with gypsum finish and Lustre/Royal paint
 - Ceiling with gypsum finish and plastic paint
 - External walls sand-faced plaster with a textured finish and acrylic paint

ELECTRICAL FITTINGS

- Sufficient electric points with branded modular switches
- Concealed fire-resistant copper wiring
- Ac, TV, and telephone/internet points provision
- Earth leakage circuit breaker

TOWER FEATURE

- Earthquake-resistant RCC framed structure
- Firefighting systems for common area as per norms



ABOUT US

Veena Developers have been pioneering the league of providing housing and corporate spaces by offering world-class amenities to customers. Be it building highrise luxury housing spaces or building corporate spaces, we put our heart and soul into the development of the project and make sure that it surpasses the expectations of our customers. Our projects are at strategic locations and offer finest advantages of living in a connected world.

32+	5300+	4.75+	06	3700+	2.6+
Projects Delivered	Happy Customers	Millions Sq.Ft. Delivered	Projects Under Construction	To Be Happy Customers	Million Sq.Ft. Under Construction

ONGOING PROJECTS

VEENA SMART HOMES
Kandivali (W)
2 BHK Apartments



MahaRERA No: P51800029400 | P51800032966 | P51800031045
TOTAL AREA: 6,12,556 Sq.Ft.

VEENA SOLACE
Santacruz (W)
2 & 3 BHK Apartments



MahaRERA No: P51800030138
TOTAL AREA: 1,08,113 Sq.Ft.

9, BUSINESS BAY
Malad (W)
Boutique offices



MahaRERA No: P51800032829
TOTAL AREA: 3,48,148 Sq.Ft.

VEENA SENTERIO
Chembur
1 BHK Apartments



MahaRERA No: P51800024452
TOTAL AREA: 1,78,413

VEENA SERENE
Chembur
2 BHK Apartments



MahaRERA No: P51800027781
TOTAL AREA: 1,03,408 Sq.Ft.

VEENA SAMRAJYA
Palghar
1 RK & 1 BHK Apartments



MahaRERA No: P99000021726
TOTAL AREA: 7,65,408 Sq.Ft.

