




CHANDAK  
**GREENAIRY**  
BORIVALI, WEH

—  —

**WHERE  
THE BEST THINGS  
OF LIFE  
“COME TOGETHER”**

—  —

**Launching Residential Tower**  
— 1 & 2 BHKs with Jodi Options —

WHERE  
ALL FACETS OF  
A PERFECT HOME  
'COME TOGETHER'



STRATEGICALLY LOCATED  
NEXT TO WEH & S. G. NATIONAL PARK

A LIFESTYLE UPGRADE  
AMENITIES AT MULTIPLE LEVELS

CONNECTED SEAMLESSLY  
TO KEY UPCOMING CITY INFRA

ALL INCLUSIVE YET EXCLUSIVE  
RESIDENTIAL, COMMERCIAL & RETAIL

A LEGACY & A PROMISE  
RECORD OF QUALITY & DELIVERY

OPTIMALLY DESIGNED  
FOR VIEWS & VENTILATION

FUTURE CONNECTED  
PROXIMITY TO METRO GRID

BEST-IN-CLASS RESIDENCES  
WITH STRIKING ELEVATION



A PLACE WHERE  
EXPANSE & FRESHNESS  
'COME TOGETHER'



Introducing a place in the heart of the city where the greens of Sanjay Gandhi National Park and the gentle breeze of the Arabian Sea come together to give you a lifestyle that many yearn. Inspired by the vitality of being surrounded in pristine natural environs Chandak GreenAiry is a pristine paradise that brings together the best that nature has to offer. A life that ushers you in a rarefied state everyday, without having to leave the bustling city life behind.

# INFINITE LUXURIES & MANY AVENUES 'COME TOGETHER'



Located at Borivali in the nexus of a cosmopolitan address on the WEH, Chandak GreenAiry offers a heavenly retreat which has been thoughtfully designed to offer you the best of modern architecture and nature's bounty.

An exclusive invitation to this new-age, integrated lifestyle that fuses an unique triad of premium 1& 2 BHKs with jodi options, smart commercial spaces and dynamic retail enclaves all at one iconic address.

Chandak GreenAiry truly offers a gateway to the concept of Live-Work-Play in an exclusive green eco-system.





# WHERE HABITAT & URBANISATION 'COME TOGETHER'



A well-planned precinct with a timeless glory, Borivali is where you have seen life transforming just around you. While being known as 'The Suburb of Gardens', Borivali is a quaint city marked by endless greenery of the spectacular Sanjay Gandhi National Park and the one that has a diverse & inclusive neighbourhood with rapidly developing infrastructure, highways, malls, hospitals, entertainment avenues and corporate hubs. And with the epicentre of action moving in the north direction, this would only be the choice of those who can see beyond the horizon.

Here is a chance to be a part of the life where the fast future and the calm greens of present come together.

# WHERE PROXIMITY & CONVENIENCE 'COME TOGETHER'

## EASY ACCESSIBILITY

- On Western Express Highway
- Magathane Metro Station - 0.10km
- Borivali Railway Station - 3.2km

## EDUCATIONAL INSTITUTIONS

- Childrens Academy School - 1.5km
- Chatrabhuj Narsee School - 1.7km
- Cambridge School - 1.7km
- Oxford International School - 2.3km
- JBCN International School - 4.8km
- Singapore International School - 5.7km

## HOSPITALS

- Surbhi Life Care Hospital - 1.2km
- Lifeline Medicare Hospital - 1.6km
- Apex Multispeciality Hospital - 1.8km
- Seven Star Multispeciality Hospital - 2.7km
- Sanchaiti Super Specialty Hospital - 3km

## ENTERTAINMENT & RECREATIONS

- Carnival Cinemas - 0.75km
- INOX - 1.6km
- Evershine Dream Park - 1.6km
- Thakur Mall - 1.8km
- Growels Mall - 3km
- PVR - 3.1km
- Raghuleela Mall - 3.9km

## COMMERCIAL HUBS

- Western Edge - 0.45km
- Gundecha Solitaire - 0.7km
- Agora Business Plaza - 1.7km
- Mahindra & Mahindra - 1.9km
- Wadhwa Technopark - 4.6km



# WHERE ABSOLUTE NETWORK & ACCESSIBILITY 'COME TOGETHER'



Where the best infrastructural initiatives in the city are coming together to connect you to the rest of the city.



METRO LINE



CABLE CAR



UNDERGROUND TUNNEL TO THANE



COASTAL ROAD KANDIVALI TO PRINCESS STREET FLYOVER

## METRO CONNECTIVITY

CONNECTIVITY TO THANE Dahisar - Gaimukh
CONNECTIVITY TO SOB O Airport - Cuffe Parade
CONNECTIVITY TO POWAI JVL R - Powai
CONNECTIVITY TO WESTERN SUBURBS Direct To Andheri
CONNECTIVITY TO NAVI MUMBAI Dahisar - Mankhurd



Map Not To Scale

\*Source - TOI & Google Maps  
Subject to approvals from competent authority



# WHERE THE BEST OF ARCHITECTURE & NATURE 'COME TOGETHER'



Chandak GreenAiry is meticulously designed and is poised to be a unique structural marvel, keeping design and sustainability at the core of everything. This blended with the convenience of retail & commercial concept will offer you your own exclusive space within city.





WHERE  
WORK, PLAY & LIFE  
'COME TOGETHER'



Chandak GreenAiry is planned to be the ultimate "Integrated Lifestyle" abundant with nature's bounty & the finest lifestyle amenities. Imagine living in a one-of-its-kind address that hosts premium residential spaces, commercial offices and retail paradise, bringing the complete world right to your doorstep. This rare living experience comes with lush exotic views and a plethora of recreational choices.

# WHERE HEALTH & LEISURE 'COME TOGETHER'



## NATURAL AMENITIES



Sun



Freshness



Space



Breeze

Recreational facilities at Chandak GreenAiry have one simple purpose to enrich your social life and breathe fun. With naturally themed podium gardens & amenities, this elegantly designed integrated community is decked with rejuvenation and wellness activities to indulge in, all day round.

## WORLD-CLASS AMENITIES

21,000+ Sq.ft  
Podium

Plethora of  
Rooftop Amenities

Naturally Themed  
Podium Gardens

WHERE

COMMUNITY,  
COMFORT & CALM  
PROJECT HIGHLIGHTS  
'COME TOGETHER'



PREMIUM 1 & 2 BHKs  
WITH JODI OPTIONS



PANORAMIC VIEWS  
OF NATIONAL  
PARK & CITY



NATURALLY THEMED  
PODIUM GARDENS



LIVELY RETAIL  
SPACES



LIFESTYLE  
AMENITIES



TWO EXCLUSIVE  
TOWERS



INTEGRATED  
LIFESTYLE



EFFICIENTLY  
DESIGNED HOMES



WELL VENTILATED  
& LIT HOMES



STATE-OF-THE-ART  
ROOFTOP &  
PODIUM AMENITIES



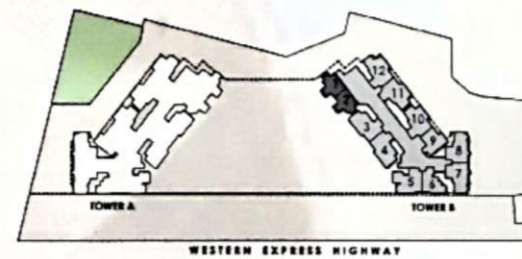
SMART  
COMMERCIAL  
SPACES



RESIDENTIAL HABITABLE  
FLOOR STARTING FROM  
12<sup>TH</sup> FLOOR

## TYPICAL FLOOR PLAN

### TOWER B

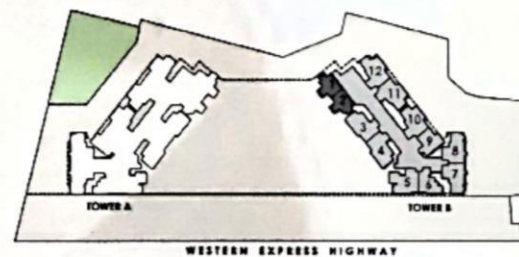
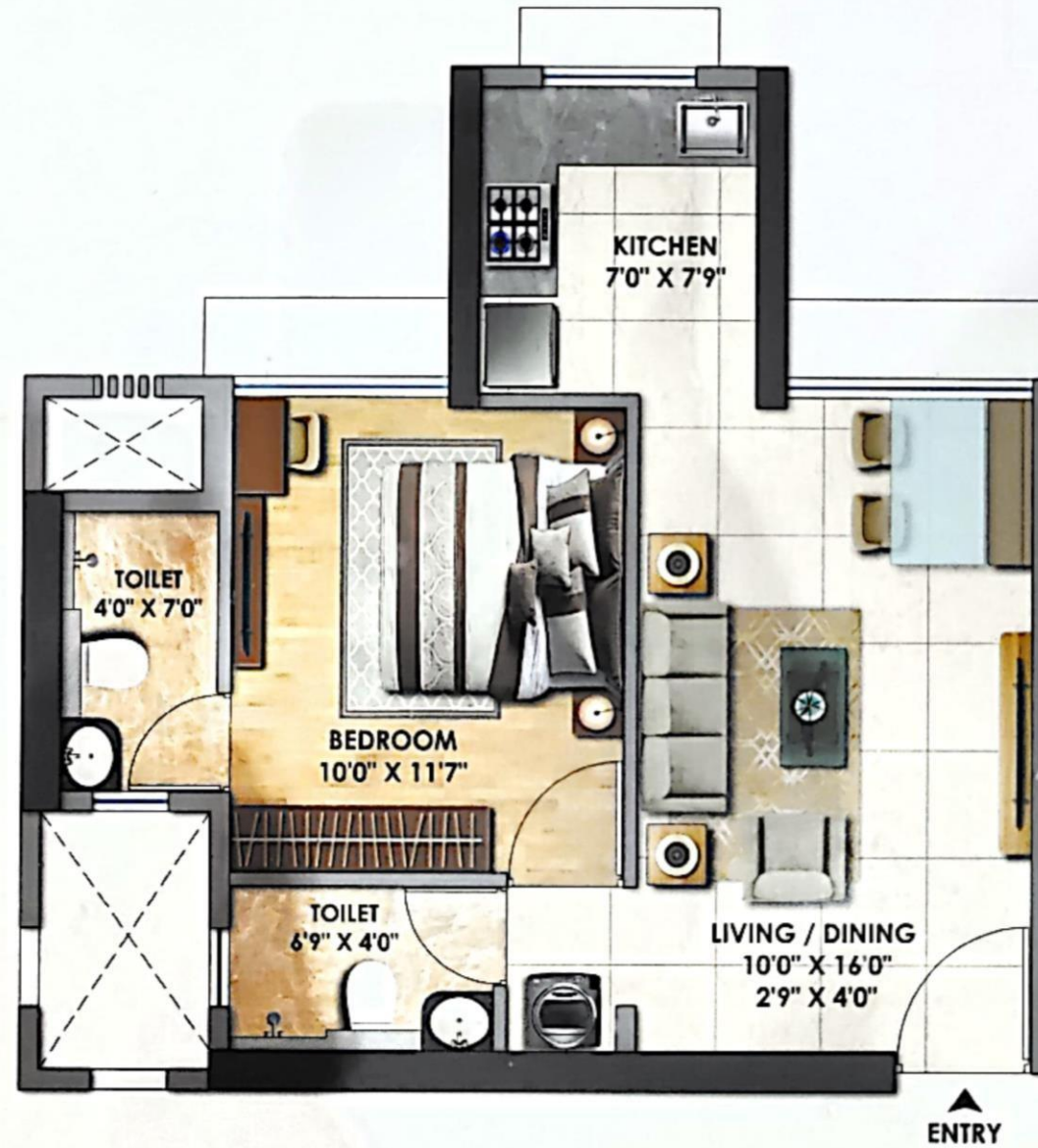


PLAN NOT TO SCALE

MahaRERA Registration No: P51800035093 Available on: <https://maharera.mahaonline.gov.in>

Disclaimer: The Furniture, Fixtures, Interior Work, Design options and Fittings as displayed in this communication are for showcasing purpose only and do not form part of standard amenities to be provided in the Flat/premises. The Flat/premises offered for Sale are unfurnished and the registered Agreement for Sale between the Promoter and the purchaser alone will be final and binding. The areas & dimensions shown herein are subject to a variation of +/- 3%. Promoter reserves its right to upgrade, modify, relocate, enhance, make changes, delete or alter the common amenities, refuge floor & floor height of the building and for any features or as may be required as per approvals & permission granted by the concerned authorities from time to time. Joint development with Surya Builders and Developers.

**1 BHK**  
**418 SQ.FT.**

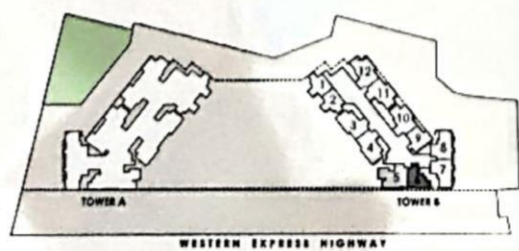
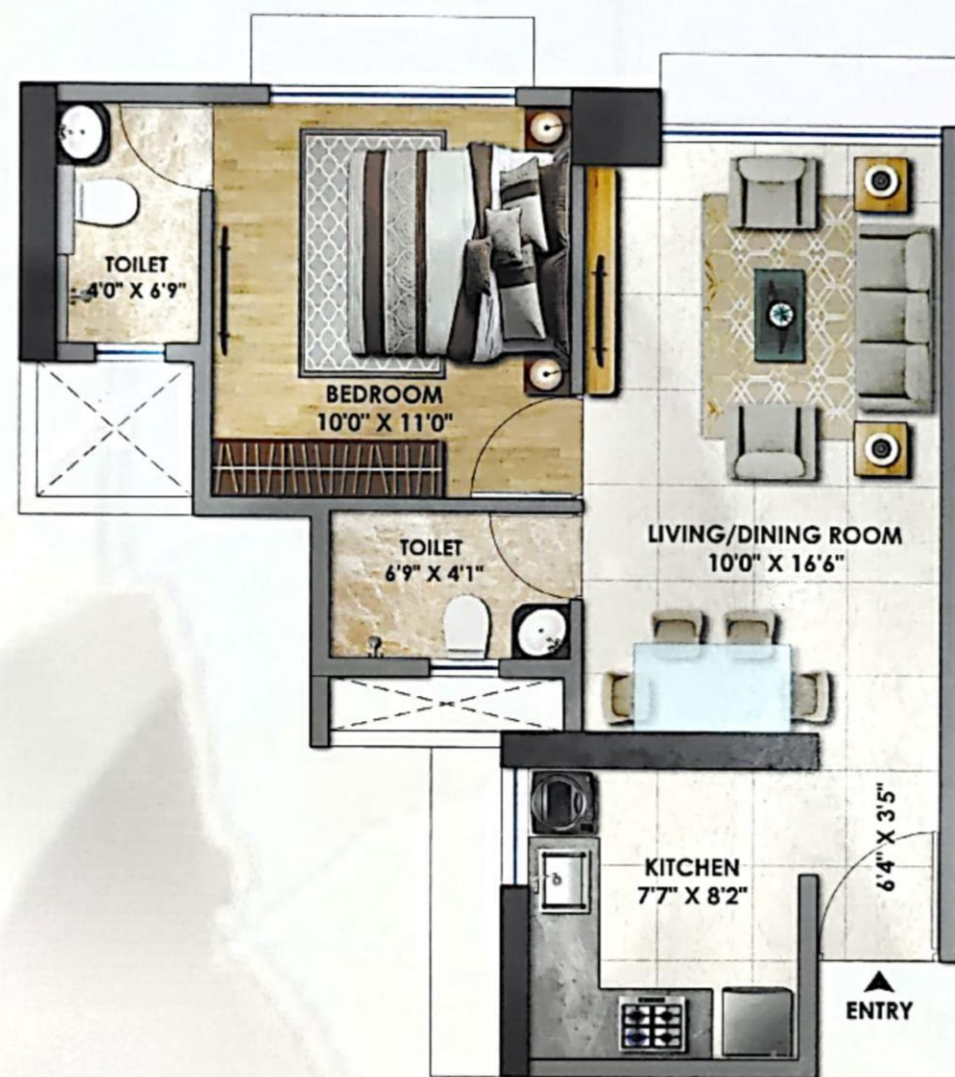


PLAN NOT TO SCALE

MahaRERA Registration No: P51800035093 Available on: <https://maharera.mahaonline.gov.in>

Disclaimer: The Furniture, Fixtures, Interior Work, Design options and Fittings as displayed in this communication are for showcasing purpose only and do not form part of standard amenities to be provided in the Flat/Reserves. The Flat/Reserves offered for Sale are unfurnished and the registered Agreement for Sale between the Promoter and the purchaser alone will be final and binding. The areas & dimensions shown herein are subject to a variation of +/- 3%. Promoter reserves its right to upgrade, modify, relocate, enhance, make changes, delete or alter the common amenities, refuge floor &/or height of the building and for any features or as may be required as per approvals & permission granted by the concerned authorities from time to time. Joint development with Surya Builders and Developers.

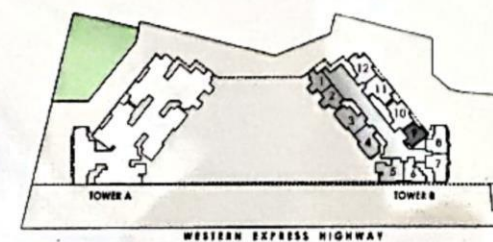
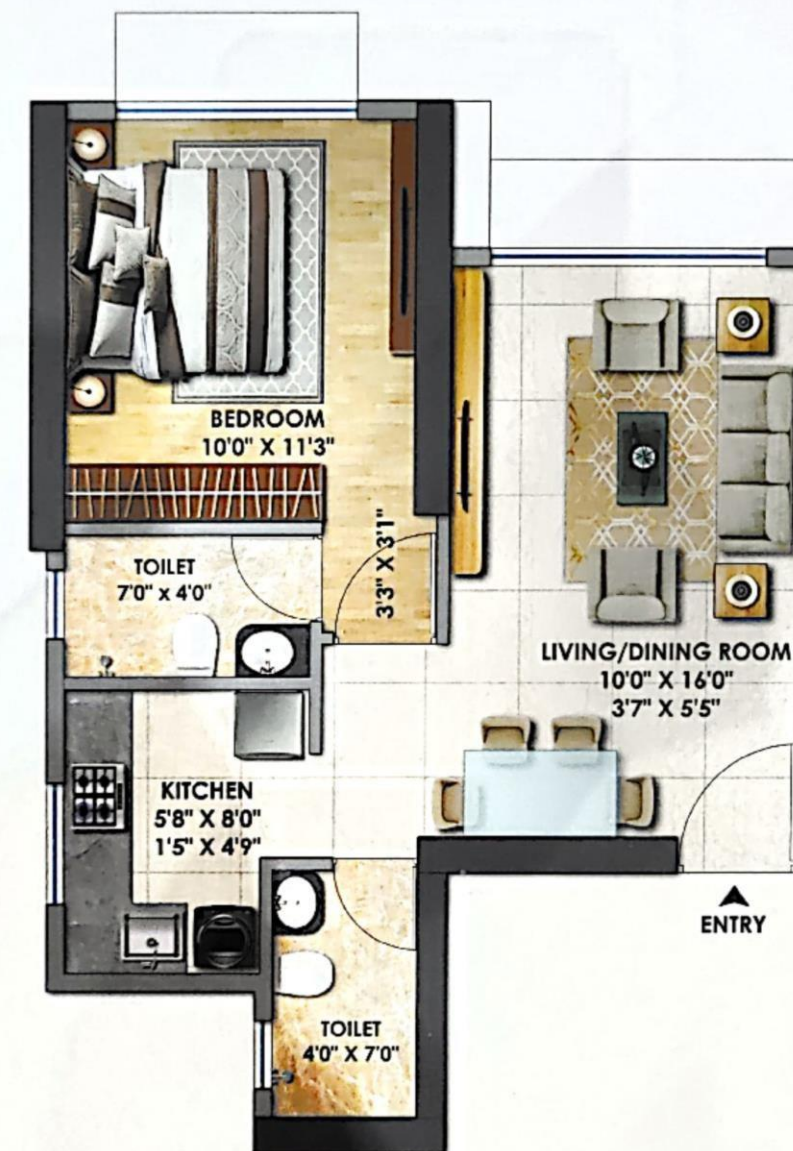
**1 BHK**  
**430 SQ.FT.**



MahaRERA Registration No: P51800035093 Available on: <https://maharera.mahaonline.gov.in>

Disclaimer: The Furniture, Fixtures, Interior Work, Design options and Fittings as displayed in this communication are for showcasing purpose only and do not form part of standard amenities to be provided in the Flat/Premises. The Flat/Premises offered for Sale are unfurnished and the registered Agreement for Sale between the Promoter and the purchaser alone will be final and binding. The areas & dimensions shown herein are subject to a variation of +/- 3%. Promoter reserves its right to upgrade, modify, relocate, enhance, make changes, delete or alter the common amenities, refuge floor & floor height of the building and for any features or as may be required as per approvals & permission granted by the concerned authorities from time to time. Joint development with Surya Builders and Developers.

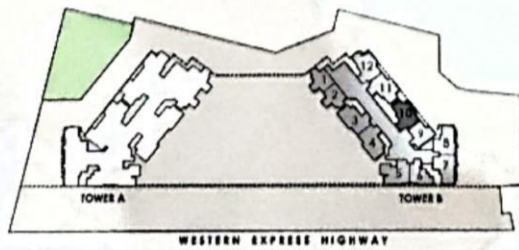
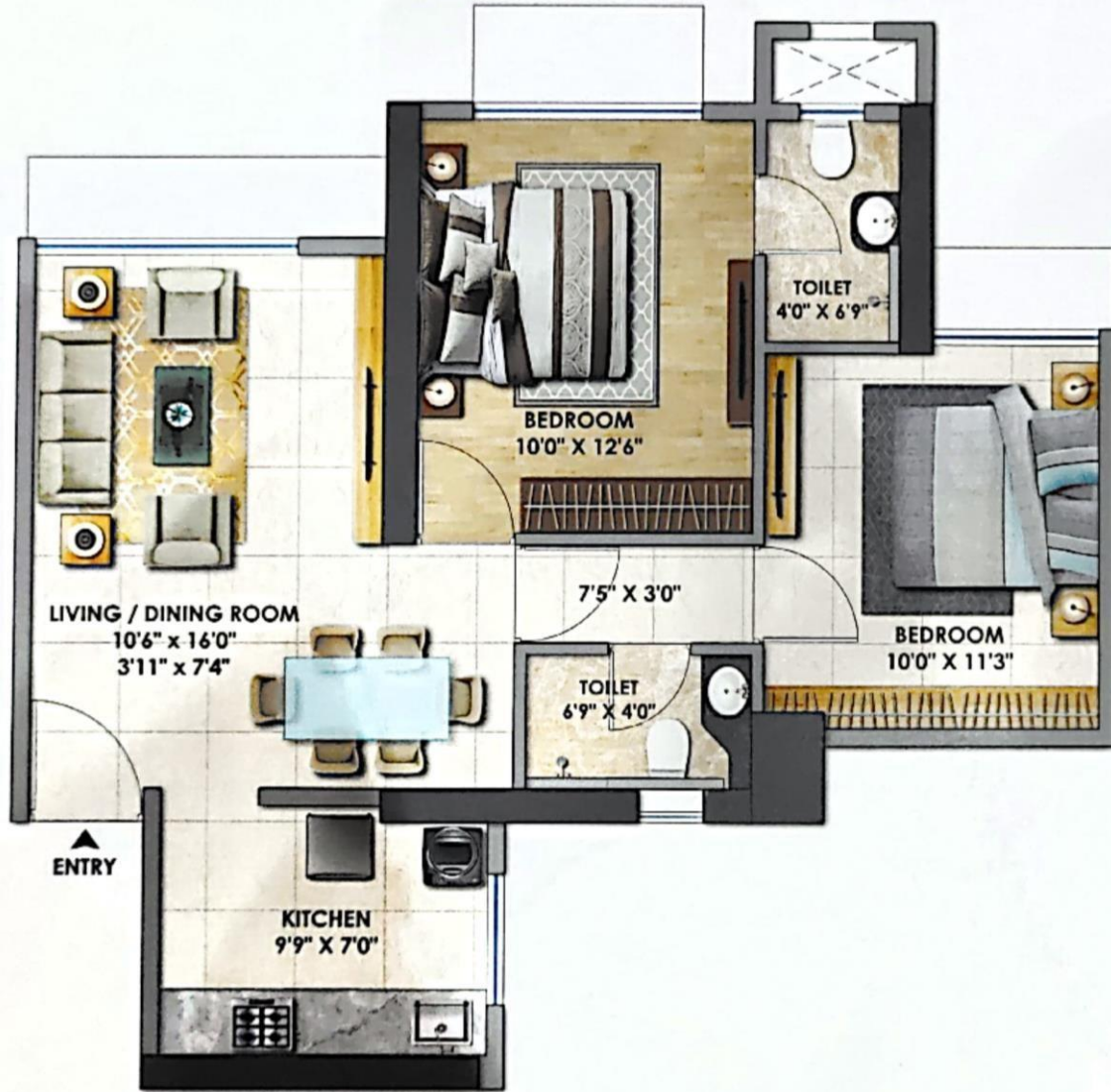
**1 BHK**  
**435 SQ.FT.**



MahaRERA Registration No: P51800035093 Available on: <https://maharera.mahaonline.gov.in>

Disclaimer: The Furniture, Fixtures, Interior Work, Design options and Fittings as displayed in this communication are for showcasing purpose only and do not form part of standard amenities to be provided in the Flat/Premises. The Flat/Premises offered for Sale are unfurnished and the registered Agreement for Sale between the Promoter and the purchaser alone will be final and binding. The areas & dimensions shown herein are subject to a variation of +/- 3%. Promoter reserves its right to upgrade, modify, relocate, enhance, make changes, delete or alter the common amenities, refuge floor & floor height of the building and for any features or as may be required as per approvals & permission granted by the concerned authorities from time to time. Joint development with Surya Builders and Developers.

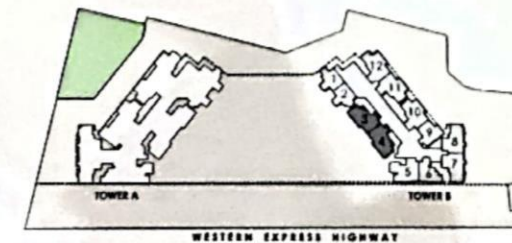
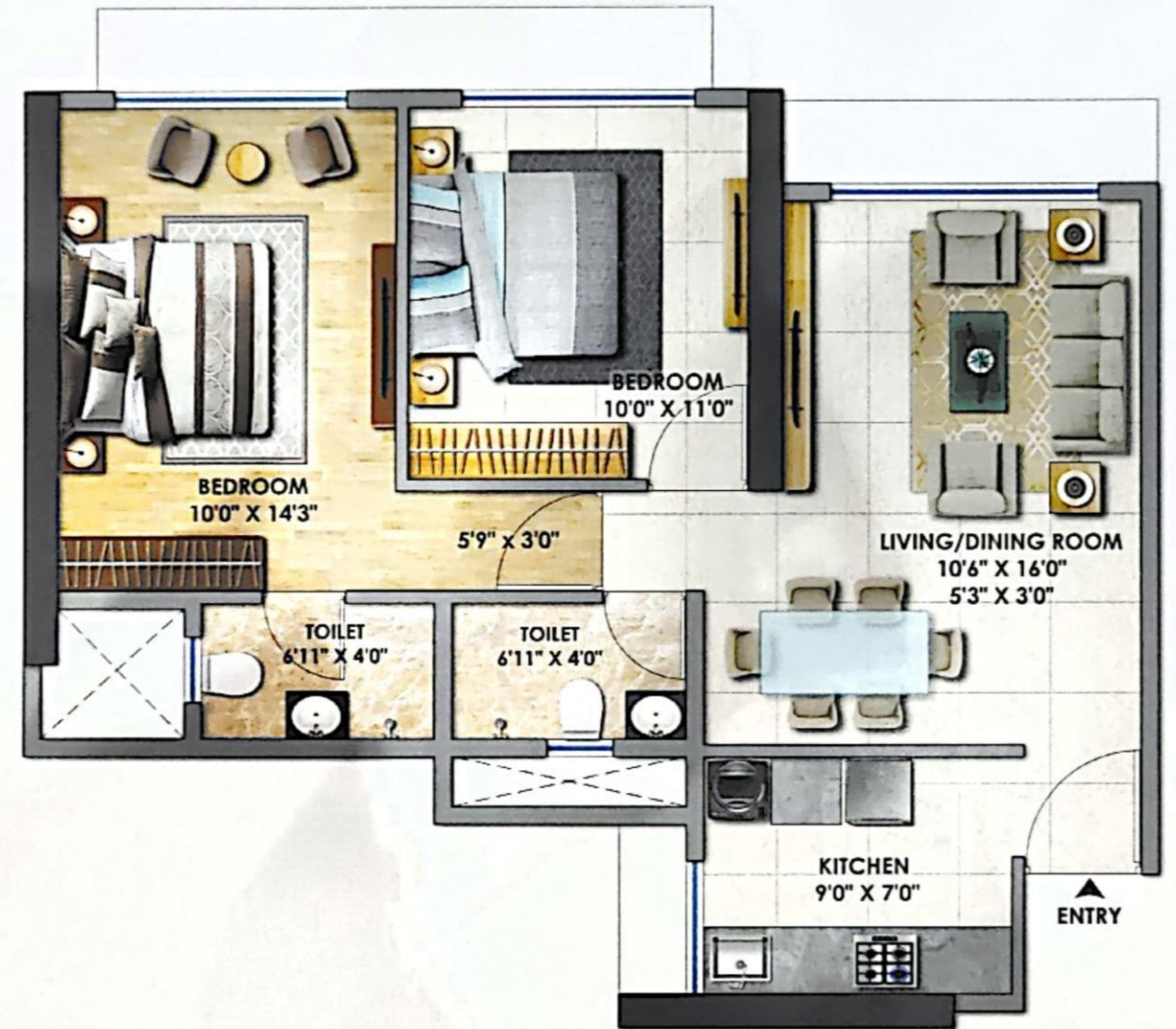
**2 BHK**  
**618 SQ.FT.**



MahaRERA Registration No: P51800035093 Available on: <https://maharera.mahaonline.gov.in>

Disclaimer: The Furniture, Fixtures, Interior Work, Design options and Fittings as displayed in this communication are for showcasing purpose only and do not form part of standard amenities to be provided in the Flat/Premises. The Flat/Premises offered for Sale are unfurnished and the registered Agreement for Sale between the Promoter and the purchaser alone will be final and binding. The areas & dimensions shown herein are subject to a variation of +/- 3%. Promoter reserves its right to upgrade, modify, relocate, enhance, make changes, delete or alter the common amenities, refuge floor &/or height of the building and for any features or as may be required as per approvals & permission granted by the concerned authorities from time to time. Joint development with Surya Builders and Developers.

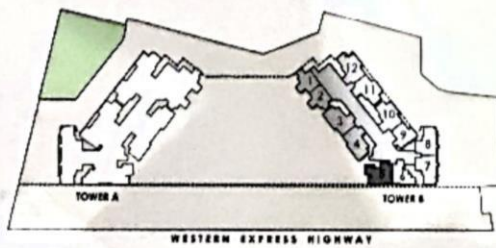
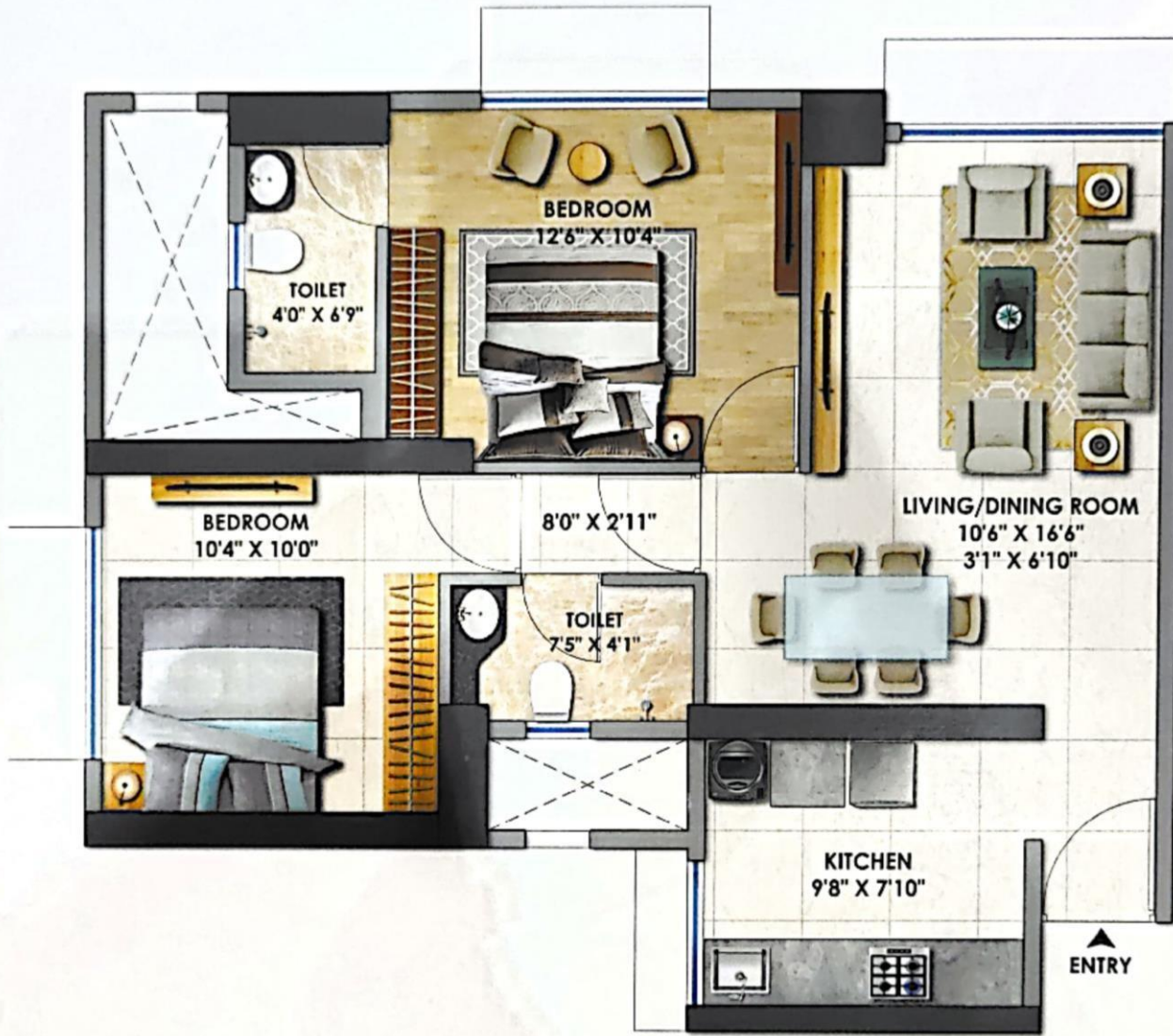
**2 BHK**  
**624 SQ.FT.**



MahaRERA Registration No: P51800035093 Available on: <https://maharera.mahaonline.gov.in>

Disclaimer: The Furniture, Fixtures, Interior Work, Design options and Fittings as displayed in this communication are for showcasing purpose only and do not form part of standard amenities to be provided in the Flat/Premises. The Flat/Premises offered for Sale are unfurnished and the registered Agreement for Sale between the Promoter and the purchaser alone will be final and binding. The areas & dimensions shown herein are subject to a variation of +/- 3%. Promoter reserves its right to upgrade, modify, relocate, enhance, make changes, delete or alter the common amenities, refuge floor &/or height of the building and for any features or as may be required as per approvals & permission granted by the concerned authorities from time to time. Joint development with Surya Builders and Developers.

**2 BHK**  
**632 SQ.FT.**

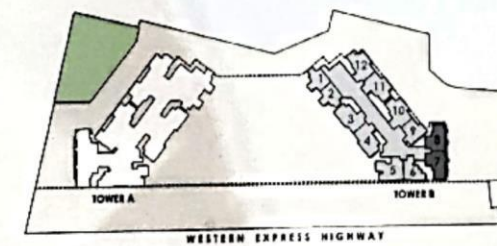
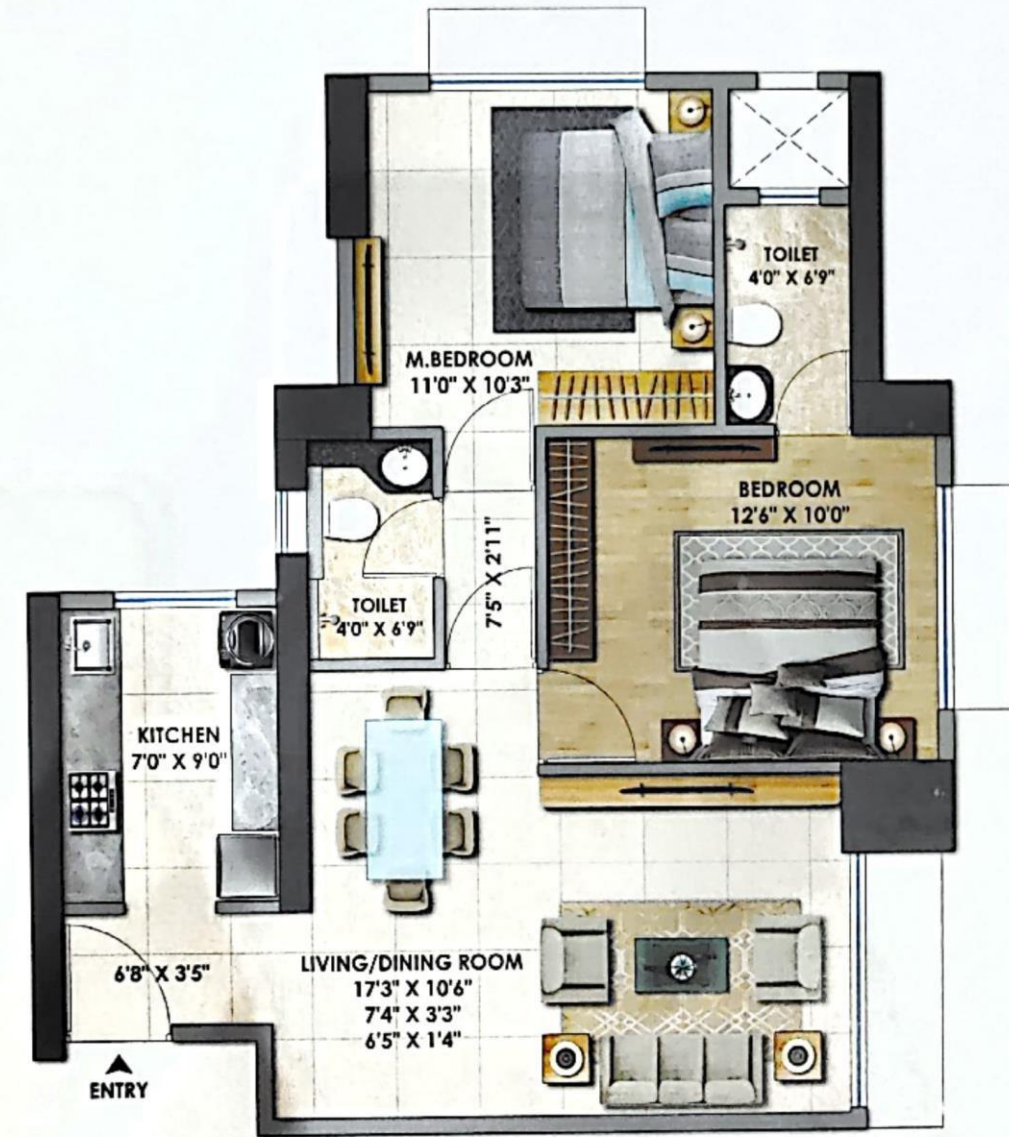


PLAN NOT TO SCALE

MahaRERA Registration No: P51800035093 Available on: <https://maharera.mahaonline.gov.in>

Disclaimer: The Furniture, Fixtures, Interior Work, Design options and Fittings as displayed in this communication are for showcasing purpose only and do not form part of standard amenities to be provided in the Flat/Premises. The Flat/Premises offered for Sale are unfurnished and the registered Agreement for Sale between the Promoter and the purchaser alone will be final and binding. The areas & dimensions shown herein are subject to a variation of +/- 3%. Promoter reserves its right to upgrade, modify, relocate, enhance, make changes, delete or alter the common amenities, refuge floor &/or height of the building and for any features or as may be required as per approvals & permission granted by the concerned authorities from time to time. Joint development with Surya Builders and Developers.

**2 BHK**  
**650 SQ.FT.**



PLAN NOT TO SCALE

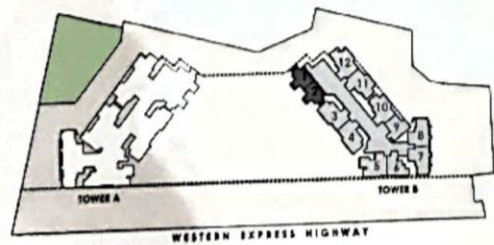
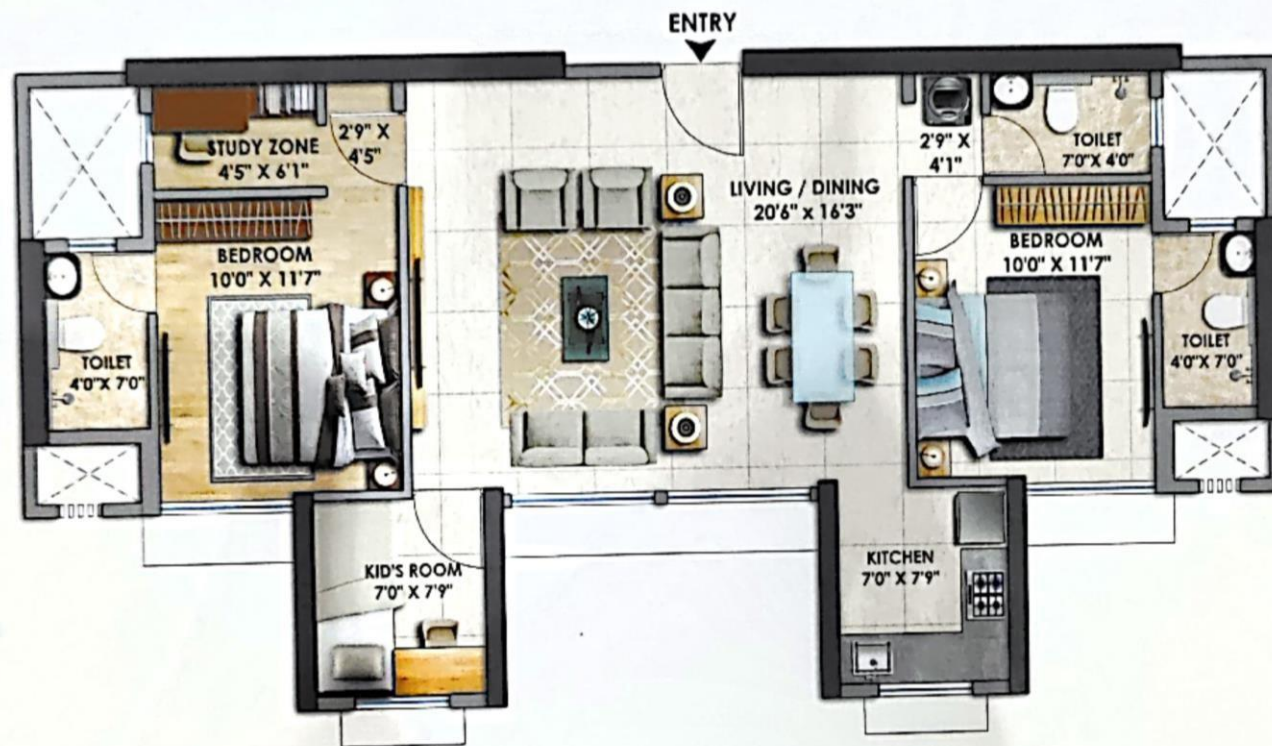
MahaRERA Registration No: P51800035093 Available on: <https://maharera.mahaonline.gov.in>

Disclaimer: The Furniture, Fixtures, Interior Work, Design options and Fittings as displayed in this communication are for showcasing purpose only and do not form part of standard amenities to be provided in the Flat/Premises. The Flat/Premises offered for Sale are unfurnished and the registered Agreement for Sale between the Promoter and the purchaser alone will be final and binding. The areas & dimensions shown herein are subject to a variation of +/- 3%. Promoter reserves its right to upgrade, modify, relocate, enhance, make changes, delete or alter the common amenities, refuge floor &/or height of the building and for any features or as may be required as per approvals & permission granted by the concerned authorities from time to time. Joint development with Surya Builders and Developers.



### 3 BHK (COMPACT)

842 SQ.FT.

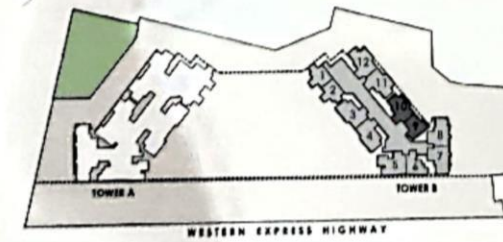
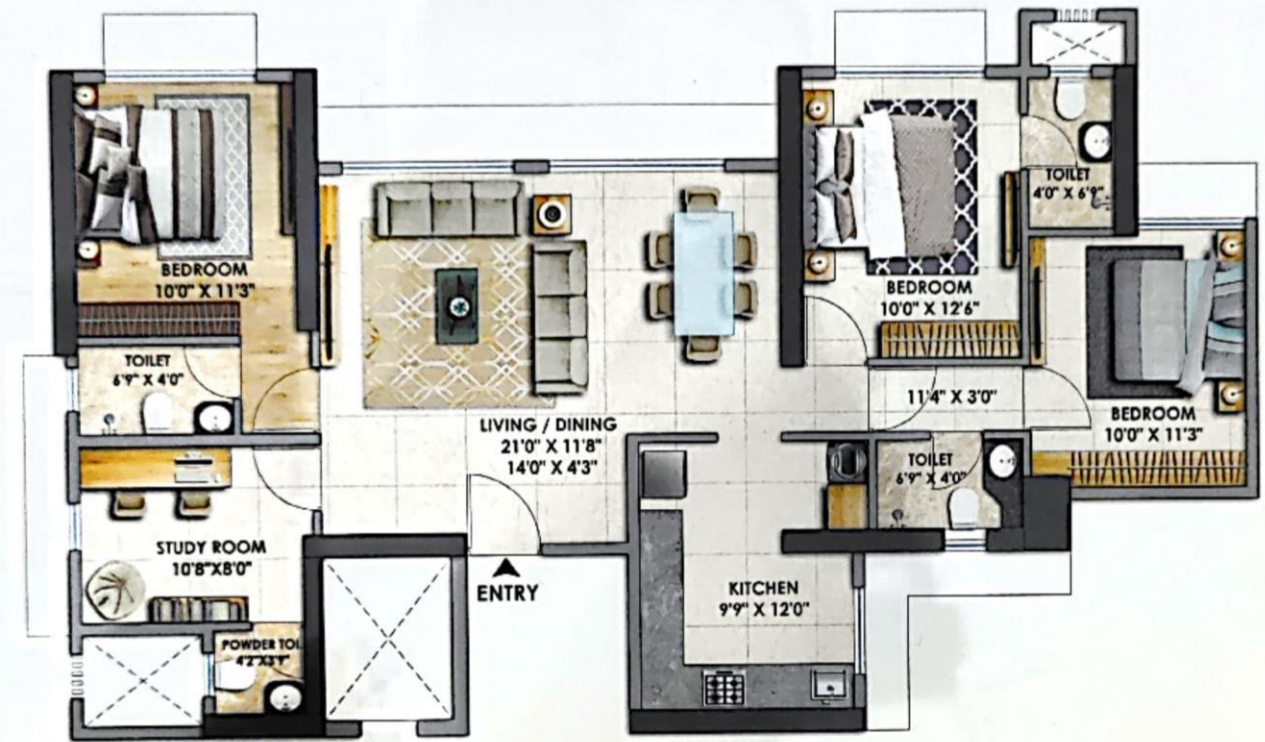


MaharERA Registration No: P51800035093 Available on: <https://maharera.mahaonline.gov.in>

Disclaimer: The Furniture, Fixtures, Interior Work, Design options and Fittings as displayed in this communication are for showcasing purpose only and do not form part of standard amenities to be provided in the Flat/Premises. The Flat/Premises offered for Sale are unfurnished and the registered Agreement for Sale between the Promoter and the purchaser alone will be final and binding. The areas & dimensions shown herein are subject to a variation of +/- 3%. Promoter reserves its right to upgrade, modify, relocate, enhance, make changes, delete or alter the common amenities, refuge floor &/or height of the building and for any features or as may be required as per approvals & permission granted by the concerned authorities from time to time. Joint development with Surya Builders and Developers.

### 3 BHK + STUDY

1059 SQ.FT.

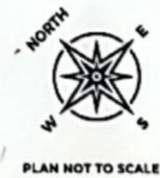
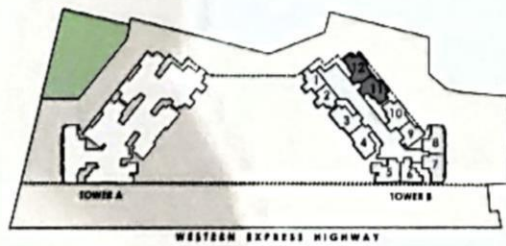
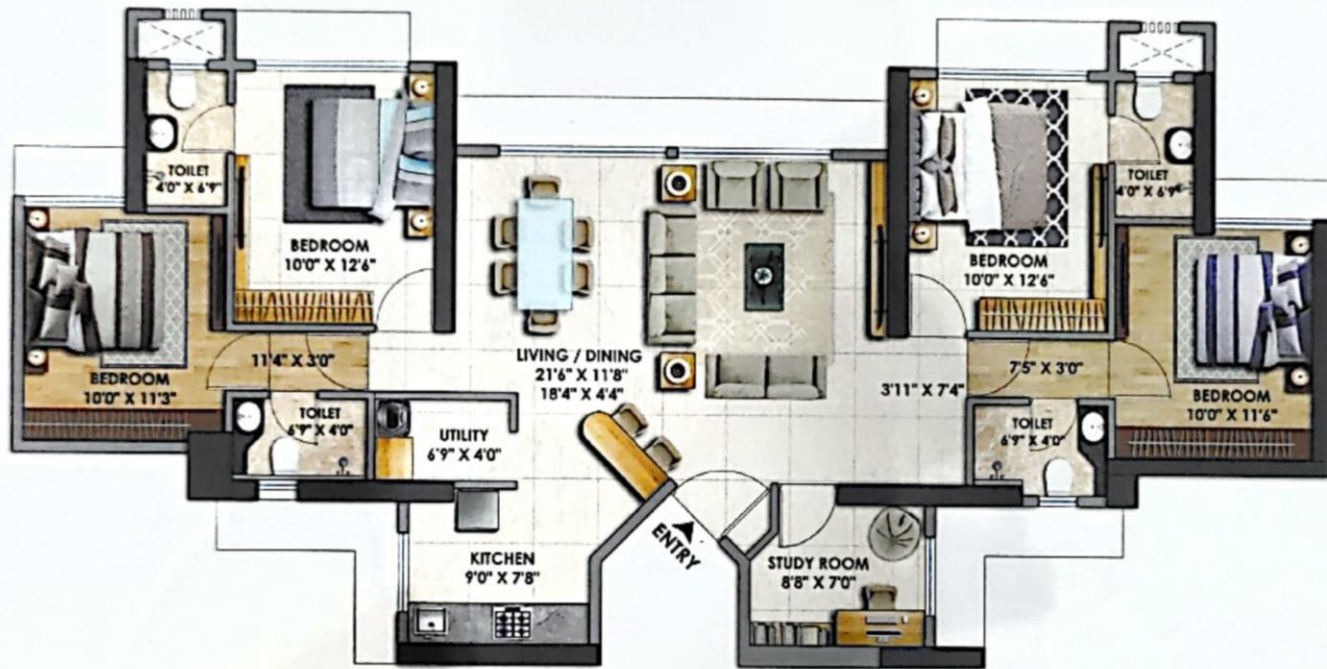


MaharERA Registration No: P51800035093 Available on: <https://maharera.mahaonline.gov.in>

Disclaimer: The Furniture, Fixtures, Interior Work, Design options and Fittings as displayed in this communication are for showcasing purpose only and do not form part of standard amenities to be provided in the Flat/Premises. The Flat/Premises offered for Sale are unfurnished and the registered Agreement for Sale between the Promoter and the purchaser alone will be final and binding. The areas & dimensions shown herein are subject to a variation of +/- 3%. Promoter reserves its right to upgrade, modify, relocate, enhance, make changes, delete or alter the common amenities, refuge floor &/or height of the building and for any features or as may be required as per approvals & permission granted by the concerned authorities from time to time. Joint development with Surya Builders and Developers.

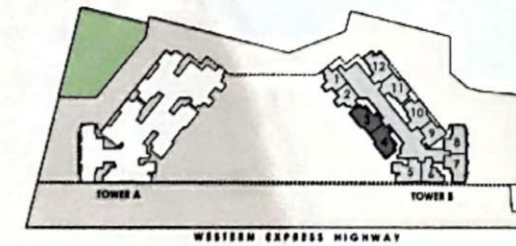
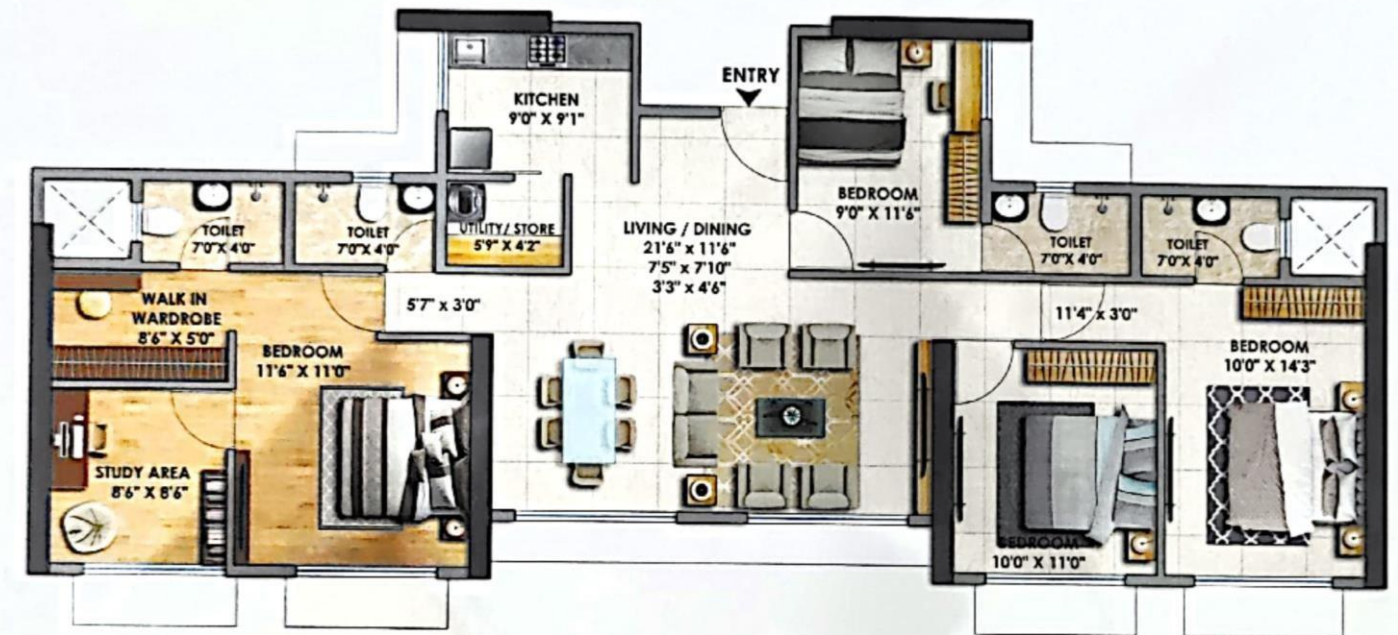
### 4 BHK + STUDY

1242 SQ.FT.



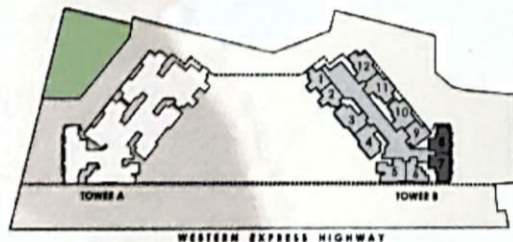
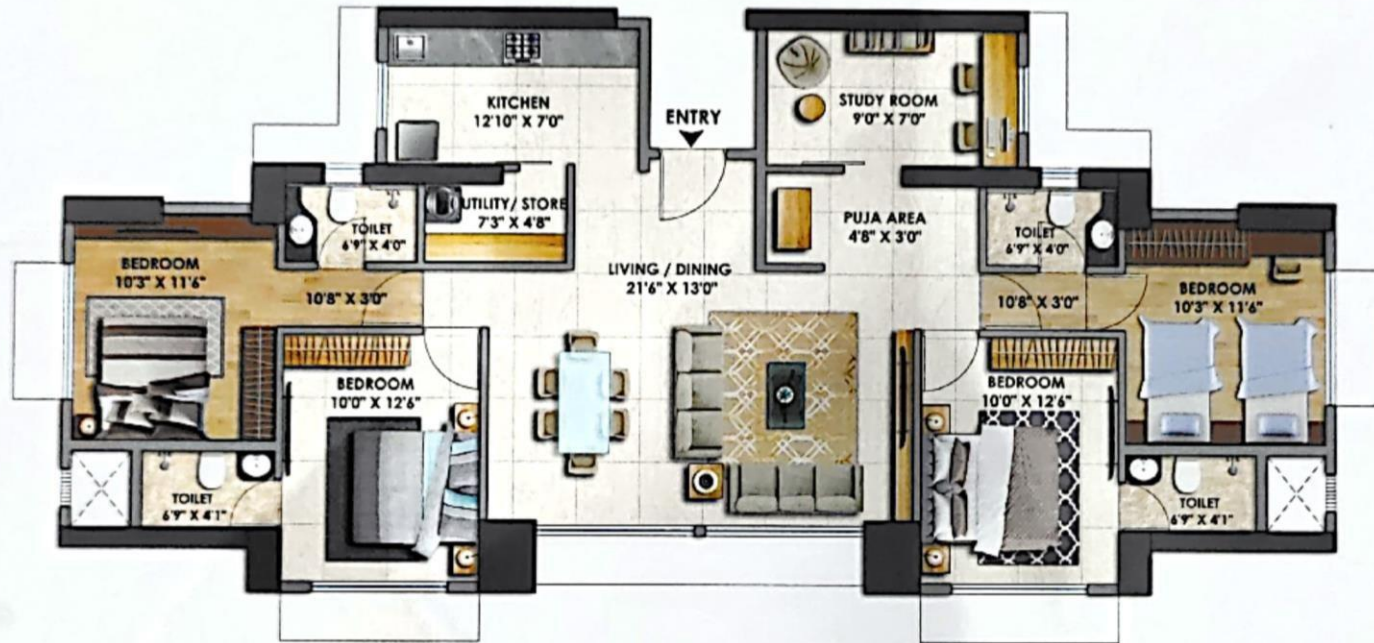
### 4 BHK + STUDY

1256 SQ.FT.



## 4 BHK + STUDY

1307 SQ.FT.



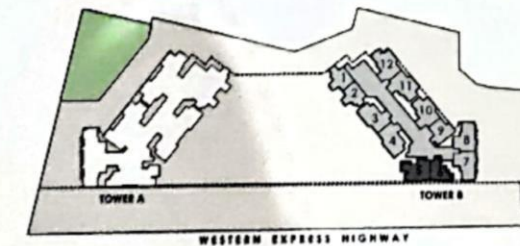
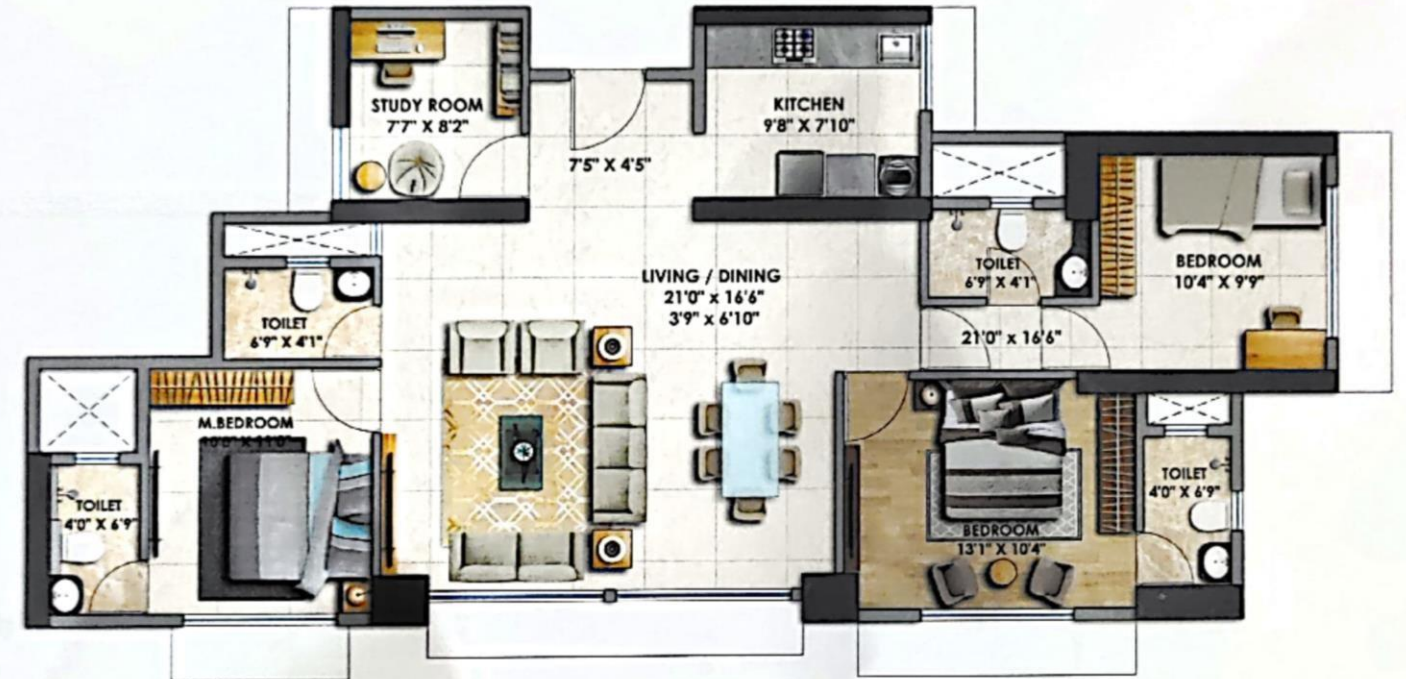
MahaRERA Registration No: P51800035093 Available on: <https://maharera.mahaonline.gov.in>

Disclaimer: The Furniture, Fixtures, Interior Work, Design options and Fittings as displayed in this communication are for showcasing purpose only and do not form part of standard amenities to be provided in the Flat/Premises. The Flat/Premises offered for Sale are unfurnished and the registered Agreement for Sale between the Promoter and the purchaser alone will be final and binding. The areas & dimensions shown herein are subject to a variation of +/- 5%. Promoter reserves its right to upgrade, modify, relocate, enhance, make changes, delete or alter the common amenities, refuge floor &/or height of the building and for any features or as may be required as per approvals & permission granted by the concerned authorities from time to time. Joint development with Surya Builders and Developers.

FOR INTERNAL PURPOSE ONLY

## 3 BHK + STUDY

1071 SQ.FT.



MahaRERA Registration No: P51800035093 Available on: <https://maharera.mahaonline.gov.in>

Disclaimer: The Furniture, Fixtures, Interior Work, Design options and Fittings as displayed in this communication are for showcasing purpose only and do not form part of standard amenities to be provided in the Flat/Premises. The Flat/Premises offered for Sale are unfurnished and the registered Agreement for Sale between the Promoter and the purchaser alone will be final and binding. The areas & dimensions shown herein are subject to a variation of +/- 3%. Promoter reserves its right to upgrade, modify, relocate, enhance, make changes, delete or alter the common amenities, refuge floor &/or height of the building and for any features or as may be required as per approvals & permission granted by the concerned authorities from time to time. Joint development with Surya Builders and Developers.

FOR INTERNAL PURPOSE ONLY