



THE WORLD, *at your home.*

PRIVILEGE SPREAD ACROSS 1.7 ACRES.

Reflecting the magnetism of the refined, living at Bharat Altavistas is an honour. A privilege for the reserved few, the mark of opulence and absolute discretion. Designed to reflect the tenets of haute société, here's the latest addition to the world's most discerning addresses.

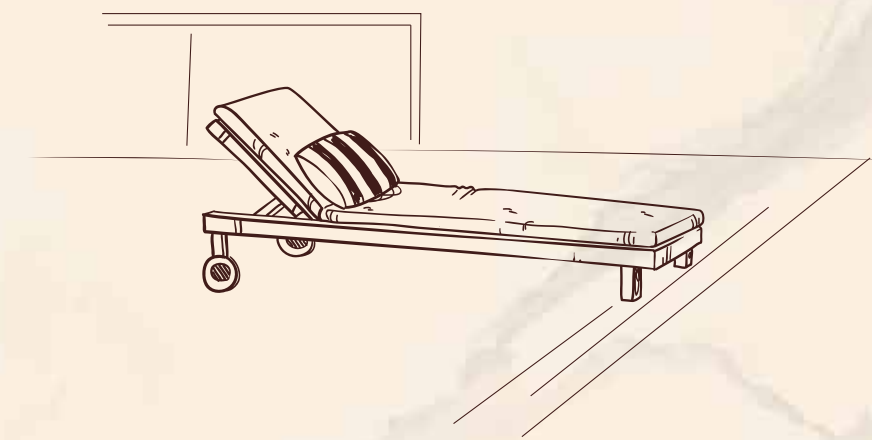
An art of intuitive experiences, arrive at your home – a rare masterpiece.



Making a grand entrance isn't about settling in. It's about owning it. In spaces designed to meet your world, you can't imagine living any other way.

Created for well-being, lush spaces, and palatial pleasure – living at Bharat Altavistas is more than being at home. It is a higher perspective.

Step inside your abode, where charm and comfort blend into a symphony of the exquisite.



DESIRED BY MANY, *But attained by a few.*



WELCOME TO THE ENCLAVE.
Designed for the select few.



THE PRESTIGIOUS POSTCODE

the city looks up to.

Steeped in dignity and esteem, Lokhandwala has emerged into the city's most coveted neighbourhood.

Bharat Altavistas is a once-in-a-lifetime opportunity to invest in a highly desirable and prestigious community. Committed to expanding the lifestyle of branded residences to capture the growing demand for our unique living concepts and exceptional service standards, Lokhandwala represents the pinnacle of ever-expanding luxury market.



Representative Image



Representative Image

THE ICONIC PRECINCT IS A HOTBED FOR INVESTMENT

Home to unrestrained luxury and seamless connectivity, Lokhandwala historically has commanded a Higher rate of Interests across western suburbs.

WELL-DEVELOPED INFRASTRUCTURE AND GROWTH

Retail and culinary marvels, sheer connectivity, growing business zones, and appreciating prices has made this area a premier sector with sought-after homes and rental demand.



Representative Image



AT HOME, *Yet the world at your fingertips.*

Redefining the art of living in Mumbai's landscape, reside in the centre of a network that spans the city and beyond. Strategically positioned to access the sheer acceleration of unobstructed pathways, Lokhandwala captures essence of the future.

Fast paced and consistent, the world is at the apex of connectivity.

CONNECTIVITY

DN Nagar Metro Station	1.8 Kms
Western Express Highway	4.8 Kms
Andheri Railway Station	5.5 Kms
Andheri Metro Station	5.5 Kms
Chhatrapati Shivaji International Airport	8.7 Kms

RESTAURANTS

YAZU	1 Km
FOO	1 Km
MiniyaTurk	1.3 Kms
RIKE	1.7 Kms
Pink Wasabi	4 Kms
Blabber All Day	4.5 Kms

HEALTHCARE

Kokilaben Dhirubhai Ambani Hospital	1.3 Kms
Belle-Vue Multispeciality Hospital	1.8 Kms
Criticare Multi Speciality Hospital	5.4 Kms

UPCOMING INFRASTRUCTURE

Upcoming Metro Line 6	0.1 Km
Upcoming Coastal Road	4.7 Kms

ENTERTAINMENT

Infiniti Mall	0.8 Kms
Citi Mall	1.2 Kms
Fun Republic	1.5 Kms
Celebration Club	1.5 Kms
Mega Mall	2.1 Kms

EDUCATION

RIMS International School & Junior College	1.6 Kms
CP Goenka International School	1.6 Kms
Billabong International	2.3 Kms
Ecole Mondiale	4.2 Kms

Map not to scale

*Source: Google Maps

A LOCATION THAT STANDS OUT,
just like your persona.

UPCOMING INFRASTRUCTURE PROJECTS

THE MUMBAI COASTAL ROAD:

The Mumbai Coastal Road will connect to Andheri at the Lokhandwala Junction interchange. The Lokhandwala Junction interchange is expected to be completed in 2024, along with the rest project. Once the coastal road is connected to Andheri, it will provide a much-needed alternative to the city's congested roads.



ANDHERI METRO LINE 1 AND 6:

This metro will start from Lokhandwala and will end at Vikhroli Eastern Express Highway, while connecting Yellow Line Metro at Adarsh Nagar, Red Line Metro at JVLR Junction, Aqua Line at SEEPZ Village, and Green Line at Kanjurmarg.



HERE, SKY IS NOT THE LIMIT.

*It's just the beginning of
your everyday rooftop experiences.*

+ 180M JOGGING/WALKING TRACK

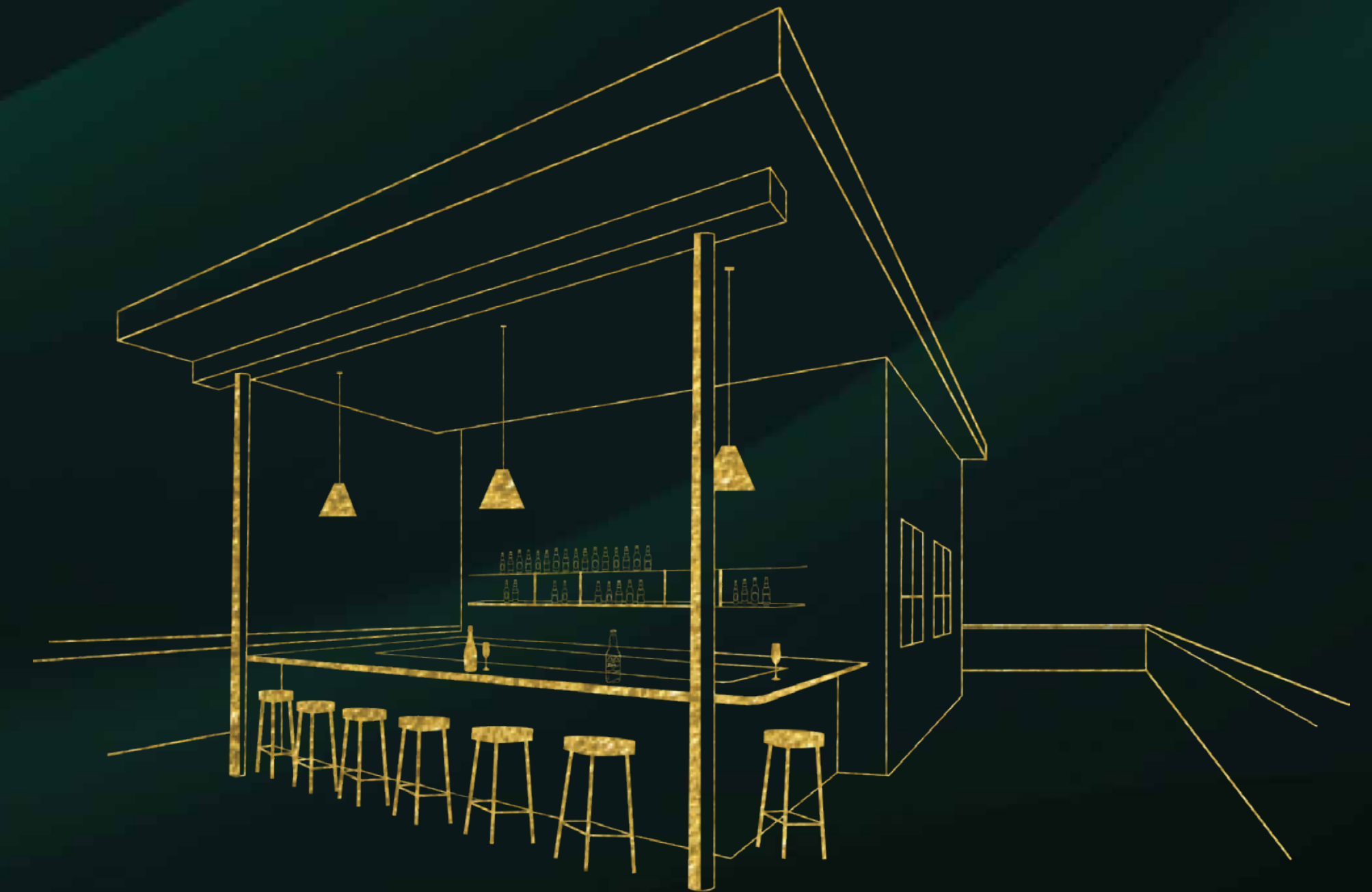
+ PARTY AREA WITH KITCHEN SPACE

+ GAZEBO

+ GREEN LAWN

+ BBQ AREA

+ LOUNGE WITH FIRE-PIT





GAZEBO

✧ *Every celebration is a visual delight.*



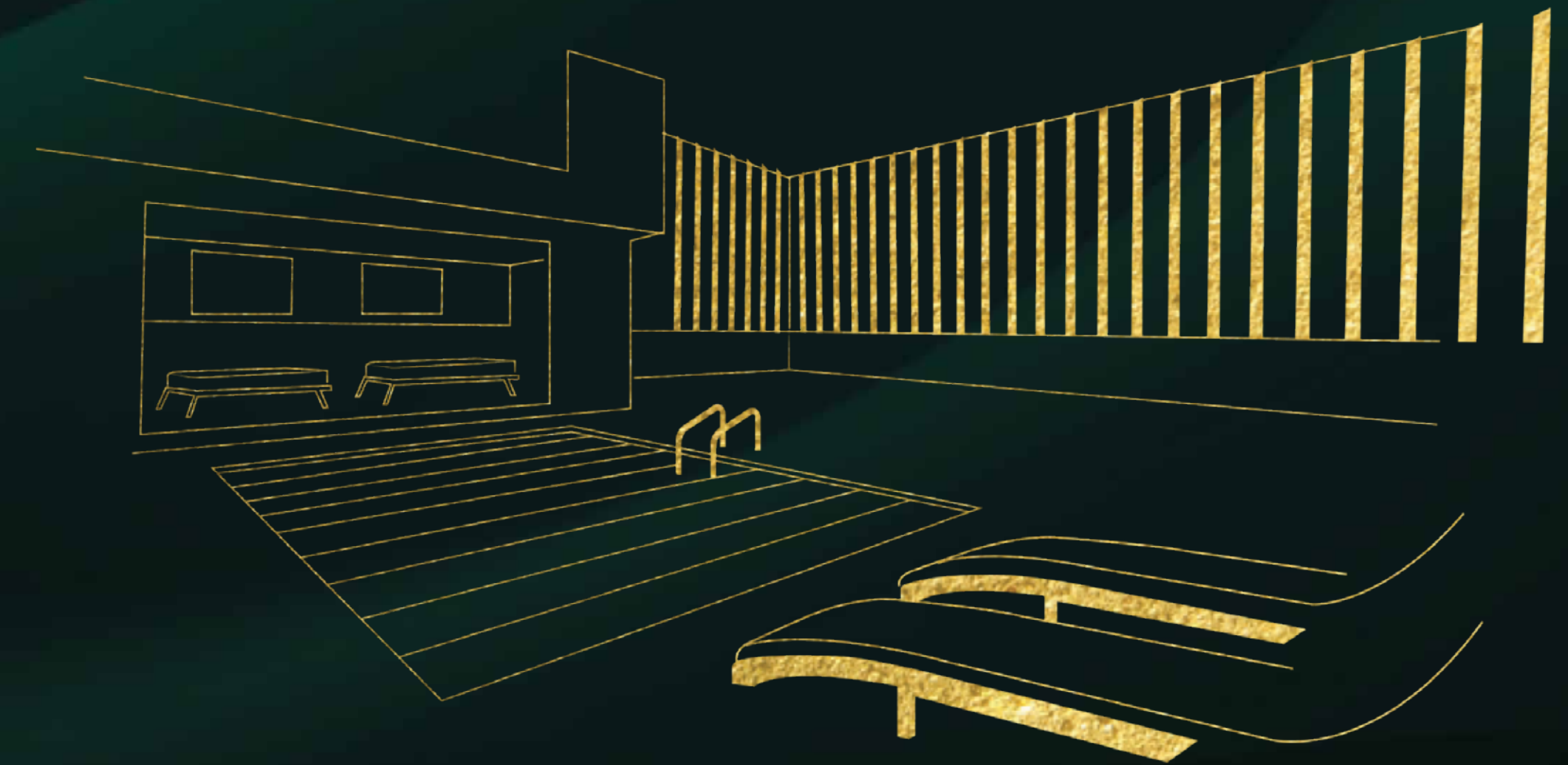
LOUNGE WITH FIRE-PIT

✧ *Indulge in unforgettable soirées.*

A NEW INTUITIVE EXPERIENCE, EVERYDAY.

*World-class experiences
that will leave you impressed.*

- ✦ GRAND ENTRANCE LOBBY
- ✦ KIDS POOL WITH SLIDE
- ✦ SWIMMING POOL + DECK
- ✦ FULLY EQUIPPED GYMNASIUM
- ✦ FIRST-IN-CLASS BOXING RING
- ✦ MINI THEATER
- ✦ MEDITATION DOME
- ✦ SQUASH COURT
- ✦ INDOOR GAMING AREA
- ✦ BANQUET HALL
- ✦ CRÛCHE
- ✦ SPA (MEN & WOMEN)
- ✦ BASKETBALL & MULTIPURPOSE COURT
- ✦ WORKING PODS & MEETING ROOM
- ✦ SALON
- ✦ LOUNGE
- ✦ YOGA/ZUMBA ROOM
- ✦ BADMINTON COURT
- ✦ PRAYER ROOM
- ✦ INDOOR CAFE
- ✦ INDOOR LOUNGE
- ✦ KARAOKE ROOM
- ✦ TRAMPOLINE
- ✦ MEETING ROOMS





KIDS POOL WITH WATER SLIDES



✦ *A home, a water park, a dream come true! Turning their imaginations into reality.*



SWIMMING POOL WITH DECK



✦ *Float on top of the city.*



FULLY EQUIPPED GYMNASIUM



Your fitness routine, now a notch higher.



FIRST-IN-CLASS BOXING RING



Come in as a guest, Train like a champion.



MINI THEATRE

✧ *The best screen-time is the ones spent with loved ones.*



MEDITATION DOME

✧ *A new standard of wellness. Your cocoon of safe space.*



CRÈCHE



✧ *The world is their playground, and home is where they start.*



BASKETBALL &
MULTI PURPOSE COURT



✧ *A space to challenge your friends over a quick game.*



BANQUET HALL

✦ *A lavish space for spectacular celebrations.*



LOUNGE

✦ *Gatherings where celebrations unfold.*



YOGA/ZUMBA ROOM



Connect with yourself in a quiet nook of corner.



CAFE



Steaming Cups and Cozy Vibes

SPACES THAT FLAUNT EMINENCE.
Here, discerning tastes meet deserving Homes.





LIVE *untethered.*

Poised between the sea, city, and sky, embrace the finest taste of acquired living. Standing tall across 29 storeys and reeking of exclusivity, Bharat Altavistas flaunts tailored-to-taste residences. Across a network of visionaries, uncover the allure of aristocratic discretion.

With an exquisite expanse that adorns the residential facade, elevation isn't a far-fetched pinnacle.

ONE WORLD MANY STORIES.



1.7 ACRE LAND PARCEL.



SOARING 29 STOREYS IN THE SKY.



2 DEDICATED WINGS (EAST WING - A, WEST WING - B)



5 LEVELS OF PODIUM.



FIRST HABITABLE FLOOR BEGINS 107FT. ABOVE GROUND LEVEL.



3.3 METRES FLOOR-TO-FLOOR HEIGHT.



SKY DECKS IN ALL APARTMENTS.



SPECTACULAR CITY & SEA VIEWS.



EXCLUSIVE SURFACE PARKING.



2 PODIUM CAR PARK WITH EACH APARTMENT.



VISIONS ARE SHARED,

But views are personal.

Reflective of the vibrant hues, stunning sunrises and sunsets, and mesmerising sea vistas, welcome to a realm where soul, sun and sky converge.

A perfect vantage point from which to appreciate the repertoire of the finest – some privileges are best enjoyed from the comfort of your chair.

ENDLESS VISTAS | ETERNAL SEA AND CITY VIEWS

WHEN YOU ARRIVE,
*Everything else is
taken care of.*

Step into a world where ease and grandeur begins with your presence. As you stride into your empire, welcome to a grand lobby that is personal, magnificent, and exceptional.



Jharat



HIGH-POWERED LIFE *At your doorstep.*

With high-speed elevators, experience a living that is not hurried, but encased in elegance. From the grand entrance to the comfort of your home, discover the ease of mind with a hands-free experience.

A STRETCH OF HOME *within the skies.*

Minimizing the distance between you and nature, this is less of a balcony and more like your private oasis. Spacious rooms open to sun-lit decks allowing you to move seamlessly from inside to outside. Enjoy a cup of coffee amid the natural fresh breeze or lounge with your favourite book. Whether hosting a barbecue or just admiring the view, there is always ample room for more.

SPACIOUS DECK WITH LIVING AND DINING

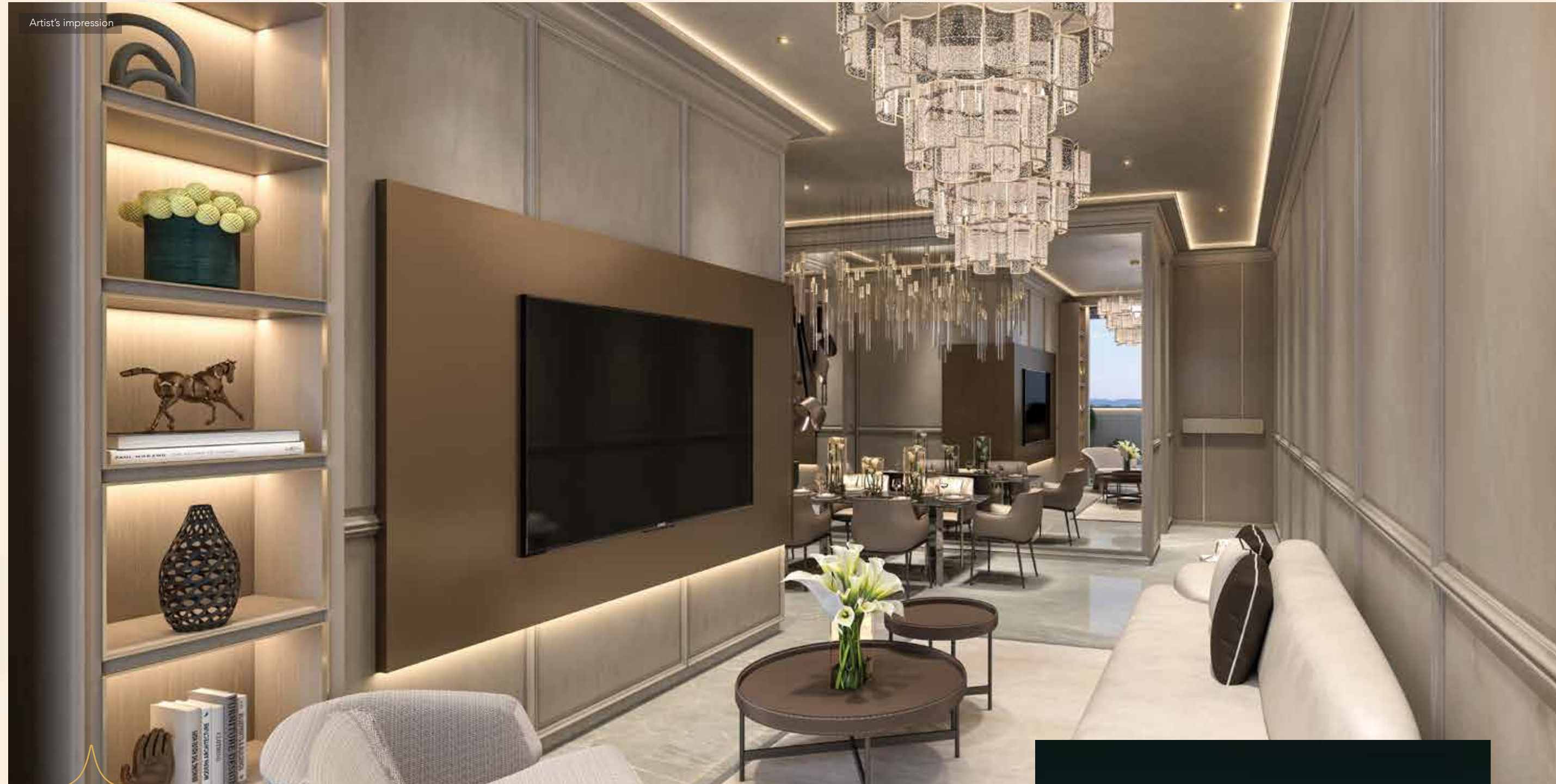




DESIGNED TO MEET
YOUR WORLD,
*You wouldn't want to
live any other way.*

Where the spaces are expansive and residents fewer, experience the reflective solitude. Embodying a distinctive spirit and style, 107 ft. above the ground, your residence is an open canvas. Anchored by expanse and volume, the rooms are an eloquent symphony of light and grace. Curating a life of unrestrained privilege, step beyond your abode under the cover of privacy.

With nothing else to perturb your reverie, your search for joie de vivre ends here.



LIVING ROOM

✦ *Uninterrupted living starts here.*



BEDROOM

✦ *The Majestic Haven.*



MASTER BED

✧ ✧ ✧
✧ *The suite dreams.*

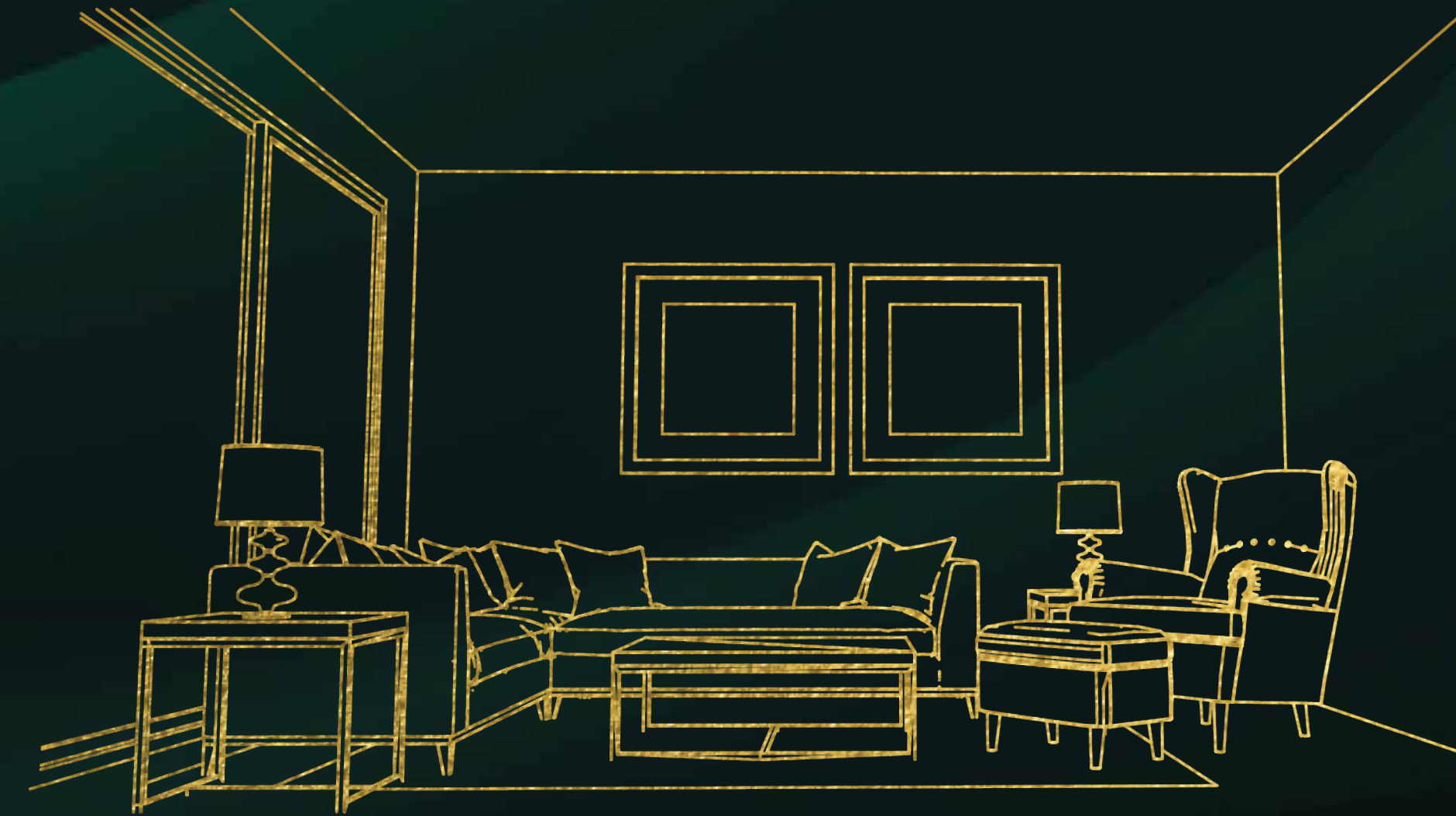


BATH

✧ ✧ ✧
✧ *The stately bath.*

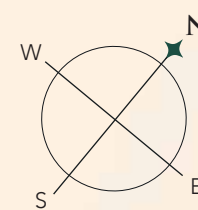
WHERE NO INTRUSIONS ARE ENTERTAINED,
A LIFE THAT MIRRORS YOUR JOURNEY.

We've set the stage for you.

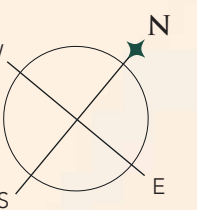




LAYOUT PLAN



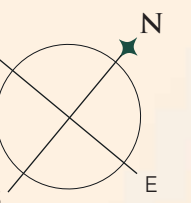
TYPICAL FLOOR PLAN



AMENITY FLOOR

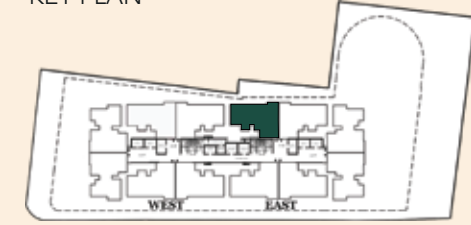
LEGEND:

- | | |
|---------------------------|-------------------------------|
| 1. Badminton Court | 15. Restaurant |
| 2. Multipurpose Court | 16. Karaoke Room |
| 3. Kids Pool With Slide | 17. Multipurpose Lawn |
| 4. Pool Deck | 18. Banquet Hall |
| 5. Swimming Pool | 19. Cafe & Indoor Gaming Area |
| 6. Shower & Changing Room | 20. Remote Working Area |
| 7. Yoga/Gym | 21. Individual Working Pods |
| 8. Boxing Ring | 22. Meeting Room |
| 9. Podium Reception Area | 23. Crèche |
| 10. Salon | 24. Mini Trampoline Park |
| 11. Spa-Men | 25. Outdoor Seating Area |
| 12. Spa-Women | 26. Meditation Dome |
| 13. Mini Theater | |
| 14. Squash Court | |

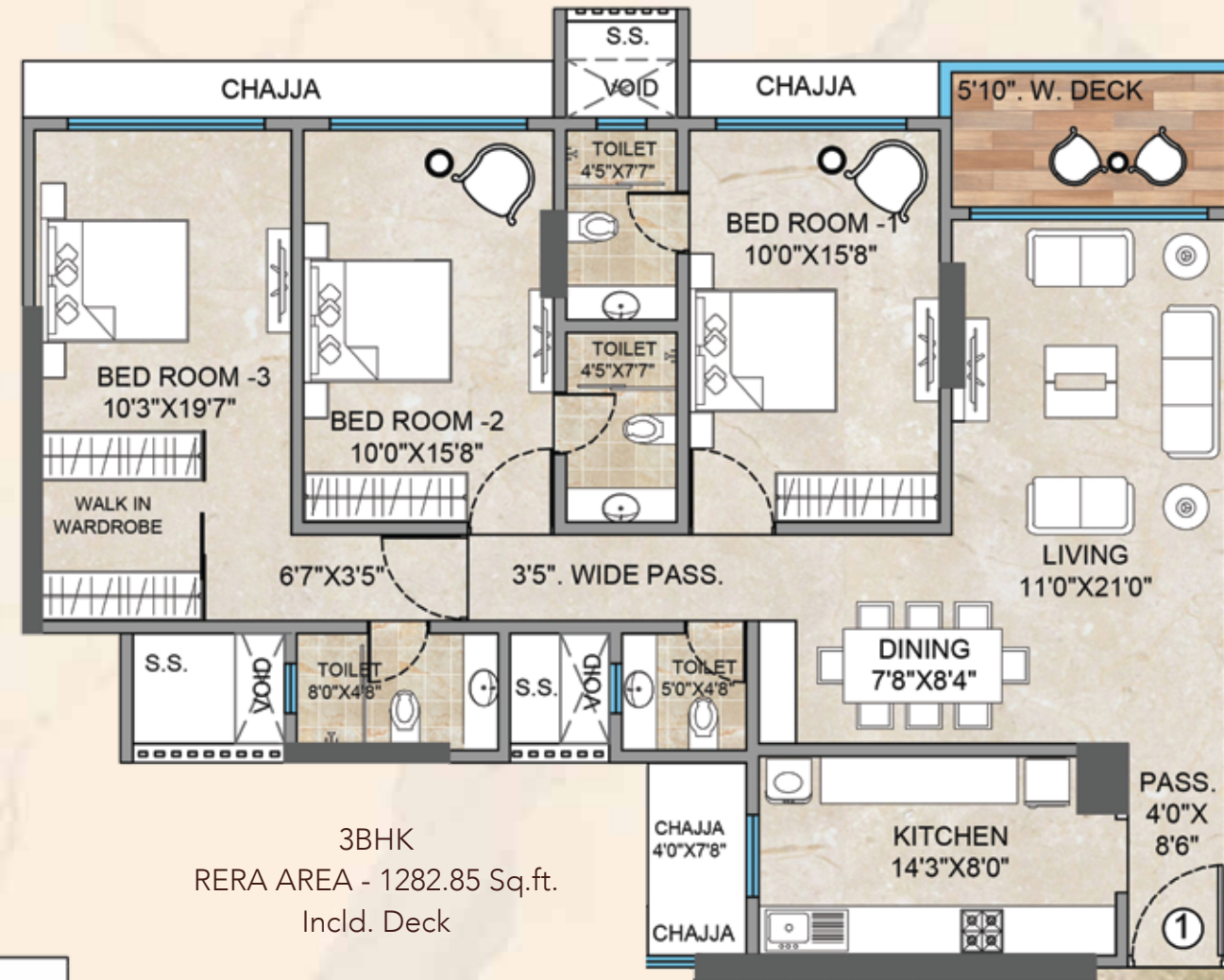


EAST SIDE TYPICAL FLOOR PLAN
FLAT NO. 1

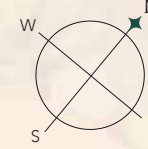
KEY PLAN



Sale Floor Plan

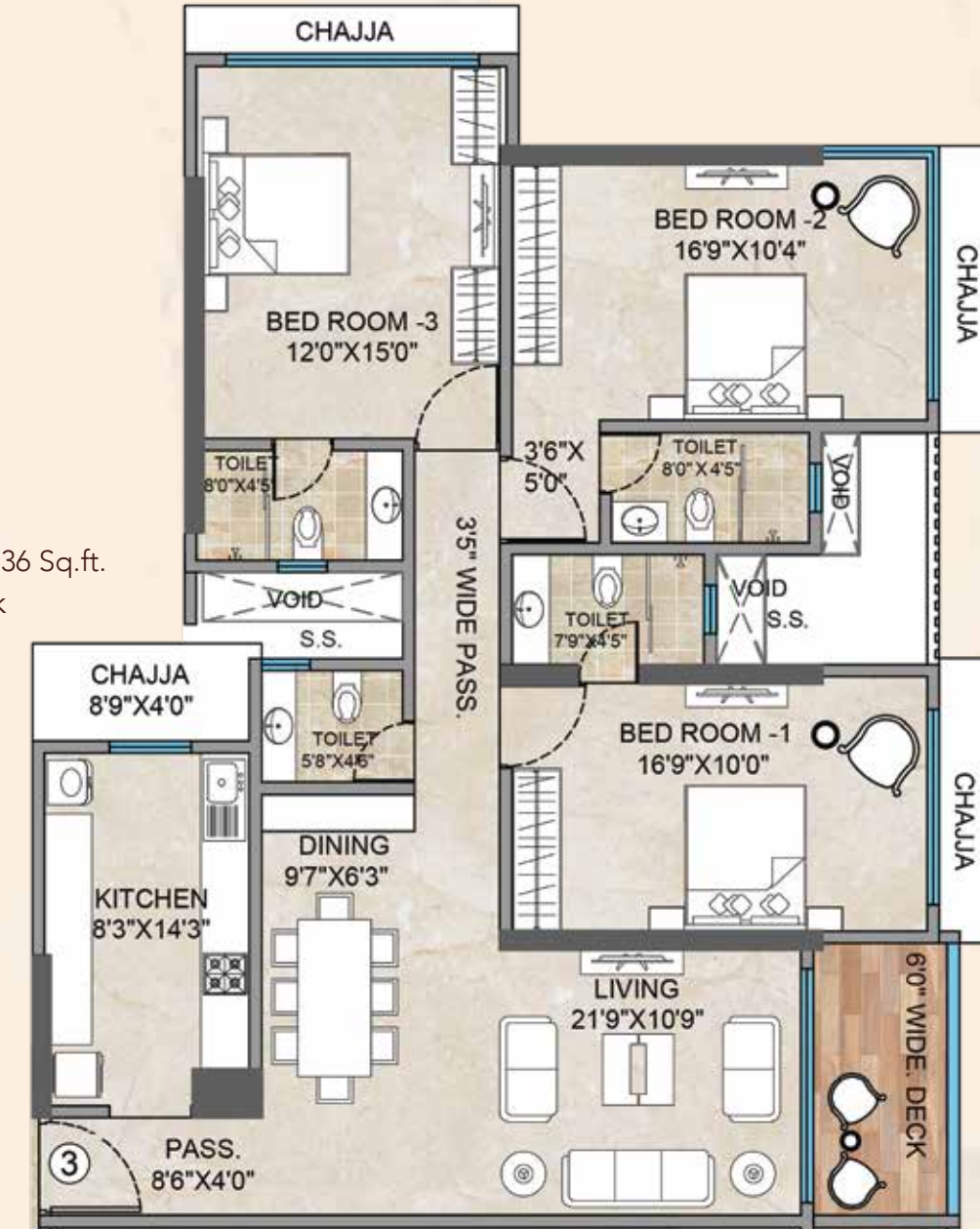


3BHK
RERA AREA - 1282.85 Sq.ft.
Incl. Deck

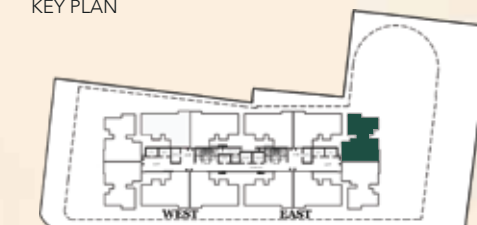


EAST SIDE TYPICAL FLOOR PLAN
FLAT NO. 3

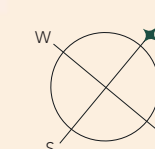
3BHK
RERA AREA - 1308.36 Sq.ft.
Incl. Deck



KEY PLAN

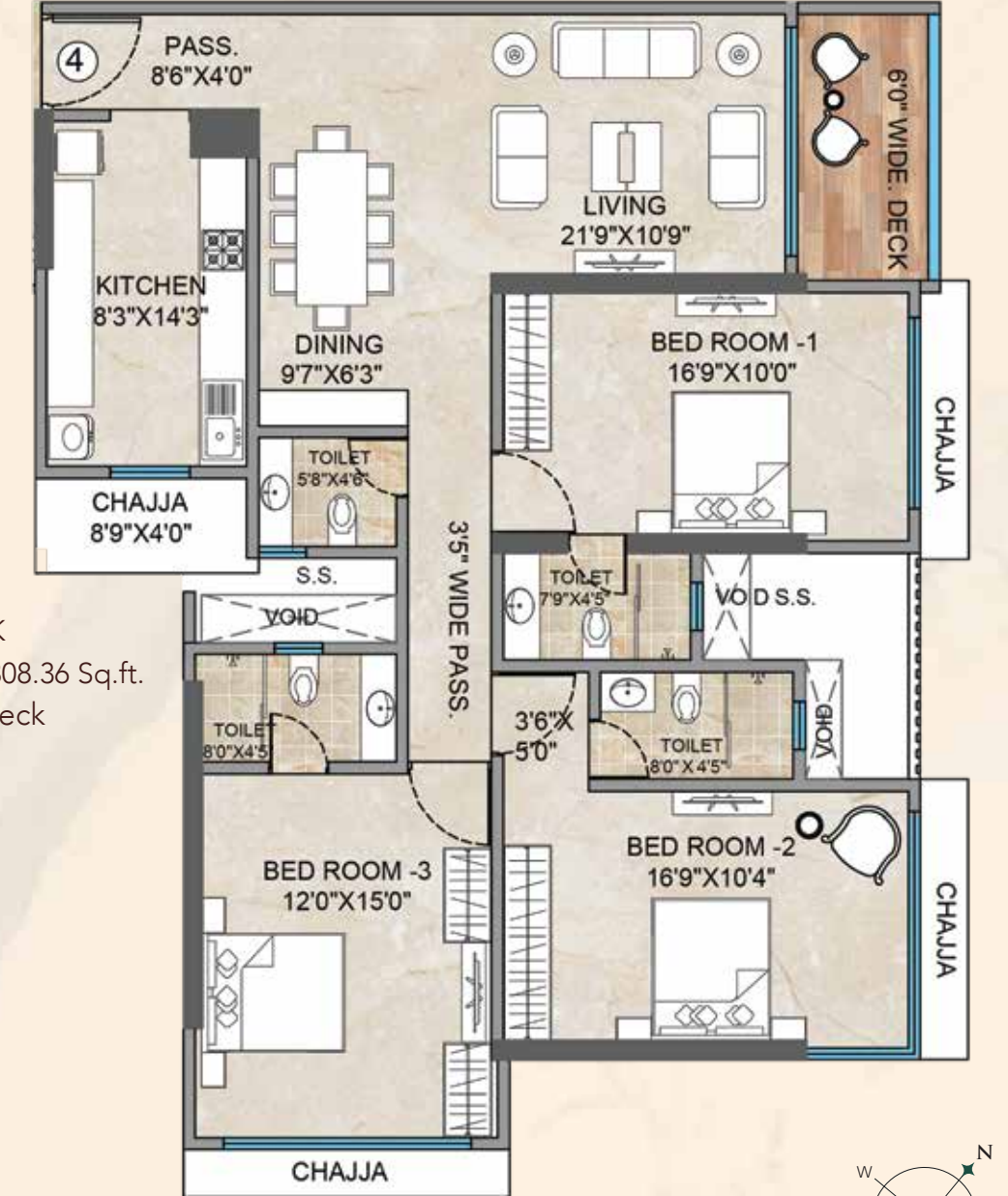


Sale Floor Plan



EAST SIDE TYPICAL FLOOR PLAN
FLAT NO. 4

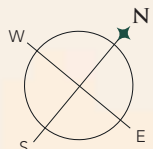
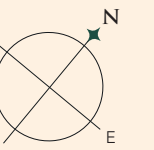
3BHK
RERA AREA - 1308.36 Sq.ft.
Incl. Deck

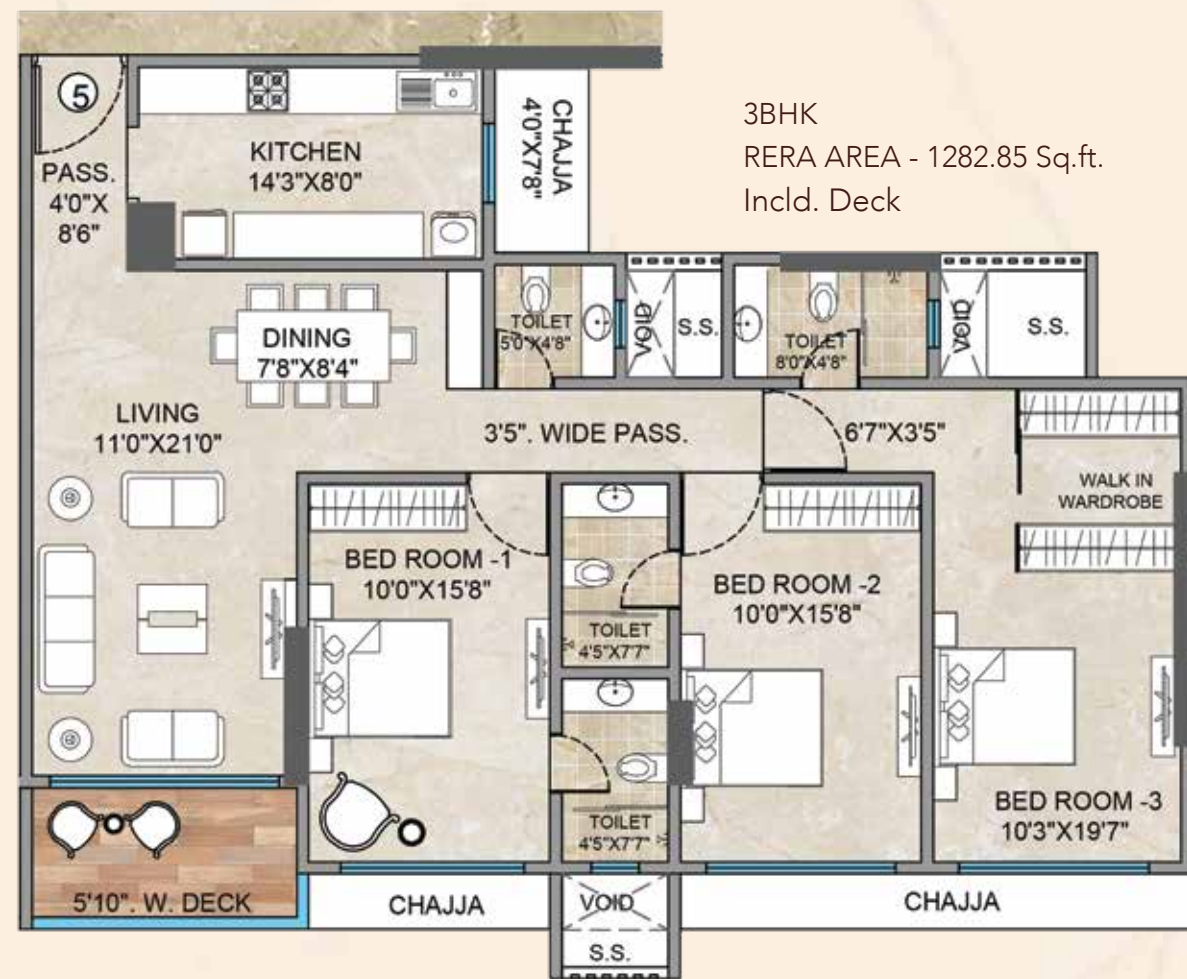


KEY PLAN

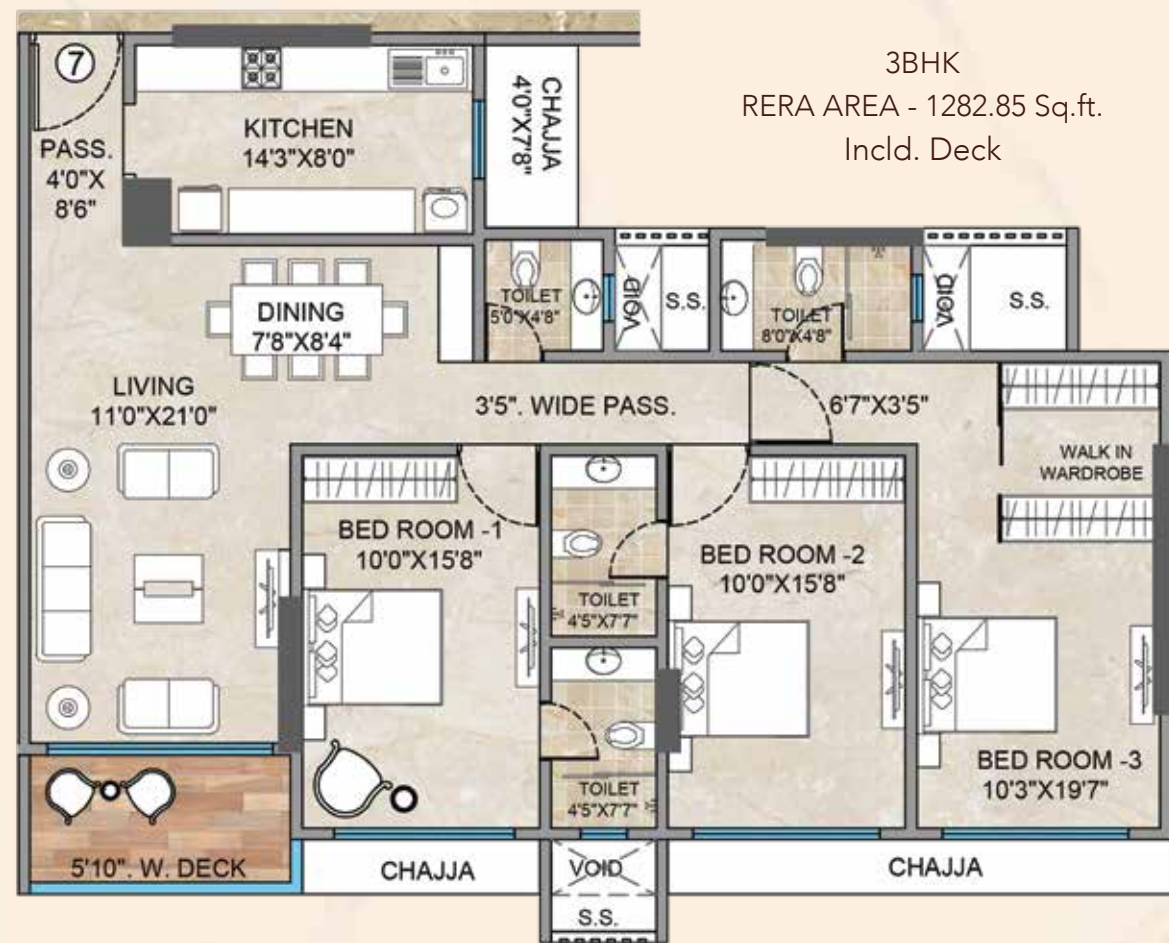
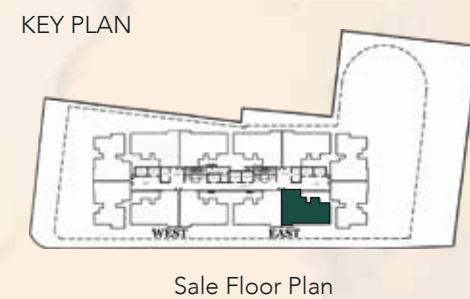


Sale Floor Plan

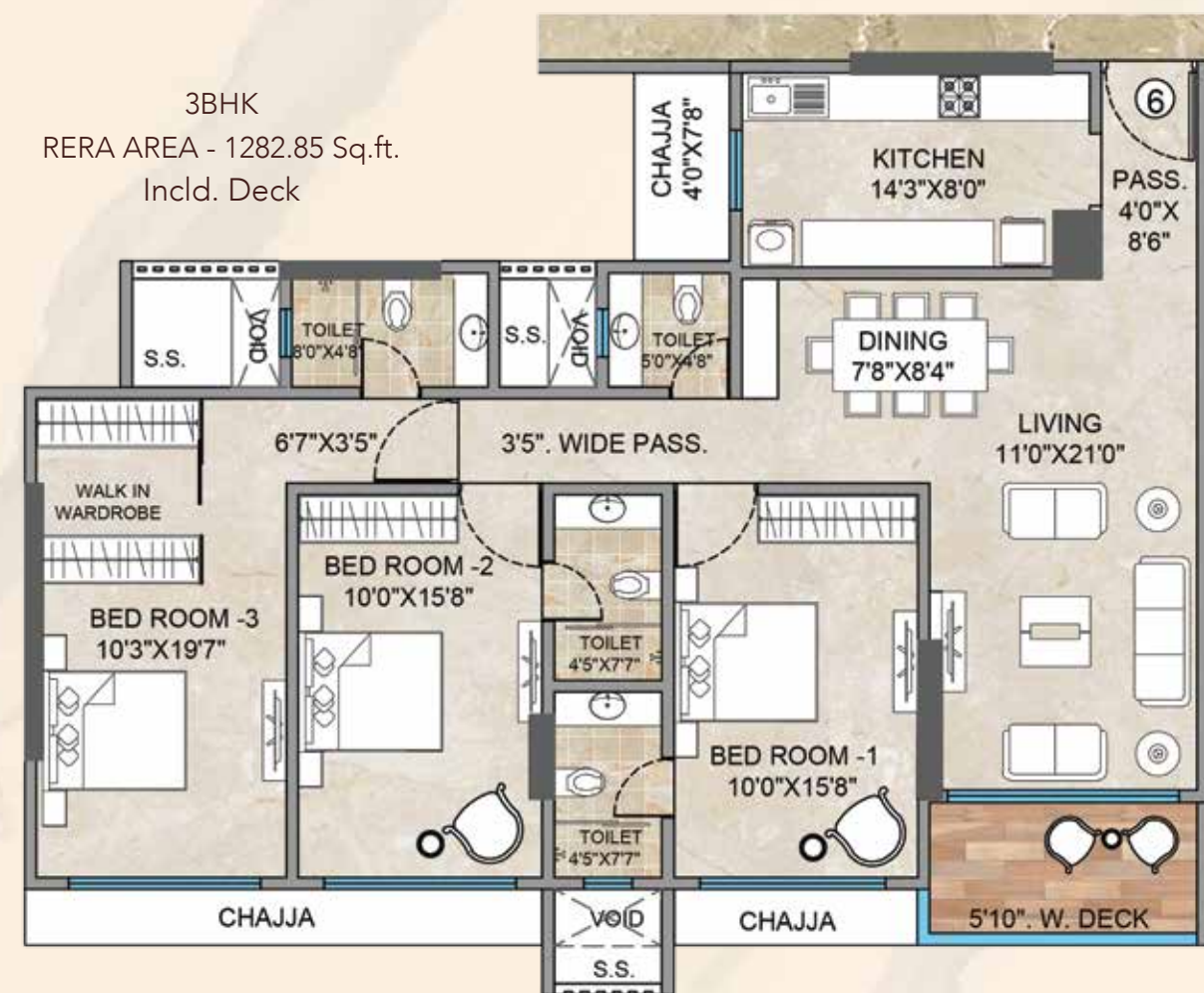
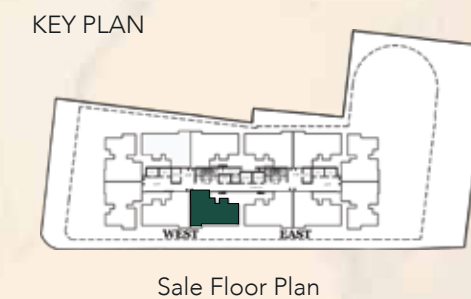




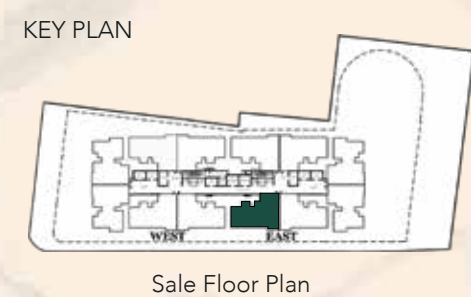
EAST SIDE
TYPICAL FLOOR PLAN
FLAT NO.5



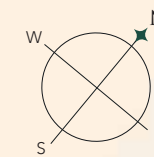
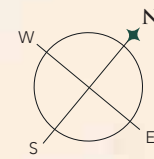
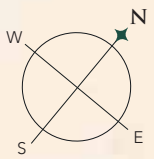
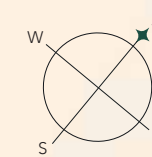
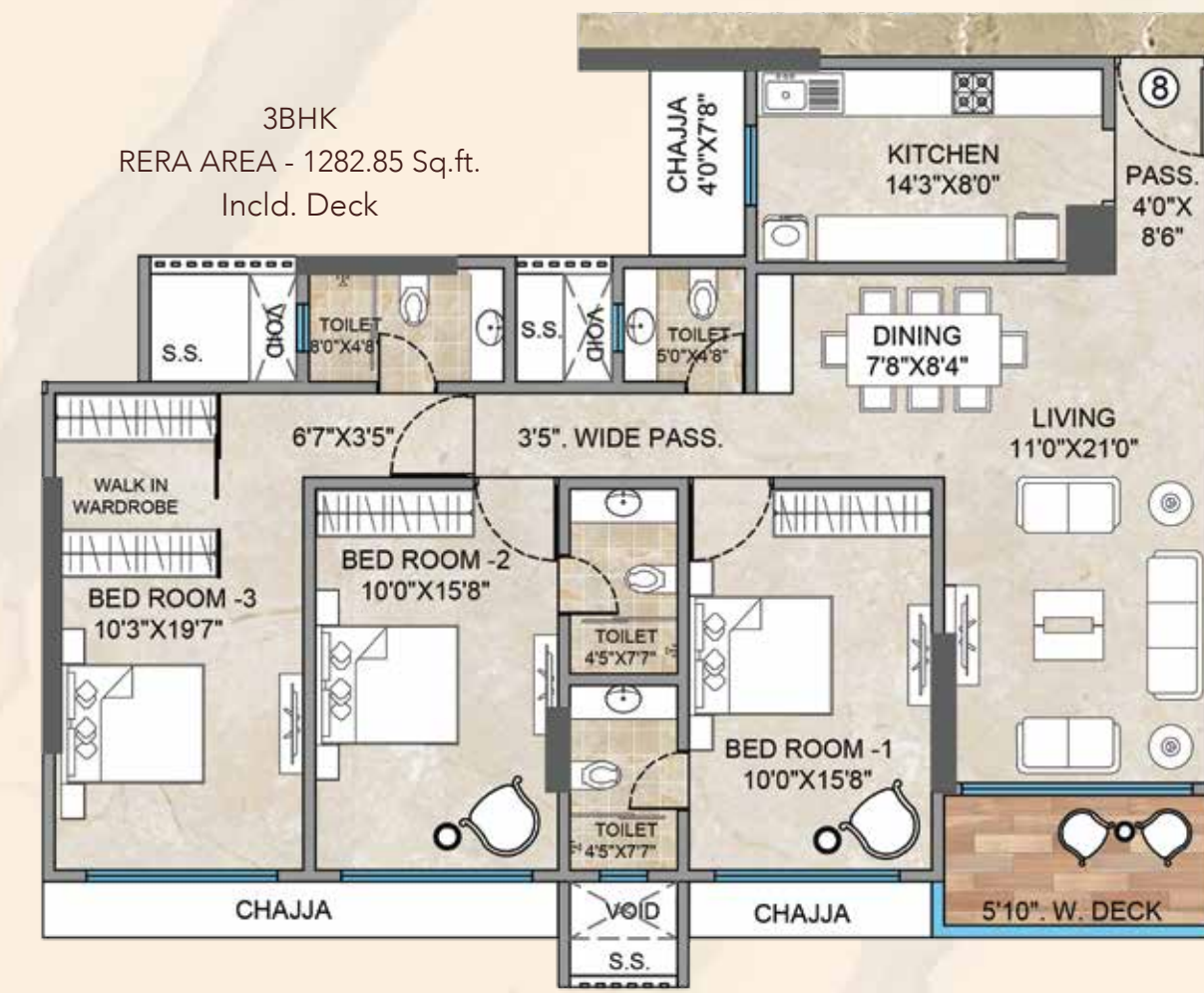
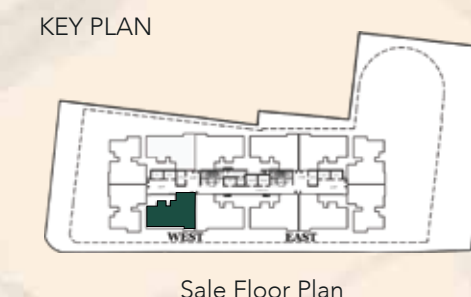
WEST SIDE
TYPICAL FLOOR PLAN
FLAT NO.7



EAST SIDE
TYPICAL FLOOR PLAN
FLAT NO.6

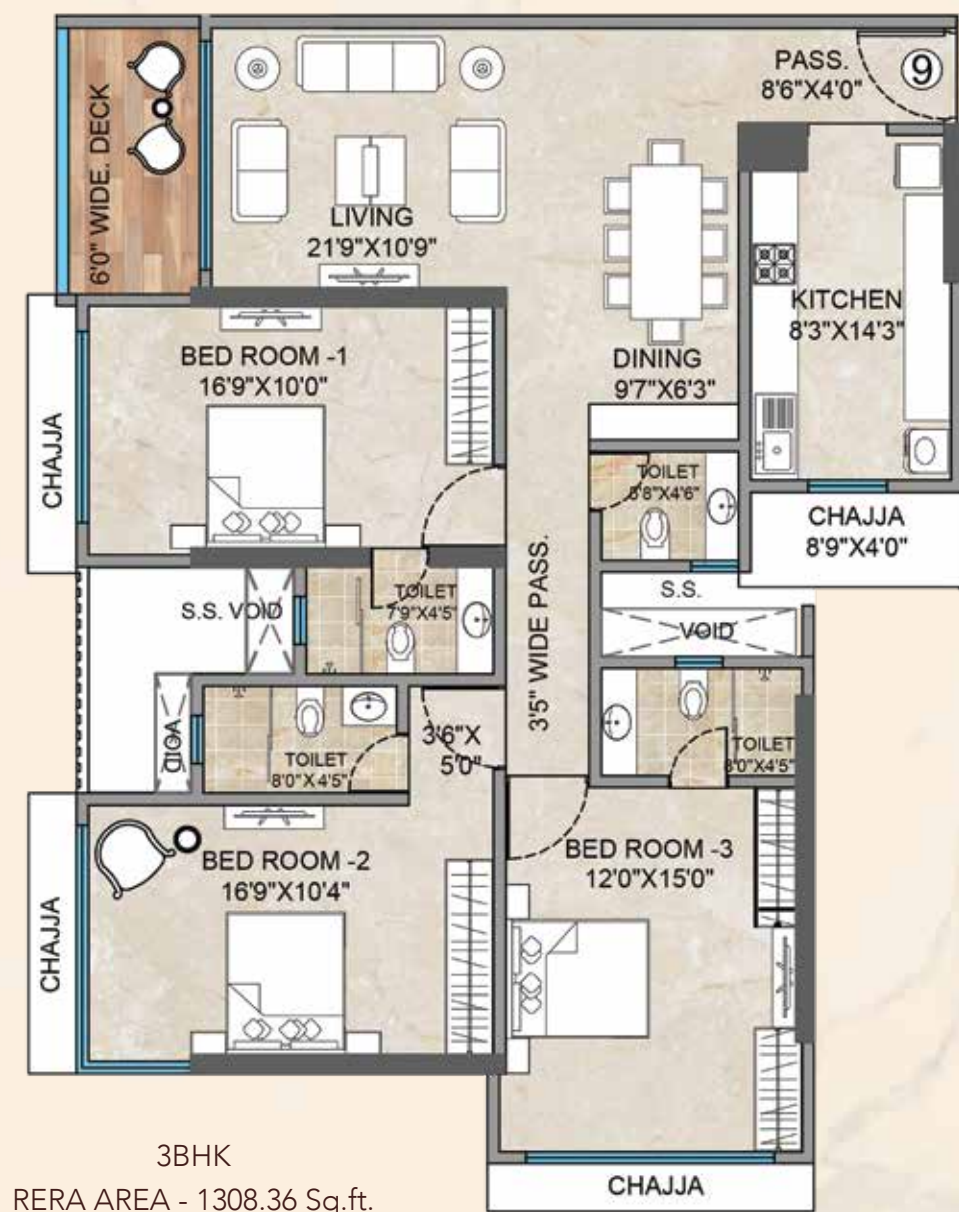


WEST SIDE
TYPICAL FLOOR PLAN
FLAT NO.8



WEST SIDE TYPICAL FLOOR PLAN

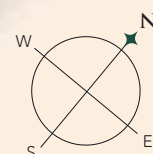
FLAT NO.9



3BHK
RERA AREA - 1308.36 Sq.ft.
Incl. Deck

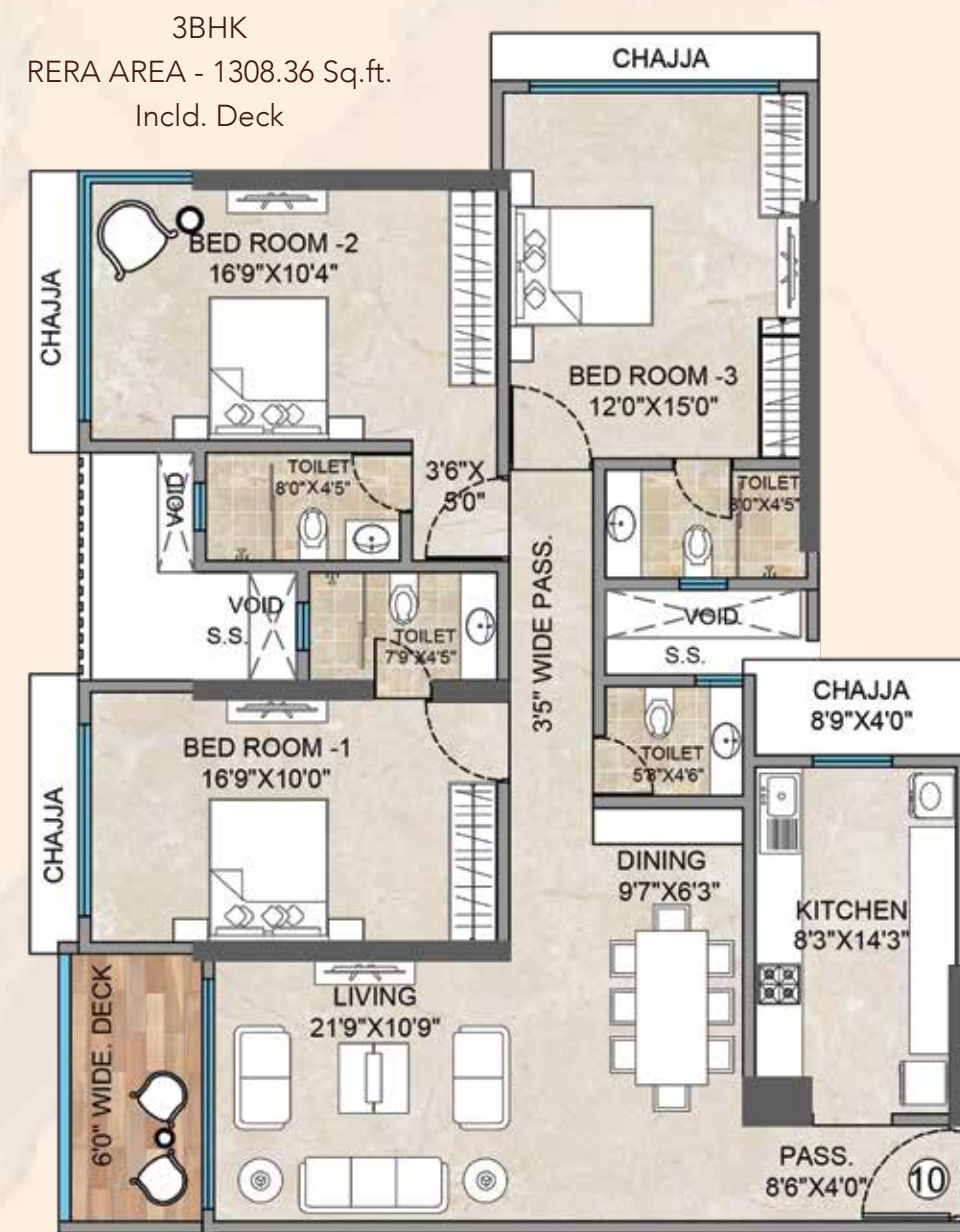


Sale Floor Plan



WEST SIDE TYPICAL FLOOR PLAN

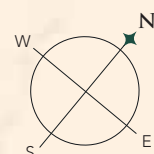
FLAT NO.10



3BHK
RERA AREA - 1308.36 Sq.ft.
Incl. Deck

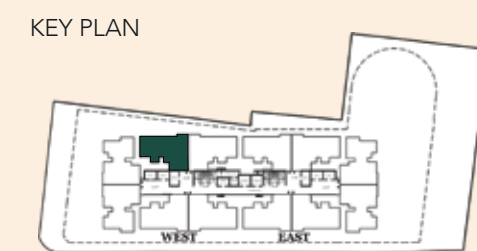


Sale Floor Plan

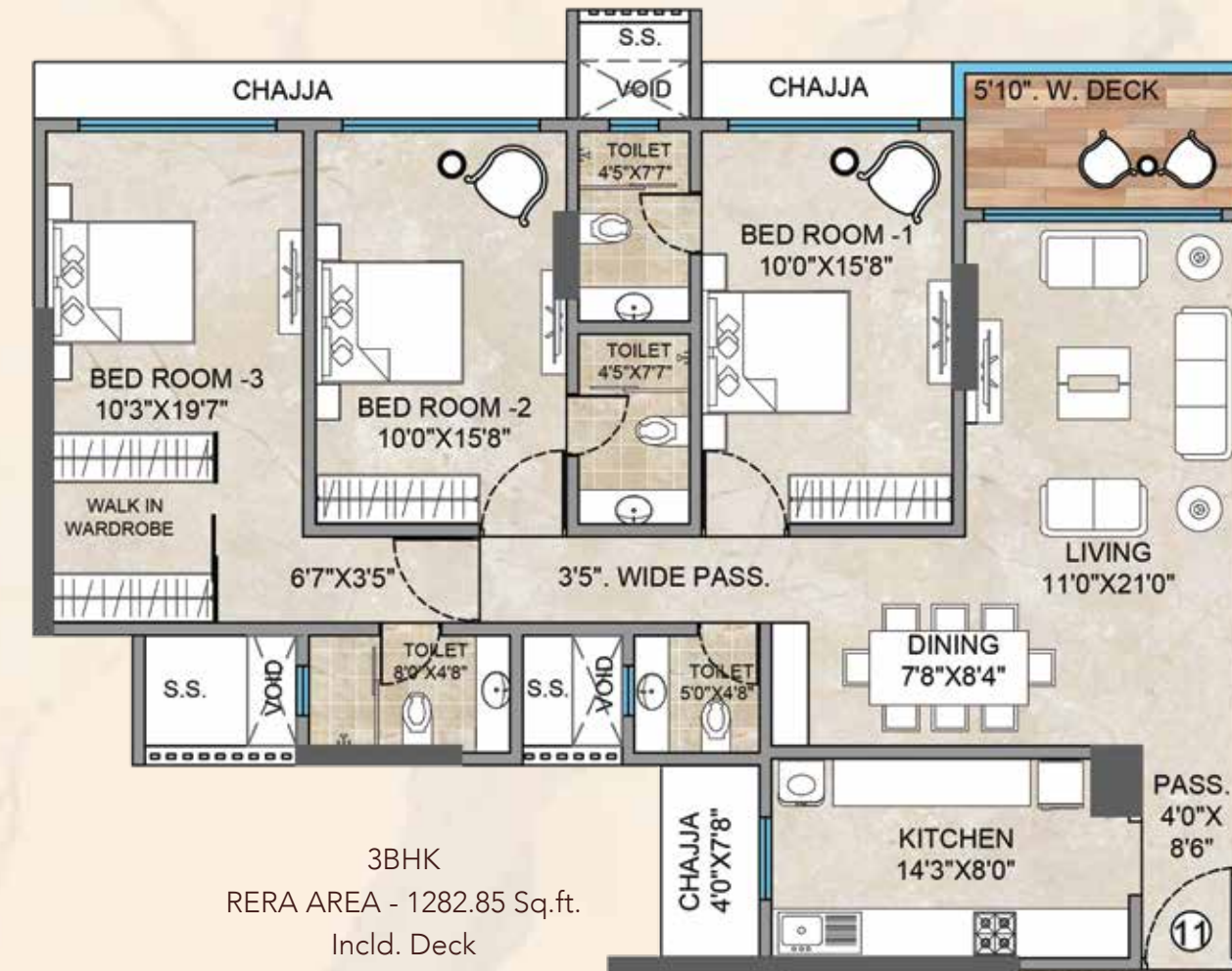


WEST SIDE TYPICAL FLOOR PLAN

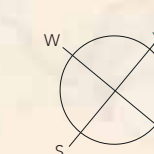
FLAT NO.11



Sale Floor Plan

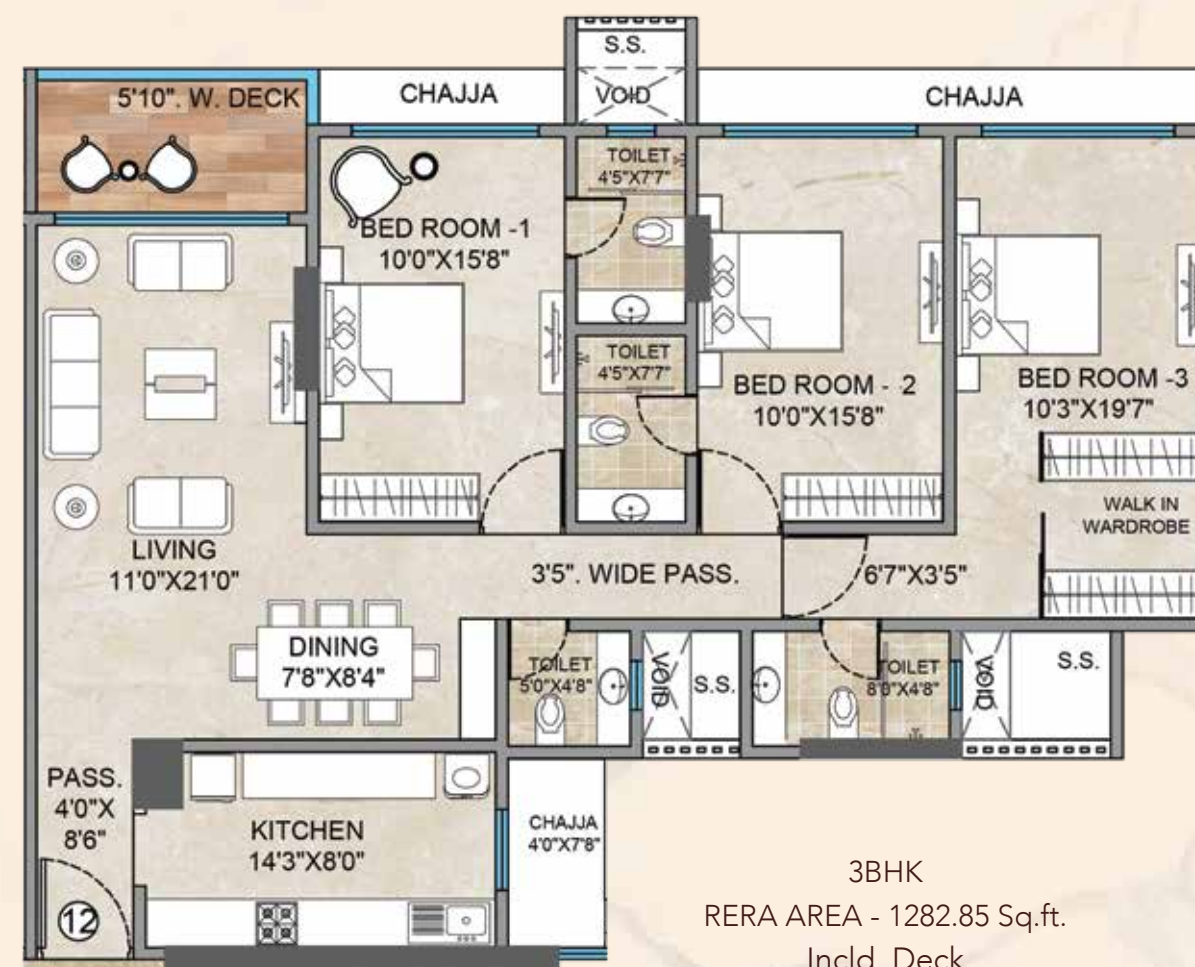


3BHK
RERA AREA - 1282.85 Sq.ft.
Incl. Deck

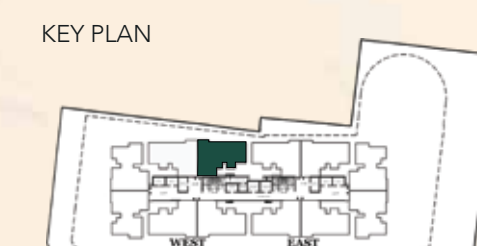


WEST SIDE TYPICAL FLOOR PLAN

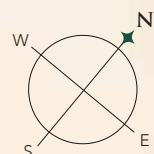
FLAT NO. 12

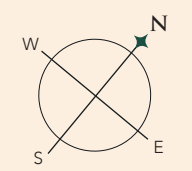
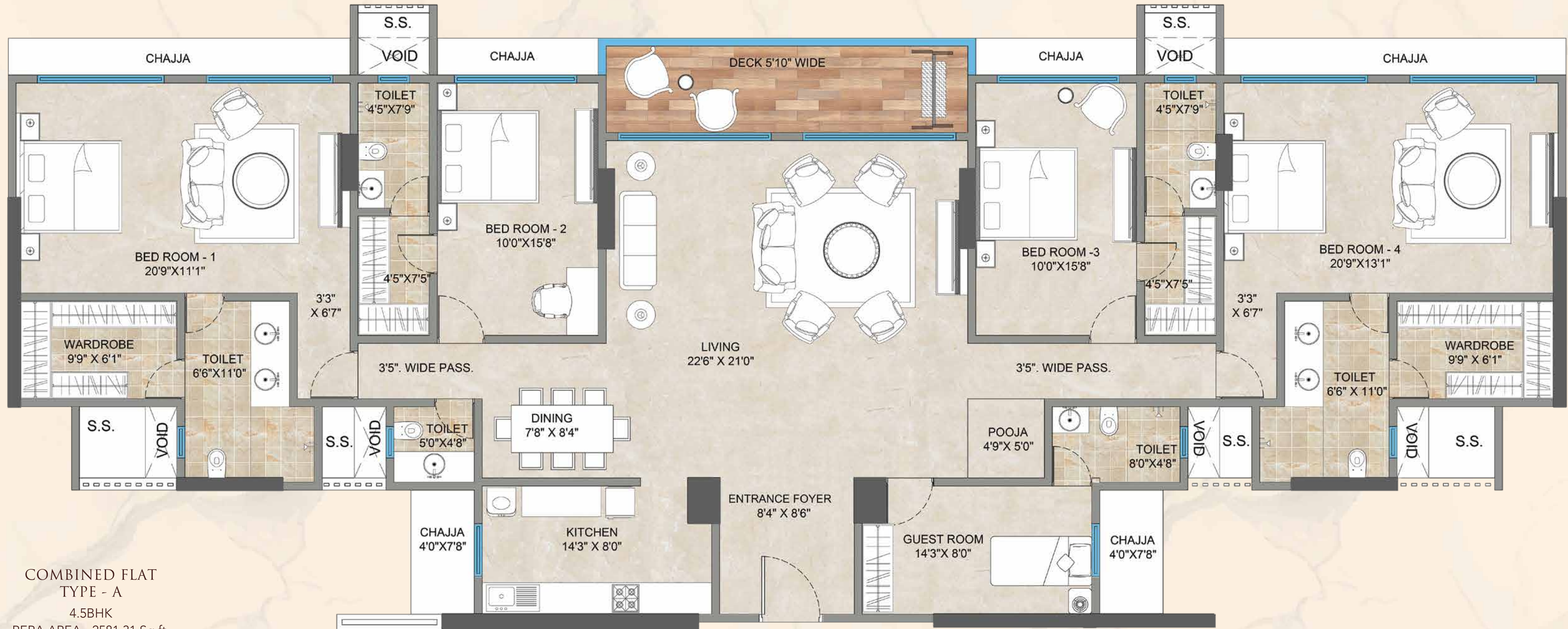


3BHK
RERA AREA - 1282.85 Sq.ft.
Incl. Deck

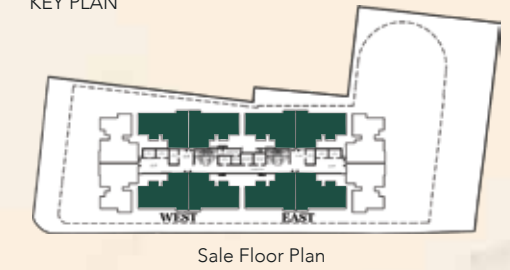


Sale Floor Plan

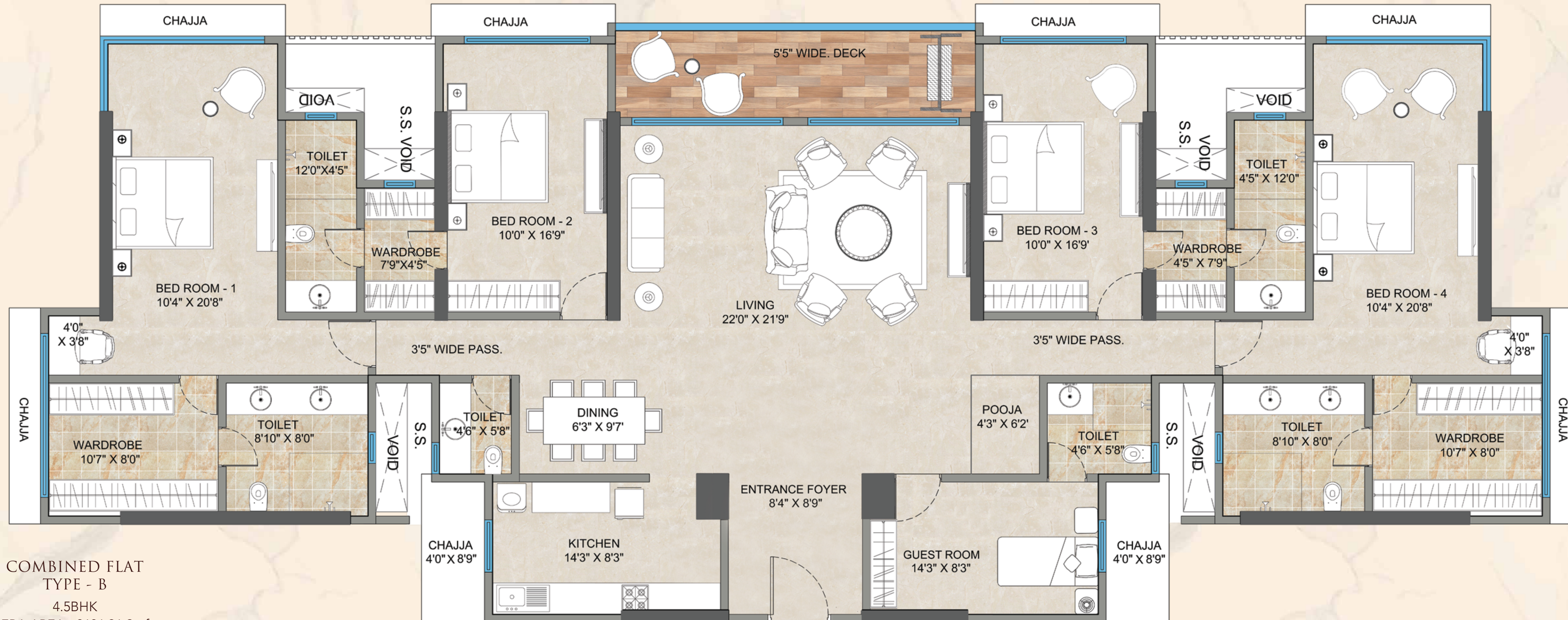




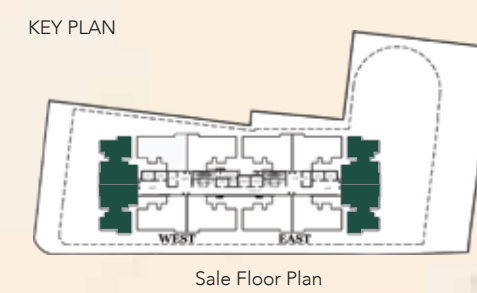
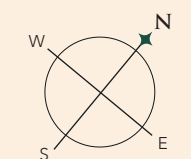
KEY PLAN



**COMBINED FLAT
TYPE - A**
4.5BHK
RERA AREA - 2581.31 Sq.ft.
Incl. Deck

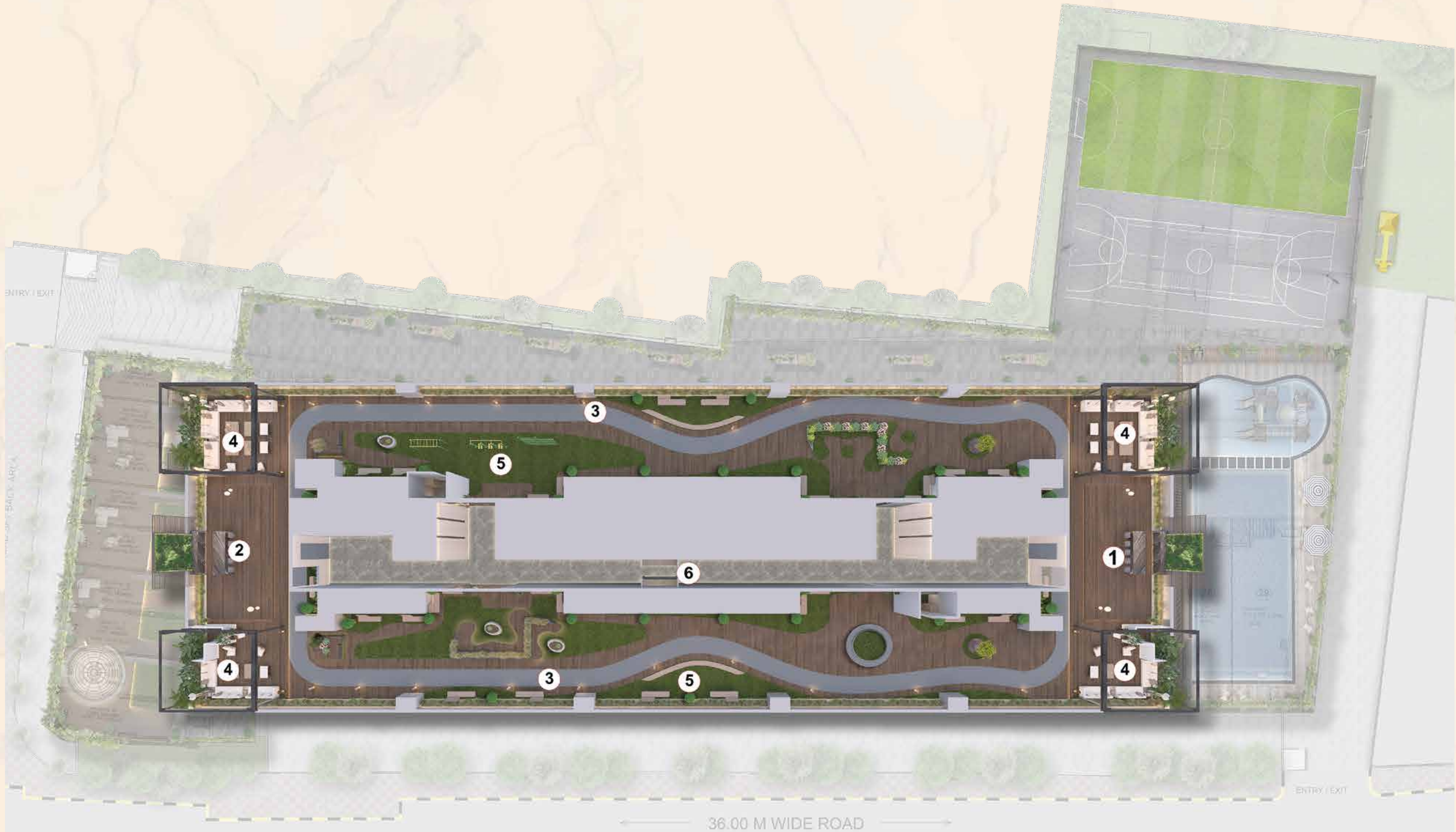


COMBINED FLAT
TYPE - B
 4.5BHK
 RERA AREA - 2636.96 Sq.ft.
 Includ. Deck



TERRACE FLOOR PLAN

- LEGEND:
- 1. Party Lounge
 - 2. Barbeque Area
 - 3. Jogging
 - 4. Gazebo
 - 5. Green Lawn
 - 6. Pantry



A LEGACY BUILT OVER DECADES. *nurtured everyday.*

With a spirit to elevate skylines, we create legendary landmarks that offer thoughtful spaces.

We set the trend with a thought-through vision & commitment to deliver excellence. Our developments entice customers with our state-of-the-art offering-cutting-edge technology and strategic locations. That is why all of our projects are highly successful and sought- after by all.

ONGOING PROJECTS



ARIZE - GOREGAON WEST



JUHU VISTAS - JUHU



ECOVISTAS -
SHILPHATA, MAHAPE

COMPLETED PROJECTS



JUHU-ACROPOLIS



SKYVISTAS - ANDHERI (W)



ASBURY PARK - KANDIVALI (W)



PARKVISTAS - ANDHERI (W)



ECO BUSINESS PARK -
SHIL PHATA, MAHAPE



OPTIMUS - MALAD (W)



25 YEARS
OF BUILDING
TRUST



15 AWARDS
OF
EXCELLENCE



5000+
HAPPY
FAMILIES



22 LAKH
SQ.FT OF
DEVELOPMENTS



