



SIMĀNA

The Urban Oasis

– PAREL –

A LIFE FULL OF
LIMITLESS POSSIBILITIES



A life full of possibilities
Filled with all the necessities
Where every day is magical
And blissfulness is eternal
Where experiences are timeless
Filled with rare indulgences
A life crafted around exclusivity
For you to cherish infinitely.



Bhoomi Group has been building spaces that positively affect people's lives since its inception in 1991. We have specialized in real estate with over 32 years of experience and set new benchmarks with innovation and excellence. The landmarks we build with morals and eco-friendly materials demonstrate our commitment to the cause. We exhibit transparency and diligence in every operation we conduct, making us who we are today as we work to reach our vision of success.



32+
Years in
Industry



50+
Number
of Projects



15K+
Happy
Homes



1Cr.+
Sq. Ft.
Area Built

Limitless Vistas

FEEL LIKE YOU ARE ABOVE EVERYONE ELSE HERE





Limitless Splendor

A WORLD OF OPULENCE AWAITS
TO ENHANCE YOUR SPECIAL OCCASIONS



ARTISTIC IMPRESSION


SIMĀNA
The Urban Oasis
— PAREL —

Limitless Perfection

SKY-TOWERING GLORY THAT
LEAVES YOU AWESTRUCK



Limitless Stature

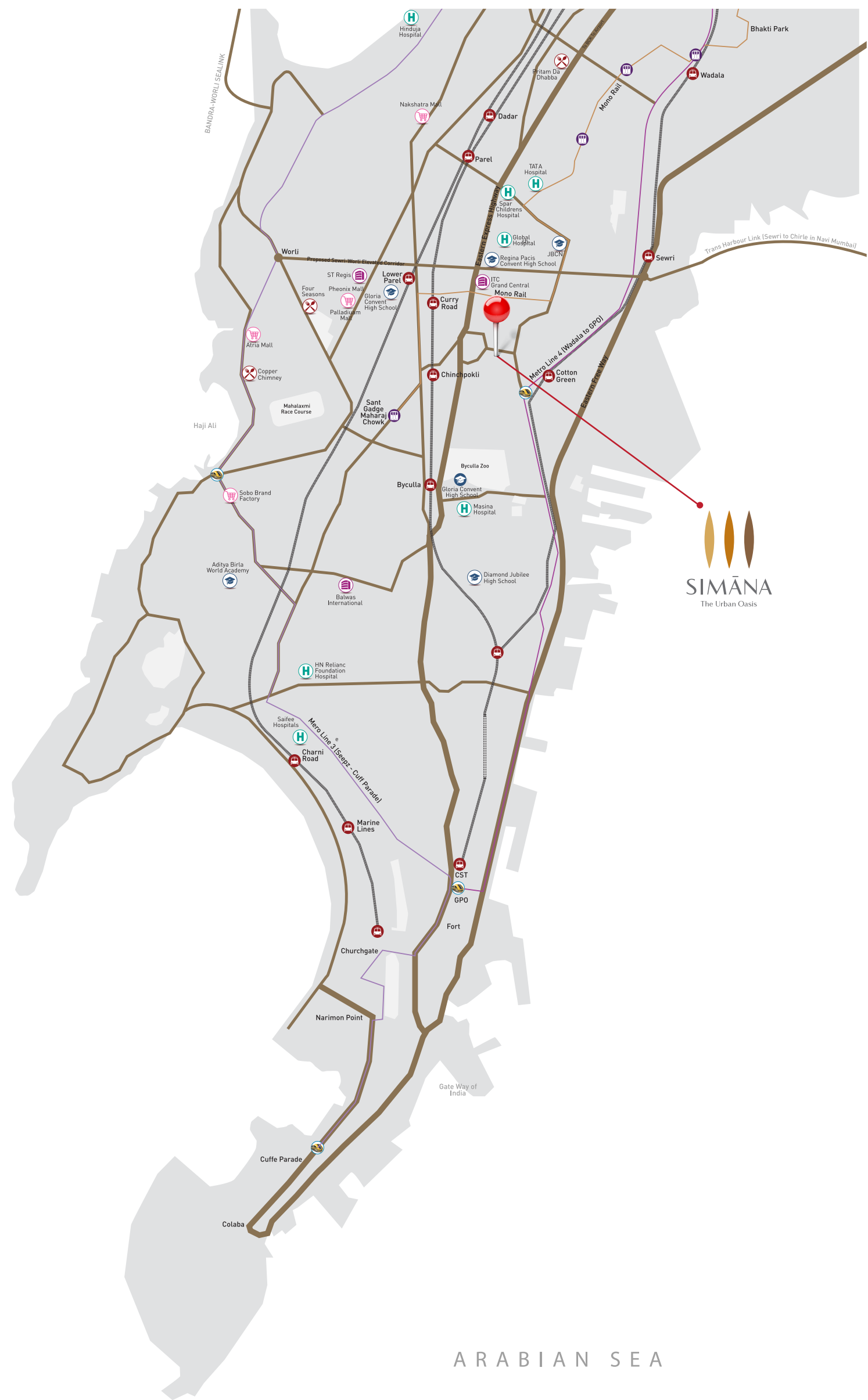
BEHOLD AN EXPERIENTIAL WAY OF LIFE

PODIUM LAYOUT & AMENITIES



LEGENDS

- | | | | |
|---------------------|--------------------------|--------------------|-------------------------|
| 1 Yoga / meditation | 5 Multipurpose open lawn | 9 Coffee shop | 13 Toddler's play area |
| 2 Reflecting pool | 6 Kid's pool | 10 Club house | 14 Future development |
| 3 Sculpture garden | 7 Deck area | 11 Play lawn | 15 Proposed jain temple |
| 4 Main pool | 8 Fitness / outdoor gym | 12 Kid's play area | |



A LIFE OF COMFORT AND CONVENIENCE



KEY LANDMARKS

| | | | |
|-----------------|--------|--------------------------------------|--------|
| Byculla Zoo | 1.3 KM | Mahalaxmi Race course | 3.5 KM |
| Lower Parel | 1.4 KM | Chhatrapati Shivaji Maharaj Terminus | 5.5 KM |
| Eastern Freeway | 3.2 KM | | |



SHOPPING

| | | | |
|--------------------|--------|-----------------------|--------|
| Phoenix Mall | 1.7 KM | IKEA Worli City Store | 3.5 KM |
| Palladium Mall | 1.7 KM | Atria Mall | 4.0 KM |
| SoBo Brand Factory | 3.2 KM | | |



HOSPITAL

| | | | |
|---------------------------|--------|----------------------------------|--------|
| KEM Hospital | 1.5 KM | Masina Hospital | 1.7 KM |
| Sparsh Childrens Hospital | 1.5 KM | HN Reliance Foundation Hospitals | 4.0 KM |
| Tata Memorial Hospital | 1.7 KM | | |



SCHOOL

| | | | |
|---------------------------------|--------|---------------------------------------|--------|
| JBCN | 1.2 KM | Diamond Jubilee High School | 2.7 KM |
| Regina Pacis Convent | 1.8 KM | Aditya Birla World Academy | 3.6 KM |
| Holy Cross International School | 1.8 KM | Bombay Scottish School | 5.0 KM |
| Gloria Convent High School | 2.1 KM | Dhirubhai Ambani International School | 8.2 KM |



HOTELS & RESTAURANTS

| | | | |
|-------------------|--------|------------------|--------|
| ITC Grand Central | 1.0 KM | Firki | 1.5 KM |
| St. Regis | 1.6 KM | Bhagat Tarachand | 6.2 KM |
| Four Seasons | 2.1 KM | Cafe Madras | 4.3 KM |





Limitless Serenity

WHERE LUXURY AND REJUVENATION BECOME A DAILY HABIT





Limitless Potential

A VIBRANT DESTINATION WITH MODERN LIVING AT ITS FINEST





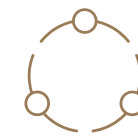
2,3,4 & 5 BHK LUXURY HOMES



BEAUTIFULLY CRAFTED TOWERS



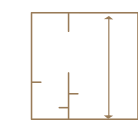
LOCATED IN THE
HEART OF SOUTH MUMBAI



ULTRA MODERN AMENITIES



MESMERIZING VIEW OF THE ARABIAN SEA

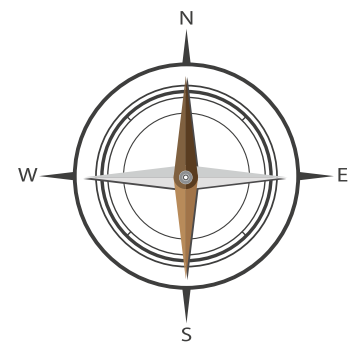


FLOOR TO FLOOR HEIGHT OF 11.8 FEET

THE INCOMPARABLE EASTERN HARBOUR VIEW,
ONLY FOR THE FEW.



TYPICAL FLOOR PLAN



2 BHK PREMIUM



3 BHK SMART



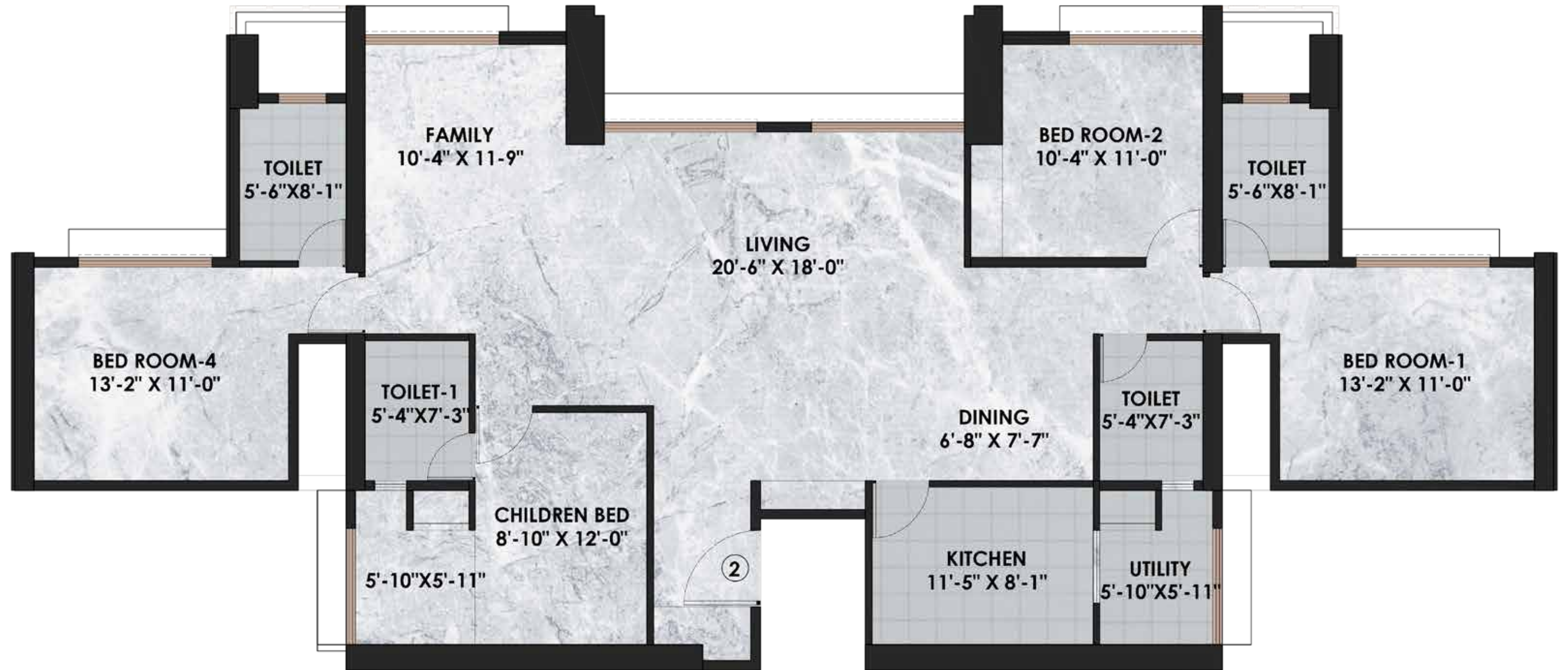
3 BHK GRAND



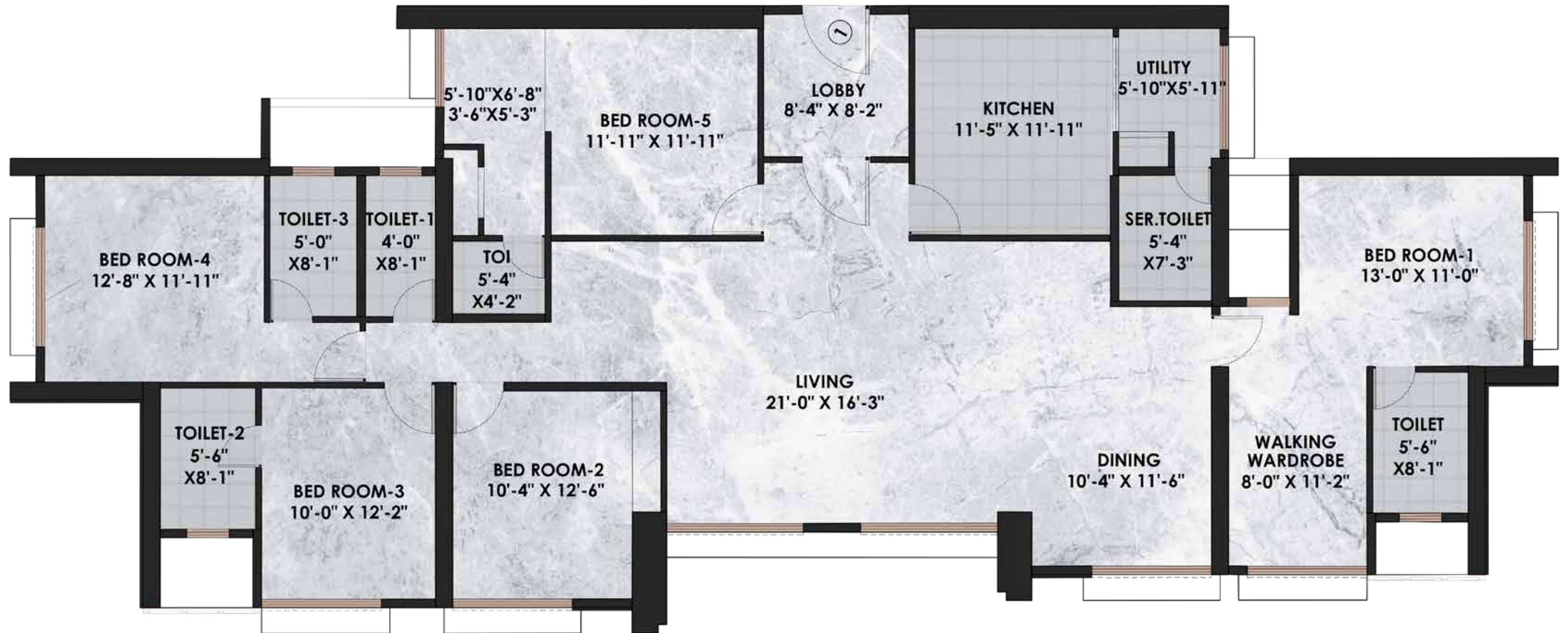
3 BHK LARGE



4 BHK SUPERIOR



5 BHK SUPREME





**SIMĀNA is a place where 'excess'
is a way of life.**

Nestled in the centrally located hub of Parel, is this magnificent landmark.

Three towers, smartly designed for breathtaking views, set higher standards of luxury living.

Thoughtfully designed homes with ample open spaces, waiting to welcome you to a life worthy of who you are.

Amidst south mumbai's rapid infrastructure development, this landmark address is one of the most valuable upgrades.

EXPLORE THE LIMITLESS YOU!

KEY ASSOCIATES

Architect

**Architect
Hafeez
Contractor**

Landscape Architect

**TLS
MALAYSIA**

Constructions Partners



Structural Consultant



Green Building Certification



Liasoning Partner

