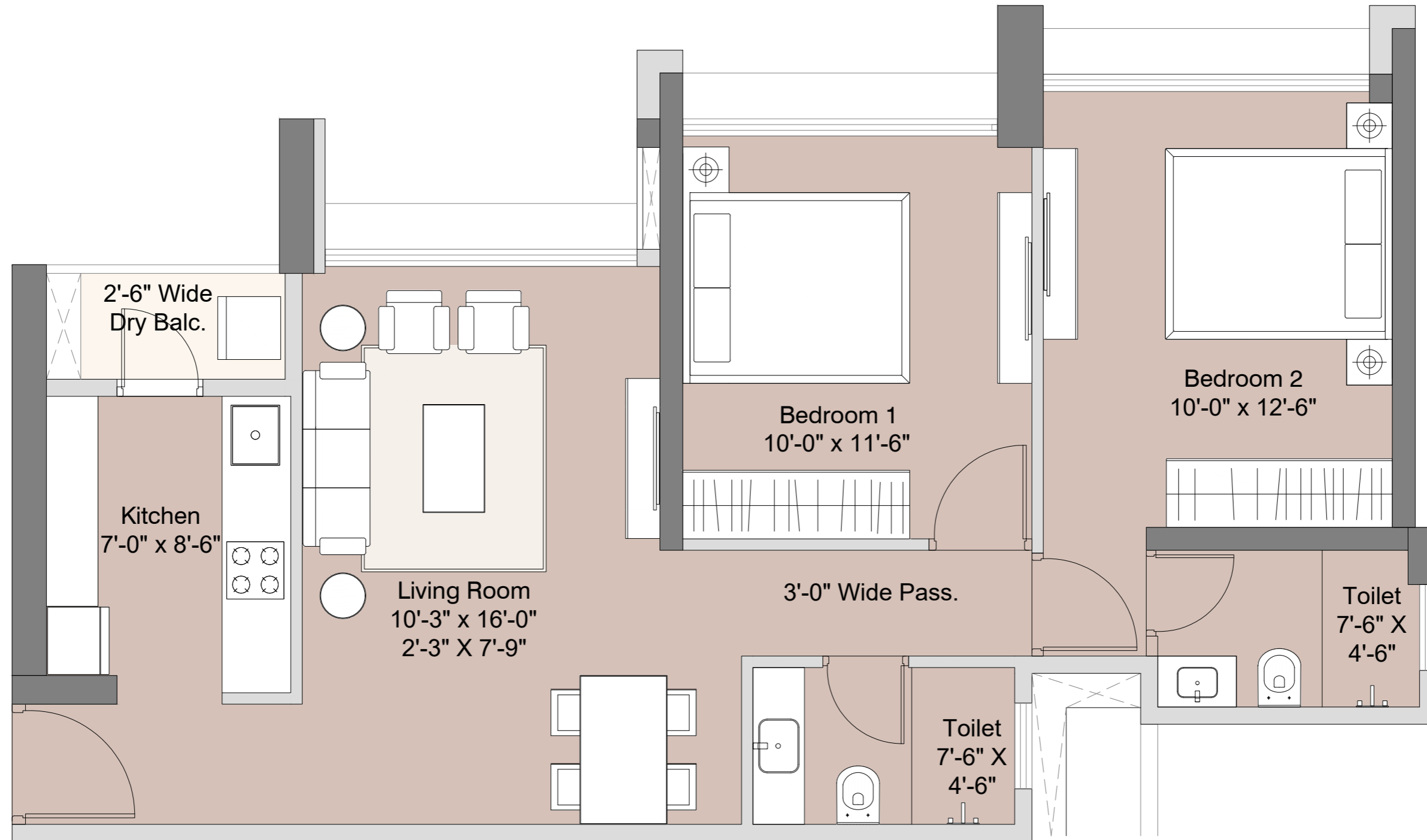


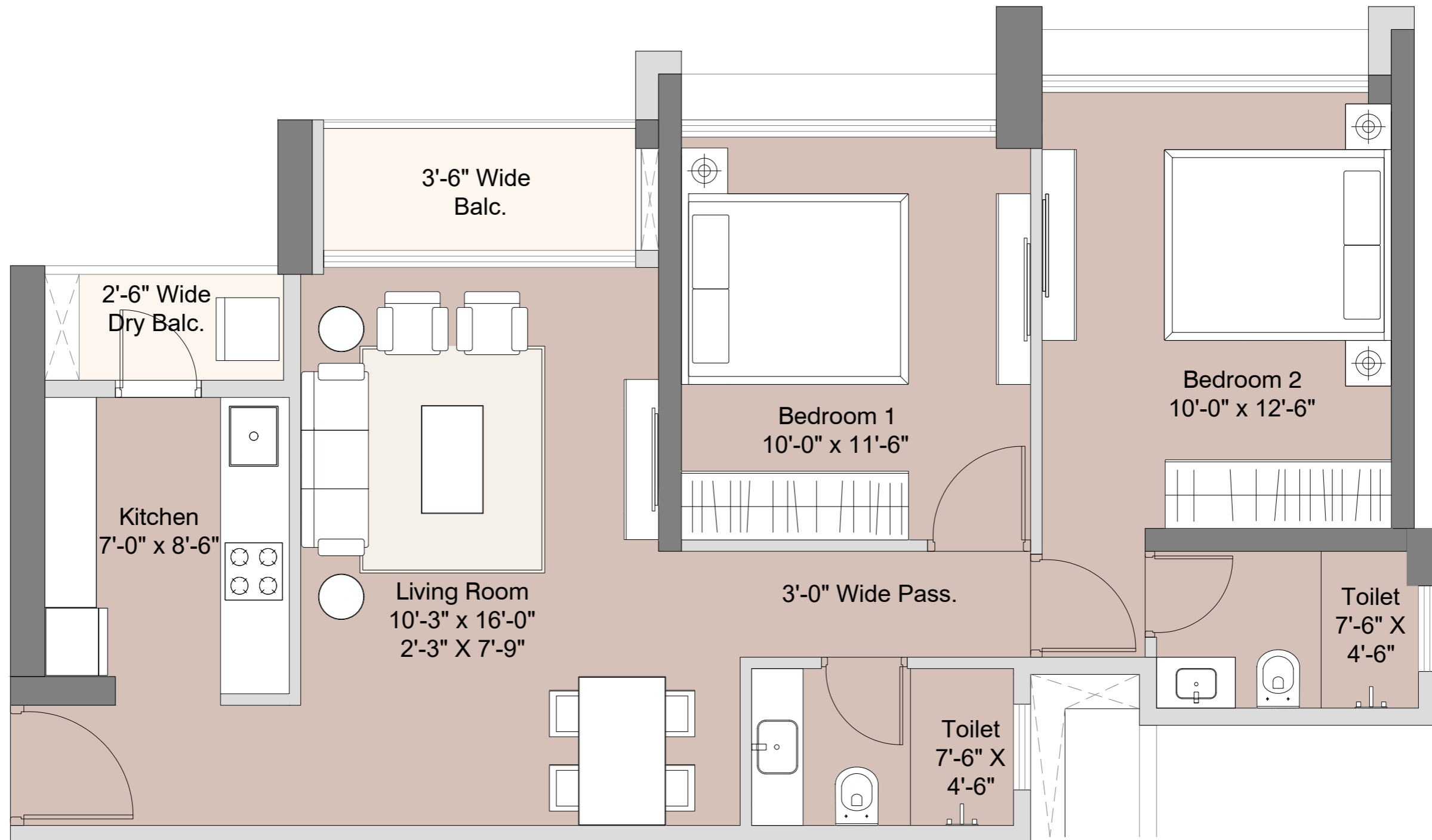
Sunteck
Sky Park



2 BHK = 665.4 SQ.FT

MAHARERA NO.: P51700050167 | P51700050166. Details available at <https://maharera.mahaonline.gov.in>

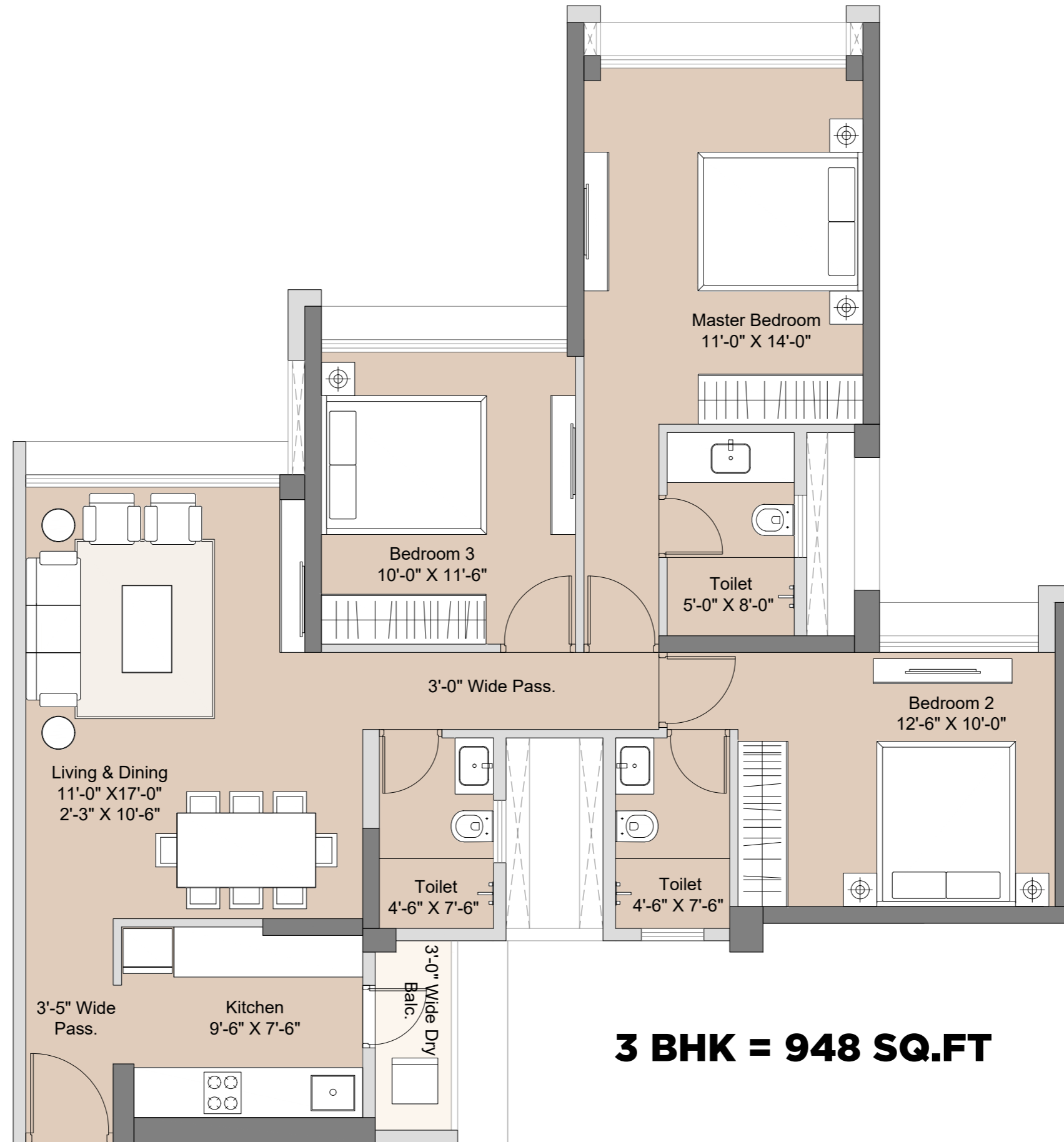
The plans, designs, and dimensions are as per current sanctioned plans and approvals. Specifications, amenities, and facilities will be as set out in the agreement for sale as will be uploaded on the RERA website (<https://maharera.mahaonline.gov.in>) under Registration No. P51700050167 | P51700050166. The same may be subject to modification/change/ revision/alteration in terms of approvals, orders, directions and/or regulations of the concerned/relevant authorities, and/or for compliance with laws/regulations in force from time to time and/or in line with our customer policies we may modify/alter the above by following due procedure as prescribed under the Real Estate (Regulation and Development) Act, 2016, ("RERA") read with the provisions of the Maharashtra Real Estate (Regulation and Development) (Registration of real estate projects, Registration of real estate agents, rates of interest and disclosures on website) Rules, 2017 and the Rules and Regulations framed under RERA for Maharashtra ("RERA Rules"). The future development (mixed use, including commercial, office and/or retail) as shown in the layout are proposed and are subject to modification and change as per the approval of competent authorities. Hospital reservation, is being planned and being developed in the adjacent plot, as per Accommodation & Reservation policy (AR Policy) under applicable development control Regulation/s and/ or applicable law/s. In addition, further plots in the larger layout, earmarked for reservation may be acquired which shall be developed under the AR policy. Certain portion of land is affected by reservation. In order to make the optimum use of hospital reservation development, process for acquisition of reserved portion of land parcels is on, which would also be part of AR Policy.



2 BHK = 702 SQ.FT

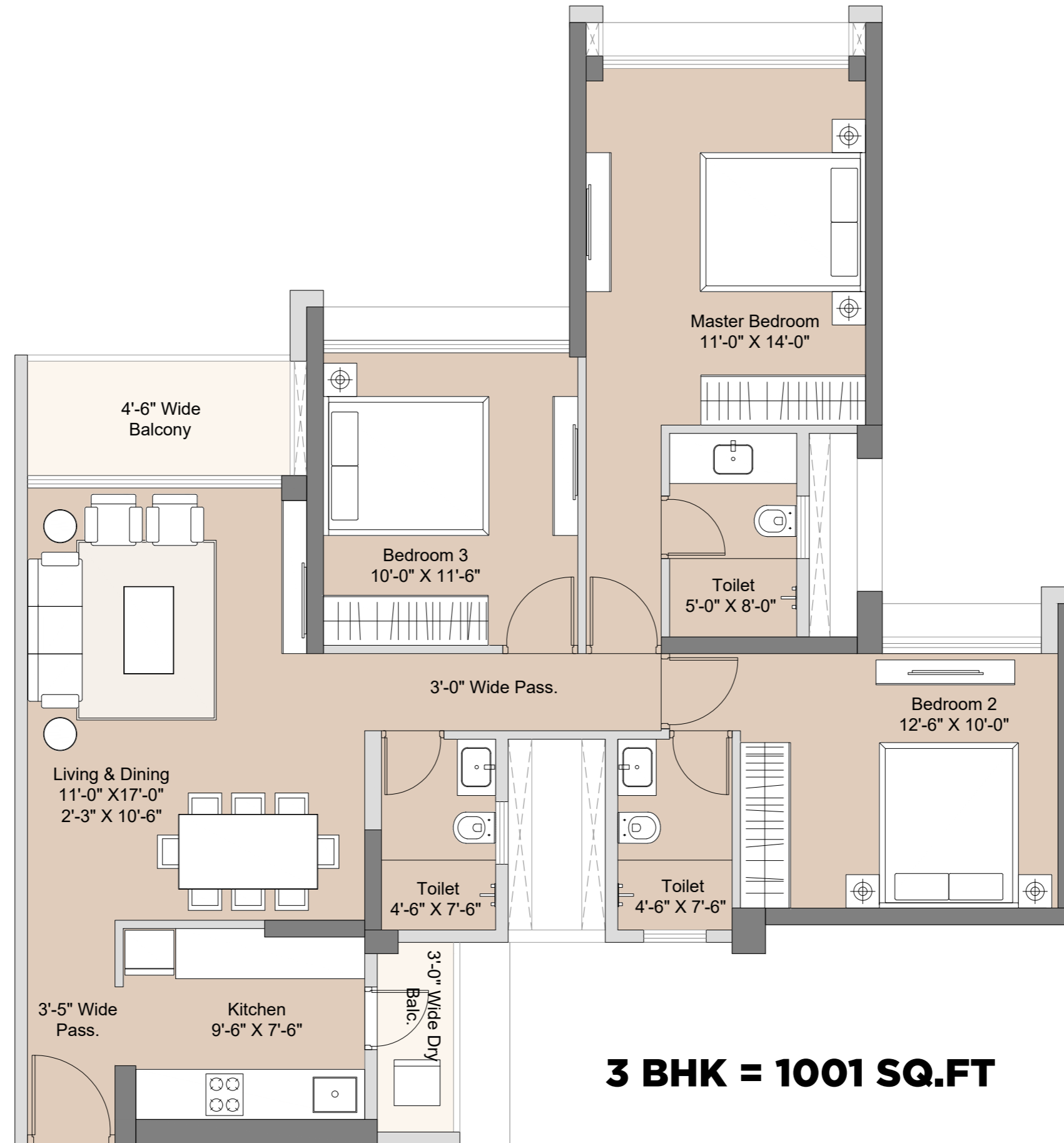
MAHARERA NO.: P51700050167 | P51700050166. Details available at <https://maharera.mahaonline.gov.in>

The plans, designs, and dimensions are as per current sanctioned plans and approvals. Specifications, amenities, and facilities will be as set out in the agreement for sale as will be uploaded on the RERA website (<https://maharera.mahaonline.gov.in>) under Registration No. P51700050167 | P51700050166. The same may be subject to modification/change/ revision/alteration in terms of approvals, orders, directions and/or regulations of the concerned/relevant authorities, and/or for compliance with laws/regulations in force from time to time and/or in line with our customer policies we may modify/alter the above by following due procedure as prescribed under the Real Estate (Regulation and Development) Act, 2016, ("RERA") read with the provisions of the Maharashtra Real Estate (Regulation and Development) (Registration of real estate projects, Registration of real estate agents, rates of interest and disclosures on website) Rules, 2017 and the Rules and Regulations framed under RERA for Maharashtra ("RERA Rules"). The future development (mixed use, including commercial, office and/or retail) as shown in the layout are proposed and are subject to modification and change as per the approval of competent authorities. Hospital reservation, is being planned and being developed in the adjacent plot, as per Accommodation & Reservation policy (AR Policy) under applicable development control Regulation/s and/ or applicable law/s. In addition, further plots in the larger layout, earmarked for reservation may be acquired which shall be developed under the AR policy. Certain portion of land is affected by reservation. In order to make the optimum use of hospital reservation development, process for acquisition of reserved portion of land parcels is on, which would also be part of AR Policy.



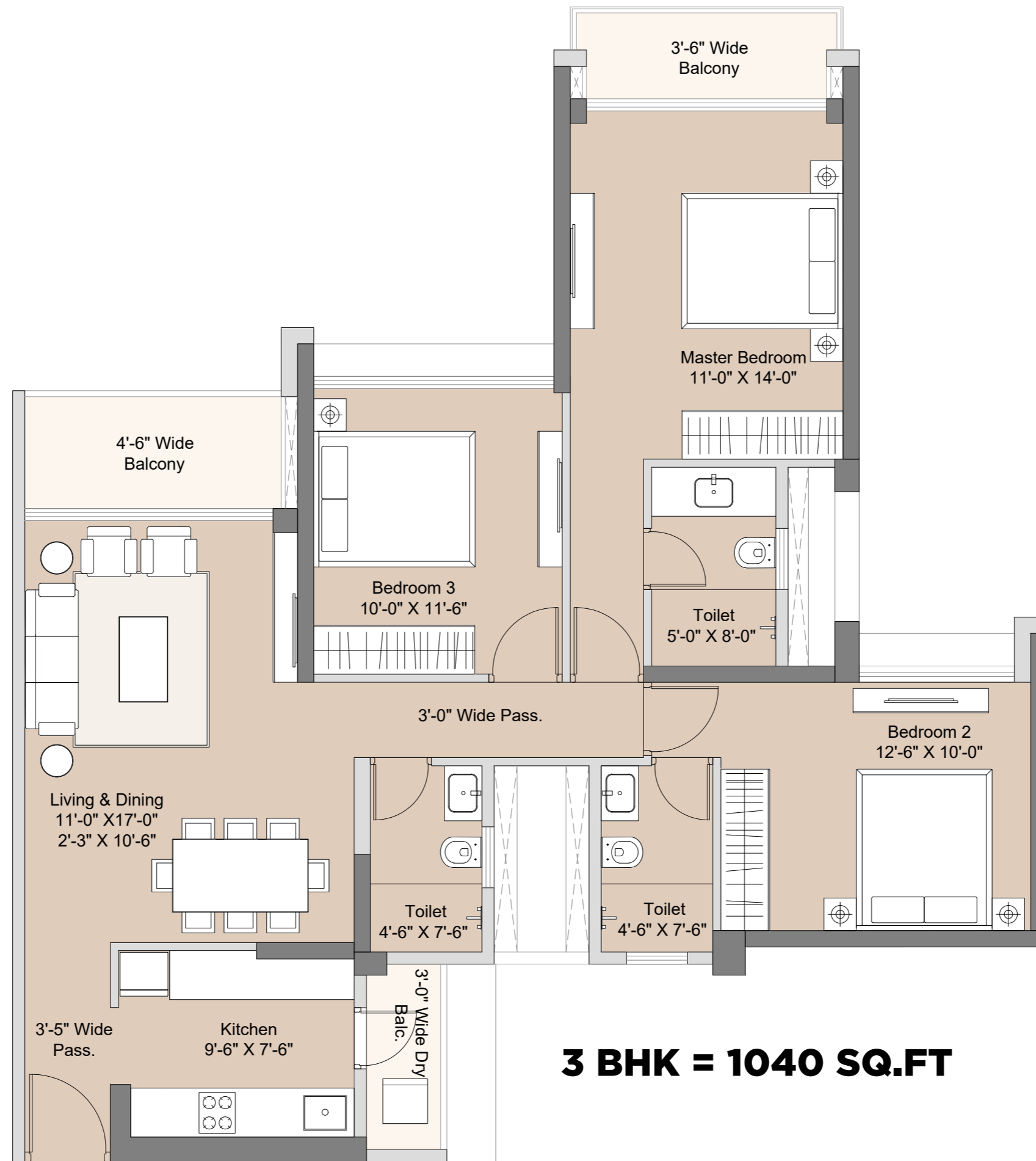
MAHARERA NO.: P51700050167 | P51700050166. Details available at <https://maharera.mahaonline.gov.in>

The plans, designs, and dimensions are as per current sanctioned plans and approvals. Specifications, amenities, and facilities will be as set out in the agreement for sale as will be uploaded on the RERA website (<https://maharera.mahaonline.gov.in>) under Registration No. P51700050167 | P51700050166. The same may be subject to modification/change/ revision/alteration in terms of approvals, orders, directions and/or regulations of the concerned/relevant authorities, and/or for compliance with laws/regulations in force from time to time and/or in line with our customer policies we may modify/alter the above by following due procedure as prescribed under the Real Estate (Regulation and Development) Act, 2016, ("RERA") read with the provisions of the Maharashtra Real Estate (Regulation and Development) (Registration of real estate projects, Registration of real estate agents, rates of interest and disclosures on website) Rules, 2017 and the Rules and Regulations framed under RERA for Maharashtra ("RERA Rules"). The future development (mixed use, including commercial, office and/or retail) as shown in the layout are proposed and are subject to modification and change as per the approval of competent authorities. Hospital reservation, is being planned and being developed in the adjacent plot, as per Accommodation & Reservation policy (AR Policy) under applicable development control Regulation/s and/ or applicable law/s. In addition, further plots in the larger layout, earmarked for reservation may be acquired which shall be developed under the AR policy. Certain portion of land is affected by reservation. In order to make the optimum use of hospital reservation development, process for acquisition of reserved portion of land parcels is on, which would also be part of AR Policy.



MAHARERA NO.: P51700050167 | P51700050166. Details available at <https://maharera.mahaonline.gov.in>

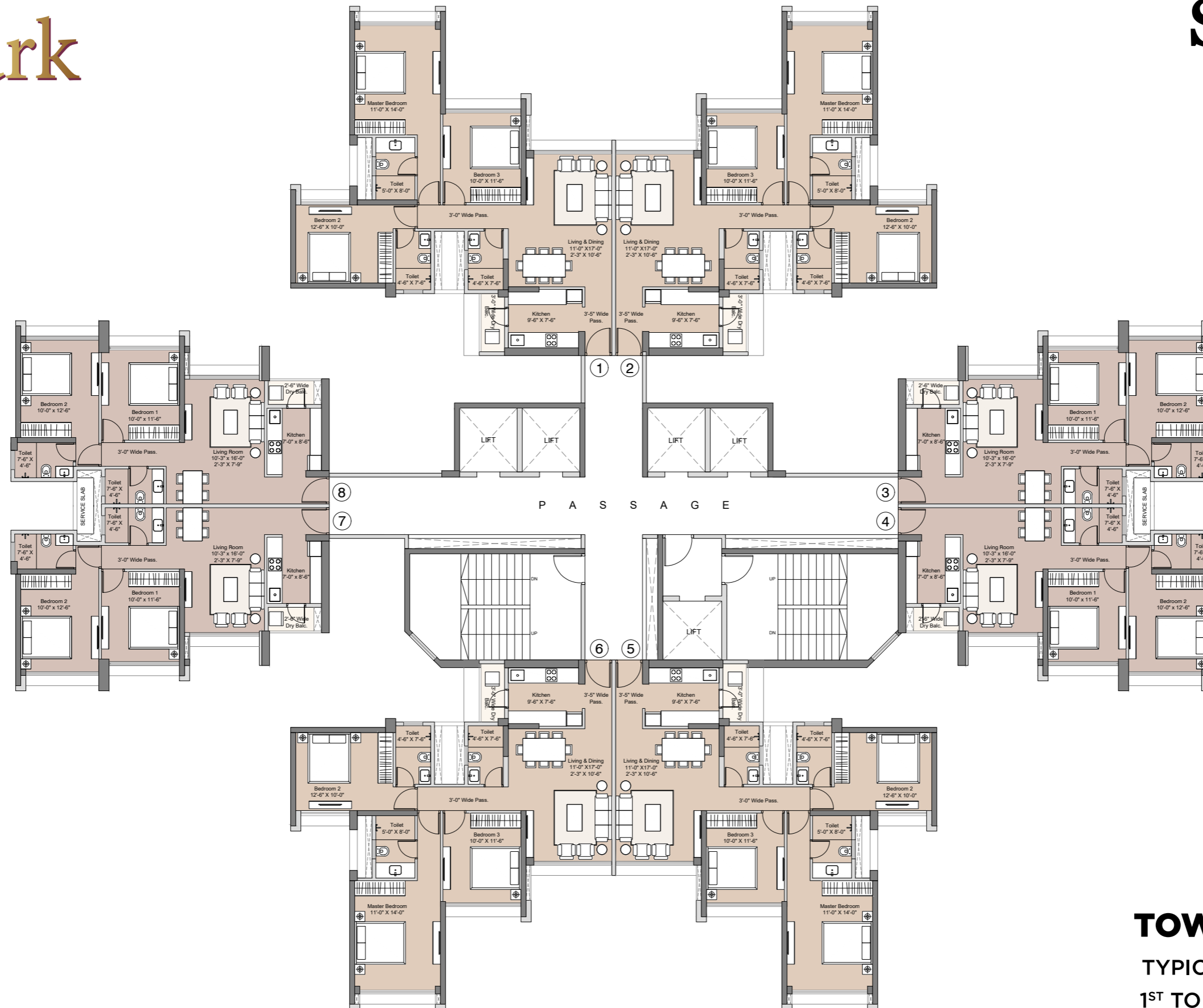
The plans, designs, and dimensions are as per current sanctioned plans and approvals. Specifications, amenities, and facilities will be as set out in the agreement for sale as will be uploaded on the RERA website (<https://maharera.mahaonline.gov.in>) under Registration No. P51700050167 | P51700050166. The same may be subject to modification/change/ revision/alteration in terms of approvals, orders, directions and/or regulations of the concerned/relevant authorities, and/or for compliance with laws/regulations in force from time to time and/or in line with our customer policies we may modify/alter the above by following due procedure as prescribed under the Real Estate (Regulation and Development) Act, 2016, ("RERA") read with the provisions of the Maharashtra Real Estate (Regulation and Development) (Registration of real estate projects, Registration of real estate agents, rates of interest and disclosures on website) Rules, 2017 and the Rules and Regulations framed under RERA for Maharashtra ("RERA Rules"). The future development (mixed use, including commercial, office and/or retail) as shown in the layout are proposed and are subject to modification and change as per the approval of competent authorities. Hospital reservation, is being planned and being developed in the adjacent plot, as per Accommodation & Reservation policy (AR Policy) under applicable development control Regulation/s and/ or applicable law/s. In addition, further plots in the larger layout, earmarked for reservation may be acquired which shall be developed under the AR policy. Certain portion of land is affected by reservation. In order to make the optimum use of hospital reservation development, process for acquisition of reserved portion of land parcels is on, which would also be part of AR Policy.



3 BHK = 1040 SQ.FT

MAHARERA NO.: P51700050167 | P51700050166. Details available at <https://maharera.mahaonline.gov.in>

The plans, designs, and dimensions are as per current sanctioned plans and approvals. Specifications, amenities, and facilities will be as set out in the agreement for sale as will be uploaded on the RERA website (<https://maharera.mahaonline.gov.in>) under Registration No. P51700050167 | P51700050166. The same may be subject to modification/change/ revision/alteration in terms of approvals, orders, directions and/or regulations of the concerned/relevant authorities, and/or for compliance with laws/regulations in force from time to time and/or in line with our customer policies we may modify/alter the above by following due procedure as prescribed under the Real Estate (Regulation and Development) Act, 2016, ("RERA") read with the provisions of the Maharashtra Real Estate (Regulation and Development) (Registration of real estate projects, Registration of real estate agents, rates of interest and disclosures on website) Rules, 2017 and the Rules and Regulations framed under RERA for Maharashtra ("RERA Rules"). The future development (mixed use, including commercial, office and/or retail) as shown in the layout are proposed and are subject to modification and change as per the approval of competent authorities. Hospital reservation, is being planned and being developed in the adjacent plot, as per Accommodation & Reservation policy (AR Policy) under applicable development control Regulation/s and/ or applicable law/s. In addition, further plots in the larger layout, earmarked for reservation may be acquired which shall be developed under the AR policy. Certain portion of land is affected by reservation. In order to make the optimum use of hospital reservation development, process for acquisition of reserved portion of land parcels is on, which would also be part of AR Policy.



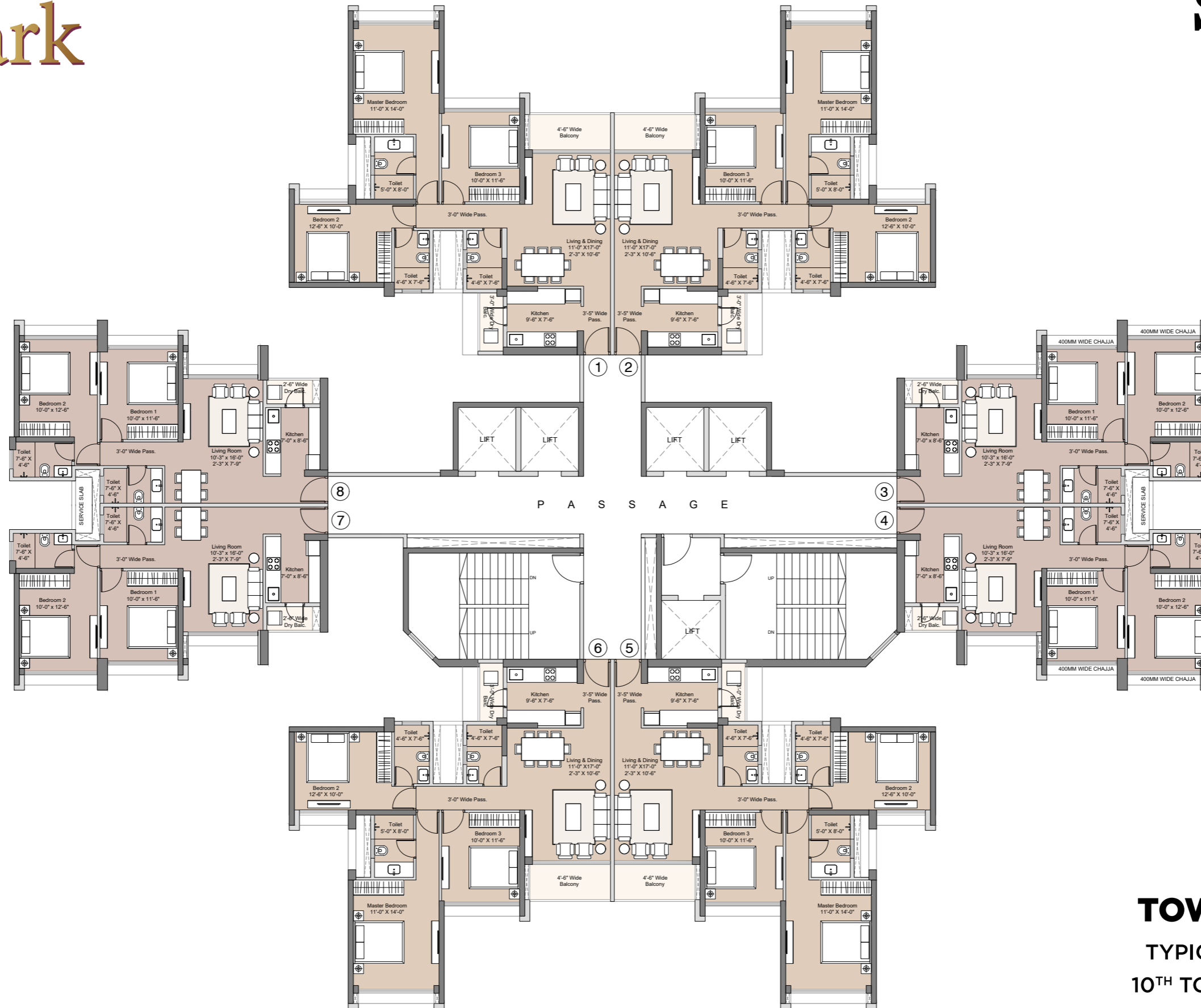
TOWERS - 1 & 2

TYPICAL FLOOR PLAN

1ST TO 9TH FLOOR PLAN

MAHARERA NO.: P51700050167 | P51700050166. Details available at <https://maharera.mahaonline.gov.in>

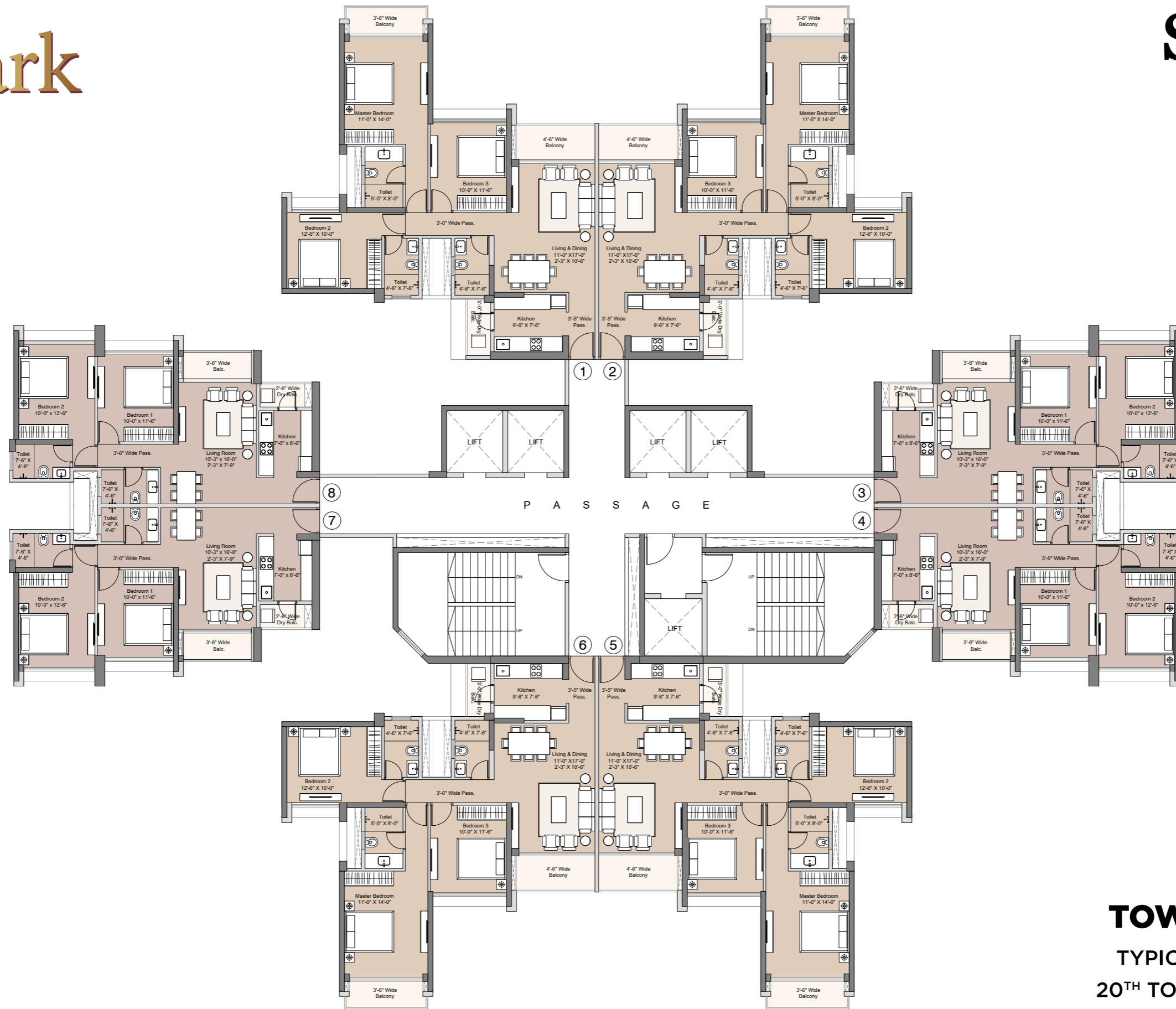
The plans, designs, and dimensions are as per current sanctioned plans and approvals. Specifications, amenities, and facilities will be as set out in the agreement for sale as will be uploaded on the RERA website (<https://maharera.mahaonline.gov.in>) under Registration No. P51700050167 | P51700050166. The same may be subject to modification/change/ revision/alteration in terms of approvals, orders, directions and/or regulations of the concerned/relevant authorities, and/or for compliance with laws/regulations in force from time to time and/or in line with our customer policies we may modify/alter the above by following due procedure as prescribed under the Real Estate (Regulation and Development) Act, 2016, ("RERA") read with the provisions of the Maharashtra Real Estate (Regulation and Development) (Registration of real estate projects, Registration of real estate agents, rates of interest and disclosures on website) Rules, 2017 and the Rules and Regulations framed under RERA for Maharashtra ("RERA Rules"). The future development (mixed use, including commercial, office and/or retail) as shown in the layout are proposed and are subject to modification and change as per the approval of competent authorities. Hospital reservation, is being planned and being developed in the adjacent plot, as per Accommodation & Reservation policy (AR Policy) under applicable development control Regulation/s and/ or applicable law/s. In addition, further plots in the larger layout, earmarked for reservation may be acquired which shall be developed under the AR policy. Certain portion of land is affected by reservation. In order to make the optimum use of hospital reservation development, process for acquisition of reserved portion of land parcels is on, which would also be part of AR Policy.



TOWERS - 1 & 2 TYPICAL FLOOR PLAN 10TH TO 19TH FLOOR PLAN

MAHARERA NO.: P51700050167 | P51700050166. Details available at <https://maharera.mahaonline.gov.in>

The plans, designs, and dimensions are as per current sanctioned plans and approvals. Specifications, amenities, and facilities will be as set out in the agreement for sale as will be uploaded on the RERA website (<https://maharera.mahaonline.gov.in>) under Registration No. P51700050167 | P51700050166. The same may be subject to modification/change/ revision/alteration in terms of approvals, orders, directions and/or regulations of the concerned/relevant authorities, and/or for compliance with laws/regulations in force from time to time and/or in line with our customer policies we may modify/alter the above by following due procedure as prescribed under the Real Estate (Regulation and Development) Act, 2016, ("RERA") read with the provisions of the Maharashtra Real Estate (Regulation and Development) (Registration of real estate projects, Registration of real estate agents, rates of interest and disclosures on website) Rules, 2017 and the Rules and Regulations framed under RERA for Maharashtra ("RERA Rules"). The future development (mixed use, including commercial, office and/or retail) as shown in the layout are proposed and are subject to modification and change as per the approval of competent authorities. Hospital reservation, is being planned and being developed in the adjacent plot, as per Accommodation & Reservation policy (AR Policy) under applicable development control Regulation/s and/ or applicable law/s. In addition, further plots in the larger layout, earmarked for reservation may be acquired which shall be developed under the AR policy. Certain portion of land is affected by reservation. In order to make the optimum use of hospital reservation development, process for acquisition of reserved portion of land parcels is on, which would also be part of AR Policy.



TOWERS - 1 & 2
TYPICAL FLOOR PLAN
20TH TO 40TH FLOOR PLAN

MAHARERA NO.: P51700050167 | P51700050166. Details available at <https://maharera.mahaonline.gov.in>

The plans, designs, and dimensions are as per current sanctioned plans and approvals. Specifications, amenities, and facilities will be as set out in the agreement for sale as will be uploaded on the RERA website (<https://maharera.mahaonline.gov.in>) under Registration No. P51700050167 | P51700050166. The same may be subject to modification/change/ revision/alteration in terms of approvals, orders, directions and/or regulations of the concerned/relevant authorities, and/or for compliance with laws/regulations in force from time to time and/or in line with our customer policies we may modify/alter the above by following due procedure as prescribed under the Real Estate (Regulation and Development) Act, 2016, ("RERA") read with the provisions of the Maharashtra Real Estate (Regulation and Development) (Registration of real estate projects, Registration of real estate agents, rates of interest and disclosures on website) Rules, 2017 and the Rules and Regulations framed under RERA for Maharashtra ("RERA Rules"). The future development (mixed use, including commercial, office and/or retail) as shown in the layout are proposed and are subject to modification and change as per the approval of competent authorities. Hospital reservation, is being planned and being developed in the adjacent plot, as per Accommodation & Reservation policy (AR Policy) under applicable development control Regulation/s and/ or applicable law/s. In addition, further plots in the larger layout, earmarked for reservation may be acquired which shall be developed under the AR policy. Certain portion of land is affected by reservation. In order to make the optimum use of hospital reservation development, process for acquisition of reserved portion of land parcels is on, which would also be part of AR Policy.