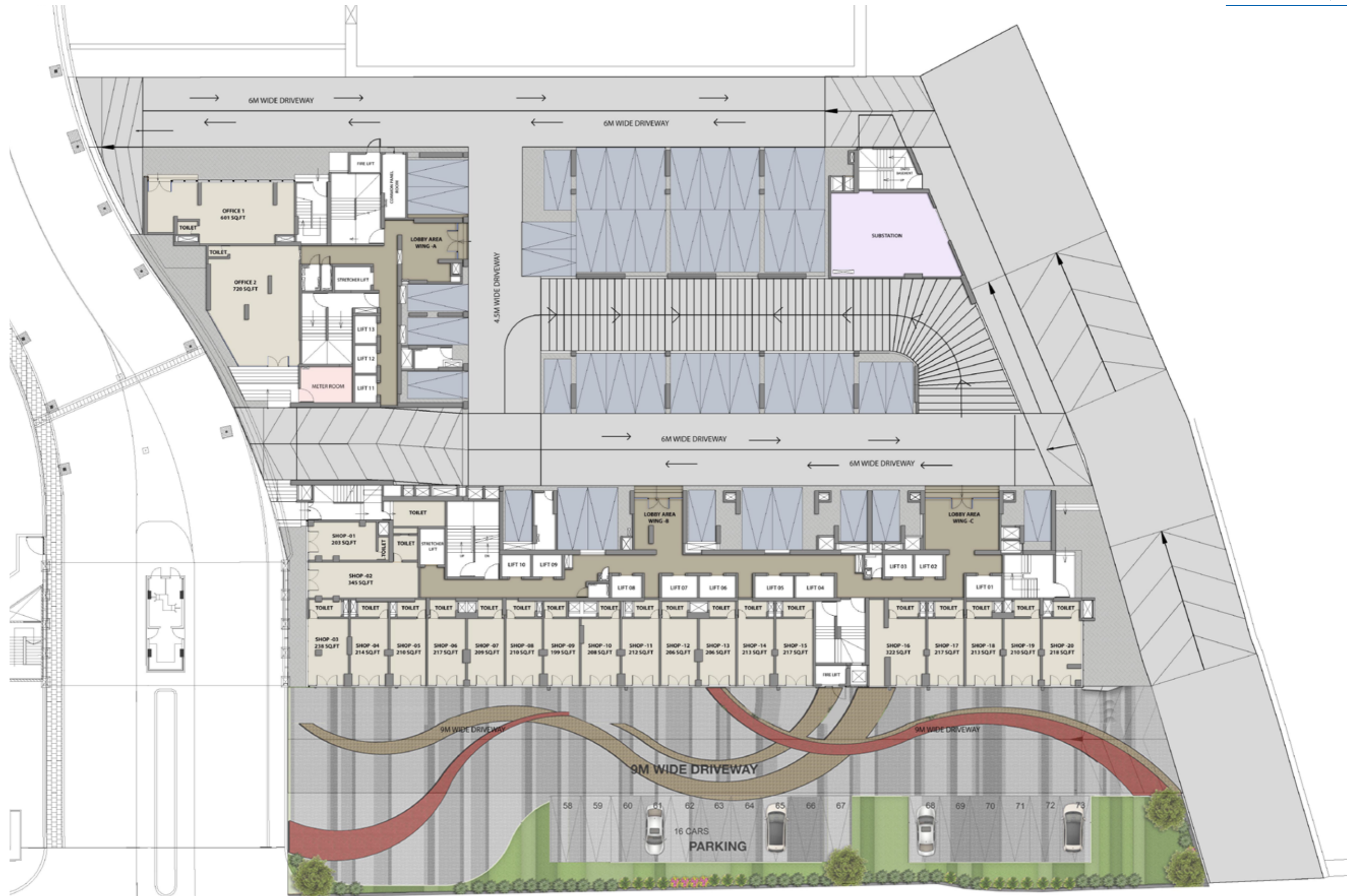


SIGNET

by omkar

Floor plans

Ground floor plan



The Project has been registered under MahaRERA Registration No.: P51800010463 and is available on the website <https://maharera.mahaonline.gov.in> under registered projects.

Artists' impressions are used to illustrate the amenities, specification, image and other details, the same does not form part of final offer. Tolerance/Variation of +/-3% is possible in the unit areas on account of design and construction variance. Any purchase of unit/premises shall be governed by the terms and conditions of the Agreement for Sale entered into between the parties and no detail mentioned in this printed material shall in any way govern such transaction.

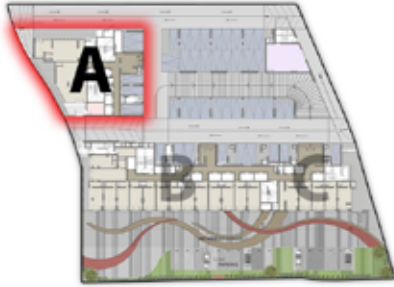
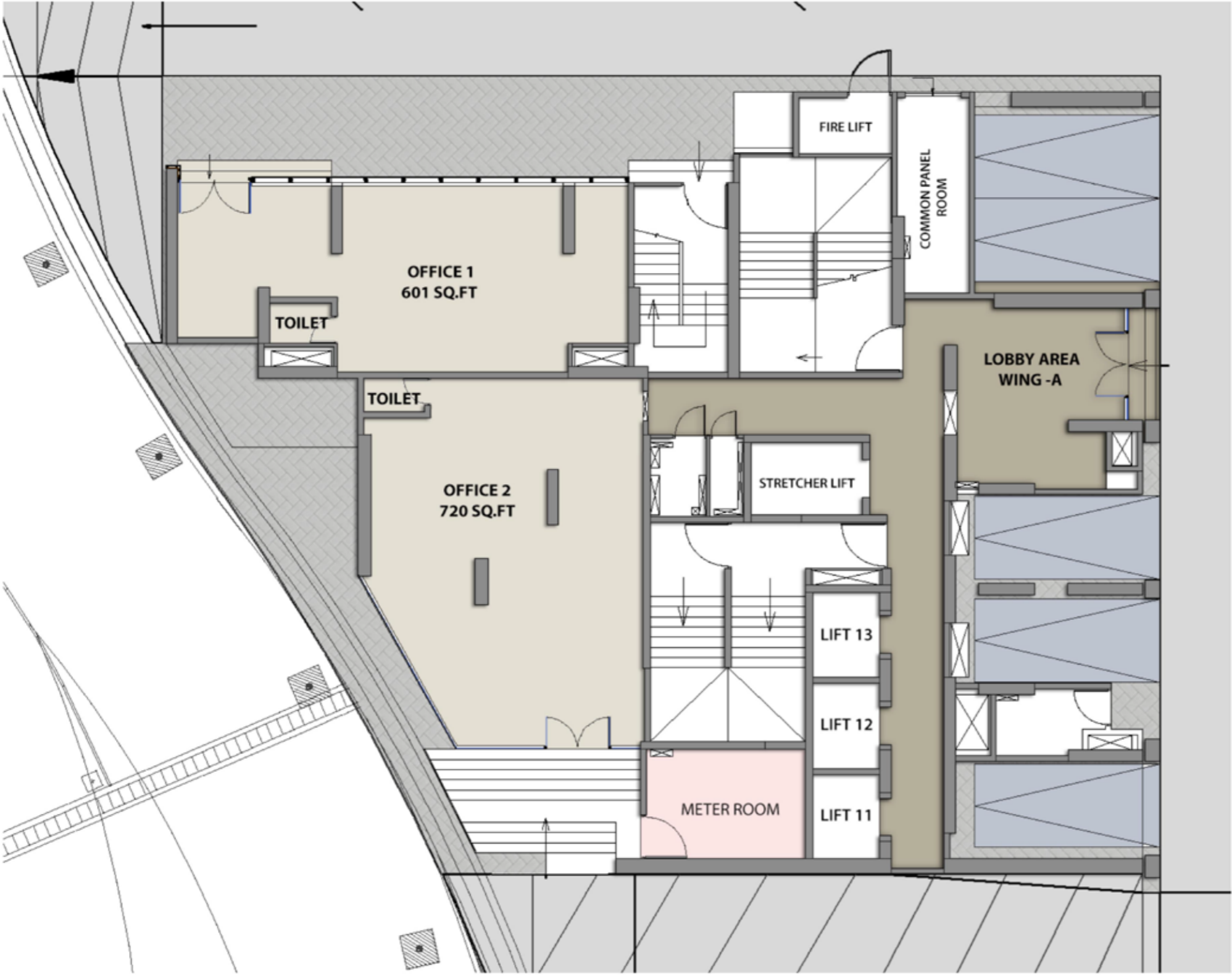


Ground floor plan

Wing - A

SIGNET

by omkar



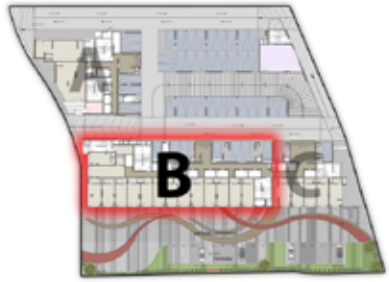
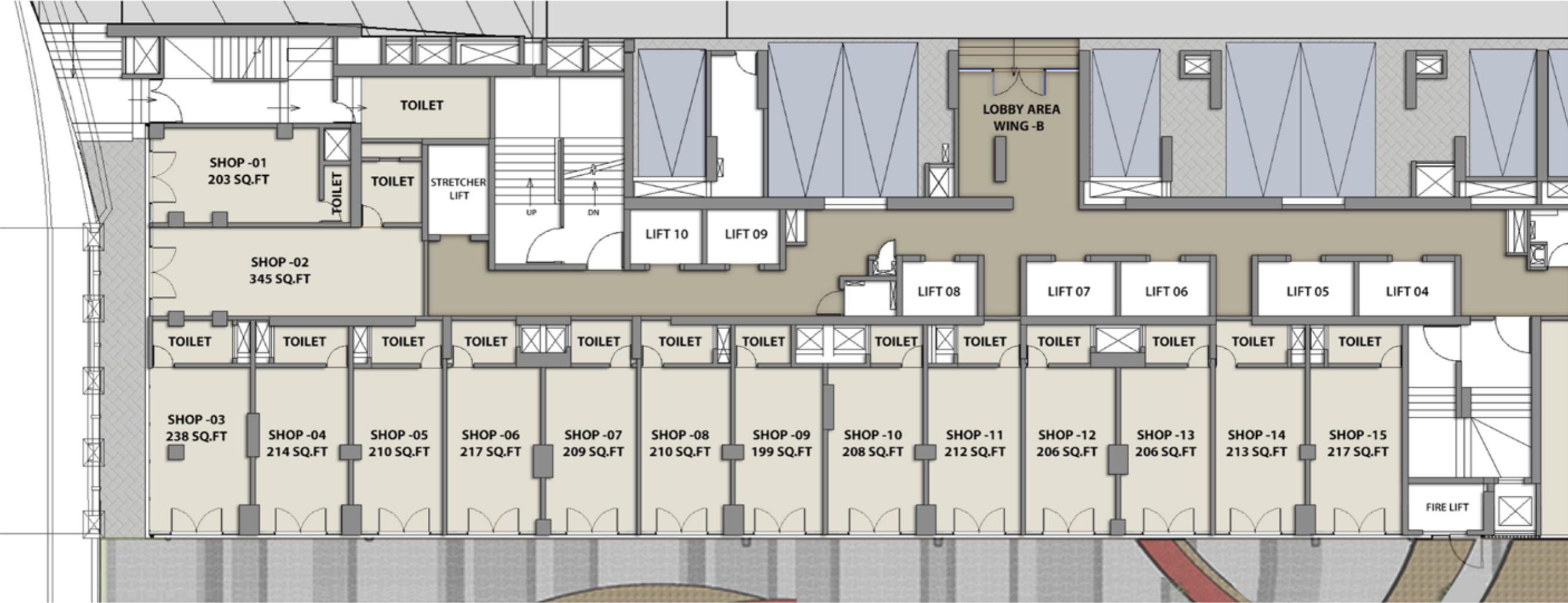
KEY PLAN

The Project has been registered under MahaRERA Registration No.: P51800010463 and is available on the website <https://maharera.mahaonline.gov.in> under registered projects.

Artists' impressions are used to illustrate the amenities, specification, image and other details, the same does not form part of final offer. Tolerance/Variation of +/-3% is possible in the unit areas on account of design and construction variance. Any purchase of unit/premises shall be governed by the terms and conditions of the Agreement for Sale entered into between the parties and no detail mentioned in this printed material shall in any way govern such transaction.

Ground floor plan

Wing - B



KEY PLAN

The Project has been registered under MahaRERA Registration No.: P51800010463 and is available on the website <https://maharera.mahaonline.gov.in> under registered projects.

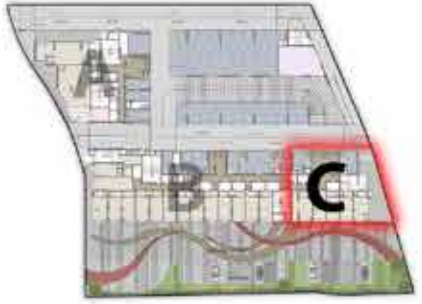
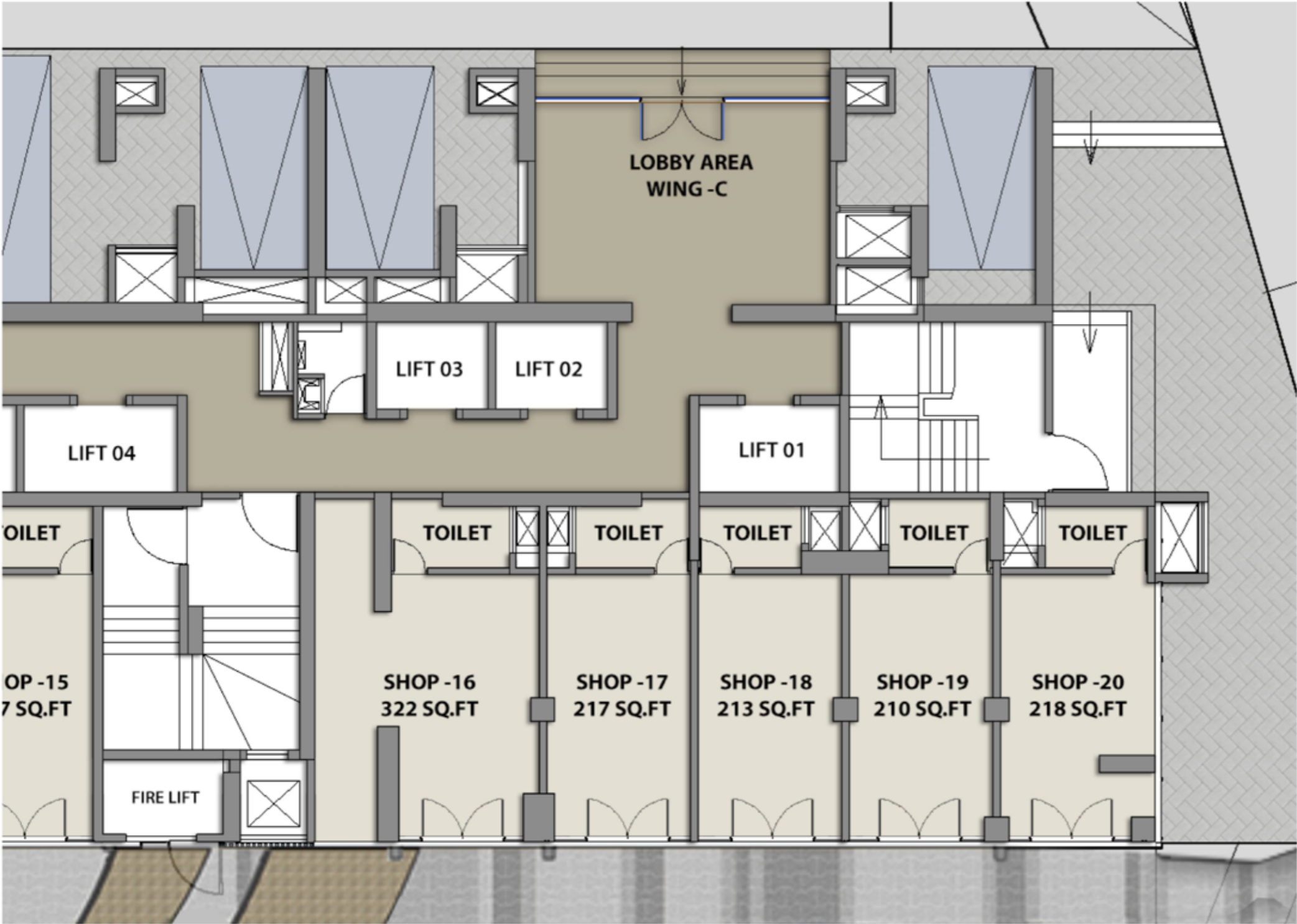
Artists' impressions are used to illustrate the amenities, specification, image and other details, the same does not form part of final offer. Tolerance/Variation of +/-3% is possible in the unit areas on account of design and construction variance. Any purchase of unit/premises shall be governed by the terms and conditions of the Agreement for Sale entered into between the parties and no detail mentioned in this printed material shall in any way govern such transaction.

Ground floor plan

Wing - C

SIGNET

by omkar

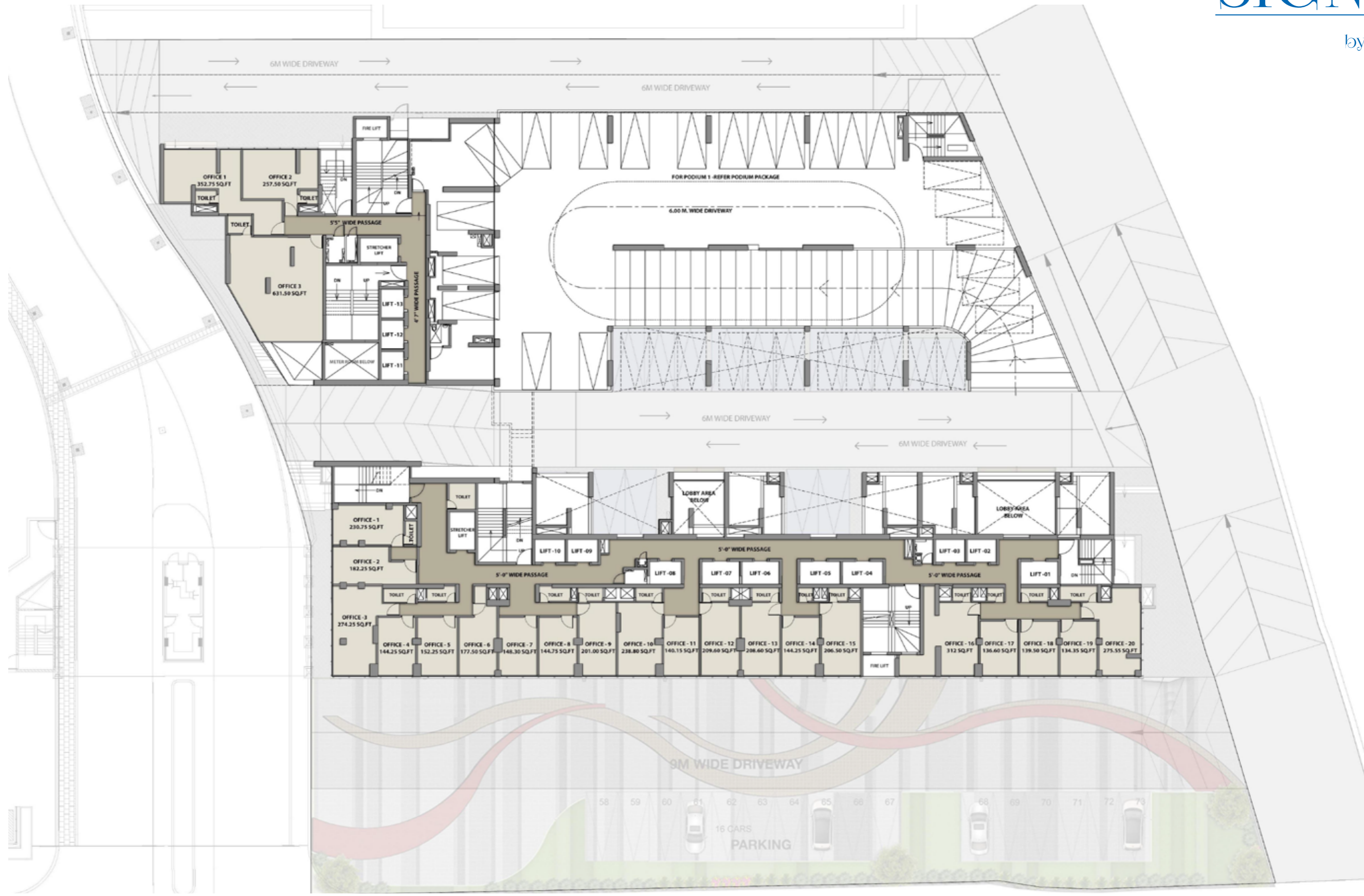


KEY PLAN

The Project has been registered under MahaRERA Registration No.: P51800010463 and is available on the website <https://maharera.mahaonline.gov.in> under registered projects.

Artists' impressions are used to illustrate the amenities, specification, image and other details, the same does not form part of final offer. Tolerance/Variation of +/-3% is possible in the unit areas on account of design and construction variance. Any purchase of unit/premises shall be governed by the terms and conditions of the Agreement for Sale entered into between the parties and no detail mentioned in this printed material shall in any way govern such transaction.

First floor plan



The Project has been registered under MahaRERA Registration No.: P51800010463 and is available on the website <https://maharera.mahaonline.gov.in> under registered projects.

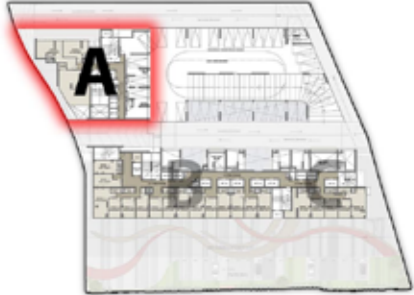
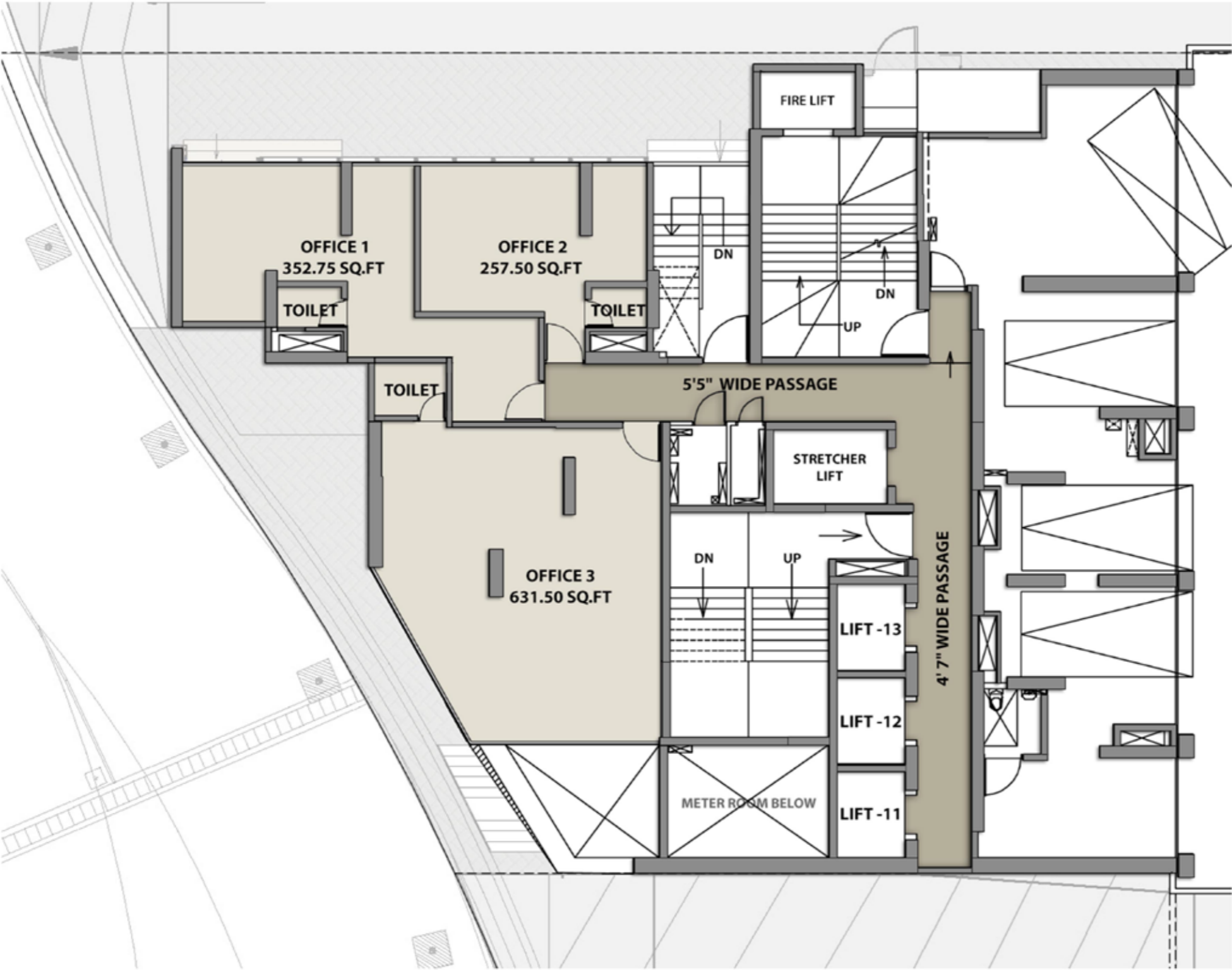
Artists' impressions are used to illustrate the amenities, specification, image and other details, the same does not form part of final offer. Tolerance/Variation of +/-3% is possible in the unit areas on account of design and construction variance. Any purchase of unit/premises shall be governed by the terms and conditions of the Agreement for Sale entered into between the parties and no detail mentioned in this printed material shall in any way govern such transaction.

First floor plan

Wing - A

SIGNET

by omkar



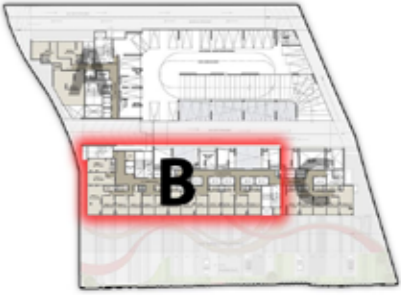
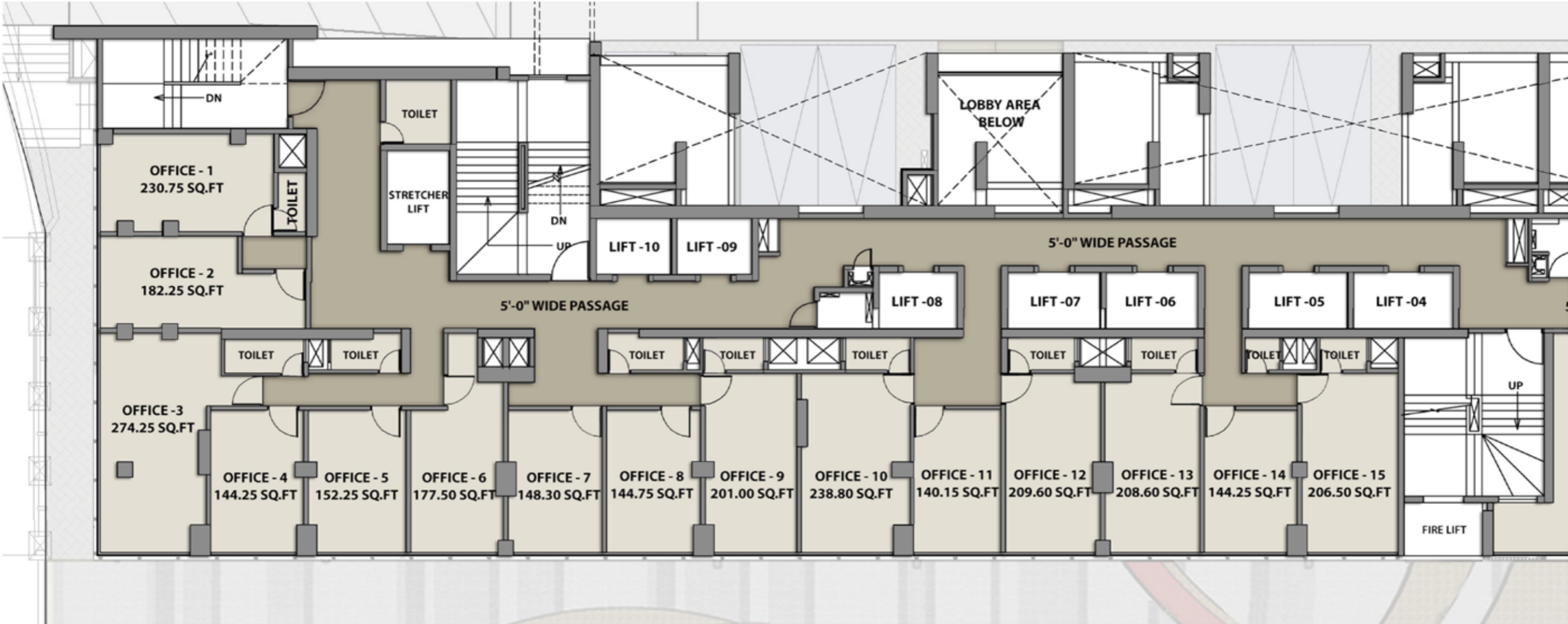
KEY PLAN

The Project has been registered under MahaRERA Registration No.: P51800010463 and is available on the website <https://maharera.mahaonline.gov.in> under registered projects.

Artists' impressions are used to illustrate the amenities, specification, image and other details, the same does not form part of final offer. Tolerance/Variation of +/-3% is possible in the unit areas on account of design and construction variance. Any purchase of unit/premises shall be governed by the terms and conditions of the Agreement for Sale entered into between the parties and no detail mentioned in this printed material shall in any way govern such transaction.

First floor plan

Wing - B



KEY PLAN

The Project has been registered under MahaRERA Registration No.: P51800010463 and is available on the website <https://maharera.mahaonline.gov.in> under registered projects.

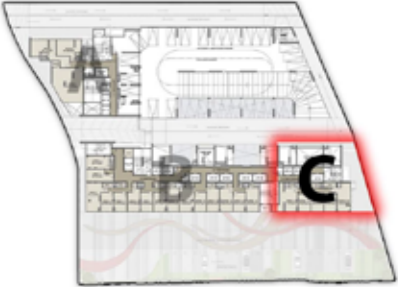
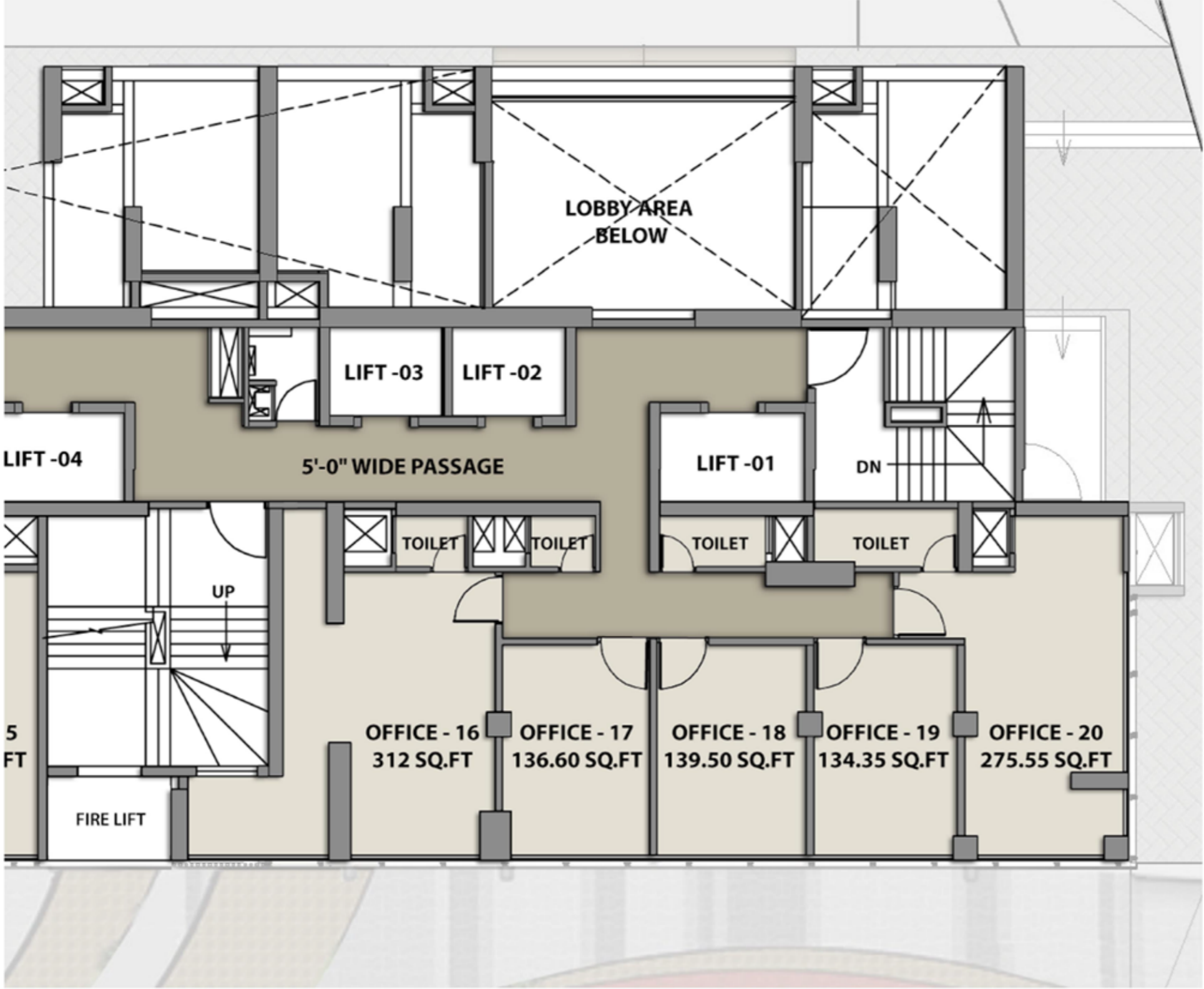
Artists' impressions are used to illustrate the amenities, specification, image and other details, the same does not form part of final offer. Tolerance/Variation of +/-3% is possible in the unit areas on account of design and construction variance. Any purchase of unit/premises shall be governed by the terms and conditions of the Agreement for Sale entered into between the parties and no detail mentioned in this printed material shall in any way govern such transaction.

First floor plan

Wing - C

SIGNET

by omkar

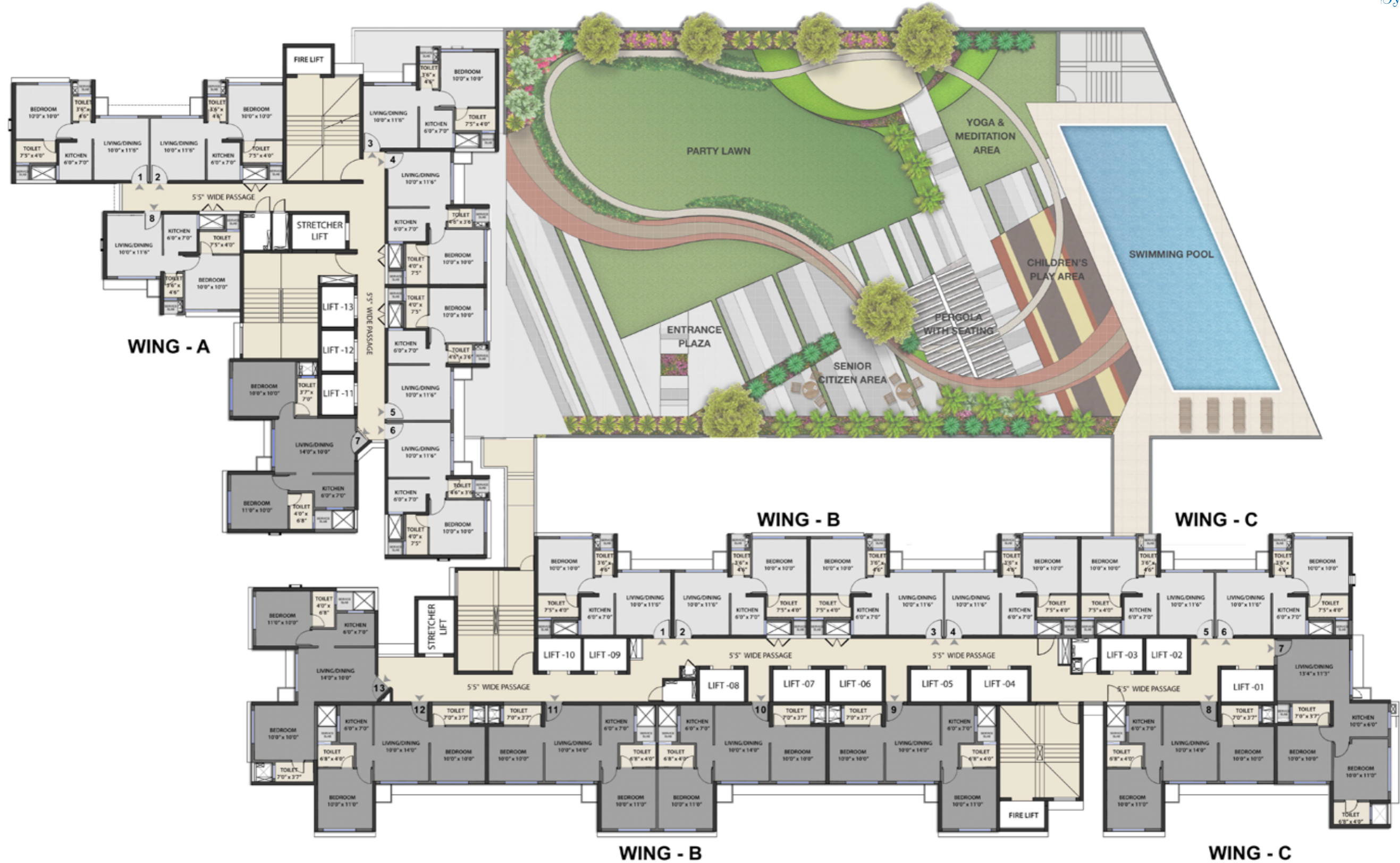


KEY PLAN

The Project has been registered under MahaRERA Registration No.: P51800010463 and is available on the website <https://maharera.mahaonline.gov.in> under registered projects.

Artists' impressions are used to illustrate the amenities, specification, image and other details, the same does not form part of final offer. Tolerance/Variation of +/-3% is possible in the unit areas on account of design and construction variance. Any purchase of unit/premises shall be governed by the terms and conditions of the Agreement for Sale entered into between the parties and no detail mentioned in this printed material shall in any way govern such transaction.

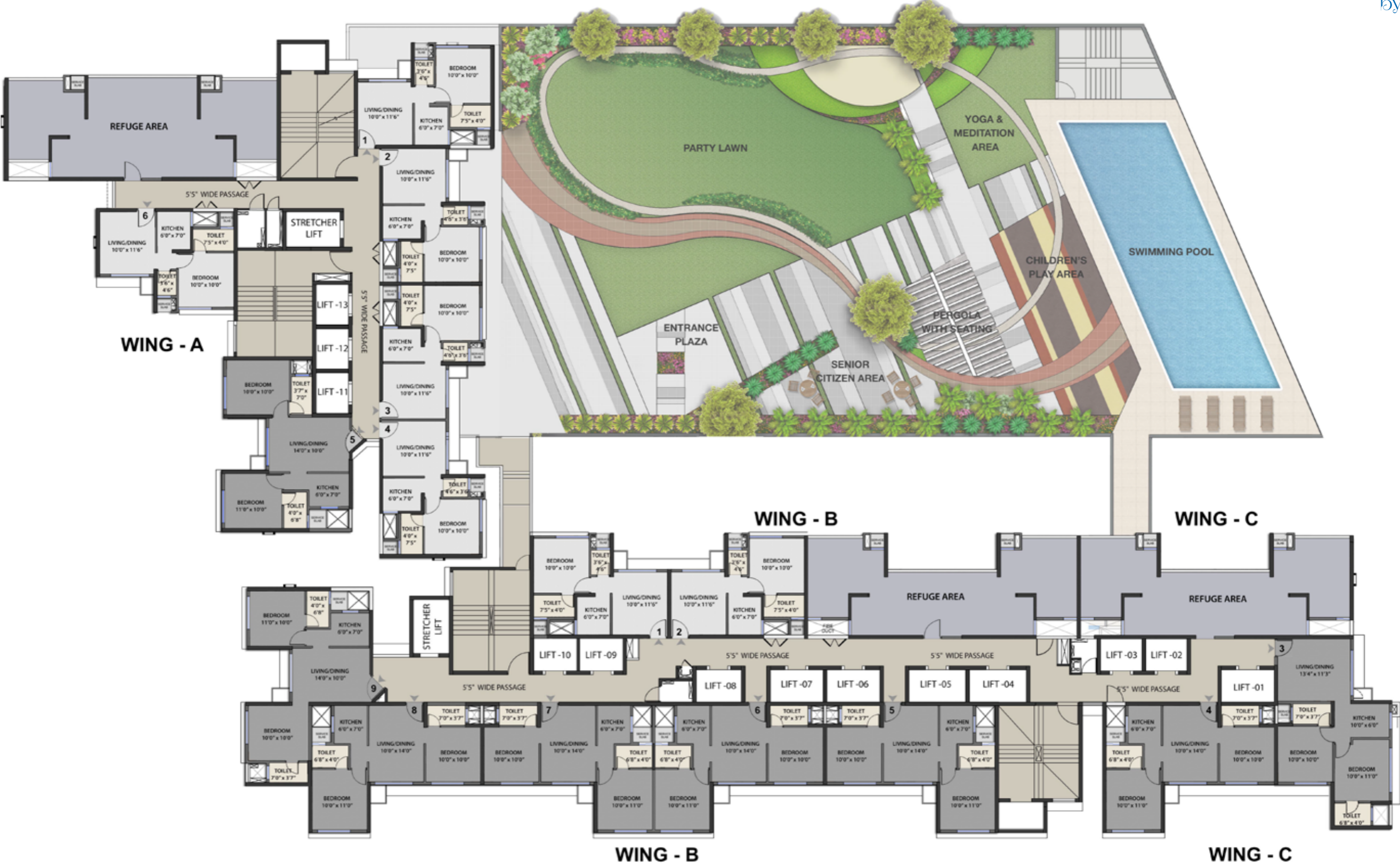
Typical floor plan



The Project has been registered under MahaRERA Registration No.: P51800010463 and is available on the website <https://maharera.mahaonline.gov.in> under registered projects.

Artists' impressions are used to illustrate the amenities, specification, image and other details, the same does not form part of final offer. Tolerance/Variation of +/-3% is possible in the unit areas on account of design and construction variance. Any purchase of unit/premises shall be governed by the terms and conditions of the Agreement for Sale entered into between the parties and no detail mentioned in this printed material shall in any way govern such transaction.

14th to 21st refuge floor plan



The Project has been registered under MahaRERA Registration No.: P51800010463 and is available on the website <https://maharera.mahaonline.gov.in> under registered projects. Artists' impressions are used to illustrate the amenities, specification, image and other details, the same does not form part of final offer. Tolerance/Variation of +/-3% is possible in the unit areas on account of design and construction variance. Any purchase of unit/premises shall be governed by the terms and conditions of the Agreement for Sale entered into between the parties and no detail mentioned in this printed material shall in any way govern such transaction.

1 BHK

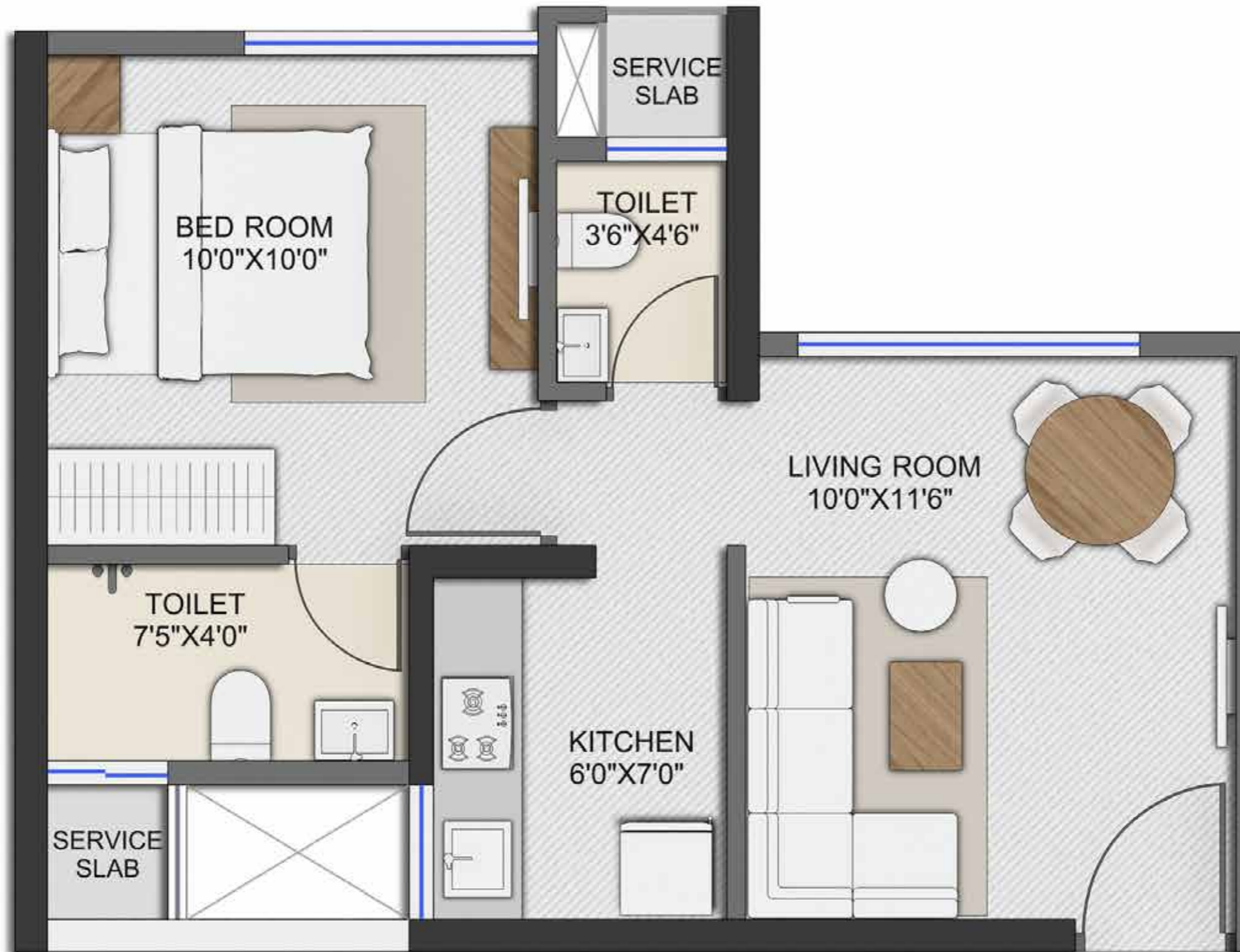
SIGNET
by omkar



The Project has been registered under MahaRERA Registration No.: P51800010463 and is available on the website <https://maharera.mahaonline.gov.in> under registered projects.

Artists' impressions are used to illustrate the amenities, specification, image and other details, the same does not form part of final offer. Tolerance/Variation of +/-3% is possible in the unit areas on account of design and construction variance. Any purchase of unit/premises shall be governed by the terms and conditions of the Agreement for Sale entered into between the parties and no detail mentioned in this printed material shall in any way govern such transaction.

1 BHK - Unit plan

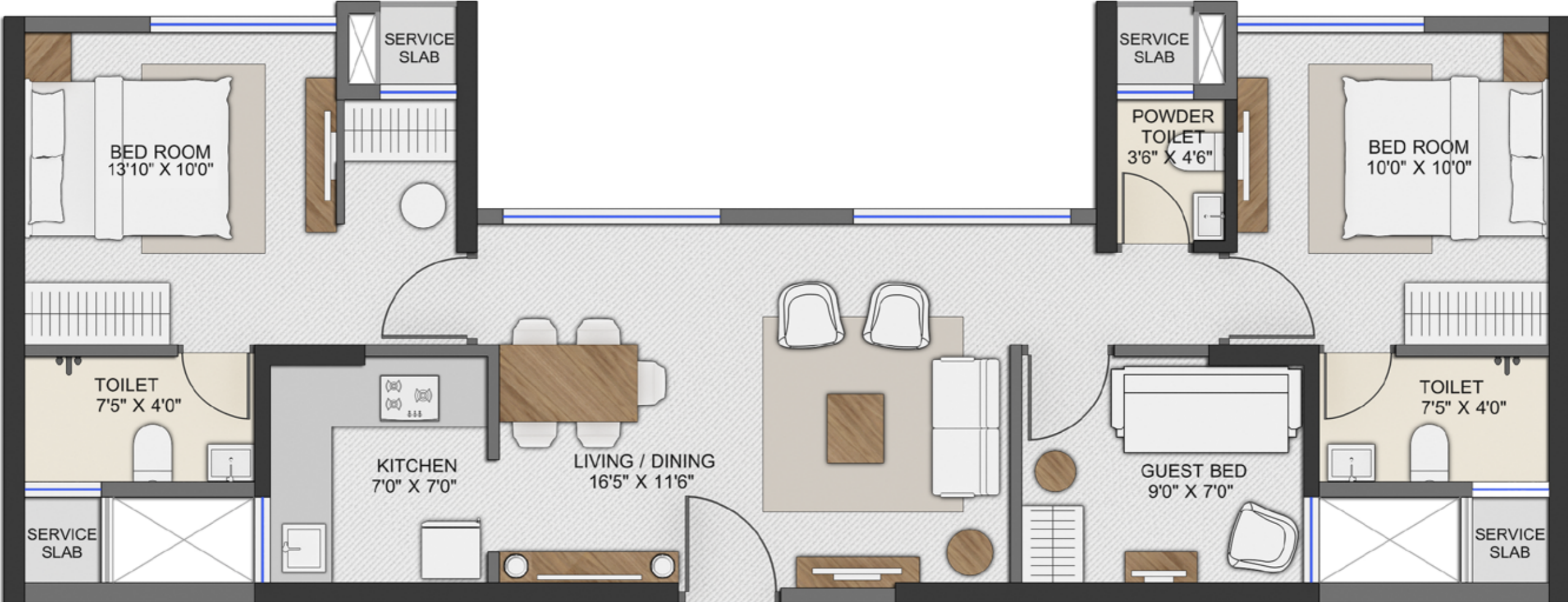


KEY PLAN

The Project has been registered under MahaRERA Registration No.: P51800010463 and is available on the website <https://maharera.mahaonline.gov.in> under registered projects.

Artists' impressions are used to illustrate the amenities, specification, image and other details, the same does not form part of final offer. Tolerance/Variation of +/-3% is possible in the unit areas on account of design and construction variance. Any purchase of unit/premises shall be governed by the terms and conditions of the Agreement for Sale entered into between the parties and no detail mentioned in this printed material shall in any way govern such transaction.

1 BHK - Jodi flat

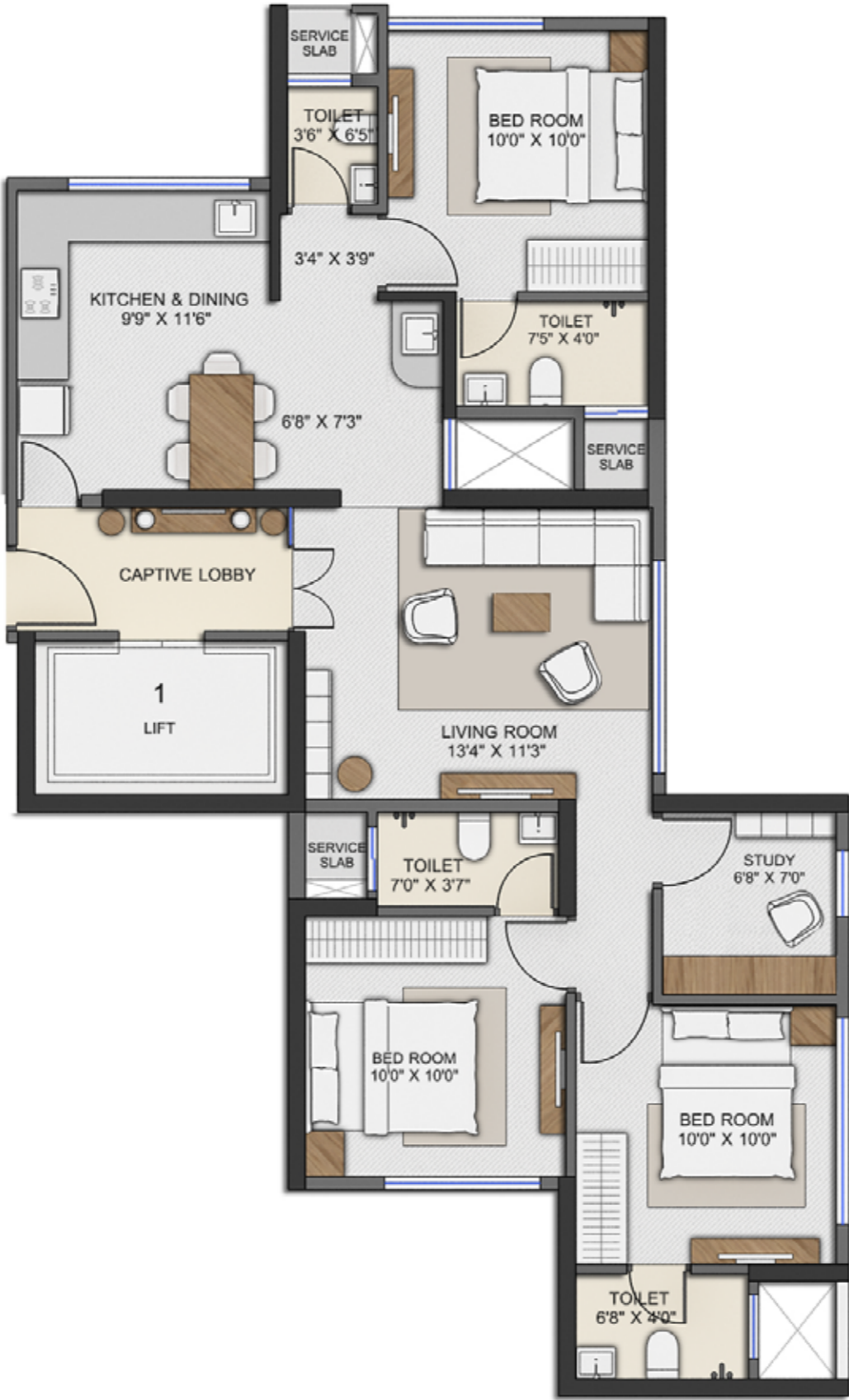


KEY PLAN

The Project has been registered under MahaRERA Registration No.: P51800010463 and is available on the website <https://maharera.mahaonline.gov.in> under registered projects.

Artists' impressions are used to illustrate the amenities, specification, image and other details, the same does not form part of final offer. Tolerance/Variation of +/-3% is possible in the unit areas on account of design and construction variance. Any purchase of unit/premises shall be governed by the terms and conditions of the Agreement for Sale entered into between the parties and no detail mentioned in this printed material shall in any way govern such transaction.

1 BHK & 2 BHK - Jodi flat



KEY PLAN

The Project has been registered under MahaRERA Registration No.: P51800010463 and is available on the website <https://maharera.mahaonline.gov.in> under registered projects.

Artists' impressions are used to illustrate the amenities, specification, image and other details, the same does not form part of final offer. Tolerance/Variation of +/-3% is possible in the unit areas on account of design and construction variance. Any purchase of unit/premises shall be governed by the terms and conditions of the Agreement for Sale entered into between the parties and no detail mentioned in this printed material shall in any way govern such transaction.

2 BHK

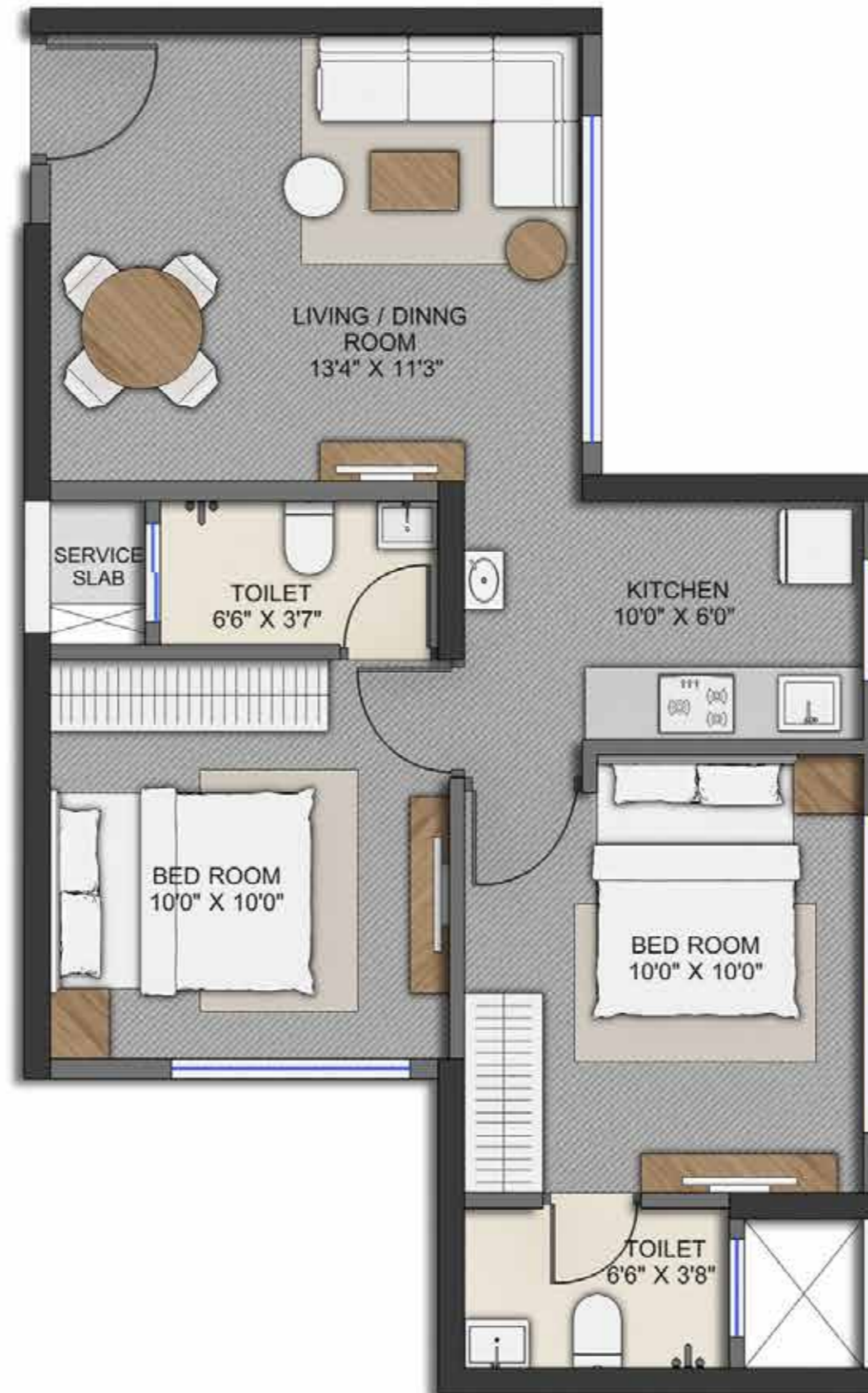
SIGNET
by omkar



The Project has been registered under MahaRERA Registration No.: P51800010463 and is available on the website <https://maharera.mahaonline.gov.in> under registered projects.

Artists' impressions are used to illustrate the amenities, specification, image and other details, the same does not form part of final offer. Tolerance/Variation of +/-3% is possible in the unit areas on account of design and construction variance. Any purchase of unit/premises shall be governed by the terms and conditions of the Agreement for Sale entered into between the parties and no detail mentioned in this printed material shall in any way govern such transaction.

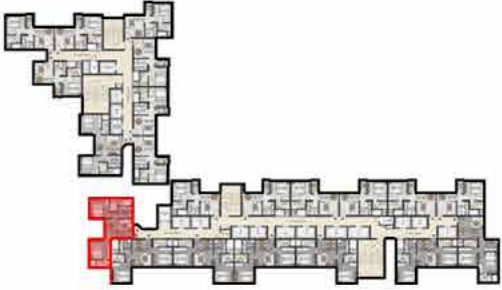
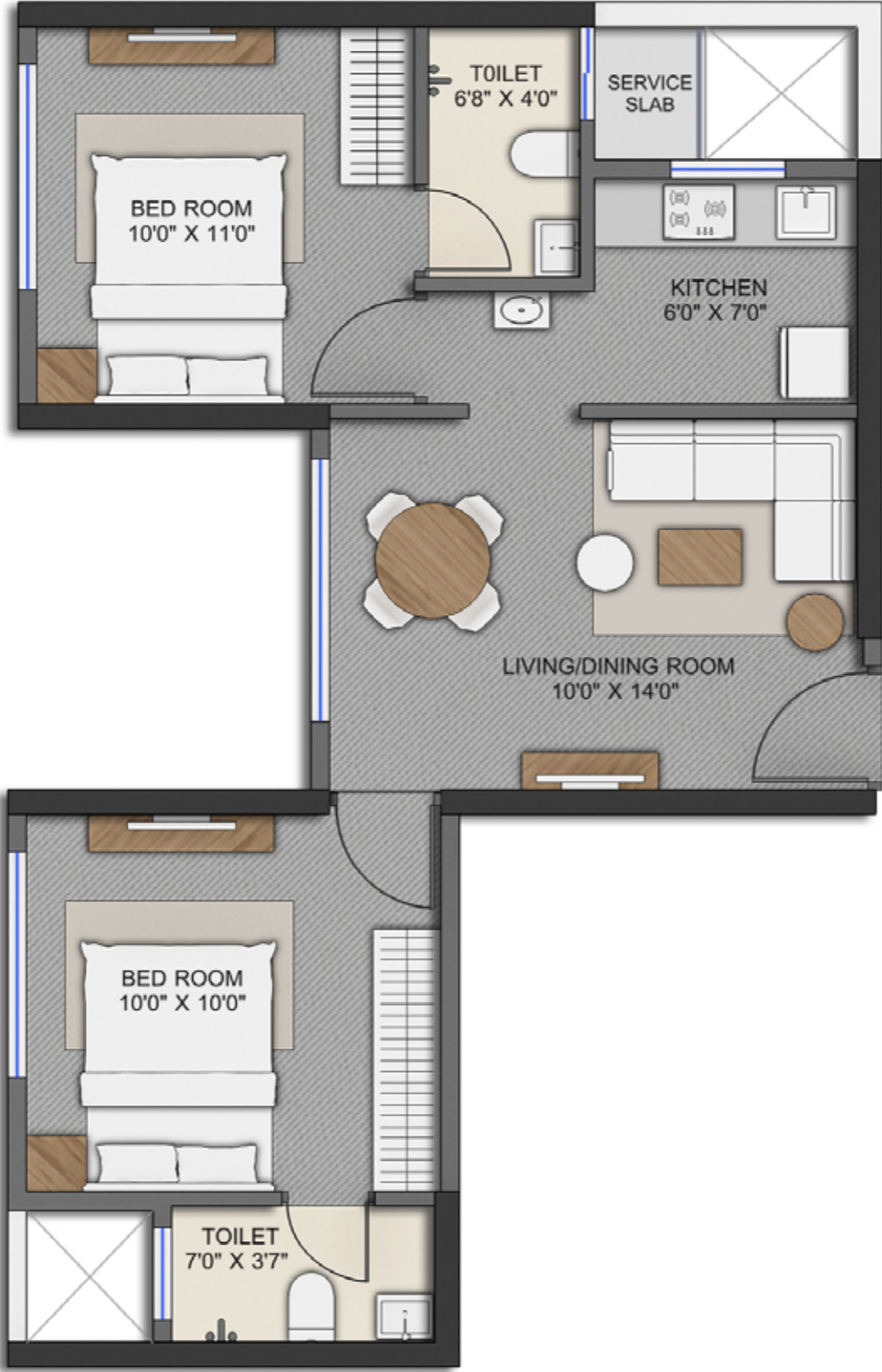
2 BHK - Unit plan



The Project has been registered under MahaRERA Registration No.: P51800010463 and is available on the website <https://maharera.mahaonline.gov.in> under registered projects.

Artists' impressions are used to illustrate the amenities, specification, image and other details, the same does not form part of final offer. Tolerance/Variation of +/-3% is possible in the unit areas on account of design and construction variance. Any purchase of unit/premises shall be governed by the terms and conditions of the Agreement for Sale entered into between the parties and no detail mentioned in this printed material shall in any way govern such transaction.

2 BHK - Unit plan

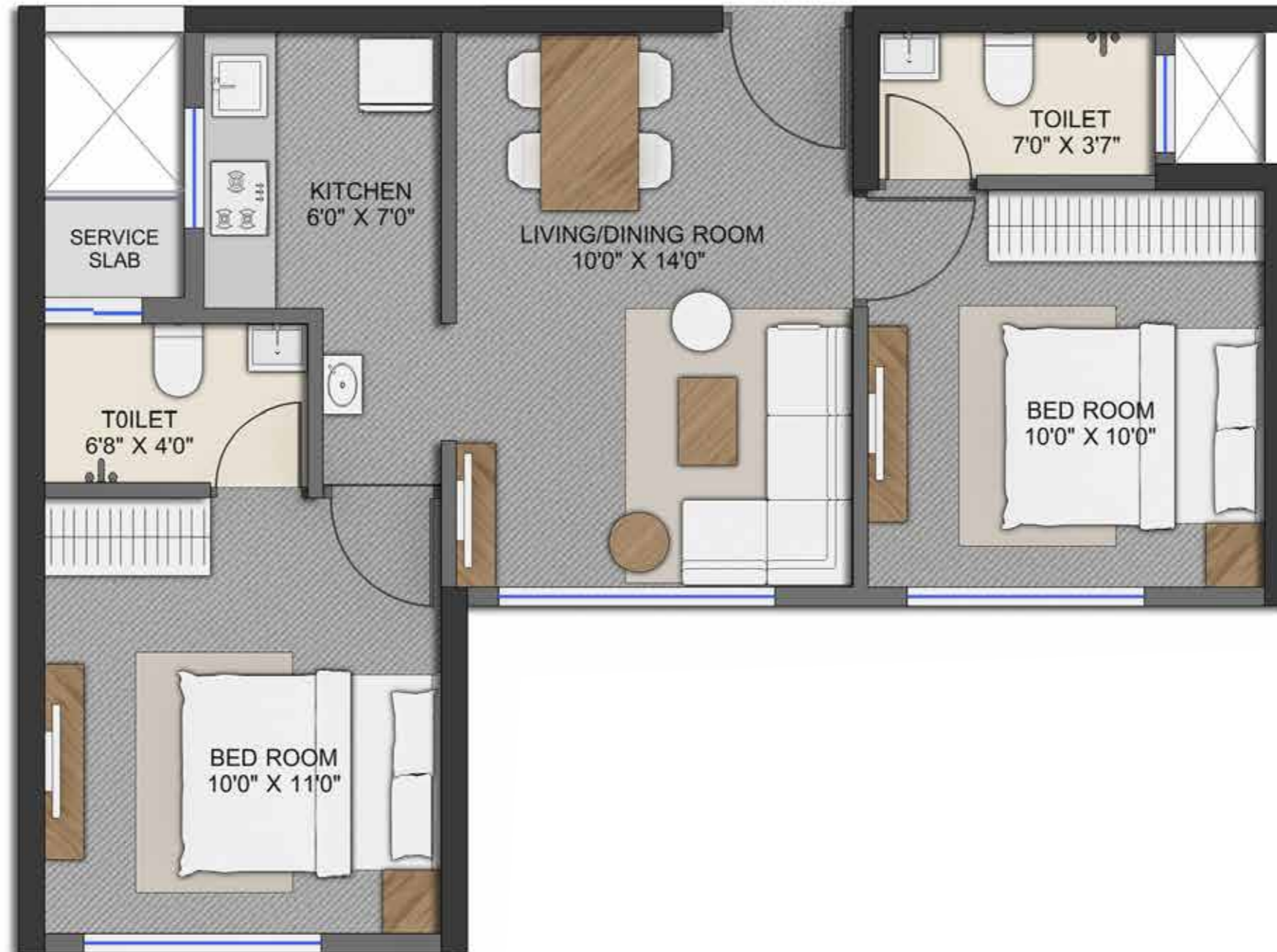


KEY PLAN

The Project has been registered under MahaRERA Registration No.: P51800010463 and is available on the website <https://maharera.mahaonline.gov.in> under registered projects.

Artists' impressions are used to illustrate the amenities, specification, image and other details, the same does not form part of final offer. Tolerance/Variation of +/-3% is possible in the unit areas on account of design and construction variance. Any purchase of unit/premises shall be governed by the terms and conditions of the Agreement for Sale entered into between the parties and no detail mentioned in this printed material shall in any way govern such transaction.

2 BHK - Unit plan

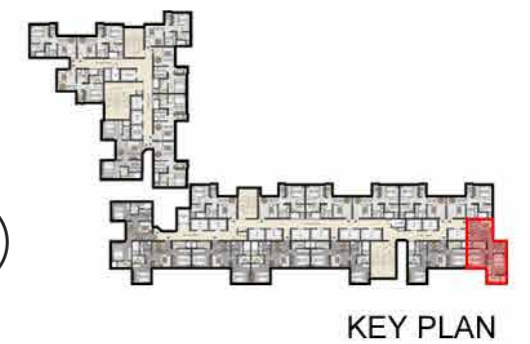
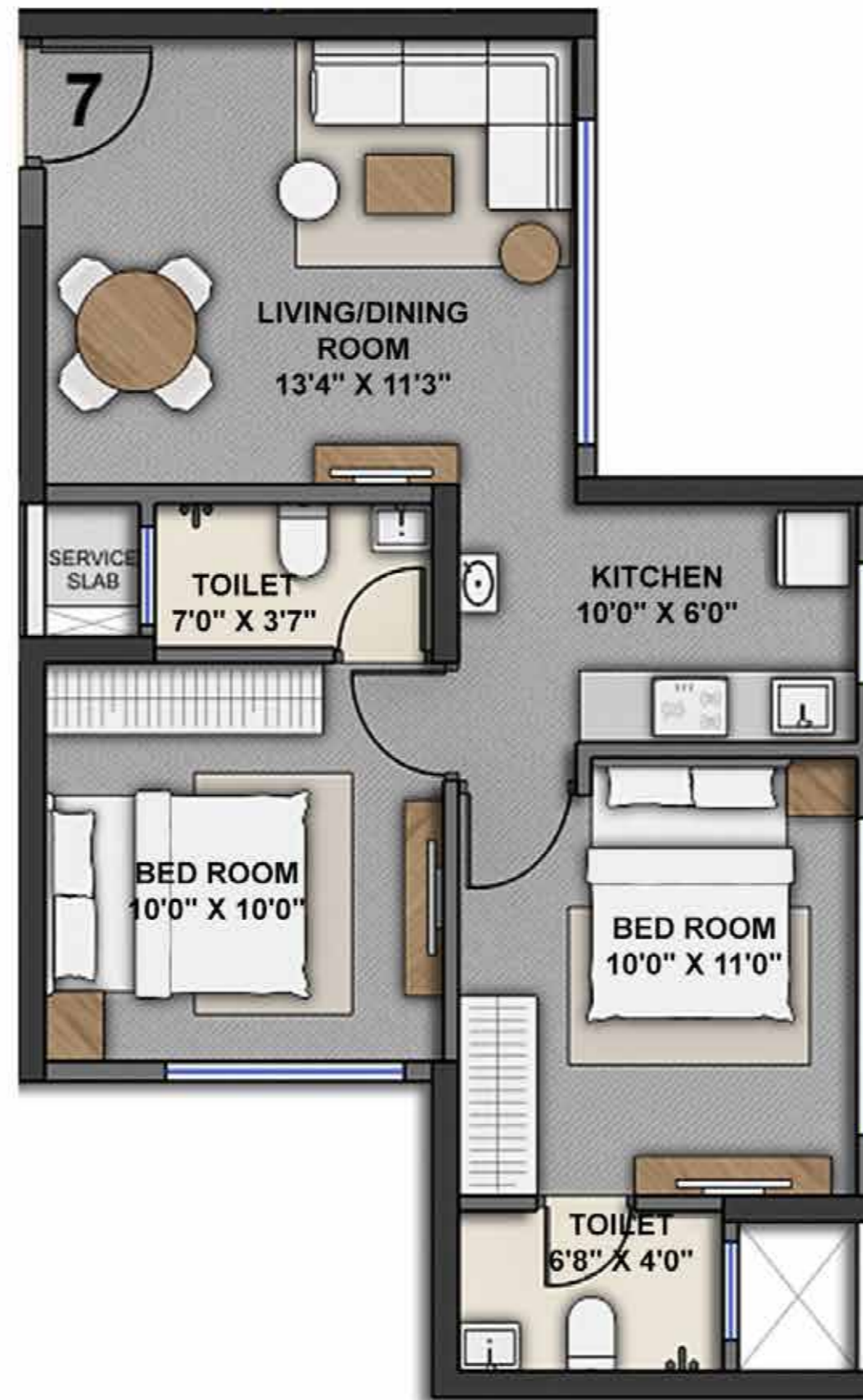


KEY PLAN

The Project has been registered under MahaRERA Registration No.: P51800010463 and is available on the website <https://maharera.mahaonline.gov.in> under registered projects.

Artists' impressions are used to illustrate the amenities, specification, image and other details, the same does not form part of final offer. Tolerance/Variation of +/-3% is possible in the unit areas on account of design and construction variance. Any purchase of unit/premises shall be governed by the terms and conditions of the Agreement for Sale entered into between the parties and no detail mentioned in this printed material shall in any way govern such transaction.

2 BHK - Unit plan

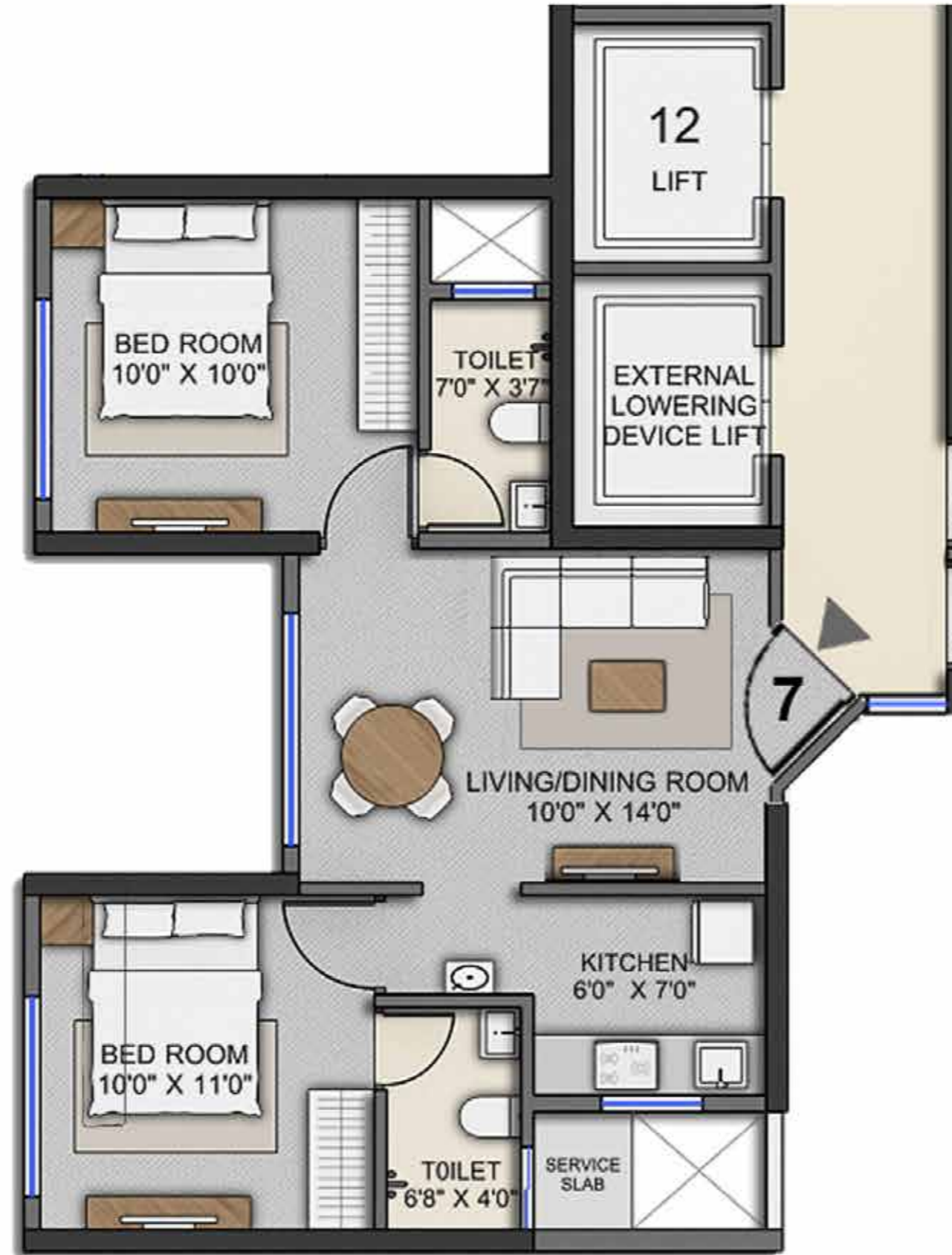


The Project has been registered under MahaRERA Registration No.: P51800010463 and is available on the website <https://maharera.mahaonline.gov.in> under registered projects.

Artists' impressions are used to illustrate the amenities, specification, image and other details, the same does not form part of final offer. Tolerance/Variation of +/-3% is possible in the unit areas on account of design and construction variance. Any purchase of unit/premises shall be governed by the terms and conditions of the Agreement for Sale entered into between the parties and no detail mentioned in this printed material shall in any way govern such transaction.

2 BHK - Unit plan

Wing - A



KEY PLAN

The Project has been registered under MahaRERA Registration No.: P51800010463 and is available on the website <https://maharera.mahaonline.gov.in> under registered projects.

Artists' impressions are used to illustrate the amenities, specification, image and other details, the same does not form part of final offer. Tolerance/Variation of +/-3% is possible in the unit areas on account of design and construction variance. Any purchase of unit/premises shall be governed by the terms and conditions of the Agreement for Sale entered into between the parties and no detail mentioned in this printed material shall in any way govern such transaction.

2 BHK & 2 BHK - Jodi flat



KEY PLAN

The Project has been registered under MahaRERA Registration No.: P51800010463 and is available on the website <https://maharera.mahaonline.gov.in> under registered projects.

Artists' impressions are used to illustrate the amenities, specification, image and other details, the same does not form part of final offer. Tolerance/Variation of +/-3% is possible in the unit areas on account of design and construction variance. Any purchase of unit/premises shall be governed by the terms and conditions of the Agreement for Sale entered into between the parties and no detail mentioned in this printed material shall in any way govern such transaction.