



WING A

**ORA**

KALPATARU RADIANCE

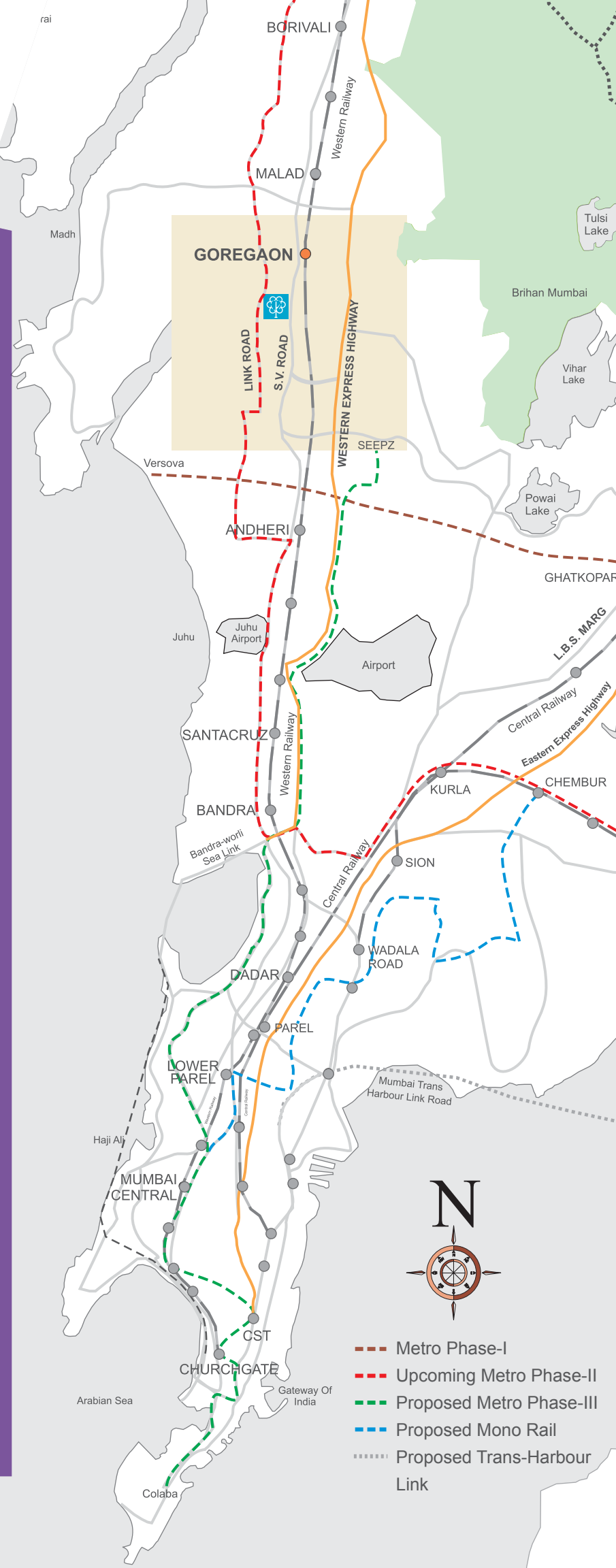
Goregaon West



PLANS

# LOCATION

- Its proximity to S.V. Road, JVL and Goregaon-Mulund Link Road ensures ease of access to the central and western suburbs.
- With the new flyover at Oshiwara, and the upcoming Metro Phase-II, commuting will be minus all hassles and you'll find more time for life.



Source<sup>5</sup>

- Upcoming Metro Phase II - <https://mmrda.maharashtra.gov.in/metro-line-2a>
- Proposed Metro Phase III - <https://www.mmrc.com/en/project/project-route>
- Proposed Mono Rail - <https://mmrda.maharashtra.gov.in/mumbai-monorail-project#>
- Proposed Trans-Harbour Link - <https://mmrda.maharashtra.gov.in/mthl#>



■ Upcoming Metro Station  
 - - - Upcoming Metro Phase-II

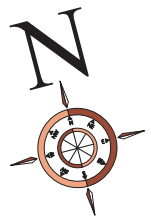
# COMPLEX LAYOUT



- |                             |                        |                         |
|-----------------------------|------------------------|-------------------------|
| 1. Entry/exit gate          | 6. Outdoor seating     | 11. Tree bosque         |
| 2. Security cabin           | 7. Swimming pool       | 12. Lawn tennis court   |
| 3. Water feature            | 8. Pool deck           | 13. Outdoor chess court |
| 4. Clubhouse/fitness centre | 9. Spa garden          | 14. Rock climbing wall  |
| 5. Party lawns              | 10. Children play area | 15. Retail shop         |



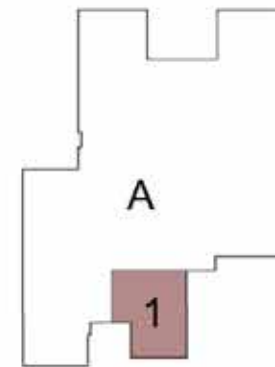
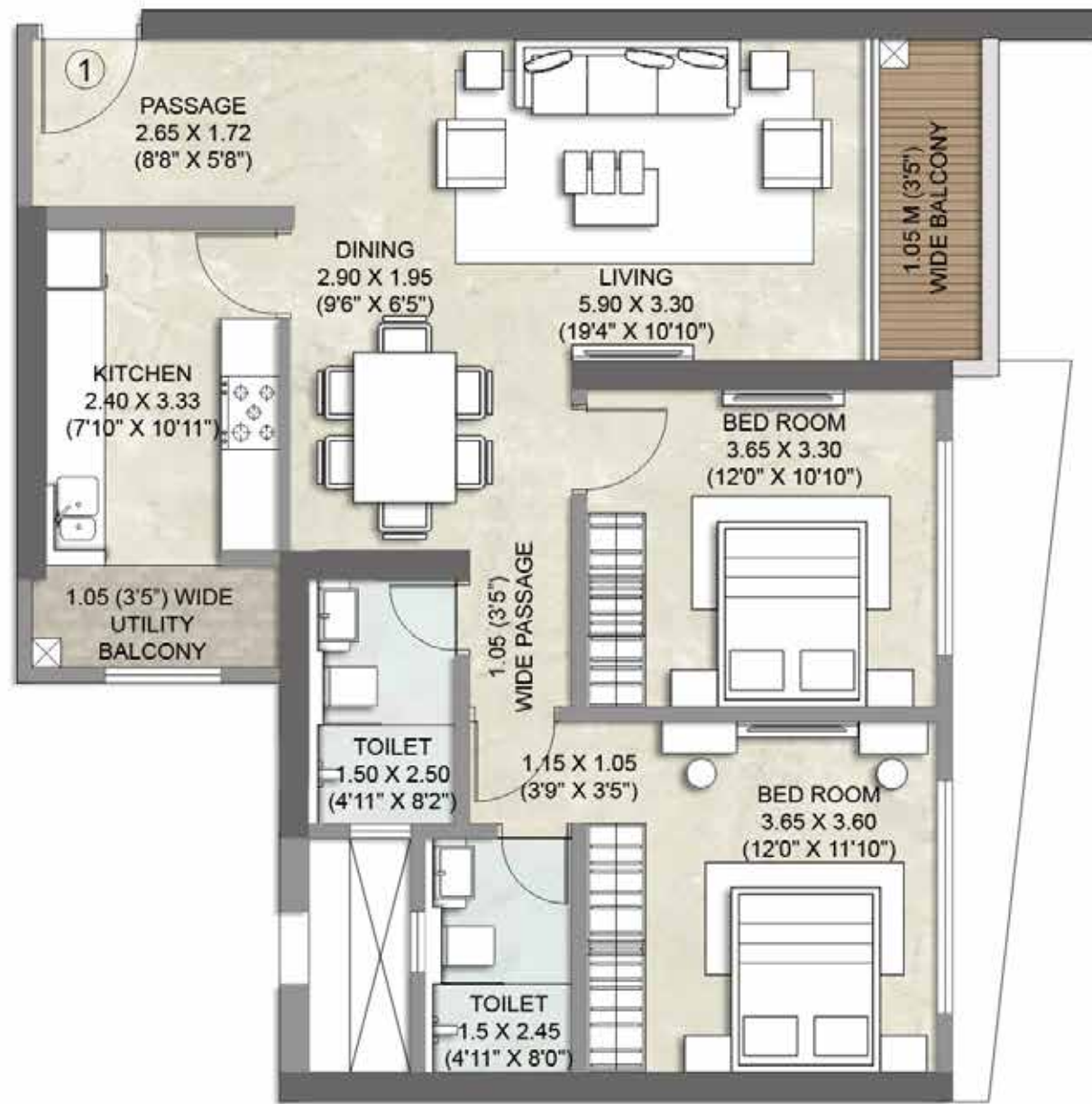
# WING A TYPICAL FLOOR PLAN



Conditions apply^

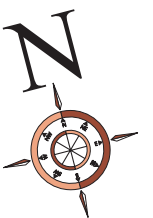
# WING A

## APARTMENT NO. 1: 2 BHK



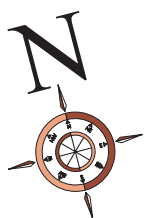
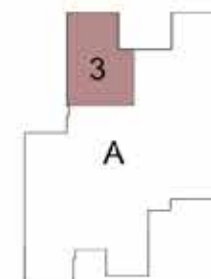
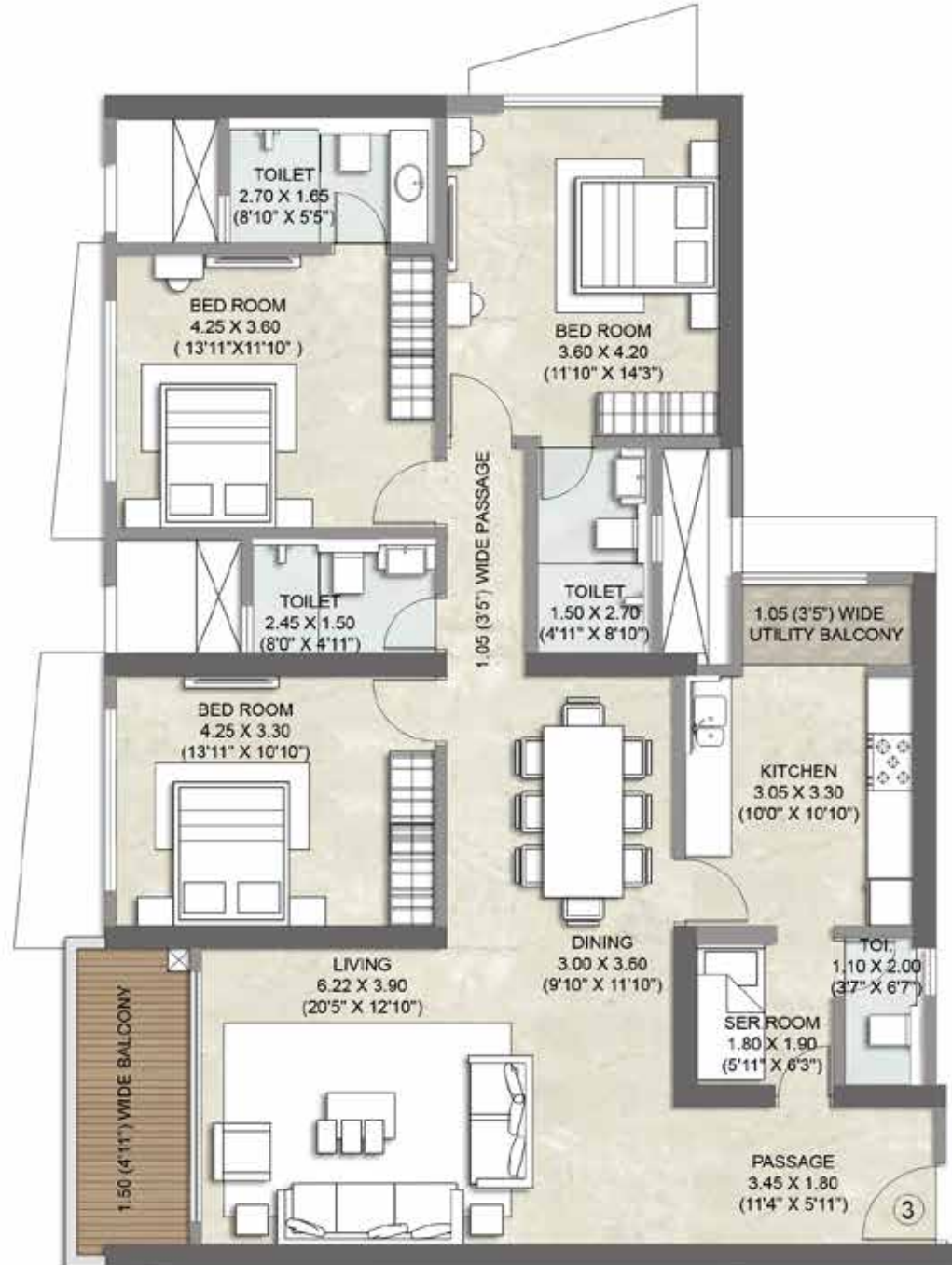
# WING A

## APARTMENT NO. 2: 4 BHK



# WING A

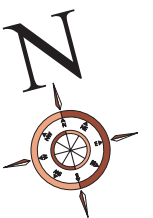
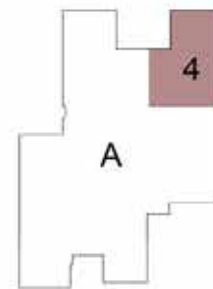
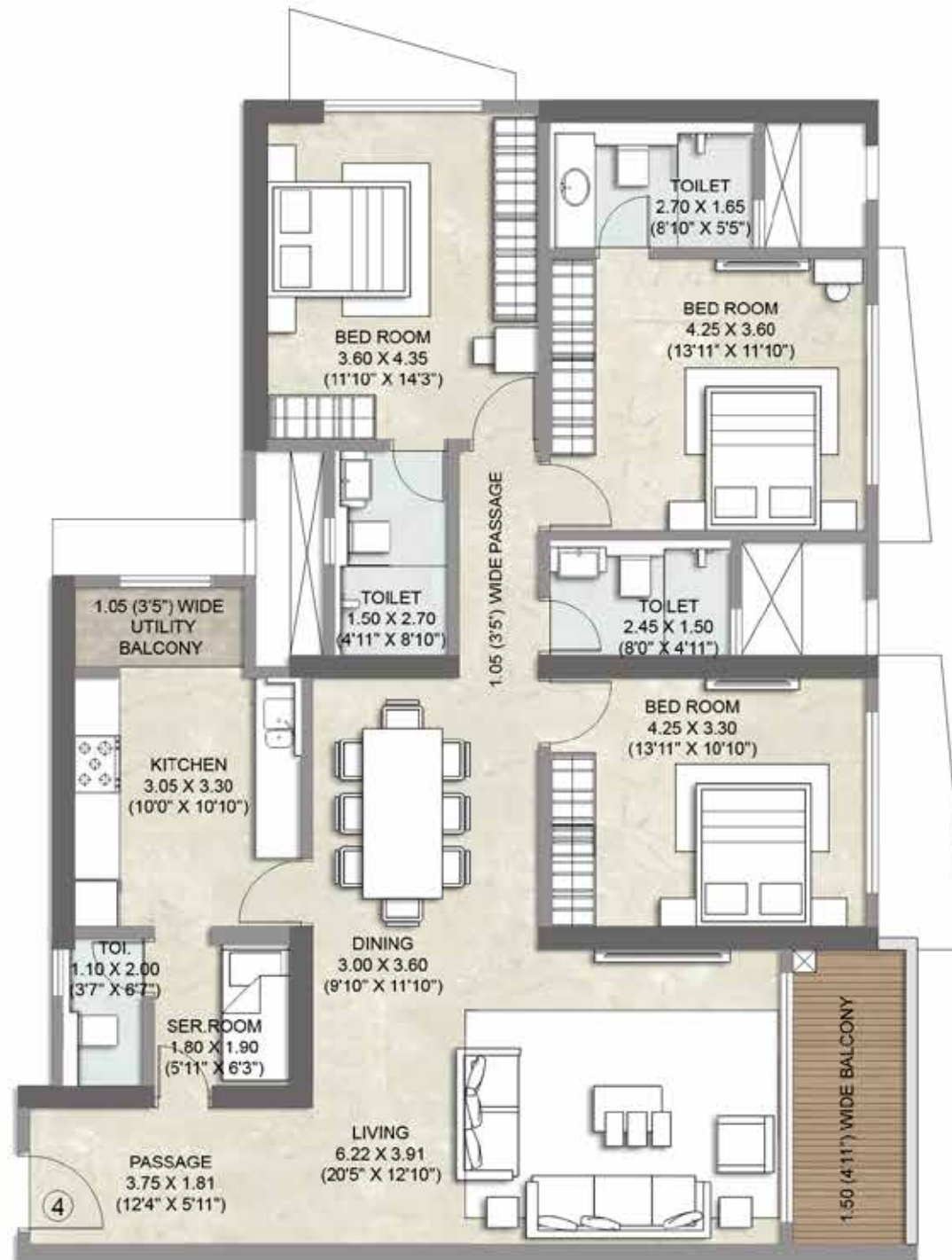
## APARTMENT NO. 3: 3 BHK





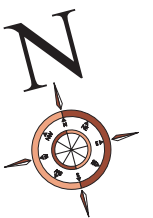
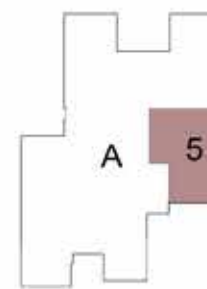
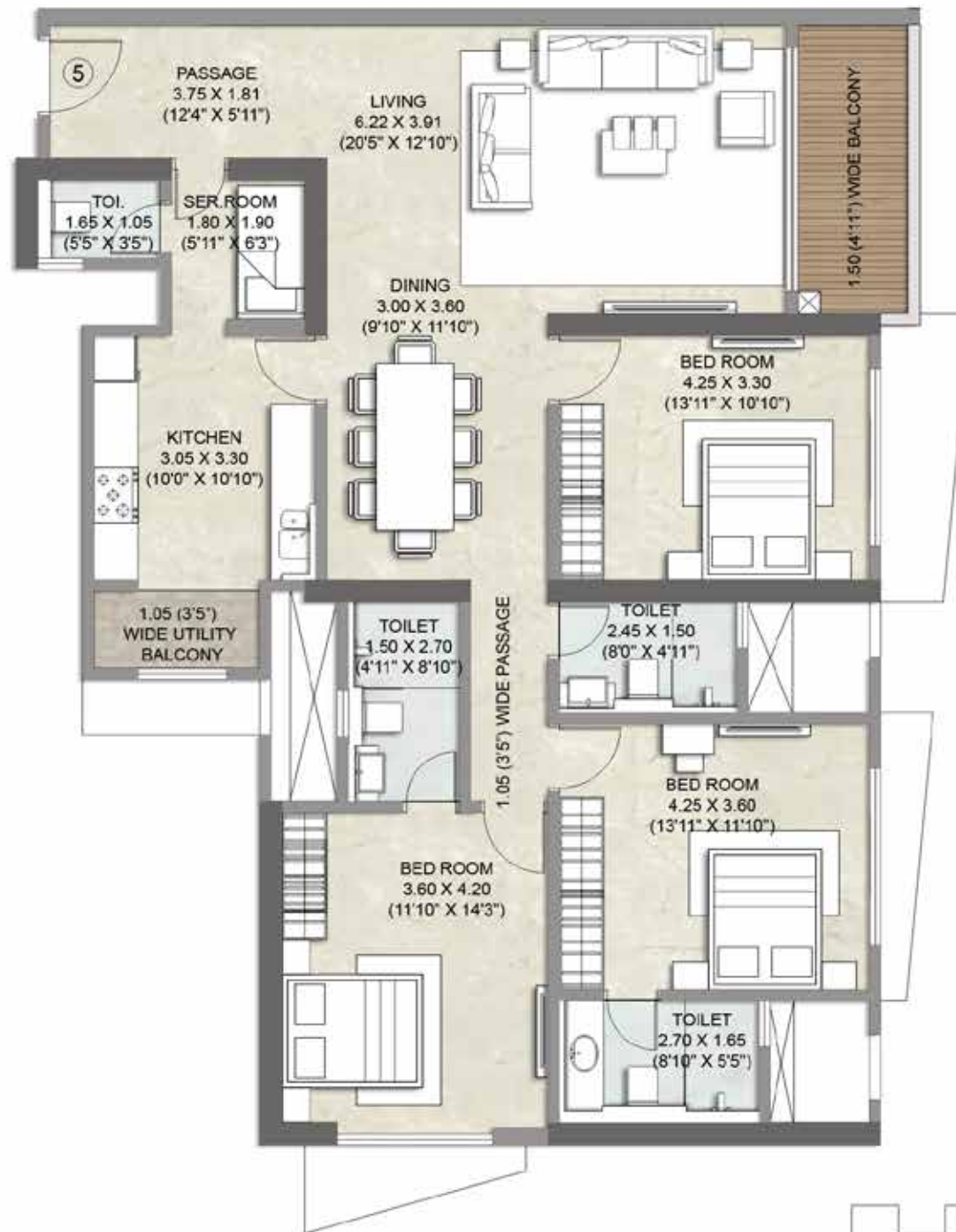
# WING A

## APARTMENT NO. 4: 3 BHK



# WING A

## APARTMENT NO. 5: 3 BHK



# AMENITIES\*

## FOR 2 & 3 BHK IN WING A

### APARTMENT FEATURES

- Entrance passage / foyer in each apartment
- Split AC in living / dining and bedrooms.
- Servants room with attached toilet in 3 BHK apartments
- Imported marble flooring in living, dining, passage and bedrooms
- Skid resistant tile flooring in balcony
- Vitrified tile flooring in the servants room and toilet
- Laminate-finished entrance door and paint-finished internal doors
- Gypsum-finished internal walls with low Volatile Organic Compound (VOC) acrylic paint
- Powder coated aluminium sliding window with glass railing
- Lighting scenario smart switches for Living, Dining and all bedrooms
- HDMI port in the master bedroom
- Synchronised light at main door
- VDP system at apartment entrance

### KITCHEN FEATURES

- Granite flooring
- Granite main platform
- Additional service platform
- Tile dado above the platforms
- Single bowl stainless steel kitchen sink with drain board
- Exhaust fan
- Utility Balcony

### BATHROOM FEATURES

- Imported marble flooring in all bathrooms except servants' toilet
- Combination of Imported marble dado and designer tile dado up to door height in master bathroom
- Designer tile dado up to door height in all other bathrooms except servants' toilet
- Glass partition and rain shower in the master bathroom
- Premium sanitary and CP fittings
- Exhaust fan
- Storage water heater in all bathrooms except servants' toilet

## FOR 4 BHK IN WING A

---

### APARTMENT FEATURES

- Entrance foyer / passage in each apartment
- Split AC in living / dining and bedrooms.
- Servants room with attached toilet
- Imported marble flooring in living, dining and passage
- Living room balcony with aluminium glass railing
- Laminate finish entrance door with digital lock and paint finished internal doors
- Skid resistant tile flooring in balcony
- Vitrified tile flooring in the servants room and toilet
- Wooden flooring in the bedrooms
- Gypsum-finished internal walls with low Volatile Organic Compound (VOC) acrylic paint
- Powder coated aluminium sliding window with glass railing
- Lighting scenario smart switches for Living, Dining and all bedrooms
- HDMI port in the master bedroom
- Synchronised light at main door
- VDP system at apartment entrance
- Premium brand switches

### KITCHEN FEATURES

- Imported quartz-based agglomerated marble kitchen platform, dado and flooring
- Additional service platform
- Twin-bowl Stainless steel kitchen sink with drain board
- Modular kitchen with water purifier, hob chimney, microwave and oven
- Utility Balcony
- Equipped with CNG, LPG leak detector & heat / smoke detectors
- Exhaust fan

### BATHROOM FEATURES

- Imported marble flooring and Dado in all the bathrooms except servants' toilet
- Fixed glass partition with glass door in all the bathrooms except servants' toilet
- Premium sanitary and CP fittings
- Exhaust fan
- Storage water heater in all bathrooms and geyser in servants' toilet