



Artistic Impression

## LEGEND- Terrace Floor:

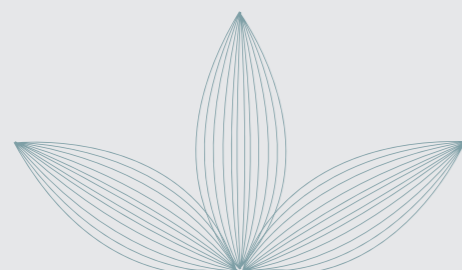
- |                              |                          |                           |                     |
|------------------------------|--------------------------|---------------------------|---------------------|
| 1) Entrance Plaza            | 5) Flower Bays           | 9) Yoga / Meditation Deck | 13) Hibiscus Garden |
| 2) Party Lawn and Party Deck | 6) Outdoor Workout Space | 10) Pergola with Seating  | 14) Gazebo          |
| 3) Urban Seating             | 7) Kids Play Area        | 11) Feature Wall          | 15) Seating Cove    |
| 4) Walking Track             | 8) Festival Court        | 12) Rose Garden           |                     |

# Ground Floor Plan



AREA STATEMENT IN SQ.M. & SQ.FT.

SHOP NO.	TYPE	CARPET AREA	
		SQ.M	SQ.FT
1	SHOP	12.88	138.64
2	SHOP	13.88	149.40
3	SHOP	13.39	144.13
4	SHOP	13.26	142.73
5	SHOP	13.88	149.40
6	SHOP	13.25	142.62



\*NOTE : "Carpet area" means the net usable floor area of an apartment, excluding the area covered by the external walls, areas under services shafts, exclusive balcony or verandah area and exclusive open terrace area, but includes the area covered by the internal partition walls of the apartment. Internal columns / shear walls embedded as a part of internal partition walls are included in carpet area.

# 1<sup>st</sup> Floor Plan

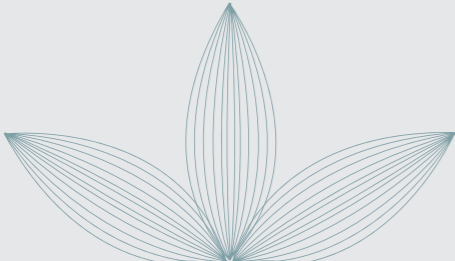


FOR INTERNAL USE ONLY

FOR INTERNAL USE ONLY

AREA STATEMENT IN SQ.M. & SQ.FT.

FLAT NO.	TYPE	CARPET AREA	
		SQ.M	SQ.FT
1	2 BHK	67.54	727



MAHARera Reg No. : P51800045731  
 maharera.mahaonline.gov.in



\*NOTE : "Carpet area" means the net usable floor area of an apartment, excluding the area covered by the external walls, areas under services shafts, exclusive balcony or verandah area and exclusive open terrace area, but includes the area covered by the internal partition walls of the apartment. Internal columns / shear walls embedded as a part of internal partition walls are included in carpet area.

# 2<sup>nd</sup> Floor Plan

FOR INTERNAL USE ONLY

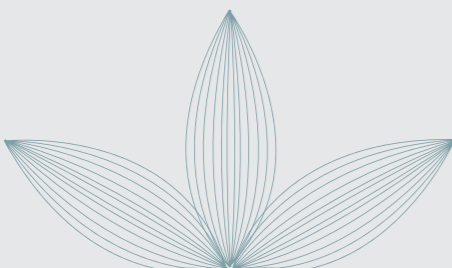


FOR INTERNAL USE ONLY

FOR INTERNAL USE ONLY

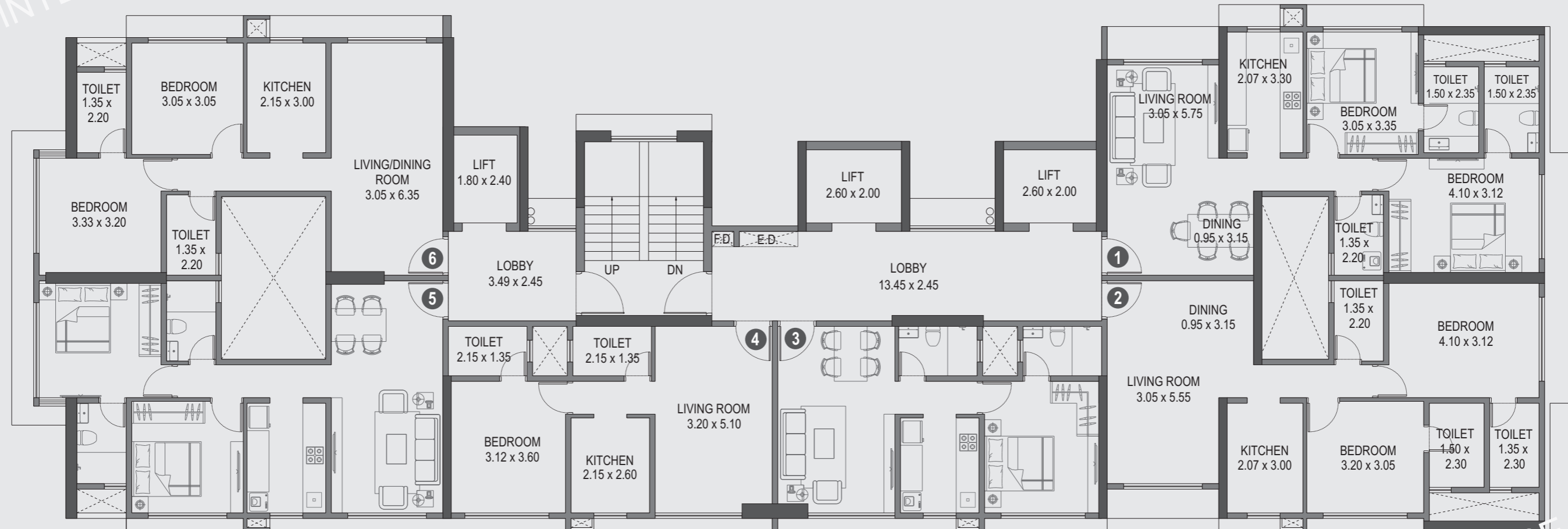
AREA STATEMENT IN SQ.M. & SQ.FT.

FLAT NO.	TYPE	CARPET AREA	
		SQ.M	SQ.FT
1	2 BHK	67.54	727.00
2	2 BHK	65.22	702.00
3	1 BHK	43.38	467.00
4	1 BHK	43.38	467.00



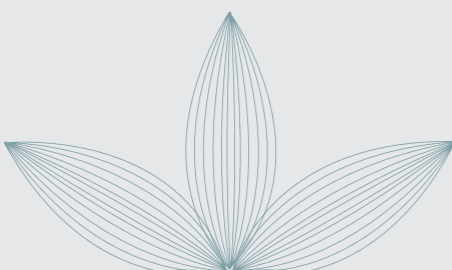
\*NOTE : "Carpet area" means the net usable floor area of an apartment, excluding the area covered by the external walls, areas under services shafts, exclusive balcony or verandah area and exclusive open terrace area, but includes the area covered by the internal partition walls of the apartment. Internal columns / shear walls embedded as a part of internal partition walls are included in carpet area.

# Typical 3<sup>rd</sup> to 7<sup>th</sup>, 9<sup>th</sup> to 14<sup>th</sup> Floor Plan



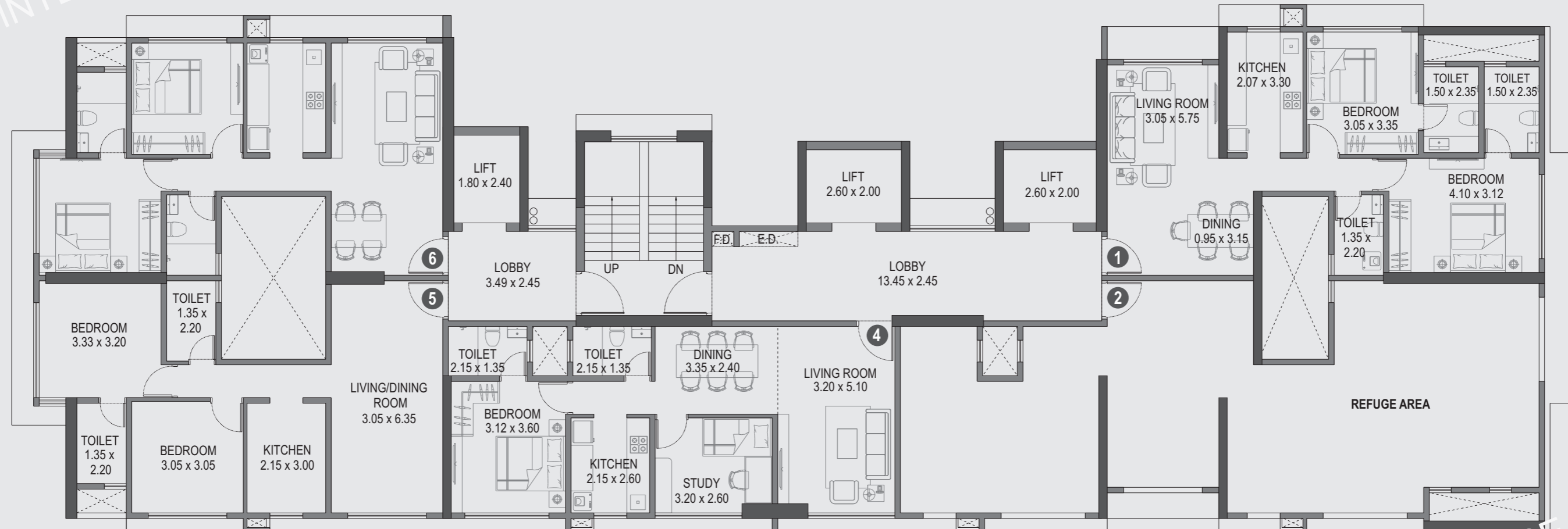
AREA STATEMENT IN SQ.M. & SQ.FT.

FLAT NO.	TYPE	CARPET AREA	
		SQ.M	SQ.FT
1	2 BHK	67.54	727.00
2	2 BHK	65.22	702.00
3	1 BHK	43.38	467.00
4	1 BHK	43.38	467.00
5	2 BHK	58.53	630.00
6	2 BHK	58.53	630.00



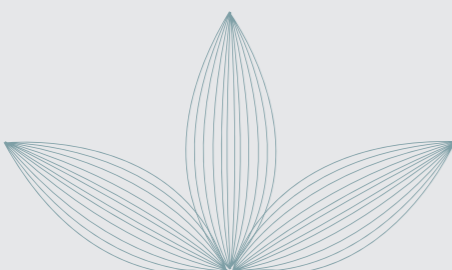
\*NOTE : "Carpet area" means the net usable floor area of an apartment, excluding the area covered by the external walls, areas under services shafts, exclusive balcony or verandah area and exclusive open terrace area, but includes the area covered by the internal partition walls of the apartment. Internal columns / shear walls embedded as a part of internal partition walls are included in carpet area.

# 8<sup>th</sup> Refuge Floor Plan



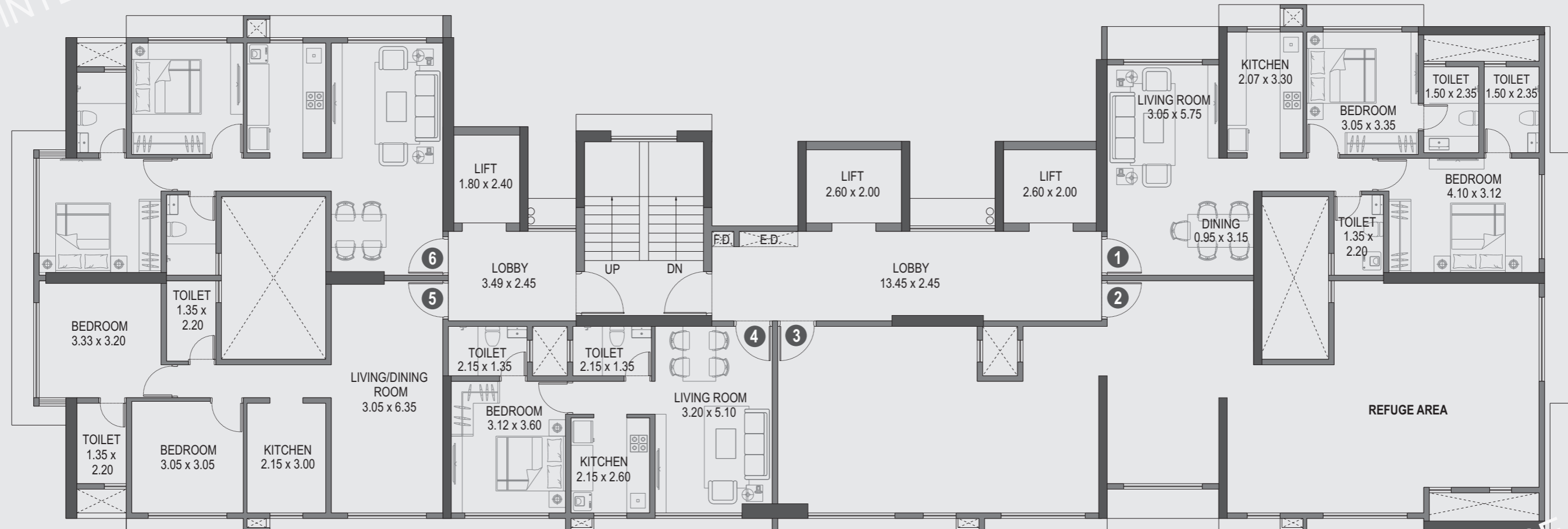
AREA STATEMENT IN SQ.M. & SQ.FT.

FLAT NO.	TYPE	CARPET AREA	
		SQ.M	SQ.FT
1	2 BHK	67.54	727.00
2	REFUGE		
4	2BHK	60.48	651.00
5	2 BHK	58.53	630.00
6	2 BHK	58.53	630.00



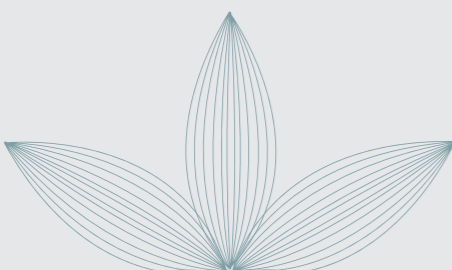
\*NOTE : "Carpet area" means the net usable floor area of an apartment, excluding the area covered by the external walls, areas under services shafts, exclusive balcony or verandah area and exclusive open terrace area, but includes the area covered by the internal partition walls of the apartment. Internal columns / shear walls embedded as a part of internal partition walls are included in carpet area.

# 15<sup>th</sup> Refuge Floor Plan



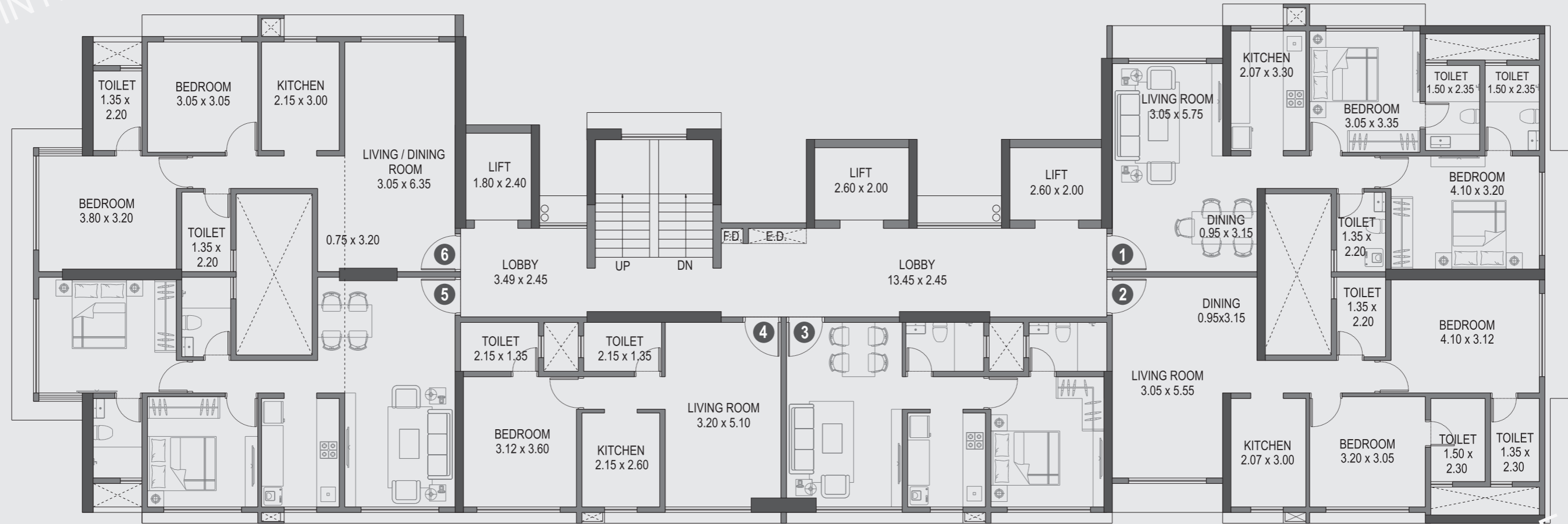
AREA STATEMENT IN SQ.M. & SQ.FT.

FLAT NO.	TYPE	CARPET AREA	
		SQ.M	SQ.FT
1	2 BHK	67.54	727.00
2, 3	REFUGE		
4	1BHK	43.38	467.00
5	2 BHK	58.53	630.00
6	2 BHK	58.53	630.00



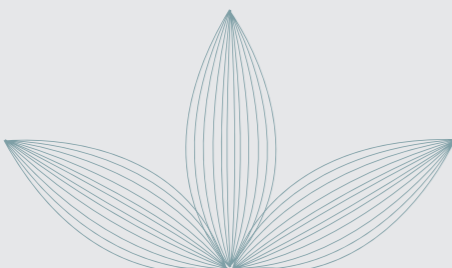
\*NOTE : "Carpet area" means the net usable floor area of an apartment, excluding the area covered by the external walls, areas under services shafts, exclusive balcony or verandah area and exclusive open terrace area, but includes the area covered by the internal partition walls of the apartment. Internal columns / shear walls embedded as a part of internal partition walls are included in carpet area.

# Typical 16<sup>th</sup> to 22<sup>nd</sup> Floor Plan



AREA STATEMENT IN SQ.M. & SQ.FT.

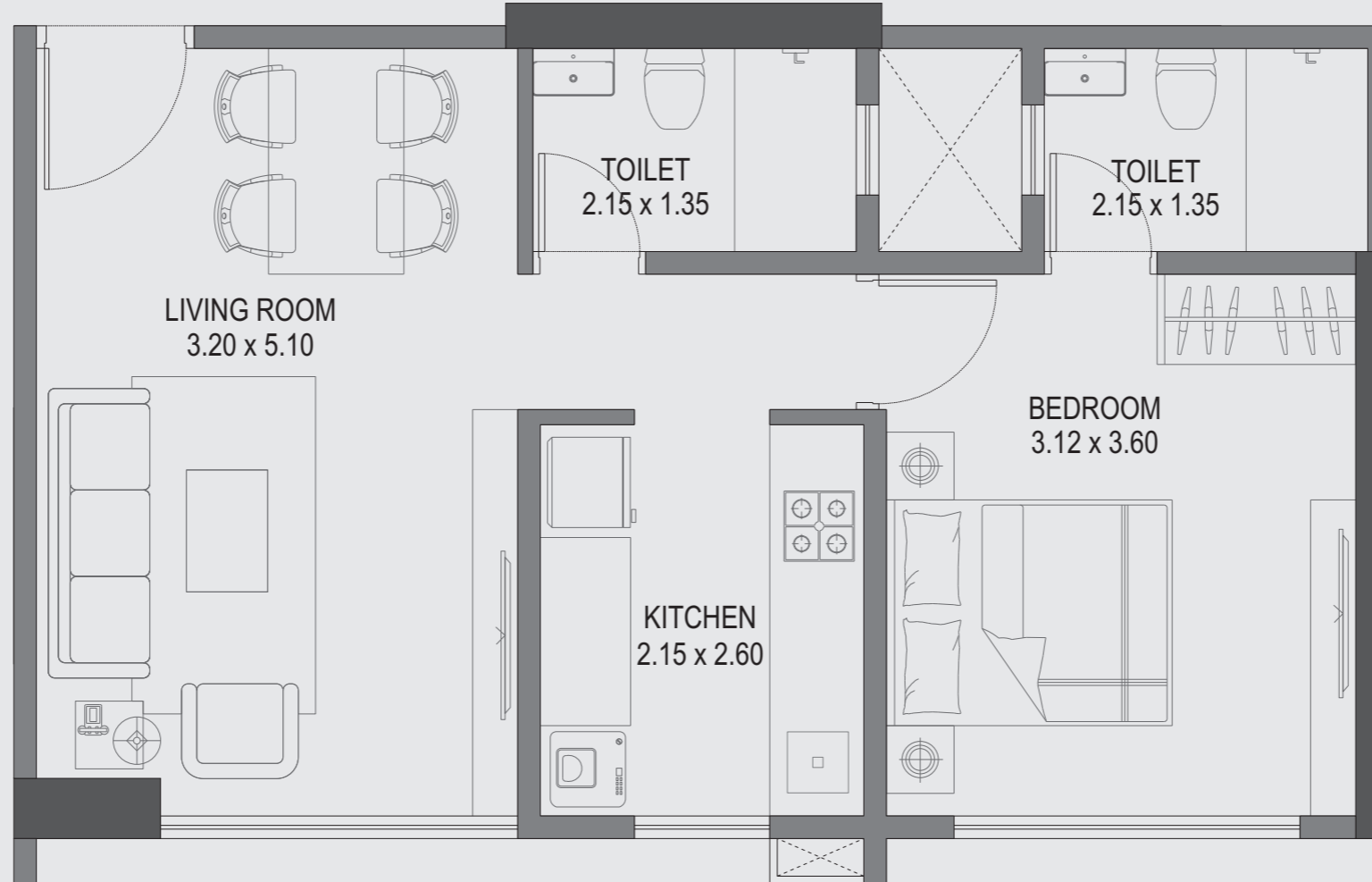
FLAT NO.	TYPE	CARPET AREA	
		SQ.M	SQ.FT
1	2 BHK	67.54	727.00
2	2 BHK	65.22	702.00
3	1 BHK	43.38	467.00
4	1 BHK	43.38	467.00
5	2 BHK	61.78	665.00
6	2 BHK	61.78	665.00



\*NOTE : "Carpet area" means the net usable floor area of an apartment, excluding the area covered by the external walls, areas under services shafts, exclusive balcony or verandah area and exclusive open terrace area, but includes the area covered by the internal partition walls of the apartment. Internal columns / shear walls embedded as a part of internal partition walls are included in carpet area.

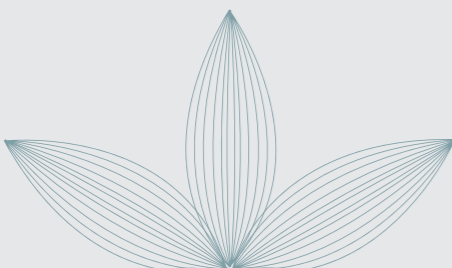


TYPICAL UNIT PLAN - 1 BHK



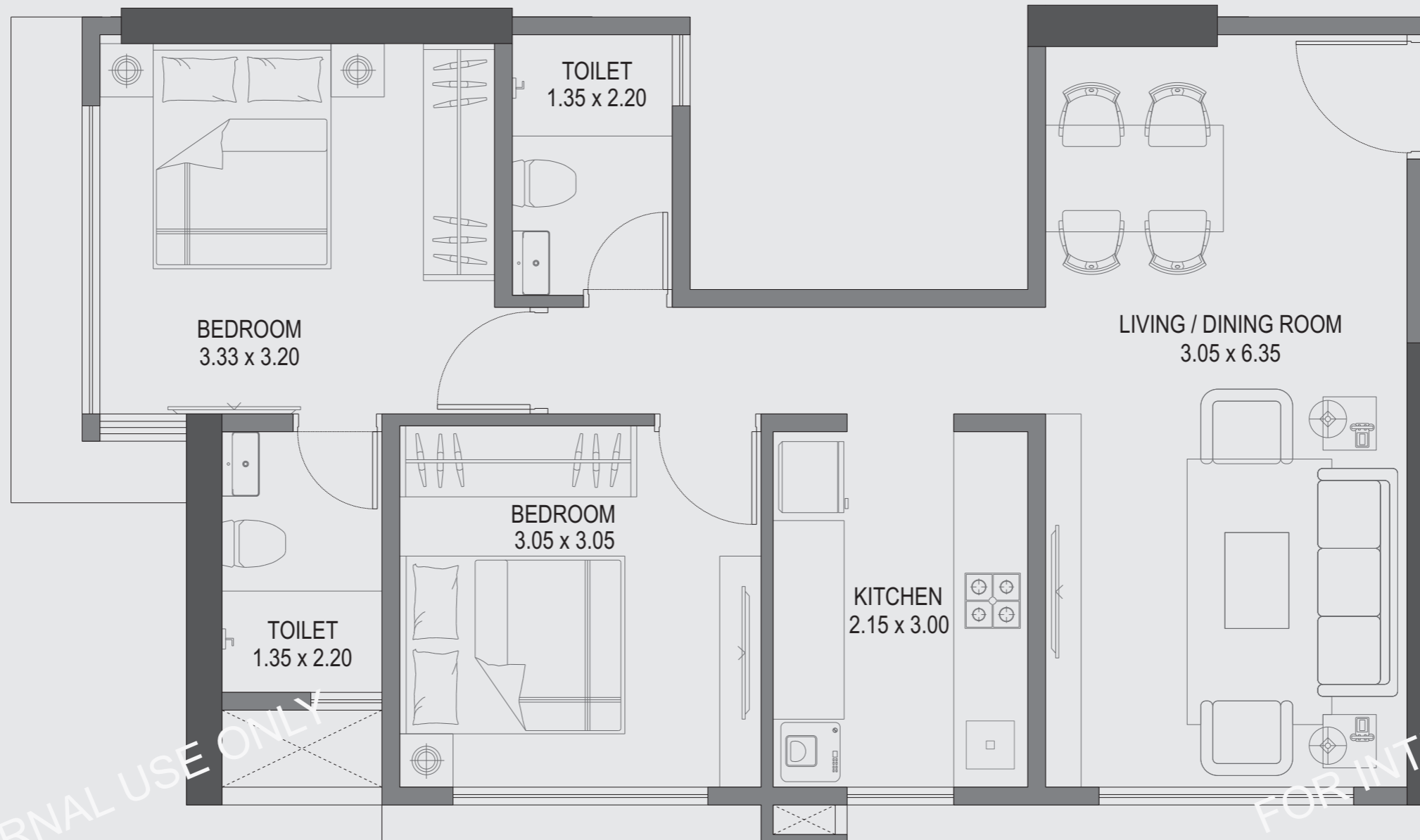
AREA STATEMENT IN SQ.M. & SQ.FT.

FLAT NO.	TYPE	CARPET AREA	
		SQ.M.	SQ.FT.
3	1 BHK	43.38	467



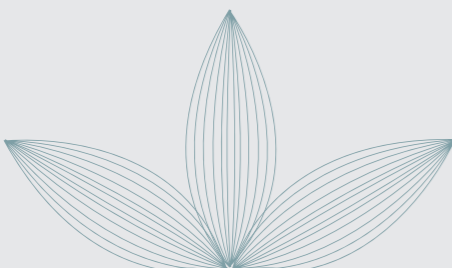
\*NOTE : "Carpet area" means the net usable floor area of an apartment, excluding the area covered by the external walls, areas under services shafts, exclusive balcony or verandah area and exclusive open terrace area, but includes the area covered by the internal partition walls of the apartment. Internal columns / shear walls embedded as a part of internal partition walls are included in carpet area.

TYPICAL UNIT PLAN - 2 BHK



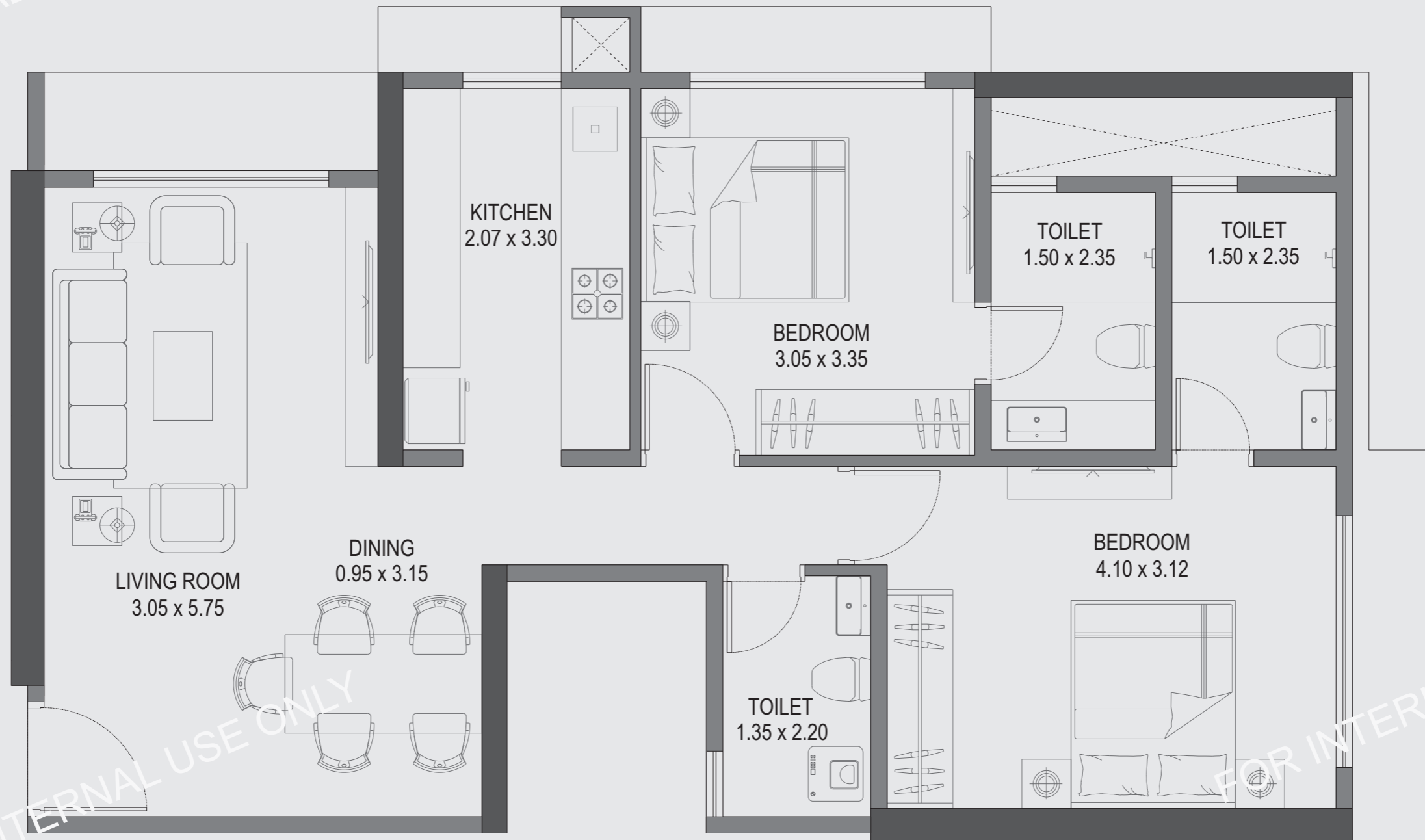
AREA STATEMENT IN SQ.M. & SQ.FT.

FLAT NO.	TYPE	CARPET AREA	
		SQ.M.	SQ.FT.
5	2 BHK	58.53	630



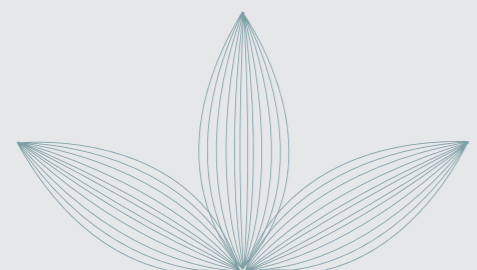
\*NOTE : "Carpet area" means the net usable floor area of an apartment, excluding the area covered by the external walls, areas under services shafts, exclusive balcony or verandah area and exclusive open terrace area, but includes the area covered by the internal partition walls of the apartment. Internal columns / shear walls embedded as a part of internal partition walls are included in carpet area.

# TYPICAL UNIT PLAN - 2 BHK



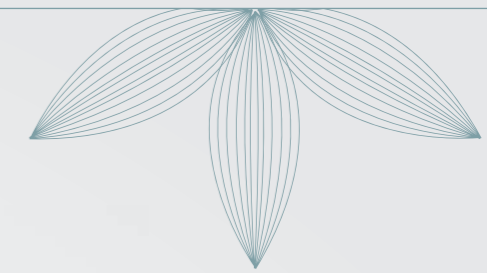
AREA STATEMENT IN SQ.M. & SQ.FT.

FLAT NO.	TYPE	CARPET AREA	
		SQ.M.	SQ.FT.
1	2 BHK	67.54	727



\*NOTE : "Carpet area" means the net usable floor area of an apartment, excluding the area covered by the external walls, areas under services shafts, exclusive balcony or verandah area and exclusive open terrace area, but includes the area covered by the internal partition walls of the apartment. Internal columns / shear walls embedded as a part of internal partition walls are included in carpet area.

# TYPICAL 1 BHK SECTION VIEW



FOR INTERNAL USE ONLY



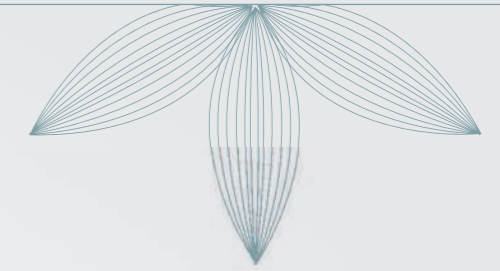
FOR INTERNAL USE ONLY

FOR INTERNAL USE ONLY



Carpet area: 43.38 sq.m (467 sq.ft)

TYPICAL **2 BHK** SECTION VIEW



FOR INTERNAL USE ONLY

FOR INTERNAL USE ONLY

FOR INTERNAL USE ONLY

Carpet area: 67.54 sq.m (727 sq.ft.)

