

# Typical Floor Plan

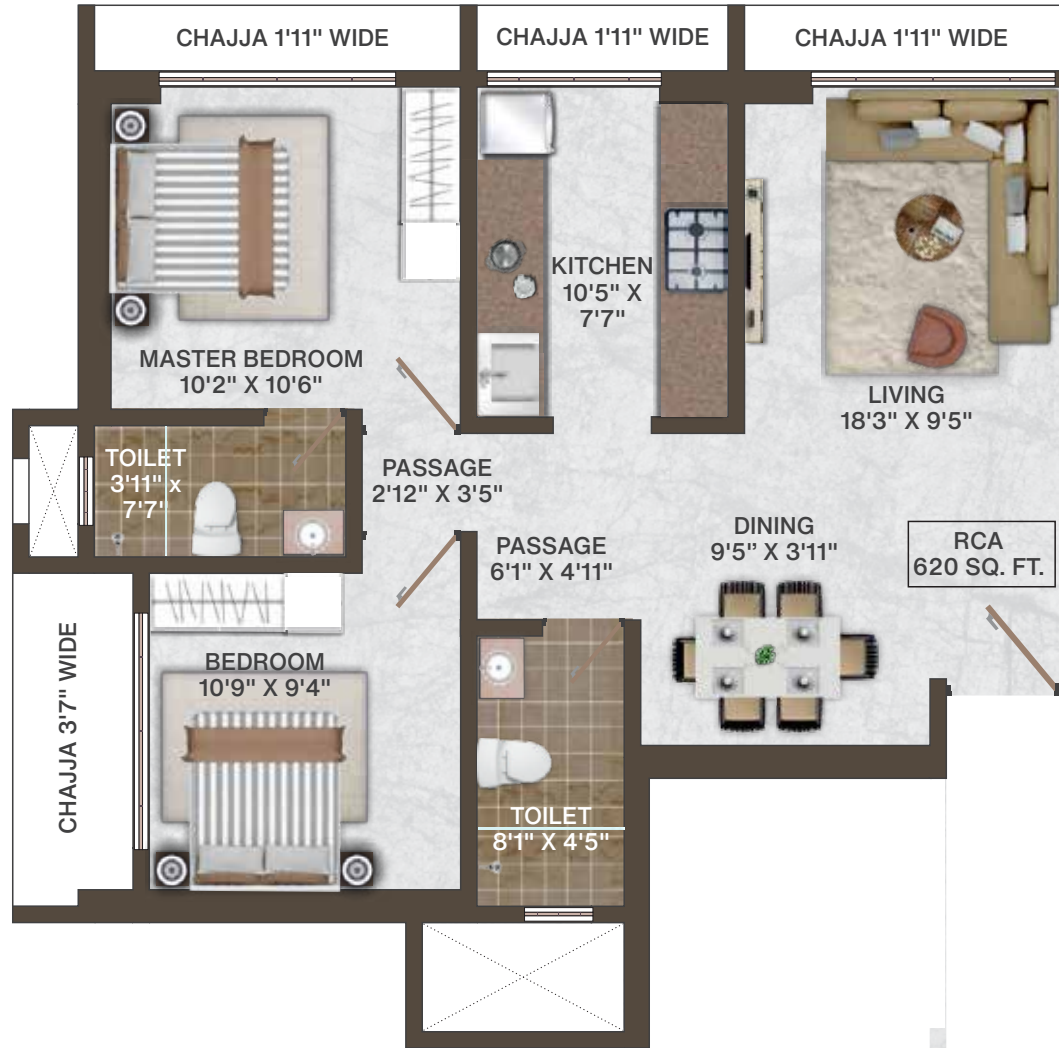


Disclaimer: The plans, designs, and dimensions are as per current sanctioned plans and approvals. Specifications, amenities, and facilities will be as set out in the agreement for sale as uploaded on the RERA website (<https://maharera.mahaonline.gov.in>) under Registration No. P51800030965. The same may be subject to modification/change/revision/alteration in terms of approvals, orders, directions and/or regulations of the concerned/relevant authorities, and/or for compliance with laws/regulations in force from time to time and/or in line with our customer policies. We may modify/alter the above by following due procedure as prescribed under the Real Estate (Regulation and Development) Act, 2016, ("RERA") read with the provisions of the Maharashtra Real Estate (Regulation and Development) (Registration of real estate projects, Registration of real estate agents, rates of interest and disclosures on website) Rules, 2017 and the Rules and Regulations framed under RERA for Maharashtra ("RERA Rules").

# Unit Plan - 1



2 BHK - RCA - 620 sq.ft.

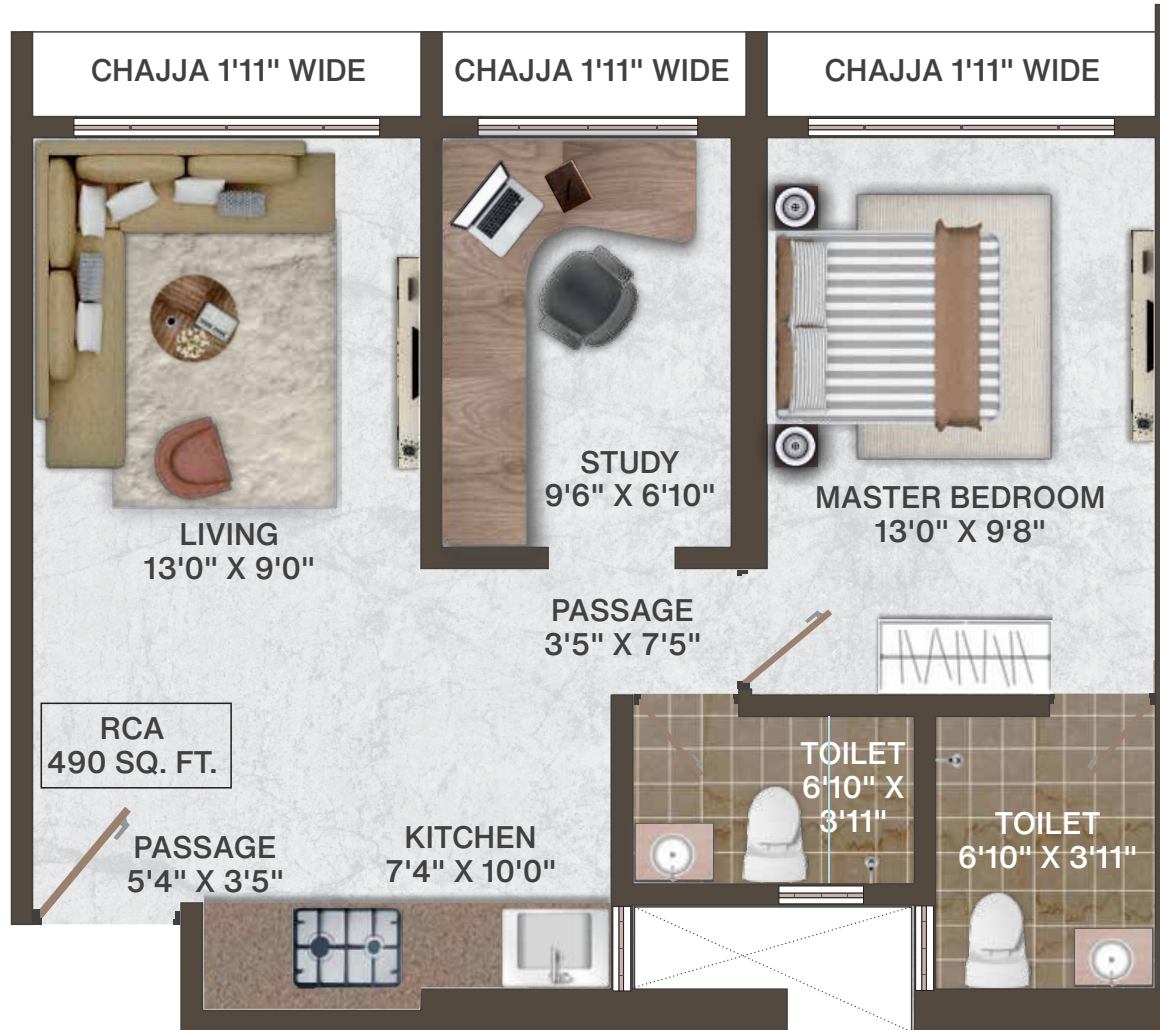


Disclaimer: The plans, designs, and dimensions are as per current sanctioned plans and approvals. Specifications, amenities, and facilities will be as set out in the agreement for sale as uploaded on the RERA website (<https://maharera.mahaonline.gov.in>) under Registration No. P51800030965. The same may be subject to modification/change/revision/alteration in terms of approvals, orders, directions and/or regulations of the concerned/relevant authorities, and/or for compliance with laws/regulations in force from time to time and/or in line with our customer policies. We may modify/alter the above by following due procedure as prescribed under the Real Estate (Regulation and Development) Act, 2016, ("RERA") read with the provisions of the Maharashtra Real Estate (Regulation and Development) (Registration of real estate projects, Registration of real estate agents, rates of interest and disclosures on website) Rules, 2017 and the Rules and Regulations framed under RERA for Maharashtra ("RERA Rules").

# Unit Plan - 2



1.5 BHK - RCA - 490 sq.ft.



Disclaimer: The plans, designs, and dimensions are as per current sanctioned plans and approvals. Specifications, amenities, and facilities will be as set out in the agreement for sale as uploaded on the RERA website (<https://maharera.mahaonline.gov.in>) under Registration No. P51800030965. The same may be subject to modification/change/revision/alteration in terms of approvals, orders, directions and/or regulations of the concerned/relevant authorities, and/or for compliance with laws/regulations in force from time to time and/or in line with our customer policies. We may modify/alter the above by following due procedure as prescribed under the Real Estate (Regulation and Development) Act, 2016, ("RERA") read with the provisions of the Maharashtra Real Estate (Regulation and Development) (Registration of real estate projects, Registration of real estate agents, rates of interest and disclosures on website) Rules, 2017 and the Rules and Regulations framed under RERA for Maharashtra ("RERA Rules").

# Unit Plan - 3



2 BHK - RCA - 700 sq.ft.



Disclaimer: The plans, designs, and dimensions are as per current sanctioned plans and approvals. Specifications, amenities, and facilities will be as set out in the agreement for sale as uploaded on the RERA website (<https://maharera.mahaonline.gov.in>) under Registration No. P51800030965. The same may be subject to modification/change/revision/alteration in terms of approvals, orders, directions and/or regulations of the concerned/relevant authorities, and/or for compliance with laws/regulations in force from time to time and/or in line with our customer policies. We may modify/alter the above by following due procedure as prescribed under the Real Estate (Regulation and Development) Act, 2016, ("RERA") read with the provisions of the Maharashtra Real Estate (Regulation and Development) (Registration of real estate projects, Registration of real estate agents, rates of interest and disclosures on website) Rules, 2017 and the Rules and Regulations framed under RERA for Maharashtra ("RERA Rules").

# Unit Plan - 4



2 BHK - RCA - 670 sq.ft.



Disclaimer: The plans, designs, and dimensions are as per current sanctioned plans and approvals. Specifications, amenities, and facilities will be as set out in the agreement for sale as uploaded on the RERA website (<https://maharera.mahaonline.gov.in>) under Registration No. P51800030965. The same may be subject to modification/change/revision/alteration in terms of approvals, orders, directions and/or regulations of the concerned/relevant authorities, and/or for compliance with laws/regulations in force from time to time and/or in line with our customer policies. We may modify/alter the above by following due procedure as prescribed under the Real Estate (Regulation and Development) Act, 2016, ("RERA") read with the provisions of the Maharashtra Real Estate (Regulation and Development) (Registration of real estate projects, Registration of real estate agents, rates of interest and disclosures on website) Rules, 2017 and the Rules and Regulations framed under RERA for Maharashtra ("RERA Rules").

# Unit Plan - 5



1 BHK - RCA - 435 sq.ft.

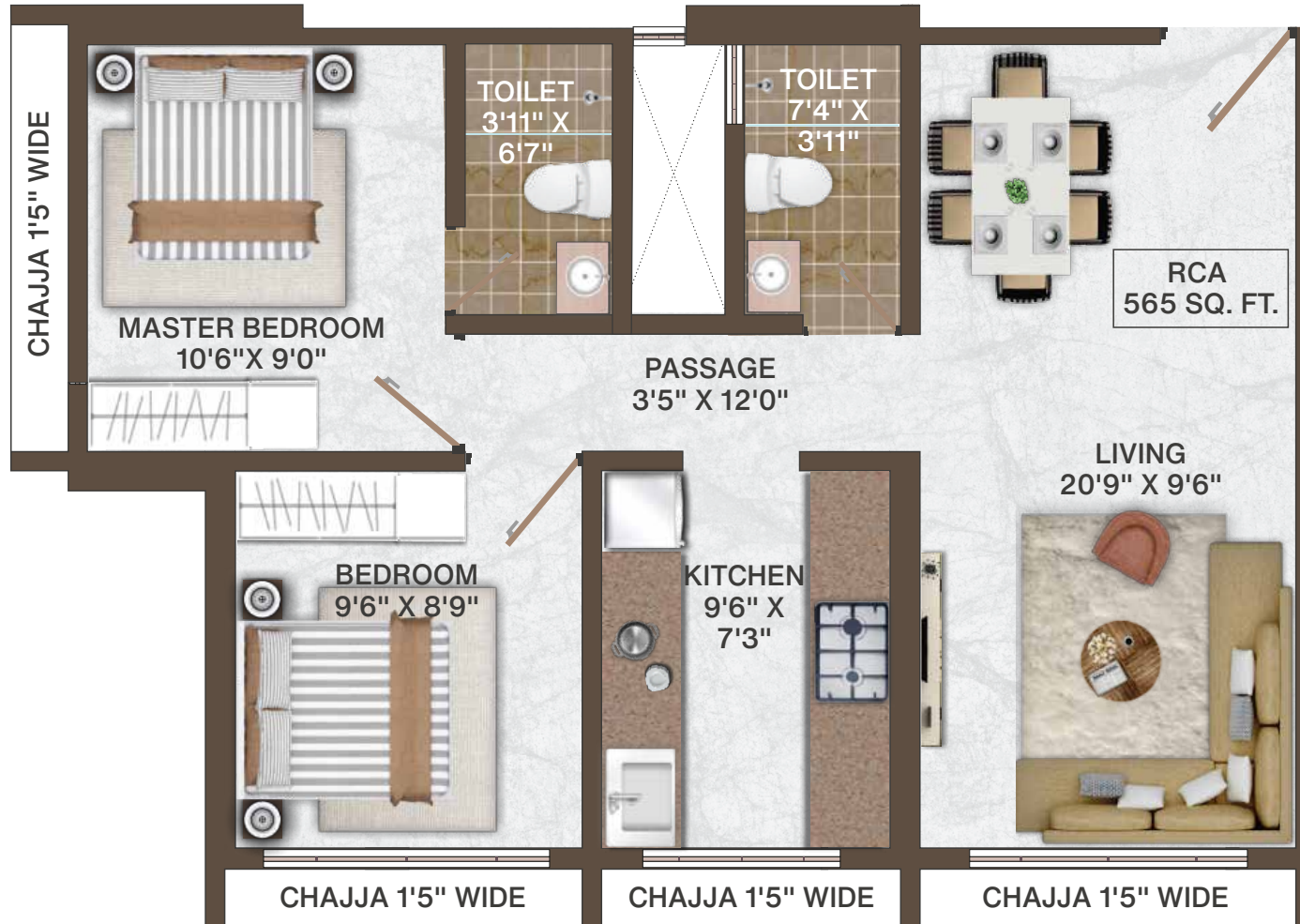


Disclaimer: The plans, designs, and dimensions are as per current sanctioned plans and approvals. Specifications, amenities, and facilities will be as set out in the agreement for sale as uploaded on the RERA website (<https://maharera.mahaonline.gov.in>) under Registration No. P51800030965. The same may be subject to modification/change/revision/alteration in terms of approvals, orders, directions and/or regulations of the concerned/relevant authorities, and/or for compliance with laws/regulations in force from time to time and/or in line with our customer policies. We may modify/alter the above by following due procedure as prescribed under the Real Estate (Regulation and Development) Act, 2016, ("RERA") read with the provisions of the Maharashtra Real Estate (Regulation and Development) (Registration of real estate projects, Registration of real estate agents, rates of interest and disclosures on website) Rules, 2017 and the Rules and Regulations framed under RERA for Maharashtra ("RERA Rules").

# Unit Plan - 6



2 BHK - RCA - 565 sq.ft.



Disclaimer: The plans, designs, and dimensions are as per current sanctioned plans and approvals. Specifications, amenities, and facilities will be as set out in the agreement for sale as uploaded on the RERA website (<https://maharera.mahaonline.gov.in>) under Registration No. P51800030965. The same may be subject to modification/change/revision/alteration in terms of approvals, orders, directions and/or regulations of the concerned/relevant authorities, and/or for compliance with laws/regulations in force from time to time and/or in line with our customer policies. We may modify/alter the above by following due procedure as prescribed under the Real Estate (Regulation and Development) Act, 2016, ("RERA") read with the provisions of the Maharashtra Real Estate (Regulation and Development) (Registration of real estate projects, Registration of real estate agents, rates of interest and disclosures on website) Rules, 2017 and the Rules and Regulations framed under RERA for Maharashtra ("RERA Rules").