

# 1 & 2BHK Apartments

With a home at Onyx, this could be the day you make the good life, your life, offering great connectivity to everything you need. Homes here come with a thoughtful layout that is modern and efficient at the same time.

The living and dining areas of your new home are combined to form a fluid space that echoes the trend of open-plan living.

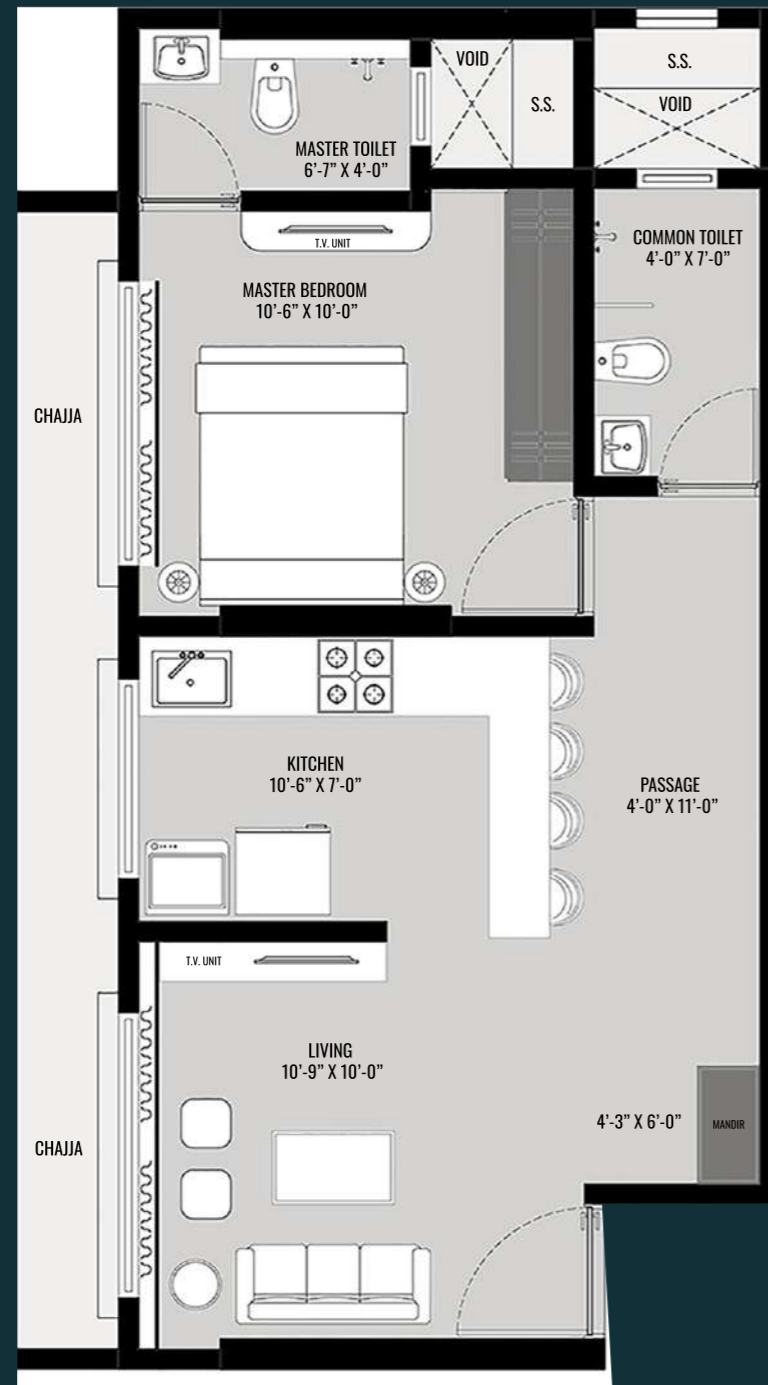
Your bedrooms here is airy and well-lit, offering stunning sunrise and sunset views and ample storage space. Similarly, the bathrooms are equipped with high-quality, white CP and Sanitary fixtures.

The kitchens are tailored to the size of each apartment and designed in a manner that accommodates all your desired kitchen appliances.

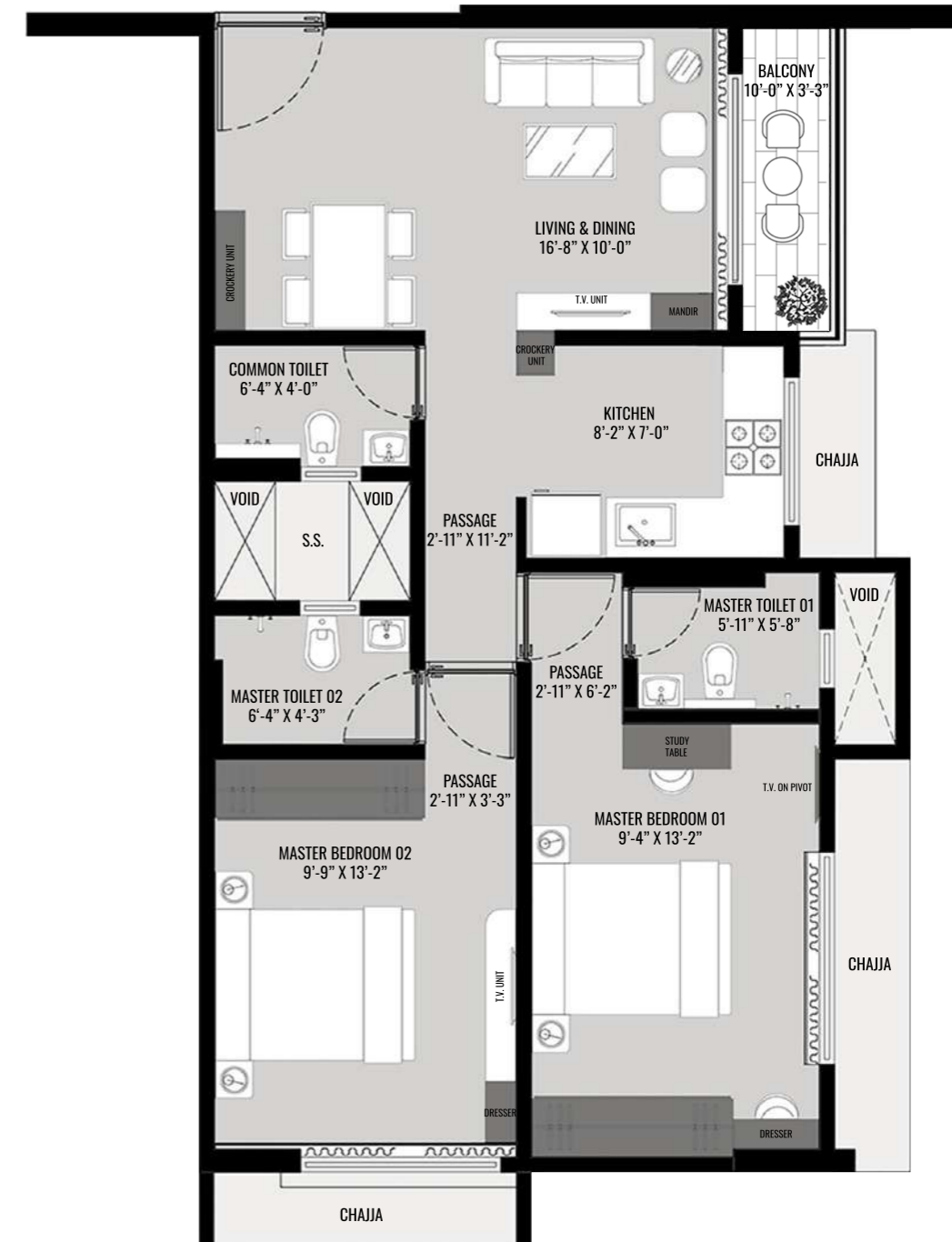


- 1BHK | R.C.A - 435 SQ.FT
- 1BHK WITH DECK | R.C.A - 477.4 SQ.FT
- 2BHK WITH DECK | R.C.A - 695 SQ.FT

TYPICAL FLOOR PLAN



1BHK | R.C.A - 435 SQ.FT



2BHK WITH DECK | R.C.A - 695SQ.FT