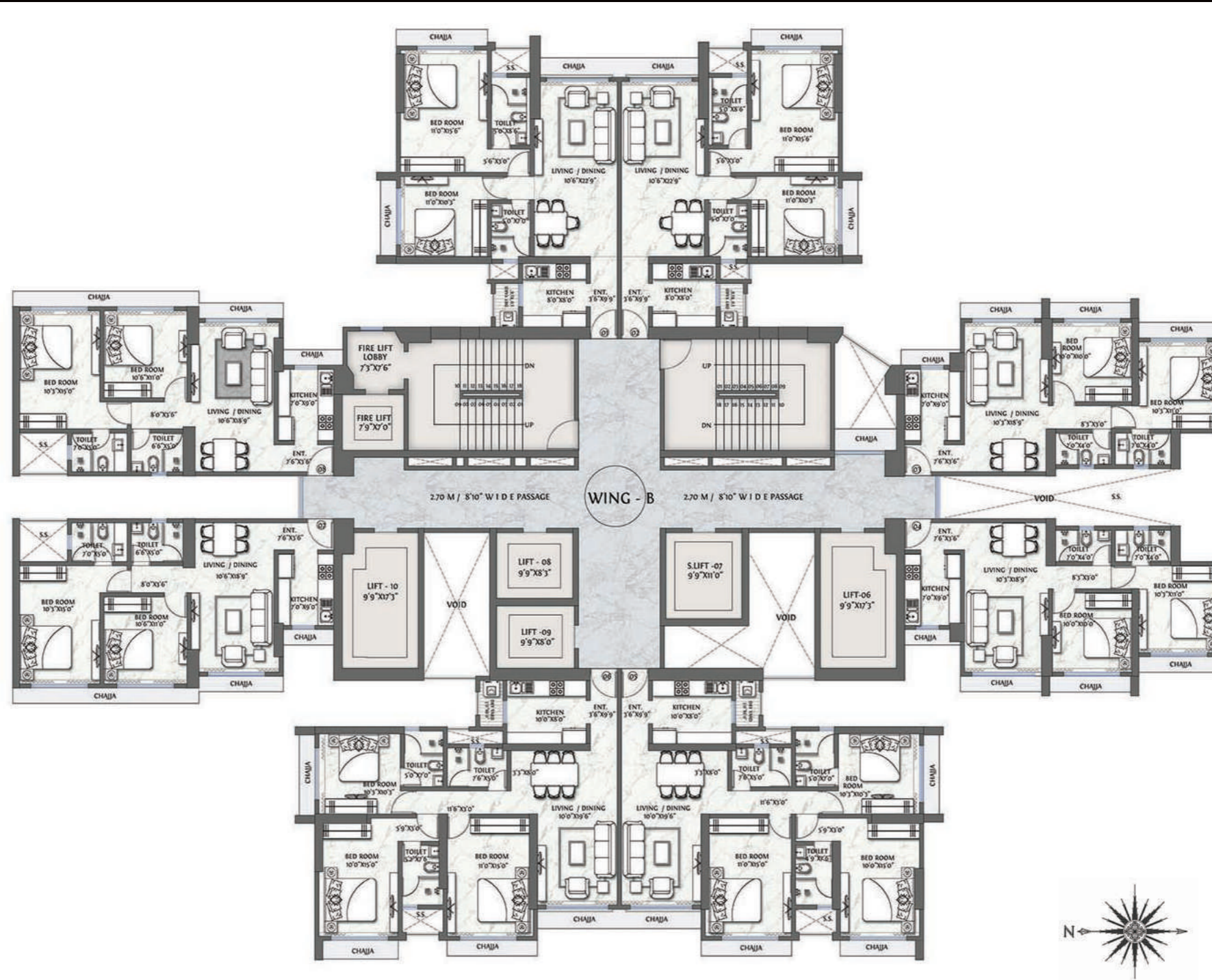
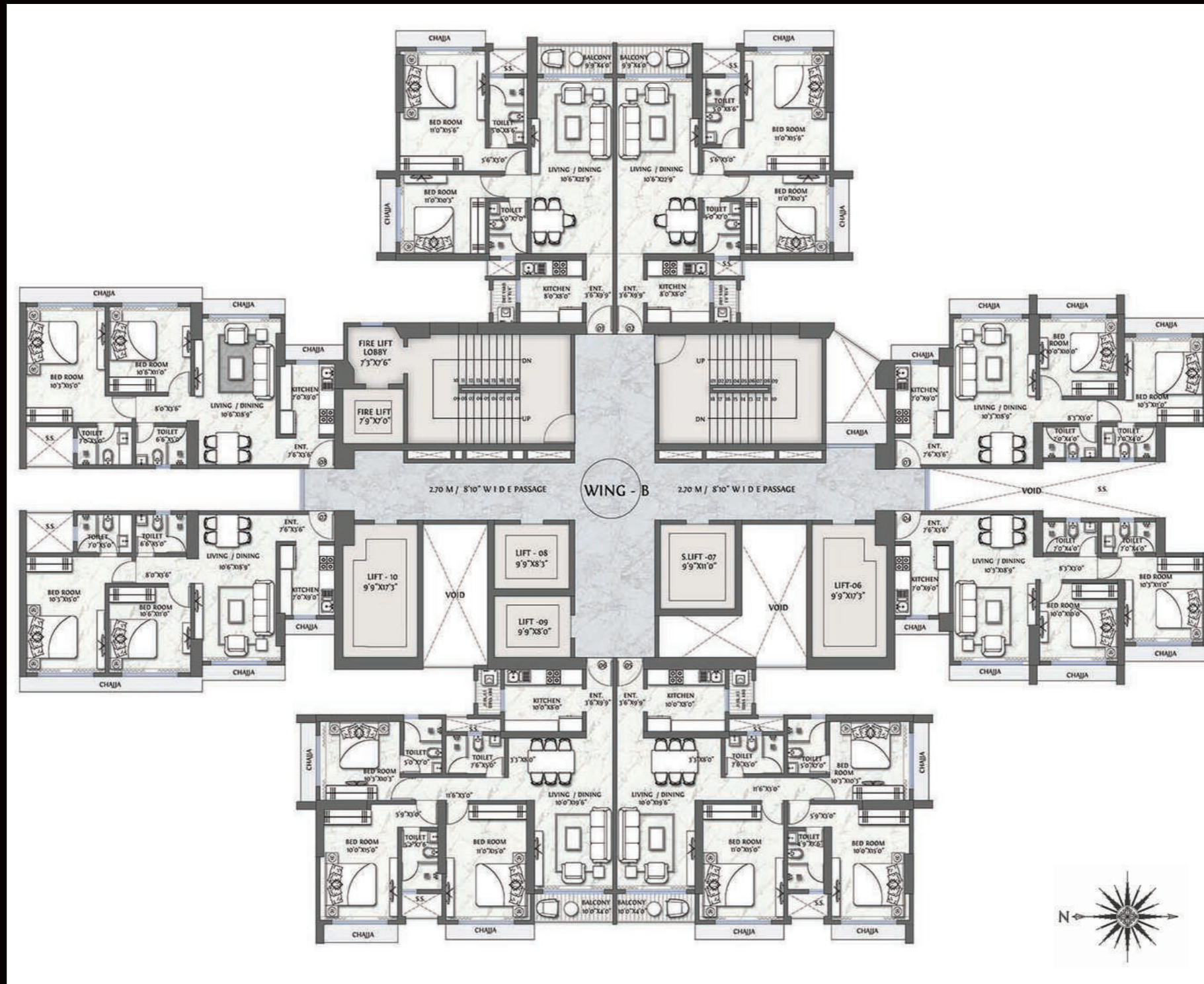


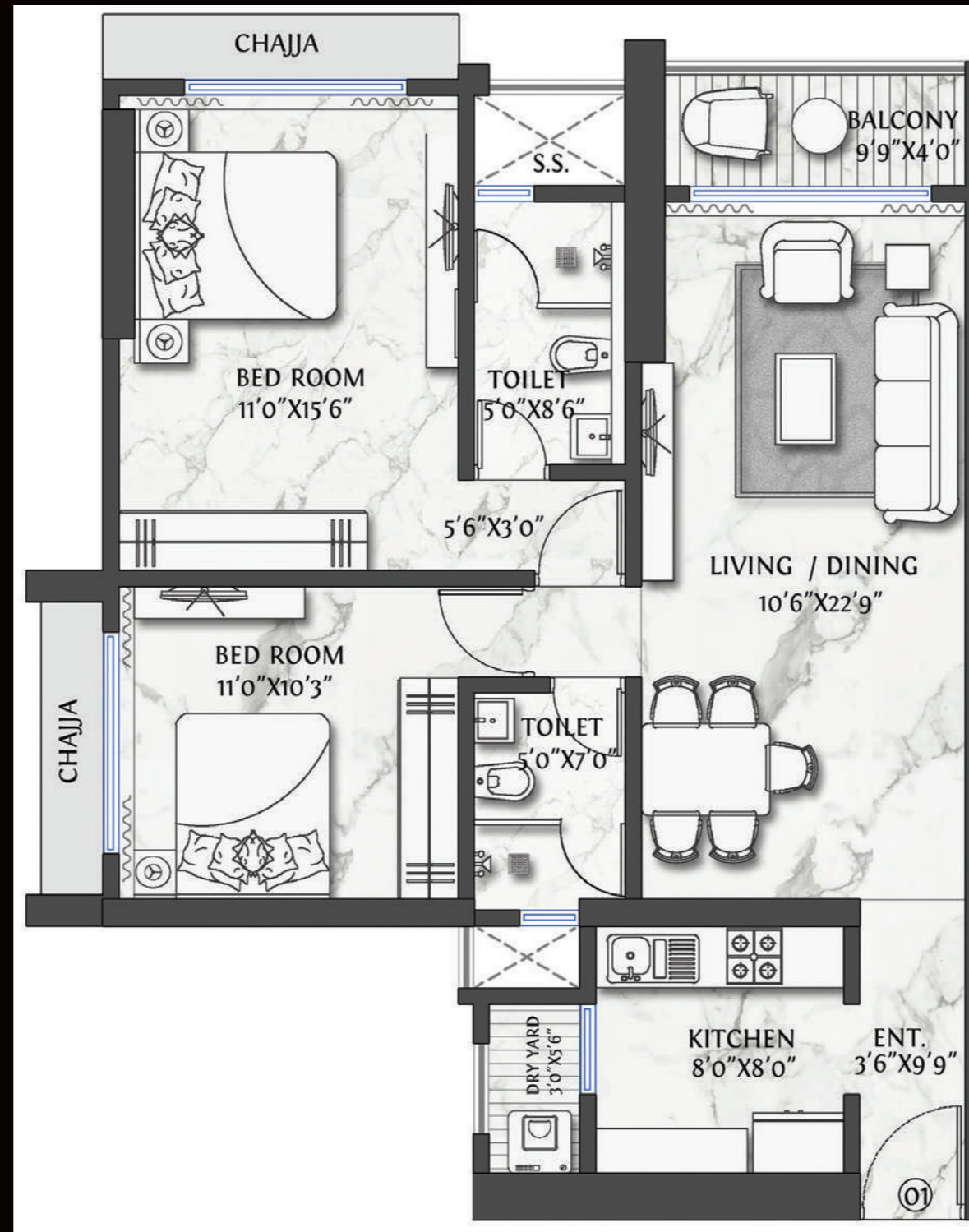
FLOOR PLAN WING - B (1st - 6th, 8th - 13th & 15th Floor)



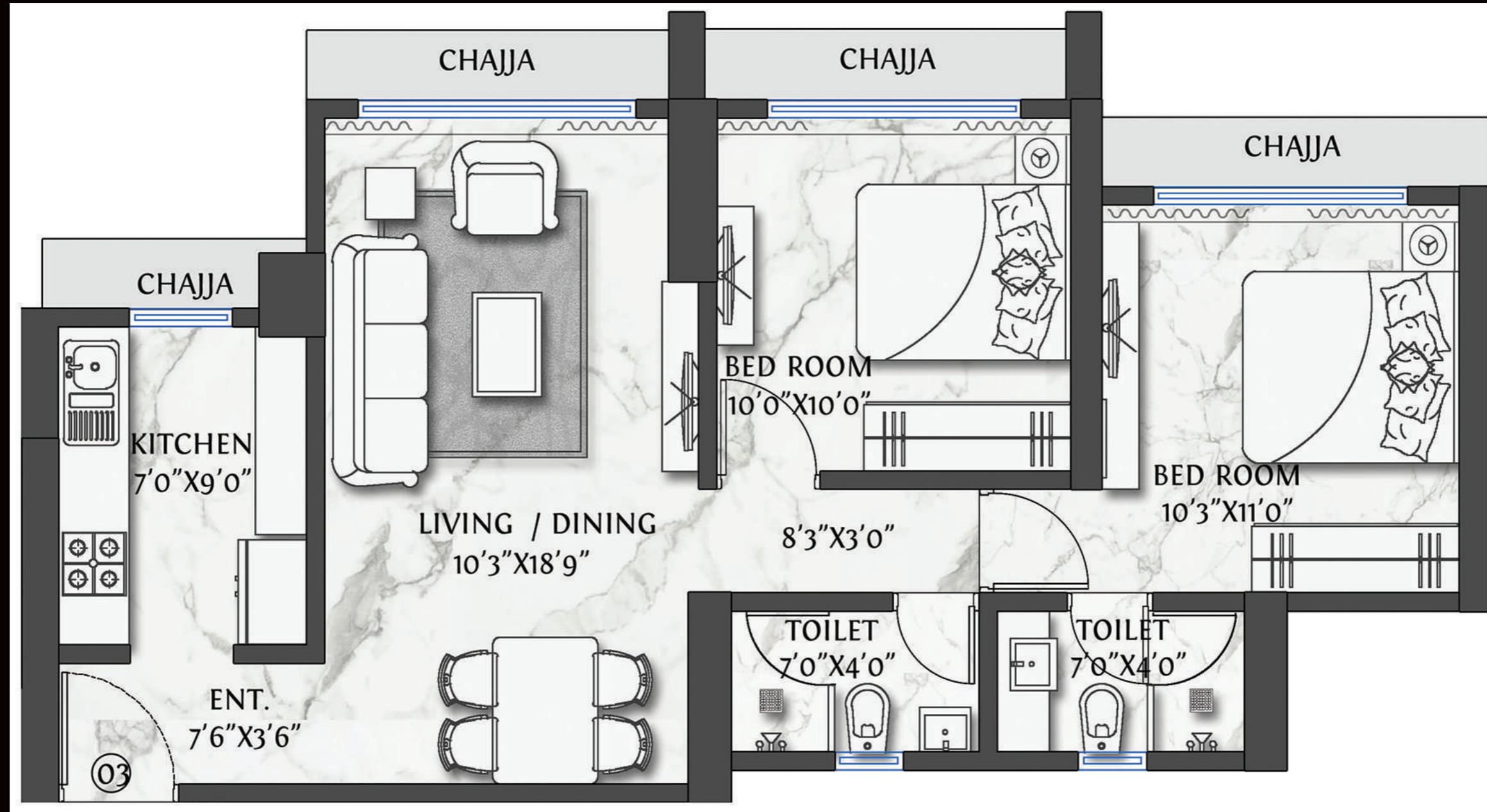
FLOOR PLAN WING - B (16th -20th, 22nd -27th & 29th -30th Floor)



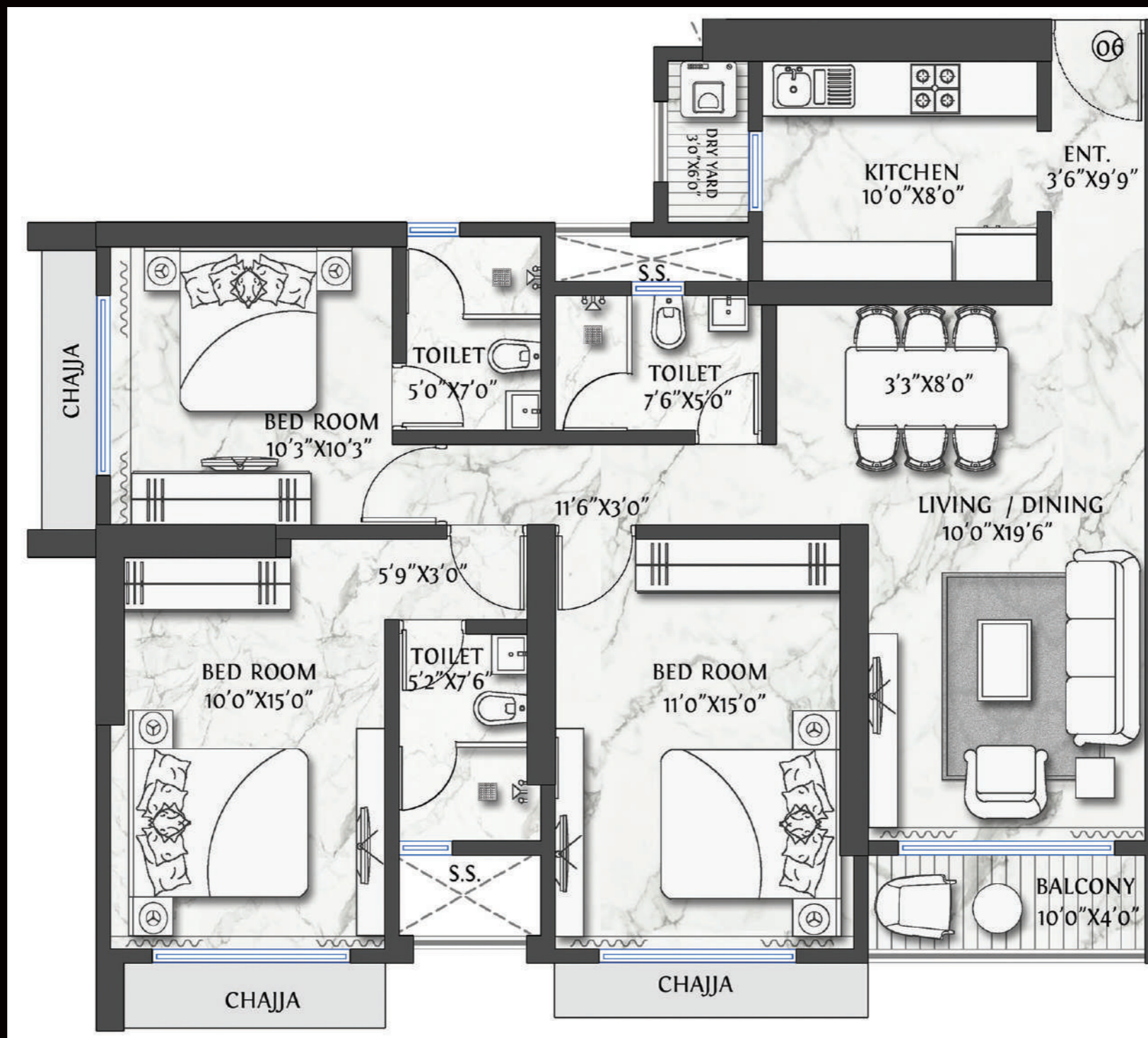
WING - B FLAT No. 1 (784 sq.ft., With Balcony 828 sq.ft.)



WING - B FLAT No. 3 (632 sq.ft.)



WING - B FLAT No. 6 (1005sq.ft., With Balcony 1044sq.ft.)



WING - B FLAT No. 8 (706sq.ft.)

