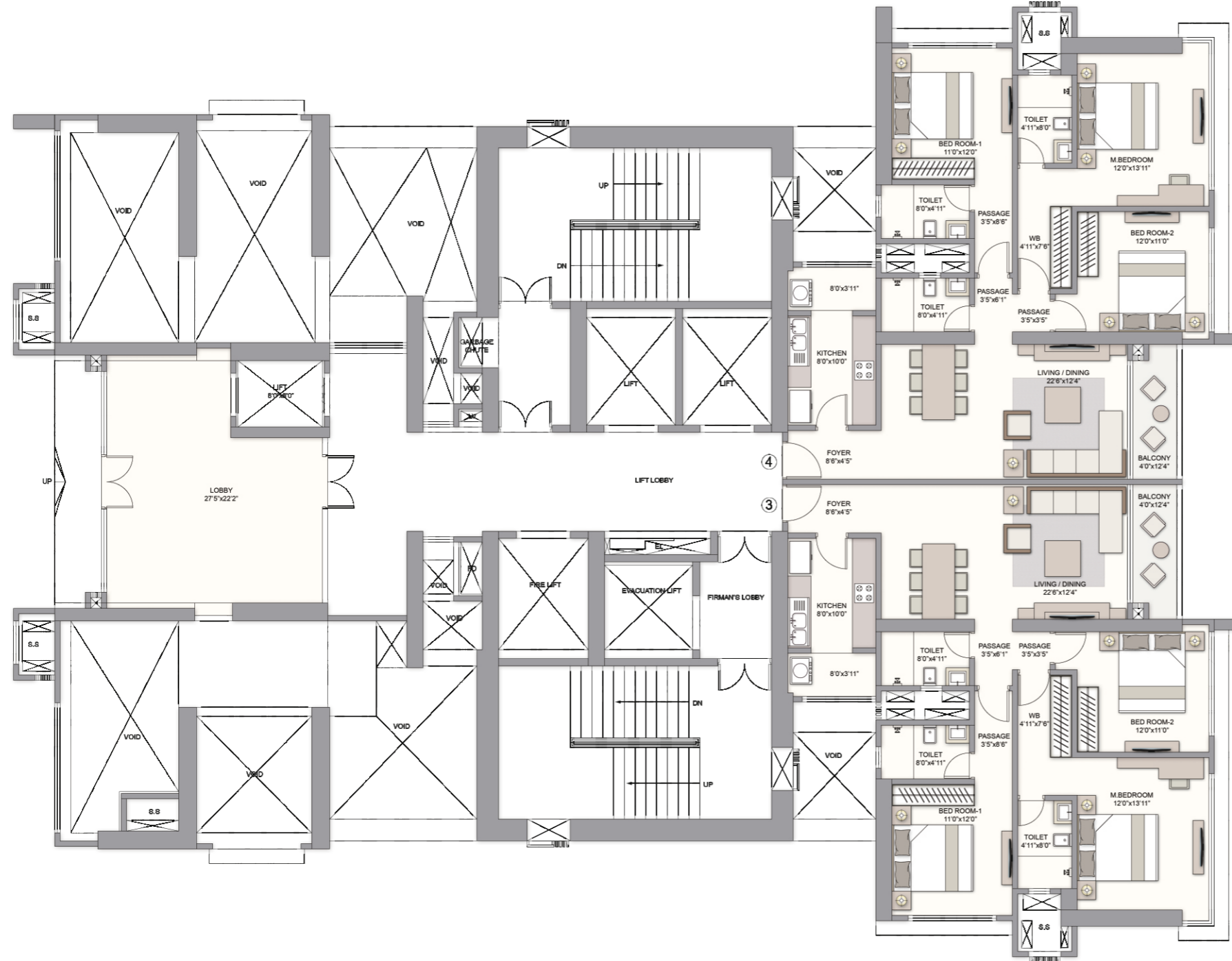


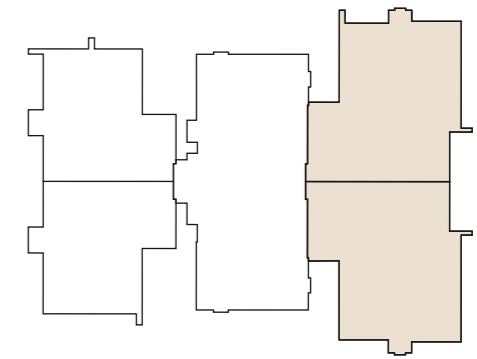
# EAST TOWER

## Typical Floor Plan

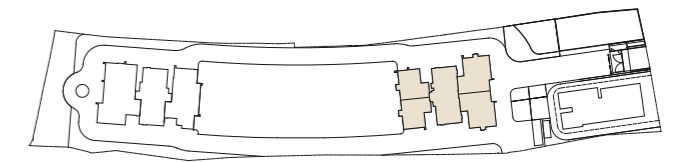
2nd to 6th, 8th & 9th Floor



### UNIT LOCATION



### TOWER LOCATION



A variance of (+/-) 3% in RERA carpet area may occur on account of planning constraints / site conditions / column / finishing. All these dimensions are unfinished structural dimensions. The furniture / fixtures indicated herein will not be a part of the standard offering.  
Maharera registration no.: P51900031285 | Available on website <https://maharera.mahaonline.gov.in>

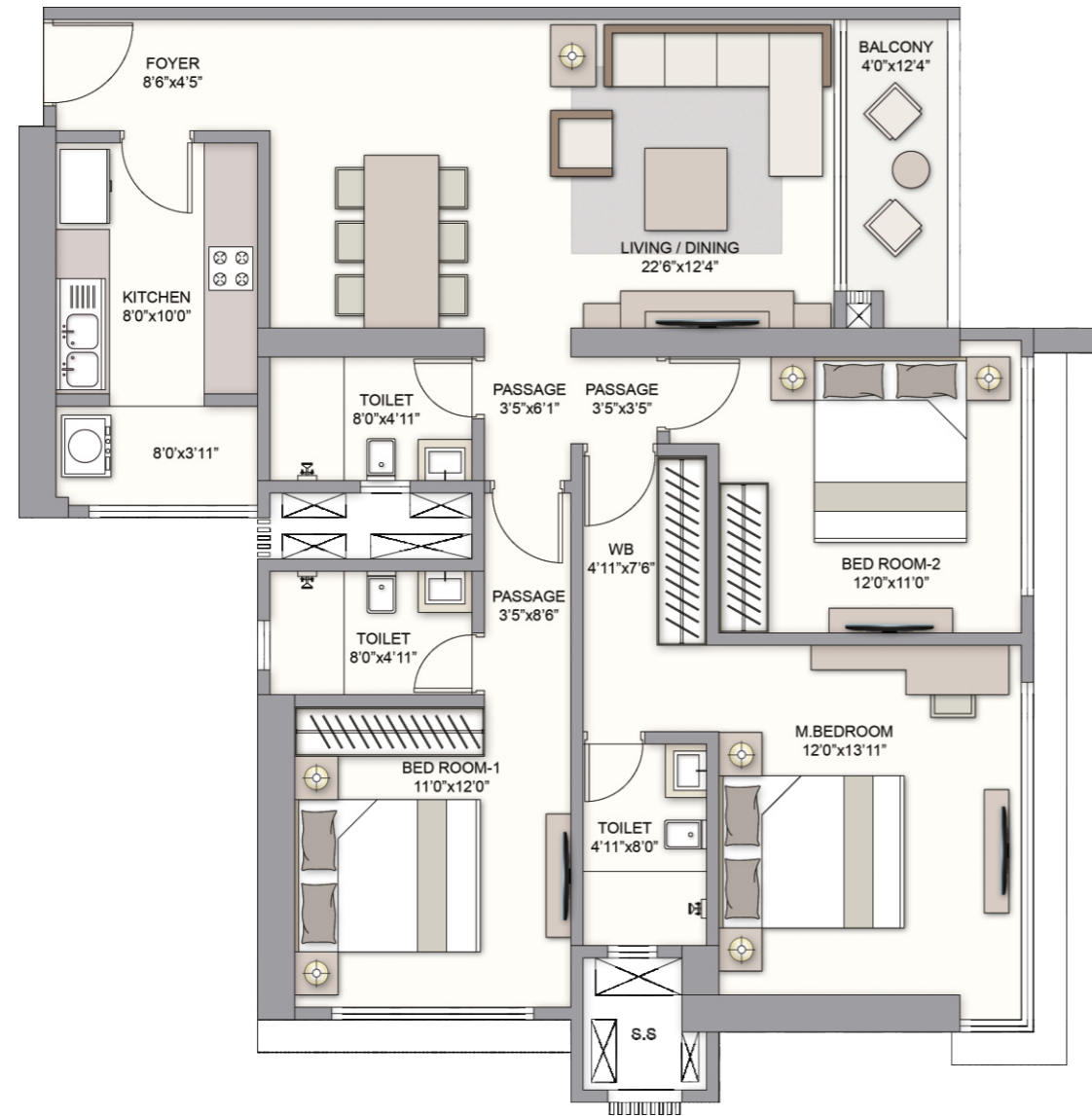
PRESTIGE  
**JASDAN**  
*Classic*

# EAST TOWER

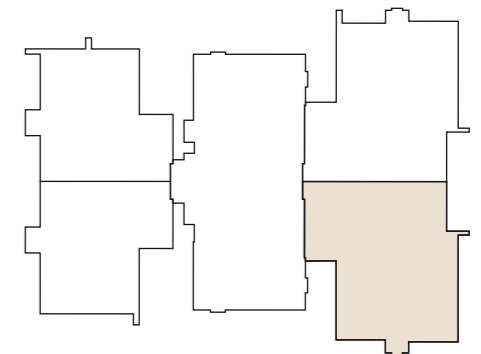
## 3 BED OPULENCE

Unit 3 - 2nd to 6th, 8th & 9th Floor

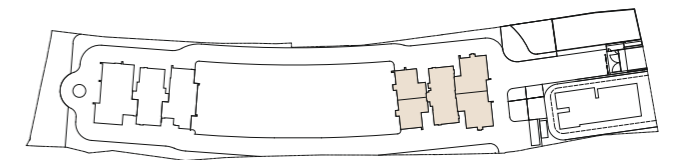
- ▶ RERA AREA 1196 Sq. Ft.
- ▶ BALCONY 49 Sq. Ft.
- ▶ TOTAL AREA 1245 Sq. Ft.



### UNIT LOCATION



### TOWER LOCATION



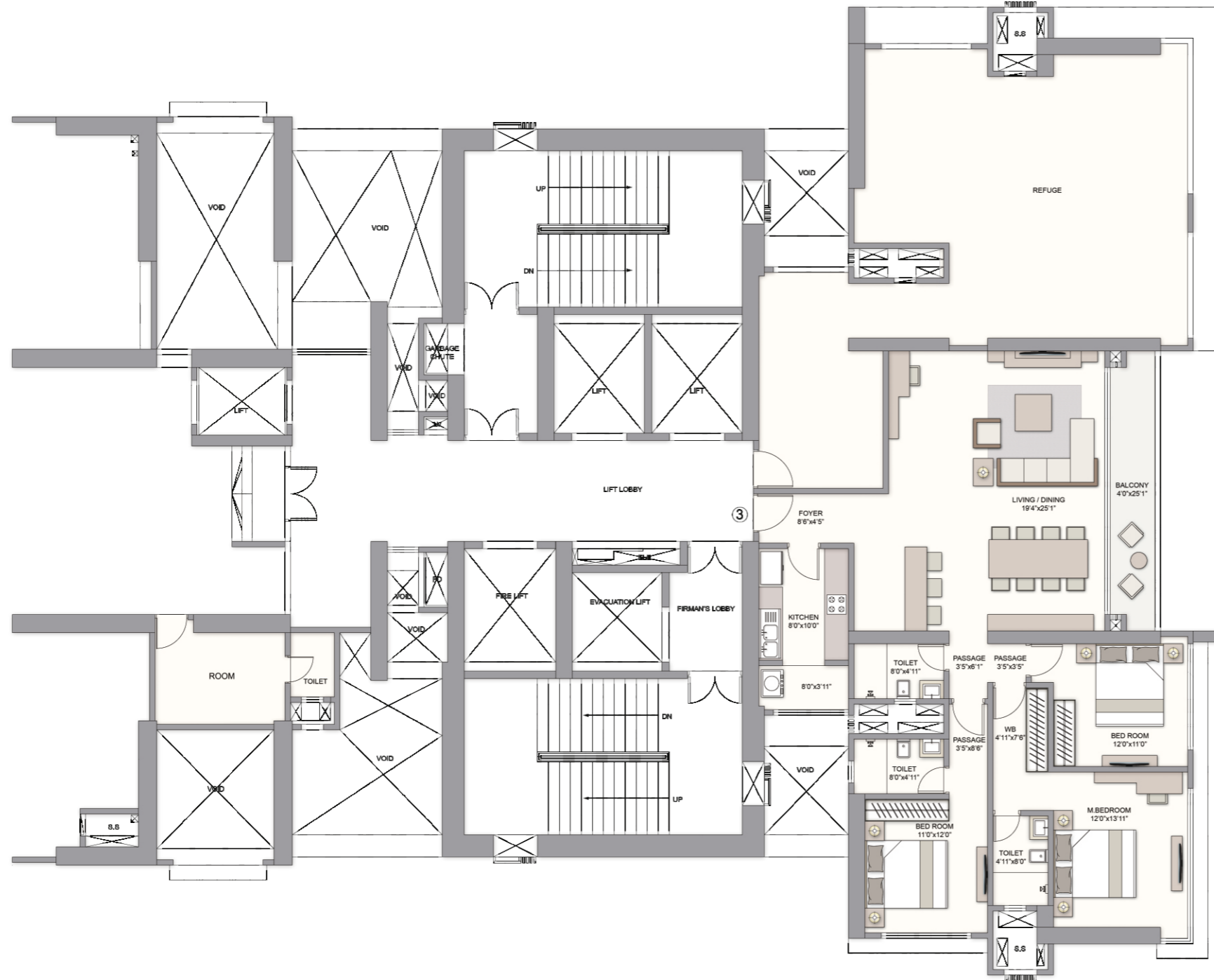
A variance of (+/-) 3% in RERA carpet area may occur on account of planning constraints / site conditions / column / finishing. All these dimensions are unfinished structural dimensions. The furniture / fixtures indicated herein will not be a part of the standard offering. Maharera registration no.: P51900031285 | Available on website <https://maharera.mahaonline.gov.in>

PRESTIGE  
**JASDAN**  
*Classic*

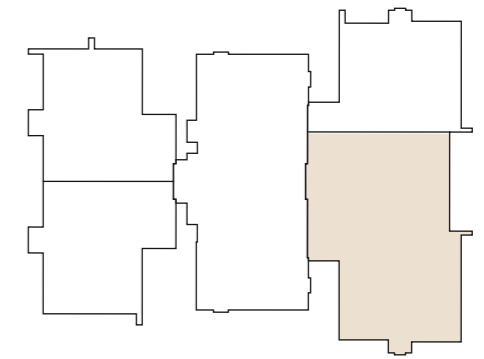


# EAST TOWER

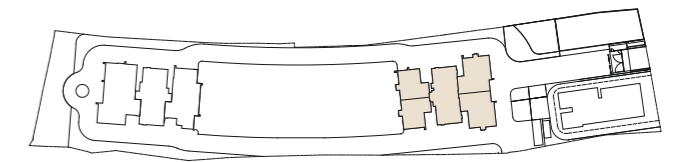
7th Refuge Floor



## UNIT LOCATION



## TOWER LOCATION



A variance of (+/-) 3% in RERA carpet area may occur on account of planning constraints / site conditions / column / finishing. All these dimensions are unfinished structural dimensions. The furniture / fixtures indicated herein will not be a part of the standard offering.  
Maharera registration no.: P51900031285 | Available on website <https://maharera.mahaonline.gov.in>

PRESTIGE  
**JASDAN**  
*Classic*

# EAST TOWER

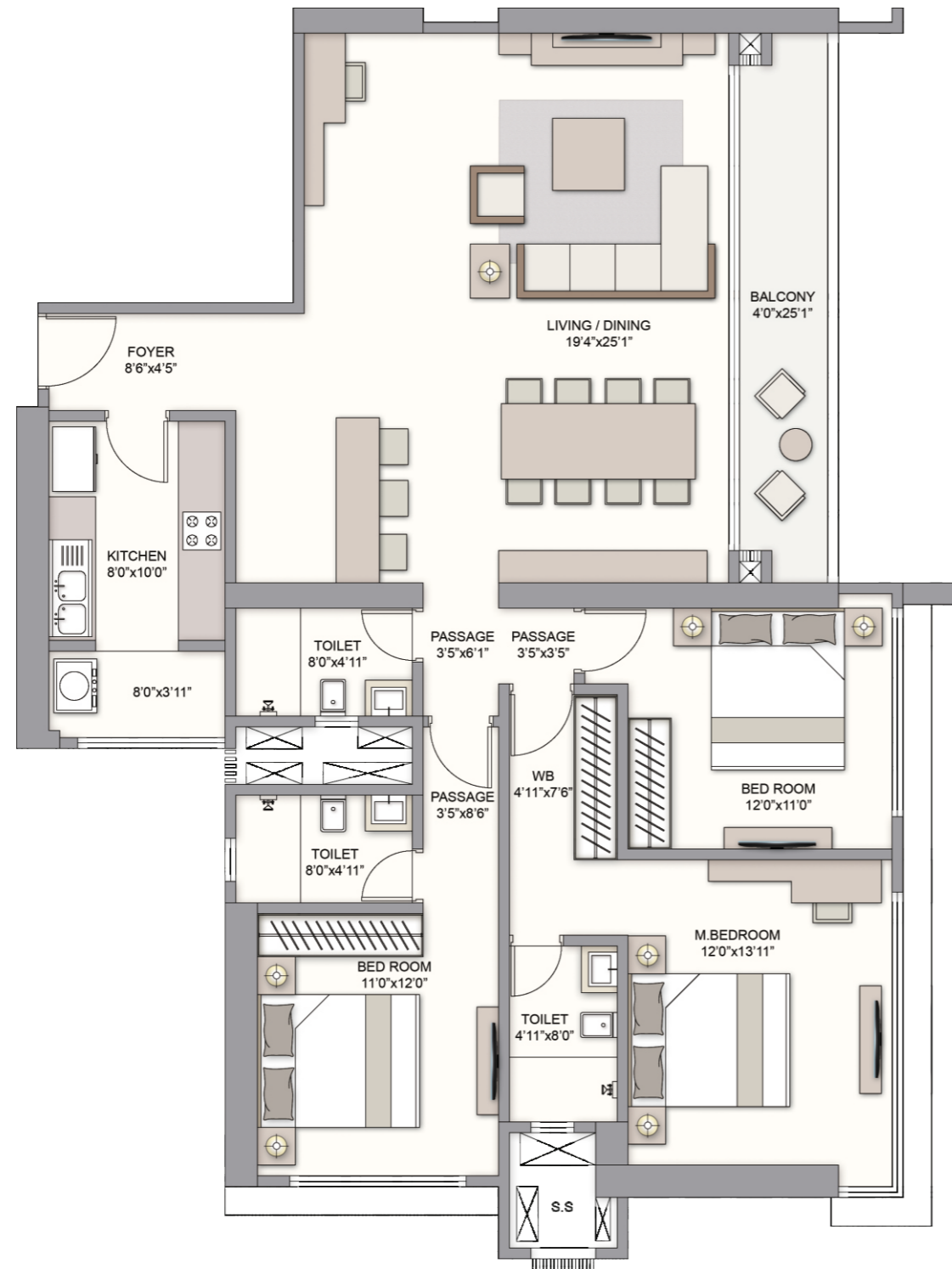
## 3 BED OPULENCE

Unit 3 - 7th Refuge Floor

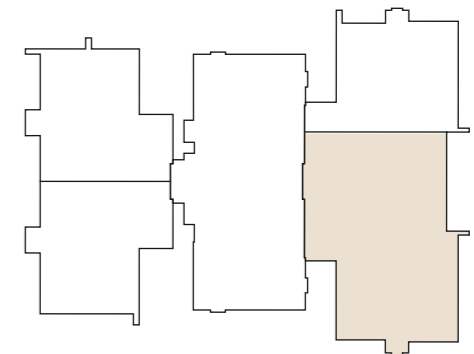
▶ RERA AREA 1450 Sq. Ft.

▶ BALCONY 101 Sq. Ft.

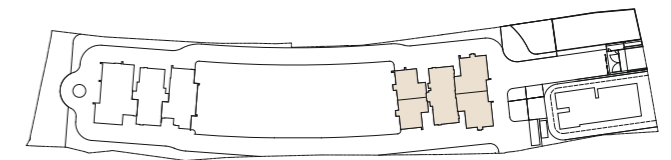
▶ TOTAL AREA 1551 Sq. Ft.



### UNIT LOCATION



### TOWER LOCATION



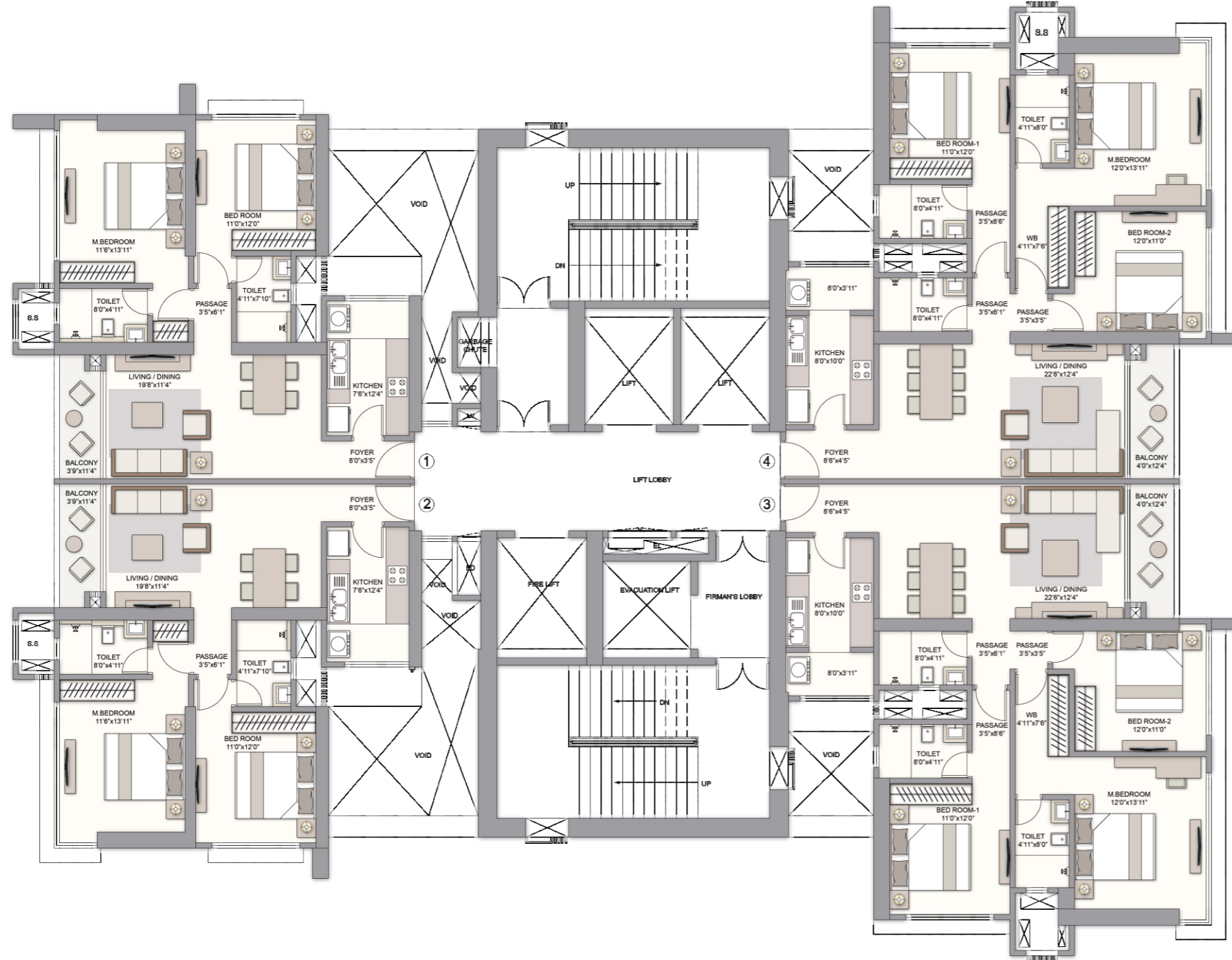
A variance of (+/-) 3% in RERA carpet area may occur on account of planning constraints / site conditions / column / finishing. All these dimensions are unfinished structural dimensions. The furniture / fixtures indicated herein will not be a part of the standard offering. Maharashtra registration no.: P51900031285 | Available on website <https://maharera.mahaonline.gov.in>

PRESTIGE  
**JASDAN**  
*Classic*

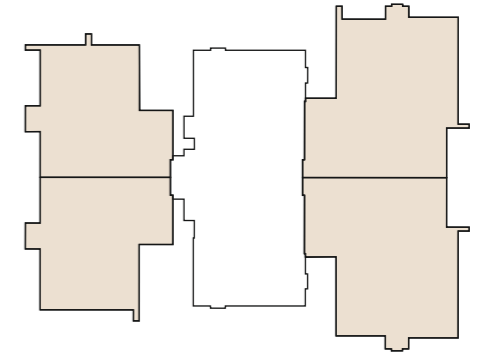
# EAST TOWER

## Typical Floor Plan

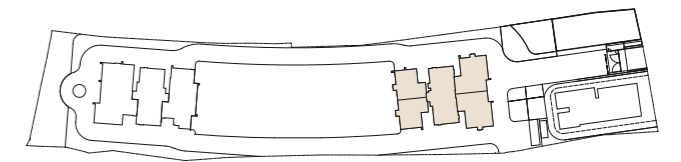
10th to 13th & 15th to 20th Floor



### UNIT LOCATION



### TOWER LOCATION



A variance of (+/-) 3% in RERA carpet area may occur on account of planning constraints / site conditions / column / finishing. All these dimensions are unfinished structural dimensions. The furniture / fixtures indicated herein will not be a part of the standard offering.  
Maharera registration no.: P51900031285 | Available on website <https://maharera.mahaonline.gov.in>

PRESTIGE  
**JASDAN**  
*Classic*

# EAST TOWER

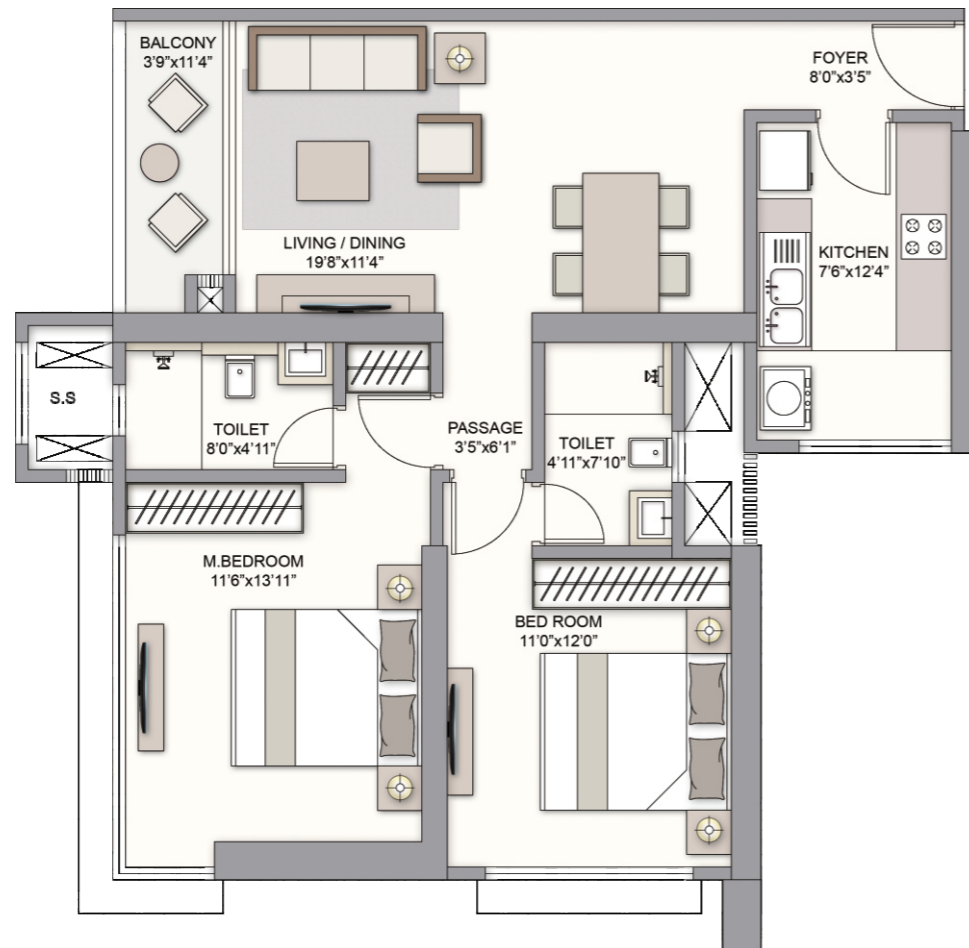
## 2 BED OPULENCE

Unit 2 - 10th to 13th & 15th to 20th Floor

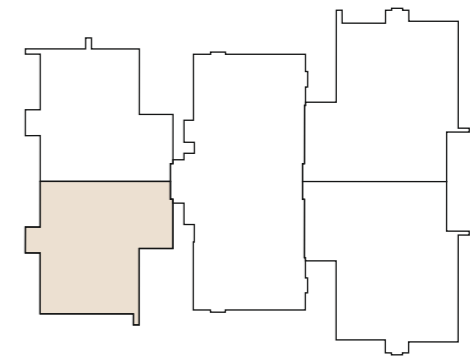
▶ RERA AREA 840 Sq. Ft.

▶ BALCONY 43 Sq. Ft.

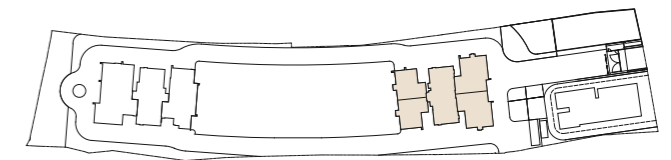
▶ TOTAL AREA 883 Sq. Ft.



### UNIT LOCATION



### TOWER LOCATION



A variance of (+/-) 3% in RERA carpet area may occur on account of planning constraints / site conditions / column / finishing. All these dimensions are unfinished structural dimensions. The furniture / fixtures indicated herein will not be a part of the standard offering. Maharashtra registration no.: P51900031285 | Available on website <https://maharera.mahaonline.gov.in>

PRESTIGE  
**JASDAN**  
*Classic*

# EAST TOWER

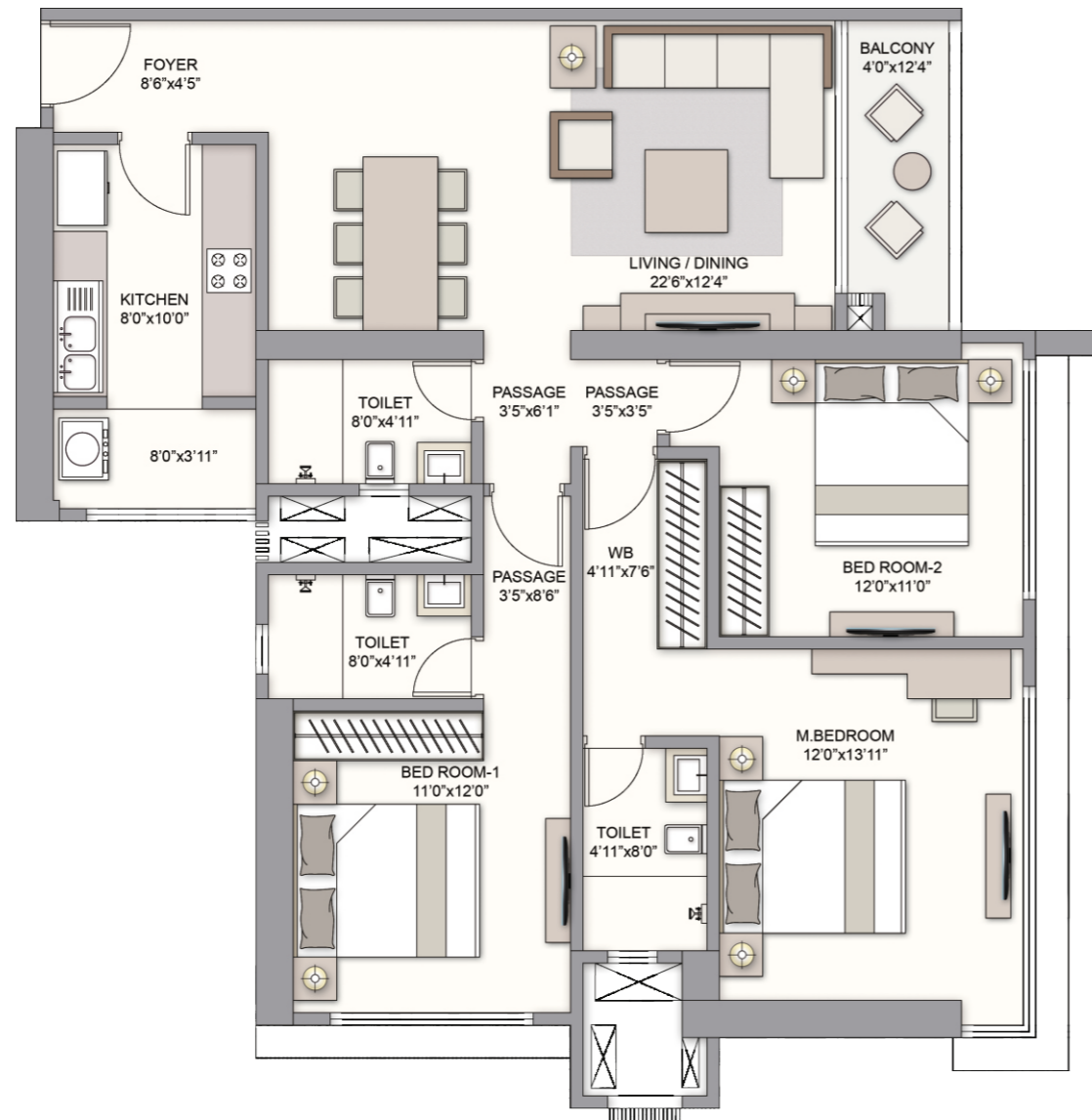
## 3 BED OPULENCE

Unit 3 - 10th to 13th & 15th to 20th Floor

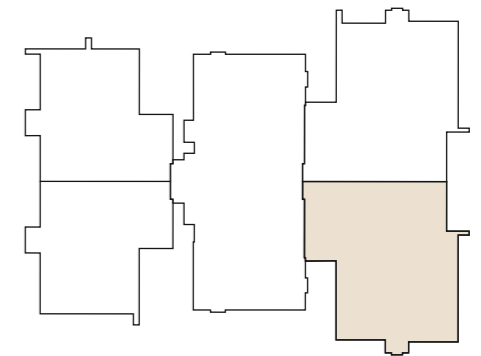
▶ RERA AREA 1196 Sq. Ft.

▶ BALCONY 49 Sq. Ft.

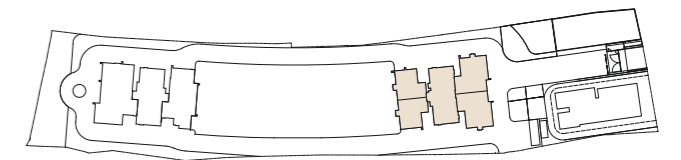
▶ TOTAL AREA 1245 Sq. Ft.



### UNIT LOCATION



### TOWER LOCATION



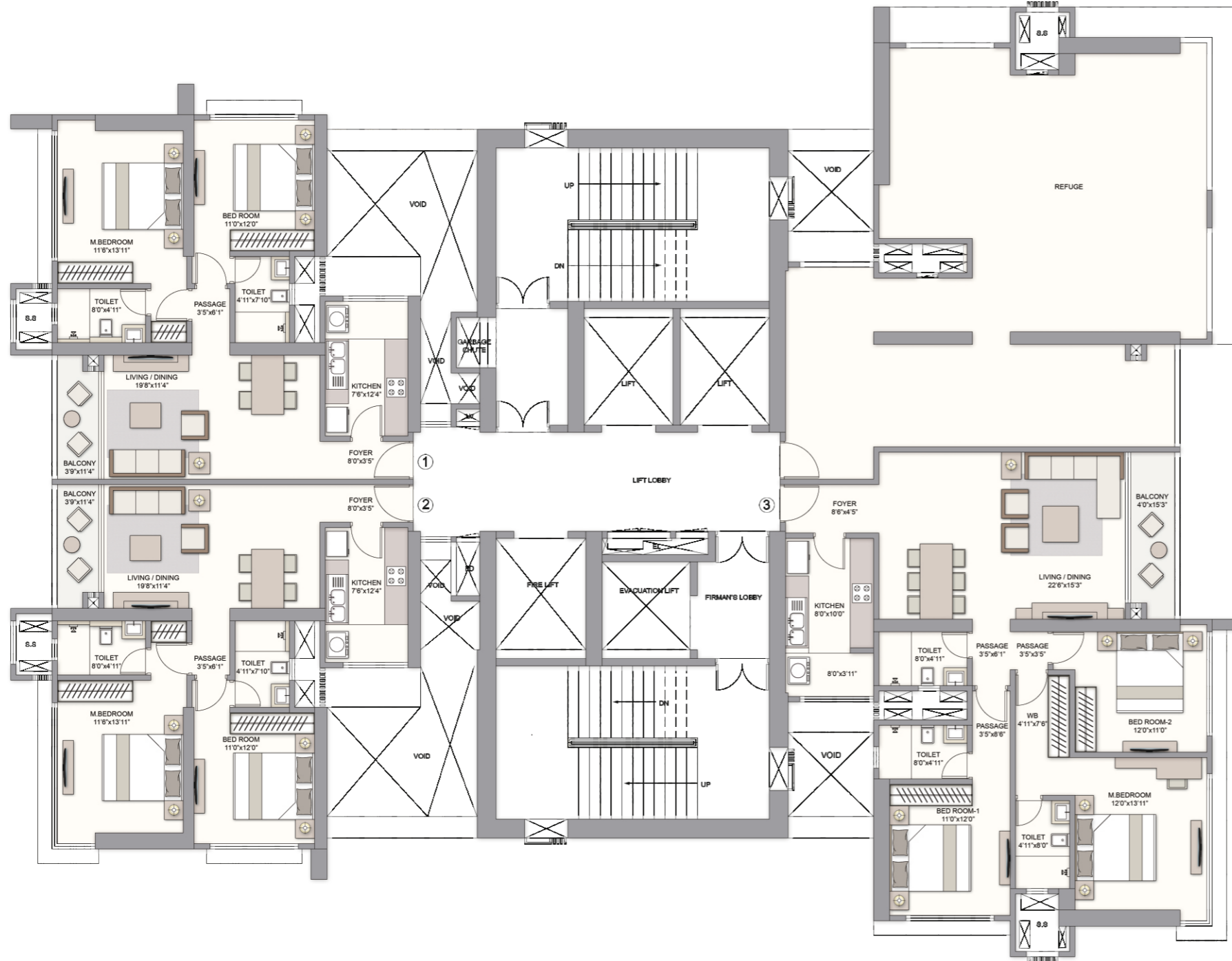
A variance of (+/-) 3% in RERA carpet area may occur on account of planning constraints / site conditions / column / finishing. All these dimensions are unfinished structural dimensions. The furniture / fixtures indicated herein will not be a part of the standard offering. Maharera registration no.: P51900031285 | Available on website <https://maharera.mahaonline.gov.in>

PRESTIGE  
**JASDAN**  
*Classic*

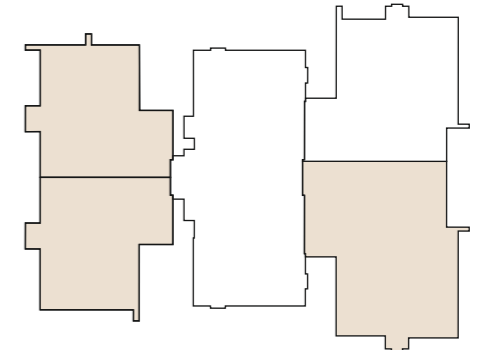


# EAST TOWER

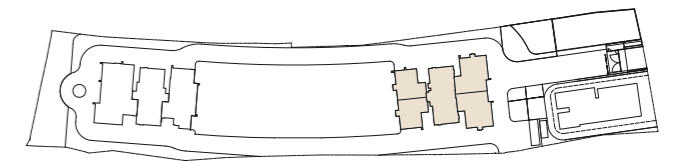
## 14th Refuge Floor



### UNIT LOCATION



### TOWER LOCATION



A variance of (+/-) 3% in RERA carpet area may occur on account of planning constraints / site conditions / column / finishing. All these dimensions are unfinished structural dimensions. The furniture / fixtures indicated herein will not be a part of the standard offering.  
Maharera registration no.: P51900031285 | Available on website <https://maharera.mahaonline.gov.in>

PRESTIGE  
**JASDAN**  
*Classic*

# EAST TOWER

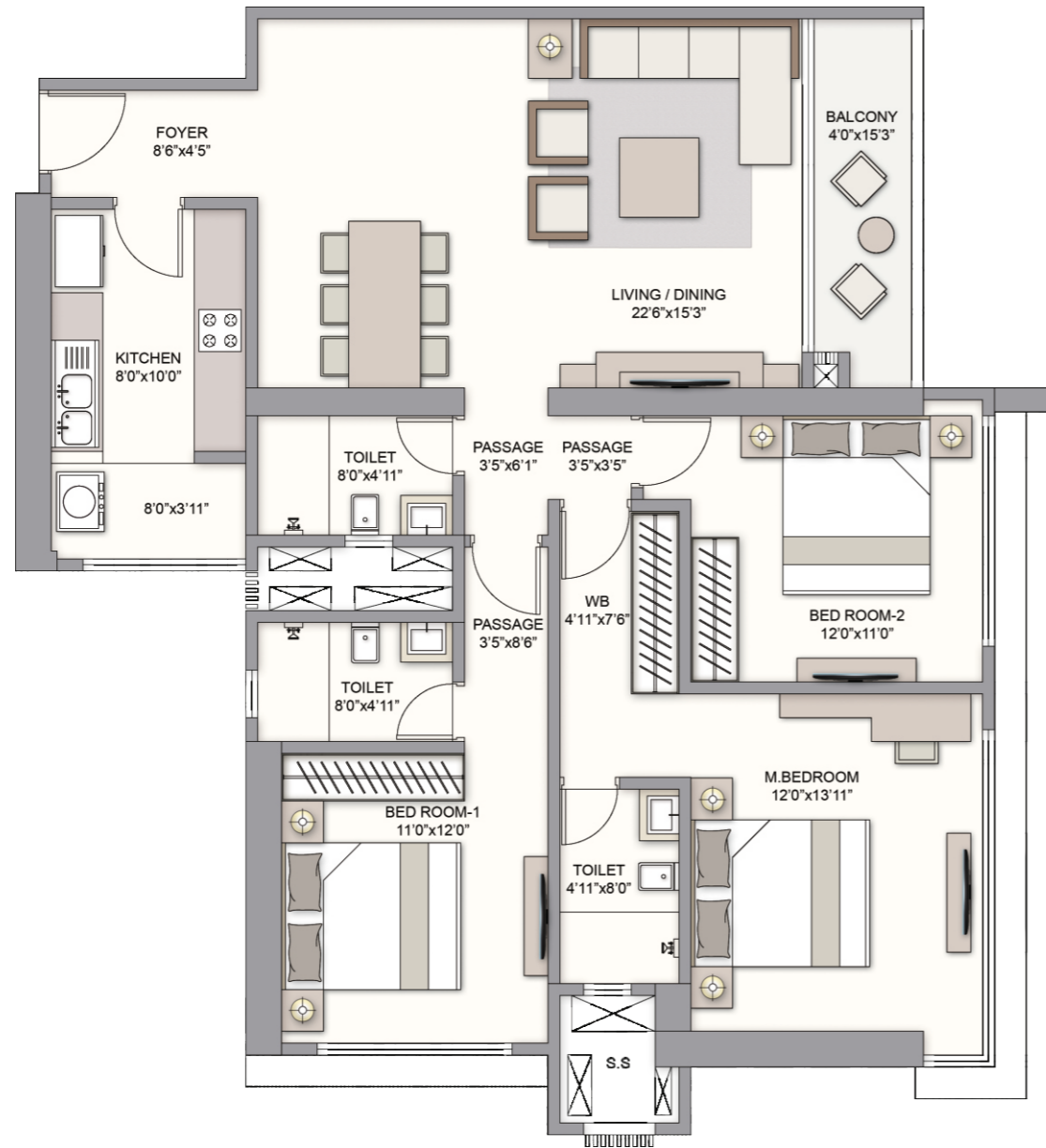
## 3 BED OPULENCE

Unit 3 - 14th Refuge Floor

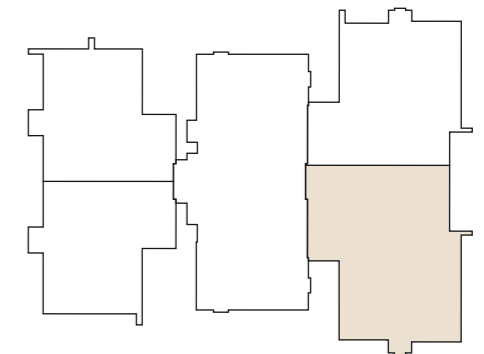
▶ RERA AREA 1264 Sq. Ft.

▶ BALCONY 61 Sq. Ft.

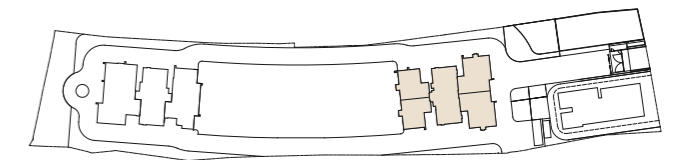
▶ TOTAL AREA 1325 Sq. Ft.



### UNIT LOCATION



### TOWER LOCATION

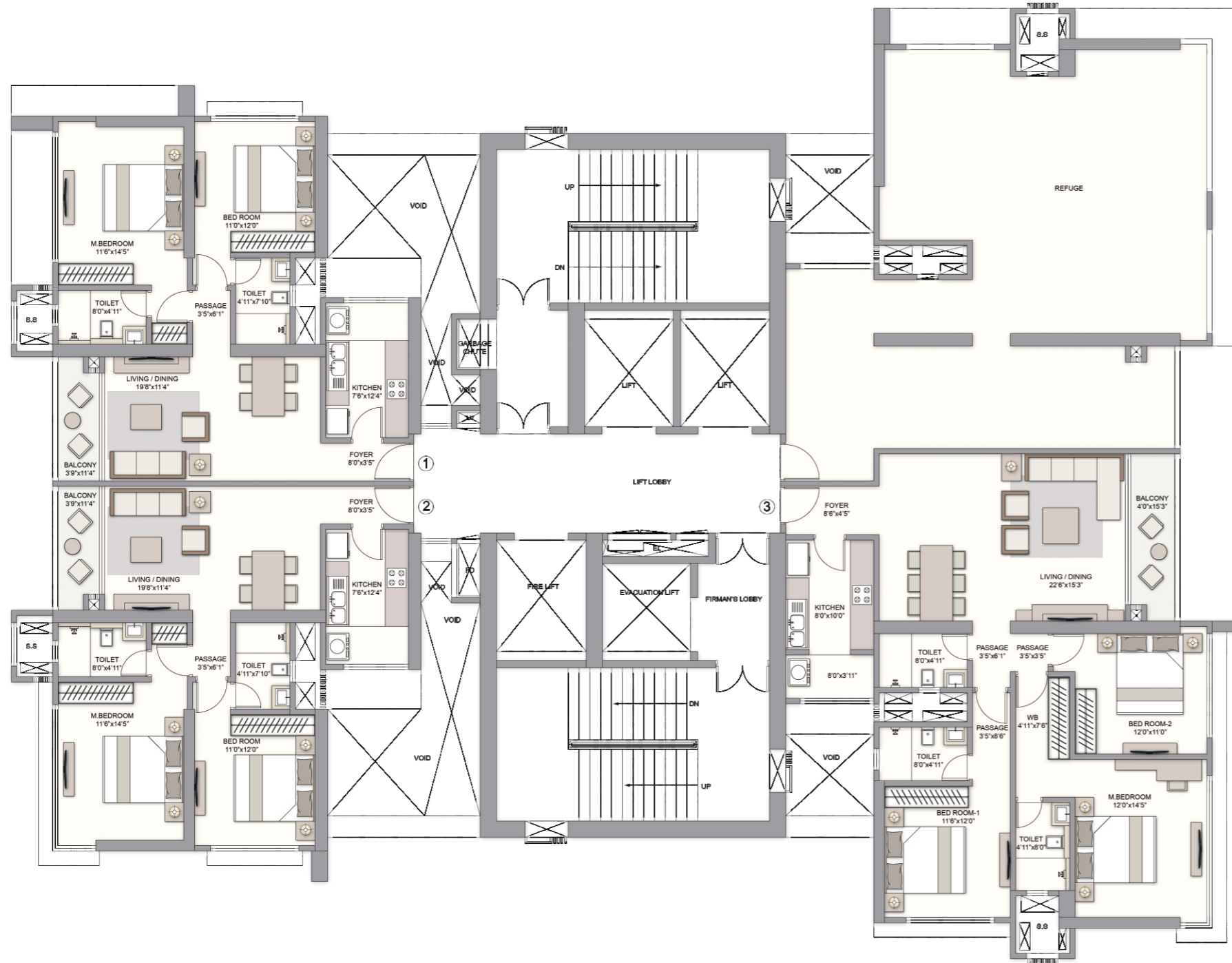


A variance of (+/-) 3% in RERA carpet area may occur on account of planning constraints / site conditions / column / finishing. All these dimensions are unfinished structural dimensions. The furniture / fixtures indicated herein will not be a part of the standard offering. Maharera registration no.: P51900031285 | Available on website <https://maharera.mahaonline.gov.in>

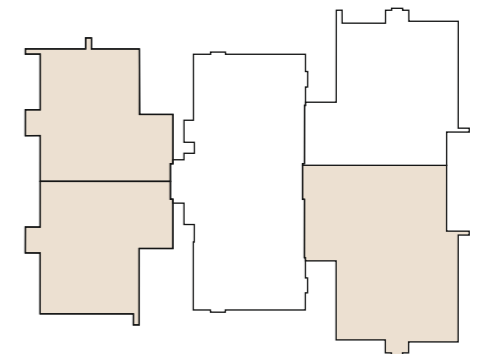
PRESTIGE  
**JASDAN**  
*Classic*

# EAST TOWER

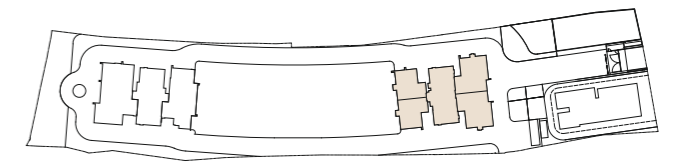
## 21st Refuge Floor



### UNIT LOCATION



### TOWER LOCATION



A variance of (+/-) 3% in RERA carpet area may occur on account of planning constraints / site conditions / column / finishing. All these dimensions are unfinished structural dimensions. The furniture / fixtures indicated herein will not be a part of the standard offering.  
 Maharera registration no.: P51900031285 | Available on website <https://maharera.mahaonline.gov.in>



# EAST TOWER

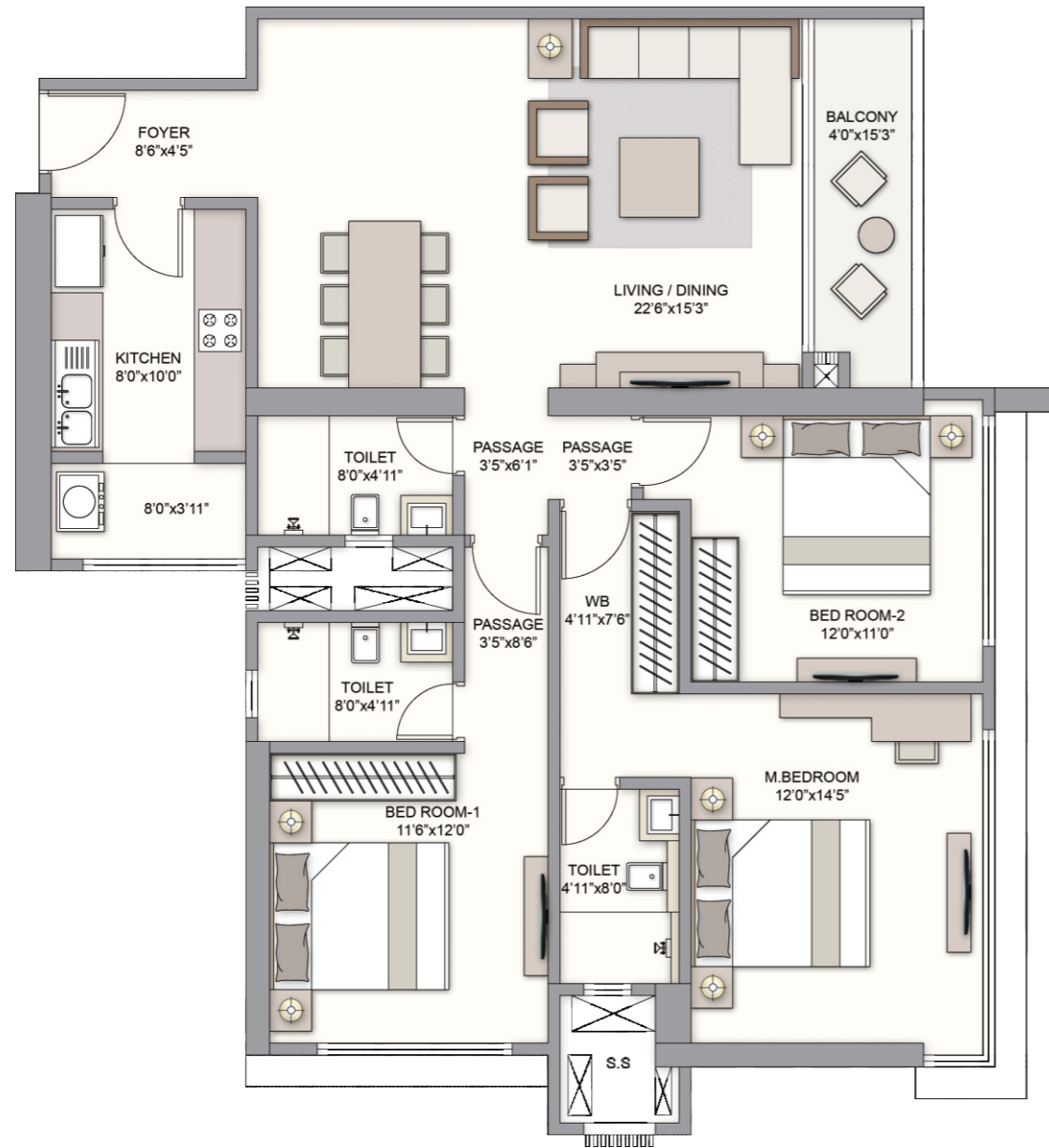
## 3 BED OPULENCE

Unit 3 - 21st Refuge Floor

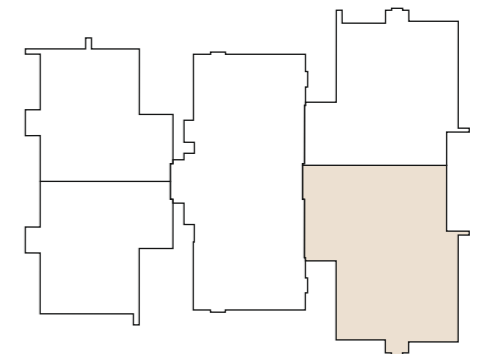
▶ RERA AREA 1275 Sq. Ft.

▶ BALCONY 61 Sq. Ft.

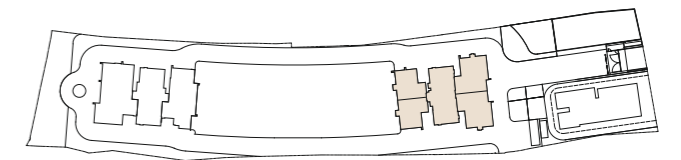
▶ TOTAL AREA 1336 Sq. Ft.



### UNIT LOCATION



### TOWER LOCATION



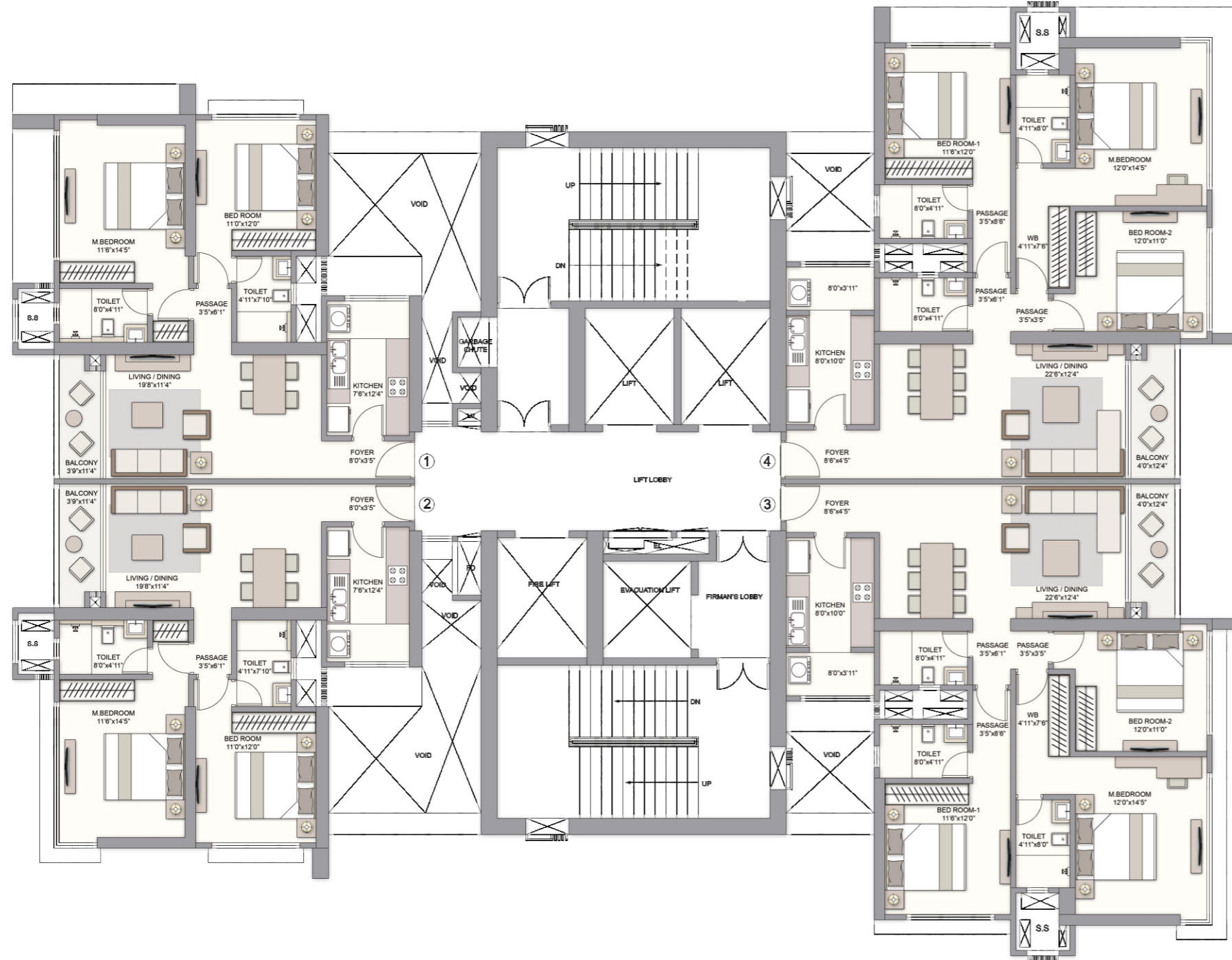
A variance of (+/-) 3% in RERA carpet area may occur on account of planning constraints / site conditions / column / finishing. All these dimensions are unfinished structural dimensions. The furniture / fixtures indicated herein will not be a part of the standard offering. Maharera registration no.: P51900031285 | Available on website <https://maharera.mahaonline.gov.in>

PRESTIGE  
**JASDAN**  
*Classic*

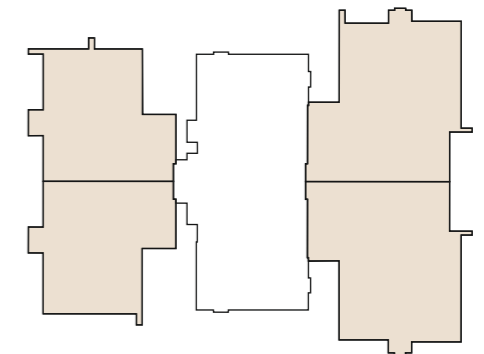


# EAST TOWER

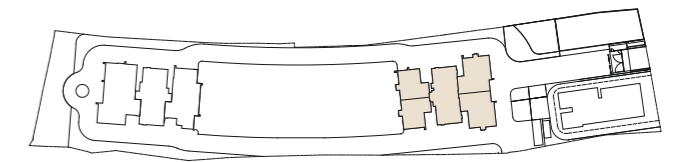
22nd to 27th, 29th to 34th, 36th to 41st, 43rd & 44th Floor



## UNIT LOCATION



## TOWER LOCATION



A variance of (+/-) 3% in RERA carpet area may occur on account of planning constraints / site conditions / column / finishing. All these dimensions are unfinished structural dimensions. The furniture / fixtures indicated herein will not be a part of the standard offering.  
 Maharera registration no.: P51900031285 | Available on website <https://maharera.mahaonline.gov.in>

PRESTIGE  
**JASDAN**  
*Classic*



# EAST TOWER

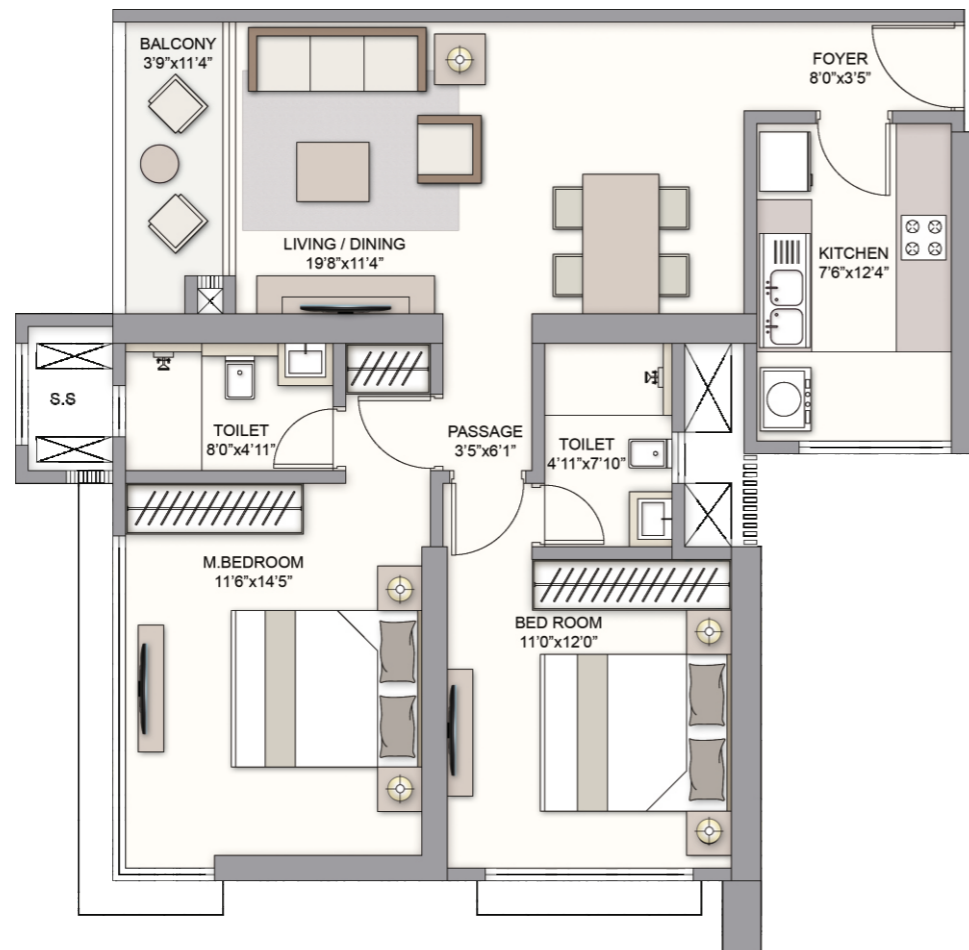
## 2 BED OPULENCE

Unit 2 - 22nd to 27th, 29th to 34th, 36th to 41st, 43rd & 44th Floor

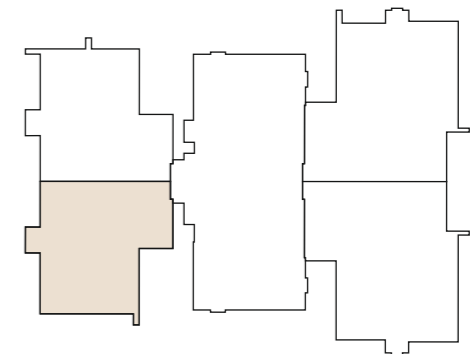
▶ RERA AREA 840 Sq. Ft.

▶ BALCONY 43 Sq. Ft.

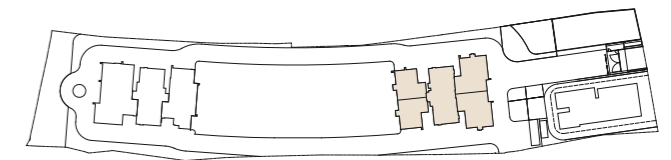
▶ TOTAL AREA 883 Sq. Ft.



### UNIT LOCATION



### TOWER LOCATION



A variance of (+/-) 3% in RERA carpet area may occur on account of planning constraints / site conditions / column / finishing. All these dimensions are unfinished structural dimensions. The furniture / fixtures indicated herein will not be a part of the standard offering. Maharashtra registration no.: P51900031285 | Available on website <https://maharera.mahaonline.gov.in>

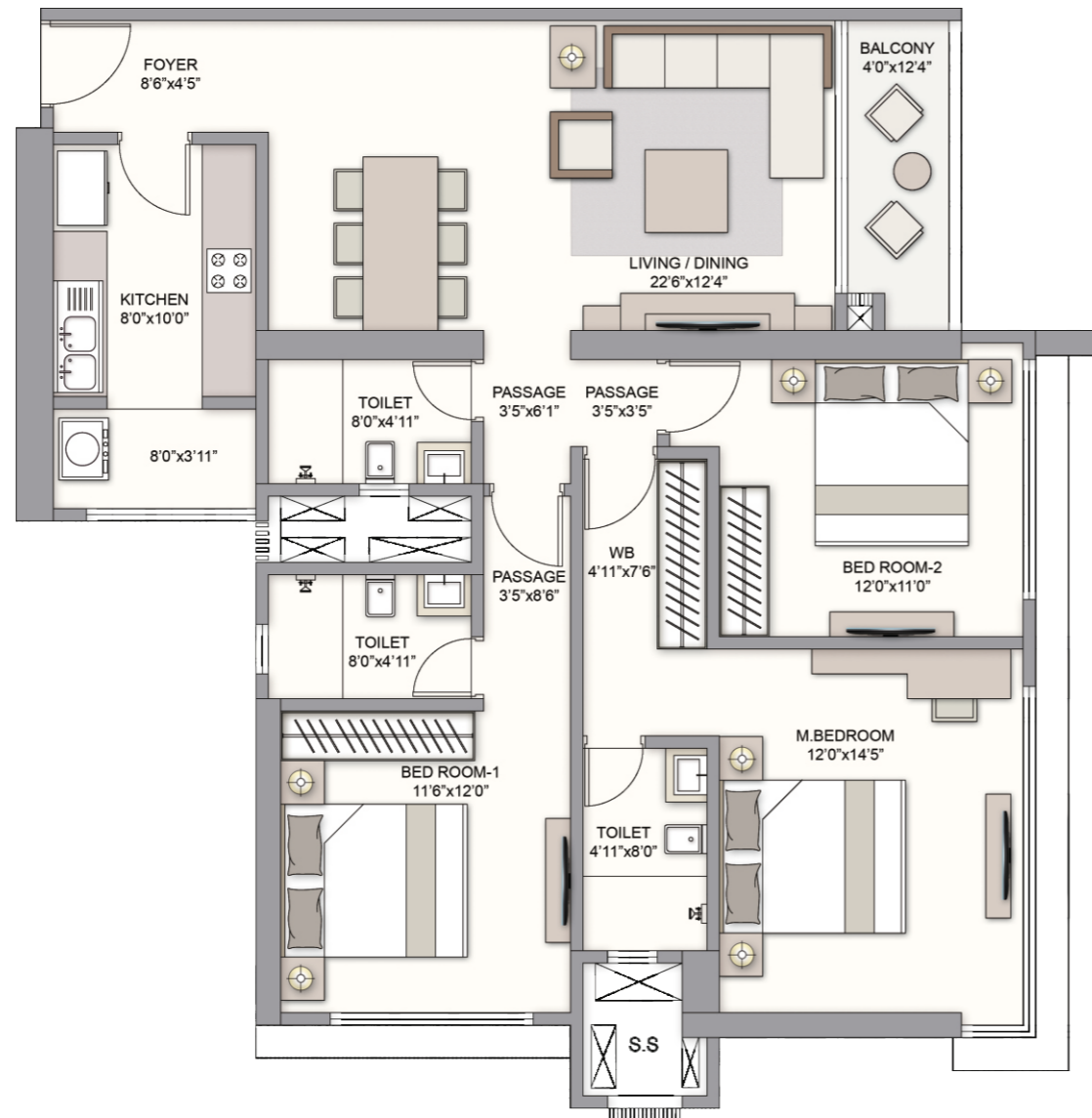
PRESTIGE  
**JASDAN**  
*Classic*

# EAST TOWER

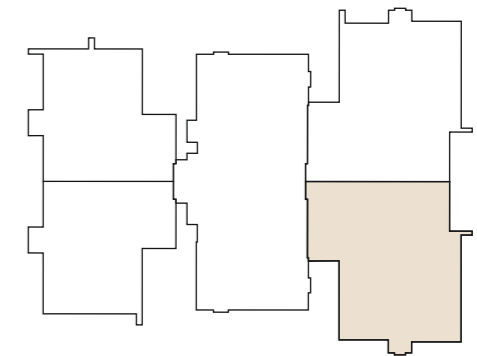
## 3 BED OPULENCE

Unit 3 - 22nd to 27th, 29th to 34th, 36th to 41st, 43rd & 45th Floor

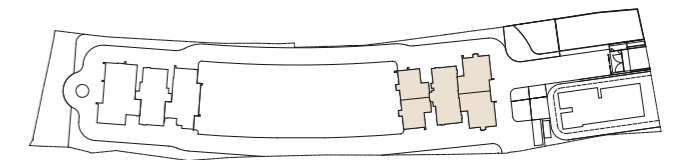
- ▶ RERA AREA 1207 Sq. Ft.
- ▶ BALCONY 49 Sq. Ft.
- ▶ TOTAL AREA 1256 Sq. Ft.



UNIT LOCATION



TOWER LOCATION

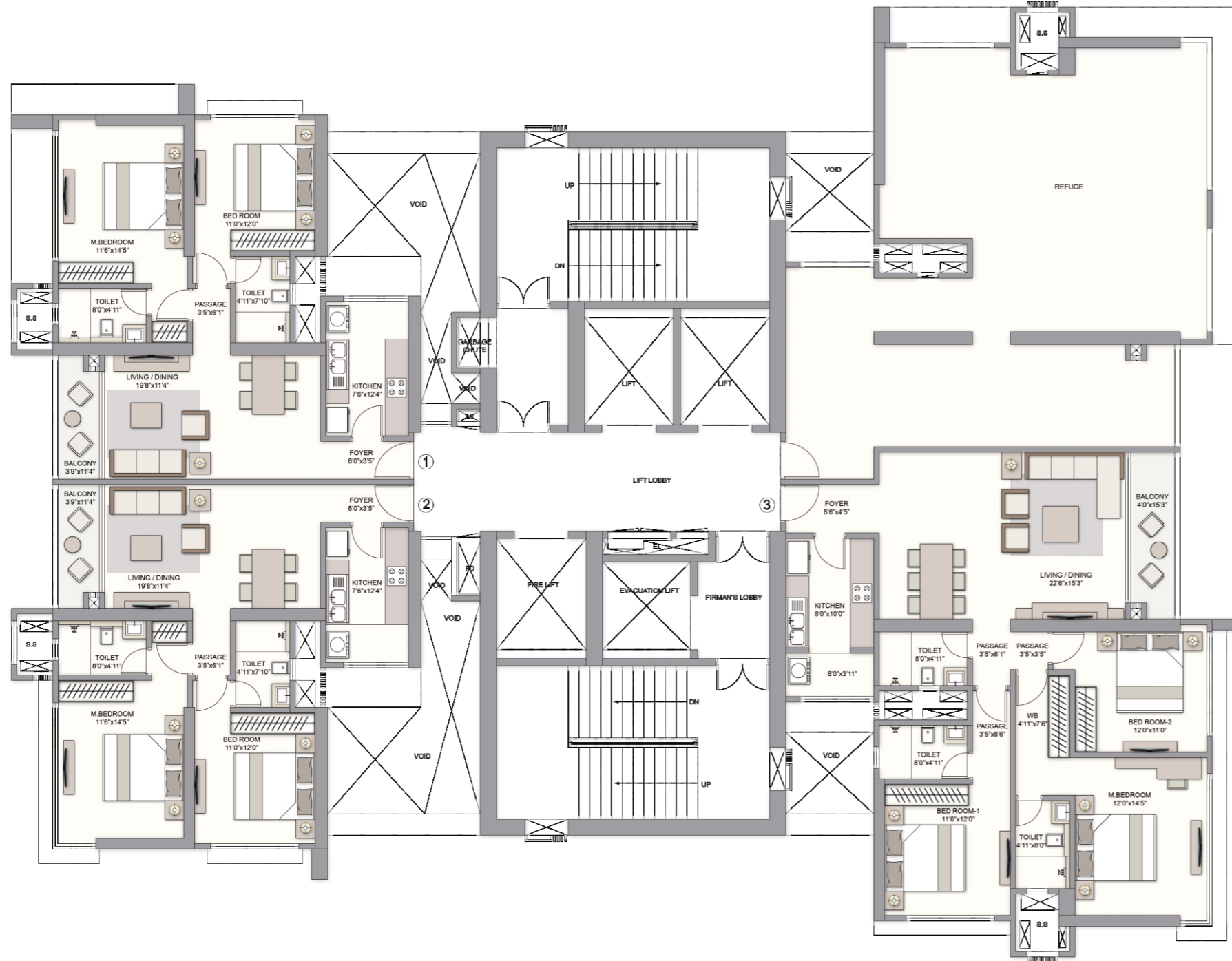


A variance of (+/-) 3% in RERA carpet area may occur on account of planning constraints / site conditions / column / finishing. All these dimensions are unfinished structural dimensions. The furniture / fixtures indicated herein will not be a part of the standard offering. Maharera registration no.: P51900031285 | Available on website <https://maharera.mahaonline.gov.in>

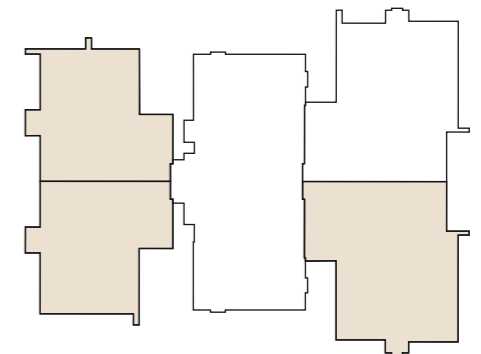
PRESTIGE  
**JASDAN**  
*Classic*

# EAST TOWER

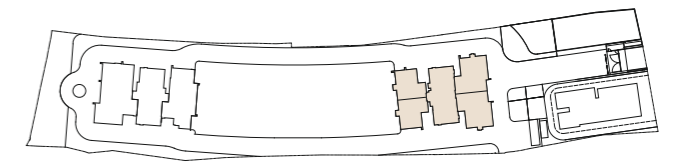
28th & 35th Refuge Floor



UNIT LOCATION



TOWER LOCATION



A variance of (+/-) 3% in RERA carpet area may occur on account of planning constraints / site conditions / column / finishing. All these dimensions are unfinished structural dimensions. The furniture / fixtures indicated herein will not be a part of the standard offering.  
 Maharera registration no.: P51900031285 | Available on website <https://maharera.mahaonline.gov.in>



# EAST TOWER

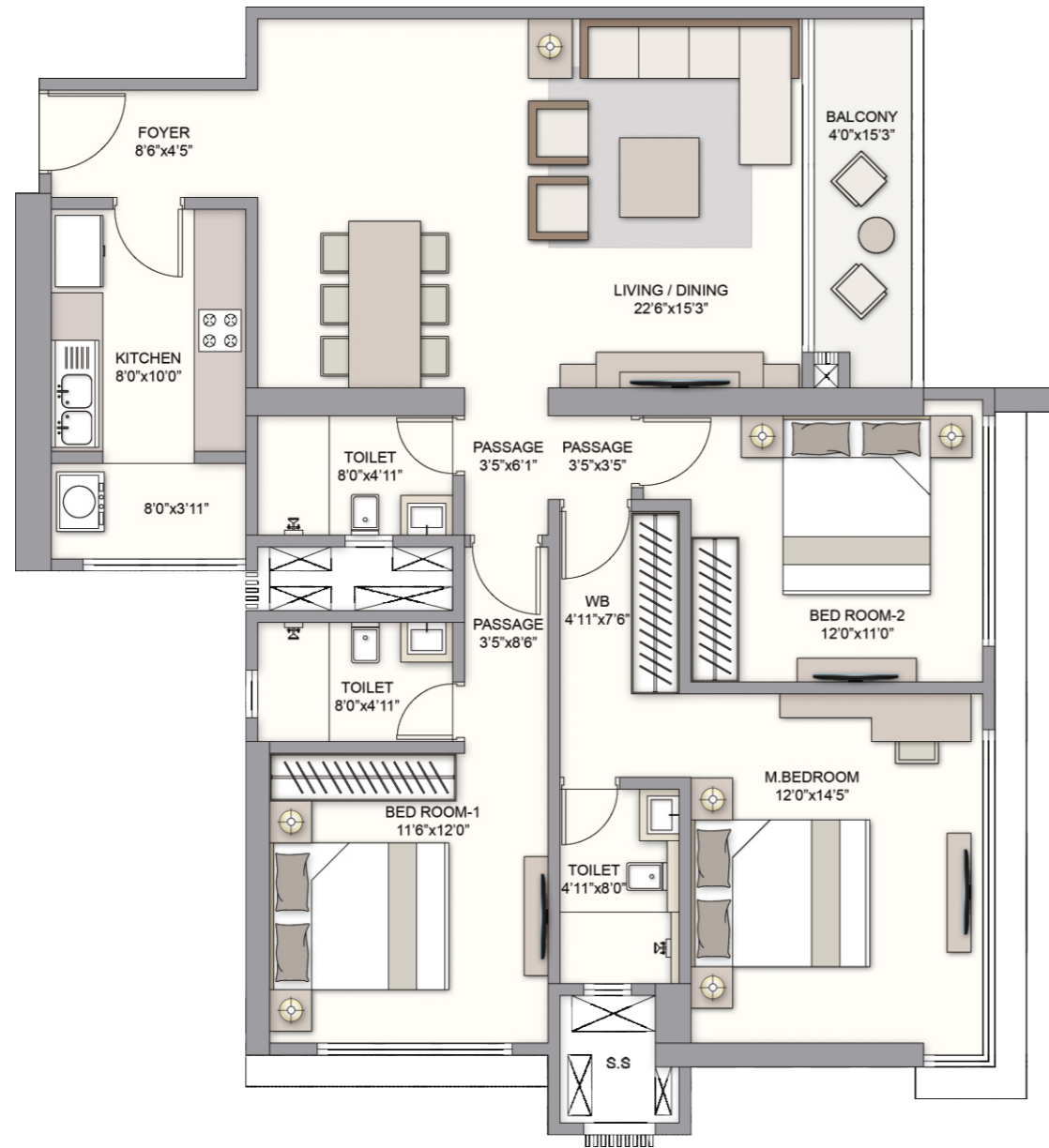
## 3 BED OPULENCE

Unit 3 - 28th & 35th Refuge Floor

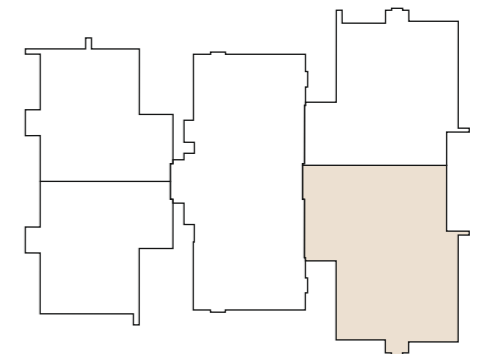
▶ RERA AREA 1275 Sq. Ft.

▶ BALCONY 61 Sq. Ft.

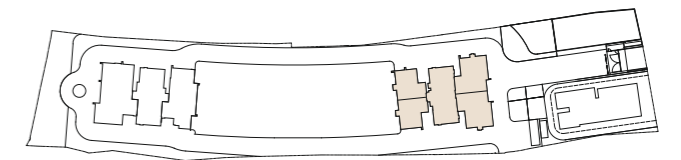
▶ TOTAL AREA 1336 Sq. Ft.



### UNIT LOCATION



### TOWER LOCATION

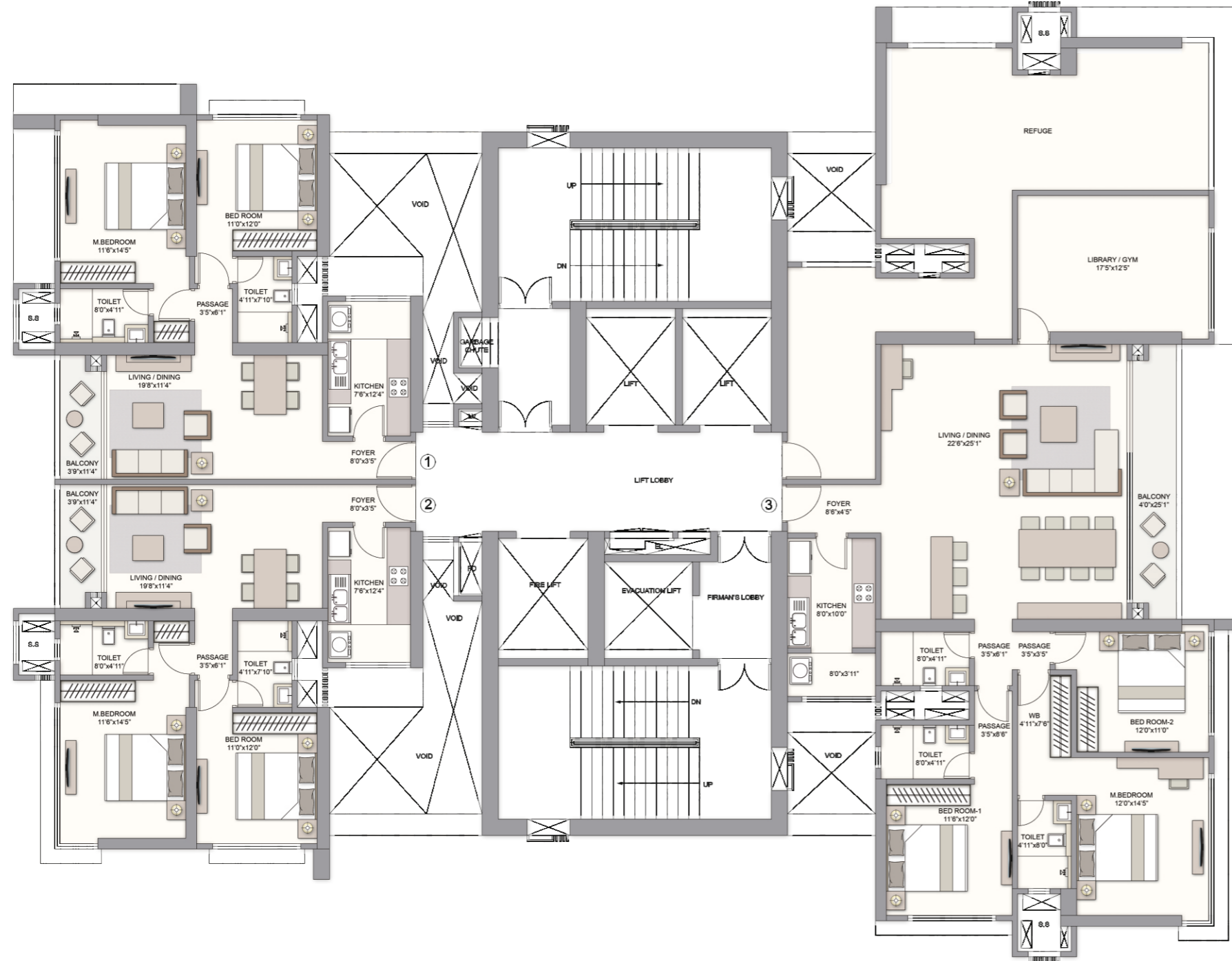


A variance of (+/-) 3% in RERA carpet area may occur on account of planning constraints / site conditions / column / finishing. All these dimensions are unfinished structural dimensions. The furniture / fixtures indicated herein will not be a part of the standard offering. Maharera registration no.: P51900031285 | Available on website <https://maharera.mahaonline.gov.in>

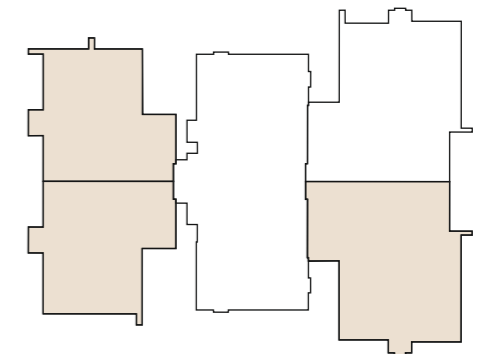
PRESTIGE  
**JASDAN**  
*Classic*

# EAST TOWER

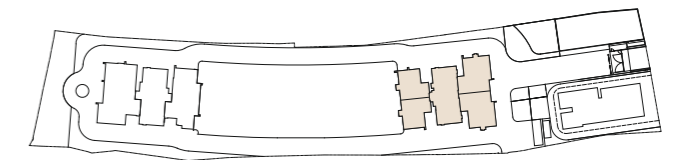
## 42nd Refuge Floor



### UNIT LOCATION



### TOWER LOCATION



A variance of (+/-) 3% in RERA carpet area may occur on account of planning constraints / site conditions / column / finishing. All these dimensions are unfinished structural dimensions. The furniture / fixtures indicated herein will not be a part of the standard offering.  
Maharera registration no.: P51900031285 | Available on website <https://maharera.mahaonline.gov.in>

PRESTIGE  
**JASDAN**  
*Classic*



# EAST TOWER

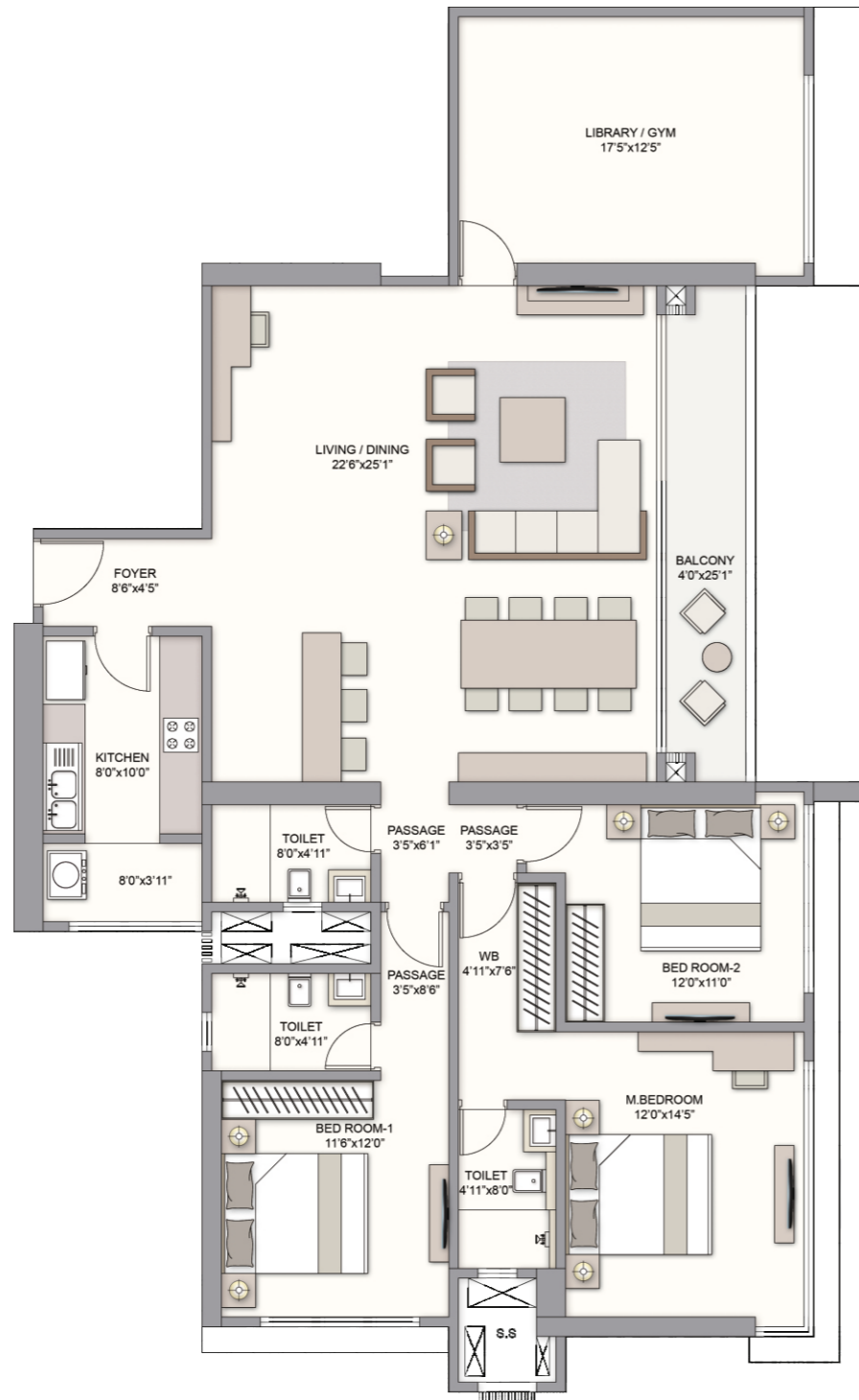
## 3 BED OPULENCE

Unit 3 - 42nd Refuge Floor

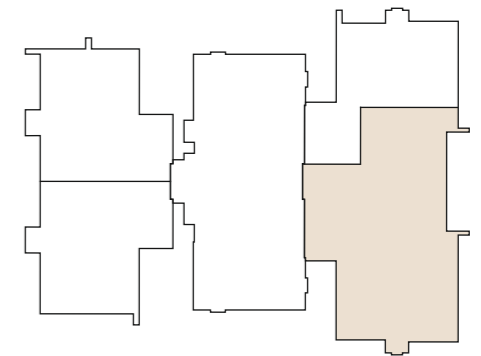
▶ RERA AREA 1737 Sq. Ft.

▶ BALCONY 101 Sq. Ft.

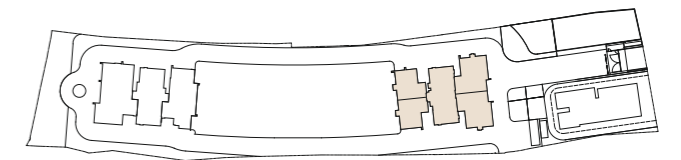
▶ TOTAL AREA 1838 Sq. Ft.



### UNIT LOCATION



### TOWER LOCATION

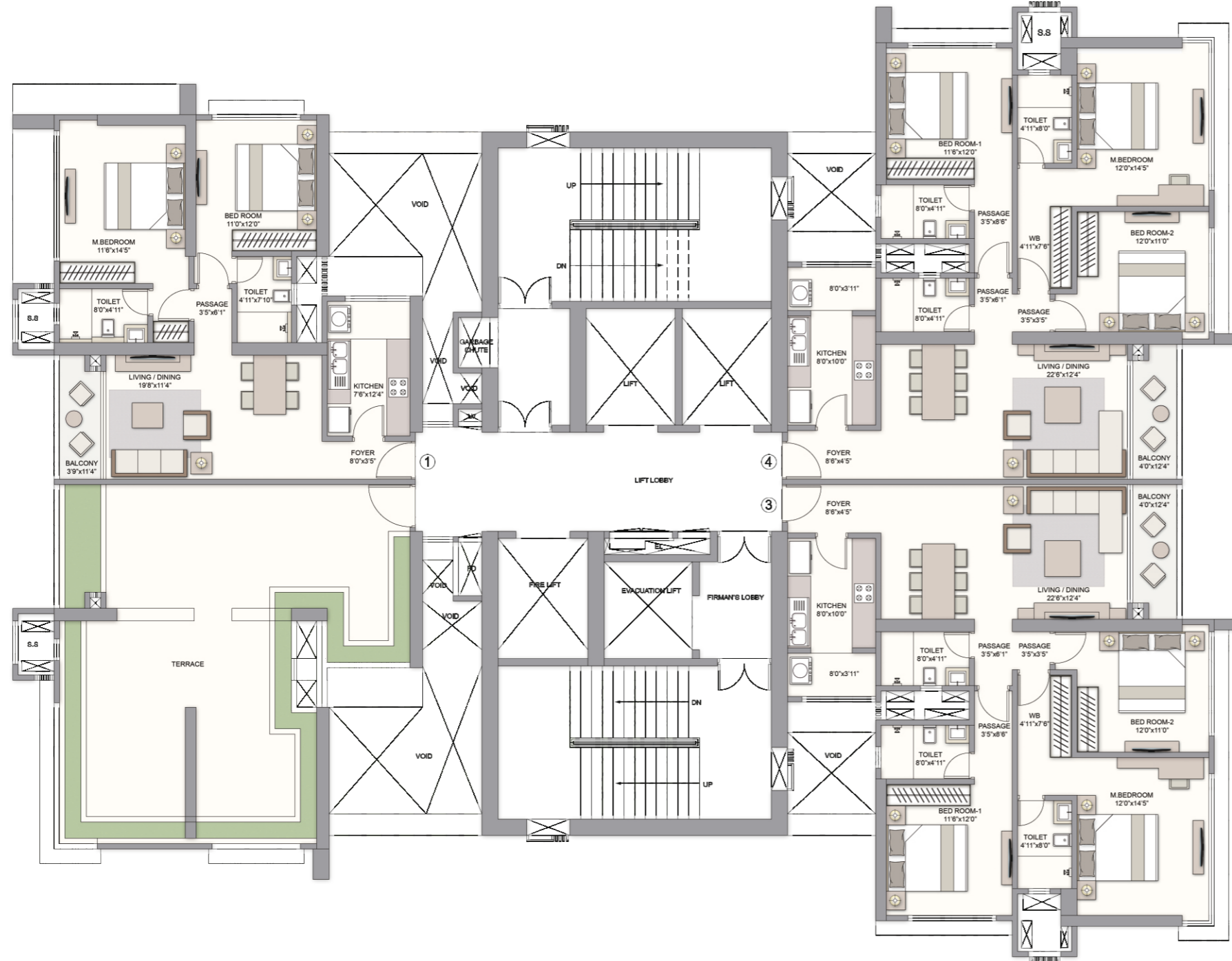


A variance of (+/-) 3% in RERA carpet area may occur on account of planning constraints / site conditions / column / finishing. All these dimensions are unfinished structural dimensions. The furniture / fixtures indicated herein will not be a part of the standard offering. Maharashtra registration no.: P51900031285 | Available on website <https://maharera.mahaonline.gov.in>

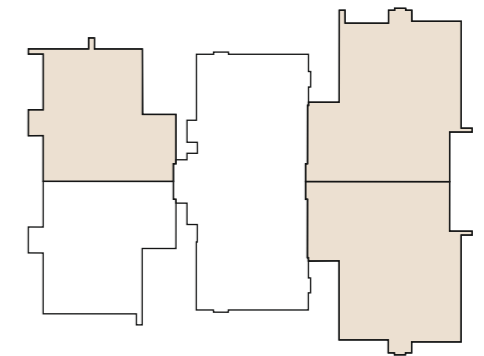
PRESTIGE  
**JASDAN**  
*Classic*

# EAST TOWER

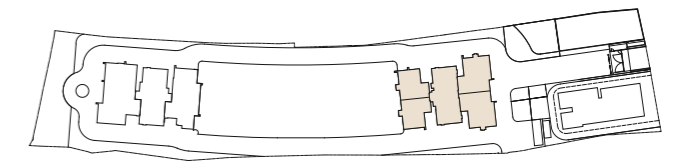
45th Floor



## UNIT LOCATION



## TOWER LOCATION



A variance of (+/-) 3% in RERA carpet area may occur on account of planning constraints / site conditions / column / finishing. All these dimensions are unfinished structural dimensions. The furniture / fixtures indicated herein will not be a part of the standard offering.  
 Maharera registration no.: P51900031285 | Available on website <https://maharera.mahaonline.gov.in>

PRESTIGE  
**JASDAN**  
*Classic*